

Model: VERBIER DARK L 59,6X59,6(A)

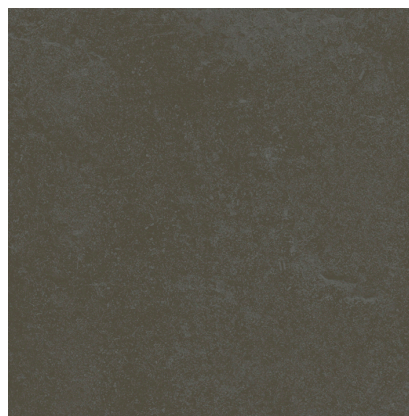
Codes: 100325467

Water absorption: Bla - Porcelain tile (wa <= 0.1%)

Finish: Glazed / Standard

Tone variations: V3

Rectified: Yes



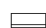
DIMENSIONAL FEATURES

 UNE-EN ISO 10545-2

Thickness	8.5 mm	+/-5%*
Width	596 mm	
Length	596 mm	
Length and width deviation	Below 0.15%	+/-0.3%*
Side straightness deviation	Below 0.15%	+/-0.3%*
Squareness deviation	Below 0.15%	+/-0.3%*
Surface flatness deviation	Below 0.15%	+/-0.4%*

*ISO-13006:2018 UNE-EN 14411:2016

FEATURES

 Natural-looking, non-glossy surface finish.

 Name given to the finish of those tiles dimensionally improved after the firing process.

 Installation on floor

MECHANICAL FEATURES

 UNE-EN ISO 10545-4-6-7-9-11

Breaking strength	2338.2 N	>1300 N*
Modulus of rupture	54.8 N/mm ²	>=35 N/mm ² *
Abrasion resistance	2	
Crazing resistance	PASS	
Resistance to thermal shock	RESISTE	

*ISO-13006:2018 UNE-EN 14411:2016

HYGIENIC FEATURES

 UNE-EN ISO 10545-13-14

Chemical resistance	Class "A" for swimming pools and cleaning products (resists attack). Minimum Class "B" for acids and bases	B Min.*
Stain resistance	Class 5. Easy cleaning with water	3 Min.*

*ISO-13006:2018 UNE-EN 14411:2016

System Certification



Do not use cleaning agents containing hydrofluoric acid.

It is recommended to fix tiles with a minimum joint of 1,5 mm. Do not fix without joint.

For big sizes, it is recommended to fix with mortars containing polymeric additives and to use the double gluing technique.

Mosaic tiles must be grouted.

This document is only commercial and cannot be used as expert opinion, documentary evidence or in any legal or administrative procedure unless authorized by PORCELANOSA S.A.

ANTI-SLIP VALUE

Reference standards: EN 16165 (Annex A, B, C) - ANSI A326.3 - AS 4586

Dynamic coefficient of friction (dcof)	0.69 (T7C2)	
Slip resistance (wet pendulum) irhd 55	CL1	UNE EN 16165 Anexo C*
Slip resistance (shod feet)	R-9	C231158 (1C2)*
Slip resistance (barefoot)	B	PN 18 / TONO 3 - 19102*
Pendulum test value (ptv) irhd 96	WET 34 / DRY 61 (T7C2)	
Slip resistance (wet pendulum) (aus) irhd 55	P2	AS 4586*
Slip resistance (wet pendulum) (aus) irhd 96	P2	AS 4586*

*ISO-13006:2018 UNE 14411:2016 ANSI 137.1 AS 4662

DETERMINATION OF LIGHT REFLECTANCE VALUE (LRV)

UNE-EN ISO 10545-18

Determination of light reflectance value (lrv)	5.30	
--	------	--

*ISO-13006:2018 UNE-EN 14411:2016

PACKING

Sales units per box	1.776073 M2/BOX	
Sales units per pallet	56.834328 M2/PAL	
Sales units per unit	0.355215 M2/PIECE	

SCOPE OF USE

Technical code-1	6 - Use on heavy traffic floors	
------------------	---------------------------------	--

System Certification



RECOMMENDED USE LOCATIONS

Single-family dwelling

Outdoor Premises: Porches, verandah, terrace, outdoor access or circulation area

Indoor Premises - Dry: Entrance and other enclosures with direct opening to the outside (garden, terrace, storage room).

Indoor Premises - Dry: Room, room, bedroom or other enclosure without direct access to the outdoors.

Indoor Premises - Dry: Individual staircase

Indoor Premises - Wet: Kitchen, mini kitchen in living area, laundry room

Indoor Premises - Humid: Bathroom or Toilet

Collective housing

Outdoor premises: Balconies, terraces, galleries (not accessible from the outside)

Indoor Premises - Common Elements: Entrance Hall (less than 15 dwellings)

Interior Premises - Common Elements: Entrance Hall (more than 15 dwellings)

Indoor Premises - Common Elements: Stairs and corridors with or without lifts

Indoor Premises - Common Elements: Meter centralisation room

Indoor Premises - Common Elements: Storage rooms for children's cars, bicycles, etc.

Indoor Premises - Residential - Dry: Entrance, living room, dining room, professional office with reception of customers

Indoor Premises - Housing - Dry: Bedrooms, personal office, storage room, changing room

Indoor Premises - Dwelling - Damp: Kitchen, mini kitchen and living area, laundry room

Indoor Premises - Dwelling - Damp: Bathrooms or shower rooms

Public Residential

Single or double rooms

Group rooms

Intensive use dormitories in residences, schools, etc.

Administrative

Office with workstation

Collective office, open plan office

Meeting/conference room, shops and retail (sales area)

Shops, warehouses with average public attendance (sales area)

Department stores, hypermarkets, shopping centres (sales area)

Commercial

Shops and retail trade (Sales area)

Shops, warehouses with average public attendance (sales area)

Department stores, shopping centres (sales area)

Teacher

Pre-school and Primary: Classroom without direct opening to the exterior

Infant and Primary: Playroom, exercise, multi-purpose room without direct opening to the outside.

Secondary, Baccaalaureate and University: Classroom without direct opening to the outside.

Secondary, Baccaalaureate and University: Multi-purpose classroom, meetings

Secondary, Baccaalaureate and University: Other laboratories (physics, electricity, radiation, mechanics).

Sanitary

Single-user room, isolation room

Collective room

Waiting rooms, consultation rooms, distribution corridors

Major and minor operating theatres. Operating theatres

Radiological premises

Rehabilitation, massage, therapy and rehabilitation centres

Laboratories (no public access)

Public attendance

Catering: Main dining room, banqueting hall (intensive use)

Catering: Dining room restaurant, bar, cafeteria (medium use)

Catering: Dining room, company cafeteria

Entertainment and recreation: Large hall for receptions, dances, discotheques. Intensive use

Entertainment and recreation: Showroom, cinema, theatre, sports activities, amphitheatres, games (Closed)

System Certification



Entertainment and recreation: lounges, waiting room, TV lounge, games room

Libraries and reading rooms: Libraries, reading rooms, temples of worship, museums (With public access)

Libraries and reading rooms: Libraries, reading rooms, houses of worship, museums (Internal use)

Common transit areas

Indoor premises: corridors and common areas with heavy traffic

Indoor premises: Corridors and common areas with average traffic

Service, facilities

Toilets in office areas, restricted use

Sanitary premises special hygiene (hospitals, food)

Premises for telephone, computer and other dry installations

Re-printing service, copies of plans, photography

Archive and storage premises

Various

Cladding of bonded or mixed facades

Facade cladding with mechanical anchors

Kitchen worktops, bars, restaurants

Public bathroom countertops

System Certification

