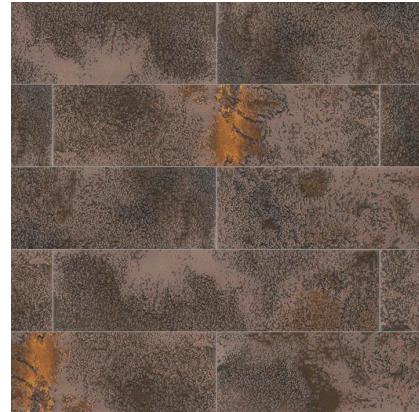


Model: NEBULA BROWN

Codes: 100341500

Group: G-228

Format: 8X30X0,85CM



RECOMMENDATIONS

Recommended adhesive	100043280 TIXOCEM PLUS 25KG
Recommended joint	100236481 COLORSTUK RAPID ANTRACITA N 5KG
Recommended joint (wet area)	100236481 COLORSTUK RAPID ANTRACITA N 5KG
Recommended adhesive (wet area)	100043280 TIXOCEM PLUS 25KG

DIMENSIONAL FEATURES

Length and width deviation	±0.5%	UNE-EN ISO 10545-2*
Side straightness deviation	±0.3 %	UNE-EN ISO 10545-2*
Orthogonality deviation	±0.5%	UNE-EN ISO 10545-2*
Surface flatness deviation	±0.5 %	UNE-EN ISO 10545-2*

FEATURES



Material with surface with the ability to produce reflections.



Material suitable for use on shower walls.



Material suitable for use on indoor walls.



Material recommended for installation on walls.

PHYSICAL PROPERTIES

Water absorption	BIII	ISO 10545-2*
Breaking strength	>900 N	>600 N*
Coefficient of linear thermal expansion	<6.6 1/(10E6*K)	
Crack resistance	PASS	ISO 10545-11*
Flammability	A1	EN 13501-1*

CHEMICAL PROPERTIES

Stain resistance	Clase 5	ISO 10545-14*
Resistance to chemicals	GA/GLA/GHA	ISO 10545-13*

PACKING

Sales units per box	0.672 M2/BOX
Sales units per pallet	67.2 M2/PAL
Sales units per unit	0.024 M2/PIECE
Sale unit	M2
Base unit	ST
Net weight	13.75 KG/M2
Gross weight	14.125 KG/M2

