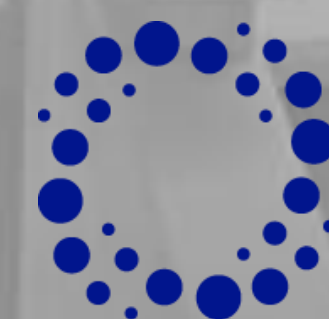


HAPPY 2026!!!



OpenScienceLab

UC3M (CC BY-NC-SA 2.0)



If science is not open... it is not going to help us

Open Science and Open Knowledge accelerate research and advance to face social challenges (COVID pandemic, SDGs).

The European Commission and many other political and scientific institutions, as well as research funding agencies, promote the urgent implementation of Open Science.

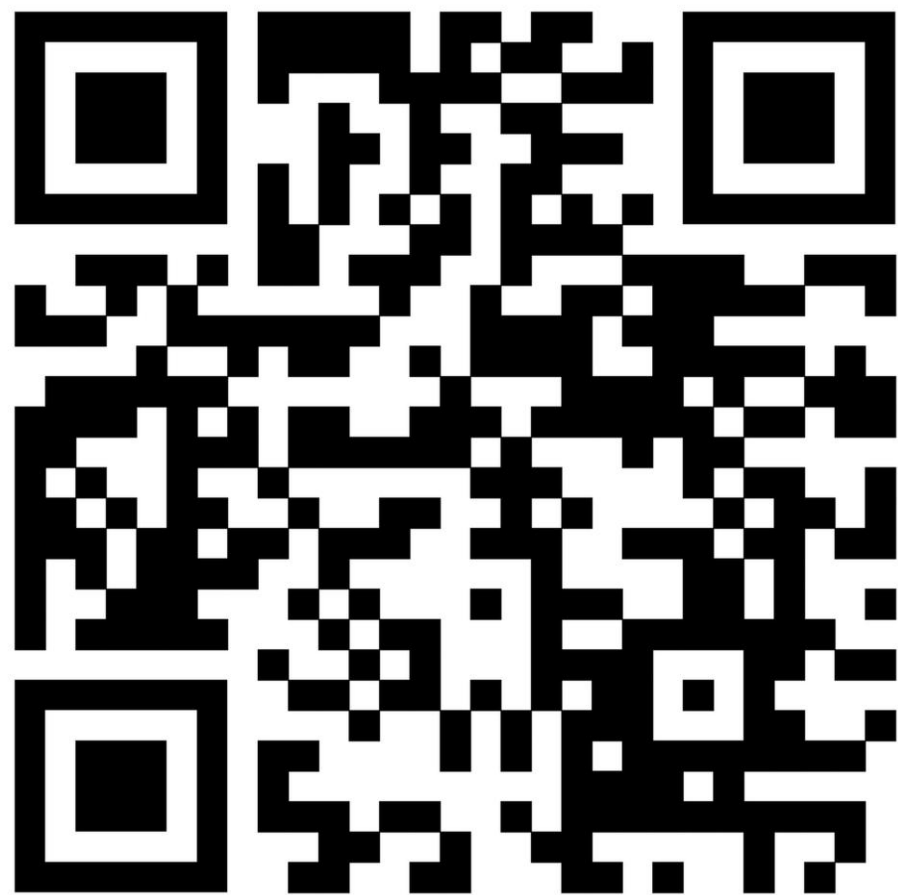
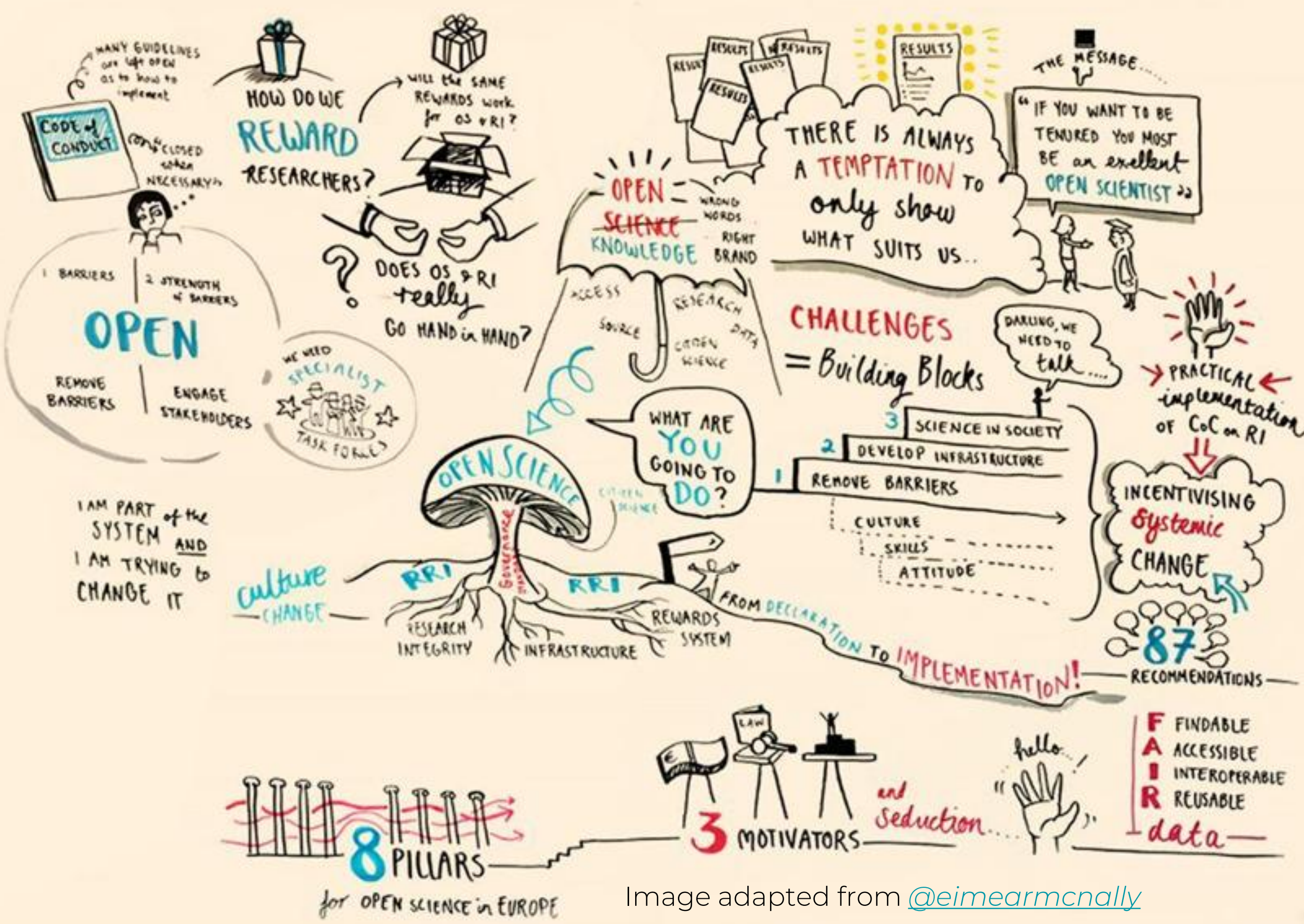


| Mon | Tue | Wed | Thu | Fri | Sat | Sun |
|-----|-----|-----|-----|-----|-----|-----|
| | | | 1 | 2 | 3 | 4 |
| 5 | 6 | 7 | 8 | 9 | 10 | 11 |
| 12 | 13 | 14 | 15 | 16 | 17 | 18 |
| 19 | 20 | 21 | 22 | 23 | 24 | 25 |
| 26 | 27 | 28 | 29 | 30 | 31 | |

JAN

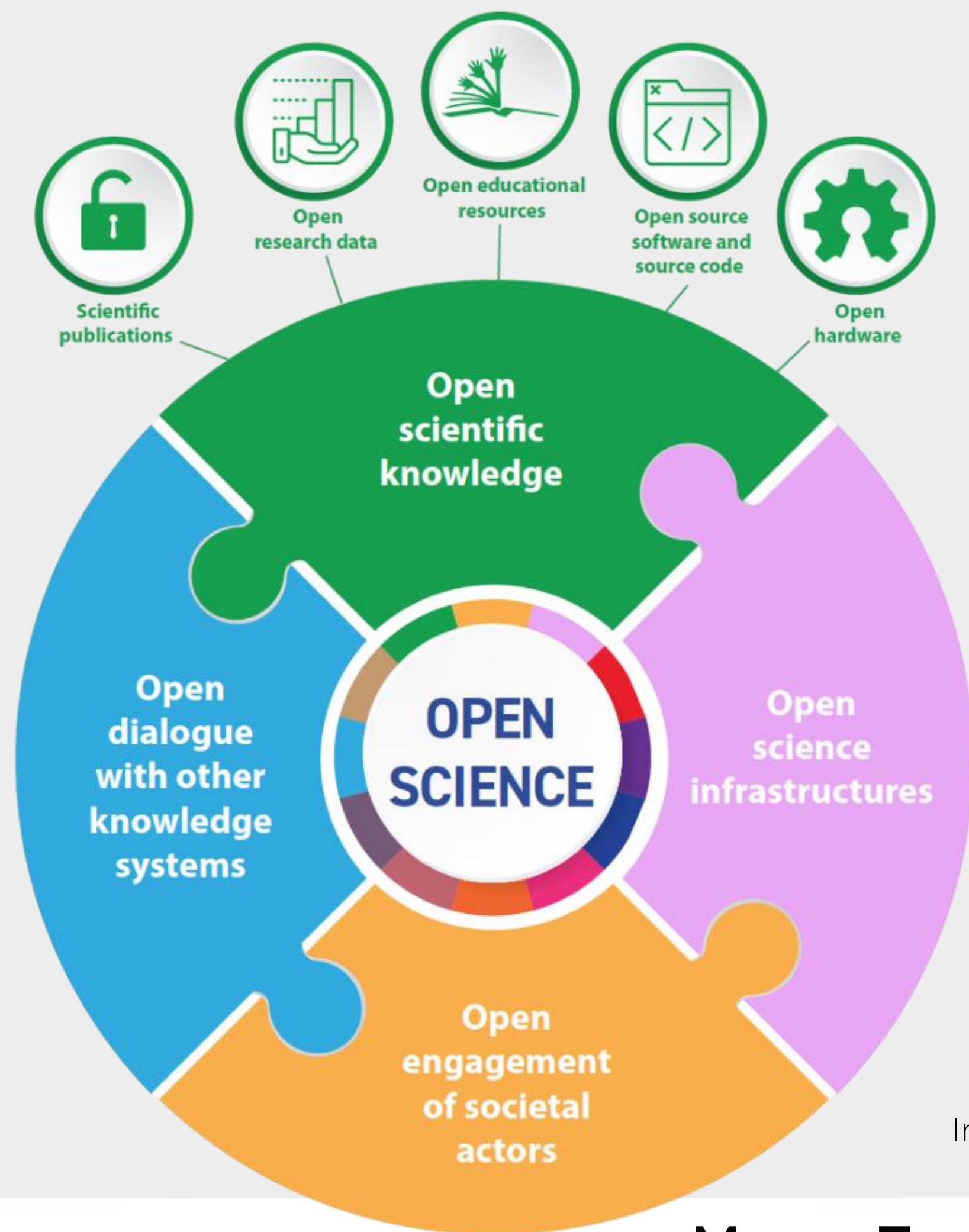
All researchers have to be committed to good practices in Responsible Research and Innovation (RRI) and are going to be particularly engaged this year with Open Science

Start this journey with a reflection every month to become an Open Scientist.



| Mon | Tue | Wed | Thu | Fri | Sat | Sun |
|-----|-----|-----|-----|-----|-----|-----|
| | | | | | | 1 |
| 2 | 3 | 4 | 5 | 6 | 7 | 8 |
| 9 | 10 | 11 | 12 | 13 | 14 | 15 |
| 16 | 17 | 18 | 19 | 20 | 21 | 22 |
| 23 | 24 | 25 | 26 | 27 | 28 | |

FEB



Open education is a way to democratise research and education, adding a positive value to the knowledge created at Universities

In March, we celebrate the Open Education Week. Join this annual celebration as an opportunity to learn about the latest achievements in Open Education worldwide.

Image adapted from the [UNESCO Recommendation on Open Science](#), p.11 (CC BY 3.0 IGO)



| Mon | Tue | Wed | Thu | Fri | Sat | Sun |
|-----|-----|-----|-----|-----|-----|-----|
| | | | | | | 1 |
| 2 | 3 | 4 | 5 | 6 | 7 | 8 |
| 9 | 10 | 11 | 12 | 13 | 14 | 15 |
| 16 | 17 | 18 | 19 | 20 | 21 | 22 |
| 23 | 24 | 25 | 26 | 27 | 28 | 29 |
| 30 | 31 | | | | | |

MAR



Persistent identifiers are the enablers for building trust and support openness in the digital era

Create/Update your ORCID profile orcid.org and remember to enter the name of your institution exactly as it appears in [ROR](https://ror.org).

Image adapted from Jørgen Stamp CC BY 2.5 Denmark licence digitalbevaring.dk



| Mon | Tue | Wed | Thu | Fri | Sat | Sun |
|-----|-----|-----|-----|-----|-----|-----|
| | | | 1 | 2 | 3 | 4 |
| 5 | 6 | 7 | 8 | 9 | 10 | 11 |
| 12 | 13 | 14 | 15 | 16 | 17 | 18 |
| 19 | 20 | 21 | 22 | 23 | 24 | 25 |
| 26 | 27 | 28 | 29 | 30 | | |

APR

Open Science practices are increasingly included and rewarded in the research assessment

Become a Full Open Science (FOS)
researcher: your university
supports you.



Image adapted ([CC0 Public Domain](#))



Mon

Tue

Wed

Thu


Fri

Sat

Sun

| | | | | | | |
|----|----|----|----|----|----|----|
| | | | | 1 | 2 | 3 |
| 4 | 5 | 6 | 7 | 8 | 9 | 10 |
| 11 | 12 | 13 | 14 | 15 | 16 | 17 |
| 18 | 19 | 20 | 21 | 22 | 23 | 24 |
| 25 | 26 | 27 | 28 | 29 | 30 | 31 |

MAY

 **OpenScienceLab**



Open Science is a must for all PhD candidates. It is preferable to learn these skills in the early research stages

Destination : *Open Science* **Operated by :** Skills4eosc

Passenger : *PhD Student*

Date : Wednesdays

Boarding time : 12:00

Landing time : 14:00

Gate : Moodle (Bb Collaborate)

Frequent Flyer


Bronze

Silver

Gold

Platinum

Platinum Singular



Catering on Board:
Open Science Café

Open Data

Open Access

Collaborative Science

Replicability

Rewards & Incentives

*** This flight operates from 13 March to 22 May 2024**

uc3m

**TICKET TO
OPEN SCIENCE**

[Universidad Carlos III de Madrid](#) (CC BY-NC-SA 2.0)



| Mon | Tue | Wed | Thu | Fri | Sat | Sun |
|-----|-----|-----|-----|-----|-----|-----|
| 1 | 2 | 3 | 4 | 5 | 6 | 7 |
| 8 | 9 | 10 | 11 | 12 | 13 | 14 |
| 15 | 16 | 17 | 18 | 19 | 20 | 21 |
| 22 | 23 | 24 | 25 | 26 | 27 | 28 |
| 29 | 30 | | | | | |

JUN

Findable

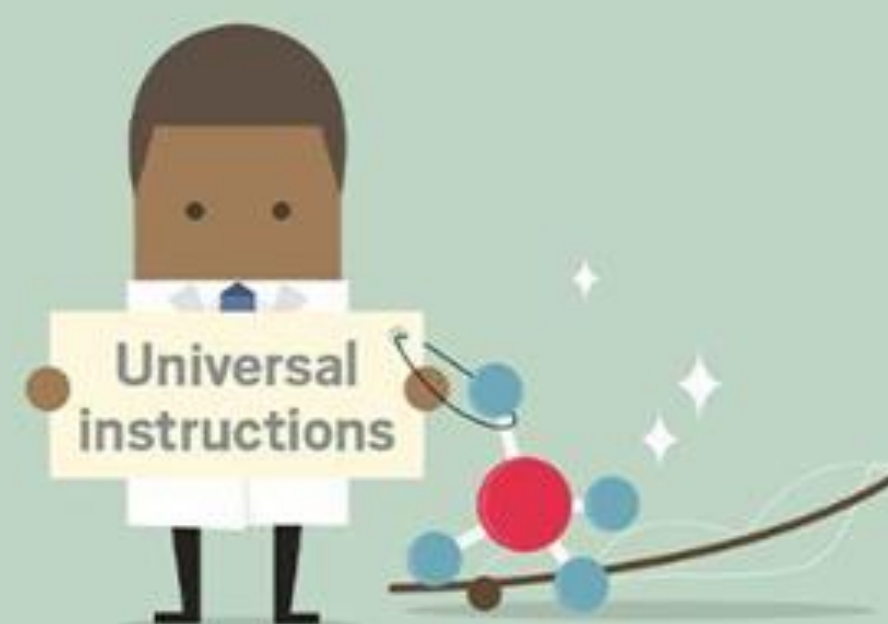


Accessible



The reproducibility and integrity of the research are essential principles of any scientific study

Interoperable



Reusable



Sharing and storing research data and making them FAIR (Findable, Accessible, Interoperable and Reusable) allows discoveries, new collaborations, the verification of results and the reproducibility. Share your data whenever possible and make a DMP (Data Management Plan).

Image adapted from [Yang H. Ku](#) / C&EN / Shutterstock



| Mon | Tue | Wed | Thu | Fri | Sat | Sun |
|-----|-----|-----|-----|-----|-----|-----|
| | 1 | 2 | 3 | 4 | 5 | 6 |
| 7 | 8 | 9 | 10 | 11 | 12 | 13 |
| 14 | 15 | 16 | 17 | 18 | 19 | 20 |
| 21 | 22 | 23 | 24 | 25 | 26 | 27 |
| 28 | 29 | 30 | 31 | | | |

JUL

Open science is a shift that entails the move from ‘publishing as fast as possible’ to ‘sharing knowledge as early as possible’



Switch your mind!

Start thinking about Open Science practices. Think about opening your publications, data, software, protocols, and methodologies in new eResearch collaborative spaces.

Image adapted ([CC0 Public Domain](#))



| Mon | Tue | Wed | Thu | Fri | Sat | Sun |
|-----|-----|-----|-----|-----|-----|-----|
| | | | | | 1 | 2 |
| 3 | 4 | 5 | 6 | 7 | 8 | 9 |
| 10 | 11 | 12 | 13 | 14 | 15 | 16 |
| 17 | 18 | 19 | 20 | 21 | 22 | 23 |
| 24 | 25 | 26 | 27 | 28 | 29 | 30 |
| 31 | | | | | | |

AUG

Openness is a clear invitation to quality, rigor and transparency

Open peer review implies greater responsibility and is based on trust and respect and promotes good Open Science practices, such as collaboration and recognition.

Find out how open peer review works in ORE (open-research-europe.ec.europa.eu), EC open access publishing platform.

AJ Cann (CC BY-SA)



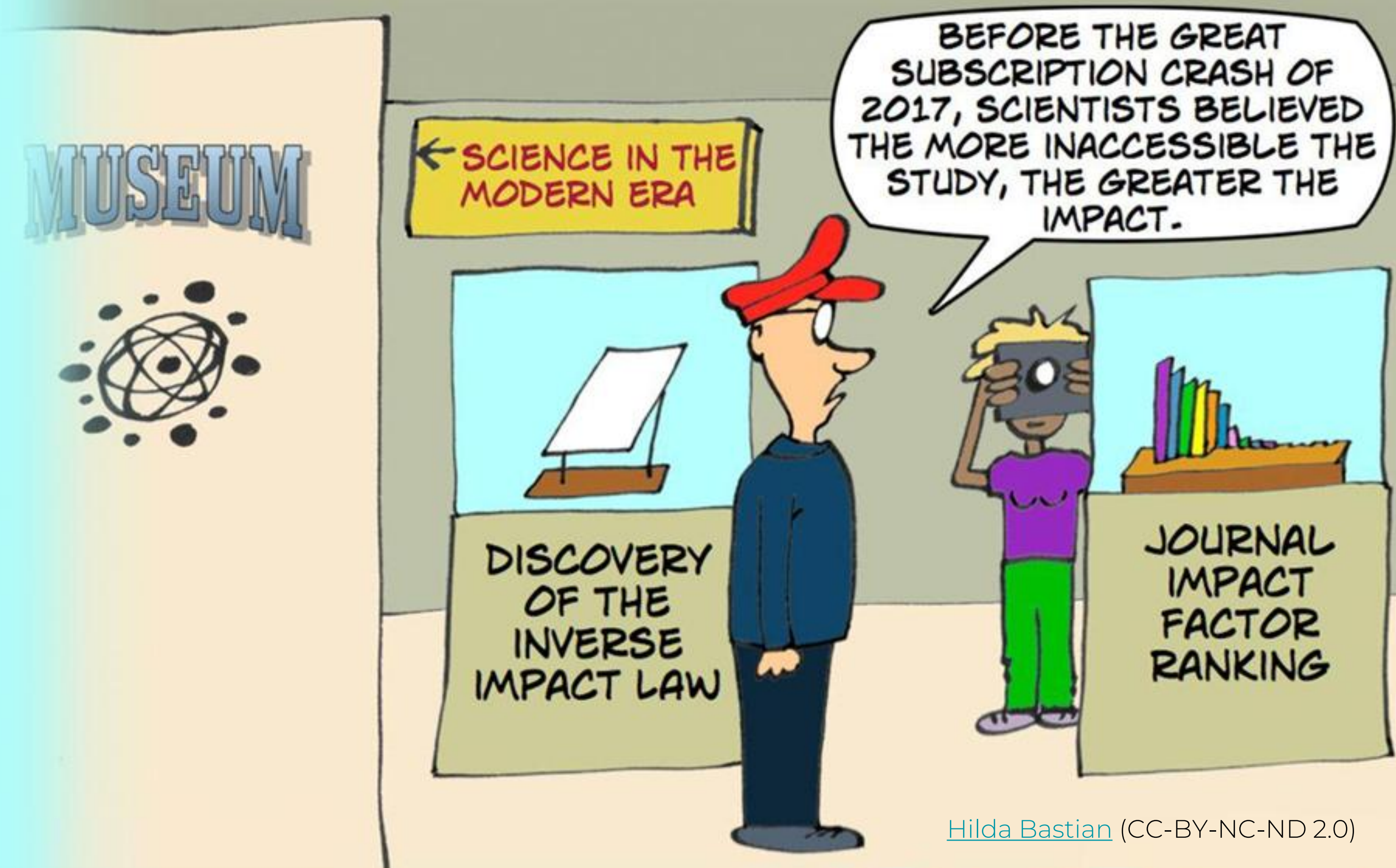
| Mon | Tue | Wed | Thu | Fri | Sat | Sun |
|-----|-----|-----|-----|-----|-----|-----|
| | 1 | 2 | 3 | 4 | 5 | 6 |
| 7 | 8 | 9 | 10 | 11 | 12 | 13 |
| 14 | 15 | 16 | 17 | 18 | 19 | 20 |
| 21 | 22 | 23 | 24 | 25 | 26 | 27 |
| 28 | 29 | 30 | | | | |

SEP

Open access to publications (OA) remains a core element of Open Science

Join the Open Access week. Always upload your publications to the institutional repository and retain your rights as long as you publish in scientific publishers with a subscription model. Ask, reflect and open your publications as soon as possible.

See: openpolicyfinder.jisc.ac.uk



Hilda Bastian (CC-BY-NC-ND 2.0)



| Mon | Tue | Wed | Thu | Fri | Sat | Sun |
|-----|-----|-----|-----|-----|-----|-----|
| | | | 1 | 2 | 3 | 4 |
| 5 | 6 | 7 | 8 | 9 | 10 | 11 |
| 12 | 13 | 14 | 15 | 16 | 17 | 18 |
| 19 | 20 | 21 | 22 | 23 | 24 | 25 |
| 26 | 27 | 28 | 29 | 30 | 31 | |

OCT



Today more than ever we must do science with and for society

Citizen science is both an objective and a facilitator of Open Science and a fundamental component in the new [European Research Area, ERA](#).

Try including societal groups (citizens, organizations) in your research and discover their potential.

Image by [Vlad Tchompalov](#) (CC0) from Unsplash



| Mon | Tue | Wed | Thu | Fri | Sat | Sun |
|-----|-----|-----|-----|-----|-----|-----|
| | | | | | | 1 |
| 2 | 3 | 4 | 5 | 6 | 7 | 8 |
| 9 | 10 | 11 | 12 | 13 | 14 | 15 |
| 16 | 17 | 18 | 19 | 20 | 21 | 22 |
| 23 | 24 | 25 | 26 | 27 | 28 | 29 |
| 30 | | | | | | |

NOV



Open Science enables a healthier research environment and helps researchers promote their work

Think about the most important things that you have achieved or learned in Open Science and reflect on where you go next. Create a to-do list for the year 2026 to keep improving your Open Science performance. If you still have any doubts?

opensciencelab.uc3m.es

DEC



| Mon | Tue | Wed | Thu | Fri | Sat | Sun |
|-----|-----|-----|-----|-----|-----|-----|
| | 1 | 2 | 3 | 4 | 5 | 6 |
| 7 | 8 | 9 | 10 | 11 | 12 | 13 |
| 14 | 15 | 16 | 17 | 18 | 19 | 20 |
| 21 | 22 | 23 | 24 | 25 | 26 | 27 |
| 28 | 29 | 30 | 31 | | | |