



SNACKS

MOZZARELLA STICKS 8

Served with marinara sauce.

WAVY FRIES 5

SOFT PRETZEL TWISTS AND QUESO 5

Served with queso cheese.

BONELESS WINGS 9

Tossed in your choice of sauce.

BONE-IN WINGS 15

Tossed in your choice of sauce.

CHIPS & DIP 8

Tortilla chips, salsa, and queso cheese.

MAC & CHEESE BITES 8

QUESADILLA 7

Cheese, chicken, peppers, and onions.

MINI CORN DOGS 7

BREAKFAST

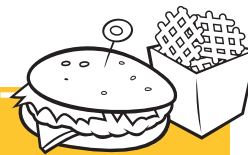
BREAKFAST SANDWICH 4

Egg and cheese on an english muffin or bagel. Bacon or sausage +1.

BAGEL & CREAM CHEESE 3

HASHBROWNS 2.50

ENTREES



CHICKEN TENDERS (4 pc.) 9

Served with your choice of dipping sauce.

CLASSIC CHEESEBURGER 7

Topped with American cheese, lettuce, tomato, onion, and pickle. Make it a double +3

PHILLY CHEESESTEAK 11

Sliced prime rib topped with cheese, mushrooms, and onions.

CHICKEN SANDWICH 9

Topped with American cheese and pickles.

Deluxe:

Lettuce, Tomato, Onion +1.50

DELI SUB 7

Topped with ham or turkey and American cheese.

Deluxe:

Lettuce, Tomato, Onion +1.50

HOT DOGS (2) 8

LOADED NACHOS 11

Tortilla chips topped with beef or chicken, queso, onions, and jalapenos. Served with salsa or sour cream.

~ MAKE IT A MEAL! ~

Wavy Fries & Drink

+5

PIZZA



CHEESY GARLIC STICKS 8

PERSONAL PIZZA 10

LARGE PIZZA 22

Basic pizza includes cheese and your choice of sauce: Marinara, Ranch, BBQ, Buffalo

TOPPINGS

Meats

+1.00/ea Personal

+2.00/ea Large

Pepperoni

Sausage

Chicken

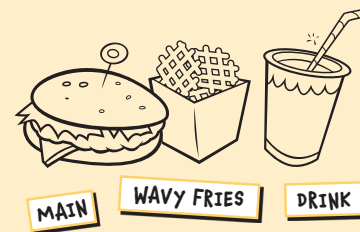
Veggies

+.50/ea Personal

+1.00/ea Large

Mushrooms

KIDS MEALS



CHICKEN TENDERS 8

CHEESEBURGER 7

MINI CORN DOGS 6

DESSERTS



ICE CREAM

1.80

2.75

4

BEAR SUNDAE 7.50

S'MORES SUNDAE 7

SALTED CARAMEL BROWNIE SUNDAE 7

CHOCOLATE CHIP COOKIE SUNDAE 7

CHOCOLATE CHIP COOKIE 4

SALTED CARAMEL BROWNIE 5

ICE CREAM FLOAT 5

DRINKS



FOUNTAIN SODA (24oz) 3.50

KIDS JUICE 2.50

MILK 3

BOTTLED WATER 1.50

HOT COFFEE 2

COLD BREW COFFEE 5

Menu items & prices are subject to change. Check with staff for current pricing.

YOGI BEAR and all related characters and elements © & ™ Hanna-Barbera. (s25)