



IV DRACHENFEST A DEALS GAP WEEKEND GETAWAY

Wilderness Trail Region Porsche Club of America

THURSDAY TO SUNDAY – AUGUST 1st to AUGUST 4th, 2024
RAIN OR SHINE

RSVP at [WTRPCA.ORG](https://www.wtrpca.org) or via direct link: [wtrpca.org/events/drachenfestiv](https://www.wtrpca.org/events/drachenfestiv)



ABOUT THE EVENT

IV DrachenFest is not just a weekend trip; it's an opportunity to forge lasting bonds and create cherished memories. This adventure will take you through the heart of the Great Smoky Mountains, Nantahala, Cherokee, and Chattahoochee-Oconee National Forests, covering about 750 miles of picturesque landscapes and exhilarating roads, an unforgettable mountain getaway.

Get ready to navigate the renowned Tail of the Dragon, the serpentine Hellbender, the historic Moonshiner 28, the breathtaking Cherohala Skyway, and the challenging Chasing the Dragon Hillclimb. We'll also cruise along The Gauntlet, Georgia's best kept secret and explore many hidden backroads that will only be disclosed closer to the event (we want to keep them a secret!). We have also planned a visit to Helen, GA – a piece of Bavaria, Germany at our hotel's door!

Our base for this exceptional journey is the elegant Brasstown Valley Resort and Spa. Nestled in the Blue Ridge Mountains in Young Harris, Georgia and only 4 miles north of North Carolina, at an elevation of 2,150 feet, this resort offers a serene mountain retreat experience. Below, you'll find all the details you need for lodging, including how to book your room with our group discounted rate.

For those eager to start early, we've arranged a special drive on Thursday, August 1st, beginning at 1:00 p.m. This 100-mile route promises to be both short and spectacular. If you choose to join us on Thursday, you can conveniently check into the resort afterward (no need to arrive a day earlier, on Wednesday).

As we fine-tune the event, expect some minor adjustments to the schedule and arrangements. We're meticulously organizing every aspect, from restaurant reservations to route planning, to ensure a seamless and enjoyable experience for everyone this August.



Brasstown Valley

RESORT & SPA



Disclaimer: This photo was not taken during a PCA event neither by a PCA member. Source: Google Images

LODGING / HOTEL

The Brasstown Valley Resort & Spa, nestled in the heart of Young Harris, Georgia, is an idyllic escape from the hustle and bustle of daily life and it is this event's main hosting hotel. This secluded mountaintop retreat, perched at an elevation of 2,150 feet and enveloped by the stunning Blue Ridge Mountains, offers a serene sanctuary where worries seem to vanish into thin air. The Brasstown Valley is a gem hidden in the vastness of the North Georgia Mountains, delivering an experience that's both remote and rich with amenities. It's a rare find, offering a perfect blend of natural beauty and luxurious comfort, making it an ideal destination regardless of the season.

The resort sits on ground sacred to the Cherokee people with spa treatments, inspired by Cherokee traditions, including options like the rejuvenating "7 Clan Ritual," which features a mud mask, European dry body brushing, and massage, making for a profoundly detoxifying and enriching experience. Outdoor enthusiasts will be thrilled with the resort's equestrian facilities, the only full-service mountain resort in North Georgia to offer a unique horseback trail-riding experience. With over 500 acres of exploration space and nearly 10 miles of hiking trails, guests are invited to immerse themselves in the beauty of nature. Whether it's a leisurely stroll through the woods or a round of golf on the resort's pristine course, Brasstown Valley caters to all preferences.

Guests can also unwind by the lodge's grand fireplace, soaking in the panoramic vistas of the Blue Ridge Mountains, or take a dip in the indoor pool. Located at **6321 Highway 76, Young Harris, GA 30582**, the Brasstown Valley Resort & Spa is more than just a place to stay.

BOOKING INFORMATION

Before making your reservation, review the whole event's program to decide when you should check-in and check-out. Our suggestion is check-in 8/1 (Thu) and out 8/4 (Sun) – 3 nights.

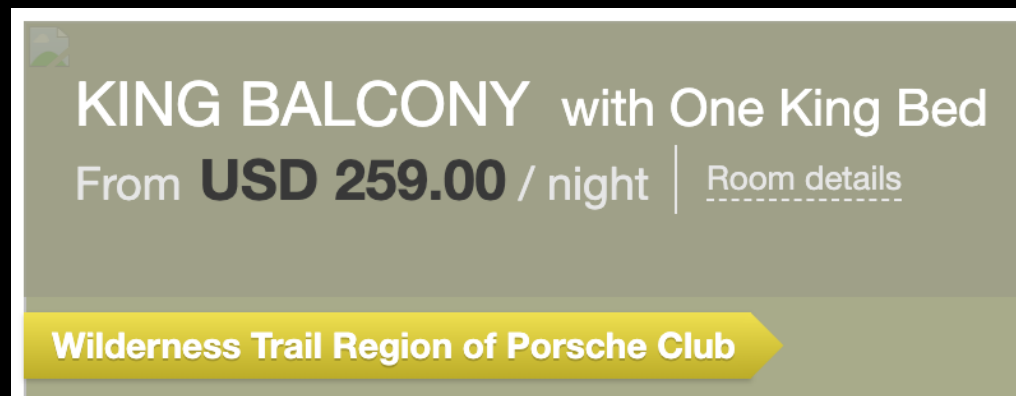
LINK FOR RESERVATION:

<https://brasstownvalley.reztrip.com/ext/promoRate?property=1360&mode=b&pm=true&sr=909874&vr=3>

ROOMS

Standard King / Standard Double King: Group Rate \$259/night + 12% (taxes) + \$15 resort fee (normal rate is \$284)

When booking, make sure you're seeing the \$259 rate and the words 'Wilderness Trail Region of Porsche Club' like indicated below:



KING BALCONY with One King Bed
From **USD 259.00** / night | [Room details](#)

Wilderness Trail Region of Porsche Club

If you're not seeing \$259/night, try to copy and paste the link instead of clicking on the link. If you're still having issue, call them at 706-379-9900 and inform the WILDERNESS TRAIL REGION PORSCHE CLUB (WILD24) group rate.

NOTE: We have a 100-miles warm-up drive on Thursday (08/01) at 1:00 p.m., leaving from the resort's parking area. You can meet for the drive and check-in at the hotel later after the drive or arrive on Wednesday (07/31) if you like. Group rates are offered two days before and after the event date. If you need assistance booking your room, call 706-379-9900 and inform the **WILDERNESS TRAIL REGION PORSCHE CLUB (WILD24)** group rate.

NOTE 2: Our Sunday journey will conclude at 3:30 p.m. at the resort. You can choose to drive home from wherever along the way, return to the resort, and then go home or stay an extra night if you choose. Group rates are offered two days before and after the event date. If you need assistance booking your room, call 706-379-9900 and inform the **WILDERNESS TRAIL REGION PORSCHE CLUB (WILD24)** group rate.

Resort lodge or cottage guestrooms include up to four (4) occupants at the group rate. Balcony or Fireplace accommodations are offered at an additional charge of \$30 dollars per room per night, based upon availability. Please call the hotel reservations department for rates and availability.

TERMS & CONDITIONS

All reservation requests require a credit card to secure the reservation. Cancellations or changes received seven days or more before arrival date will be accepted without charge. Cancellations or changes received six days or less prior to your arrival date will result in a charge of one night's room and tax. This policy includes cancellation of any portion of stay, even if part of reservation is kept. Please record and keep your cancellation number as "No-Show" reservations will be charged at 100% of the daily rate of the reservation for the entire reserved stay. Check rates, consider packages and availability, and make a reservation by calling our toll-free number 1.800.201.3205 or book online. Please note: All sleeping room rates are subject current Taxes and a Resort Service Fee. The fee is \$25 per room per night. The fee is subject to tax of 7% for a total of \$26.75 per day. Guest is responsible for making reservations for any and all activities prior to arrival to ensure availability. Refunds will not be provided due to lack of availability.



Brasstown Valley

RESORT & SPA

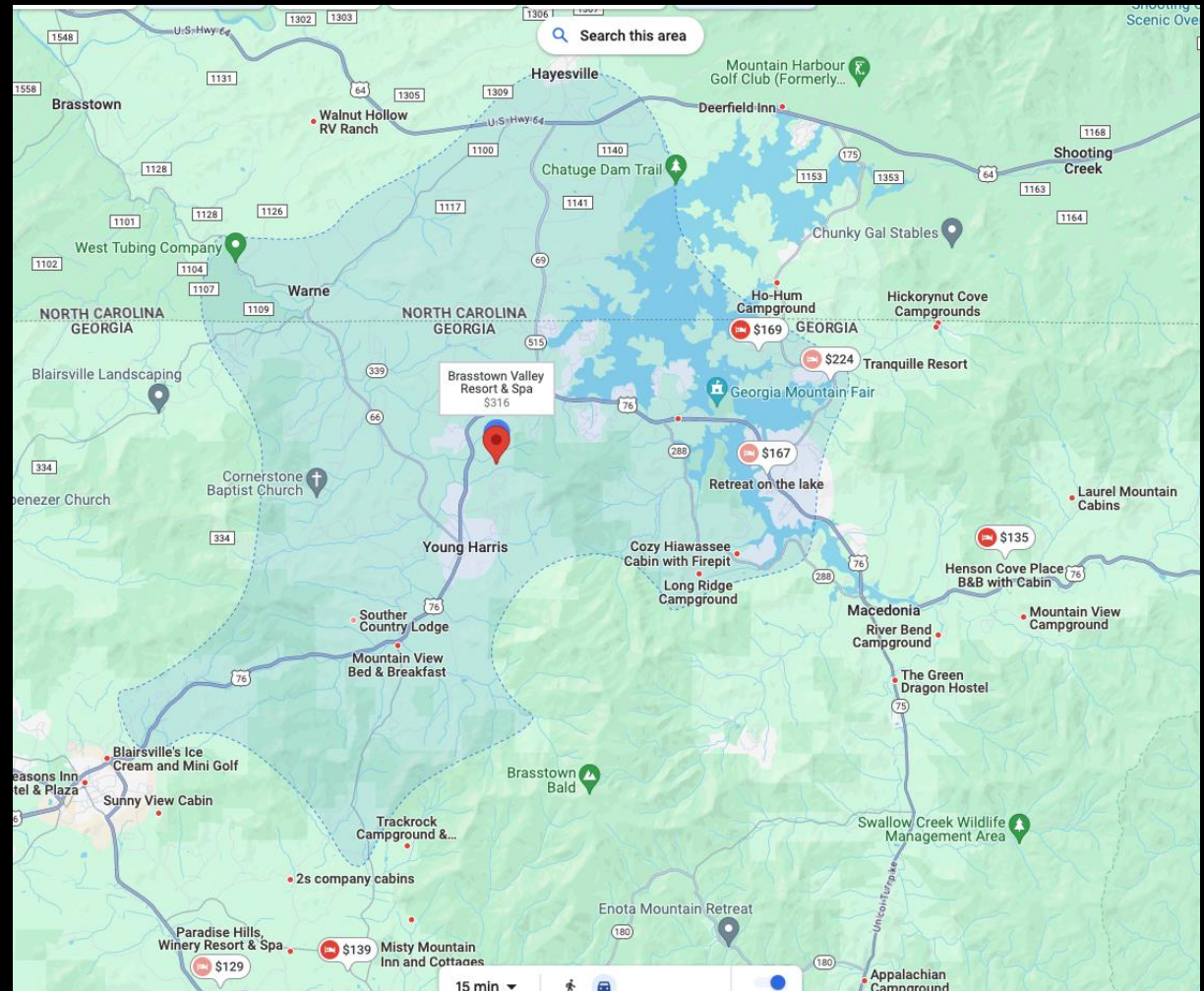


Disclaimer: This photo was not taken during a PCA event neither by a PCA member. Source: Google Images

OTHER HOTELS NEARBY

We have not made any arrangements with the hotels below neither we know if they have rooms available. If you decide not to stay at the event's hosting Hotel, the Brasstown Valley Resort & Spa, here are a few suggestions:

- The Ridges Resort on Lake Chatuge (3.6 miles away) – Rate ~\$240
 - o <https://lakechatugelodge.com/>
- Holiday Inn Express & Suites Hiwassee (7.5 miles away) – Rate ~\$195
 - o Call: (706)896-8884
- Tranquille Resort (9.6 miles away) – Rate \$259
 - o <https://tranquilleresort.com/>



Every red dot in this image above is a hotel or vacation rental that's within 5 to 25 minutes away

AGENDA AT A GLANCE

THURSDAY (08/01) – 100 mi. / 2:30h drive + stops – Radio Channel 5.0

- 01:00 p.m.: Meet at the Resort Parking Lot for the **Bavarian Run**
- 01:15 p.m.: Safety Meeting
- 01:25 p.m.: Start driving
- 02:15 p.m.: Overlook Stop (18 cars)
- 02:45 p.m.: Resume driving
- 03:40 p.m.: **Restroom** stop at Walmart
- 04:10 p.m.: Resume driving
- 05:00 p.m.: Arrive at Hofbräuhaus Restaurant for Happy Hour & Dinner

Note:

- Ask your lead car to share his phone # with you.
- Arrive with a full tank for the drive. No gas stop planned on Thursday.
- There is no lunch stop on this drive. We will have dinner at the end of the drive at the Hofbräuhaus restaurant in Helen (German Town)
- For insurance purpose, PCA event ends when we arrive at the restaurant
- Those not meeting 1:00 p.m. for the drive can come meet us for dinner!
- Head back to the resort on your own (30 miles away)
- Get gas on your way to the hotel (there is a Citgo and Sunoco 5 min away from hotel)
- Bring a Radio/WalkieTalkie/FRS Radio – See recommendation more below if you don't have one

Bavarian Run – Thursday – 1:00 p.m.

Ready for a bit of Bavarian charm mixed with some exhilarating driving? Let's kick-off this weekend with the "Bavarian Run," a scenic yet thrilling drive through some of Georgia's most beautiful landscapes. We're kicking off at 1:00 p.m. in the resort's parking lot for an afternoon drive you won't forget. Our route takes us from Brasstown Valley over the stunning **Brasstown Bald Mountain**. Next up, we're hitting the **Richard B. Russell Scenic Highway**, tucked away in the **Chattahoochee National Forest**. Get ready for a ride that's like a rollercoaster – Porsche paradise, its curve after curve. Don't forget to catch your breath at the Overlook, where we'll stop to soak in some breathtaking views. Once we've indulged in the natural beauty, we'll weave our way through more mountain roads. A quick restroom pit stop at the Walmart Supercenter is on the cards, then we're off to the evening's highlight: dinner in **Helen, GA**, at the **Hofbräuhaus** Restaurant. This place is a little piece of Germany right in Georgia, with its authentic decor and architecture. Whether you're up for dining indoors or by the river, Hofbräuhaus delivers. And those wall murals? They're the cherry on top. We estimate the drive will take about 2 hours and 30 minutes, covering around 100 miles. We're planning two 30-minute stops and aim to hit happy hour and dinner at Hofbräuhaus around 5:00 p.m. Remember, for insurance purposes, our PCA event officially ends once we reach the restaurant. If you're not joining the drive, feel free to meet us there for a great time. It's about a 35-minute drive back to the resort from Helen or check more below restaurants suggestions that are closer to the hotel.

So, who's up for a little Bavarian flair mixed with some Porsche fun? Let's make some memories!

Hofbräuhaus Restaurant: <https://www.hofbrauhaushelenga.net/>

Route: Coming a few days before the event!

FRIDAY (08/02) – 260 mi. / 6:00h drive + stops – Radio Channel 5.0

- 07:30 a.m.: Last chance to get gas (serious folks, just get gas the evening before)
- 08:00 a.m.: Meet at the Resort Parking Lot for the **Dragon Endurance Run**
- 08:15 a.m.: Safety Meeting
- 08:25 a.m.: Start driving
- 10:45 a.m.: **Restroom** Stop / Scenic Stop at Fontana Dam
- 11:10 a.m.: Resume driving
- 12:00 p.m.: Arrive at 129 Hub for Lunch / **Restroom** Stop
- 02:00 p.m.: Resume driving
- 03:00 p.m.: Arrive at Shell **Gas Station** in Robbinsville / **Restroom** Stop
- 03:30 p.m.: Resume driving
- 04:30 p.m.: Arrive at Hot Spot **Gas Station** in Robbinsville / **Restroom** Stop
- 05:00 p.m.: Resume driving
- 05:45 p.m.: Arrive **back at the Resort**
- 06:30 p.m.: Dinner (on your own – see list of restaurant options more below)
- 08:30 p.m.: Drinks under the stars – Let's meet around the firepit

Note:

- Ask your lead car to share his phone # with you.
- Arrive for the drive with a full tank and get gas when drive ends (before arriving at the hotel)
- Pack a snack to eat during the stops.
- Watch your bladder (Check the restroom stops above)
- The drive is called 'Endurance' for a reason! It is a packed day! But we won't push too hard on Saturday and Sunday... You can do it!

Dragon Endurance Run – Friday – 8:00 a.m.

Get ready for an adrenaline-packed 260 miles journey with the Dragon Endurance Run. This thrilling drive starts with the captivating beauty of **Wayah Road**, where twists and turns are accompanied by stunning vistas. Next, we shift gears onto the **Moonshiner 28**, cruising through scenic landscapes that are sure to impress. The route then guides us through the engineering marvel of **Fontana Dam**, followed by the serpentine **Hellbender**, where the road dances with the contours of the land. But that's just a warm-up because next up is the legendary **Tail of the Dragon** – not once, but twice, to double the excitement! After taming the Dragon, we'll revisit the **Moonshiner 28** for an extended exploration of this enchanting road, taking us toward Franklin. This longer stretch promises more captivating views and exhilarating driving experiences heading back to Brasstown Valley Resort. This drive is a marathon of exhilaration, curves, mountain vistas, and breathtaking scenery. It's a day where passengers can indulge in the visual feast around them, while drivers focus on the exhilarating challenge of the road ahead. Prepare for a day filled with the spirit of adventure and Porsche passion!

[Route: Coming a few days before the event!](#)

SATURDAY (08/03) – 200 mi. / 4:45h drive + stops – Radio Channel 5.0

- 08:00 a.m.: Last chance to get gas (serious folks, just get gas the evening before)
- 08:15 a.m.: Meet at the Resort Parking Lot for the **Stairway to Heaven Stampede**
- 08:30 a.m.: Safety Meeting
- 08:40 a.m.: Start driving
- 10:10 a.m.: Scenic Stop at Maple Springs Observation Deck (only “nature” **restroom**)
- 10:40 a.m.: Resume driving
- 11:10 a.m.: Scenic Stop at Santeetlah Overview at Cherohala Skyway
- 11:30 a.m.: Resume driving
- 12:15 p.m.: Arrive at Iron Works Grille / La Loteria for lunch / **Restroom** Stop
 - Get gas on your own at **Exxon** (450 Cherohala Skyway, Tellico Plains, TN) or **Shell** (141 Bank St, Tellico Plains, TN)
- 02:15 p.m.: Resume Driving
- 03:00 p.m.: Scenic Stop at Hiwassee Dam / **Restroom** Stop
- 03:15 p.m.: Resume driving
- 04:30 p.m.: Arrive **back at the Resort**
- 06:00 p.m.: Meet for Dinner (restaurant information coming later – but it’s nearby)
- 08:30 p.m.: Drinks under the stars – Let’s meet around the firepit

Note:

- Ask your lead car to share his phone # with you.
- Arrive for the drive with a full tank and get gas when drive ends (before arriving at the hotel)
- Pack a snack to eat during the stops.
- Watch your bladder (Check the restroom stops above)
- We will arrive earlier back at the resort compared to Friday, yay!

Stairway to Heaven Stampede – Saturday – 8:15 a.m.

Strap in for the "Stairway to Heaven Stampede," a drive that's literally a slice of Porsche heaven! This route is a treat for anyone who loves the thrill of the road, taking us high into the clouds for some stellar views. Our adventure begins with a drive towards Robbinsville via US-129N. But that's just the warm-up. We're diving into the scenic roads around **Lake Santeelah**, leading us to the adrenaline-pumping "**Chasing the Dragon Hillclimb**." This road's a real palm-sweater but wait till you see the view from the top – absolutely worth it! Next, we cruise onto the **Cherohala Skyway**. If you're in it for sweeping corners and show-stopping views, this is your playground. We're talking a 41-mile stretch that takes us from an elevation of about 930 feet near Tellico Plains to a sky-touching 5,390 feet at **Santeetlah Overlook**. Make sure your cameras are ready for a photo op at the Santeetlah Scenic pull-off – the highest point on the skyway. Feeling peckish? We'll grab lunch at Iron Works Grill and La Loteria to refuel for the next leg of our journey. Post-lunch, we're taking the scenic route south via **TN-68**, a pristine drive with gorgeous country settings, mountains, creeks, and quaint little towns. Our drive then weaves through **NC-294** towards Murphy, only a short 20 miles from Brasstown Valley Resort. We'll take a detour for some stunning lake views around **Hiwassee Lake** and a quick stop at **Hiwassee Dam**, then wind our way back through the mountain roads of Murphy before heading back to Brasstown Valley Resort. This drive isn't just about endurance; it's about soaking in every mile of its 200-mile span, all packed in pure driving joy. The Stairway to Heaven Stampede is all about the experience – where we like our drives "shaken, not stirred."

[Route: Coming a few days before the event!](#)

SUNDAY (08/04) – 168 mi. / 4:00h drive + stops – Radio Channel 5.0

- 08:30 a.m.: Last chance to get gas (serious folks, just get gas the evening before)
- 09:00 a.m.: Meet at the Resort Parking Lot for the **Gauntlet** drive
- 09:10 a.m.: Safety Meeting
- 09:20 a.m.: Start driving
- 10:20 a.m.: Restroom stop at Smithgall Woods Visitors Center / **Restroom** Stop
- 12:15 p.m.: Arrive at Toccoa Riverside Restaurant for lunch / **Restroom** Stop
- 02:00 p.m.: Resume Driving
- 03:30 p.m.: Arrive **back at the Resort** and end of PCA event

Note:

- Ask your lead car to share his phone # with you.
- Arrive for the drive with a full tank – No Gas Stop planned today!
- Pack a snack to eat during the stops.
- Watch your bladder (Check the restroom stops above)
- If you're driving home from anywhere during the drive, let your lead car know please.

The Gauntlet – Sunday – 9:00 a.m.

The Gauntlet route is a journey packed with blind spots, steep inclines, and fast declines, offering an adrenaline rush like no other. We will be tackling the **Richard B. Russell Scenic Highway**, nestled in the eastern side of the **Chattahoochee National Forest**. Expect a rollercoaster of a ride with plenty of curves to test your Porsche's agility. Our first pit stop? **Smithgall Woods State Park**. Take a quick restroom break, but don't get too relaxed - more thrilling bends are up ahead as we head to **Toccoa Riverside** Restaurant for lunch. But first, we'll conquer **Blood Mountain** – it's a rite of passage on this route! Post-lunch, we'll mellow the pace a bit as we meander around **Blue Ridge Lake**, then onto **Nottely Lake**, soaking in the gorgeous views. Finally, we'll cruise back to the hotel, winding down from our adventure. This route is a favorite in North GA among motorcycle enthusiasts and is part of the legendary Gauntlet. But on this drive, it's all about our Porsches and the smiles they'll bring to our faces as we navigate these exciting roads.

So, strap in, start your engines, and let's hit the road for an unforgettable Porsche journey!

Route: [Coming a few days before the event!](#)

RADIO

Don't forget to bring a radio (2-Way radio/WalkieTalkie/FRS Radio). Even if you think you won't need it! The BaoFeng UV-5R 8-Watt Ham Radio BaoFeng Radio with Extra 1800mAh Battery is less than \$40 on Amazon.

Other models recommended are: Radioditty FS-T1 and Midland LXT630VP3.

We will use channel 5.0 / Frequency 462.662 and if you got a BAOFENG UV-5R and can't get it on frequency 462.662, let us know and we will send you the instructions – it's easy!

SELF-SERVICE ROUTES

Self-Service Routes offer alternatives for those who chose not to participate in the organized guided drives or just wish to head on your own for a few hours or a day. These drives offer the flexibility to go when and where you want at your own pace. Note that on self-service routes, you're on your own and not part of the PCA event, therefore, PCA insurance is not applicable.

Appalachian History Scenic Tour

Gear up for a drive that promises a blend of scenic beauty, historical charm, and some thrilling roads. We're talking about a relaxed yet captivating journey that's perfect for any Porsche enthusiast. Kick things off with a stop at the Popcorn Overlook on US Hwy. 76. Trust me, the views here are a great way to start our day. Next, head to the Foxfire Museum in Northeast Georgia. Get ready for a fascinating glimpse into early mountain life in North Georgia – it's like stepping back in time! But hey, it's not just about history. It is also for some fantastic driving. Cruise along War Woman Road, a route that leads you to Highlands, NC. Brace yourself for some mouth-watering BBQ here – because what's a Porsche drive without some good eats? Dry Falls waterfall is up next. It's a quick stop, but this beautiful spot is a must-see. After that, get ready for more curvy roads and long sweeping turns as you make your way to Hayesville, NC. The cherry on top? A visit to Eagle Fork Vineyards. Enjoy some wine tasting and soak up the beautiful vineyard vibes. Then, you're just a 10-minute drive away from Lake Chatuge – a perfect spot to relax before you head back to the resort. This drive has a bit of everything – history, nature, great food, wine, and, most importantly, endless fun.

- Distance: 126 miles, 3 hrs + stops
- Restaurant suggestion: Highlands Smokehouse

[Route: Coming a few days before the event!](#)

The War Woman Wander: Helen's Twisty Tour

Traverse the road less traveled! The "War Woman to Helen-Back Drive," a journey filled with twists and turns that only a Porsche can handle with grace. This drive starts with the scenic War Woman Road, zigzagging through the beautiful Black Rock Mountain State Park area. Imagine the thrill of navigating this road with your Porsche! The adventure doesn't stop there. Take a detour to Helen, Georgia, for lunch at the charming Hofbräuhaus Restaurant. Think of it as a little slice of Germany in the heart of Georgia – or pick any restaurant in Helen, there are many German restaurants available and others. The vibe at Hofbräuhaus is authentic with delightful decor and architecture, not to mention a menu that'll transport you straight to Bavaria. Choose between cozy indoor seating or enjoy the scenic riverside view. And don't miss out on the amazing wall murals – they're a feast for the eyes! The fun doesn't have to stop there. You have the afternoon to explore the enchanting Helen by yourself and you also got a couple of choices for your drive back to the resort. For those who love a twisty route, take GA-348 W – it's about 50 minutes of pure driving pleasure. If you prefer a hilly mountain path, then GA-17 N is your best bet, offering a quicker ride back, approximately 40 minutes, rounding off the trip back at Brasstown Valley.

- Distance: 137 miles, 3:30 hrs + Stops
- Restaurant Suggestion: Hofbrauhaus

[Route: Coming a few days before the event!](#)

Rabun County Rennsport

On this drive you will be hitting the road for the Rabun County Rennsport adventure. This route's got everything – twists, turns, and a taste of Germany in Georgia! Start off on Highway 64, heading towards Franklin, NC. Strap in for a lively drive with a mix of paces. As you zip towards Highlands, NC, get ready for some exhilarating twists – this part of the journey is a real treat for anyone who loves a good curve. Then pause to catch your breath at Bridal Veil Falls – it's a sight you won't want to miss. Then, it's full steam ahead into Highlands, NC, before you switch gears onto Highway 28 for an extra dose of our favorite winding roads. Next up, Warwoman Road – a route that's as fun as it sounds! You'll glide through Clayton, feeling every bend and turn. The drive continues as you weave onto Highways 197 and 356, cruising your way to Helen for a meal at Hofbräuhaus Restaurant. Trust me, this place is a slice of Germany right here in Georgia. The decor, architecture, and menu are spot-on. Whether you're in the mood for a cozy indoor meal or riverside dining, Hofbräuhaus has got it all. Plus, their wall murals add just the right touch to the atmosphere. Once you're done in Helen, you're free to choose your route back. For a twisty ride, take GA-348 W (about 50 minutes), or for a hillier mountain path, GA-17 N is a bit quicker (around 40 minutes).

- Distance: 151 miles, 3:45 hrs + stops
- Dinner Location: Hofbräuhaus Restaurant

Route: [Coming a few days before the event!](#)

DINNER

We are making plans for group dinner on THURSDAY and SATURDAY, leaving FRIDAY open to you go anywhere you want. Find below some suggestions of restaurants that you can go on FRIDAY (and also on Wednesday or Sunday if you're planning to arrive a day earlier or staying a day later).

Brassies – 0 miles

Don't want to drive to dinner? Have a low-key dinner on-site at Brassies, located in the bottom floor of Brasstown Valley Resort. The best part? No need to drink with moderation!

Brothers at Willow Ranch – 1.6 miles

This dinner will take you on a 5-minute hop from home base to [Brothers at Willow Ranch](#). Brothers has excellent steaks, seafood and burgers, along with several other country fare choices, along with a full-service bar.

The Oaks Lakeside Kitchen – 3.5 miles

A quick 6-minute drive down hwy 76 where you will enjoy a beautiful view of Lake Chatuge and a delicious meal by The Oaks team.

Hiawassee Brew (Brewery & Restaurant)

This 12 minutes' drive with some gorgeous lake views on the way will take you to the [Hiawassee Brew](#), with amazing beer, great atmosphere and a solid selection of food from tacos to burgers.

- Distance: 8.5 miles, 12 min drive

Vincents Coppertop Restaurant and Pub – 11 miles

An easy drive down Hwy 76 will take you to [Vincet's Coppertop Restaurant and Pub](#) in Blairsville.

Murphy's Chophouse – 20 miles

Murphy's Chophouse 130 Valley River Avenue Murphy, NC 28906 Phone: 1-828-835-EATS(3287)

Marina Station – 24 miles

This scenic dinner drive will take you around lake Chatuge to [Marina Station](#) where you will have a nice outdoor dinner experience overlooking the lake.

- Distance: 24 miles, 30 min drive



THE ROADS

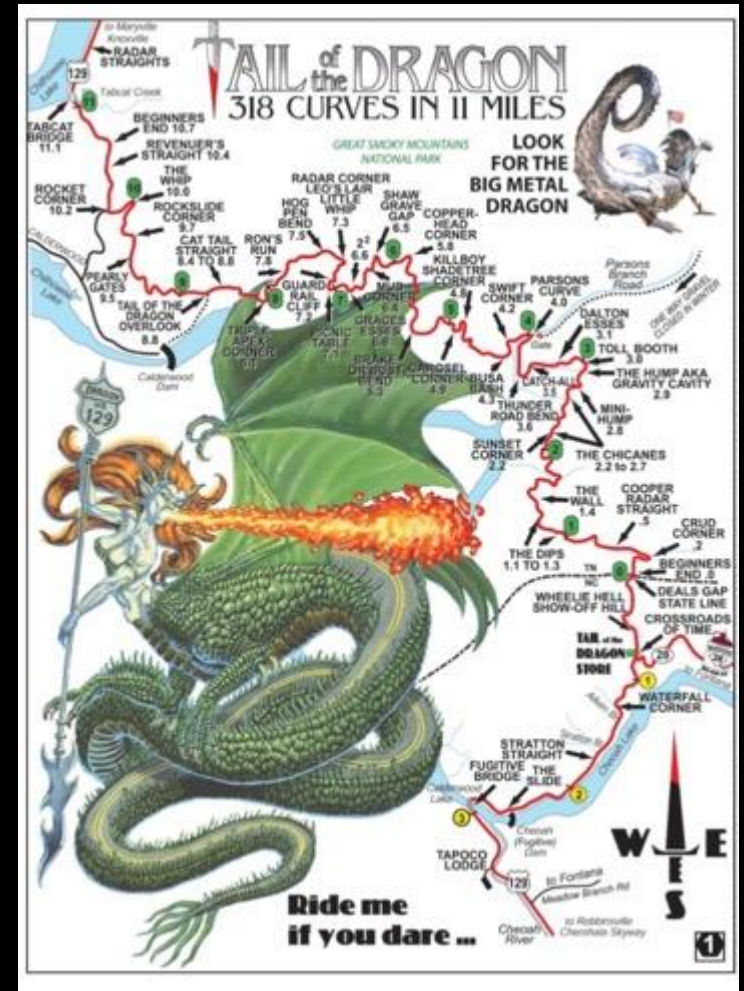
=====

=====

Here are **some** of the roads that we will drive during this event! Come ready for a packed weekend!

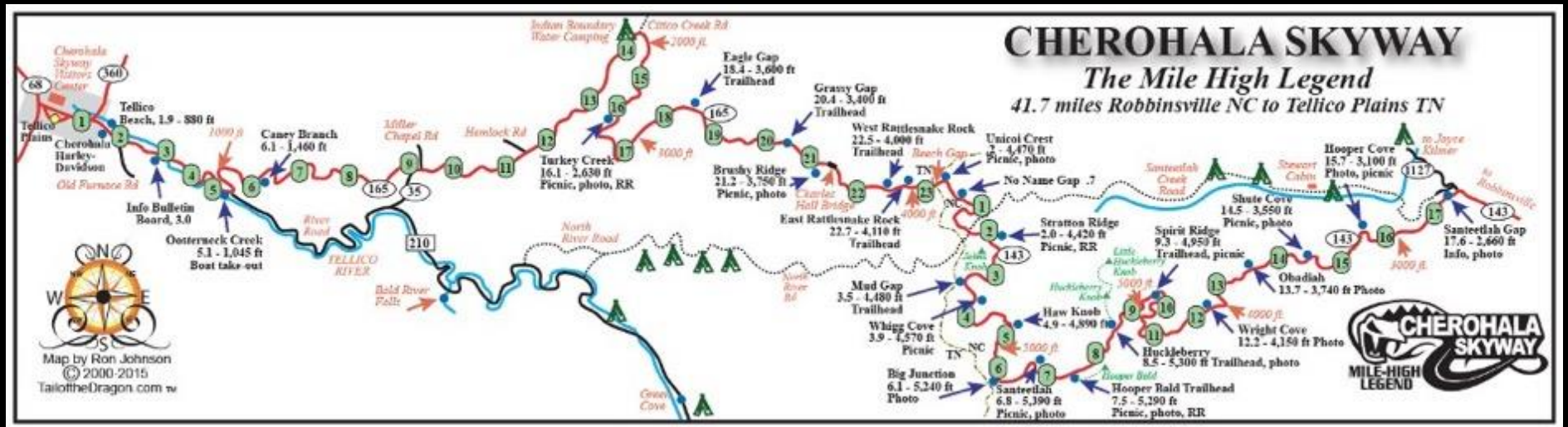
TAIL OF THE DRAGON

The legendary Tail of the Dragon, 318 curves in 11 miles, period. Some of the Dragon's sharpest curves have names like Copperhead Corner, Hog Pen Bend, Wheelie Hell, Shade Tree Corner, Mud Corner, Sunset Corner, Gravity Cavity, Beginner's End, and Brake or Bust Bend. The road earned its name from its curves being said to resemble a dragon. Most of the road lies in Tennessee yet a small section of it crosses into North Carolina. The Tail of the Dragon is one of the best roads to test your skills on. NOT for the weak of heart. Be very careful, and DO NOT push your skill level . . . ride your ride and enjoy the experience.



CHEROHALA SKYWAY

The Cherokee Skyway starts in Tellico Plains, TN and ends in Robbinsville, NC. From the city limits of Tellico Plains to the city limits of Robbinsville is a 41 miles trip of nothing but uninterrupted curves and no intersections. Its sweeping curves will tempt you to ride faster, then you will be in one of the tighter curves with too much speed, so, be careful! The road is in excellent condition and is well maintained. Often referred to as "a drive among the clouds" you will drive to elevations of over 5400 feet high. This truly is one of the best rides in the nation!



HELLBENDER & MOONSHINE 28

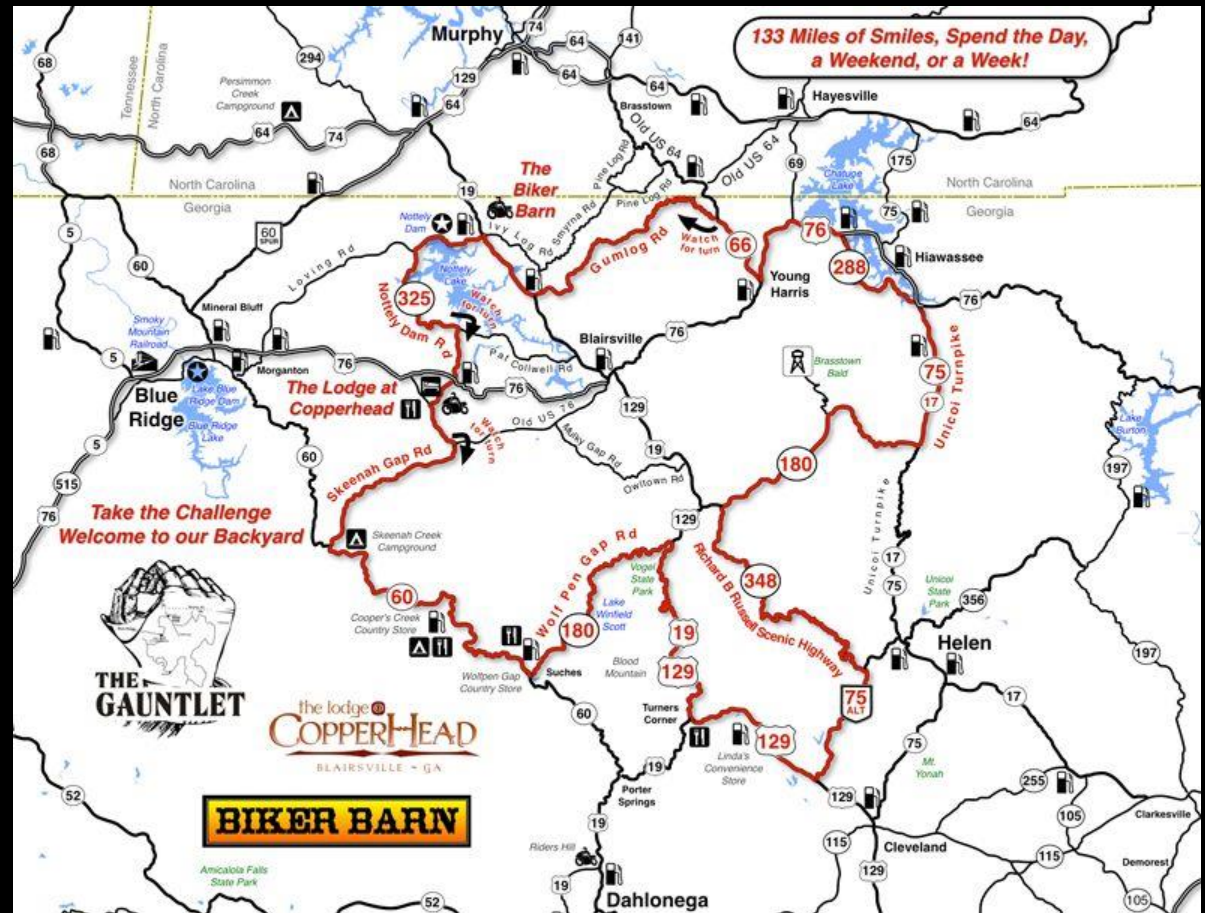
Hellbender is the initial 22 miles of the Moonshiner 28 trail, starting at Deals Gap going towards Fontana Dam. Heading north on the Hellbender 28, you find a completely different road experience with sweeping curves and drop-offs, all lakeside in the Great Smoky Mountains. There are few drives in America that can equal the views as you travel this beautiful byway along Fontana Lake in North Carolina. The road is an intersection at the end of the Tail of the Dragon, and it is, in my opinion, far better than the Dragon and has very little traffic. I have ridden this road several times, and it is one of my favorites in the area.

After the initial 22 miles on NC-28, the Hellbender is over, but Moonshiner 28 is just getting started. The road winds its way southeastward 103 miles through Franklin and Highlands, North Carolina, before turning southward into Georgia and South Carolina and ending at the sleepy town of Walhalla. On this ride, we will ride its portion up to Franklin. The road boasts some great twisties, wide sweepers, and unsurpassed scenery.



THE GAUNTLET

If you're looking for an exhilarating journey through picturesque landscapes, adrenaline-pumping twists and turns, and a sports car-friendly retreat, then look no further than the Gauntlet Trail in North Georgia just outside Blairsville Georgia and Misty Mountain Inn and Cottages. This epic route offers a thrilling drive, combined with the warm hospitality of Misty Mountain Inn and Cottages, a haven for drivers to rest and rejuvenate. Get ready to rev your engines and embark on an unforgettable adventure! The Gauntlet Trail: Located in the heart of North Georgia just outside of Blairsville, is a mecca for sport-cars enthusiasts. Spanning over 133 miles, this legendary route winds its way through the stunning Appalachian Mountains, treating drivers to breathtaking views, challenging curves, and an immersive experience in nature.



WAYAH ROAD

The 30-mile Wayah Road is a hidden gem that connects US 64 near Franklin, NC to US 74 in the heart of Nantahala Gorge near Tipton, NC. This road is your secret passage through the high mountains and national forests, leading straight to the Tail of the Dragon at Deals Gap. While you won't find expansive mountain views here, the route is packed with scenic landscapes along the whitewater river. The road starts with a steep and twisty ascent right from the powerhouse, hugging the riverbank and crossing narrow bridges. It's a quiet path with little traffic, except maybe a few fishermen in the lower stretches. As you reach the climb's peak, Wayah Road unwinds, offering a gentle ride across the mountain tops. You'll pass a quaint community near the lake before the road tightens along the lake's shoreline. Watch out for tight turns and gravel as you navigate the last short climb across Wayah Bald. Need a break? There's a cozy restaurant on the lake, perfect for a quick stop or a photo op. The descent on the east side is thrilling, with hairpin curves leading into a valley that broadens as you near Franklin. Wayah Road concludes at 'Loafer's Glory' – a country store

and gas station known for its charm. You have two options at the end of Wayah Road: head south on Old Murphy Road to reach four-lane US 64 or follow Old Murphy Road about 5 miles into downtown Franklin for some local exploration.



DONATION

OPTIONAL: We are a non-profit 501(c)3 organization and a small PCA Region – we only make a few bucks from our members' membership fee, with 2/3 of it going to PCA National. We don't charge for our events (yet) but we count with your collaboration donating **\$35 (per car)** to support us, the Wilderness Trail Region Porsche Club of America. This donation is entirely optional and if you choose to donate, there will be an option to throw some more bucks to the donation if you feel super generous* (**Add a donation for Wilderness Trail Region PCA**). Your support helps us to continue organizing events like this one and welcoming PCA members from any of the 146 PCA regions across North America.

To donate, follow this link: <https://www.zeffy.com/en-US/ticketing/e5d892fb-78bc-4135-ad6f-acfc31323f57>

A tax receipt will be given to you at the end of your transaction.

PS.: During the check-out, there will be a field saying: **"Add a contribution to keep the platform we use 100% free!"** – feel free to drop the suggested amount to \$0 (this extra contribution does not go to our organization. This is a donation to the payment platform Zeffy)

* Everyone who toss some extra bucks will receive an event's poster for free!

MERCHANDISE

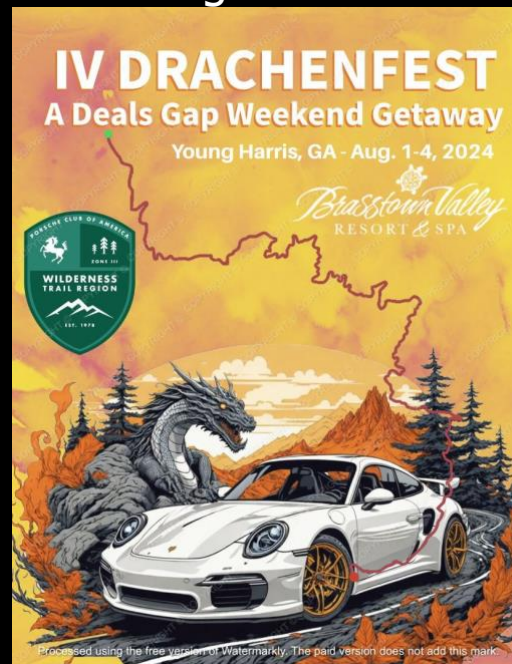
One more way to help our club is ordering our exclusive Porsche Club merchandise! We have Event Poster, T-Shirts, Keychains, YETI drinkware and more!

Link to order: <https://www.zeffy.com/en-US/ticketing/dfa0287c-e086-4bef-87eb-fe90c39056ab>

PS.: During the check-out, there will be a field saying: "Add a contribution to keep the platform we use 100% free!" – feel free to drop the suggested amount to \$0 (this extra contribution does not go to our organization. This is a donation to the payment platform Zeffy)

11x17 Event Poster (\$15)

Order using the link above!



WINERIES & RESTAURANTS

Crane Creek Vineyards

Address: 1040 Crane Creek Rd, Young Harris, GA

Distance: 6 miles

Website: <http://www.cranecreekvineyards.com/>

Hours:

Tuesday-Thursday 11:00 am to 6:00 pm

Friday & Saturday 11:00 am to 8:00 pm

Sunday 1:00 pm to 5:00 pm

Hightower Creek Vineyards

Address: 7150 Canaan Dr, Hiawassee, GA

Distance: 16 miles

Website: <https://hightowercreekvineyards.com/>

Hours:

Thursday 12:00pm - 5:00pm

Friday 12:00pm - 5:00pm

Saturday 12:00pm - 5:00pm

Sunday 12:30pm - 5:00pm

Eagle Fork Vineyards

Address: 08 Cedar Cliff Road, Hayesville, NC

Distance: 16 miles

Website: <http://www.eagleforkvineyard.com/>

Hours:

Tuesday – Sunday: 12:00pm – 07:00pm

Paradise Hills, Winery Resort & Spa

Address: 366 Paradise Rd, Blairsville, GA

Distance: 13 miles

Website:

<https://www.paradisehillsga.com/Winery/>

Hours:

Sun - Wed, 1-5 p.m. (last tasting at 4:30)

Thurs - Sat, 12 - 6 p.m. (last tasting at 5:30)

May – Nov: Live music on Saturdays afternoon
and extended hours to 8 p.m.

SOCIAL MEDIA

Mark 'Going' on our Facebook* event after you RSVP on our website:

<https://www.facebook.com/events/783593730455578/>

* You must RSVP on WTRPCA.ORG/EVENTS/ or via direct link wtrpca.org/events/drachenfestiv to be part of this event. Responding 'Going' on Facebook does not place you in the event attendees list.

'Like' and 'Follow' us on Social Media:

Facebook Page: <https://www.facebook.com/WTRPCA.ORG>

Instagram: https://www.instagram.com/wilderness_trail_porsche_club/

CALENDAR

Add this event to your calendar (): <https://calndr.link/event/xWYyoi61vO>

Or use one of the links below:

[Apple](#) • [Google](#) • [Office 365](#) • [Outlook Web](#) • [Outlook](#) • [Yahoo](#)

CLUB SPONSORS



Club member owned



Club member owned



Club member managed
non-profit org

Support our sponsors!

QUESTIONS? IDEAS?

We would love to hear from you!

Contact:
pcawtr@gmail.com

