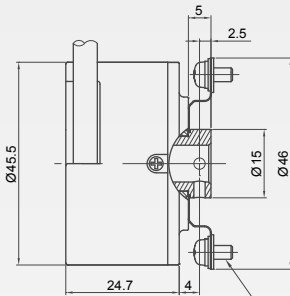
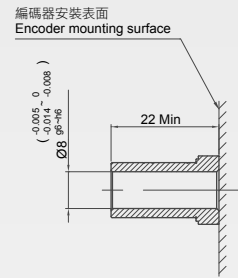
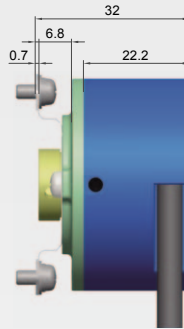
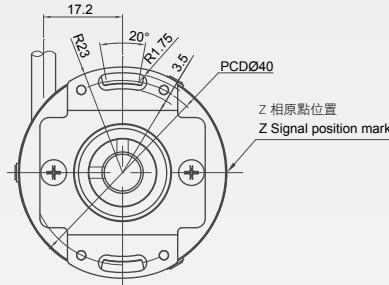


45H Incremental Encoder

www.etekcs.com.tw
專注創新 | 關鍵核心

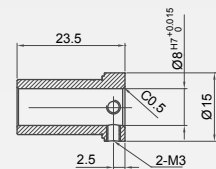


Recommended screw
Hexagonal socket head cap screw M3
PCDØ40
2-M3螺絲



Installation detail
安裝詳圖

Recommended dimensions on shaft
電機軸建議尺寸



Shaft details
軸詳細尺寸

指定外公差 ±0.5mm
Tolerance is ±0.5mm unless specified.

45H	分解能 Resolution	出力相 Output phase	出力型態 Output form	電源電壓 Voltage
應用選配	50,100,200,250,300,360,400,500	2 : AB Phase	C : NPN Open collector	10.8 ~ 26.4VDC
	600,720,800,900,1000,1024,1200	3 : ABZ Low	P : Push pull	10.8 ~ 26.4VDC
	1800,2000,2048,2500	4 : AB+Z High	L : Line driver	4.75 ~ 5.25VDC

電氣規格 Electrical Specifications

型號 Model	集電極開路型 Open collector	推拉型 Push pull	線驅動型 Line driver			
容許波紋 Allowable ripple	≤ 3% rms	3% rms max.	≤ 3% rms	3% rms max.	-	-
消耗電流 Current consumption	≤ 50mA	50mA max.	≤ 50mA	50mA max.	≤ 50mA	50mA max.
信號形式 Signal waveform	兩相+原點 Two-phase + home position	兩相+原點 Two-phase + home position	兩相+原點 Two-phase + home position	兩相+原點 Two-phase + home position	兩相+原點 Two-phase + home position	兩相+原點 Two-phase + home position
最高響應頻率 Maximum response frequency	200kHz	200kHz	200kHz	200kHz	200kHz	200kHz
占空比 Duty ratio	50 ± 25%	50 ± 25%	50 ± 25%	50 ± 25%	50 ± 25%	50 ± 25%
相位差寬度 Phase difference width	25 ± 12.5%	25 ± 12.5%	25 ± 12.5%	25 ± 12.5%	25 ± 12.5%	25 ± 12.5%
原點信號寬度 Signal width at home position	100 ± 50%	100 ± 50%	100 ± 50%	100 ± 50%	100 ± 50%	100 ± 50%
輸出 Output	上升/下降時間 Rise/Fall time	≤ 1µs (電纜長度為1m) 1 µs max.(when cable length is 1 m)	≤ 1µs (電纜長度為1m) 1 µs max.(when cable length is 1 m)	-	-	
	輸出類型 Output type	NPN集電極開路輸出 NPN open collector output	推拉型 Push pull	線驅動輸出 Line-driver	Line-driver	
	原點輸出邏輯 Output logic	負邏輯 (低電平有效) Negative logic (active low)	正邏輯 (高電平有效) Positive logic (active high)	正邏輯 (高電平有效) Positive logic (active high)	正邏輯 (高電平有效) Positive logic (active high)	
	輸出電流 Output current	"H"	-	≤ 10mA	10 mA max.	-
		"L"	-	≤ 30mA	30 mA max.	-
	輸出電壓 Output voltage	"H"	-	≤ [(電源電壓)-2.5V] [(Load power voltage)-2.5V] min.	≤ [(電源電壓)-2.5V] [(Load power voltage)-2.5V] min.	≤ [(電源電壓)-2.5V] [(Load power voltage)-2.5V] min.
		"L"	≤ 0.4V	0.4 V max.	≤ 0.6V	0.6V max.
流入電流 Inflow current	≤ 30mA	30 mA max.	-	-	-	
負載電源電壓 Load power voltage	≤ DC30V	30 VDC max.	≤ DC30V	30 VDC max.	-	-

機械規格 Mechanical Specifications

軸慣性力矩 Moment of inertia	65 g·cm ² max.	
摩擦力矩 Friction torque	100 g·cm max.	
最大迴轉速度 Maximum allowable speed (Note1)	6000 rpm max.	
入力軸轉動位置 Shaft Loading	半徑方向 Radial	0.05 mm TIR max.
	軸方向 Axial	0.2 mm max.
	軸角度 Angle	0.1 ° max.
轉動加速度 Angular acceleration	10 ⁴ rad/sec ²	
重量 Net weight	約120g 120 g max.	

環境條件 Environmental Requirements

使用環境溫度 Operating temperature	-20 ~ +85°C
保存環境溫度 Storage temperature	-25 ~ +85°C
使用環境濕度 Operating humidity	≤ 95% RH (無凝露) RH 95% max. No condensation
耐震動(耐久) Vibration resistance	變位振幅 1.5mm, 5 ~ 55Hz, 1.5 mm. 5 ~ 55Hz
	5G. 50 ~ 200Hz三方向各2hr 5G. 50 ~ 200Hz
耐沖擊(耐久) Shock resistance	100G. 11msec 六方向各三回 100G. 11msec
防護構造 Protection	防塵型 : IP50 Simple dust protection : IP50