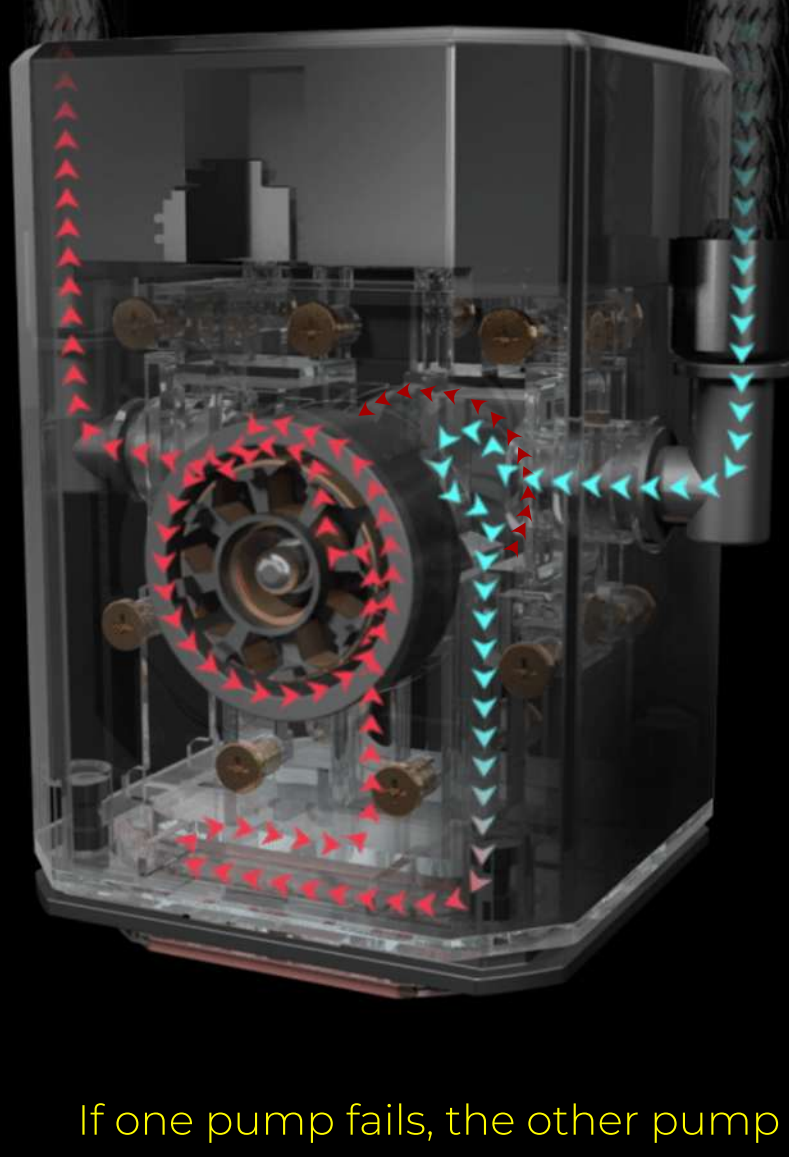




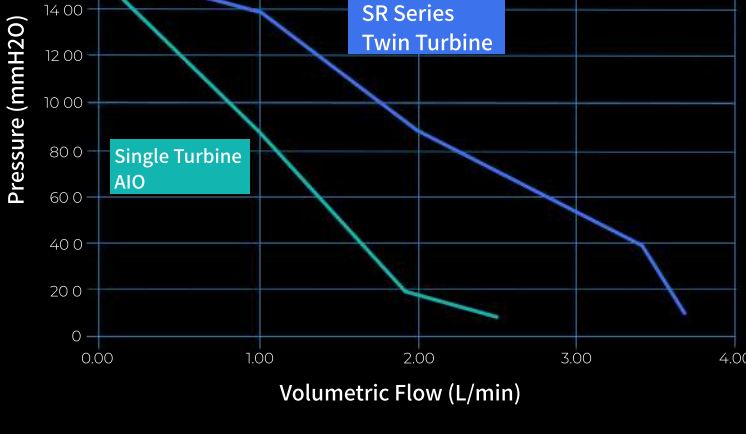
SR36

TWIN TURBINES LIQUID CPU COOLER



Patented Integrated Twin Turbines

The patented twin-turbine function runs parallel with one another and functions simultaneously to push both currents toward the copper cold-plate to significantly reduce the temperature and keep hardware cool.

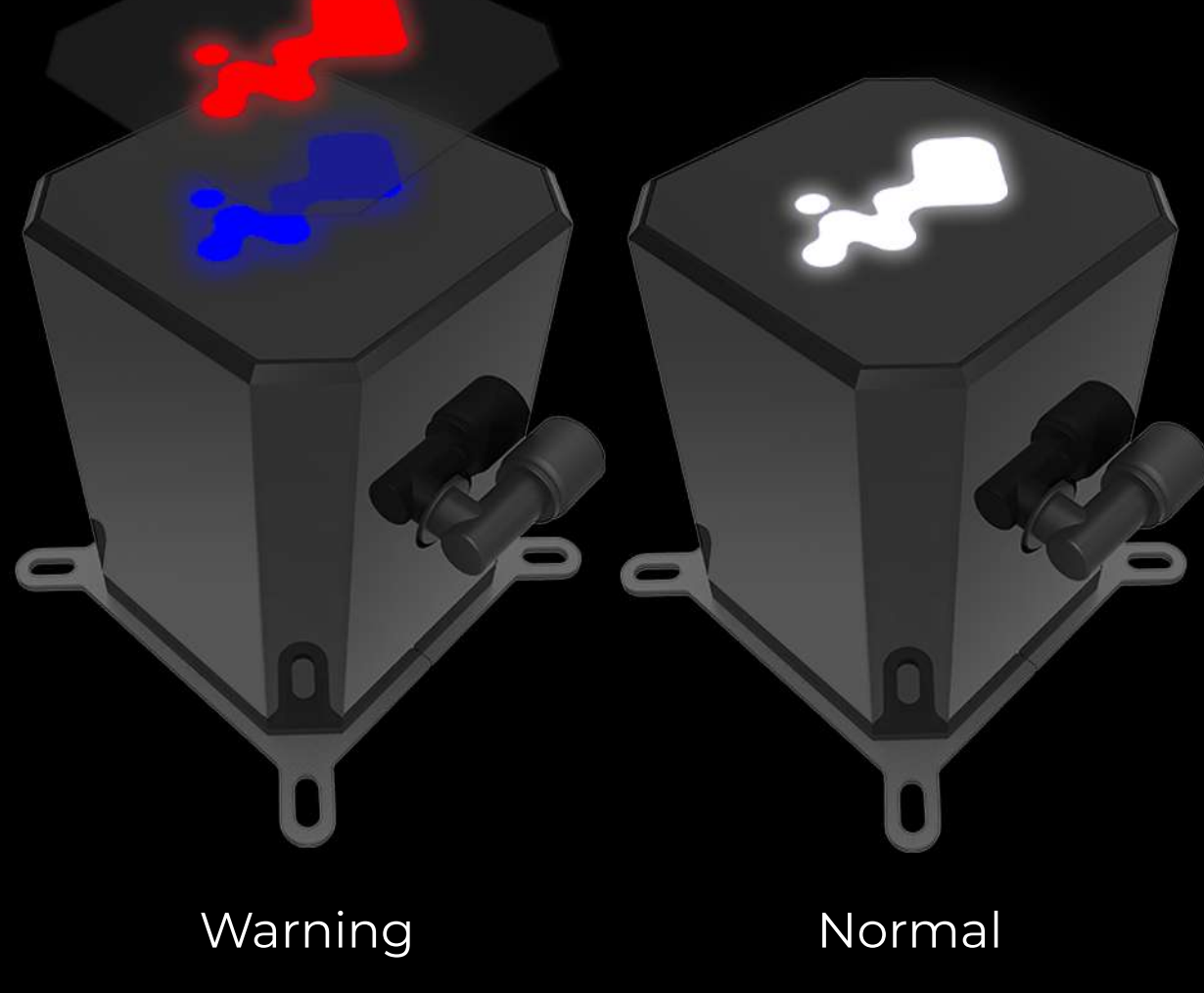


If one pump fails, the other pump will still function while a cautionary LED will warn users



Cautionary LEDs

The pump illuminates a white LED logo under normal circumstances. If it detects an unusual current or excessive heat, the LEDs will flash red and blue to prevent damaging components.



Warning

Normal



Radiator Fans that Flow!

The Jupiter series AJF120 case fans are specially designed for liquid-cooling. The fans feature high airflow (101.5 CFM), high static pressure (4.22mm-H2O) and possesses a high-speed mode that ramp up the RPMs to 2500.

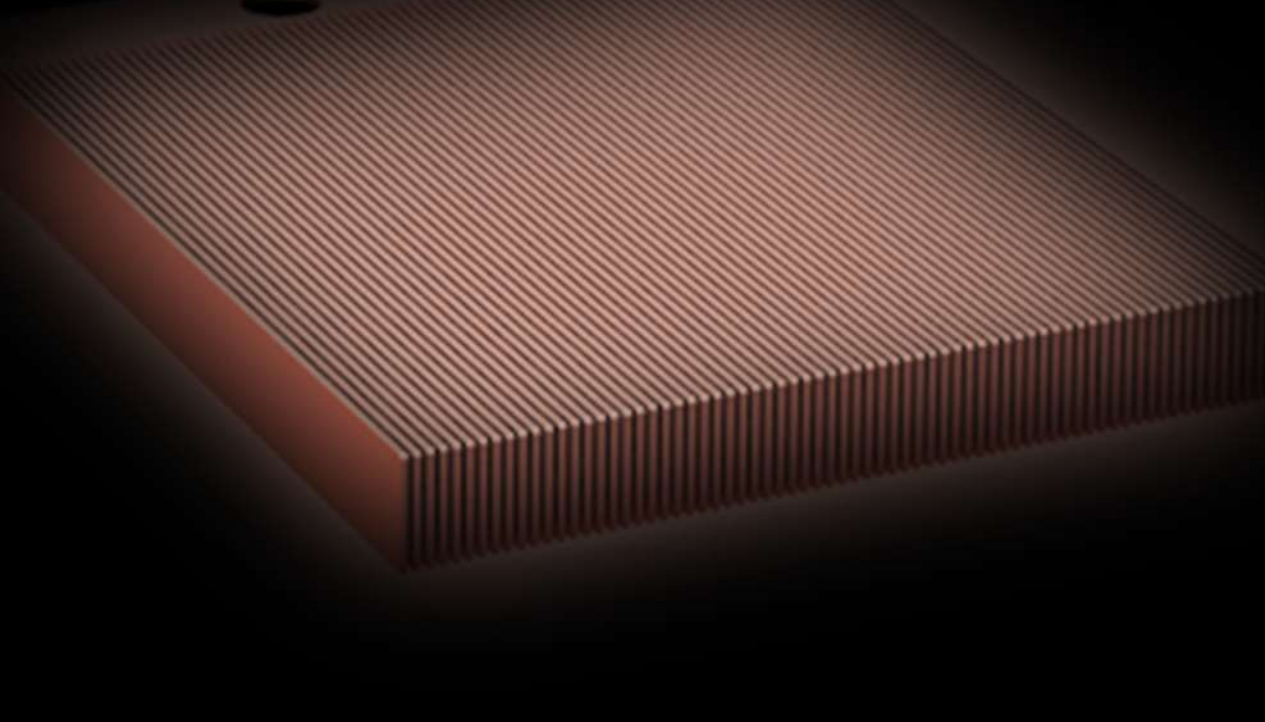
Approach to Noise Reduction

The noise of an All-In-One liquid cooling radiator is difficult to control. The main reason is because of the way the high airflow sounds when it runs through the traditional radiator fins. To combat this, the SR series feature the AJF120 fans to provide the best operation performance, while reducing noise pollution.



Array of Microchannel Fins

The SR series possesses a high waterflow pump, which enhances cooling performance directly on the copper plate to cool the CPU. The copper plate hosts an array of microchannel fins that dissipates heat.

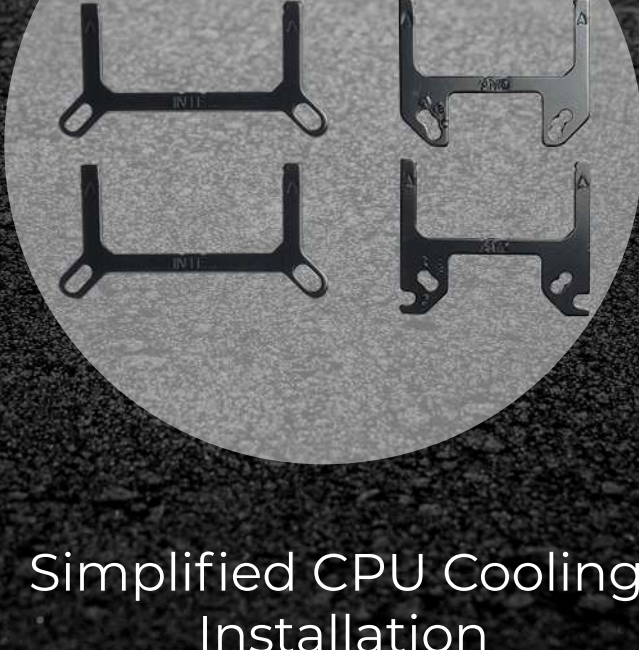


Syncs with Addressable Motherboards

There are about 16.8 million ARGB color possibilities, which means the AJF120 case fans allow the customization to meet your build's standards. Users can choose to control lighting independently by using the One-Click controller included or to sync with an addressable motherboard (3-pin, 5V).



Corrosive Resistant Tubes



Simplified CPU Cooling Installation



Anti-loose Cable Buckle

Specifications

Model	SR36	
Model Number	IW-LC-SR36	
CPU Socket Support	Intel® LGA 2066/2011-V3/2011/366/156/155/151/150/1200 AMD® AM4/AM3+/AM3/AM2+/AM2/FM2+/FM2/FM1/TR4	
Radiator	Dimensions	397 x 120 x 27 mm (15.6 x 4.7 x 1.1")
	Material	Aluminium
	Tube Length	400 mm
Water Block & Pump	Tube Material	Rubber with Nylon Braided Sleeve
	Dimensions	68 x 68 x 100 mm
	Materials	Copper, Plastic
Fan	Pump Speed	2400±10%RPM
	Model	Jupiter Series AJF120
	Quantity Included	3 PCS
	Dimensions	120 x 120 x 26 mm
	Speed Mode (PWM)	PWM 500-2500 RPM +/- 10%
	Noise Level	23 dBA (normal)
	Airflow	101.5 CFM (max)
	Static Pressure	4.22 mm-H2O
	Connectors	4-pin (12V, PWM), 3-pin (5V, ARGB)
	Bearing Type	Double Ball Bearing
Package Contents	InWin SR series 360mm CPU Liquid Cooler *1	
	InWin AJF120 Addressable Fan *3	
	ARGB One-Click Controller	
	Fan and Radiator Mounting Screws Pack	
	Mounting Kit for CPU Sockets	
Package Dimensions (H x W x D)	142 x 244 x 459 mm (5.6" x 9.6" x 18")	
Net Weight	1.8kg/ 3.9lbs	
Gross Weight	2.5kg/ 5.5lbs	
Warranty	5 Years	

