

# ET600

80Plus GOLD 600W Modular cable ATX switching power supply



Power density  
282W per liter







## 600W

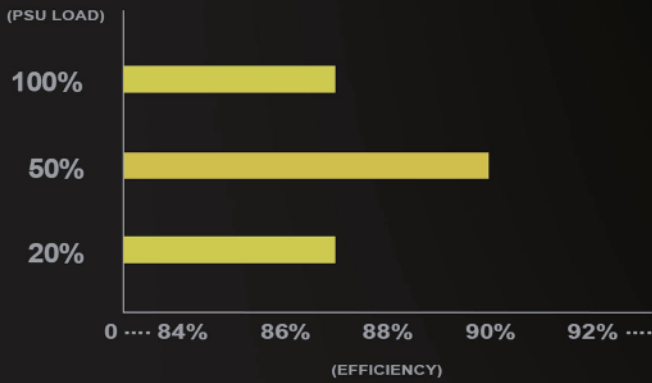


- High efficiency with 80 PLUS Gold certification
- 24/7 continuous power output with 40°C operating temperature
- Class-leading single +12V rail
- Silent running 135mm fan with 18 dBA
- PCI-E 8pin and PCI-E 6pin connectors support
- Advanced fully cable management
- All-black flat cables design
- Multiple protection circuitry

## Specifications

Model No.	SST-ET600-MG
Color	Black (lead-free paint)
Cooling System	Single 135 mm silent fan
Noise Level	18 dBA minimum
MTBF	100,000 hours
Operating temperature	0 ~ 40°C
Dimension	150 mm (W) × 86 mm (H) × 165 mm (D)

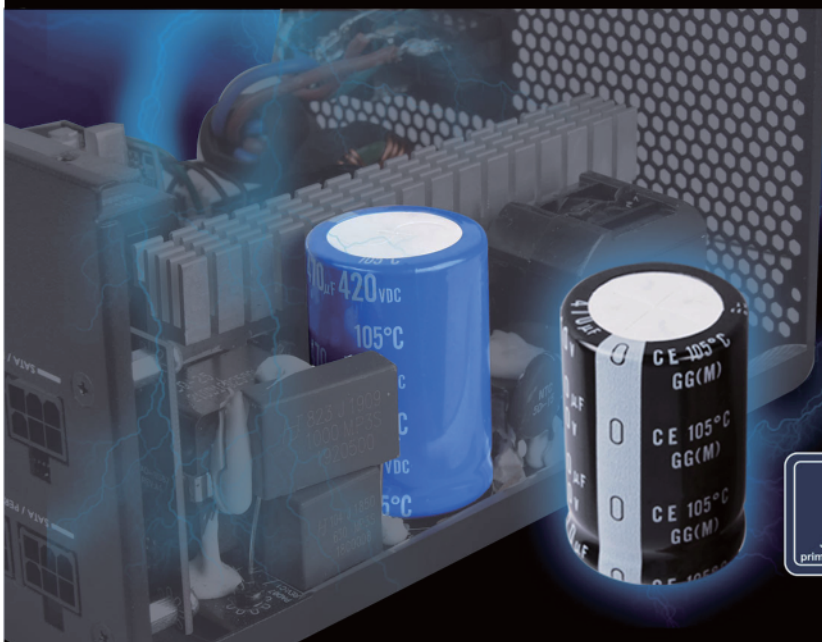
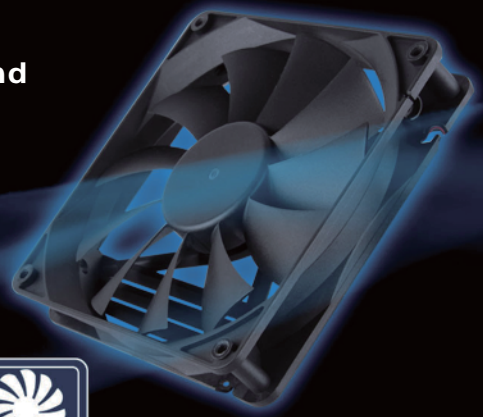
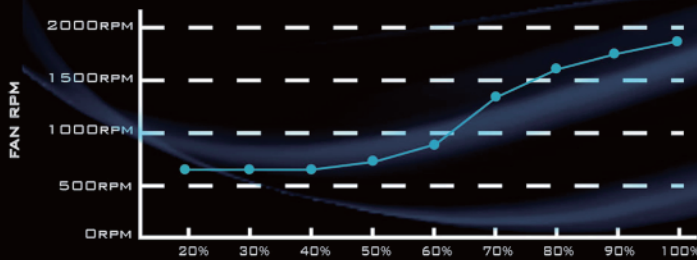
Photo	Type	Connector quantity per cable	Cable quantity	Length
	MB 24 connector	1	1	600mm
	CPU 4+4P connector	1	1	150mm
	CPU 8P connector	1	1	750mm
	PCI-E 6+2P connector	2	1	700mm 150mm
	SATA connector	4	2	600mm 150mm 150mm 150mm
	Peripheral 4P connector	3	1	600mm 150mm 150mm



Power density  
282W per liter

Designed for 80 PLUS Gold level of efficiency to reduce wasted heat and save on electricity

Built-in 135mm fan with excellent airflow and low noise, perfect for home or office use.



Japanese primary capacitor  
Ensure reliable power and long-life span

