



KØL  
HIGH-DENSITY  
FIBRE CEMENT

KØL

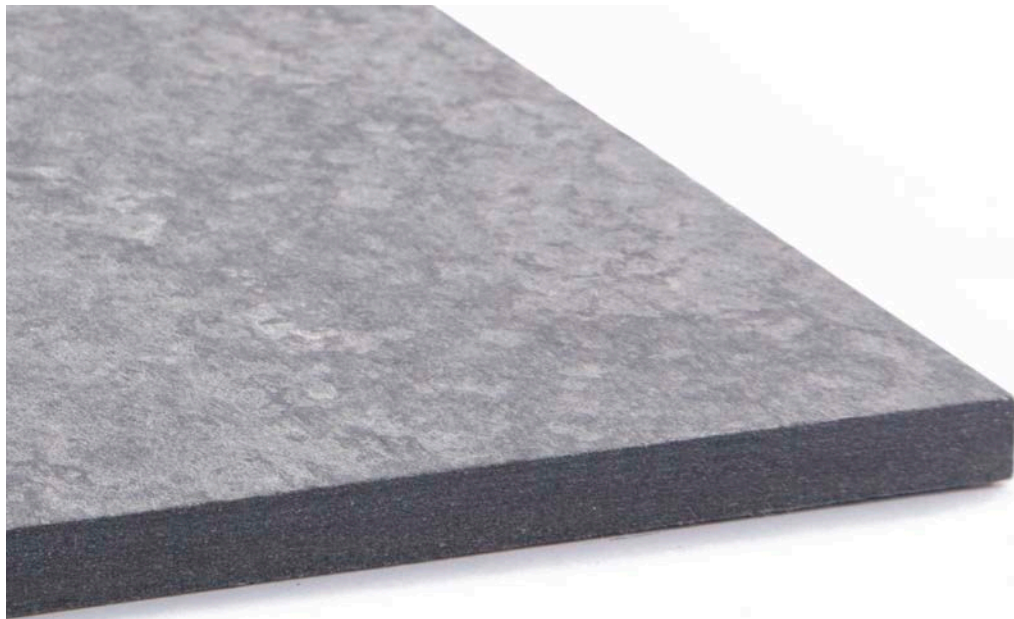
Through coloured high-density  
fibre cement façade panels



## UNIQUE

The characteristics of the raw materials and pigments allow for subtle natural variations in tonality and texture.



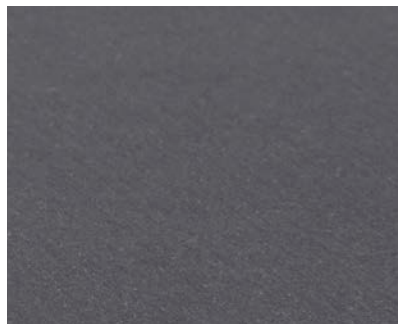


## FIRE RESISTANCE

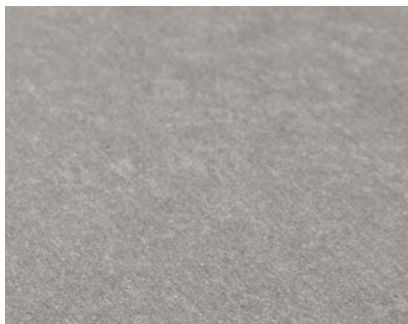
KØL panels are non-combustible  
according to CAN/ULC S114-05 and  
ASTM E136

DURABLE. SUSTAINABLE. ENERGY EFFICIENT.  
LASTING.

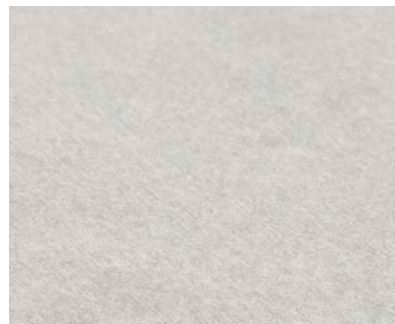




SLATE 7015

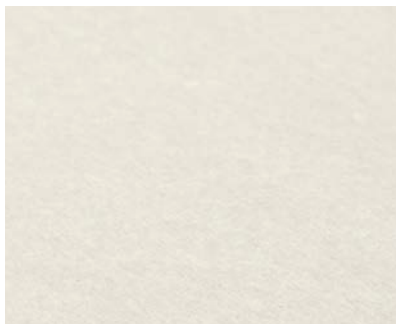


ZINC 7037

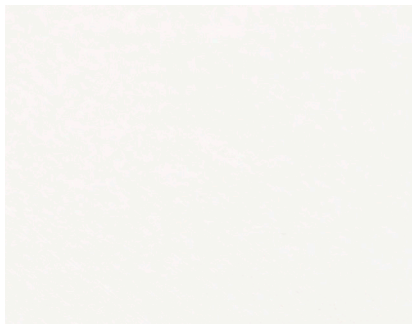


TELEGREY 7038

UNIQUE. NATURAL. EXPRESSIVE.



NATURAL 9002



PURE WHITE 9010

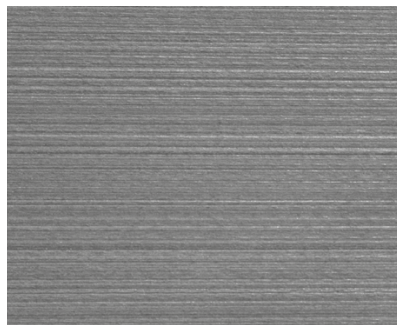


DESERT 1019

## DESIGN FLEXIBILITY

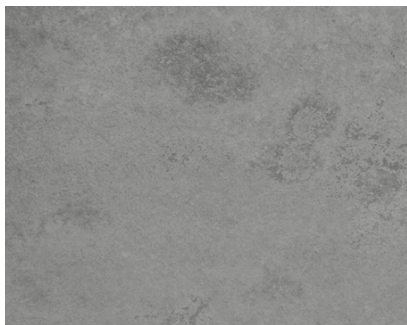
KØL is offered in 1250mm x 2500mm (49.21" x 98.42") and 1250mm x 3050mm (49.21" x 120.07") panel sizes which can be fabricated on the construction site with standard hand tools or in a shop with CNC equipment.

GROOVE



9010 9002 7038 7037 7015

BLAST



9002 7038 7037

RIGO



9002 7038 7037

## TEXTURES

KØL is available in Groove,  
Blast and Rigo surface finish.



SLATE 7015





L ZINC 7037

TELEGREY 7038





NATURAL 9002



PURE WHITE 9010





DESERT 1019

# TECHNICAL DATA

Characteristics	KØL High Density Fibre Cement
Density (dry)	$\geq 1.6 \text{ kg/dm}^3$
Max water absorption* – untreated sheets	$\leq 25\%$
Max water absorption* – hydrophobic sheets	$\leq 9\%$
Max water absorption* – UV treated sheets	$\leq 3\%$
Natural humidity	$10 \div 15\%$
Movement in extreme weather conditions/temperature & moisture conditions -5°C + 100°C; 20 + 90%	1.5 mm/m
Thermal conductivity	0.36 W/mK
Thermal expansion coefficient	$0.00001 \text{ } ^\circ\text{C}^{-1}$
Fire rating	CAN/ULC S114-05 ASTM E136 ASTM E84 - CLASS A
Freeze resistance	optimum
Oils, acids, bases, salts resistance	good
Waterproof - inalterability	absolute
Wear resistance	good
Durability classification (EN 12467:2012)	category A
Strength classification (EN 12467:2012) (wet) untreated sheets	class 4 $\geq 18 \text{ N/mm}^2$
Strength classification (EN 12467:2012) (wet) hydrophobic-UV treated sheets	class 5 $\geq 24 \text{ N/mm}^2$
Bending strength (dry) - perpendicular rupture to fibres	$32 \text{ N/mm}^2$
Bending strength (dry) - parallel rupture to fibres	$22 \text{ N/mm}^2$
Standard sizes	1250mm x 2500mm (49.21' x 98.42') 1250mm x 3050mm (49.21' x 120.07')
Tolerances on nominal dimensions	Level 1 $\pm 2 \text{ mm}$ length $\pm 1 \text{ mm}$ width
Tolerances on straightness of edges	Level 1 0.1%
Tolerances on squareness of edges	Level 1 2mm/m
Tolerances on thickness for smooth sheets	$\pm 0.2 \text{ mm}$
Compression resistance	$40 \text{ N/mm}^2$
Resilience	$2 \text{ N/mm}^2$
E modulus of elasticity (dry)	$13.000 \text{ N/mm}^2$
Superior caloric power	0.14 MJ/kg
Vapour resistance factor	45
CE marked product	EN 12467:2012
* wet over dry	

The current document replaces any previous version. KØL reserves the right to change, delete or update any content of this document at any time and without prior notice.



[info@kolfacade.com](mailto:info@kolfacade.com)

[kolfacade.com](http://kolfacade.com)