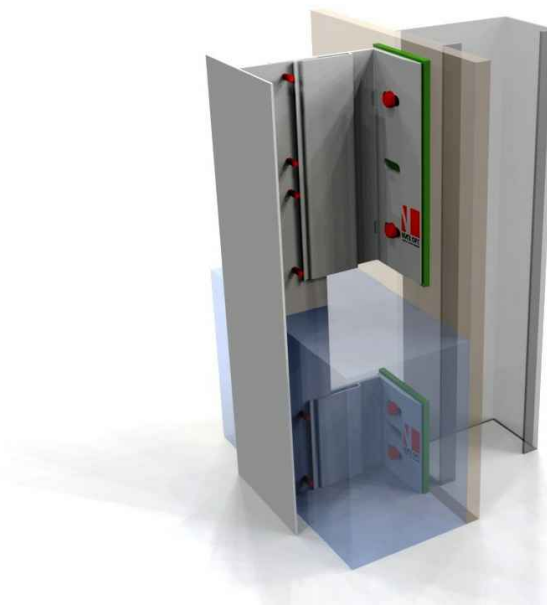


- S01. Nvelope Complete Brackets
- S02. Nvelope Complete Standard "T" & "L" Rails
- 01A. Wall Assembly - Flat Panel at Steel Stud Framing
- 01B. Wall Assembly - Flat Panel System at Structural Concrete
- 01C. Wall Assembly - Flat Panel System at Structural CMU
- 02. Window Jamb at EF Flat Panel System
- 03. Outside Corner at EF Flat Panel System
- 04. Inside Corner at EF Flat Panel System
- 05. Base Detail at EF Flat Panel System
- 06. Window Sill at EF Flat Panel System
- 07. Window Head at EF Flat Panel System
- 08. Wall Section at EF Flat Panel System
- 09. Parapet Detail at EF Flat Panel System



NVELOPE NV1-EF is a vertical support system for use with Exposed Fastener flat panels such as fibre cement, UHPC, Phenolic aluminum plate, corrugated or perforated metal. Available in mill finish, Duranar/Kynar Fluoropolymer or Class 1 Anodized finishes.

PROJECT SPECIFIC ENGINEERING IS REQUIRED TO ADDRESS WIND LOAD, CLADDING WEIGHT/TYPE, PROJECTION, SPACING, ETC). CONTACT NVELOPE FOR ADDITIONAL INFO. GUIDE DETAILS BY NVELOPE ARE PROVIDED FOR GENERAL REFERENCE ONLY AND REPRESENT TYPICAL CONDITIONS FOR OUR CLADDING ATTACHMENT SYSTEMS. ALL IMPLIED WARRANTIES INCLUDING APPROPRIATENESS FOR A SPECIFIC PURPOSE ARE EXPLICITLY EXCLUDED.

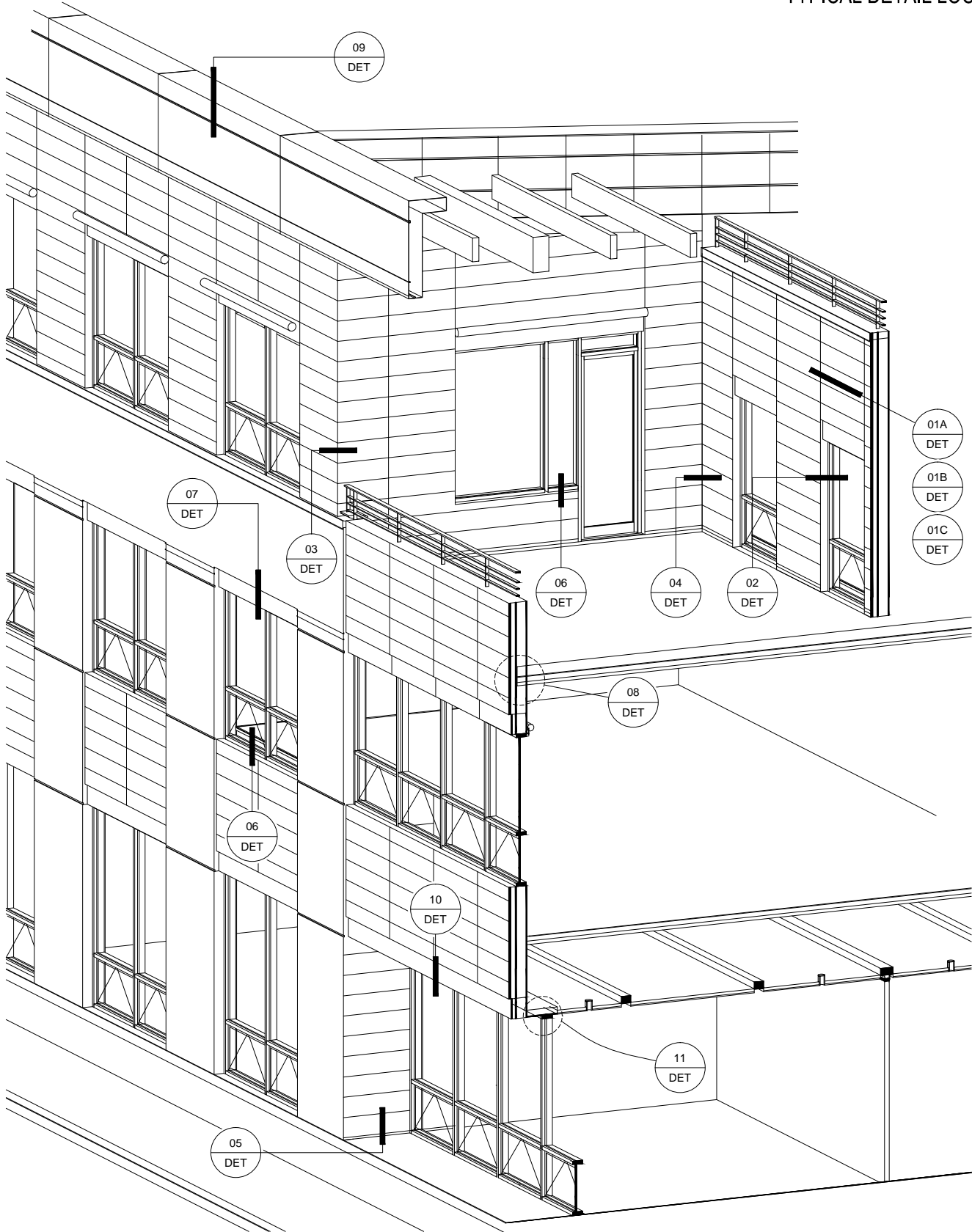
System:
NVELOPE USA, LLC.
Flat Panel

NvelopeUSA, LLC.
1546 NW 56th Street,
Seattle WA 98107
T: 1 (877) 491-3100
info@nvelopeusa.com
www.nvelopeusa.com



NO.	DESCRIPTION	DATE	INIT.
1	Client Review	03/24/16	rps
2	Client Updates	03/29/16	rps
3	Client Updates	04/06/16	rps
4	Client Review	05/09/16	rps

info@NvelopeUSA.com	
http://www.nvelope.us	
Sheet Title: DET	System ID: NV1-EF
Scale:	Sheet: INDEX 1



TYPICAL ISOMETRIC ELEVATION/SECTION

PROJECT SPECIFIC ENGINEERING IS REQUIRED TO ADDRESS WIND LOAD, CLADDING WEIGHT/TYPE, PROJECTION, SPACING, ETC). CONTACT NVELOPE FOR ADDITIONAL INFO. GUIDE DETAILS BY NVELOPE ARE PROVIDED FOR GENERAL REFERENCE ONLY AND REPRESENT TYPICAL CONDITIONS FOR OUR CLADDING ATTACHMENT SYSTEMS. ALL IMPLIED WARRANTIES INCLUDING APPROPRIATENESS FOR A SPECIFIC PURPOSE ARE EXPLICITLY EXCLUDED.

System:
NVELOPE USA, LLC.
 Flat Panel

NvelopeUSA, LLC.
 1546 NW 56th Street,
 Seattle WA 98107
 T: 1 (877) 491-3100
info@nvelopeusa.com
www.nvelopeusa.com



NO.	DESCRIPTION	DATE	INIT.
1	Client Review	03/24/16	rps
2	Client Updates	03/29/16	rps
3	Client Updates	04/06/16	rps
4	Client Review	05/09/16	rps

info@NvelopeUSA.com
<http://www.nvelope.us>

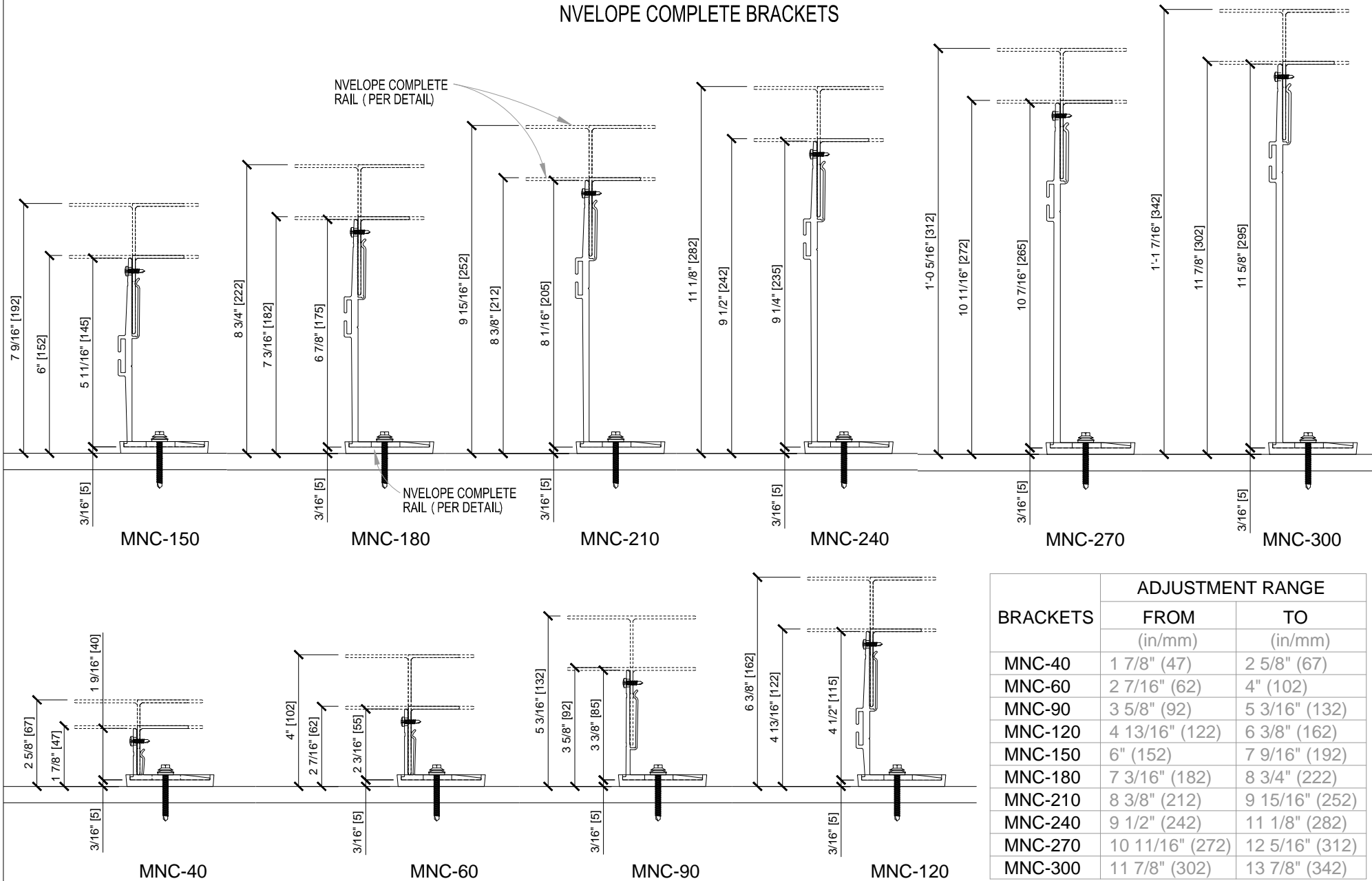
Sheet Title:
DET

Scale:
3" = 1'-0"

System ID:
NV1-EF

Sheet:
KEY

NVELOPE COMPLETE BRACKETS



PROJECT SPECIFIC ENGINEERING IS REQUIRED TO ADDRESS WIND LOAD, CLADDING WEIGHT/TYPE, PROJECTION, SPACING, ETC). CONTACT NVELOPE FOR ADDITIONAL INFO. GUIDE DETAILS BY NVELOPE ARE PROVIDED FOR GENERAL REFERENCE ONLY AND REPRESENT TYPICAL CONDITIONS FOR OUR CLADDING ATTACHMENT SYSTEMS. ALL IMPLIED WARRANTIES INCLUDING APPROPRIATENESS FOR A SPECIFIC PURPOSE ARE EXPLICITLY EXCLUDED.

System:
NVELOPE USA, LLC.
Flat Panel

NvelopeUSA, LLC.
1546 NW 56th Street,
Seattle WA 98107
T: 1 (877) 491-3100
info@nvelopeusa.com
www.nvelopeusa.com



NO.	DESCRIPTION	DATE	INIT.
1	Client Review	03/24/16	rps
2	Client Updates	03/29/16	rps
3	Client Updates	04/06/16	rps
4	Client Review	05/09/16	rps

info@NvelopeUSA.com
http://www.nvelope.us

Sheet Title:
DET

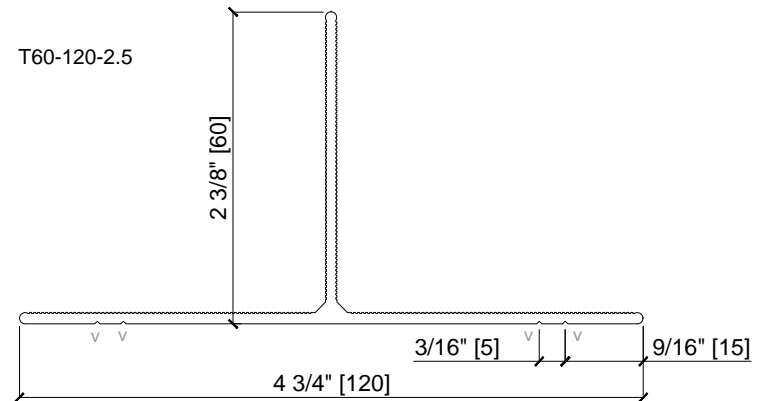
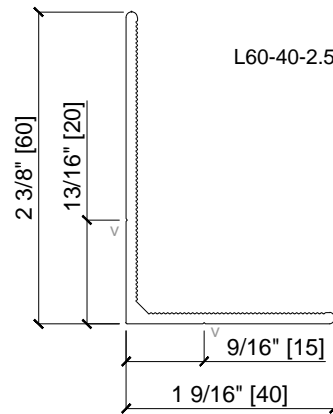
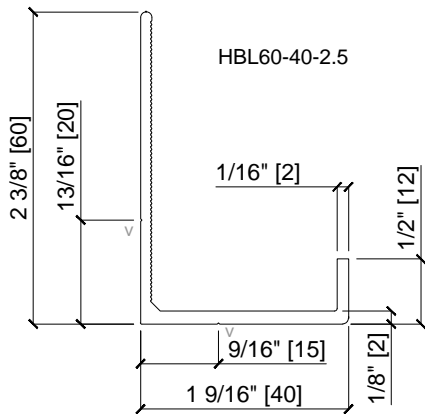
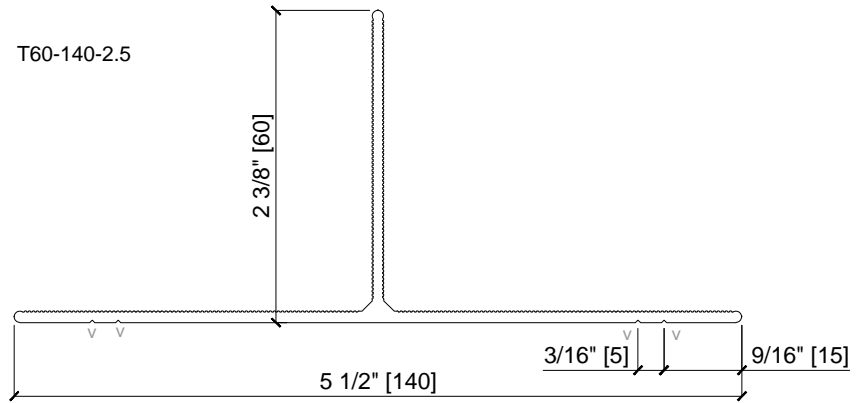
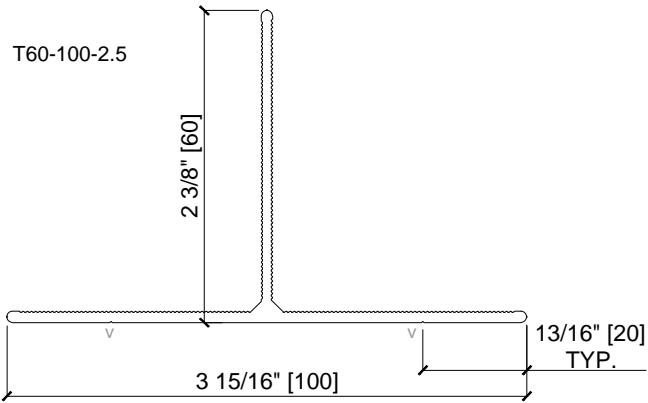
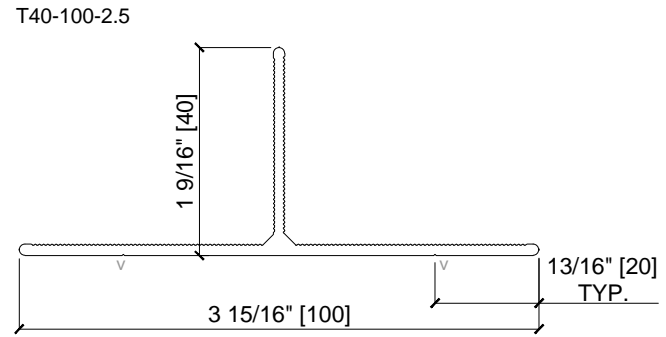
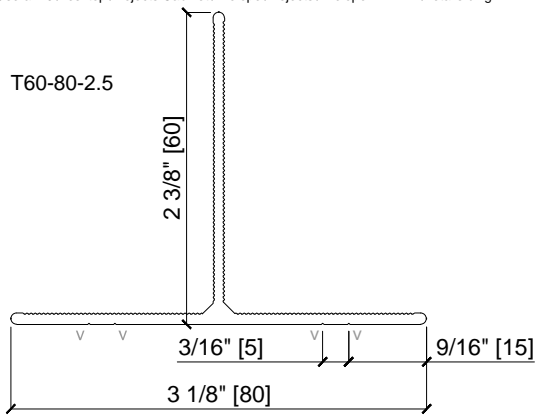
System ID:
NV1-EF

Scale:
NTS

Sheet:
S01



NVELOPE COMPLETE STANDARD "T" & "L" RAILS
 v = 0.25 x 90° VEE GROOVE



PROJECT SPECIFIC ENGINEERING IS REQUIRED TO ADDRESS WIND LOAD, CLADDING WEIGHT/TYPE, PROJECTION, SPACING, ETC). CONTACT NVELOPE FOR ADDITIONAL INFO. GUIDE DETAILS BY NVELOPE ARE PROVIDED FOR GENERAL REFERENCE ONLY AND REPRESENT TYPICAL CONDITIONS FOR OUR CLADDING ATTACHMENT SYSTEMS. ALL IMPLIED WARRANTIES INCLUDING APPROPRIATENESS FOR A SPECIFIC PURPOSE ARE EXPLICITLY EXCLUDED.

System:
NVELOPE USA, LLC.
 Flat Panel

NvelopeUSA, LLC.
 1546 NW 56th Street,
 Seattle WA 98107
 T: 1 (877) 491-3100
info@nvelopeusa.com
www.nvelopeusa.com



NO.	DESCRIPTION	DATE	INIT.
1	Client Review	03/24/16	rps
2	Client Updates	03/29/16	rps
3	Client Updates	04/06/16	rps
4	Client Review	05/09/16	rps

info@NvelopeUSA.com
<http://www.nvelope.us>

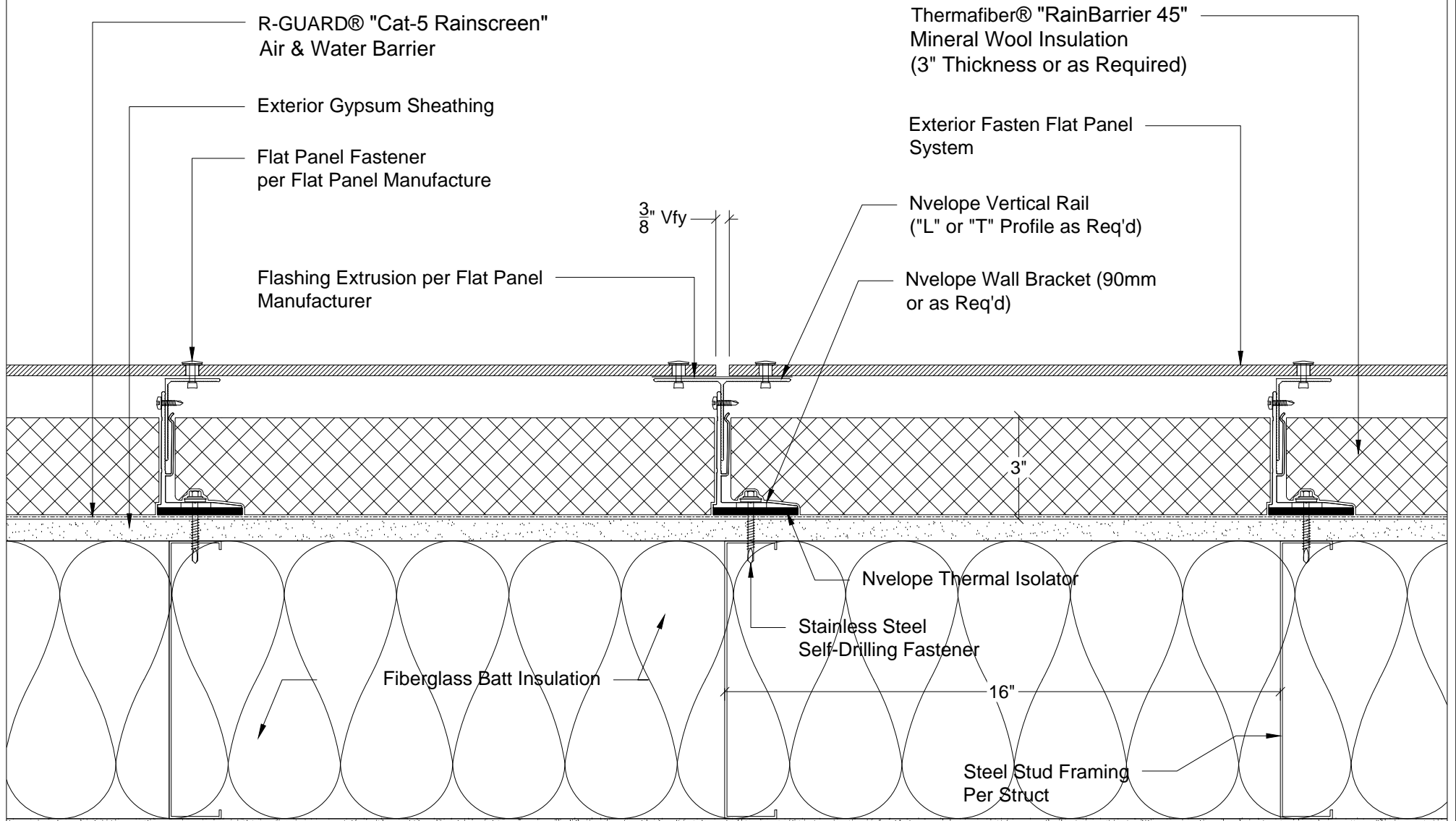
Sheet Title:
DET

Scale:
NTS

System ID:
NV1-EF

Sheet:
S02





01A Wall Assembly - Flat Panel at Steel Stud Framing

DET

PROJECT SPECIFIC ENGINEERING IS REQUIRED TO ADDRESS WIND LOAD, CLADDING WEIGHT/TYPE, PROJECTION, SPACING, ETC). CONTACT NVELOPE FOR ADDITIONAL INFO. GUIDE DETAILS BY NVELOPE ARE PROVIDED FOR GENERAL REFERENCE ONLY AND REPRESENT TYPICAL CONDITIONS FOR OUR CLADDING ATTACHMENT SYSTEMS. ALL IMPLIED WARRANTIES INCLUDING APPROPRIATENESS FOR A SPECIFIC PURPOSE ARE EXPLICITLY EXCLUDED.

System:
NVELOPE USA, LLC.
 Flat Panel

NvelopeUSA, LLC.
 1546 NW 56th Street,
 Seattle WA 98107
 T: 1 (877) 491-3100
info@nvelopeusa.com
www.nvelopeusa.com



NO.	DESCRIPTION	DATE	INIT.
1	Client Review	03/24/16	rps
2	Client Updates	03/29/16	rps
3	Client Updates	04/06/16	rps
4	Client Review	05/09/16	rps

info@NvelopeUSA.com
<http://www.nvelope.us>

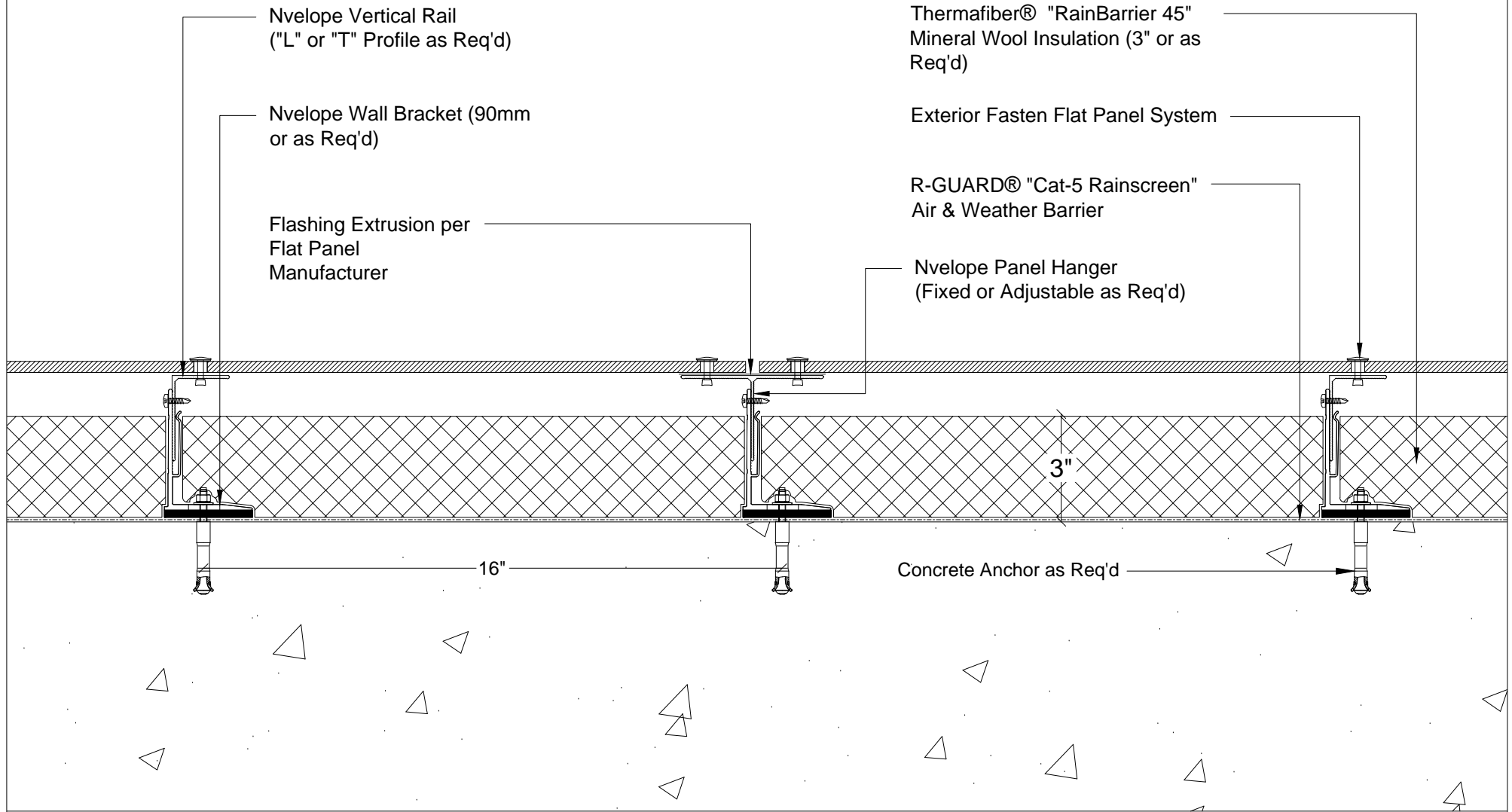
Sheet Title:
DET

Scale:
3" = 1'-0"

System ID:
NV1-EF

Sheet:
01A





01B Wall Assembly - Exterior Fasten Flat Panel System at Structural Concrete
DET

PROJECT SPECIFIC ENGINEERING IS REQUIRED TO ADDRESS WIND LOAD, CLADDING WEIGHT/TYPE, PROJECTION, SPACING, ETC). CONTACT NVELOPE FOR ADDITIONAL INFO. GUIDE DETAILS BY NVELOPE ARE PROVIDED FOR GENERAL REFERENCE ONLY AND REPRESENT TYPICAL CONDITIONS FOR OUR CLADDING ATTACHMENT SYSTEMS. ALL IMPLIED WARRANTIES INCLUDING APPROPRIATENESS FOR A SPECIFIC PURPOSE ARE EXPLICITLY EXCLUDED.

System:
NVELOPE USA, LLC.
Flat Panel

NvelopeUSA, LLC.
 1546 NW 56th Street,
 Seattle WA 98107
 T: 1 (877) 491-3100
info@nvelopeusa.com
www.nvelopeusa.com

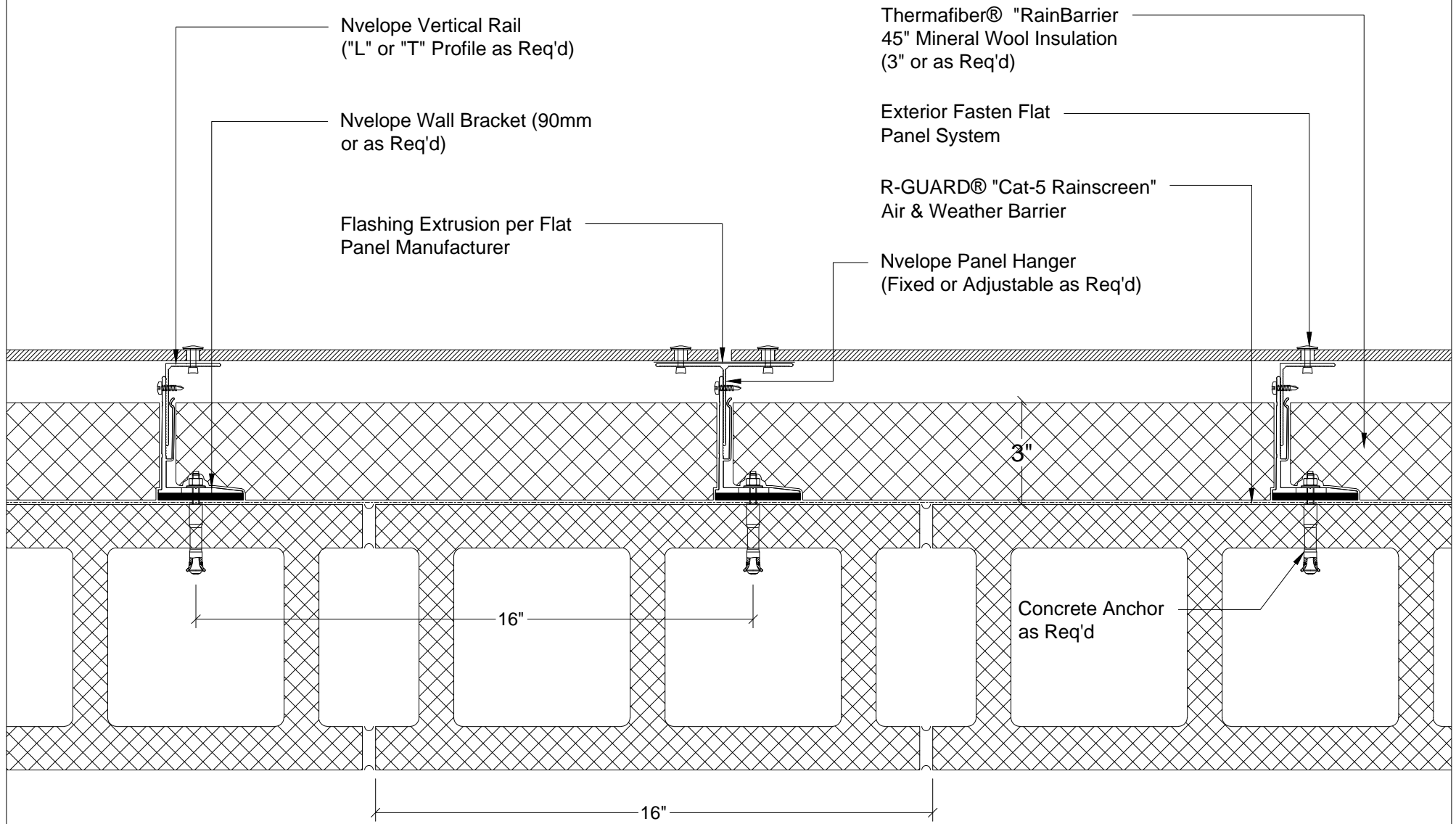


NO.	DESCRIPTION	DATE	INIT.
1	Client Review	03/24/16	rps
2	Client Updates	03/29/16	rps
3	Client Updates	04/06/16	rps
4	Client Review	05/09/16	rps

info@NvelopeUSA.com
<http://www.nvelope.us>

Sheet Title: DET	System ID: NV1-EF
Scale: 3" = 1'-0"	Sheet: 01B





01C
DET

Wall Assembly - Exterior Fasten Flat Panel System at Structural CMU

PROJECT SPECIFIC ENGINEERING IS REQUIRED TO ADDRESS WIND LOAD, CLADDING WEIGHT/TYPE, PROJECTION, SPACING, ETC). CONTACT NVELOPE FOR ADDITIONAL INFO. GUIDE DETAILS BY NVELOPE ARE PROVIDED FOR GENERAL REFERENCE ONLY AND REPRESENT TYPICAL CONDITIONS FOR OUR CLADDING ATTACHMENT SYSTEMS. ALL IMPLIED WARRANTIES INCLUDING APPROPRIATENESS FOR A SPECIFIC PURPOSE ARE EXPLICITLY EXCLUDED.

System:
NVELOPE USA, LLC.
Flat Panel

NvelopeUSA, LLC.
1546 NW 56th Street,
Seattle WA 98107
T: 1 (877) 491-3100
info@nvelopeusa.com
www.nvelopeusa.com

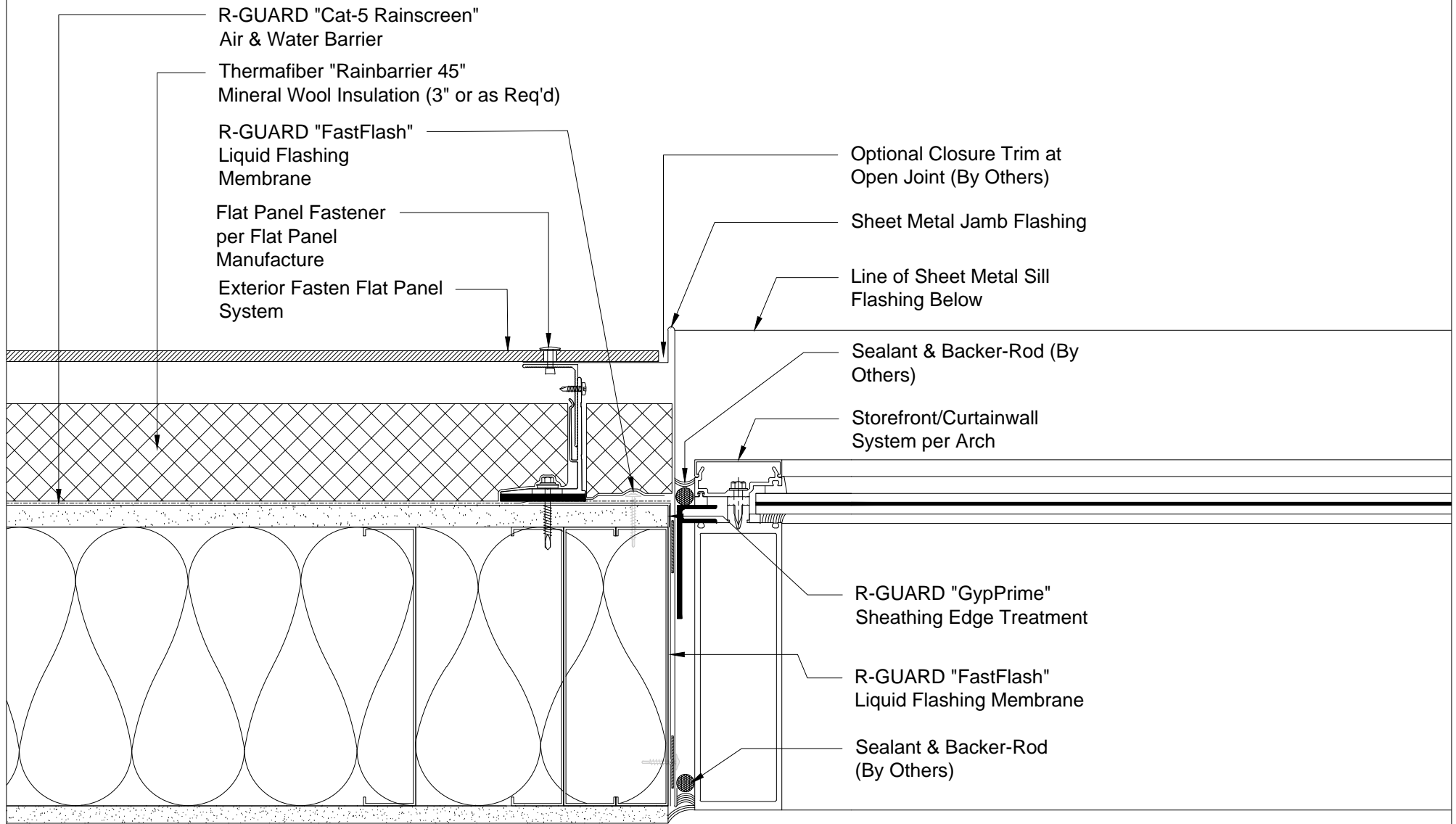


NO.	DESCRIPTION	DATE	INIT.
1	Client Review	03/24/16	rps
2	Client Updates	03/29/16	rps
3	Client Updates	04/06/16	rps
4	Client Review	05/09/16	rps

info@NvelopeUSA.com
http://www.nvelope.us

Sheet Title: DET	System ID: NV1-EF
Scale: 3" = 1'-0"	Sheet: 01C





02 Window Jamb at EF Flat Panel System
DET

PROJECT SPECIFIC ENGINEERING IS REQUIRED TO ADDRESS WIND LOAD, CLADDING WEIGHT/TYPE, PROJECTION, SPACING, ETC). CONTACT NVELOPE FOR ADDITIONAL INFO. GUIDE DETAILS BY NVELOPE ARE PROVIDED FOR GENERAL REFERENCE ONLY AND REPRESENT TYPICAL CONDITIONS FOR OUR CLADDING ATTACHMENT SYSTEMS. ALL IMPLIED WARRANTIES INCLUDING APPROPRIATENESS FOR A SPECIFIC PURPOSE ARE EXPLICITLY EXCLUDED.

System:
NVELOPE USA, LLC.
Flat Panel

NvelopeUSA, LLC.
1546 NW 56th Street,
Seattle WA 98107
T: 1 (877) 491-3100
info@nvelopeusa.com
www.nvelopeusa.com



NO.	DESCRIPTION	DATE	INT.
1	Client Review	03/24/16	rps
2	Client Updates	03/29/16	rps
3	Client Updates	04/06/16	rps
4	Client Review	05/09/16	rps

info@NvelopeUSA.com
http://www.nvelope.us

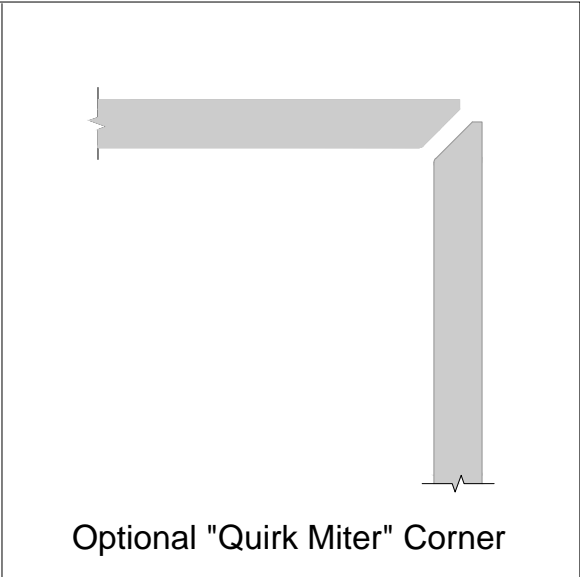
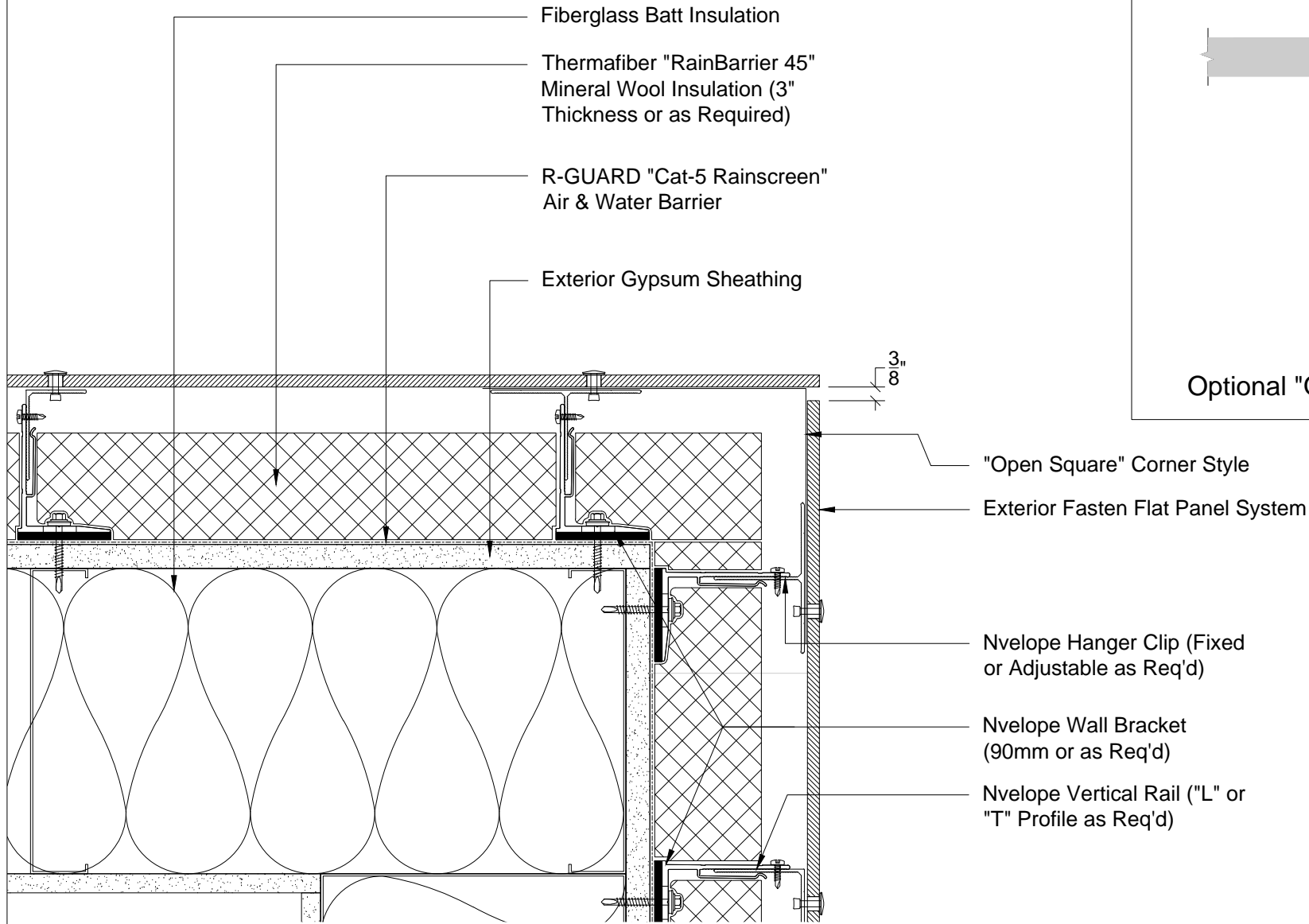
Sheet Title:
DET

System ID:
NV1-EF

Scale:
3" = 1'-0"

Sheet:
02





03 Outside Corner at EF Flat Panel System
DET

PROJECT SPECIFIC ENGINEERING IS REQUIRED TO ADDRESS WIND LOAD, CLADDING WEIGHT/TYPE, PROJECTION, SPACING, ETC). CONTACT NVELOPE FOR ADDITIONAL INFO. GUIDE DETAILS BY NVELOPE ARE PROVIDED FOR GENERAL REFERENCE ONLY AND REPRESENT TYPICAL CONDITIONS FOR OUR CLADDING ATTACHMENT SYSTEMS. ALL IMPLIED WARRANTIES INCLUDING APPROPRIATENESS FOR A SPECIFIC PURPOSE ARE EXPLICITLY EXCLUDED.

System:
NVELOPE USA, LLC.
Flat Panel

NvelopeUSA, LLC.
1546 NW 56th Street,
Seattle WA 98107
T: 1 (877) 491-3100
info@nvelopeusa.com
www.nvelopeusa.com



NO.	DESCRIPTION	DATE	INT.
1	Client Review	03/24/16	rps
2	Client Updates	03/29/16	rps
3	Client Updates	04/06/16	rps
4	Client Review	05/09/16	rps

info@NvelopeUSA.com
http://www.nvelope.us

Sheet Title:
DET

Scale:
3" = 1'-0"

System ID:
NV1-EF

Sheet:
03



Fiberglass Batt Insulation

Exterior Gypsum Sheathing

Nvelope Wall Bracket (90mm or as Req'd)

Nvelope Vertical Rail (Profile as Req'd)

Framing per Struct

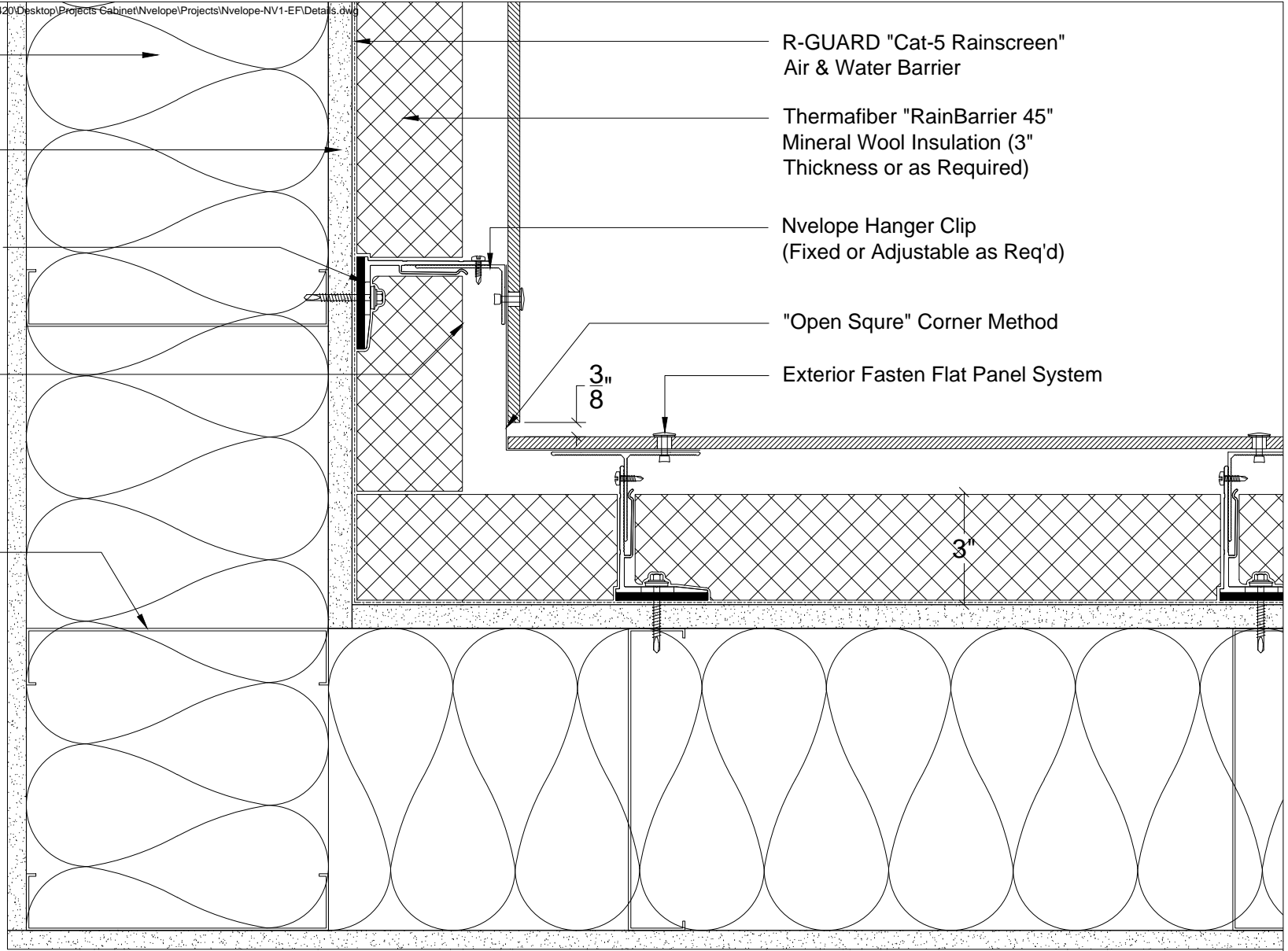
R-GUARD "Cat-5 Rainscreen" Air & Water Barrier

Thermafiber "RainBarrier 45" Mineral Wool Insulation (3" Thickness or as Required)

Nvelope Hanger Clip (Fixed or Adjustable as Req'd)

"Open Squire" Corner Method

Exterior Fasten Flat Panel System



04 Inside Corner at EF Flat Panel System
DET (Refer to Mfg Catalog Options at outside corner detail for "Miter" option)

PROJECT SPECIFIC ENGINEERING IS REQUIRED TO ADDRESS WIND LOAD, CLADDING WEIGHT/TYPE, PROJECTION, SPACING, ETC). CONTACT NVELOPE FOR ADDITIONAL INFO. GUIDE DETAILS BY NVELOPE ARE PROVIDED FOR GENERAL REFERENCE ONLY AND REPRESENT TYPICAL CONDITIONS FOR OUR CLADDING ATTACHMENT SYSTEMS. ALL IMPLIED WARRANTIES INCLUDING APPROPRIATENESS FOR A SPECIFIC PURPOSE ARE EXPLICITLY EXCLUDED.

System:
NVELOPE USA, LLC.
Flat Panel

NvelopeUSA, LLC.
 1546 NW 56th Street,
 Seattle WA 98107
 T: 1 (877) 491-3100
info@nvelopeusa.com
www.nvelopeusa.com



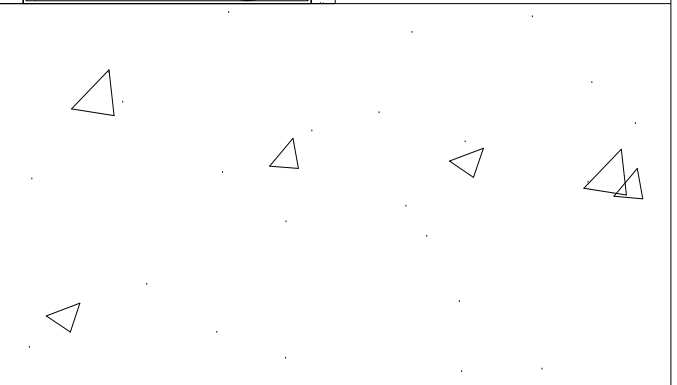
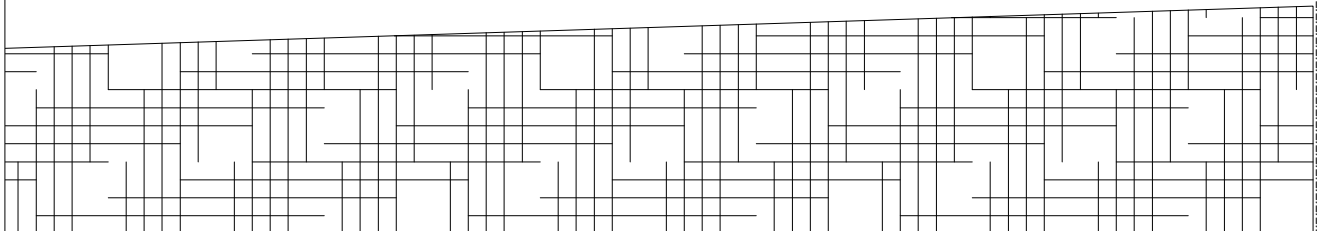
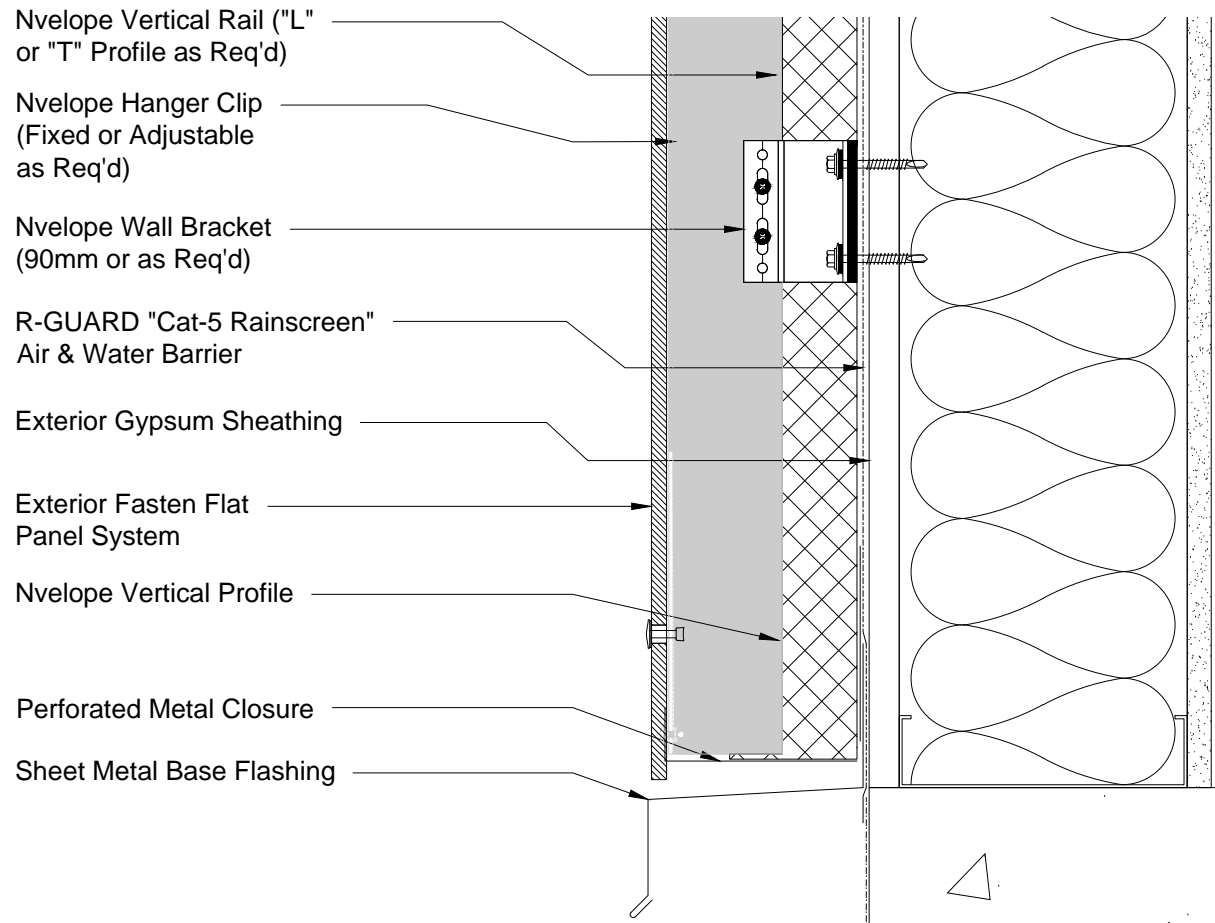
NO.	DESCRIPTION	DATE	INIT.
1	Client Review	03/24/16	rps
2	Client Updates	03/29/16	rps
3	Client Updates	04/06/16	rps
4	Client Review	05/09/16	rps

info@NvelopeUSA.com
<http://www.nvelope.us>

Sheet Title:
DET
 Scale:
3" = 1'-0"

System ID:
NV1-EF
 Sheet:
04





05 Base Detail at EF Flat Panel System
DET

PROJECT SPECIFIC ENGINEERING IS REQUIRED TO ADDRESS WIND LOAD, CLADDING WEIGHT/TYPE, PROJECTION, SPACING, ETC). CONTACT NVELOPE FOR ADDITIONAL INFO. GUIDE DETAILS BY NVELOPE ARE PROVIDED FOR GENERAL REFERENCE ONLY AND REPRESENT TYPICAL CONDITIONS FOR OUR CLADDING ATTACHMENT SYSTEMS. ALL IMPLIED WARRANTIES INCLUDING APPROPRIATENESS FOR A SPECIFIC PURPOSE ARE EXPLICITLY EXCLUDED.

System: **NVELOPE USA, LLC.**
Flat Panel

NvelopeUSA, LLC.
1546 NW 56th Street,
Seattle WA 98107
T: 1 (877) 491-3100
info@nvelopeusa.com
www.nvelopeusa.com

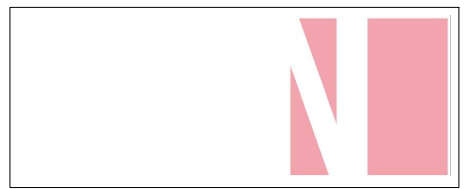


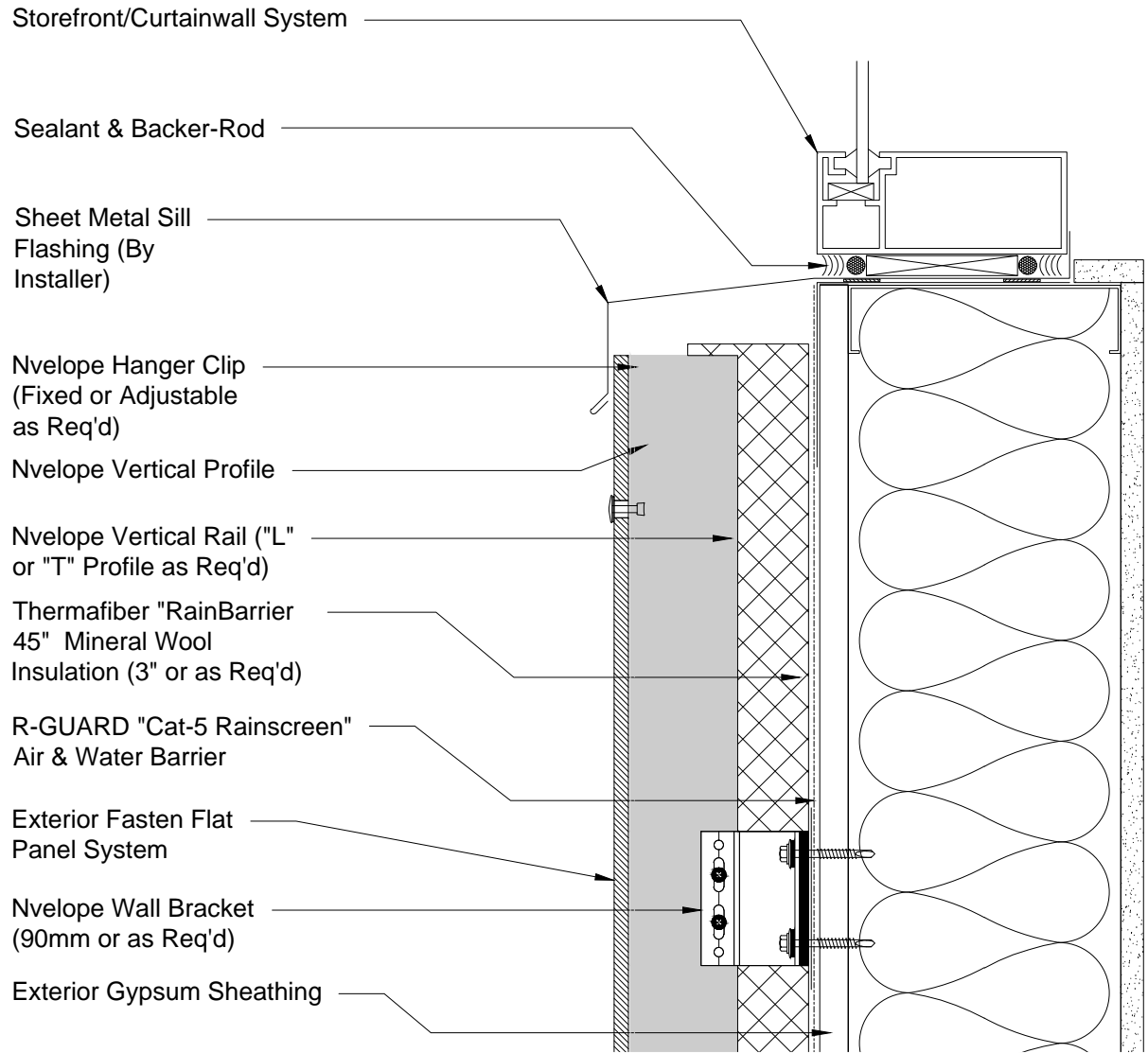
NO.	DESCRIPTION	DATE	INIT.
1	Client Review	03/24/16	rps
2	Client Updates	03/29/16	rps
3	Client Updates	04/06/16	rps
4	Client Review	05/09/16	rps

info@NvelopeUSA.com
<http://www.nvelope.us>

Sheet Title: **DET** System ID: **NV1-EF**

Scale: **3" = 1'-0"** Sheet: **05**





06 Window Sill at EF Flat Panel System
DET

PROJECT SPECIFIC ENGINEERING IS REQUIRED TO ADDRESS WIND LOAD, CLADDING WEIGHT/TYPE, PROJECTION, SPACING, ETC). CONTACT NVELOPE FOR ADDITIONAL INFO. GUIDE DETAILS BY NVELOPE ARE PROVIDED FOR GENERAL REFERENCE ONLY AND REPRESENT TYPICAL CONDITIONS FOR OUR CLADDING ATTACHMENT SYSTEMS. ALL IMPLIED WARRANTIES INCLUDING APPROPRIATENESS FOR A SPECIFIC PURPOSE ARE EXPLICITLY EXCLUDED.

System:
NVELOPE USA, LLC.
Flat Panel

NvelopeUSA, LLC.
1546 NW 56th Street,
Seattle WA 98107
T: 1 (877) 491-3100
info@nvelopeusa.com
www.nvelopeusa.com



NO.	DESCRIPTION	DATE	INIT.
1	Client Review	03/24/16	rps
2	Client Updates	03/29/16	rps
3	Client Updates	04/06/16	rps
4	Client Review	05/09/16	rps

info@NvelopeUSA.com
<http://www.nvelope.us>

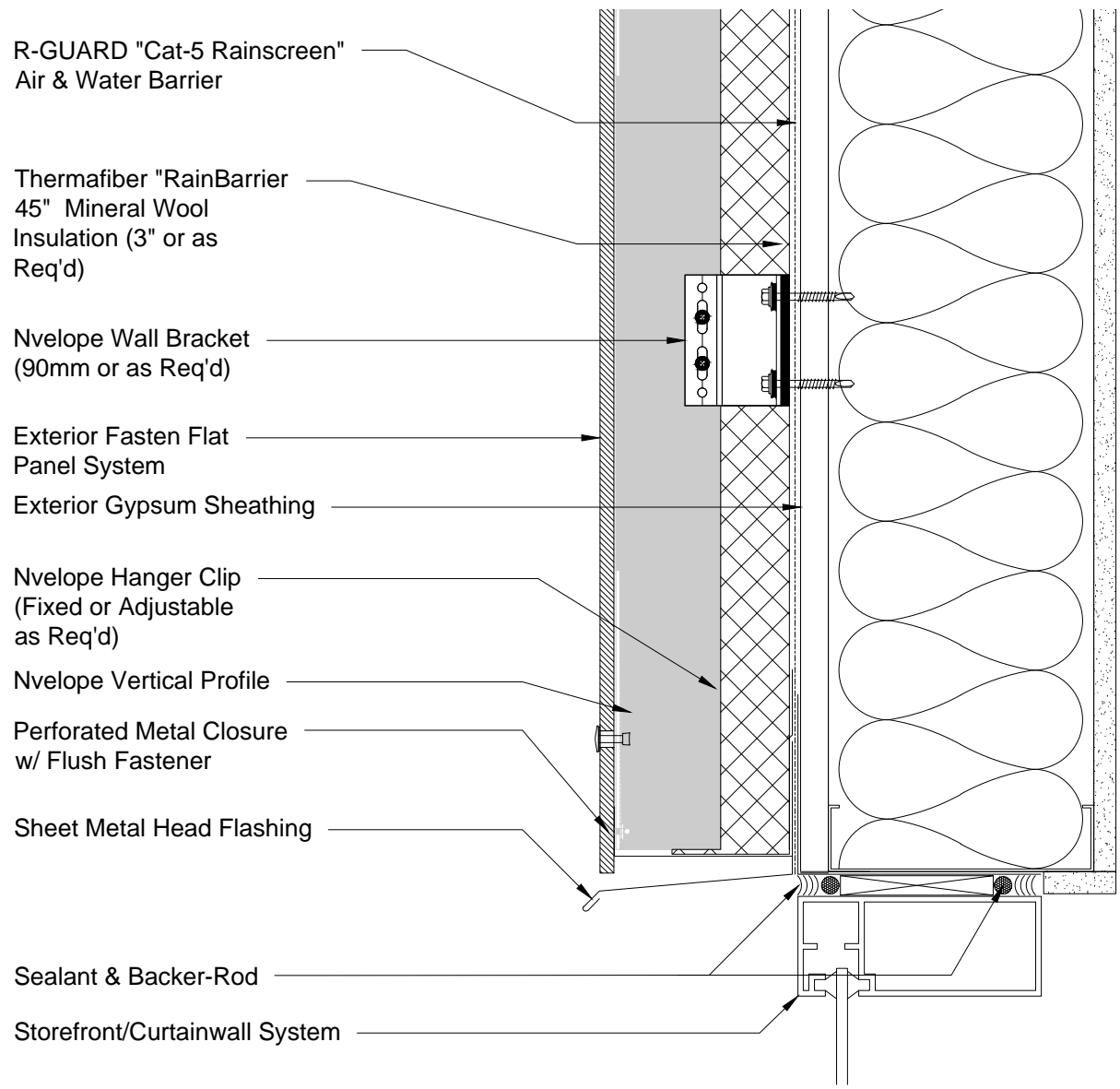
Sheet Title:
DET

Scale:
3" = 1'-0"

System ID:
NV1-EF

Sheet:
06





07 Window Head at EF Flat Panel System
DET

PROJECT SPECIFIC ENGINEERING IS REQUIRED TO ADDRESS WIND LOAD, CLADDING WEIGHT/TYPE, PROJECTION, SPACING, ETC). CONTACT NVELOPE FOR ADDITIONAL INFO. GUIDE DETAILS BY NVELOPE ARE PROVIDED FOR GENERAL REFERENCE ONLY AND REPRESENT TYPICAL CONDITIONS FOR OUR CLADDING ATTACHMENT SYSTEMS. ALL IMPLIED WARRANTIES INCLUDING APPROPRIATENESS FOR A SPECIFIC PURPOSE ARE EXPLICITLY EXCLUDED.

System: **NVELOPE USA, LLC.**
Flat Panel

NvelopeUSA, LLC.
1546 NW 56th Street,
Seattle WA 98107
T: 1 (877) 491-3100
info@nvelopeusa.com
www.nvelopeusa.com

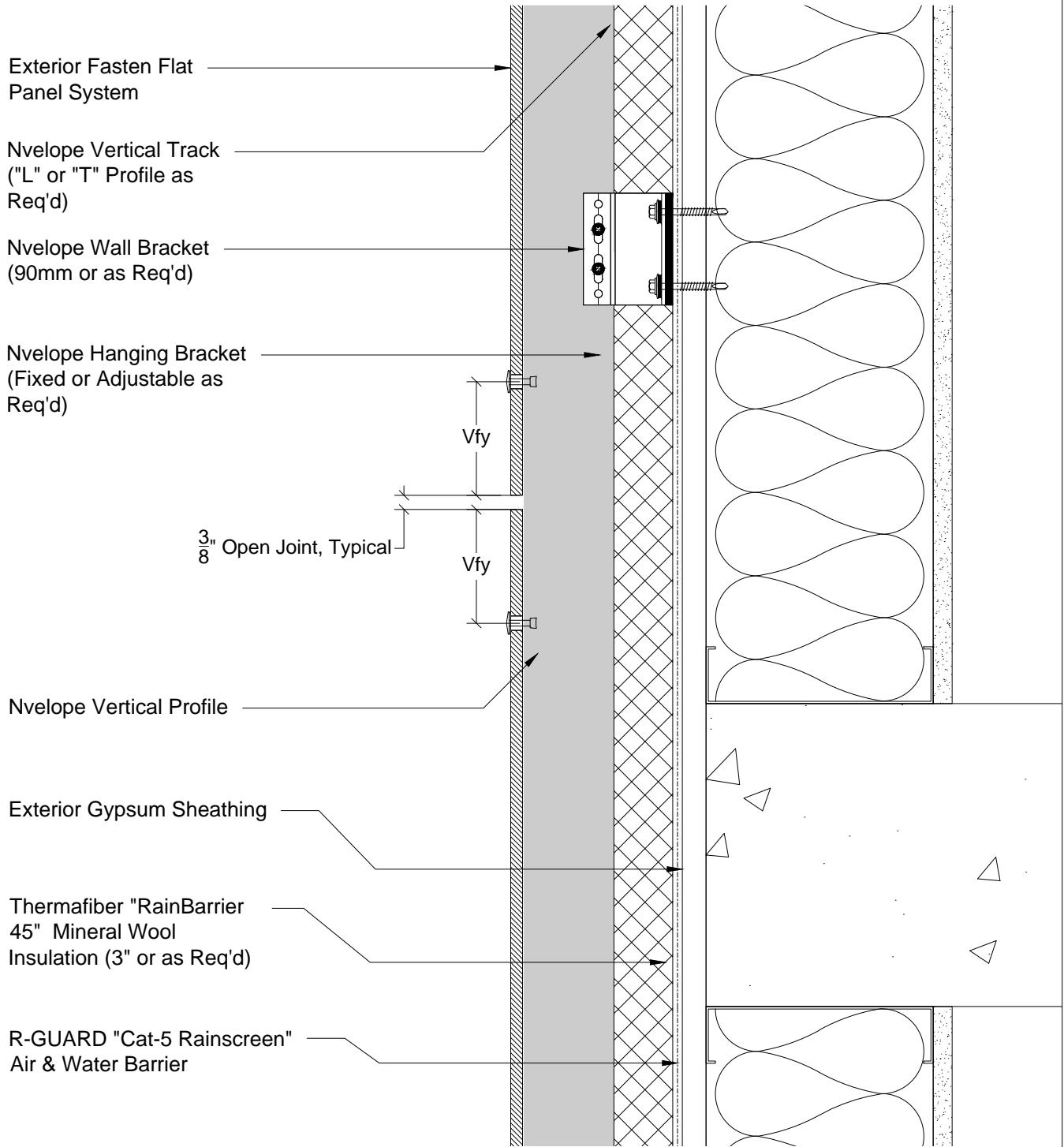


NO.	DESCRIPTION	DATE	INIT.
1	Client Review	03/24/16	rps
2	Client Updates	03/29/16	rps
3	Client Updates	04/06/16	rps
4	Client Review	05/09/16	rps

info@NvelopeUSA.com
<http://www.nvelope.us>

Sheet Title: DET	System ID: NV1-EF
Scale: 3" = 1'-0"	Sheet: 07





08
DET

Wall Section at EF Flat Panel System

PROJECT SPECIFIC ENGINEERING IS REQUIRED TO ADDRESS WIND LOAD, CLADDING WEIGHT/TYPE, PROJECTION, SPACING, ETC). CONTACT NVELOPE FOR ADDITIONAL INFO. GUIDE DETAILS BY NVELOPE ARE PROVIDED FOR GENERAL REFERENCE ONLY AND REPRESENT TYPICAL CONDITIONS FOR OUR CLADDING ATTACHMENT SYSTEMS. ALL IMPLIED WARRANTIES INCLUDING APPROPRIATENESS FOR A SPECIFIC PURPOSE ARE EXPLICITLY EXCLUDED.

System: **NVELOPE USA, LLC.**
Flat Panel

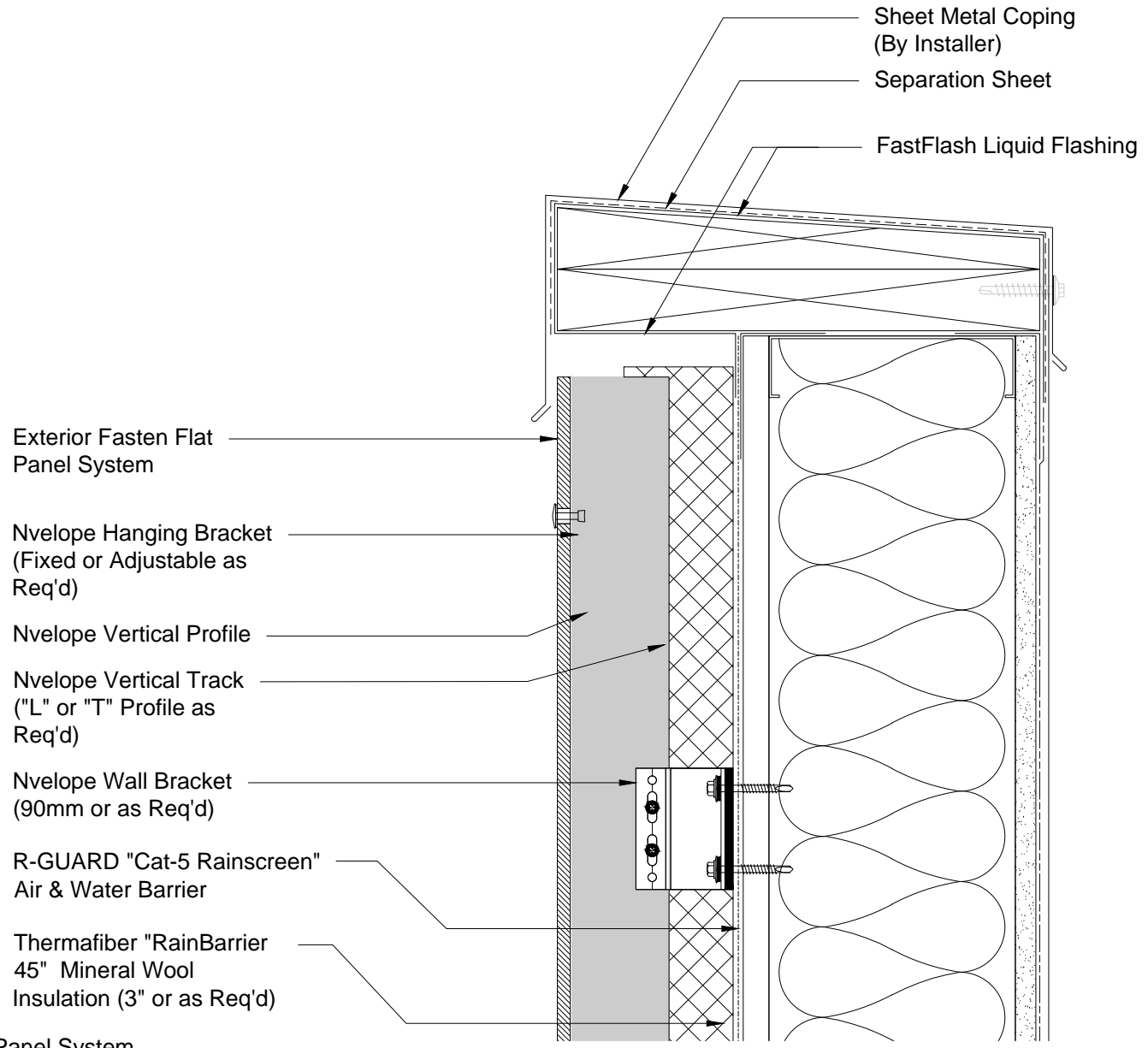
NvelopeUSA, LLC.
1546 NW 56th Street,
Seattle WA 98107
T: 1 (877) 491-3100
info@nvelopeusa.com
www.nvelopeusa.com



NO.	DESCRIPTION	DATE	INIT.
1	Client Review	03/24/16	rps
2	Client Updates	03/29/16	rps
3	Client Updates	04/06/16	rps
4	Client Review	05/09/16	rps

info@NvelopeUSA.com
<http://www.nvelope.us>

Sheet Title: DET	System ID: NV1-EF
Scale: 3" = 1'-0"	Sheet: 08



09 Parapet Detail at EF Flat Panel System
DET

PROJECT SPECIFIC ENGINEERING IS REQUIRED TO ADDRESS WIND LOAD, CLADDING WEIGHT/TYPE, PROJECTION, SPACING, ETC). CONTACT NVELOPE FOR ADDITIONAL INFO. GUIDE DETAILS BY NVELOPE ARE PROVIDED FOR GENERAL REFERENCE ONLY AND REPRESENT TYPICAL CONDITIONS FOR OUR CLADDING ATTACHMENT SYSTEMS. ALL IMPLIED WARRANTIES INCLUDING APPROPRIATENESS FOR A SPECIFIC PURPOSE ARE EXPLICITLY EXCLUDED.

System:
NVELOPE USA, LLC.
Flat Panel

NvelopeUSA, LLC.
1546 NW 56th Street,
Seattle WA 98107
T: 1 (877) 491-3100
info@nvelopeusa.com
www.nvelopeusa.com



NO.	DESCRIPTION	DATE	INIT.
1	Client Review	03/24/16	rps
2	Client Updates	03/29/16	rps
3	Client Updates	04/06/16	rps
4	Client Review	05/09/16	rps

info@NvelopeUSA.com
<http://www.nvelope.us>

Sheet Title: DET	System ID: NV1-EF
Scale: 3" = 1'-0"	Sheet: 09

