

**FINISHES / NOTES**

VARIOUS FINISHES AVAILABLE

GRADE 6063T6 MILL FINISH

GRADE 6063T6. MILL FINISH VARIABLE BRACKETS AND SIZES

GRADE 6063T6 BLACK ANODISED

GRADE 6063T6 MILL FINISH

GRADE 6063T6 MILL FINISH

GRADE 3005H47. MILL FINISH

**KEY COMPONENT LEGEND**

(A) ALSECCO AIRTEC GLASS

(B) VERTICAL ALUMINIUM T SECTION SUPPORT

(C) ALUMINIUM BRACKET WITH ISOLATION PAD

(D) 6803 RAIL PROFILE ANODISED BLACK

(E) 50MM TOP CLIP WITH ADJUSTABLE SCREW

(F) 50MM INTERMEDIATE/BASE CLIP

(G) RESTRAINING CLIPS

(1) INDICATIVE FINISHES NOT BY TELLING Eg :

INSULATION

BREATHER MEMBRANE

STEEL FRAMING SYSTEM

INTERNAL FINISHES

GLAZING SYSTEMS AND SEALS

CLOSURE TRIMS / FLASHINGS

Rev.	Date	Comments
------	------	----------



Telling Architectural Ltd  
 7 The Dell  
 Enterprise Drive  
 Four Ashes  
 Wolverhampton  
 WV10 7DF  
 Tel : 01902 797 700  
 Fax : 01902 797 720

© Telling Architectural Ltd  
 Do not scale from this drawing. If in doubt ask

Material :  
**ALSECCO GLASS PANELS**

Series :  
**A SERIES  
 HORIZONTAL RAIL &  
 VERTICAL T TO SFS**

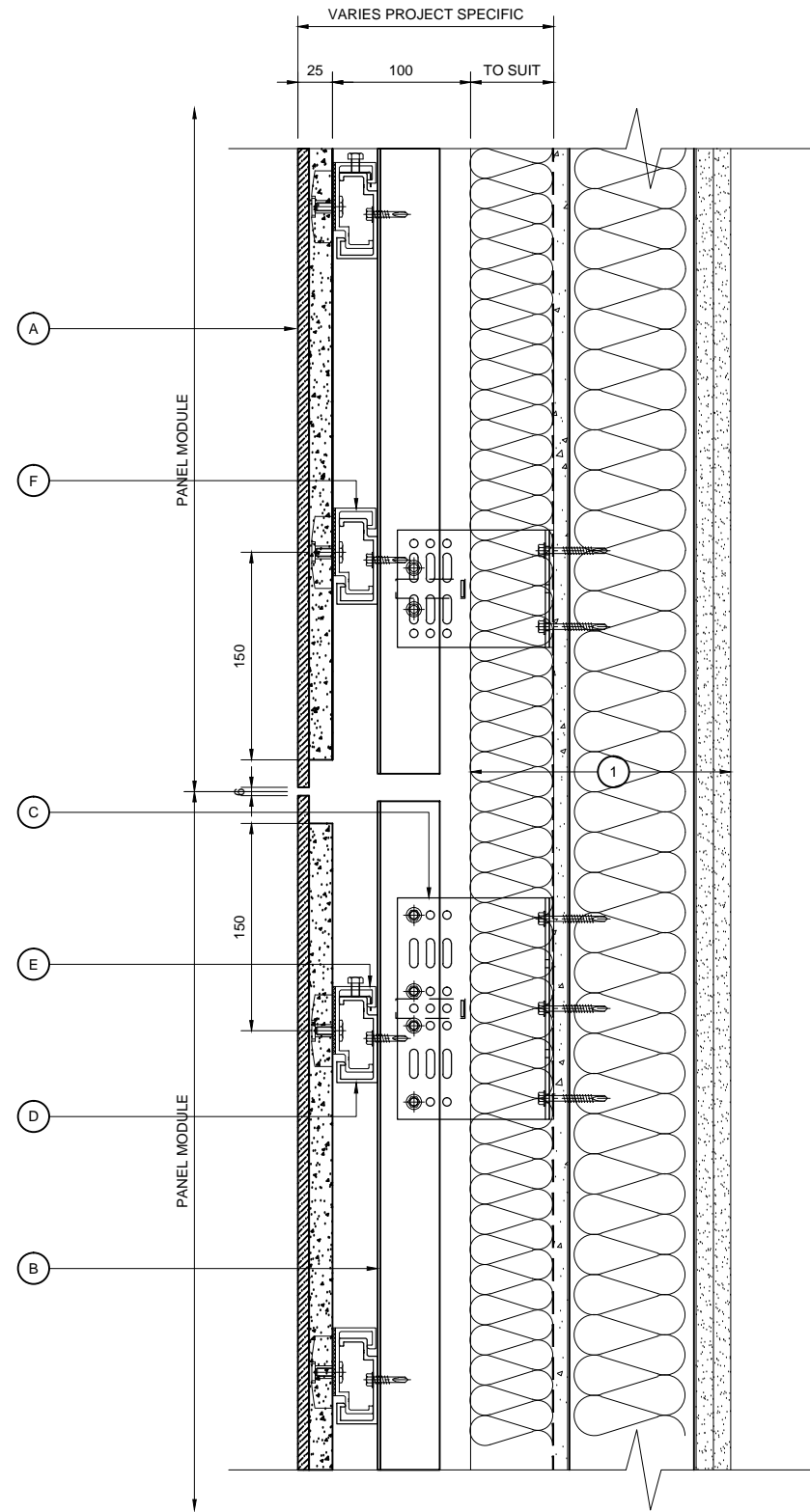
Drawing Title :  
**SYSTEM COMPONENTS AND  
 NOTES**

Scale :  
**1 : 5**

Drawn : HB  
 Date : FEB 15

Size	Drawing No.	Rev.
A3	ALG-A-INDEX	





NOTE:  
THESE STANDARD DETAILS DO NOT  
INCORPORATE FIRE BARRIER  
REQUIREMENTS AROUND WINDOW  
OPENINGS AND FLOOR SLABS.  
THESE INTERFACING  
REQUIREMENTS MUST BE  
REVIEWED WITH THE LOCAL FIRE  
INSPECTOR BEFORE FINALISATION  
OF DETAILS.

VERTICAL SECTION

KEY COMPONENT LEGEND

- (A) ALSECCO AIRTEC GLASS
- (B) VERTICAL ALUMINIUM T SECTION SUPPORT
- (C) ALUMINIUM BRACKET WITH ISOLATION PAD
- (D) 6803 RAIL PROFILE ANODISED BLACK
- (E) 50MM TOP CLIP WITH ADJUSTABLE SCREW
- (F) 50MM INTERMEDIATE/BASE CLIP
- (G) RESTRAINING CLIPS

- 1 INDICATIVE FINISHES NOT BY TELLING Eg :
- INSULATION
  - BREATHER MEMBRANE
  - STEEL FRAMING SYSTEM
  - INTERNAL FINISHES
  - GLAZING SYSTEMS AND SEALS
  - CLOSURE TRIMS / FLASHINGS

Rev.	Date	Comments



Telling Architectural Ltd  
7 The Dell  
Enterprise Drive  
Four Ashes  
Wolverhampton  
WV10 7DF  
Tel : 01902 797 700  
Fax : 01902 797 720

© Telling Architectural Ltd  
Do not scale from this drawing. If in doubt ask

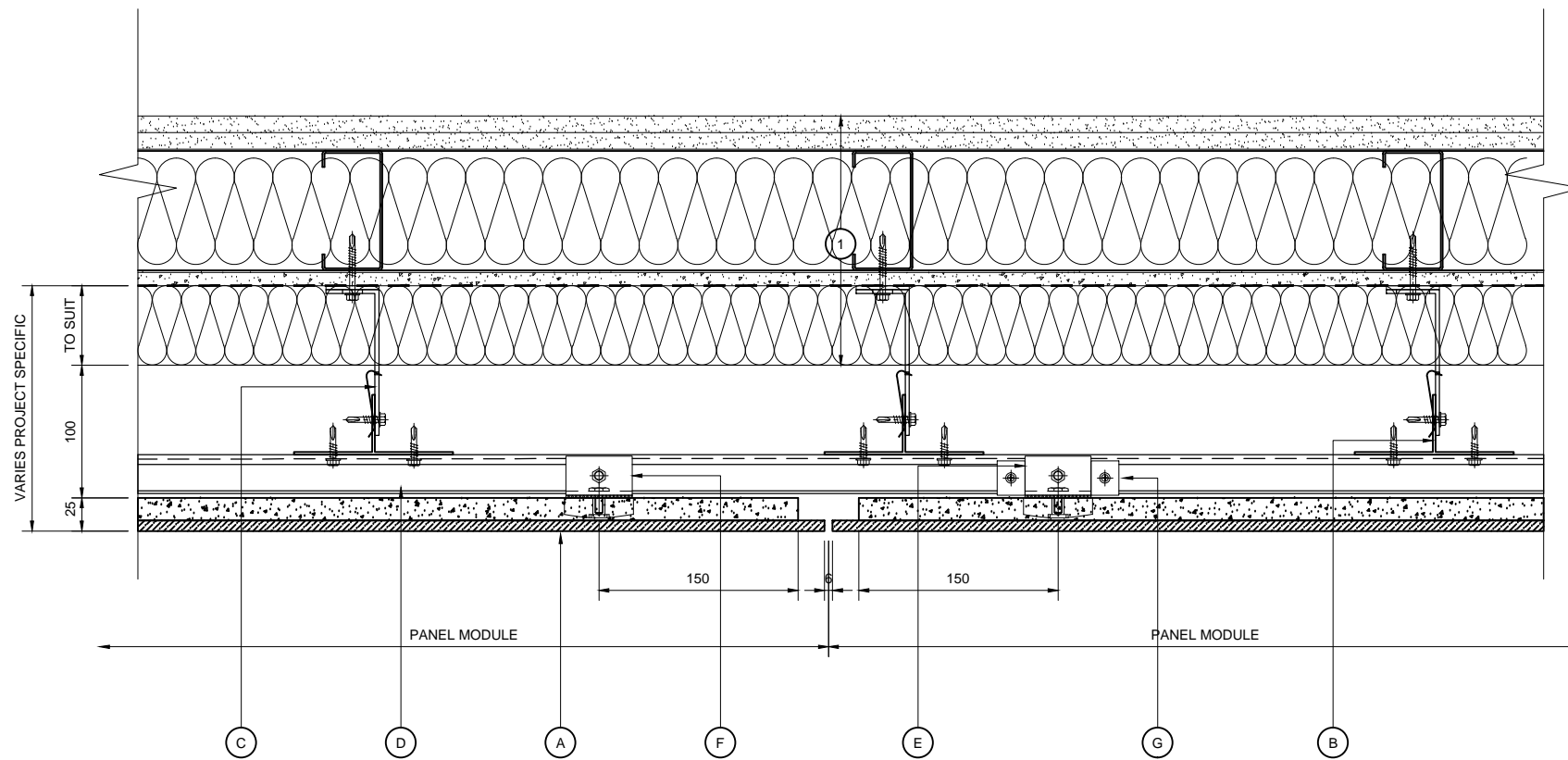
Material :  
**ALSECCO GLASS PANELS**

Series :  
**A SERIES  
HORIZONTAL RAIL &  
VERTICAL T TO SFS**

Drawing Title :  
**VERTICAL SECTION**

Scale : 1 : 5  
Drawn : HB  
Date : FEB 15

Size	Drawing No.	Rev.
A3	ALG-AD01	



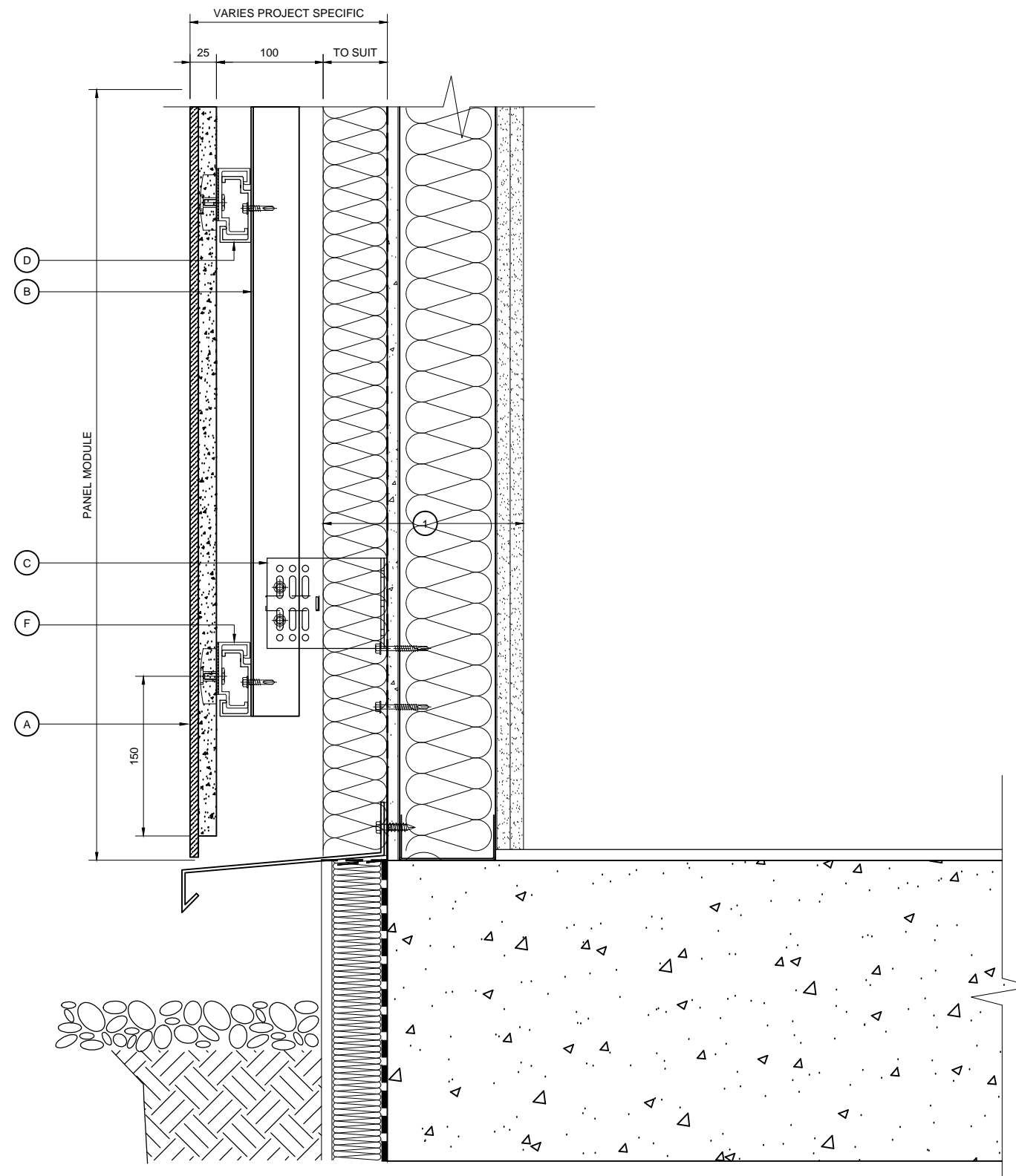
- KEY COMPONENT LEGEND**
- (A) ALSECCO AIRTEC GLASS
  - (B) VERTICAL ALUMINIUM T SECTION SUPPORT
  - (C) ALUMINIUM BRACKET WITH ISOLATION PAD
  - (D) 6803 RAIL PROFILE ANODISED BLACK
  - (E) 50MM TOP CLIP WITH ADJUSTABLE SCREW
  - (F) 50MM INTERMEDIATE/BASE CLIP
  - (G) RESTRAINING CLIPS

- (1) INDICATIVE FINISHES NOT BY TELLING Eg:
- INSULATION
  - BREATHER MEMBRANE
  - STEEL FRAMING SYSTEM
  - INTERNAL FINISHES
  - GLAZING SYSTEMS AND SEALS
  - CLOSURE TRIMS / FLASHINGS

NOTE:  
THESE STANDARD DETAILS DO NOT INCORPORATE FIRE BARRIER REQUIREMENTS AROUND WINDOW OPENINGS AND FLOOR SLABS. THESE INTERFACING REQUIREMENTS MUST BE REVIEWED WITH THE LOCAL FIRE INSPECTOR BEFORE FINALISATION OF DETAILS.

HORIZONTAL SECTION

Rev.	Date	Comments
 Telling Architectural Ltd 7 The Dell Enterprise Drive Four Ashes Wolverhampton WV10 7DF Tel : 01902 797 700 Fax : 01902 797 720		
<small>© Telling Architectural Ltd Do not scale from this drawing. If in doubt ask</small>		
Material :		
ALSECCO GLASS PANELS		
Series :		
A SERIES HORIZONTAL RAIL & VERTICAL T TO SFS		
Drawing Title :		
HORIZONTAL SECTION		
Scale :	Drawn :	HB
1 : 5	Date :	FEB 15
Size	Drawing No.	Rev.
A3	ALG-AD02	



BASE DETAIL

NOTE:  
 THESE STANDARD DETAILS DO NOT  
 INCORPORATE FIRE BARRIER  
 REQUIREMENTS AROUND WINDOW  
 OPENINGS AND FLOOR SLABS.  
 THESE INTERFACING  
 REQUIREMENTS MUST BE  
 REVIEWED WITH THE LOCAL FIRE  
 INSPECTOR BEFORE FINALISATION  
 OF DETAILS.

KEY COMPONENT LEGEND

- (A) ALSECCO AIRTEC GLASS
- (B) VERTICAL ALUMINIUM T SECTION SUPPORT
- (C) ALUMINIUM BRACKET WITH ISOLATION PAD
- (D) 6803 RAIL PROFILE ANODISED BLACK
- (E) 50MM TOP CLIP WITH ADJUSTABLE SCREW
- (F) 50MM INTERMEDIATE/BASE CLIP
- (G) RESTRAINING CLIPS

- (1) INDICATIVE FINISHES NOT BY TELLING Eg:
- INSULATION
  - BREATHER MEMBRANE
  - STEEL FRAMING SYSTEM
  - INTERNAL FINISHES
  - GLAZING SYSTEMS AND SEALS
  - CLOSURE TRIMS / FLASHINGS

Rev.	Date	Comments

 Telling Architectural

Telling Architectural Ltd  
 7 The Dell  
 Enterprise Drive  
 Four Ashes  
 Wolverhampton  
 WV10 7DF

Tel: 01902 797 700  
 Fax: 01902 797 720

© Telling Architectural Ltd  
 Do not scale from this drawing. If in doubt ask

Material :  
**ALSECCO GLASS PANELS**

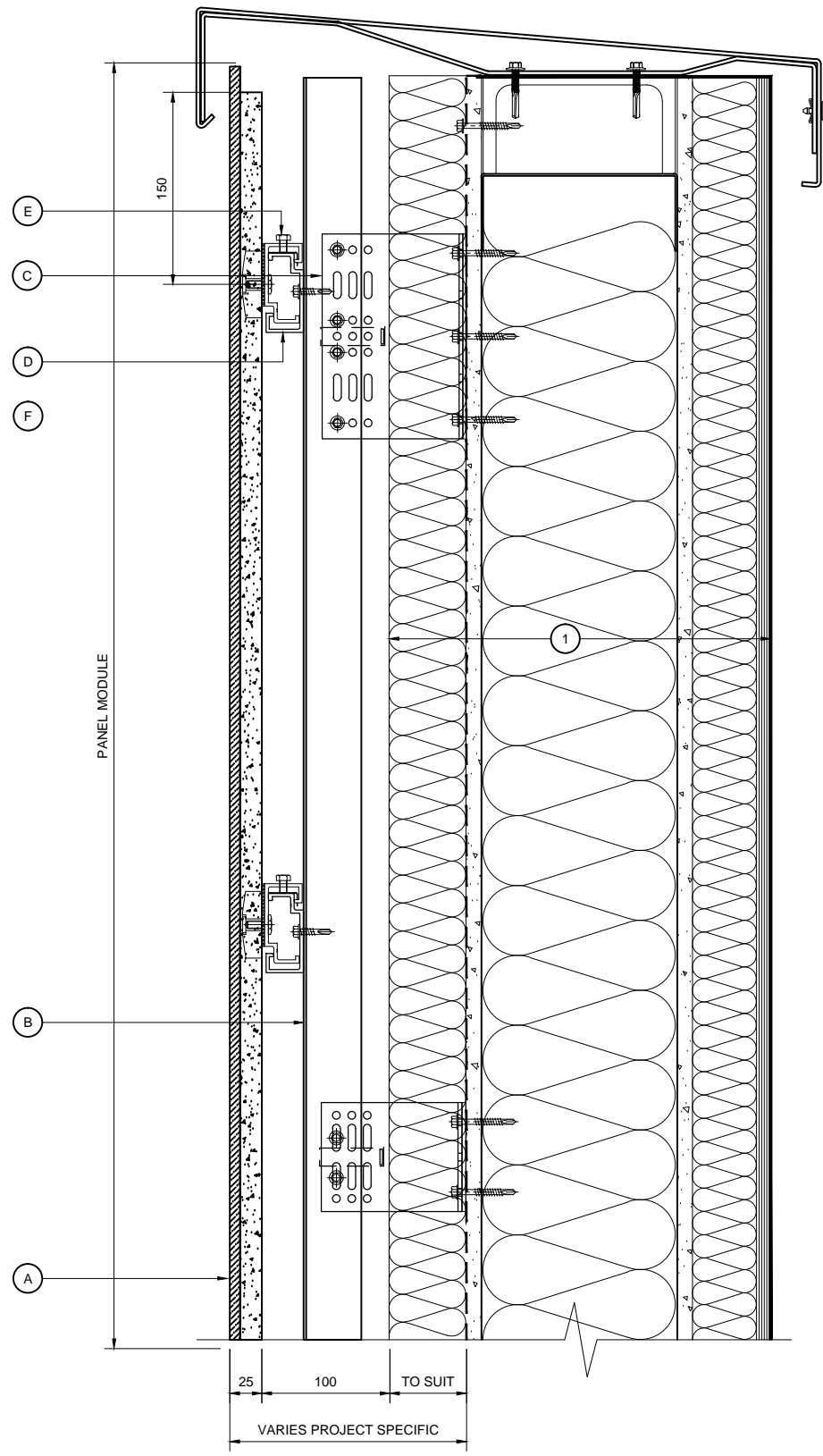
Series :  
**A SERIES  
 HORIZONTAL RAIL &  
 VERTICAL T TO SFS**

Drawing Title :  
**BASE DETAIL**

Scale :  
**1 : 5**

Drawn : HB  
 Date : FEB 15

Size	Drawing No.	Rev.
A3	ALG-AD03	



PARAPET DETAIL

NOTE:  
 THESE STANDARD DETAILS DO NOT  
 INCORPORATE FIRE BARRIER  
 REQUIREMENTS AROUND WINDOW  
 OPENINGS AND FLOOR SLABS.  
 THESE INTERFACING  
 REQUIREMENTS MUST BE  
 REVIEWED WITH THE LOCAL FIRE  
 INSPECTOR BEFORE FINALISATION  
 OF DETAILS.

- KEY COMPONENT LEGEND**
- (A) ALSECCO AIRTEC GLASS
  - (B) VERTICAL ALUMINIUM T SECTION SUPPORT
  - (C) ALUMINIUM BRACKET WITH ISOLATION PAD
  - (D) 6803 RAIL PROFILE ANODISED BLACK
  - (E) 50MM TOP CLIP WITH ADJUSTABLE SCREW
  - (F) 50MM INTERMEDIATE/BASE CLIP
  - (G) RESTRAINING CLIPS

- (1) INDICATIVE FINISHES NOT BY TELLING Eg:
- INSULATION
  - BREATHER MEMBRANE
  - STEEL FRAMING SYSTEM
  - INTERNAL FINISHES
  - GLAZING SYSTEMS AND SEALS
  - CLOSURE TRIMS / FLASHINGS

Rev.	Date	Comments

**Telling Architectural**

Telling Architectural Ltd  
 7 The Dell  
 Enterprise Drive  
 Four Ashes  
 Wolverhampton  
 WV10 7DF

Tel : 01902 797 700  
 Fax : 01902 797 720

© Telling Architectural Ltd  
 Do not scale from this drawing. If in doubt ask

Material :  
**ALSECCO GLASS PANELS**

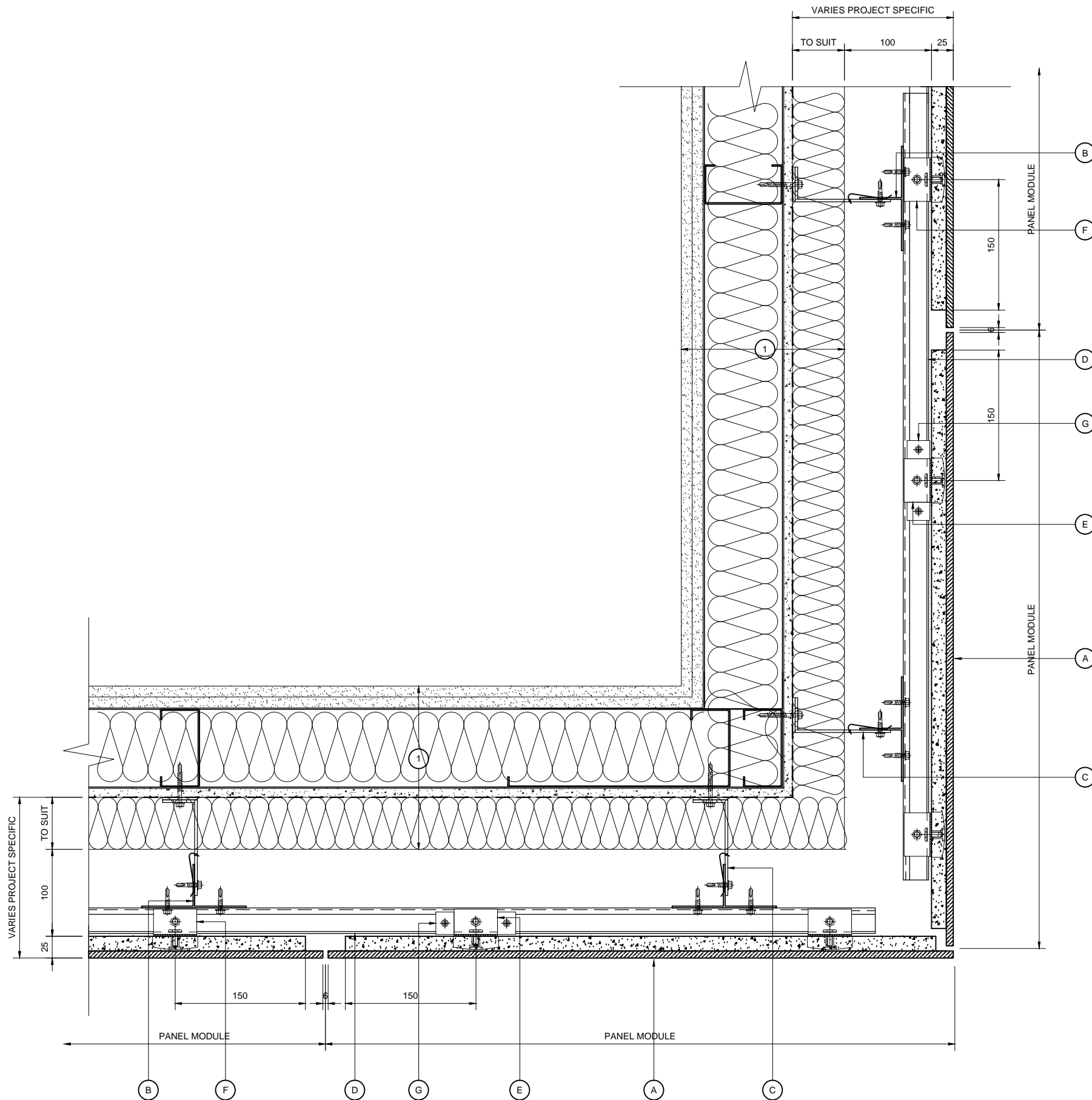
Series :  
**A SERIES  
 HORIZONTAL RAIL &  
 VERTICAL T TO SFS**

Drawing Title :  
**PARAPET DETAIL**

Scale : 1 : 5  
 Drawn : HB  
 Date : FEB 15

Size	Drawing No.	Rev.
A3	ALG-AD04	





EXTERNAL CORNER DETAIL

NOTE:  
 THESE STANDARD DETAILS DO NOT  
 INCORPORATE FIRE BARRIER  
 REQUIREMENTS AROUND WINDOW  
 OPENINGS AND FLOOR SLABS.  
 THESE INTERFACING  
 REQUIREMENTS MUST BE  
 REVIEWED WITH THE LOCAL FIRE  
 INSPECTOR BEFORE FINALISATION  
 OF DETAILS.

KEY COMPONENT LEGEND

- (A) ALSECCO AIRTEC GLASS
- (B) VERTICAL ALUMINIUM T SECTION SUPPORT
- (C) ALUMINIUM BRACKET WITH ISOLATION PAD
- (D) 6803 RAIL PROFILE ANODISED BLACK
- (E) 50MM TOP CLIP WITH ADJUSTABLE SCREW
- (F) 50MM INTERMEDIATE/BASE CLIP
- (G) RESTRAINING CLIPS

(1) INDICATIVE FINISHES NOT BY TELLING Eg:

- INSULATION
- BREATHER MEMBRANE
- STEEL FRAMING SYSTEM
- INTERNAL FINISHES
- GLAZING SYSTEMS AND SEALS
- CLOSURE TRIMS / FLASHINGS

Rev.	Date	Comments



Telling Architectural Ltd  
 7 The Dell  
 Enterprise Drive  
 Four Ashes  
 Wolverhampton  
 WV10 7DF  
 Tel : 01902 797 700  
 Fax : 01902 797 720

© Telling Architectural Ltd  
 Do not scale from this drawing. If in doubt ask

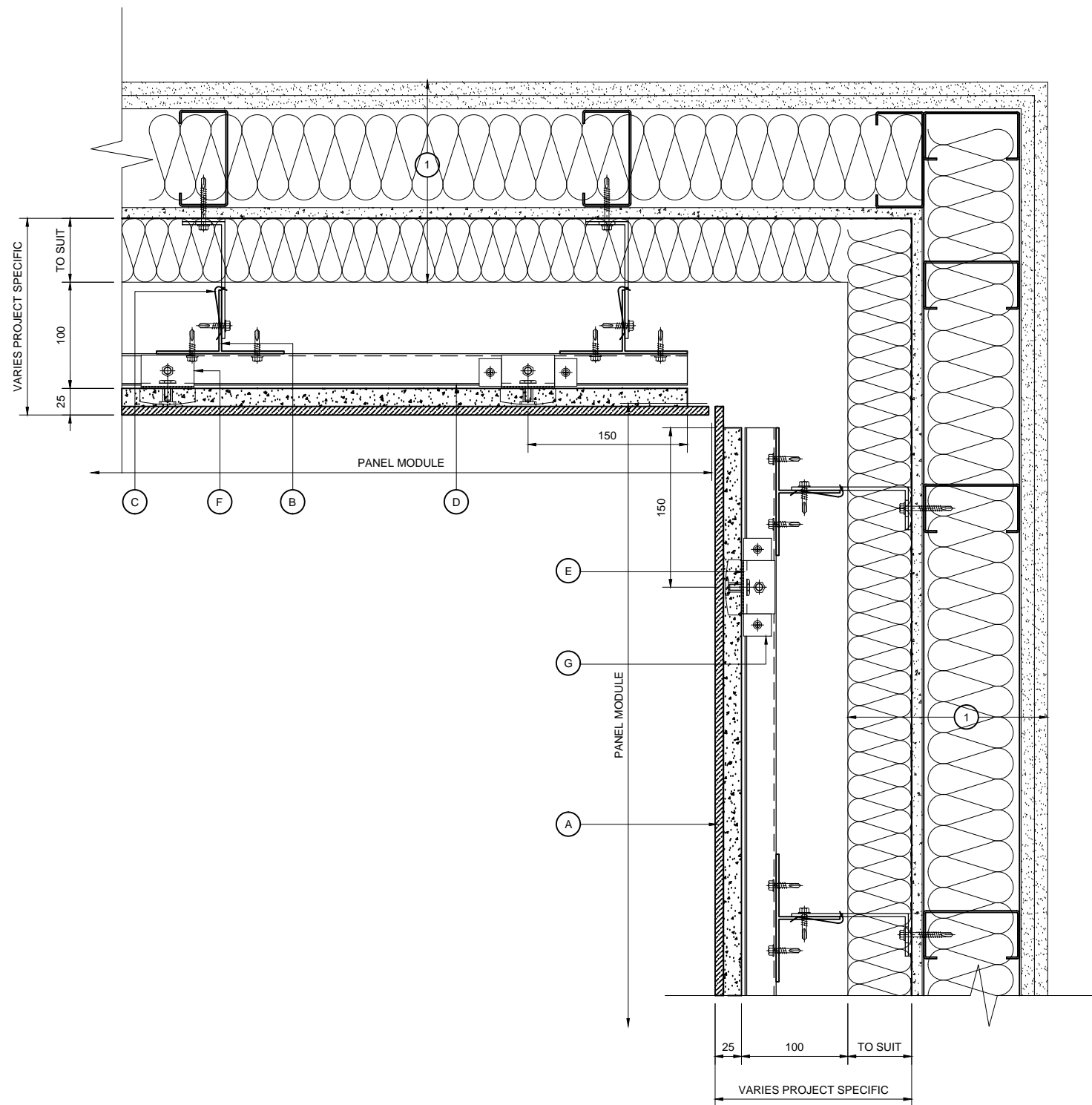
Material :  
**ALSECCO GLASS PANELS**

Series :  
**A SERIES  
 HORIZONTAL RAIL &  
 VERTICAL T TO SFS**

Drawing Title :  
**EXTERNAL CORNER DETAIL**

Scale :  
**1 : 5**  
 Drawn : HB  
 Date : FEB 15

Size	Drawing No.	Rev.
A3	ALG-AD05	



INTERNAL CORNER DETAIL

NOTE:  
THESE STANDARD DETAILS DO NOT  
INCORPORATE FIRE BARRIER  
REQUIREMENTS AROUND WINDOW  
OPENINGS AND FLOOR SLABS.  
THESE INTERFACING  
REQUIREMENTS MUST BE  
REVIEWED WITH THE LOCAL FIRE  
INSPECTOR BEFORE FINALISATION  
OF DETAILS.

KEY COMPONENT LEGEND

- (A) ALSECCO AIRTEC GLASS
- (B) VERTICAL ALUMINIUM T SECTION SUPPORT
- (C) ALUMINIUM BRACKET WITH ISOLATION PAD
- (D) 6803 RAIL PROFILE ANODISED BLACK
- (E) 50MM TOP CLIP WITH ADJUSTABLE SCREW
- (F) 50MM INTERMEDIATE/BASE CLIP
- (G) RESTRAINING CLIPS

(1) INDICATIVE FINISHES NOT BY TELLING Eg :

- INSULATION
- BREATHER MEMBRANE
- STEEL FRAMING SYSTEM
- INTERNAL FINISHES
- GLAZING SYSTEMS AND SEALS
- CLOSURE TRIMS / FLASHINGS

Rev.	Date	Comments



Telling Architectural Ltd  
7 The Dell  
Enterprise Drive  
Four Ashes  
Wolverhampton  
WV10 7DF  
Tel : 01902 797 700  
Fax : 01902 797 720

© Telling Architectural Ltd  
Do not scale from this drawing. If in doubt ask

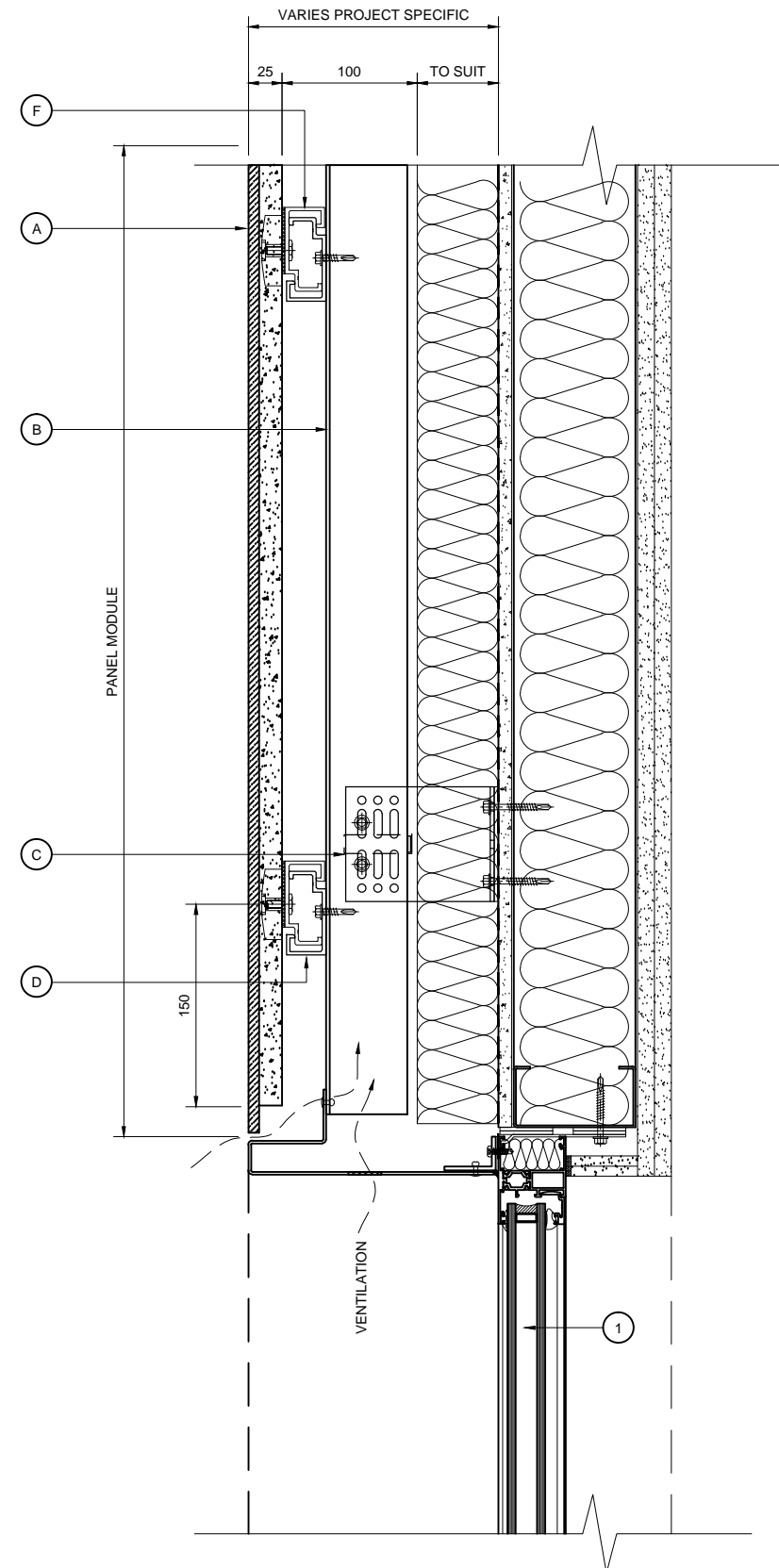
Material :  
**ALSECCO GLASS PANELS**

Series :  
**A SERIES  
HORIZONTAL RAIL &  
VERTICAL T TO SFS**

Drawing Title :  
**INTERNAL CORNER DETAIL**

Scale : <b>1 : 5</b>	Drawn : HB
	Date : FEB 15

Size	Drawing No.	Rev.
<b>A3</b>	<b>ALG-AD06</b>	



WINDOW HEAD DETAIL

NOTE:  
THESE STANDARD DETAILS DO NOT  
INCORPORATE FIRE BARRIER  
REQUIREMENTS AROUND WINDOW  
OPENINGS AND FLOOR SLABS.  
THESE INTERFACING  
REQUIREMENTS MUST BE  
REVIEWED WITH THE LOCAL FIRE  
INSPECTOR BEFORE FINALISATION  
OF DETAILS.

- KEY COMPONENT LEGEND**
- (A) ALSECCO AIRTEC GLASS
  - (B) VERTICAL ALUMINIUM T SECTION SUPPORT
  - (C) ALUMINIUM BRACKET WITH ISOLATION PAD
  - (D) 6803 RAIL PROFILE ANODISED BLACK
  - (E) 50MM TOP CLIP WITH ADJUSTABLE SCREW
  - (F) 50MM INTERMEDIATE/BASE CLIP
  - (G) RESTRAINING CLIPS
- 
- (1) INDICATIVE FINISHES NOT BY TELLING Eg:  
 INSULATION  
 BREATHER MEMBRANE  
 STEEL FRAMING SYSTEM  
 INTERNAL FINISHES  
 GLAZING SYSTEMS AND SEALS  
 CLOSURE TRIMS / FLASHINGS

Rev.	Date	Comments
------	------	----------



Telling Architectural Ltd  
 7 The Dell  
 Enterprise Drive  
 Four Ashes  
 Wolverhampton  
 WV10 7DF  
 Tel : 01902 797 700  
 Fax : 01902 797 720

© Telling Architectural Ltd  
 Do not scale from this drawing. If in doubt ask

Material :  
**ALSECCO GLASS PANELS**

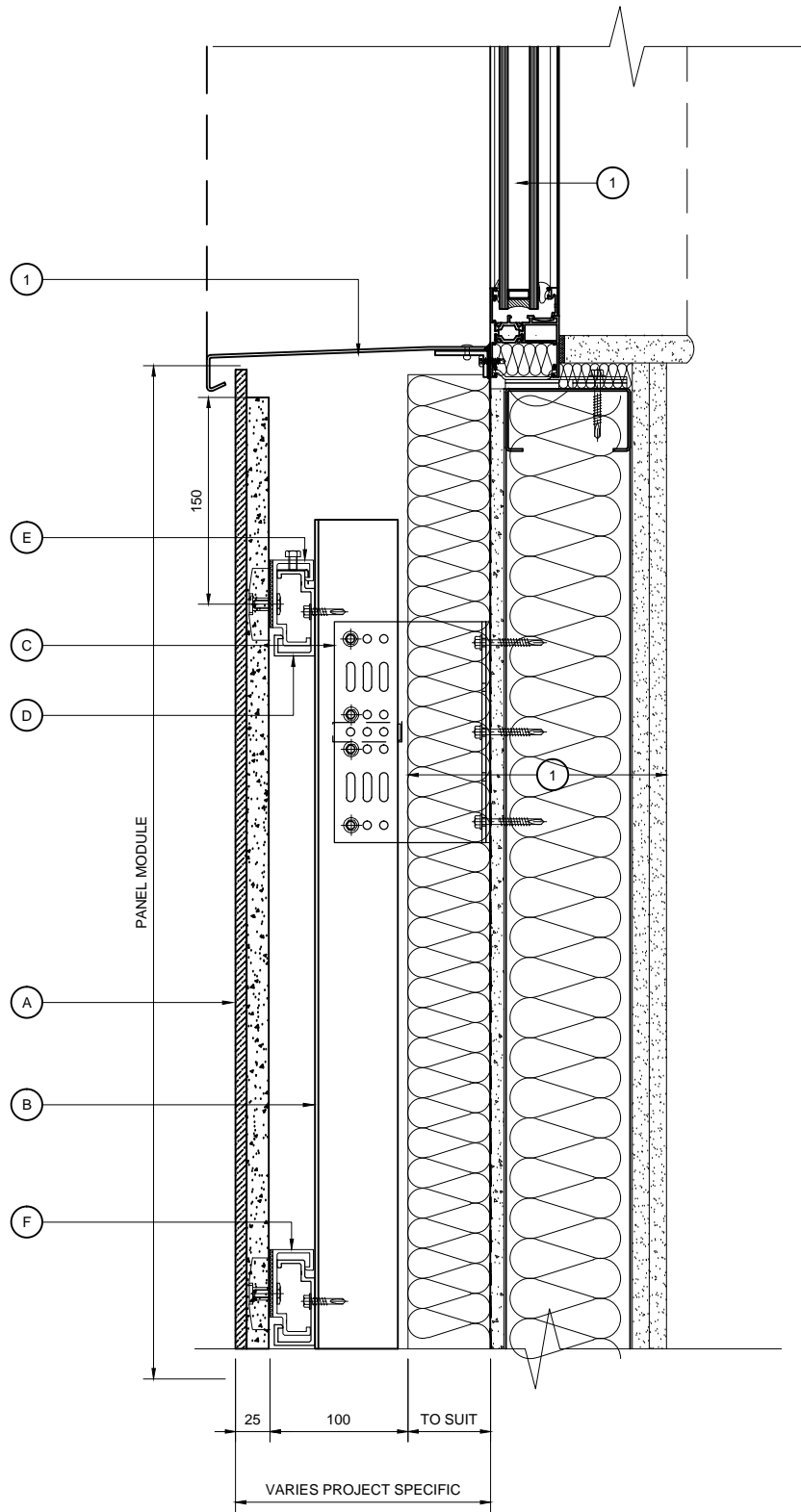
Series :  
**A SERIES  
 HORIZONTAL RAIL &  
 VERTICAL T TO SFS**

Drawing Title :  
**WINDOW HEAD DETAIL**

Scale : <b>1 : 5</b>	Drawn : HB
	Date : FEB 15

Size	Drawing No.	Rev.
A3	ALG-AD07	





WINDOW CILL DETAIL

**KEY COMPONENT LEGEND**

- (A) ALSECCO AIRTEC GLASS
- (B) VERTICAL ALUMINIUM T SECTION SUPPORT
- (C) ALUMINIUM BRACKET WITH ISOLATION PAD
- (D) 6803 RAIL PROFILE ANODISED BLACK
- (E) 50MM TOP CLIP WITH ADJUSTABLE SCREW
- (F) 50MM INTERMEDIATE/BASE CLIP
- (G) RESTRAINING CLIPS

(1) INDICATIVE FINISHES NOT BY TELLING Eg :

- INSULATION
- BREATHER MEMBRANE
- STEEL FRAMING SYSTEM
- INTERNAL FINISHES
- GLAZING SYSTEMS AND SEALS
- CLOSURE TRIMS / FLASHINGS

Rev.	Date	Comments



Telling Architectural Ltd  
 7 The Dell  
 Enterprise Drive  
 Four Ashes  
 Wolverhampton  
 WV10 7DF  
 Tel : 01902 797 700  
 Fax : 01902 797 720

© Telling Architectural Ltd  
 Do not scale from this drawing. If in doubt ask

Material :  
**ALSECCO GLASS PANELS**

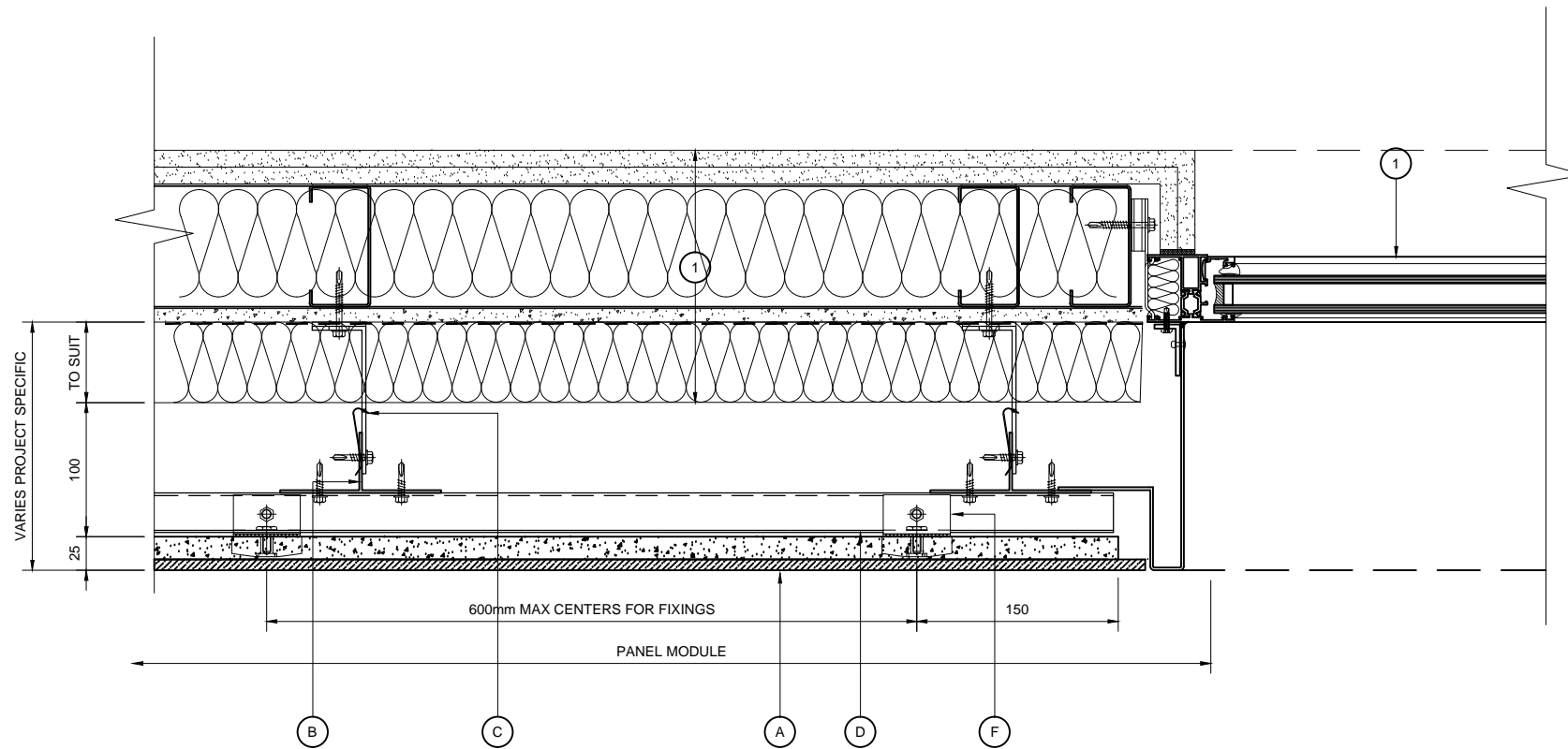
Series :  
**A SERIES  
 HORIZONTAL RAIL &  
 VERTICAL T TO SFS**

Drawing Title :  
**WINDOW CILL DETAIL**

Scale :  
**1 : 5**  
 Drawn : HB  
 Date : FEB 15

Size	Drawing No.	Rev.
A3	ALG-AD08	

NOTE:  
 THESE STANDARD DETAILS DO NOT  
 INCORPORATE FIRE BARRIER  
 REQUIREMENTS AROUND WINDOW  
 OPENINGS AND FLOOR SLABS.  
 THESE INTERFACING  
 REQUIREMENTS MUST BE  
 REVIEWED WITH THE LOCAL FIRE  
 INSPECTOR BEFORE FINALISATION  
 OF DETAILS.



**KEY COMPONENT LEGEND**

- (A) ALSECCO AIRTEC GLASS
- (B) VERTICAL ALUMINIUM T SECTION SUPPORT
- (C) ALUMINIUM BRACKET WITH ISOLATION PAD
- (D) 6803 RAIL PROFILE ANODISED BLACK
- (E) 50MM TOP CLIP WITH ADJUSTABLE SCREW
- (F) 50MM INTERMEDIATE/BASE CLIP
- (G) RESTRAINING CLIPS

- (1) INDICATIVE FINISHES NOT BY TELLING Eg :
- INSULATION
  - BREATHER MEMBRANE
  - STEEL FRAMING SYSTEM
  - INTERNAL FINISHES
  - GLAZING SYSTEMS AND SEALS
  - CLOSURE TRIMS / FLASHINGS

Rev.	Date	Comments



Telling Architectural Ltd  
 7 The Dell  
 Enterprise Drive  
 Four Ashes  
 Wolverhampton  
 WV10 7DF  
 Tel : 01902 797 700  
 Fax : 01902 797 720

© Telling Architectural Ltd  
 Do not scale from this drawing. If in doubt ask

Material :  
**ALSECCO GLASS PANELS**

Series :  
**A SERIES  
 HORIZONTAL RAIL &  
 VERTICAL T TO SFS**

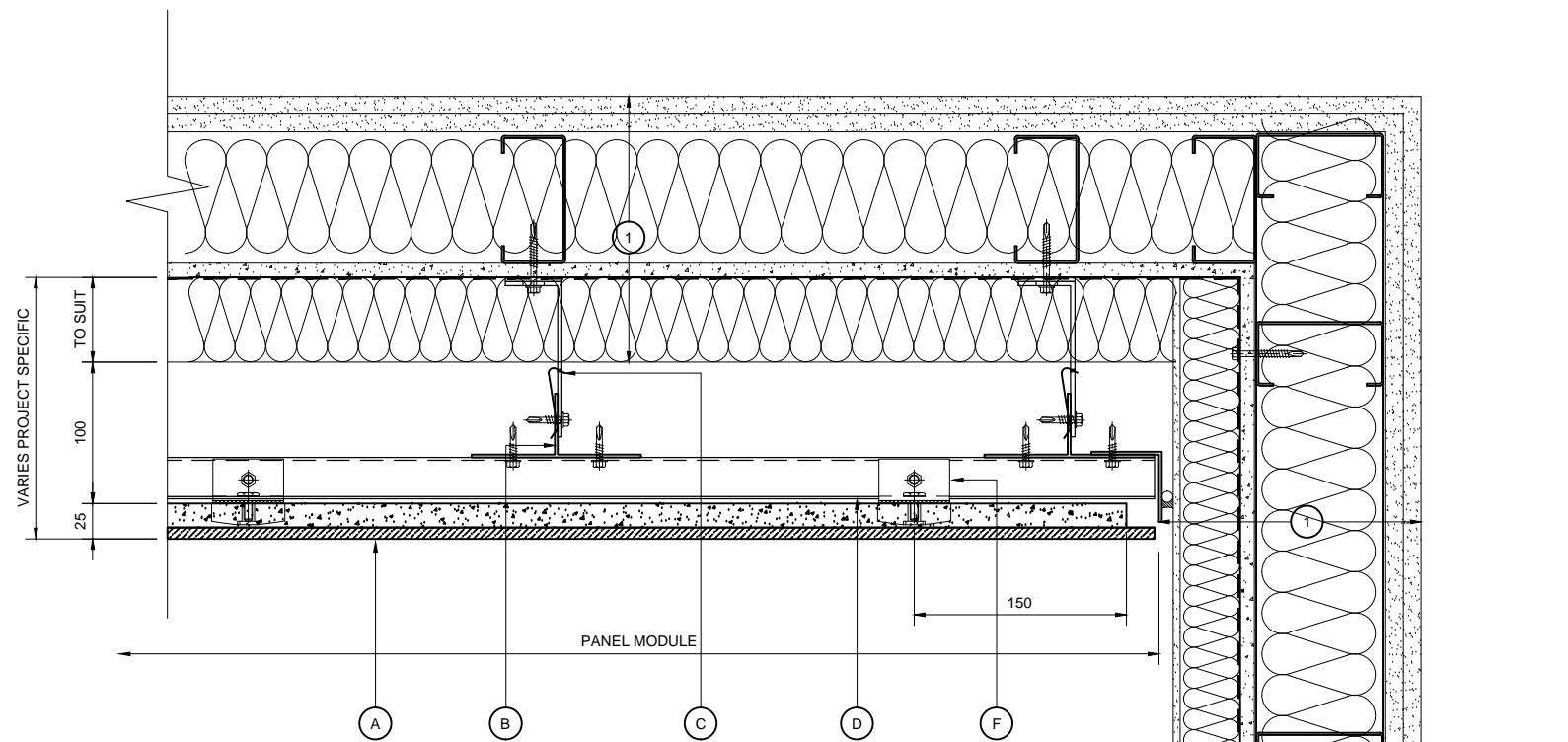
Drawing Title :  
**WINDOW JAMB DETAIL**

Scale :  
**1 : 5**  
 Drawn : HB  
 Date : FEB 15

Size	Drawing No.	Rev.
A3	ALG-AD09	

NOTE:  
 THESE STANDARD DETAILS DO NOT  
 INCORPORATE FIRE BARRIER  
 REQUIREMENTS AROUND WINDOW  
 OPENINGS AND FLOOR SLABS.  
 THESE INTERFACING  
 REQUIREMENTS MUST BE  
 REVIEWED WITH THE LOCAL FIRE  
 INSPECTOR BEFORE FINALISATION  
 OF DETAILS.

**WINDOW JAMB DETAIL**



**KEY COMPONENT LEGEND**

- (A) ALSECCO AIRTEC GLASS
- (B) VERTICAL ALUMINIUM T SECTION SUPPORT
- (C) ALUMINIUM BRACKET WITH ISOLATION PAD
- (D) 6803 RAIL PROFILE ANODISED BLACK
- (E) 50MM TOP CLIP WITH ADJUSTABLE SCREW
- (F) 50MM INTERMEDIATE/BASE CLIP
- (G) RESTRAINING CLIPS

(1) INDICATIVE FINISHES NOT BY TELLING Eg:

- INSULATION
- BREATHER MEMBRANE
- STEEL FRAMING SYSTEM
- INTERNAL FINISHES
- GLAZING SYSTEMS AND SEALS
- CLOSURE TRIMS / FLASHINGS

Rev.	Date	Comments



Telling Architectural Ltd  
 7 The Dell  
 Enterprise Drive  
 Four Ashes  
 Wolverhampton  
 WV10 7DF  
 Tel : 01902 797 700  
 Fax : 01902 797 720

© Telling Architectural Ltd  
 Do not scale from this drawing. If in doubt ask

Material :  
**ALSECCO GLASS PANELS**

Series :  
**A SERIES  
 HORIZONTAL RAIL &  
 VERTICAL T TO SFS**

Drawing Title :  
**CLADDING ABUTMENT  
 DETAIL**

Scale :  
**1 : 5**  
 Drawn : HB  
 Date : FEB 15

Size	Drawing No.	Rev.
A3	ALG-AD10	

NOTE:  
 THESE STANDARD DETAILS DO NOT  
 INCORPORATE FIRE BARRIER  
 REQUIREMENTS AROUND WINDOW  
 OPENINGS AND FLOOR SLABS.  
 THESE INTERFACING  
 REQUIREMENTS MUST BE  
 REVIEWED WITH THE LOCAL FIRE  
 INSPECTOR BEFORE FINALISATION  
 OF DETAILS.

**CLADDING ABUTMENT DETAIL**