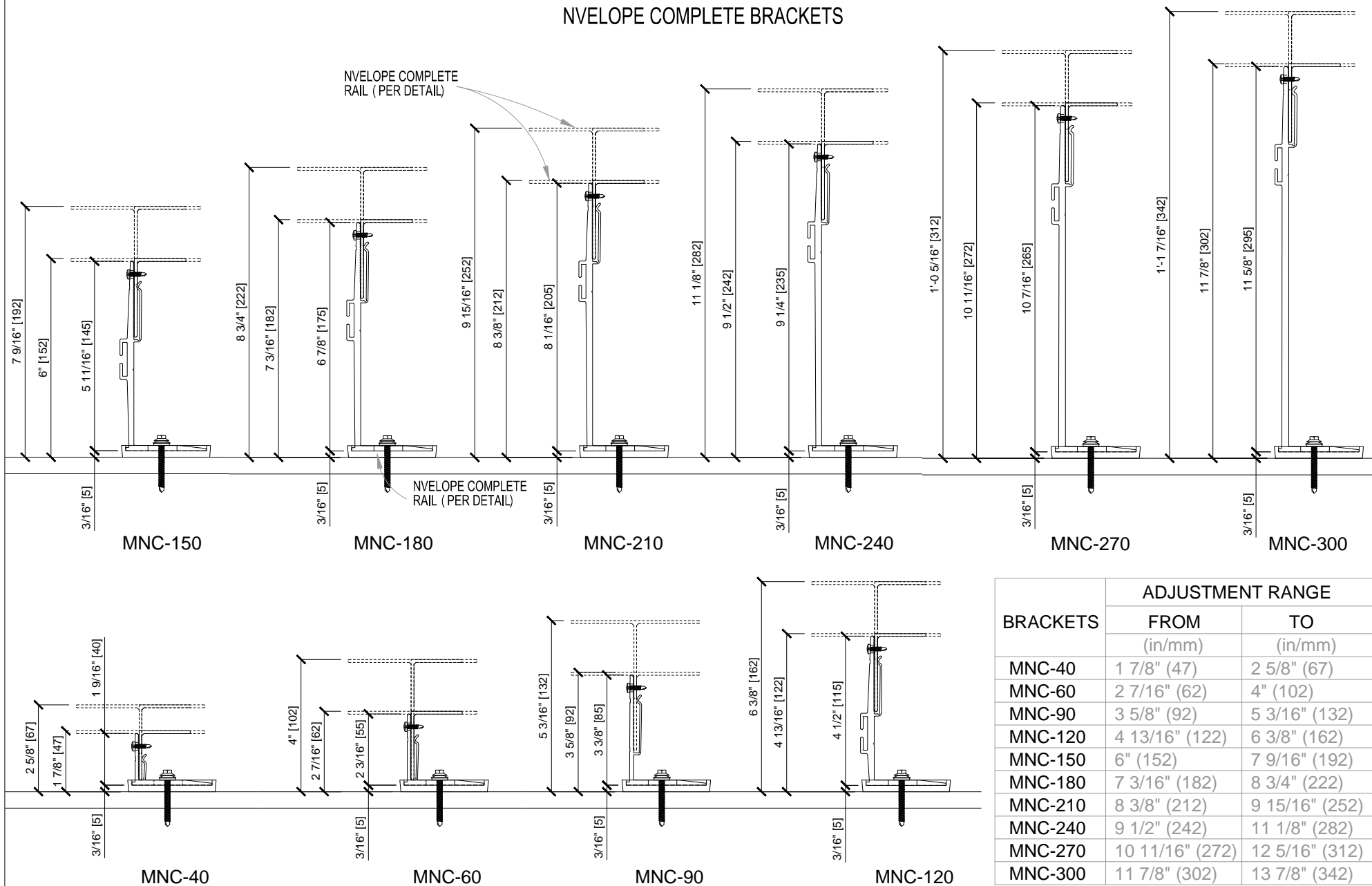


NVELOPE COMPLETE BRACKETS



PROJECT SPECIFIC ENGINEERING IS REQUIRED TO ADDRESS WIND LOAD, CLADDING WEIGHT/TYPE, PROJECTION, SPACING, ETC). CONTACT NVELOPE FOR ADDITIONAL INFO. GUIDE DETAILS BY NVELOPE ARE PROVIDED FOR GENERAL REFERENCE ONLY AND REPRESENT TYPICAL CONDITIONS FOR OUR CLADDING ATTACHMENT SYSTEMS. ALL IMPLIED WARRANTIES INCLUDING APPROPRIATENESS FOR A SPECIFIC PURPOSE ARE EXPLICITLY EXCLUDED.

System:

NVELOPE USA, LLC.
ACM

NvelopeUSA, LLC.
1546 NW 56th Street,
Seattle WA 98107
T: 1 (877) 491-3100
info@nvelopeusa.com
www.nvelopeusa.com



NO.	DESCRIPTION	DATE	INIT.
1	Client Review	03/24/16	rps
2	Client Updates	03/29/16	rps
3	Client Updates	04/06/16	rps
4	----	----	int

info@NvelopeUSA.com

http://www.nvelope.us

Sheet Title:
DET

System ID:
NH2-ACM

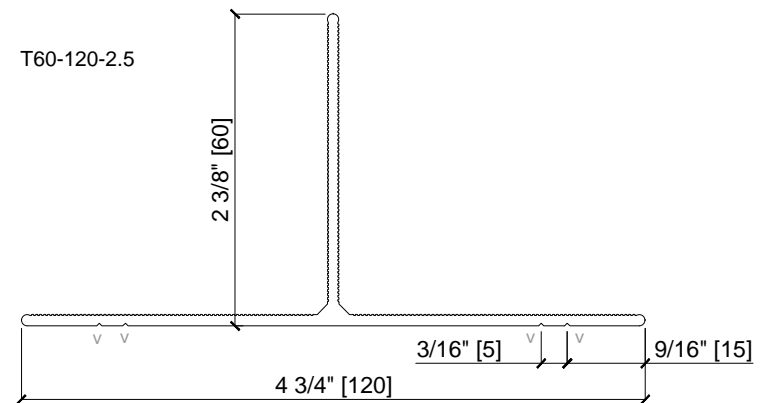
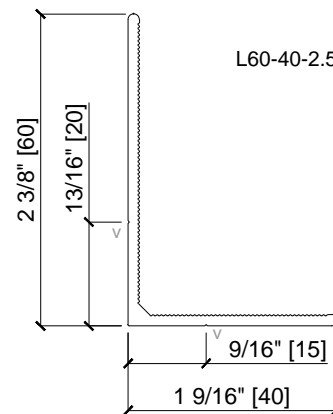
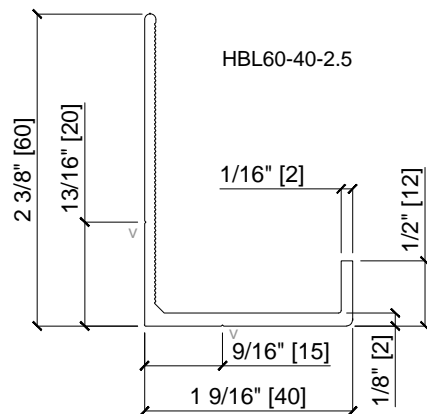
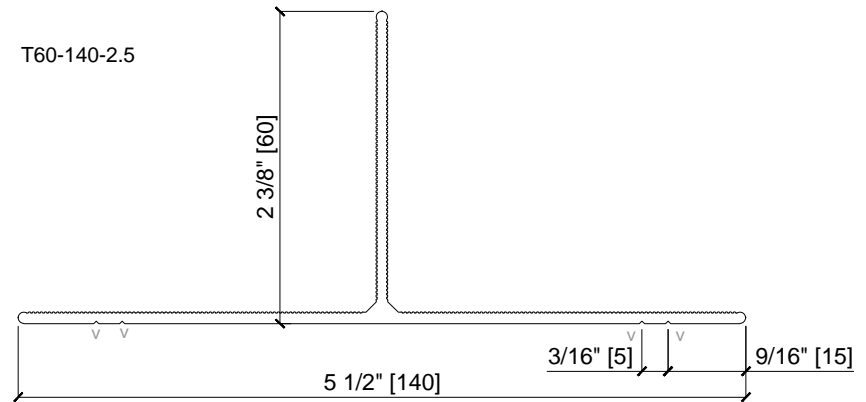
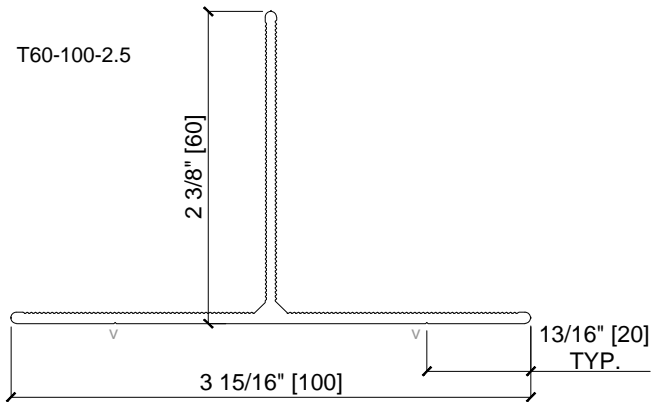
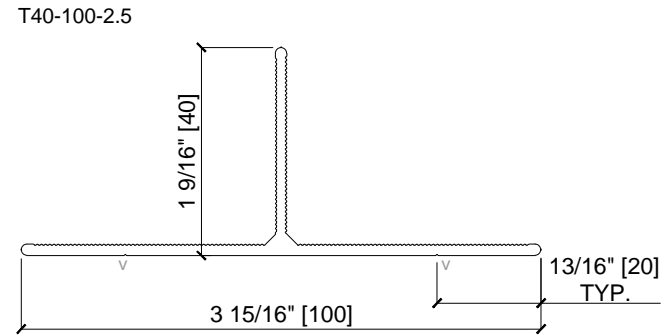
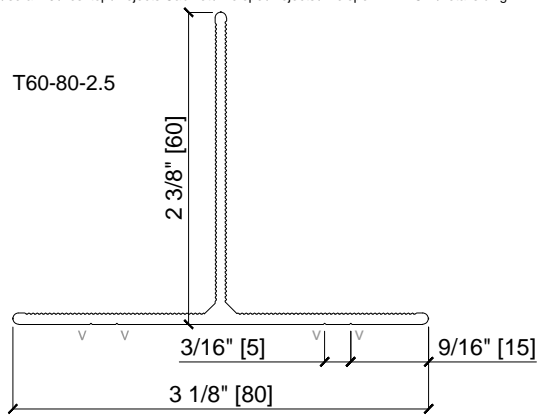
Scale:
NTS

Sheet:
S01



NVELOPE COMPLETE STANDARD "T" & "L" RAILS

v = 0.25 x 90° VEE GROOVE



PROJECT SPECIFIC ENGINEERING IS REQUIRED TO ADDRESS WIND LOAD, CLADDING WEIGHT/TYPE, PROJECTION, SPACING, ETC). CONTACT NVELOPE FOR ADDITIONAL INFO. GUIDE DETAILS BY NVELOPE ARE PROVIDED FOR GENERAL REFERENCE ONLY AND REPRESENT TYPICAL CONDITIONS FOR OUR CLADDING ATTACHMENT SYSTEMS. ALL IMPLIED WARRANTIES INCLUDING APPROPRIATENESS FOR A SPECIFIC PURPOSE ARE EXPLICITLY EXCLUDED.

System:

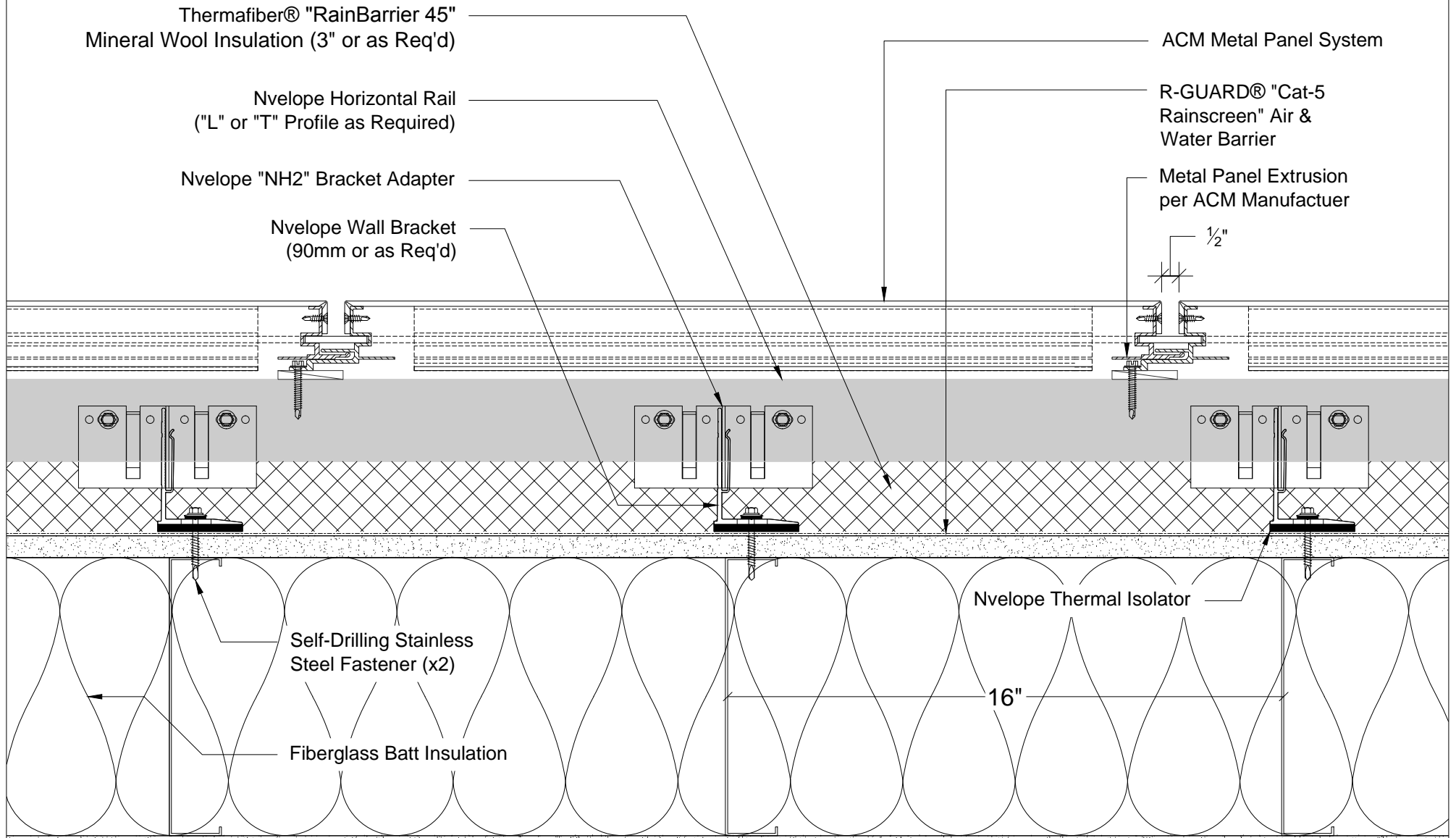
NVELOPE USA, LLC.
ACM

NvelopeUSA, LLC.
1546 NW 56th Street,
Seattle WA 98107
T: 1 (877) 491-3100
info@nvelopeusa.com
www.nvelopeusa.com



NO.	DESCRIPTION	DATE	INIT.
1	Client Review	03/24/16	rps
2	Client Updates	03/29/16	rps
3	Client Updates	04/06/16	rps
4	----	----	int

info@NvelopeUSA.com<http://www.nvelope.us>Sheet Title:
DETSystem ID:
NH2-ACMScale:
NTSSheet:
S02



01A Wall Assembly - ACM Metal Panel at Steel Stud Framing
DET

PROJECT SPECIFIC ENGINEERING IS REQUIRED TO ADDRESS WIND LOAD, CLADDING WEIGHT/TYPE, PROJECTION, SPACING, ETC). CONTACT NVELOPE FOR ADDITIONAL INFO. GUIDE DETAILS BY NVELOPE ARE PROVIDED FOR GENERAL REFERENCE ONLY AND REPRESENT TYPICAL CONDITIONS FOR OUR CLADDING ATTACHMENT SYSTEMS. ALL IMPLIED WARRANTIES INCLUDING APPROPRIATENESS FOR A SPECIFIC PURPOSE ARE EXPLICITLY EXCLUDED.

System:
NVELOPE USA, LLC.
ACM

NvelopeUSA, LLC.
1546 NW 56th Street,
Seattle WA 98107
T: 1 (877) 491-3100
info@nvelopeusa.com
www.nvelopeusa.com



NO.	DESCRIPTION	DATE	INIT.
1	Client Review	03/24/16	rps
2	Client Updates	03/29/16	rps
3	Client Updates	04/06/16	rps
4	----	----	int

info@NvelopeUSA.com
http://www.nvelope.us

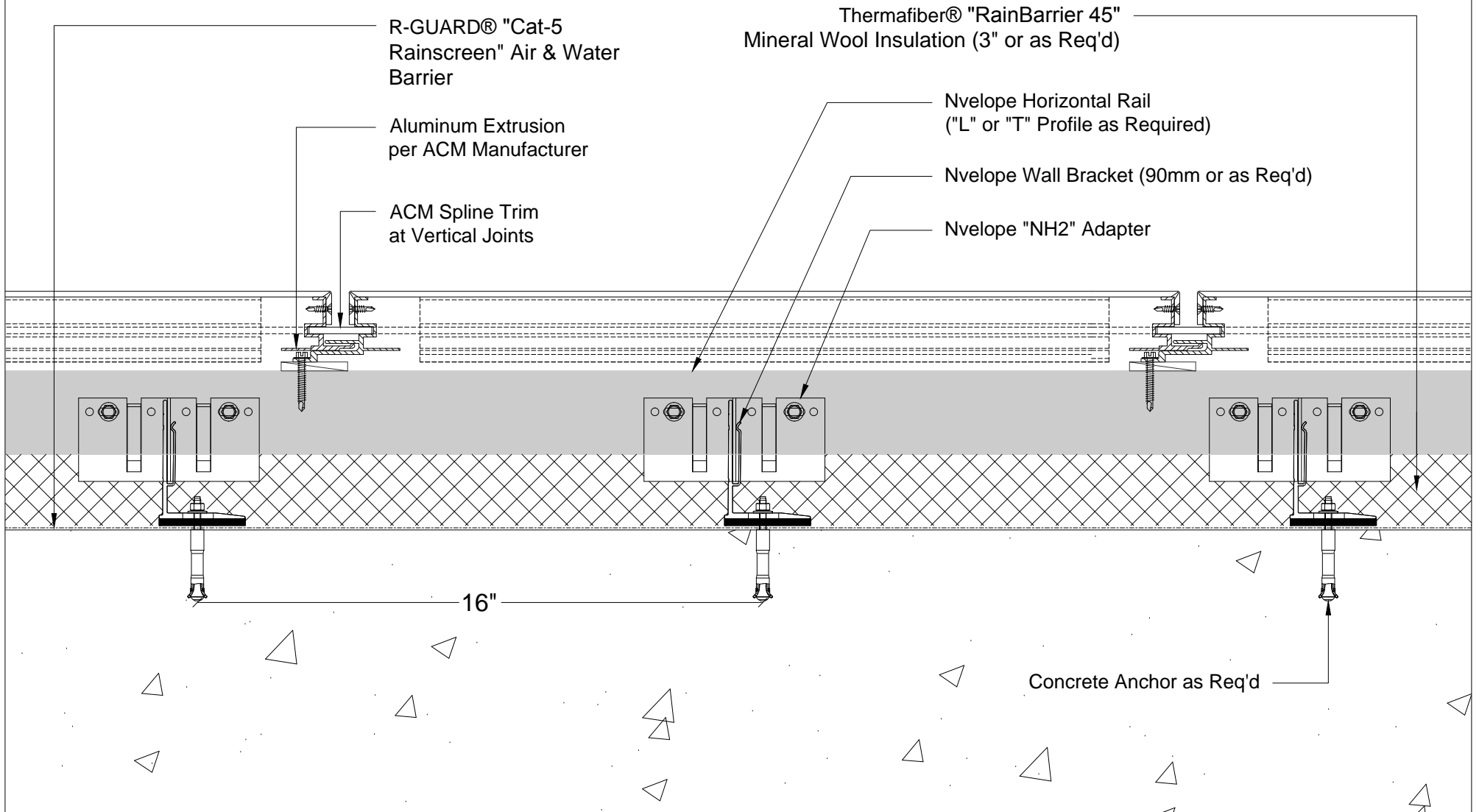
Sheet Title:
DET

System ID:
NH2-ACM

Scale:
3" = 1'-0"

Sheet:
01A





01B Wall Assembly - ACM Metal Panel at Structural Concrete

DET

PROJECT SPECIFIC ENGINEERING IS REQUIRED TO ADDRESS WIND LOAD, CLADDING WEIGHT/TYPE, PROJECTION, SPACING, ETC). CONTACT NVELOPE FOR ADDITIONAL INFO. GUIDE DETAILS BY NVELOPE ARE PROVIDED FOR GENERAL REFERENCE ONLY AND REPRESENT TYPICAL CONDITIONS FOR OUR CLADDING ATTACHMENT SYSTEMS. ALL IMPLIED WARRANTIES INCLUDING APPROPRIATENESS FOR A SPECIFIC PURPOSE ARE EXPLICITLY EXCLUDED.

System:

NVELOPE USA, LLC.
ACM

NvelopeUSA, LLC.
1546 NW 56th Street,
Seattle WA 98107
T: 1 (877) 491-3100
info@nvelopeusa.com
www.nvelopeusa.com



NO.	DESCRIPTION	DATE	INIT.
1	Client Review	03/24/16	rps
2	Client Updates	03/29/16	rps
3	Client Updates	04/06/16	rps
4	----	-----	int

info@NvelopeUSA.com
<http://www.nvelope.us>

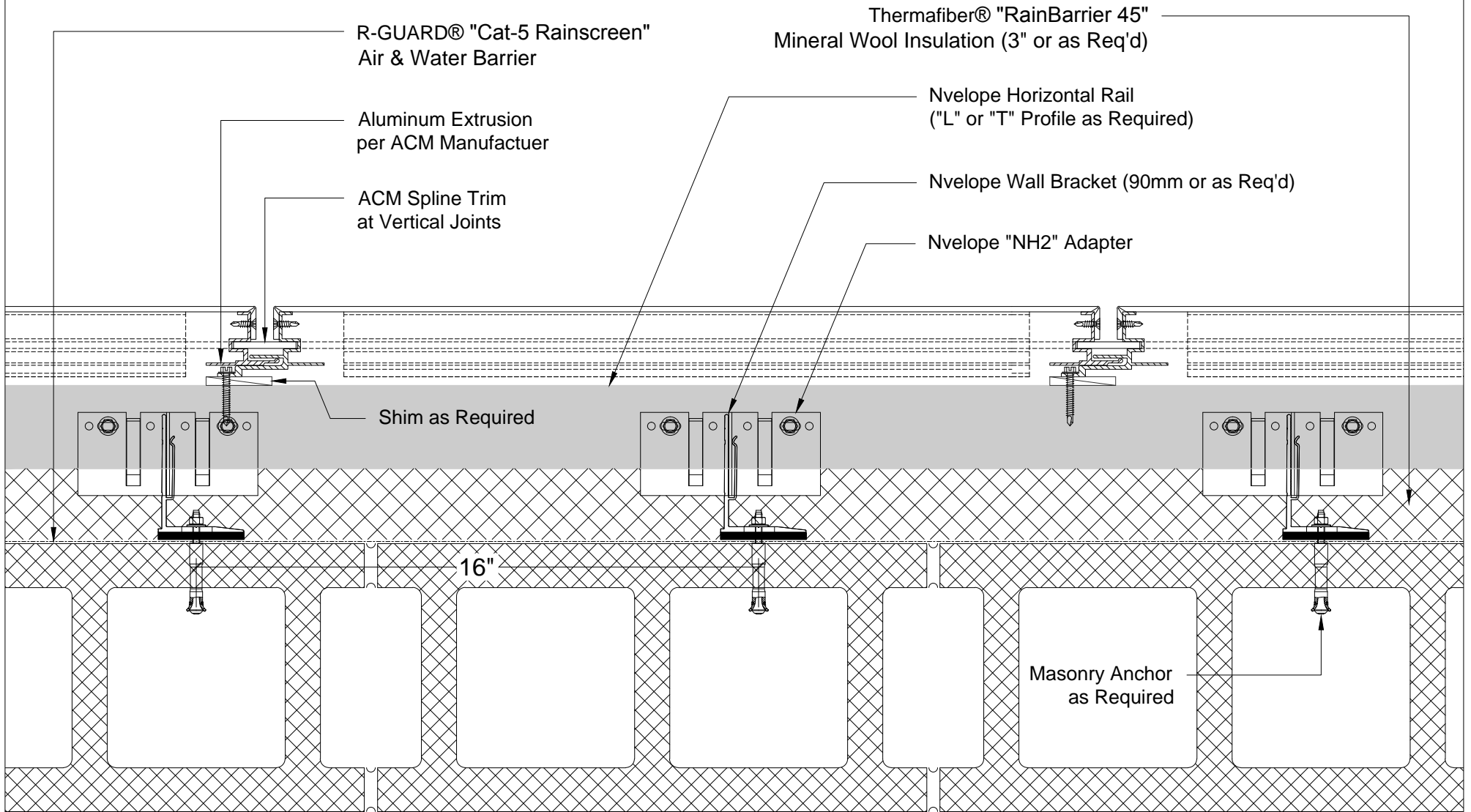
Sheet Title:
DET

System ID:
NH2-ACM

Scale:
3" = 1'-0"

Sheet:
01B





01C
DET

Wall Assembly - ACM Metal Panel at Structural CMU

PROJECT SPECIFIC ENGINEERING IS REQUIRED TO ADDRESS WIND LOAD, CLADDING WEIGHT/TYPE, PROJECTION, SPACING, ETC). CONTACT NVELOPE FOR ADDITIONAL INFO. GUIDE DETAILS BY NVELOPE ARE PROVIDED FOR GENERAL REFERENCE ONLY AND REPRESENT TYPICAL CONDITIONS FOR OUR CLADDING ATTACHMENT SYSTEMS. ALL IMPLIED WARRANTIES INCLUDING APPROPRIATENESS FOR A SPECIFIC PURPOSE ARE EXPLICITLY EXCLUDED.

System:
NVELOPE USA, LLC.
ACM

NvelopeUSA, LLC.
1546 NW 56th Street,
Seattle WA 98107
T: 1 (877) 491-3100
info@nvelopeusa.com
www.nvelopeusa.com



NO.	DESCRIPTION	DATE	INIT.
1	Client Review	03/24/16	rps
2	Client Updates	03/29/16	rps
3	Client Updates	04/06/16	rps
4	----	-----	int

info@NvelopeUSA.com
http://www.nvelope.us

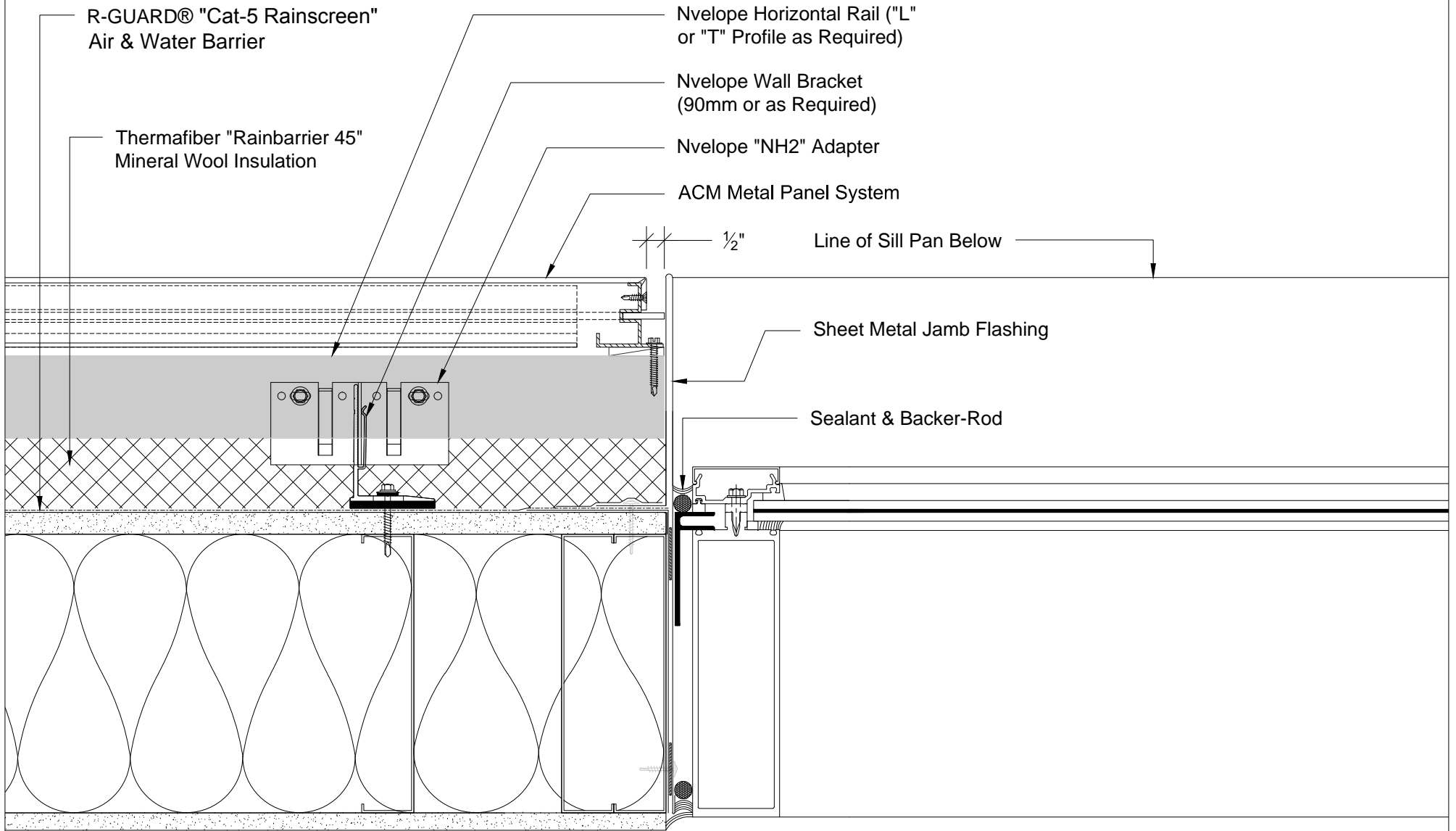
Sheet Title:
DET

System ID:
NH2-ACM

Scale:
3" = 1'-0"

Sheet:
01C





02 Window Jamb at ACM Metal Panel

DET

PROJECT SPECIFIC ENGINEERING IS REQUIRED TO ADDRESS WIND LOAD, CLADDING WEIGHT/TYPE, PROJECTION, SPACING, ETC). CONTACT NVELOPE FOR ADDITIONAL INFO. GUIDE DETAILS BY NVELOPE ARE PROVIDED FOR GENERAL REFERENCE ONLY AND REPRESENT TYPICAL CONDITIONS FOR OUR CLADDING ATTACHMENT SYSTEMS. ALL IMPLIED WARRANTIES INCLUDING APPROPRIATENESS FOR A SPECIFIC PURPOSE ARE EXPLICITLY EXCLUDED.

System:

NVELOPE USA, LLC.
ACM

NvelopeUSA, LLC.
1546 NW 56th Street,
Seattle WA 98107
T: 1 (877) 491-3100
info@nvelopeusa.com
www.nvelopeusa.com



NO.	DESCRIPTION	DATE	INIT.
1	Client Review	03/24/16	rps
2	Client Updates	03/29/16	rps
3	Client Updates	04/06/16	rps
4	----	----	int

info@NvelopeUSA.com
http://www.nvelope.us

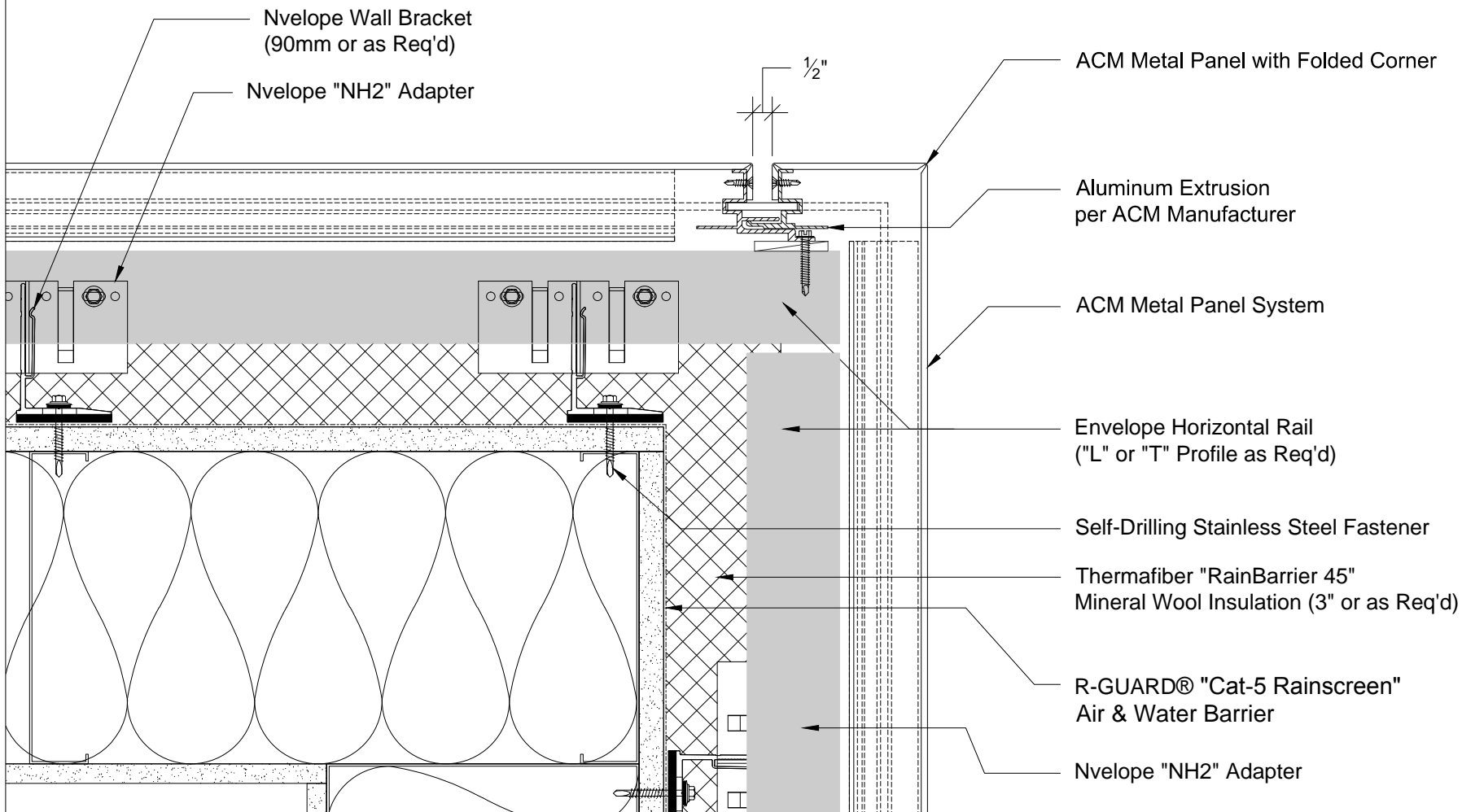
Sheet Title:
DET

System ID:
NH2-ACM

Scale:
3" = 1'-0"

Sheet:
02





03 Outside Corner at ACM Metal Panel
DET

PROJECT SPECIFIC ENGINEERING IS REQUIRED TO ADDRESS WIND LOAD, CLADDING WEIGHT/TYPE, PROJECTION, SPACING, ETC). CONTACT NVELOPE FOR ADDITIONAL INFO. GUIDE DETAILS BY NVELOPE ARE PROVIDED FOR GENERAL REFERENCE ONLY AND REPRESENT TYPICAL CONDITIONS FOR OUR CLADDING ATTACHMENT SYSTEMS. ALL IMPLIED WARRANTIES INCLUDING APPROPRIATENESS FOR A SPECIFIC PURPOSE ARE EXPLICITLY EXCLUDED.

System:
NVELOPE USA, LLC.
ACM

NvelopeUSA, LLC.
1546 NW 56th Street,
Seattle WA 98107
T: 1 (877) 491-3100
info@nvelopeusa.com
www.nvelopeusa.com



NO.	DESCRIPTION	DATE	INT.
1	Client Review	03/24/16	rps
2	Client Updates	03/29/16	rps
3	Client Updates	04/06/16	rps
4	----	----	int

info@NvelopeUSA.com
http://www.nvelope.us

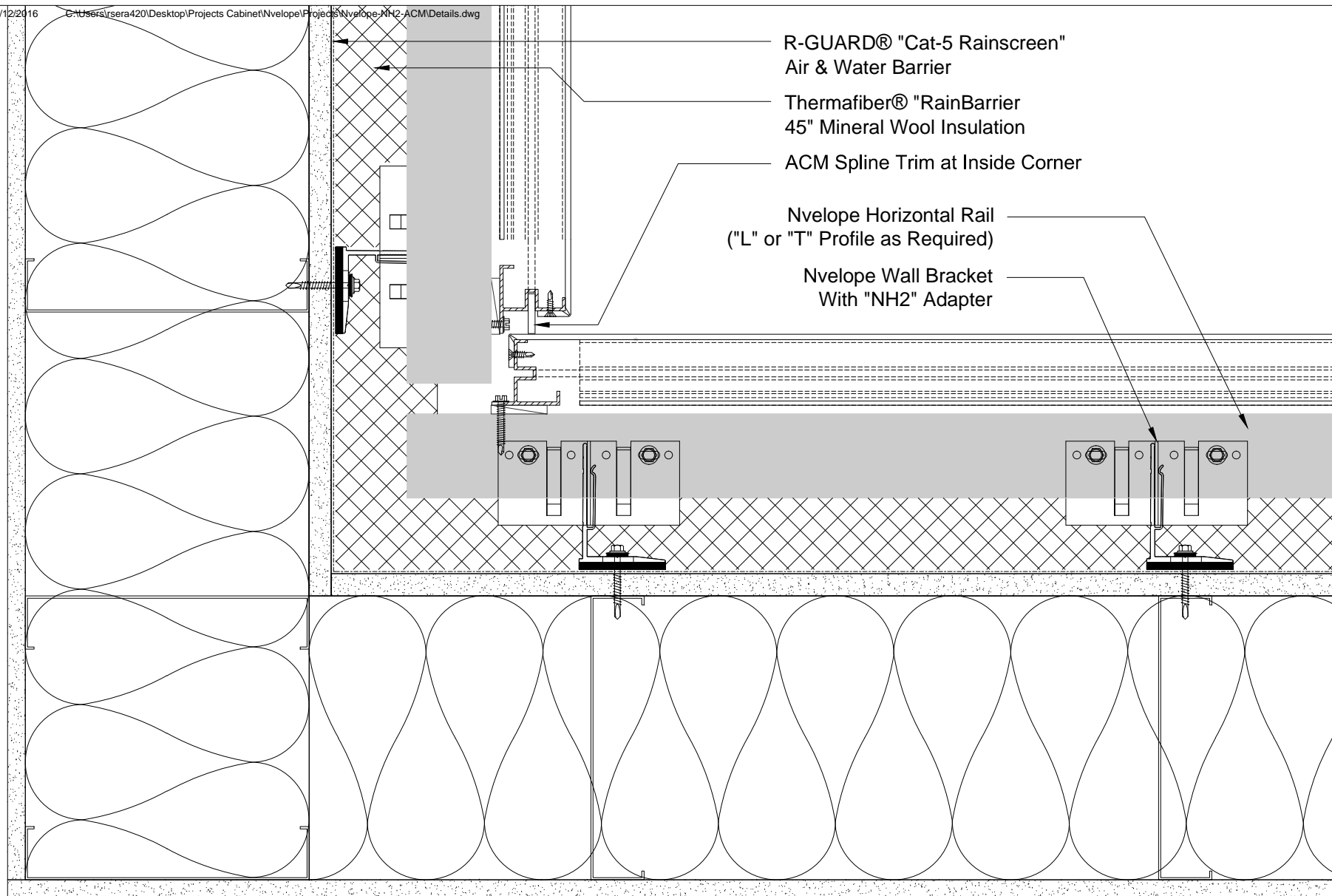
Sheet Title:
DET

System ID:
NH2-ACM

Scale:
3" = 1'-0"

Sheet:
03





04

Inside Corner at ACM Metal Panel

DET

PROJECT SPECIFIC ENGINEERING IS REQUIRED TO ADDRESS WIND LOAD, CLADDING WEIGHT/TYPE, PROJECTION, SPACING, ETC). CONTACT NVELOPE FOR ADDITIONAL INFO. GUIDE DETAILS BY NVELOPE ARE PROVIDED FOR GENERAL REFERENCE ONLY AND REPRESENT TYPICAL CONDITIONS FOR OUR CLADDING ATTACHMENT SYSTEMS. ALL IMPLIED WARRANTIES INCLUDING APPROPRIATENESS FOR A SPECIFIC PURPOSE ARE EXPLICITLY EXCLUDED.

System:

NVELOPE USA, LLC.
ACM

NvelopeUSA, LLC.
1546 NW 56th Street,
Seattle WA 98107
T: 1 (877) 491-3100
info@nvelopeusa.com
www.nvelopeusa.com



NO.	DESCRIPTION	DATE	INIT.
1	Client Review	03/24/16	rps
2	Client Updates	03/29/16	rps
3	Client Updates	04/06/16	rps
4	----	----	int

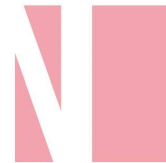
info@NvelopeUSA.com
<http://www.nvelope.us>

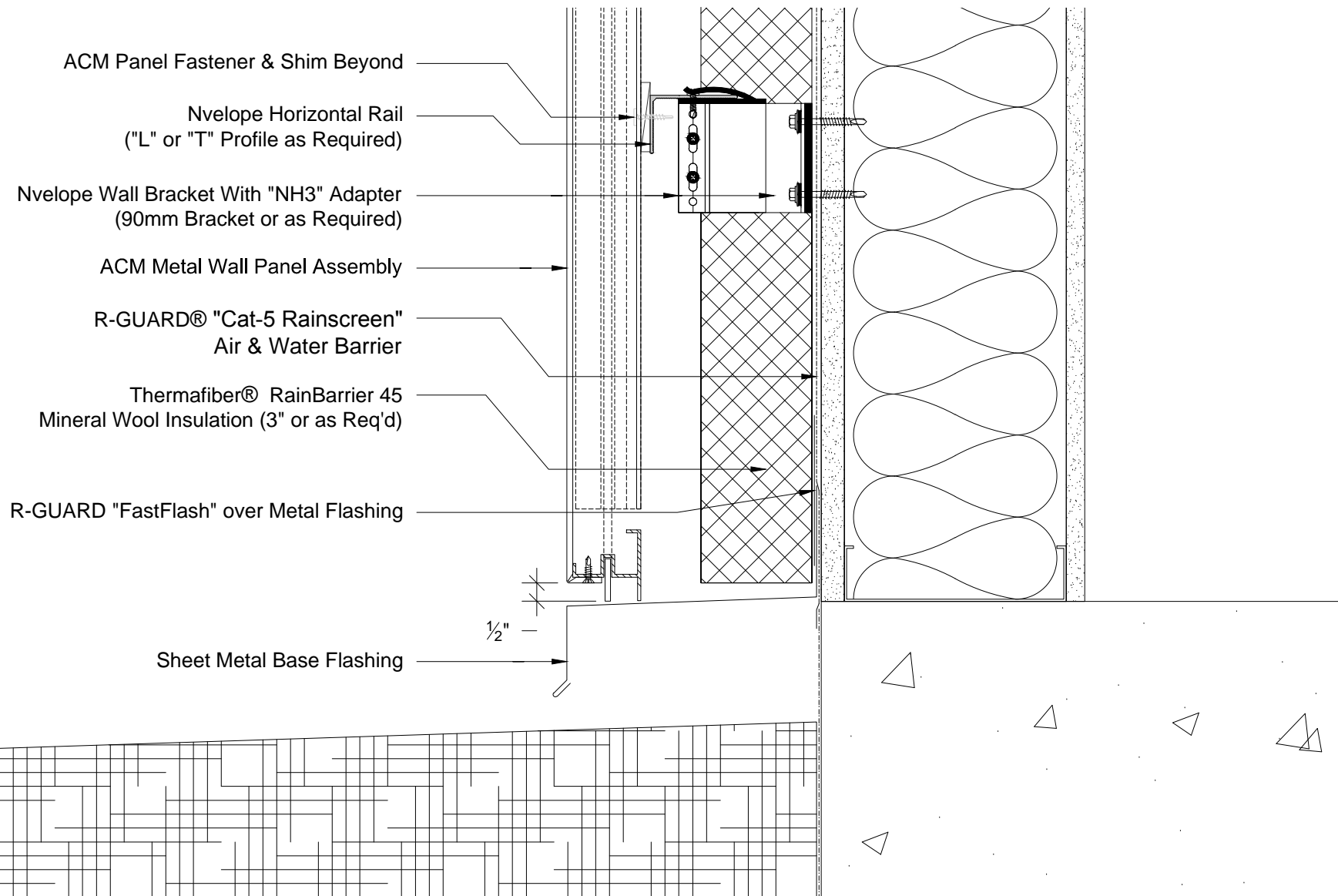
Sheet Title:
DET

System ID:
NH2-ACM

Scale:
3" = 1'-0"

Sheet:
04





05 Base Detail at ACM Metal Panel
DET

PROJECT SPECIFIC ENGINEERING IS REQUIRED TO ADDRESS WIND LOAD, CLADDING WEIGHT/TYPE, PROJECTION, SPACING, ETC). CONTACT NVELOPE FOR ADDITIONAL INFO. GUIDE DETAILS BY NVELOPE ARE PROVIDED FOR GENERAL REFERENCE ONLY AND REPRESENT TYPICAL CONDITIONS FOR OUR CLADDING ATTACHMENT SYSTEMS. ALL IMPLIED WARRANTIES INCLUDING APPROPRIATENESS FOR A SPECIFIC PURPOSE ARE EXPLICITLY EXCLUDED.

System:
NVELOPE USA, LLC.
ACM

NvelopeUSA, LLC.
1546 NW 56th Street,
Seattle WA 98107
T: 1 (877) 491-3100
info@nvelopeusa.com
www.nvelopeusa.com



NO.	DESCRIPTION	DATE	INIT.
1	Client Review	03/24/16	rps
2	Client Updates	03/29/16	rps
3	Client Updates	04/06/16	rps
4	----	----	int

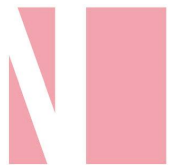
info@NvelopeUSA.com
<http://www.nvelope.us>

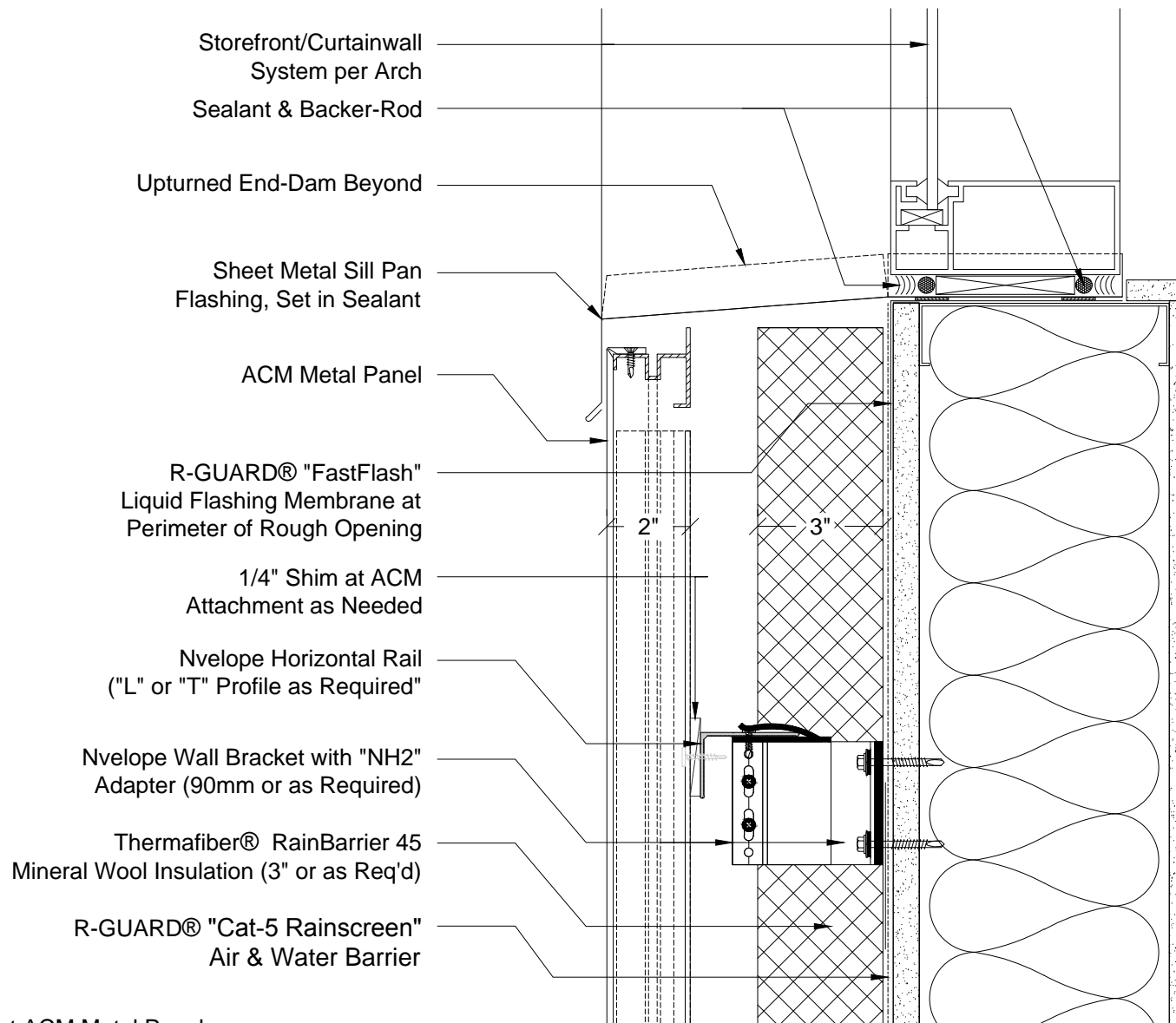
Sheet Title:
DET

System ID:
NH2-ACM

Scale:
3" = 1'-0"

Sheet:
05





06 Window Sill at ACM Metal Panel

DET

PROJECT SPECIFIC ENGINEERING IS REQUIRED TO ADDRESS WIND LOAD, CLADDING WEIGHT/TYPE, PROJECTION, SPACING, ETC). CONTACT NVELOPE FOR ADDITIONAL INFO. GUIDE DETAILS BY NVELOPE ARE PROVIDED FOR GENERAL REFERENCE ONLY AND REPRESENT TYPICAL CONDITIONS FOR OUR CLADDING ATTACHMENT SYSTEMS. ALL IMPLIED WARRANTIES INCLUDING APPROPRIATENESS FOR A SPECIFIC PURPOSE ARE EXPLICITLY EXCLUDED.

System:
NVELOPE USA, LLC.
ACM

NvelopeUSA, LLC.
1546 NW 56th Street,
Seattle WA 98107
T: 1 (877) 491-3100
info@nvelopeusa.com
www.nvelopeusa.com



NO.	DESCRIPTION	DATE	INIT.
1	Client Review	03/24/16	rps
2	Client Updates	03/29/16	rps
3	Client Updates	04/06/16	rps
4	----	----	int

info@NvelopeUSA.com
<http://www.nvelope.us>

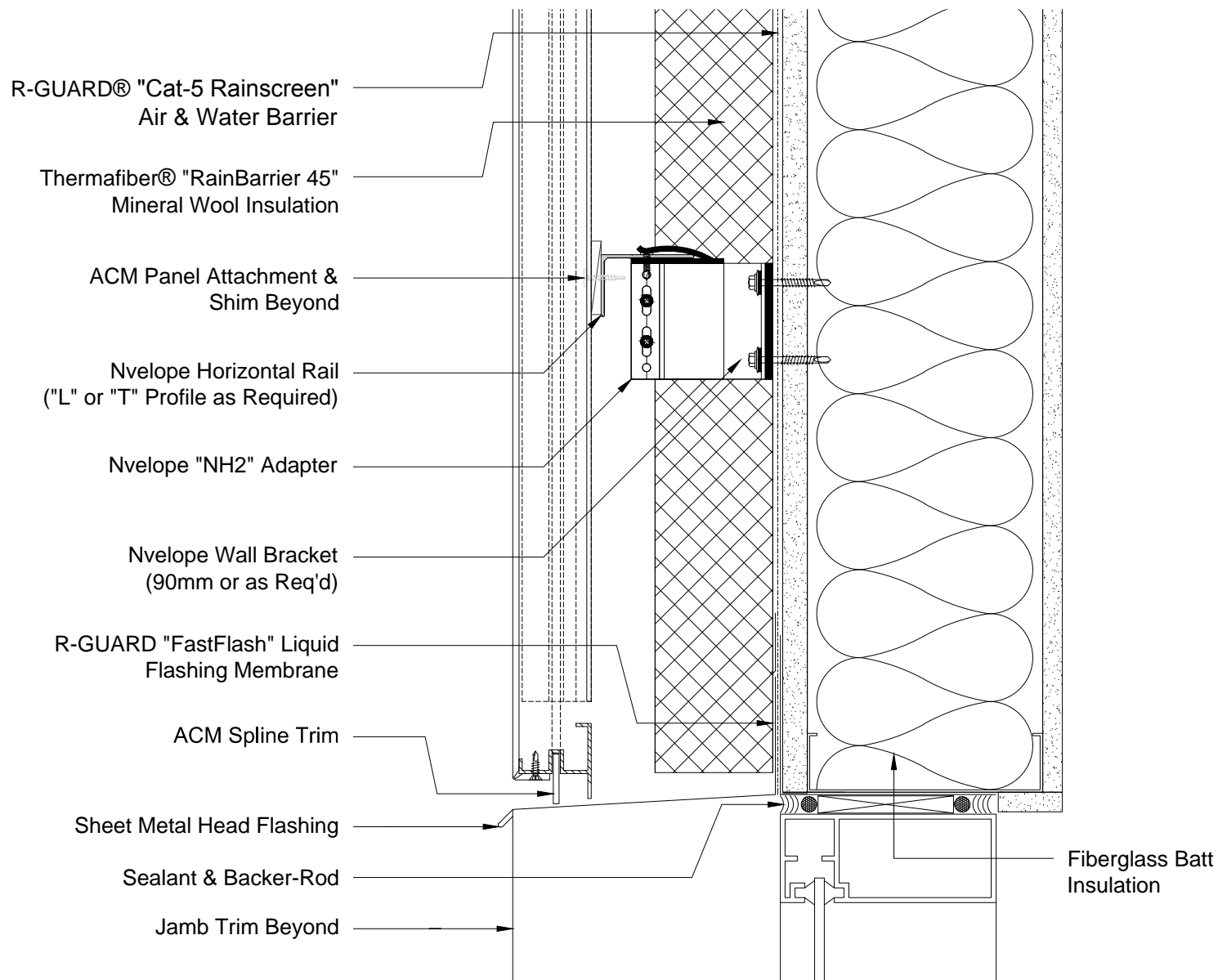
Sheet Title:
DET

System ID:
NH2-ACM

Scale:
3" = 1'-0"

Sheet:
06





07 Window Head at ACM Metal Panel

DET

PROJECT SPECIFIC ENGINEERING IS REQUIRED TO ADDRESS WIND LOAD, CLADDING WEIGHT/TYPE, PROJECTION, SPACING, ETC). CONTACT NVELOPE FOR ADDITIONAL INFO. GUIDE DETAILS BY NVELOPE ARE PROVIDED FOR GENERAL REFERENCE ONLY AND REPRESENT TYPICAL CONDITIONS FOR OUR CLADDING ATTACHMENT SYSTEMS. ALL IMPLIED WARRANTIES INCLUDING APPROPRIATENESS FOR A SPECIFIC PURPOSE ARE EXPLICITLY EXCLUDED.

System:

NVELOPE USA, LLC.
ACM

NvelopeUSA, LLC.
1546 NW 56th Street,
Seattle WA 98107
T: 1 (877) 491-3100
info@nvelopeusa.com
www.nvelopeusa.com



NO.	DESCRIPTION	DATE	INIT.
1	Client Review	03/24/16	rps
2	Client Updates	03/29/16	rps
3	Client Updates	04/06/16	rps
4	----	----	int

info@NvelopeUSA.com
<http://www.nvelope.us>

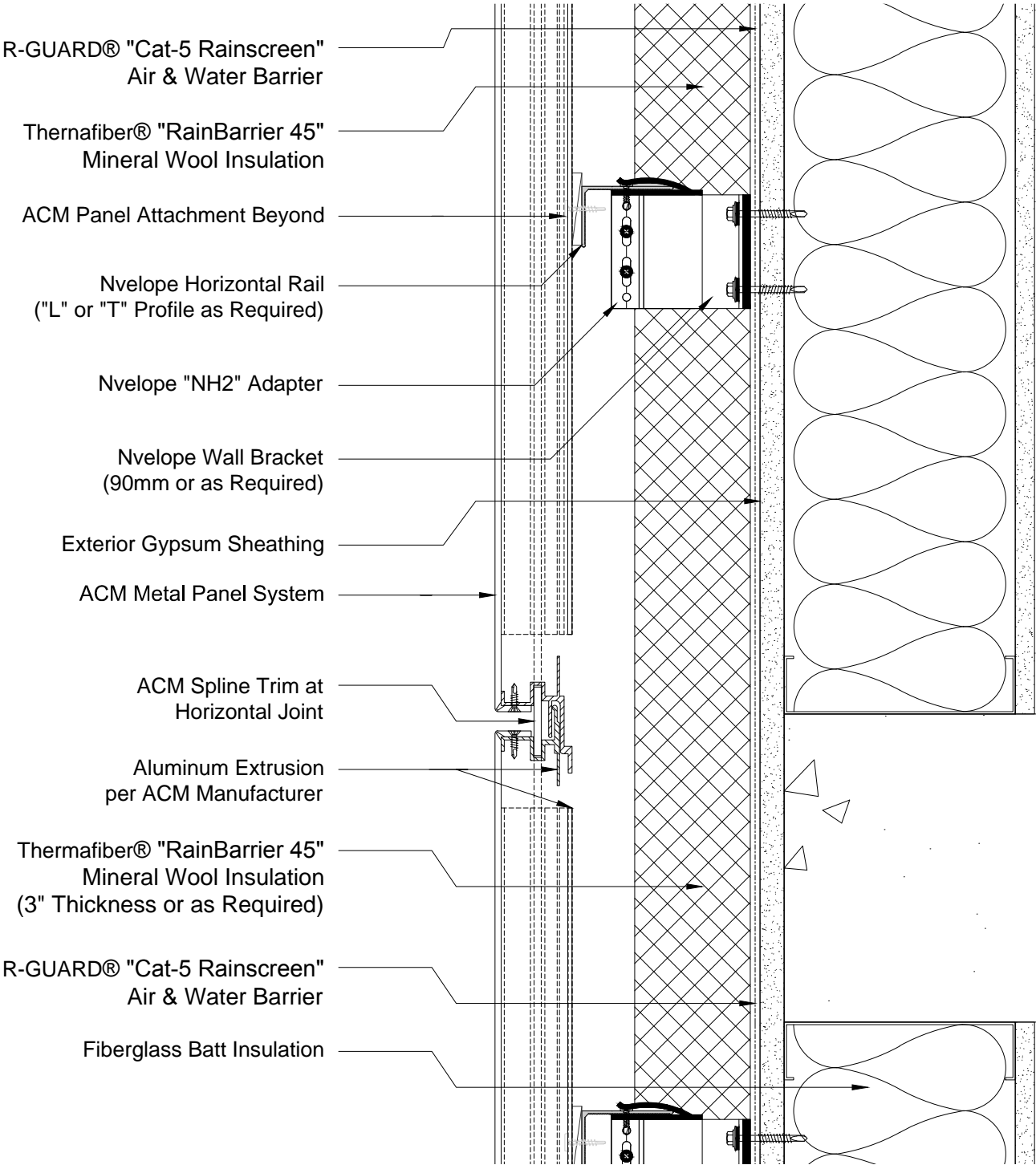
Sheet Title:
DET

System ID:
NH2-ACM

Scale:
3" = 1'-0"

Sheet:
07





08 Wall Section at ACM Metal Panel
DET

PROJECT SPECIFIC ENGINEERING IS REQUIRED TO ADDRESS WIND LOAD, CLADDING WEIGHT/TYPE, PROJECTION, SPACING, ETC). CONTACT NVELOPE FOR ADDITIONAL INFO. GUIDE DETAILS BY NVELOPE ARE PROVIDED FOR GENERAL REFERENCE ONLY AND REPRESENT TYPICAL CONDITIONS FOR OUR CLADDING ATTACHMENT SYSTEMS. ALL IMPLIED WARRANTIES INCLUDING APPROPRIATENESS FOR A SPECIFIC PURPOSE ARE EXPLICITLY EXCLUDED.

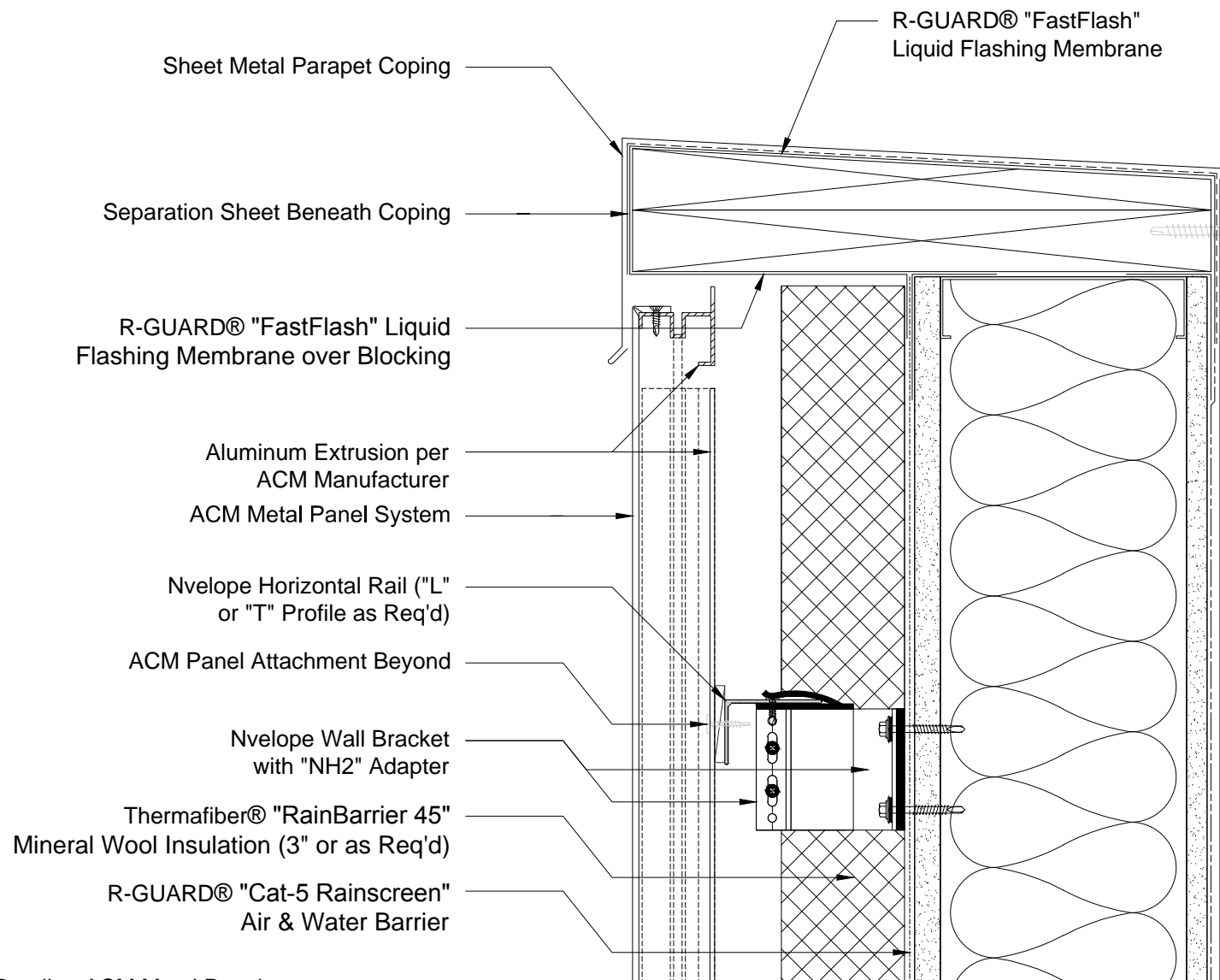
System: **NVELOPE USA, LLC.**
ACM

NvelopeUSA, LLC.
1546 NW 56th Street,
Seattle WA 98107
T: 1 (877) 491-3100
info@nvelopeusa.com
www.nvelopeusa.com



NO.	DESCRIPTION	DATE	INIT.
1	Client Review	03/24/16	rps
2	Client Updates	03/29/16	rps
3	Client Updates	04/06/16	rps
4	----	----	int

info@NvelopeUSA.com http://www.nvelope.us	
Sheet Title: DET	System ID: NH2-ACM
Scale: 3" = 1'-0"	Sheet: 08



09 Parapet Detail at ACM Metal Panel

DET

PROJECT SPECIFIC ENGINEERING IS REQUIRED TO ADDRESS WIND LOAD, CLADDING WEIGHT/TYPE, PROJECTION, SPACING, ETC). CONTACT NVELOPE FOR ADDITIONAL INFO. GUIDE DETAILS BY NVELOPE ARE PROVIDED FOR GENERAL REFERENCE ONLY AND REPRESENT TYPICAL CONDITIONS FOR OUR CLADDING ATTACHMENT SYSTEMS. ALL IMPLIED WARRANTIES INCLUDING APPROPRIATENESS FOR A SPECIFIC PURPOSE ARE EXPLICITLY EXCLUDED.

System:

NVELOPE USA, LLC.
ACM

NvelopeUSA, LLC.
1546 NW 56th Street,
Seattle WA 98107
T: 1 (877) 491-3100
info@nvelopeusa.com
www.nvelopeusa.com



NO.	DESCRIPTION	DATE	INIT.
1	Client Review	03/24/16	rps
2	Client Updates	03/29/16	rps
3	Client Updates	04/06/16	rps
4	----	----	int

info@NvelopeUSA.com
<http://www.nvelope.us>

Sheet Title:
DET

System ID:
NH2-ACM

Scale:
3" = 1'-0"

Sheet:
09

