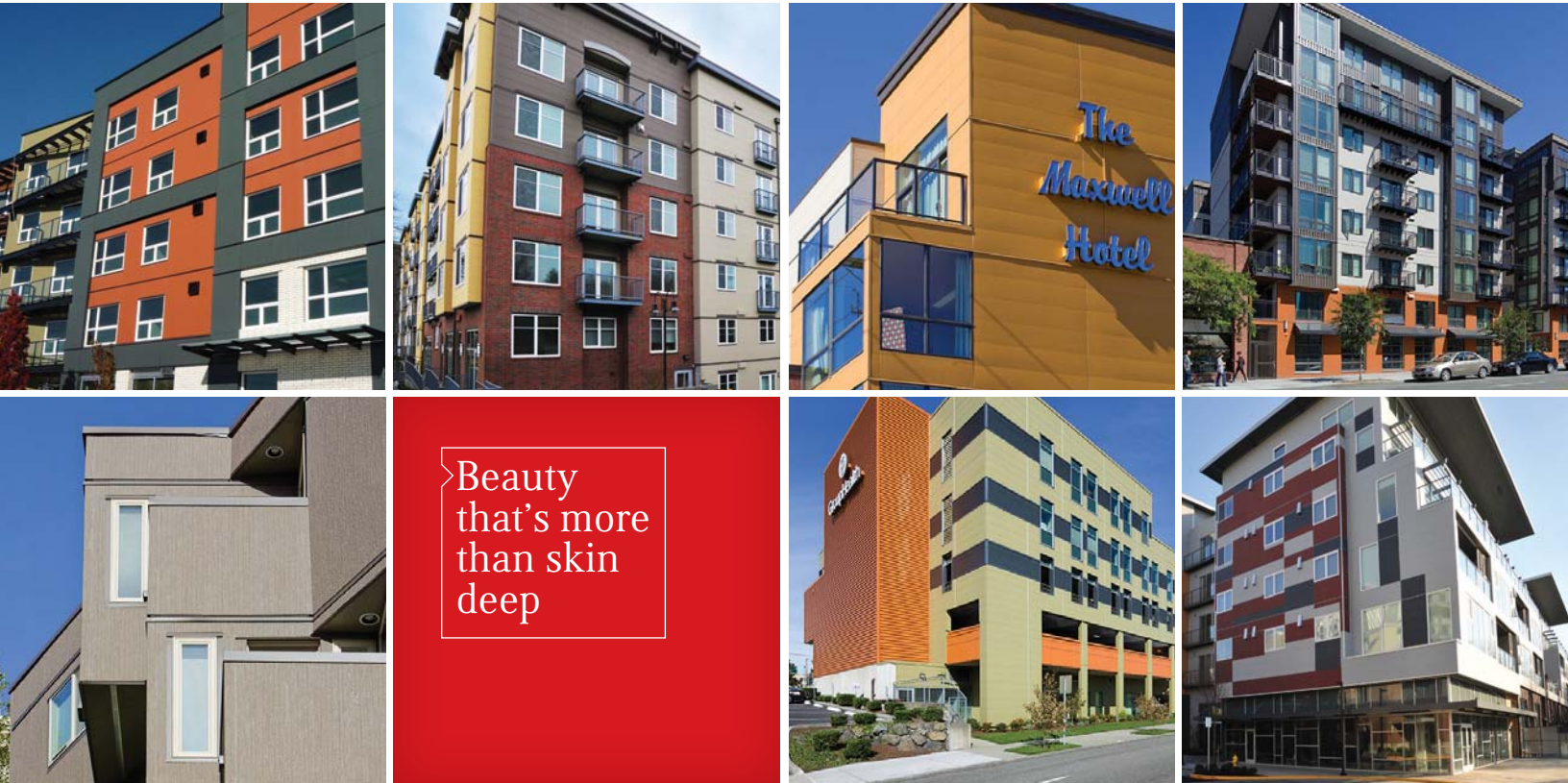




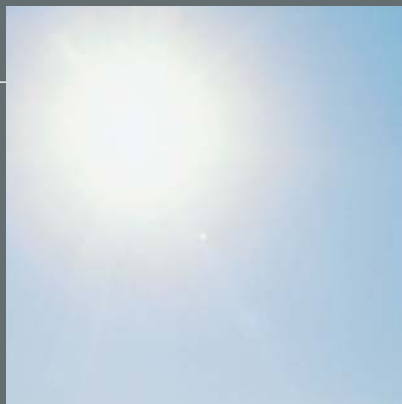
Beauty
that's more
than skin
deep





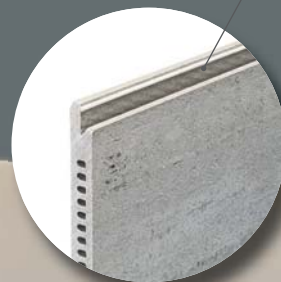
Manufactured and proven in Japan for more than 30 years, the CERACLAD Rain Screen Exterior Siding System:

- ➔ allows moisture to escape from within walls
- ➔ helps avoid mold, health problems and dry-rot in walls
- ➔ helps provide a healthy living environment
- ➔ improves sustainability of the building
- ➔ provides savings in maintenance and energy consumption
- ➔ is available in a wide variety of colors and textures
- ➔ creates a seamless panelized appearance
- ➔ reduces construction time and cost
- ➔ is environmentally low impact by using 44.5% recycled materials



The heat-resistant, UV-cutting ceramic coated finish on CERACLAD siding repels moisture, provides a high performance surface against fading and discoloration, reduces maintenance costs for repainting and increases the value of the building.

The factory applied gasket ensures a tight seal between joints



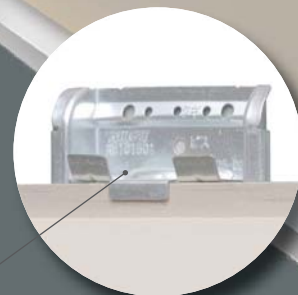
Protects from the outside – and from the inside

Should any rainwater find its way past the exterior siding

panel, the ventilation layer discharges the moisture outside. That same ventilation layer helps guide humid air from inside to the outside, preventing condensation from forming on the sheathing.

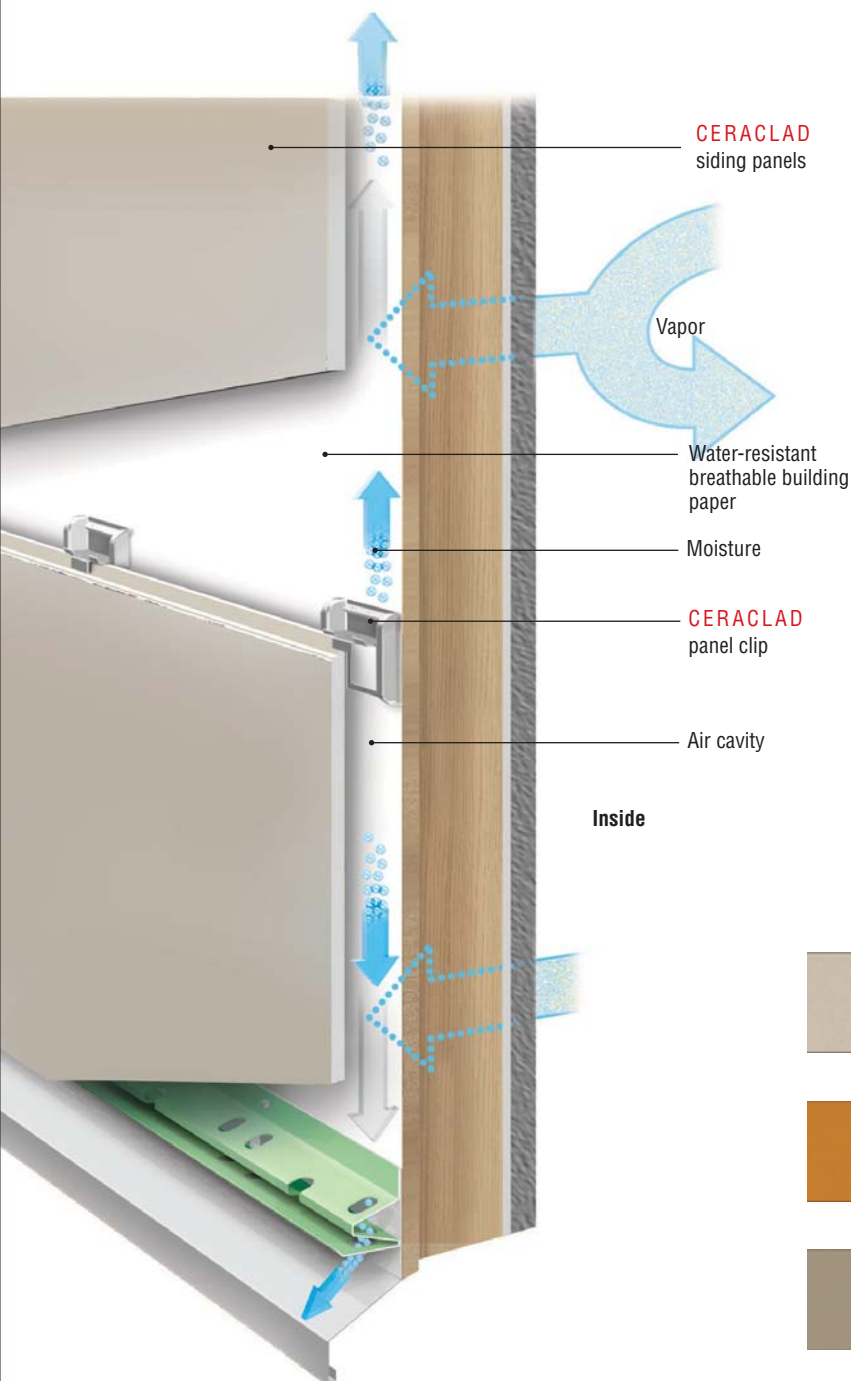
Buildings using the CERACLAD Rain Screen Exterior Siding System are more energy efficient, and sustainable, have fewer maintenance problems and provide a healthier living environment for their occupants.

Outside



The innovative CERACLAD panel clip allows for easy installation and virtually eliminates nails for improved appearance.

→ **CERACLAD** is a ceramic-coated siding assembly that incorporates proven rainscreen technology. Suitable for residential and commercial buildings, the CERACLAD Rain Screen Exterior Siding System consists of pre-finished siding panels and innovative mounting clips and accessories, all of which have been designed for ease of installation.



Manufactured and proven in Japan for more than 30 years, the CERACLAD system incorporates a ventilation layer in the exterior wall structure, allowing moisture to escape from within walls, which helps avoid mold, health problems and dry-rot in walls. The end result is a high performance vented wall assembly that provides structures with long-term protection against water infiltration, and low maintenance wall surfaces with a long lasting, beautiful appearance.

CERACLAD offers a broad palette of colors, rich textures and unique appearance, all backed with a 50 Year Limited Warranty and a 20 Year Limited Color Warranty for pre-finished ceramic coated panels.





Group Health



➔ **CERACLAD** exterior siding panels are a long lasting, energy and resource efficient building product. Consisting of 44.5% recycled material, the panels are 100% recyclable, factory finished with no VOC, and contain no asbestos. By using CERACLAD siding panels made from 44.5% recycled material, you can apply LEED points for recycled content toward your green building design. Choosing environmentally friendly material to help you reach your goal of LEED certification just got easier with CERACLAD.

A super weather resistant ceramic coating minimizes degradation of the exterior wall structure and controls color fading caused by exposure to UV rays so CERACLAD siding panels retain their “new” appearance longer, and the exterior wall structure lasts longer, too.

CERACLAD siding panels allow building owners to refrain from using environmentally harmful products or excessive amounts of water to maintain the clean appearance of the building. The ventilation layer allows the trapped heat in the exterior wall structure to escape into the environment, helping to maintain consistent

temperatures inside the building and reducing energy consumption.



In our manufacturing plants, all waste water discharged from the manufacturing process is appropriately treated by the latest waste water treatment facilities and reused as much as possible. The use of advanced cogeneration systems with higher thermal efficiency empowers the plants to continue operating while maintaining a strong commitment to the conservation of energy.

LEED-certified projects using CERACLAD

Redding School of Arts, CA – LEED Platinum Certified



High Point Neighborhood Center, WA – LEED Gold Certified





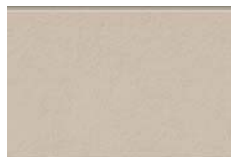
Products used:
Contemporary Smooth – Cinnamon
Textured Stucco – Wheat



"We chose CERACLAD because it's made from recycled materials, has a factory applied ceramic-based finish, and can easily handle the strong winds and intense sun exposure."

CONTEMPORARY SMOOTH

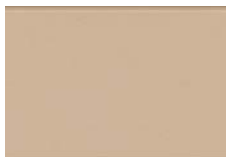
CERACLAD CONTEMPORARY SMOOTH
is available in the following colors:



Linen



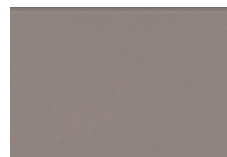
Vanilla



Wheat



Slate



Medium Gray



Cinnamon



Desert Sand



Burgundy Brown



Euro Brown



Brass



Khaki



Medium Taupe



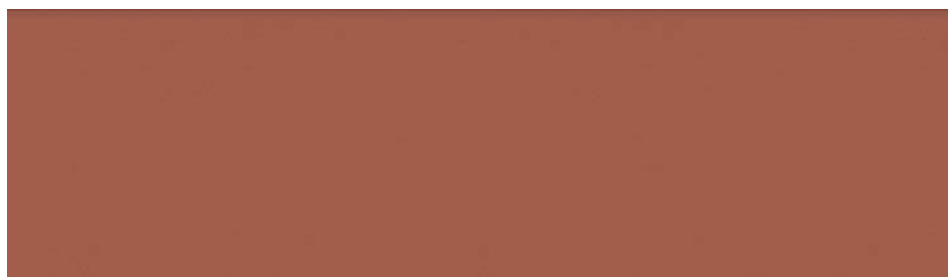
Saffron



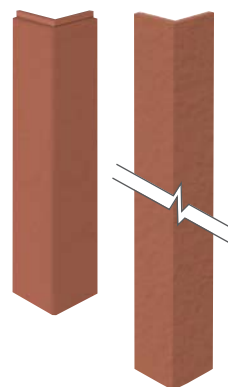
Wasabi



Midnight Blue



Contemporary Smooth



Basic Specifications			
Panel Type	Solid Core ⁴	Dimensions	W: 18" (455 mm) x L: 10' (3030 mm) x T: 5/8" (16 mm)
Application Method	Vertical or Horizontal	Coverage	15 ft ² (1.38 m ²)
Coating Options	Ceramic (15 colors) Acrylic (1 color - Linen)	Weight	60 lb. (27 kg)

The ceramic coating is super weather resistant, low maintenance, and backed by a 20-year limited warranty.
The acrylic coating can be easily repainted.

1. The product color tones on this sheet may appear slightly different from the actual products. Please make sure to check the colors with the actual products.
2. Colors and textures are subject to change.
3. Damage caused by any product installation, repair, or replacement that is not in accordance with KMEW's technical manual, as well as damage caused by product installation on inappropriate buildings/structures, is specifically excluded from warranty coverage. Please review KMEW's technical manual and website for this product.
4. Please note that this texture uses solid core panels and cannot be used in areas where freeze-thaw weathering occurs more than 80 days per year.



Products used:
Textured Stucco – Linen
Contemporary Smooth – Euro Brown



"Re-cladding with CERACLAD not only elevates the property value with its aesthetic improvements, but results in big savings for the owners because it requires very little maintenance."

TEXTURED STUCCO

CERACLAD TEXTURED STUCCO is available in the following colors:



Linen



Vanilla



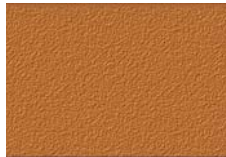
Wheat



Slate



Medium Gray



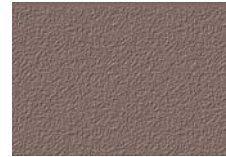
Cinnamon



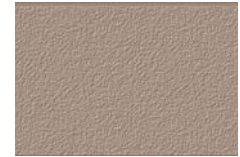
Desert Sand



Burgundy Brown



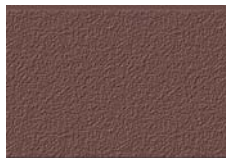
Euro Brown



Brass



Khaki



Medium Taupe



Saffron



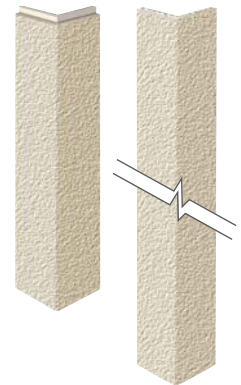
Wasabi



Midnight Blue



Textured Stucco



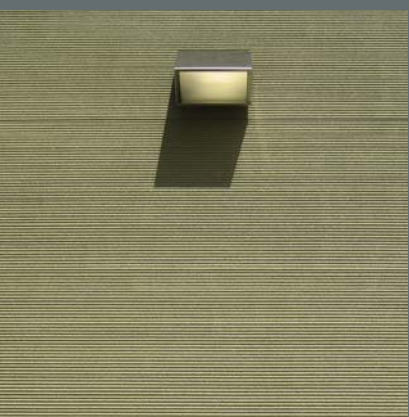
Basic Specifications			
Panel Type	Hollow Core	Dimensions	W: 18" (455 mm) x L: 10' (3030 mm) x T: 5/8" (16 mm)
Application Method	Vertical or Horizontal	Coverage	15 ft ² (1.38 m ²)
Coating Options	Ceramic (15 colors) Acrylic (1 color - Linen)	Weight	42 lb. (19 kg)

The ceramic coating is super weather resistant, low maintenance, and backed by a 20-year limited warranty. The acrylic coating can be easily repainted.

1. The product color tones on this sheet may appear slightly different from the actual products. Please make sure to check the colors with the actual products.
2. Colors and textures are subject to change.
3. Damage caused by any product installation, repair, or replacement that is not in accordance with KMEW's technical manual, as well as damage caused by product installation on inappropriate buildings/structures, is specifically excluded from warranty coverage. Please review KMEW's technical manual and website for this product.

"The high quality and durability of the CERACLAD siding system will produce long-term cost savings for the owner.

Funds that would have been allocated to painting and replacing the sidings can now be spent on other areas."



Products used:
Zen Garden – Wasabi
Contemporary Smooth – Desert Sand



ZEN GARDEN

CERACLAD ZEN GARDEN is
available in the following colors:



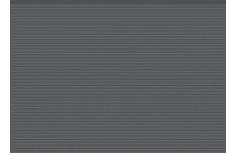
Linen



Vanilla



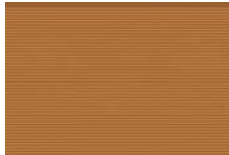
Wheat



Slate



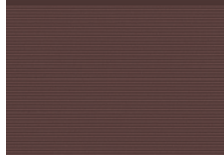
Medium Gray



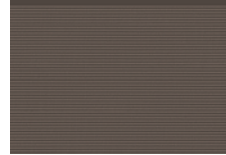
Cinnamon



Desert Sand



Burgundy Brown



Euro Brown



Brass



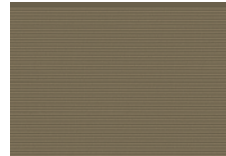
Khaki



Medium Taupe



Saffron



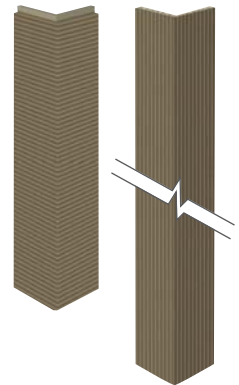
Wasabi



Midnight Blue



Zen Garden



Basic Specifications			
Panel Type	Hollow Core	Dimensions	W: 18" (455 mm) x L: 10' (3030 mm) x T: 5/8" (16 mm)
Application Method	Vertical or Horizontal	Coverage	15 ft ² (1.38 m ²)
Coating Options	Ceramic (15 colors) Acrylic (1 color - Linen)	Weight	42 lb. (19 kg)

The ceramic coating is super weather resistant, low maintenance, and backed by a 20-year limited warranty. The acrylic coating can be easily repainted.

1. The product color tones on this sheet may appear slightly different from the actual products. Please make sure to check the colors with the actual products.
2. Colors and textures are subject to change.
3. Damage caused by any product installation, repair, or replacement that is not in accordance with KMEW's technical manual, as well as damage caused by product installation on inappropriate buildings/structures, is specifically excluded from warranty coverage. Please review KMEW's technical manual and website for this product.



Products used:
8 Reveal – Burgundy Brown
Textured Stucco – Linen

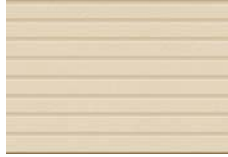


8 REVEAL

CERACLAD 8 REVEAL is
available in the following colors:



Linen



Vanilla



Wheat



Slate



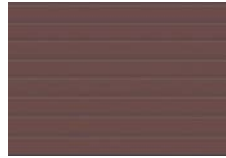
Medium Gray



Cinnamon



Desert Sand



Burgundy Brown



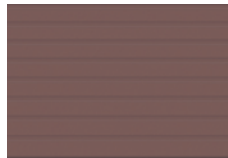
Euro Brown



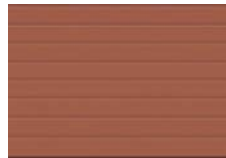
Brass



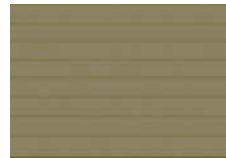
Khaki



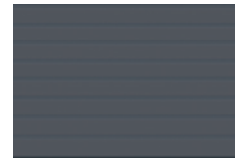
Medium Taupe



Saffron



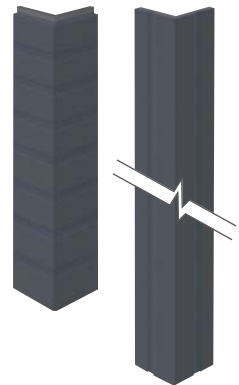
Wasabi



Midnight Blue



8 Reveal



Basic Specifications			
Panel Type	Hollow Core	Dimensions	W: 18" (455 mm) x L: 10' (3030 mm) x T: 5/8" (16 mm)
Application Method	Vertical or Horizontal	Coverage	15 ft ² (1.38 m ²)
Coating Options	Ceramic (15 colors) Acrylic (1 color - Linen)	Weight	42 lb. (19 kg)

The ceramic coating is super weather resistant, low maintenance, and backed by a 20-year limited warranty. The acrylic coating can be easily repainted.

1. The product color tones on this sheet may appear slightly different from the actual products. Please make sure to check the colors with the actual products.
2. Colors and textures are subject to change.
3. Damage caused by any product installation, repair, or replacement that is not in accordance with KMEW's technical manual, as well as damage caused by product installation on inappropriate buildings/structures, is specifically excluded from warranty coverage. Please review KMEW's technical manual and website for this product.



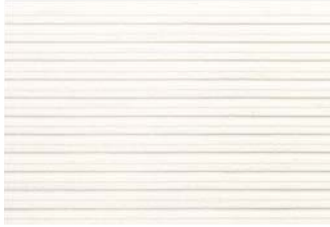
"Along with the rainscreen technology, architects are pleased with the wide-range of colors CERACLAD offers."

"Many opt for CERACLAD's Textured Stucco panels as an alternative to traditional stucco."



CAST STRIPE

CERACLAD CASTSTRIPE is available
in the following colors:



Pearl



Ash



Charcoal



Amber



Cast Stripe



Basic Specifications			
Panel Type	Hollow Core	Dimensions	W: 18" (455 mm) x L: 10' (3030 mm) x T: 5/8" (16 mm)
Application Method	Vertical or Horizontal	Coverage	15 ft ² (1.38 m ²)
Coating Options	Ceramic (4 colors)	Weight	42 lb. (19 kg)

The ceramic coating is super weather resistant, low maintenance, and backed by a 20-year limited warranty.

1. The product color tones on this sheet may appear slightly different from the actual products. Please make sure to check the colors with the actual products.
2. Colors and textures are subject to change.
3. Damage caused by any product installation, repair, or replacement that is not in accordance with KMEW's technical manual, as well as damage caused by product installation on inappropriate buildings/structures, is specifically excluded from warranty coverage. Please review KMEW's technical manual and website for this product.



Products used:
Fiotto – Charcoal
Fiotto – Cream



CERACLAD FIOTTO is available in the following colors:



Pearl



Cream



Wheat



Charcoal



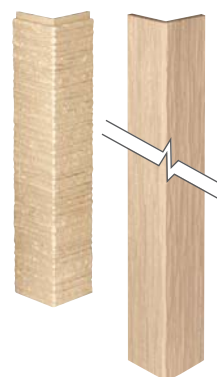
French Beige



Euro Brown



Fiotto



Basic Specifications			
Panel Type	Hollow Core	Dimensions	W: 18" (455 mm) x L: 10' (3030 mm) x T: 5/8" (16 mm)
Application Method	Vertical or Horizontal	Coverage	15 ft² (1.38 m²)
Coating Options	Ceramic (6 colors)	Weight	42 lb. (19 kg)

The ceramic coating is super weather resistant, low maintenance, and backed by a 20-year limited warranty.

1. The product color tones on this sheet may appear slightly different from the actual products. Please make sure to check the colors with the actual products.
2. Colors and textures are subject to change.
3. Damage caused by any product installation, repair, or replacement that is not in accordance with KMEW's technical manual, as well as damage caused by product installation on inappropriate buildings/structures, is specifically excluded from warranty coverage. Please review KMEW's technical manual and website for this product.



"CERACLAD Color Technology allows for multi-tonal color that captures the look of real wood. Unlike wood siding, CERACLAD is highly durable and requires minimal maintenance."





RUSTIC WOOD

CERACLAD RUSTIC WOOD is available in the following colors:



Bronze



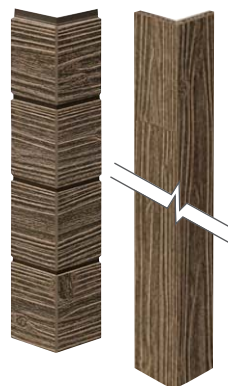
Caramel



Coffee



Rustic Wood

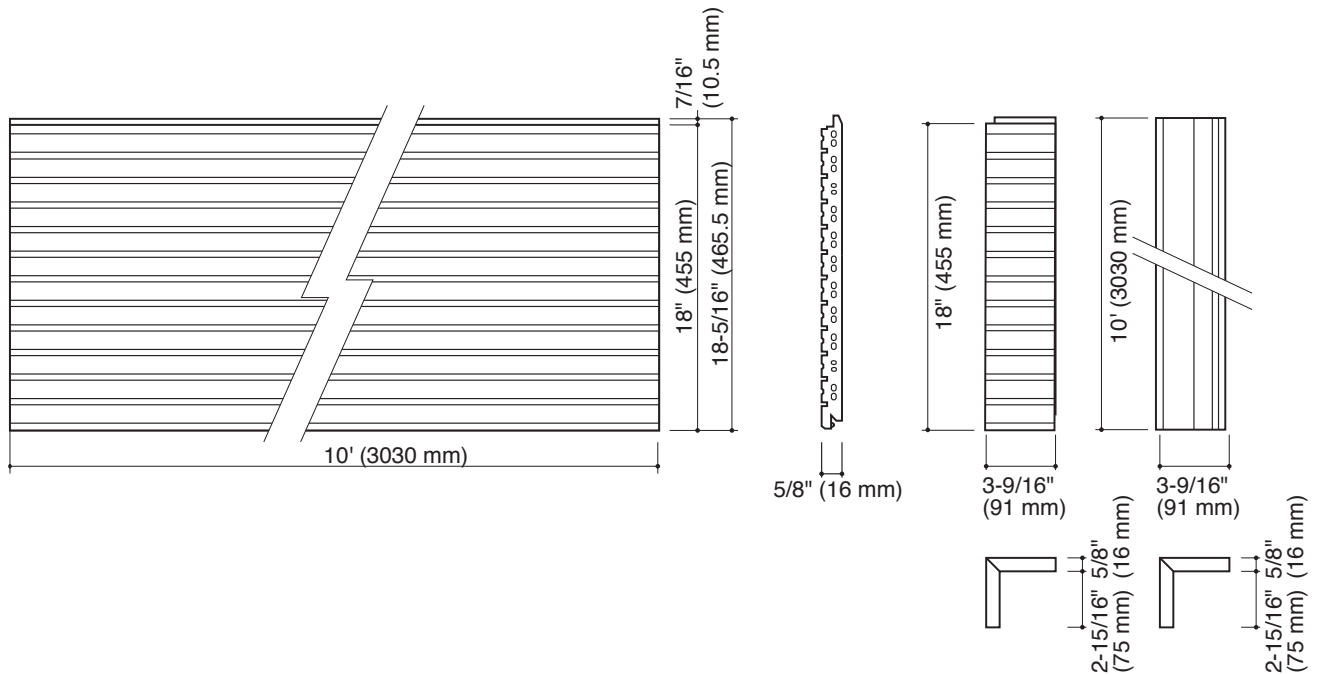








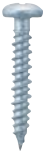



Basic Specifications			
Panel Type	Hollow Core	Dimensions	W: 18" (455 mm) x L: 10' (3030 mm) x T: 5/8" (16 mm)
Application Method	Vertical or Horizontal	Coverage	15 ft ² (1.38 m ²)
Coating Options	Ceramic (3 colors)	Weight	42 lb. (19 kg)

The ceramic coating is super weather resistant, low maintenance, and backed by a 20-year limited warranty.

1. The product color tones on this sheet may appear slightly different from the actual products. Please make sure to check the colors with the actual products.
2. Colors and textures are subject to change.
3. Damage caused by any product installation, repair, or replacement that is not in accordance with KMEW's technical manual, as well as damage caused by product installation on inappropriate buildings/structures, is specifically excluded from warranty coverage. Please review KMEW's technical manual and website for this product.

➔ **CERACLAD** provides the complete installation package to your jobsite including panels, accessories and hardware. All products are individually packed and marked for your convenience. CERACLAD helps you to deliver fast, high quality rainscreen installations on every project – every time.



Panel Clip	Corner Clip	Starter Bar	Caulking Joiner	Face Nail
				
Face Screw	Wood/Steel Screw	Touch-up Paint	Spacer Block	Repair Putty
				

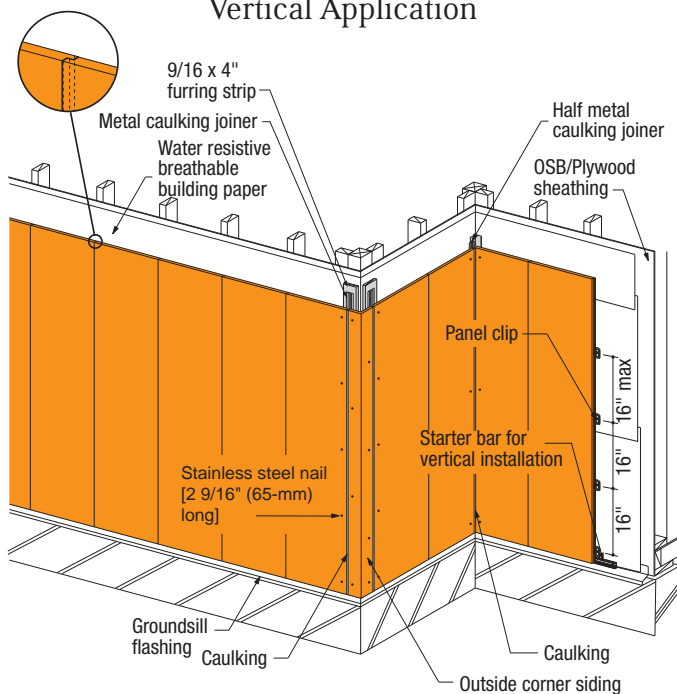
Product Applications

All textures of CERACLAD siding panels are designed to allow both horizontal and

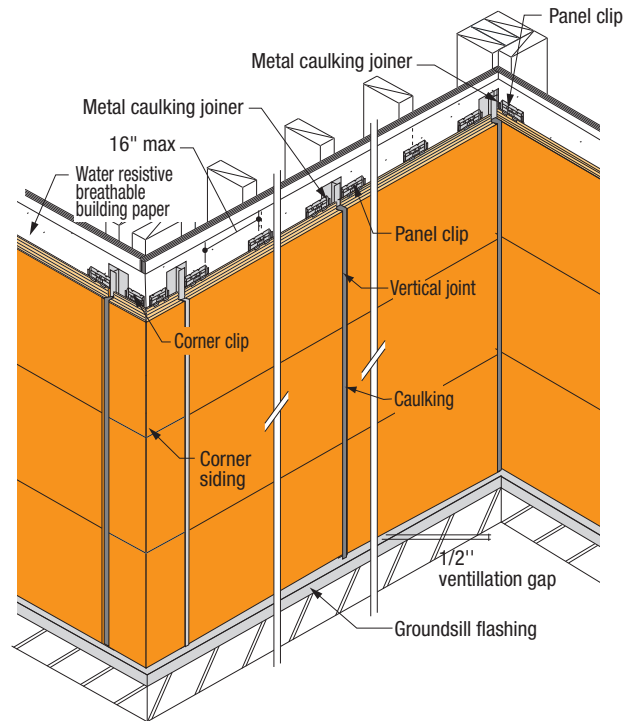
vertical application. Having the option to install the panels in either direction provides greater design flexibility for architects, and installers will find that the innovative panel clip system makes the installation of CERACLAD panels easy and straightforward no matter what application is chosen.

In order to have an effective rainscreen system in the wall structure, a fully ventilated cladding with openings to the exterior, both at the top and bottom of the wall, is critical. Simply providing an air space behind the cladding is not enough. In addition, tests on air flow velocity in air cavities have found that, in order to maximize air flow, each story should have a separate air cavity.

Vertical Application



Horizontal Application



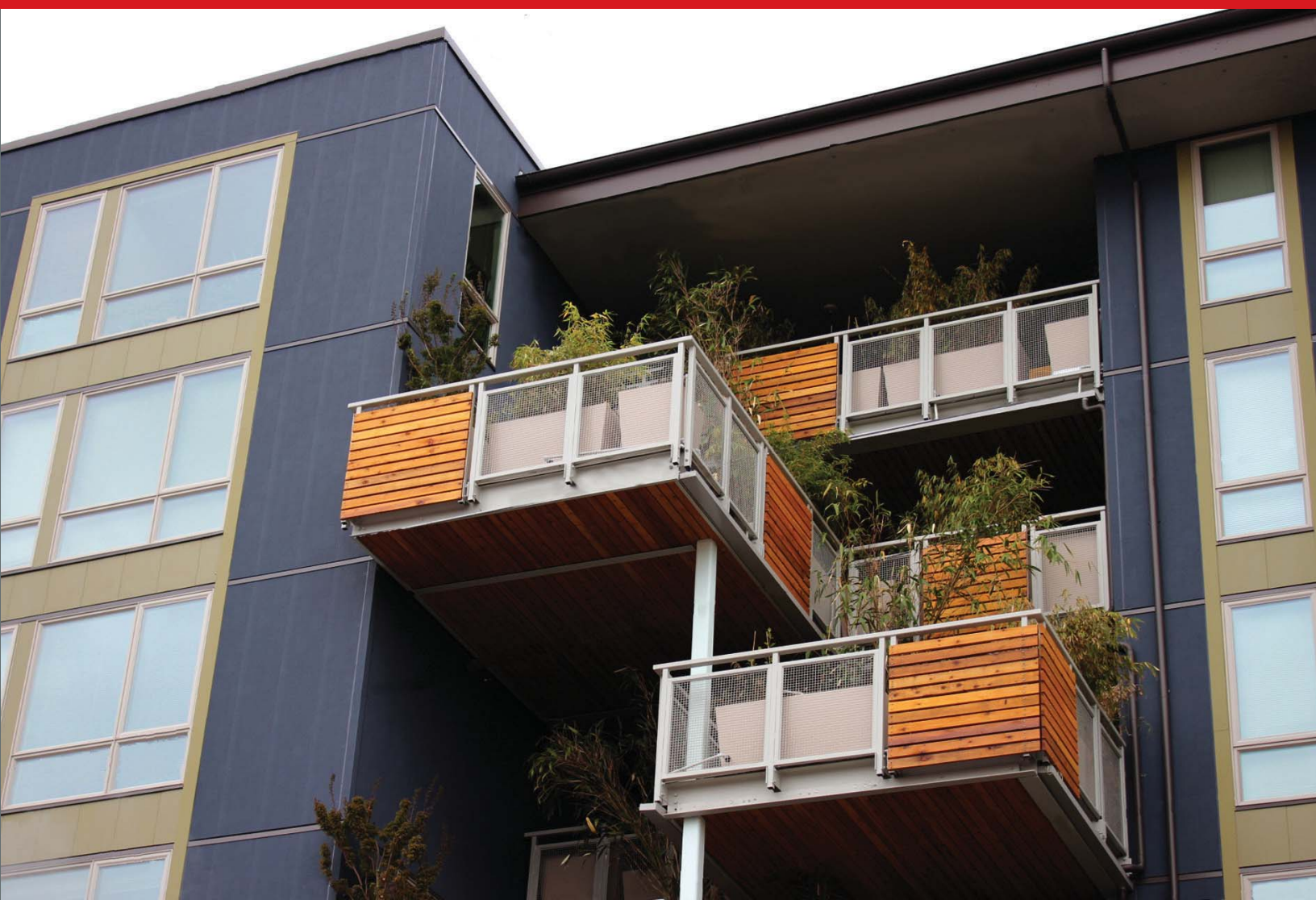
The complete installation package provided with the CERACLAD Rain Screen Exterior Siding System ensures that proven rainscreen technology is incorporated into the exterior wall structures.

Along with the quality of the material, correct installation of the siding materials is essential for a rainscreen to perform effectively.

Products used:
8 Reveal: Medium Gray
Zen Garden: Slate
Contemporary Smooth: Linen
Contemporary Smooth: Slate



Products used:
Zen Garden: Midnight Blue
Contemporary Smooth: Wasabi



The CERACLAD Advantage



1

Easy to Specify

We take the guesswork out of specifying a fully ventilated rain screen. The CERACLAD system includes everything you need for a functional ventilated rainscreen, even the fasteners!

2

Easy to Install

CERACLAD is easy to install and requires minimal tools or training. Our panels can be cut in the field with a circular saw and fiber cement blade.

3

Easy to Maintain

With our proprietary Ceramic coating, the color and finish of your project will stay looking vibrant and new for decades, resulting in less maintenance over the lifespan of the building.

Our website has all the detailed information you need to make specifying your next CERACLAD project simple:

- ➔ Product photos and details
- ➔ Installation Videos
- ➔ 3-Part Spec
- ➔ Testing Data
- ➔ Installation Guide and Manual
- ➔ CAD Details



For more information go to: www.kmew.co.jp/ceraclad/technical-information



Products used:
Cast Stripe – Charcoal

© Stephen A . Miller

Products used:
8 Reveal – Saffron
8 Reveal – Vanilla
Cast Stripe – custom color
Contemporary Smooth – Slate



Products used:
Contemporary Smooth - Linen
Contemporary Smooth - Brass





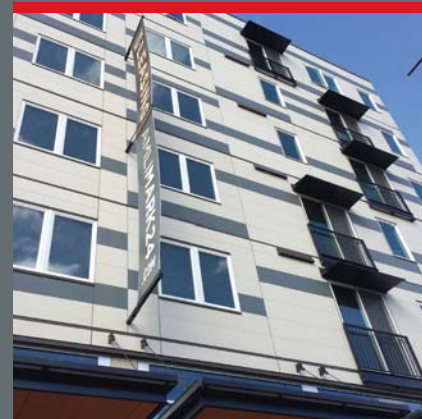
Products used:
Contemporary Smooth (acrylic) – Linen



Products used:
Contemporary Smooth – Midnight Blue



Products used:
Contemporary Smooth – Linen
Contemporary Smooth – Slate



The CERACLAD Express Limited Transferable Warranty

1. WARRANTY COVERAGE:

KMEW Co., Ltd. ("KMEW") warrants to the purchaser and to its transferees, including the original owner of the property upon which its Product (the KMEW CERAMIC COATING SIDING - the "Ceramic Product" or the KMEW ACRYLIC COATING SIDING - the "Acrylic Product", collectively, the "Product") is installed as external walls, and up to the first subsequent owner of the property (each a "Covered Person" - In the event of a multi-unit condominium, "Covered Person" shall mean the Condominium Association, Owners' Association, or similar governing body for the owner/residents of the structure) that when manufactured, the Product is free from defects in material and manufacture, and when used for its intended purpose and properly stored, installed and maintained per the CERACLAD installation manual, the Product shall be warranted as follows:

NOTE: All warranty periods discussed and defined herein shall be deemed to commence on the date of purchase of the Product by the party installing the Product or, as applicable, on the date of purchase of the Product by the property owner for third-party installation. This warranty is applicable only to installations occurring within the United States.

50 Year Limited Warranty: The Product shall: not incur structural cracking, rot or delaminate under normal use and wear; resist damage caused by termites; and resist damage caused by hail (except for hail associated with winds exceeding 60 miles per hour), for a period of 50 years under normal use.

20 Year Limited Warranty: The Ceramic Product finish shall (A) retain its color and luster (meaning color fade shall not exceed color No.1 - 2 and E=9.6 in accordance with ISO 105-A02:1990, Test for color fastness - Part A02: Grey scale for assessing change in color) for color integrity, and shall not significantly (B) peel, (C) incur structural cracking, or (D) chip, for a period of 20 years under normal use.

15 Year Limited Warranty: The Acrylic Product finish shall not significantly (A) peel, (B) incur structural cracking, or (C) chip, for a period of 15 years under normal use.

2. WARRANTY DURATION:

This Limited Warranty will continue in favor of a Covered Person for the respective consecutive years provided above.

3. WARRANTY EXCLUSIONS:

This Warranty covers only the specific manufacturing defects described in Section 1 above. Notwithstanding anything herein to the contrary, failures attributable to any other reason including, but not limited to, those set forth below, are hereby specifically excluded from warranty coverage:

- A. improper storage, shipping, handling, or installation (please refer to CERACLAD installation manual and website);
- B. improper design and/or construction of the building/structure to which the Product is attached;
- C. lack of, or improper, maintenance and repair after installation (please refer to CERACLAD installation manual and website);
- D. any unauthorized alteration of the Product;
- E. attachment of non-authorized accessories to the Product (for a list of authorized accessories, please refer to CERACLAD installation manual and website);
- F. warping, cracking, settling, or other movement or condition of the building/structure to which the Product is attached;
- G. substrate failures which cause or contribute to any compromise or failure of the Product. This exclusion applies to both supporting and non-supporting substrates (including, but not limited to, glass mat gypsum substrate/gypsum, plywood/OSB sheathing, and structural framing/stud) used under or attached to the Product;
- H. acts of God including, but not limited to, lightning, hurricanes, tornados, floods, earthquakes, mudslides or any other severe weather or natural phenomena;
- I. unauthorized sealer or caulking;
- J. paint, or other coating or finish applied after purchase;
- K. mold, mildew, fungi, bacteria, or any organism that is allowed to grow on the surface of the Product;
- L. industrial pollution (including acid, alkali, sulfur, noxious gases);
- M. exposure to salt spray, heat sources;
- N. submersion or continuous exposure to moisture (spray, splash from ocean, lake, pond or river);
- O. exceeding maximum design wind load as specified in ICC ESR-1627;
- P. other unusual or unreasonable conditions in the surrounding physical environment; and
- Q. any other such similar or dissimilar occurrences beyond the control of KMEW.

NOTICE: DAMAGE CAUSED BY ANY PRODUCT INSTALLATION, REPAIR, OR REPLACEMENT THAT IS NOT IN ACCORDANCE WITH THE CERACLAD INSTALLATION MANUAL, AS WELL AS DAMAGE CAUSED BY PRODUCT INSTALLATION ON INAPPROPRIATE BUILDINGS/STRUCTURES, IS HEREBY SPECIFICALLY EXCLUDED FROM WARRANTY COVERAGE. PLEASE REVIEW THE CERACLAD INSTALLATION MANUAL AND WEBSITE FOR THIS PRODUCT.

4. WARRANTY CONDITIONS:

KMEW's liability hereunder to the Covered Person shall also be subject to each of the following additional terms and conditions:

- A. The claimant must provide proof that he/she is a Covered Person;
- B. The CERACLAD installation manual for the proper storage, shipping, handling, installation and maintenance of the Product must have been followed at all times (failure to do so may affect Product performance and void the Warranty); and

- C. UPON DISCOVERY OF A POSSIBLE COVERED PRODUCT DEFECT OR FAILURE, AND PRIOR TO MAKING ANY PERMANENT REPAIR TO THE PRODUCT, THE COVERED PERSON MUST, AT ITS OWN COST AND EXPENSE: (i) PROMPTLY PROVIDE FOR PROTECTION OF ALL PROPERTY THAT COULD BE FURTHER DAMAGED UNTIL SUCH TIME THAT THE POSSIBLE COVERED DEFECT OR FAILURE HAS BEEN REPAIRED; (ii) PROMPTLY, BUT IN NO EVENT LATER THAN THIRTY (30) DAYS AFTER DISCOVERY, PROVIDE WRITTEN NOTICE TO KMEW OF THE POSSIBLE COVERED PRODUCT DEFECT OR FAILURE (AS PROVIDED BELOW); AND (iii) ALLOW KMEW A REASONABLE PERIOD OF TIME (UP TO 25 BUSINESS DAYS AFTER NOTICE HAS BEEN RECEIVED BY KMEW) AS WELL AS PROVIDE REASONABLE ACCESS THROUGHOUT THE PROPERTY TO KMEW OR KMEW's AGENT SO THEY CAN EXAMINE, PHOTOGRAPH AND/OR TAKE SAMPLES OF THE PRODUCT.

5. WARRANTY CLAIMS:

Claims under this Limited Warranty, must be promptly presented in writing to KMEW Co., Ltd. 13F Crystal Tower Bldg. 1-2-27 Shiromi, Chuo-Ku, Osaka 540-6013 Japan, and must include:

- A. The address and location of the structure;
- B. Details (including photos) of the alleged defect or failure sufficient for KMEW to begin investigating the claim;
- C. Proof of owner or installer's date of purchase;
- D. The name of the owner, builder or installer; and
- E. Proof that you are a Covered Person (as defined in Section 1 above).

6. WARRANTY REMEDY:

If, after investigation, KMEW, in its sole discretion, determines that a warranted defect exists, KMEW shall do the following:

During the First Year After Purchase:

(Before Installation): Replace¹ the defective portion of the Product or reimburse Covered Person the Original Purchase Price² of the defective portion of the Product.

(After Installation): Replace¹ the defective portion of the Product or reimburse the Covered Person for resulting losses up to the Original Purchase Price² of the defective portion of the Product.

Beyond the First Year After Purchase (whether or not installed):

For Standard Product: Replace¹ the defective portion of the Product or reimburse the Covered Person up to the Original Purchase Price² of the defective portion of the Product, reduced by 6.67% for each year from the original date of purchase, such that after the 15th year no warranty shall remain.

For Ceramic Product: Replace¹ the defective portion of the Product or reimburse the Covered Person up to the Original Purchase Price² of the defective portion of the Product, reduced by 5% for each year from the original date of purchase, such that after the 20th year no warranty shall remain.

For All Other Claims under the 50 year Warranty: Replace¹ the defective portion of the Product or reimburse the Covered Person up to the Original Purchase Price² of the defective portion of the Product, reduced by 2% for each year from the original date of purchase, such that after the 50th year no warranty shall remain.

REFUND OR PRODUCT REPLACEMENT BY KMEW SHALL BE AT KMEW'S SOLE DISCRETION AND SHALL BE THE SOLE AND EXCLUSIVE REMEDY WITH RESPECT TO ANY DEFECT; AND ACCEPTANCE BY ANY COVERED PERSON SHALL CONSTITUTE A FULL SETTLEMENT AND RELEASE OF ALL CLAIMS FOR DAMAGES OR OTHER RELIEF. FOR CLAIMS INVOLVING BOTH COLOR AND OTHER DEFECTS, THE HIGHER REIMBURSEMENT RATE SHALL PREVAIL. KMEW WILL NOT REFUND OR PAY ANY COSTS IN CONNECTION WITH LABOR OR ACCESSORY MATERIALS.

¹ KMEW reserves the right to modify or to discontinue any of its products without notice and shall not be liable as a result of such modification or discontinuation. In such event, a suitable replacement product will be determined by KMEW in its sole and reasonable discretion.

² If the Original Purchase Price cannot be established by the Covered Person, it shall be determined by KMEW in its sole and reasonable discretion.

7. WARRANTY DISCLAIMER:

The statements herein constitute the only warranty extended by KMEW for the Product. KMEW DISCLAIMS ALL OTHER WARRANTIES, EXPRESS OR IMPLIED, INCLUDING ANY IMPLIED WARRANTIES OF MERCHANTABILITY OR FITNESS FOR A PARTICULAR PURPOSE, EXCEPT WHERE PRODUCT PURCHASE IS SUBJECT TO CONSUMER PRODUCT WARRANTY LAW, OR BY USAGE OF TRADE OR COURSE OF DEALING IN WHICH INSTANCES THE DURATION OF ANY APPLICABLE WARRANTIES ARE LIMITED TO THE FIRST ELAPSE OF THE WARRANTY PERIOD PROVIDED ABOVE, OR SUCH SHORTER PERIOD AS APPLICABLE LAW PERMITS OR REQUIRES. Some states do not allow limitations on how long an implied warranty lasts, so the above limitation may not apply to you. IN NO EVENT WILL KMEW HAVE ANY LIABILITY FOR ANY INCIDENTAL, SPECIAL, INDIRECT, CONSEQUENTIAL OR OTHER DAMAGES (WHETHER RESULTING FROM NONDELIVERY OR FROM THE USE, MISUSE, OR INABILITY TO USE THE PRODUCT OR FROM DEFECTS IN THE PRODUCT). Some states do not allow the exclusion or limitation of incidental or consequential damages, so the above limitation may not apply to you. NO OTHER WARRANTY WILL BE MADE BY THE MANUFACTURER OR THE SELLER OR BY OPERATION OF LAW OR BY USAGE OF TRADE OR COURSE OF DEALING WITH RESPECT TO THE PRODUCT OR ITS INSTALLATION, STORAGE, HANDLING, MAINTENANCE, USE, REPLACEMENT OR REPAIR. This Warranty gives you specific legal rights and you may also have other rights which vary from state to state.

8. DISPUTE RESOLUTION

Any dispute arising under this Warranty shall be resolved by arbitration conducted in King County State of Washington, United States of America pursuant to the then current rules of the American Arbitration Association, applying the laws of the State of Washington without regard to its internal conflicts of laws provisions. The award of the arbitrator shall be final and binding. Each party shall be responsible for its own legal fees and costs, as well as its equal share of any arbitrators' fees.

Manufactured by:

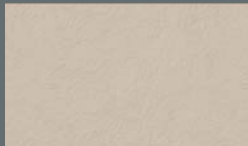
KMEW Co., Ltd.
13F, Crystal Tower Bldg.
1-2-27 Shiromi, Chuo-ku, Osaka 540-6013 Japan
Tel: +81-6-6945-8123

Notice: Please print this card for your records.



Products used:
Textured Stucco – Vanilla
Textured Stucco – Euro Brown



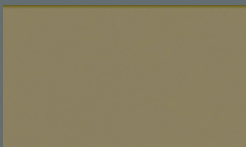
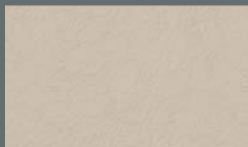
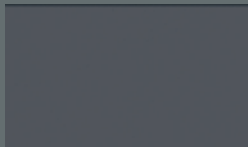
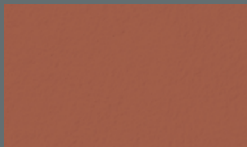
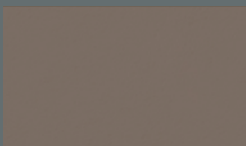
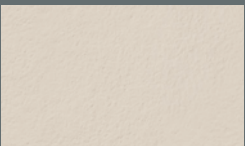
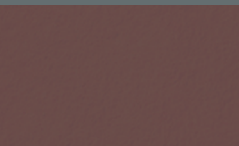
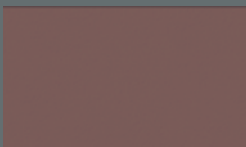
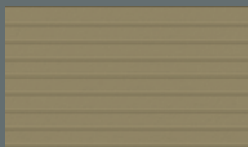
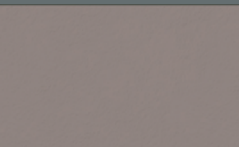
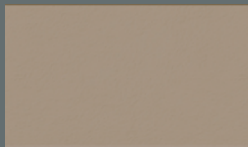
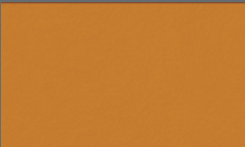
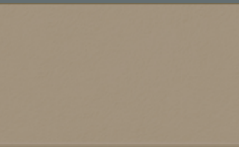
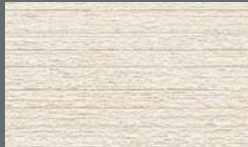
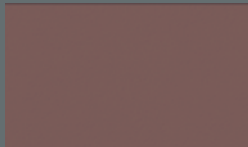


Please visit our website for
additional CERACLAD product
information including:

- Product samples
- Specifications
- CAD details
- Product performance & approval documents
- MSDS

www.ceraclad.com

Manufactured by:
KMEW Co., Ltd.
13F, Crystal Tower Bldg.
1-2-27 Shiromi, Chuo-Ku, Osaka 540-6013
Japan



Please visit our website for additional CERACLAD product information including:

- Product samples
- Specifications
- CAD details
- Product performance & approval documents
- MSDS

www.ceraclad.com

Manufactured by:

KMEW Co., Ltd.

13F, Crystal Tower Bldg.

1-2-27 Shiromi, Chuo-Ku, Osaka 540-6013
Japan