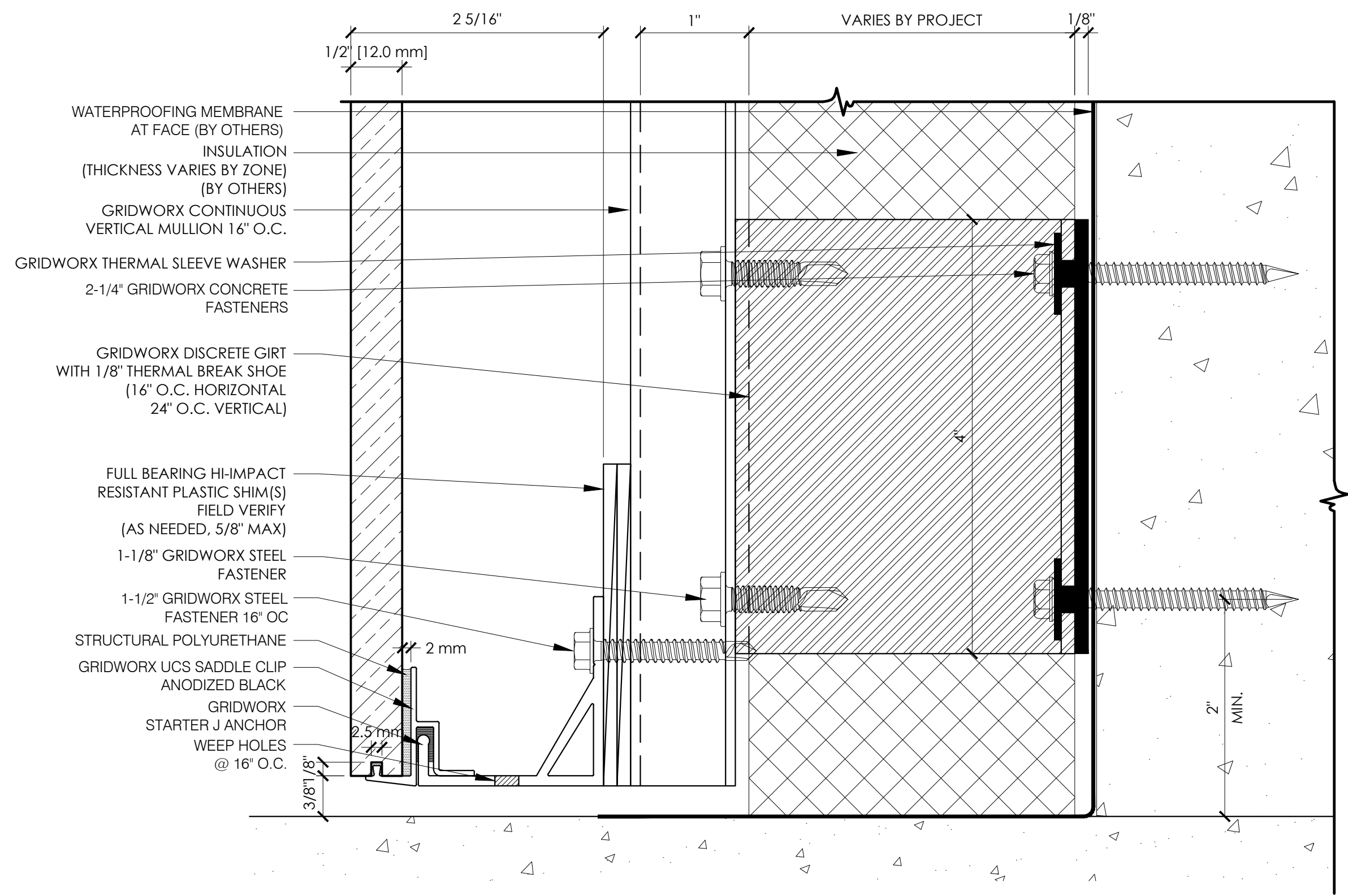


GRIDWORX ASHRAE 90.1 UCS - PLANX SYSTEM
 12mm STONE - STARTER ANCHOR
 3/8" OPEN JOINT - CONCRETE/CMU SUBSTRATE



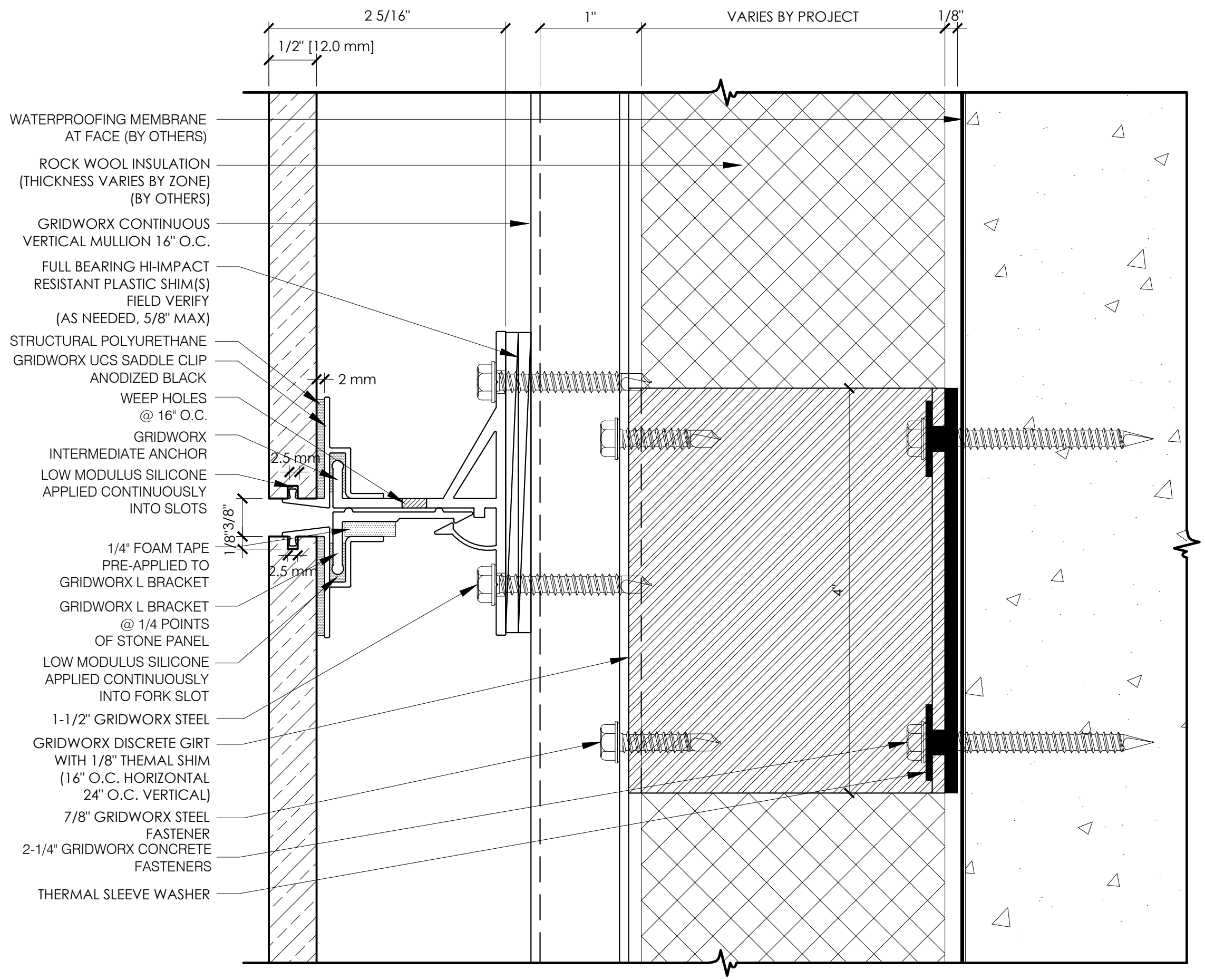
DRAWN BY:



PRECISION WALL SYSTEMS
10980 ALDER CIRCLE
DALLAS, TEXAS 75238
TEL: 214.774.4502
FAX: 214.432.5963

ARCHITECT:

TEL:
FAX:



GRIDWORX ASHRAE 90.1 UCS - PLANX SYSTEM
 12mm STONE - INTERMEDIATE ANCHOR
 3/8" OPEN JOINT - CONCRETE/CMU SUBSTRATE

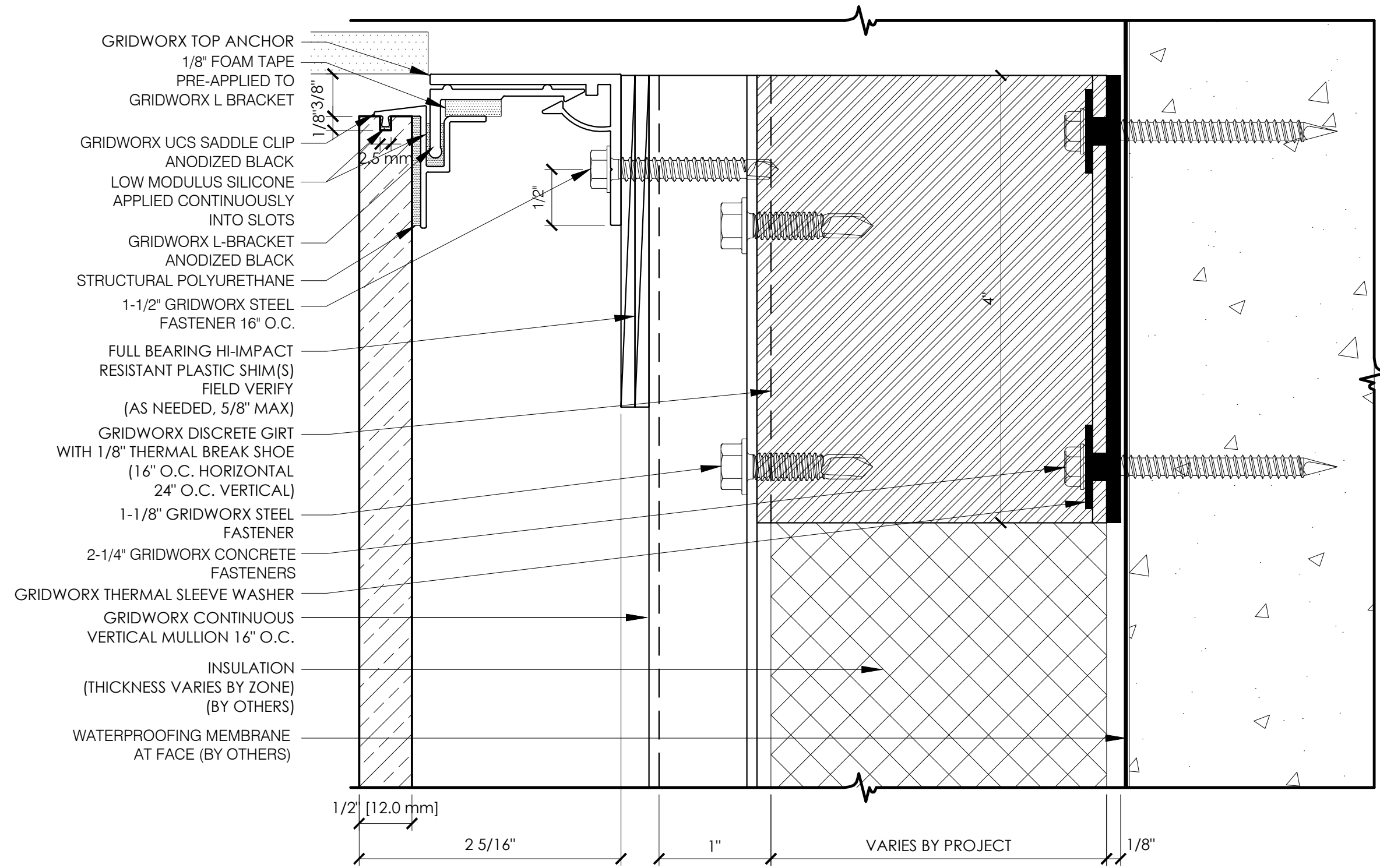
ASHRAE DETAILS

DATE: XX/XX/XXXX

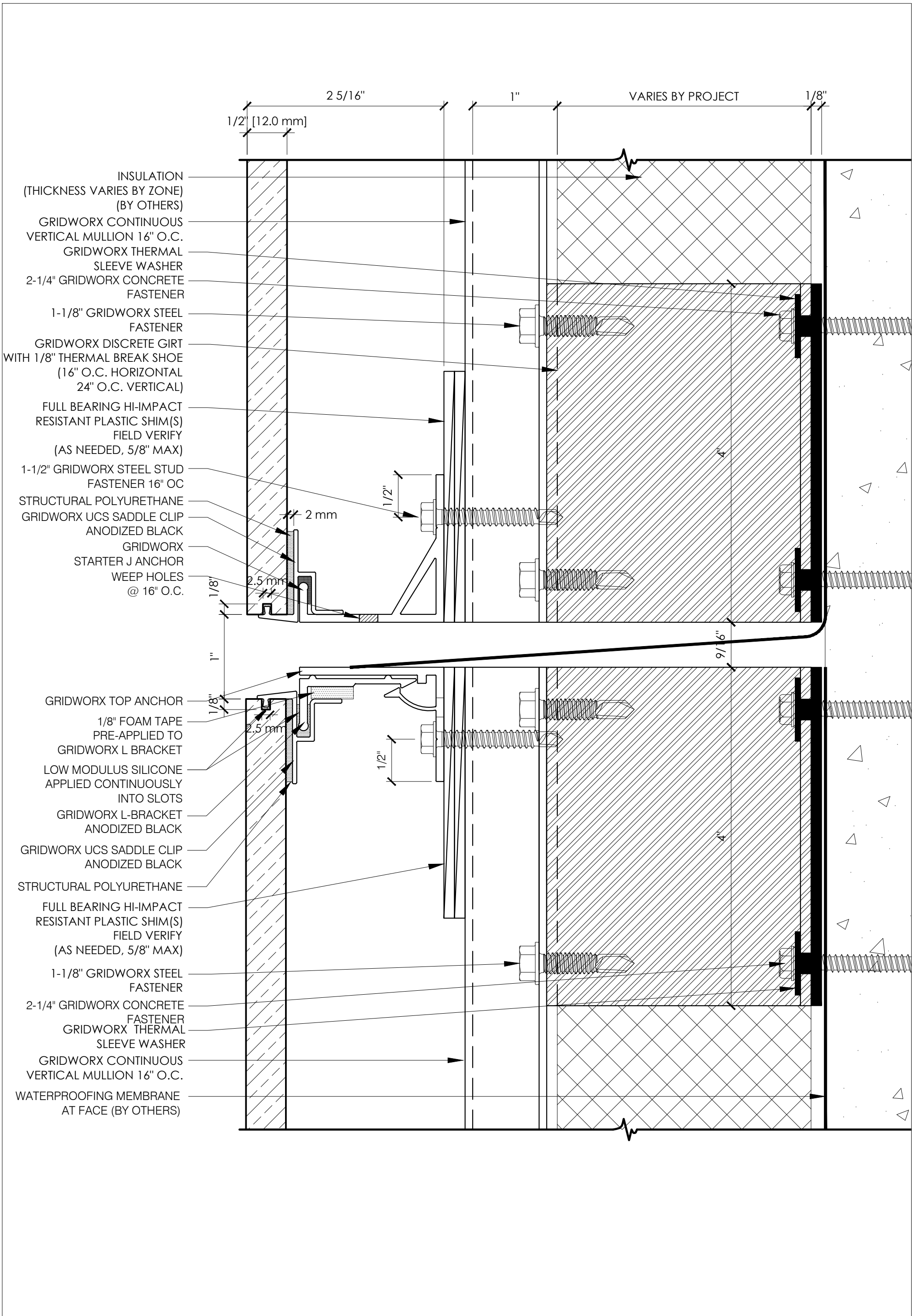
NOTES:
SCALE: 1:1

TITLE:

SHEET:



GRIDWORX ASHRAE 90.1 UCS - PLANX SYSTEM
 12mm STONE - TOP ANCHOR
 3/8" OPEN JOINT - CONCRETE/CMU SUBSTRATE



GRIDWORX ASHRAE 90.1 UCS - PLANX SYSTEM

12mm STONE - DEFLECTION JOINT
3/8" OPEN JOINT - CONCRETE/CMU SUBSTRATE

DATE:	XXXX/XXXX
NOTES:	SCALE: 1:1
TITLE:	ASHRAE DETAILS
SHEET:	

DRAWN BY:

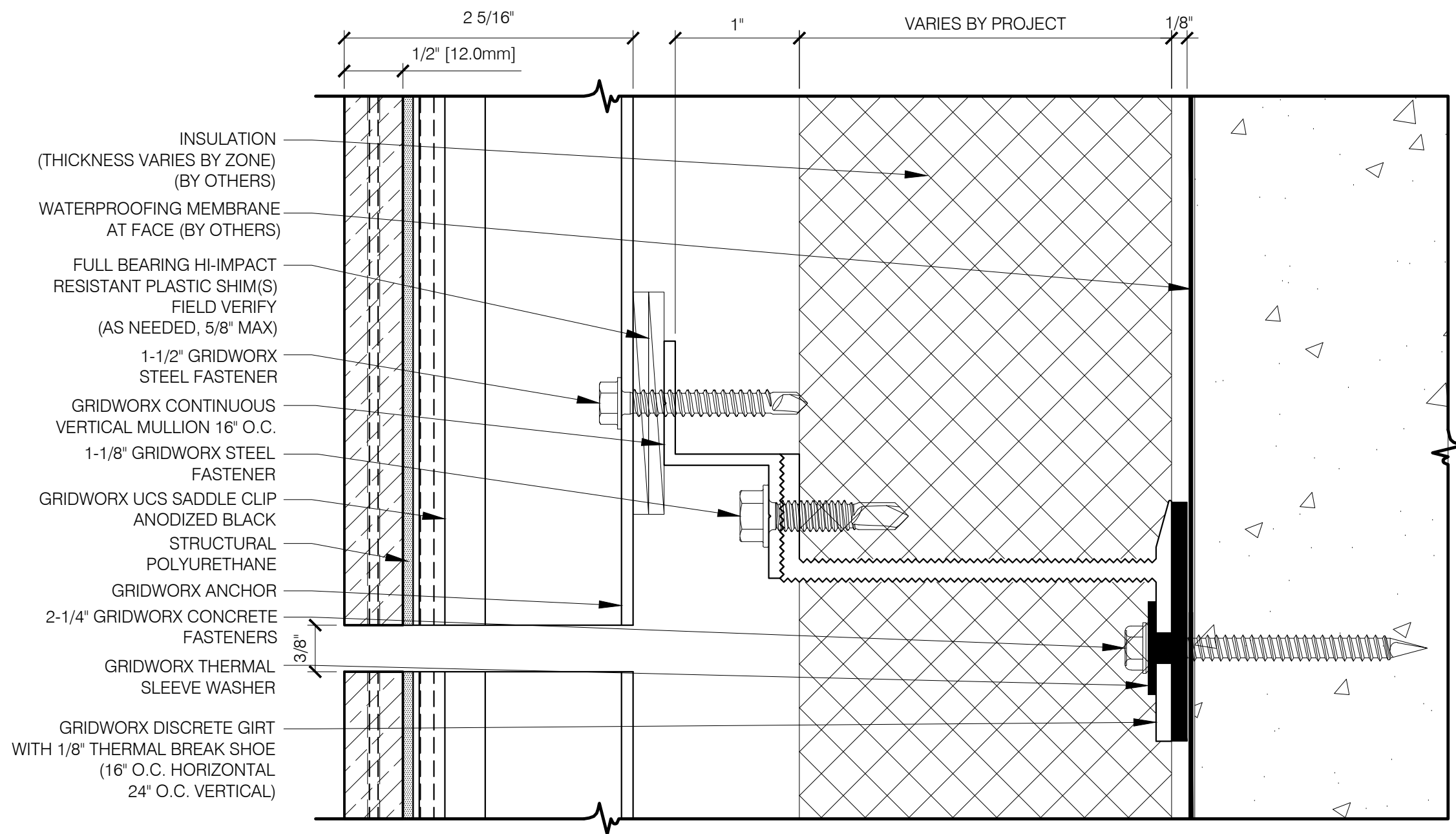
ARCHITECT:

TEL:

FAX:

PRECISION WALL SYSTEMS
10980 ALDER CIRCLE
DALLAS, TEXAS 75238
TEL: 214.774.4820
FAX: 214.482.5883

GRIDWORX
STONE HANGING SYSTEM



GRIDWORX ASHRAE 90.1 UCS - PLANX SYSTEM
 12mm STONE - PLAN VIEW
 3/8" OPEN JOINT - CONCRETE/CMU SUBSTRATE

ASHRAE DETAILS
DATE: XX/XX/XXXX
NOTES: SCALE: 1:1
TITLE:
SHEET: