



MATERIAL EXTERIOR GRADE





MATERIAL EXTERIOR GRADE





MATERIAL EXTERIOR GRADE





MATERIAL EXTERIOR GRADE





MATERIAL EXTERIOR GRADE

MEG WOODGRAIN

604 cs



630 cs



631 cs



633 cs



634 cs



649 cs



674 cs



769 cs



770 cs



771 cs



772 cs



778 cs



779 cs



780 cs



781 cs



782 cs



1384 cs



1387 cs



1388 cs



1389 cs





MATERIAL EXTERIOR GRADE

MEG WOODGRAIN

718 cs



719 cs



748 cs



749 cs



754 cs



755 cs



756 cs



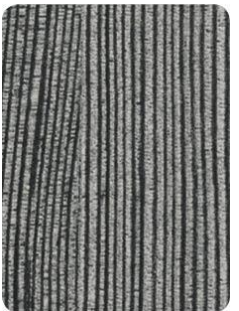
758 cs



759 cs



768 cs

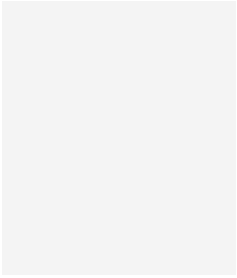




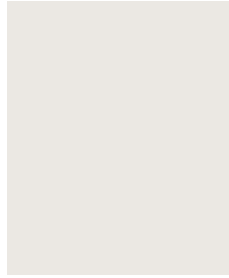
MATERIAL EXTERIOR GRADE

MEG SOLID

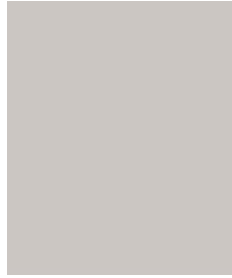
405 SEI



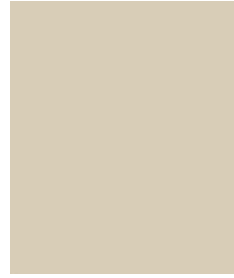
406 SEI



413 SEI



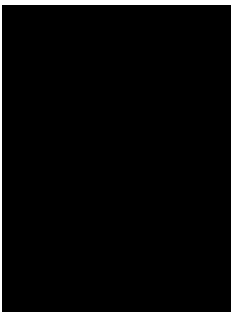
414 SEI



416



421 cs



440 SEI



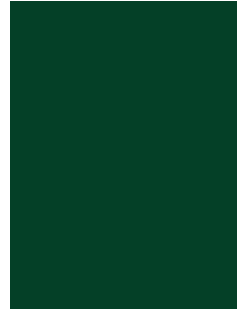
448



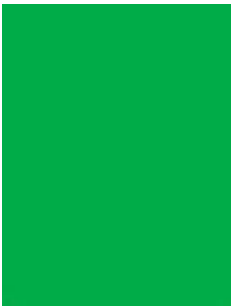
449



450



461



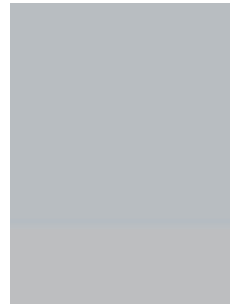
465



474 cs



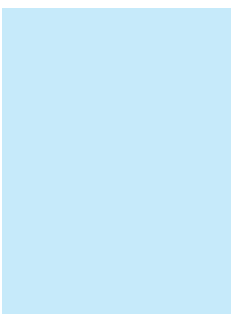
475



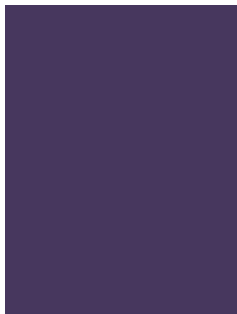
480 SEI



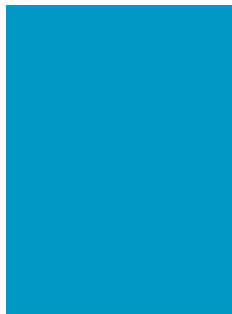
487 SEI



498 SEI



499 SEI



812 SEI



819





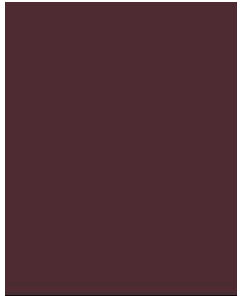
MATERIAL EXTERIOR GRADE

MEG SOLID

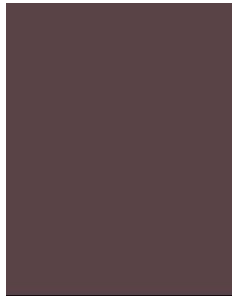
823 SEI



832 SEI



837 SEI



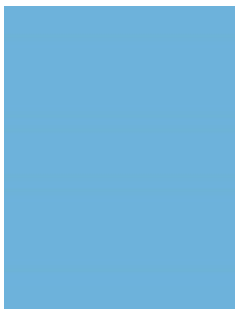
838



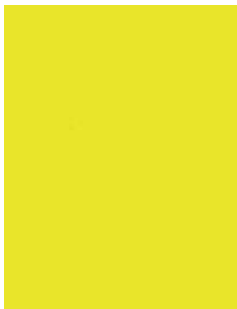
844



847 SEI



848 cs



850 SEI



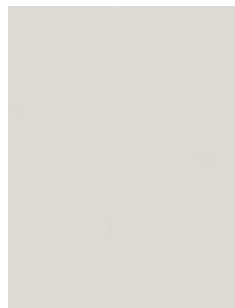
851 SEI



852 SEI



854



859 SEI



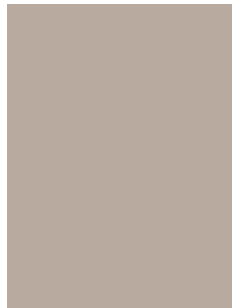
867 SEI



868 SEI



869 SEI



871



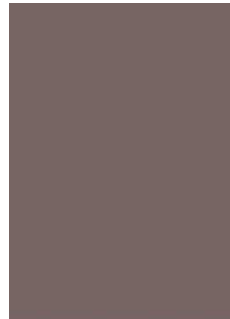
879



891 SEI



893 SEI



894 SEI

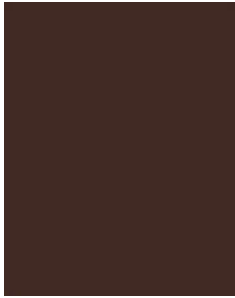




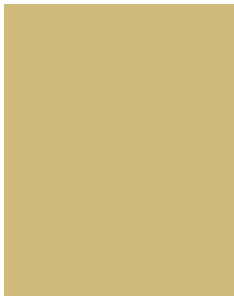
MATERIAL EXTERIOR GRADE

MEG SOLID

898 cs



1801 cs



1804 cs



1810 cs



1812 cs



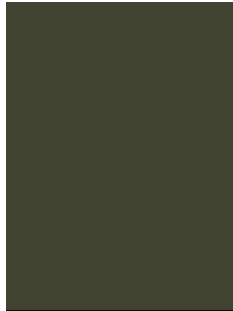
1813



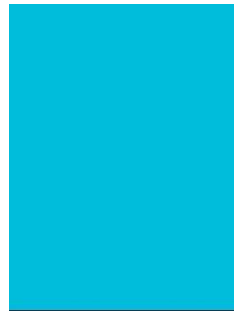
1816 SEI



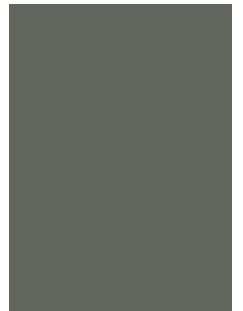
1820 SEI



1824 SEI



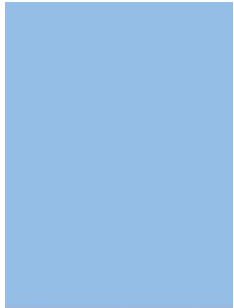
1831 SEI



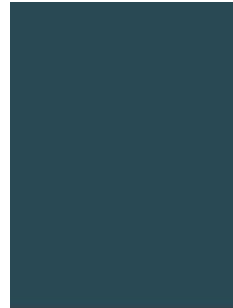
1853 SEI



1860 SEI



1861 SEI



1870 SEI



1883 SEI



1885 SEI



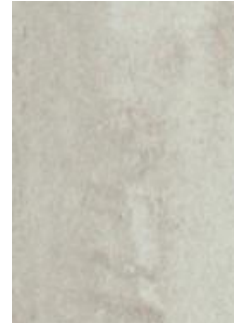
1886 SEI



559



559



1453





MATERIAL EXTERIOR GRADE

design ideas



MATERIAL EXTERIOR GRADE

MEG VISION™





MATERIAL EXTERIOR GRADE

MEG VISION™





MATERIAL EXTERIOR GRADE

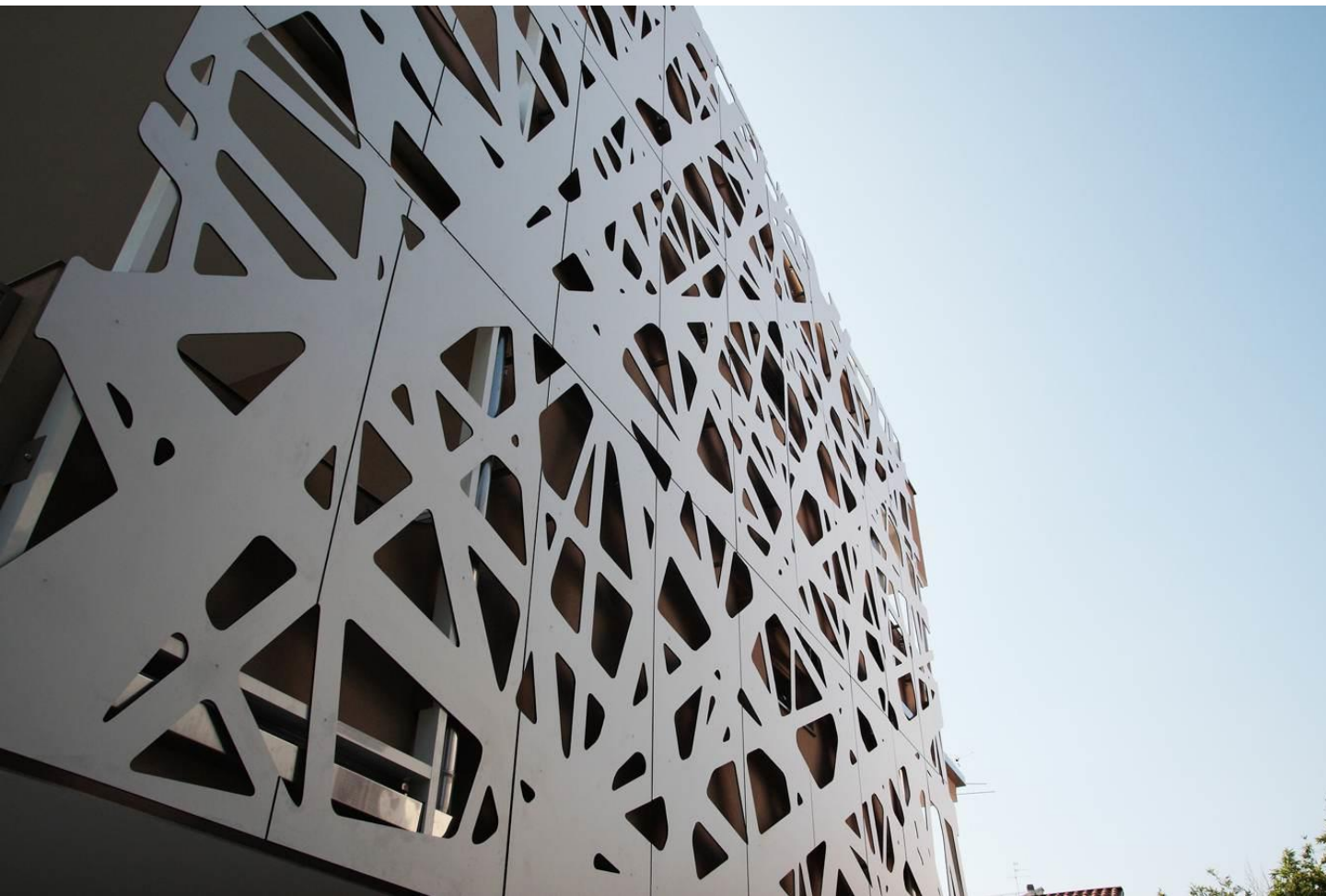
MEG VISION™





MATERIAL EXTERIOR GRADE

MEG VISION™





MATERIAL EXTERIOR GRADE

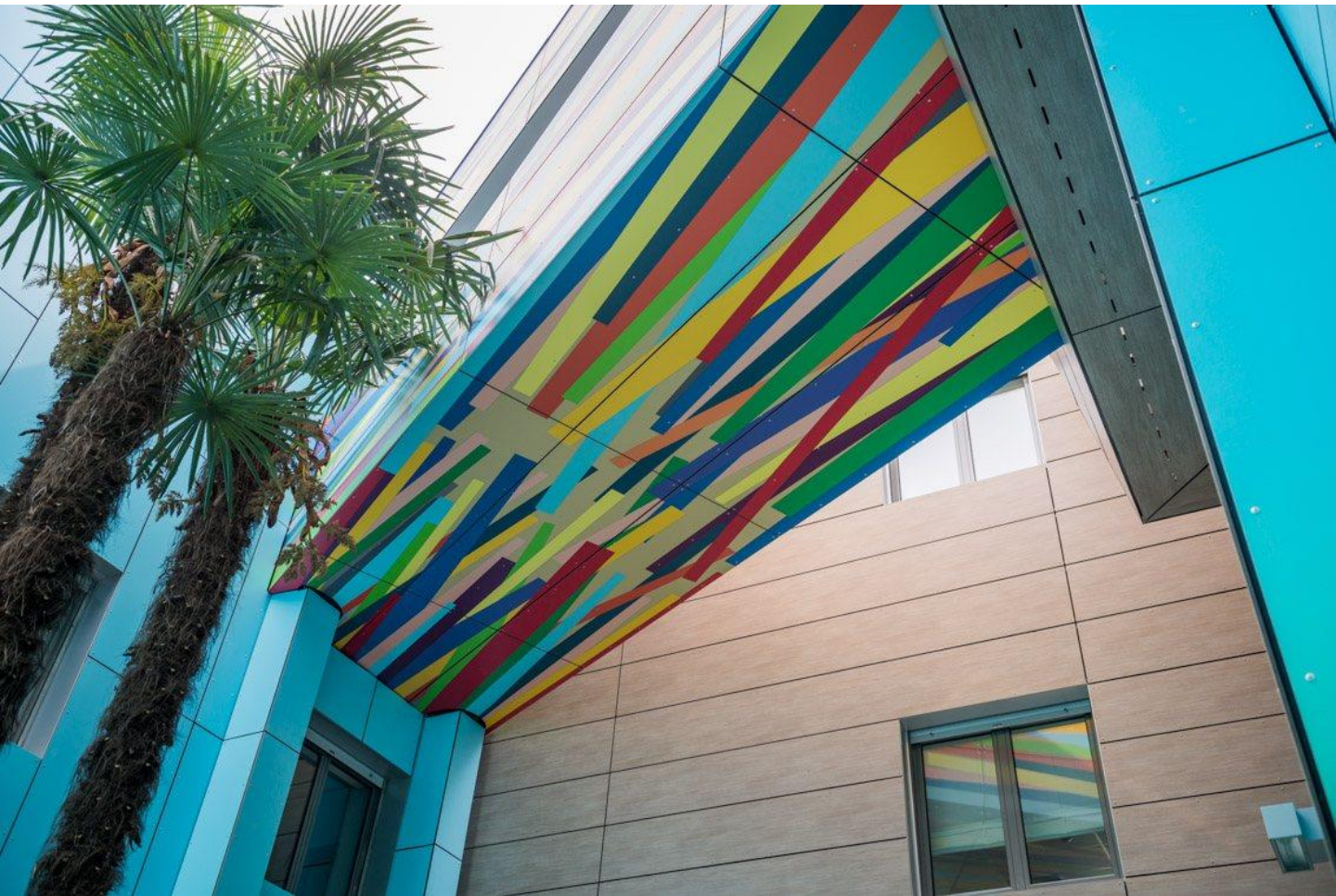
MEG VISION™





MATERIAL EXTERIOR GRADE

MEG VISION™





MATERIAL EXTERIOR GRADE

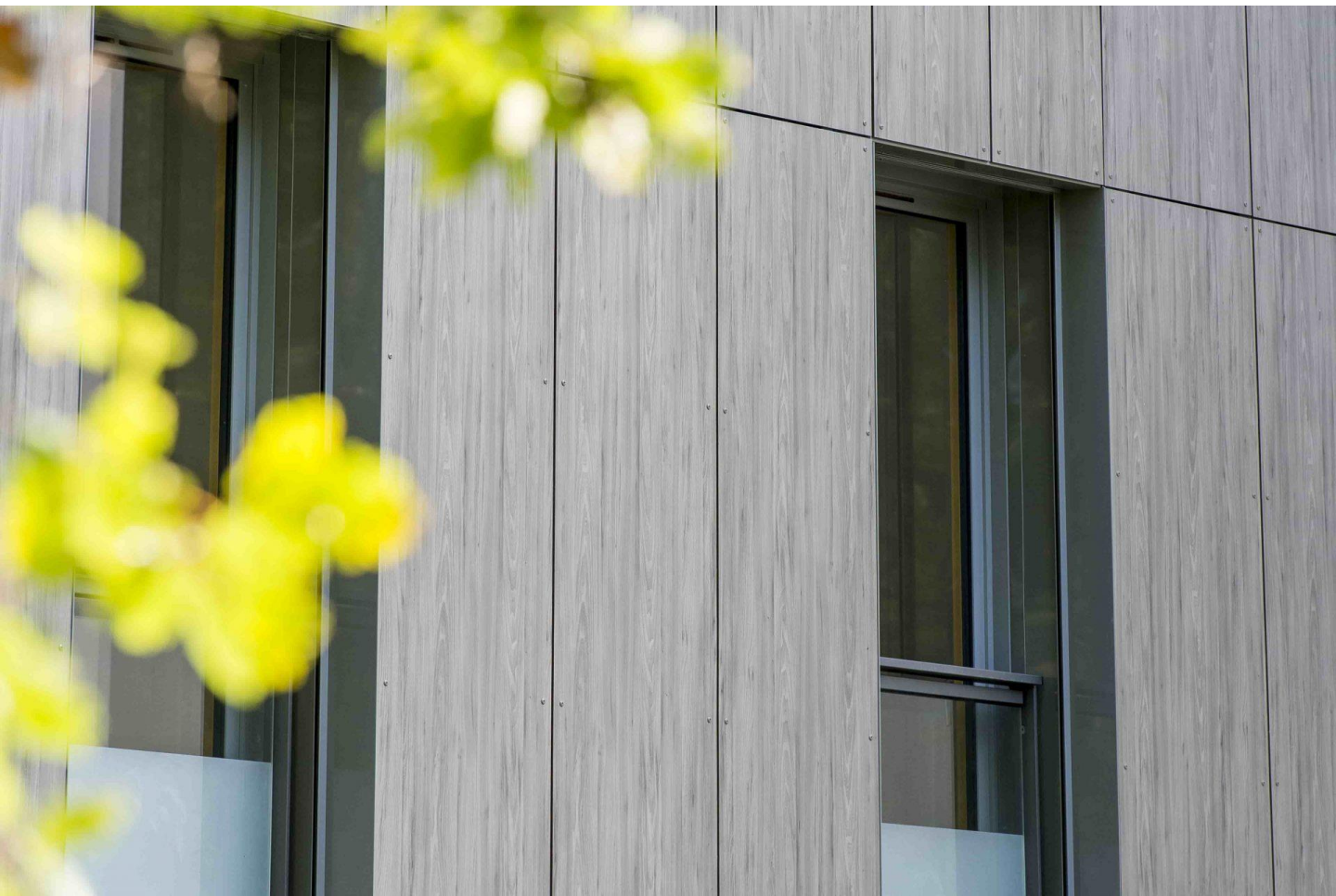
MEG VISION™





MATERIAL EXTERIOR GRADE

MEG VISION™





MATERIAL EXTERIOR GRADE

technical



MATERIAL EXTERIOR GRADE

MEG COMPARISON DATA

Physical Properties					
Thickness		Standards	Unit of Measure	Required Values	Typical Values
	MEG	EN 438-2.5	mm		10.0 ± 0.50
	FUNDERMAX	EN 438-2.5	mm		10.0 ± 0.50
	PARKLEX	EN 438-2.5	mm		10.0 ± 0.50
	PRODEMA	EN 438-2.5	mm		10.0 ± 0.50
	TRESPA	EN 438-2.5	mm		10.0 ± 0.50
Flatness – Panel Level of Flatness per m					
	MEG	EN 438-2.9	mm/m		≤ 3
	FUNDERMAX	N/A			
	PARKLEX	EN 438-2.9	mm/m		≤ 3
	PRODEMA	EN 438-2.9	mm/m		≤ 3
	TRESPA	EN 438-2.9	mm/m		≤ 2
Density – Panel Minimum Density					
	MEG	EN ISO 1183	Gr/cm ³	≥ 1.35	≥ 1.35
	FUNDERMAX	EN ISO 1183.1	g/cm ³	≥ 1.35	≥ 1.35
	PARKLEX	EN ISO 1183	g/cm ³	≥ 1.35	≥ 1.35
	PRODEMA	EN ISO 1183	g/cm ³	≥ 1.35	≥ 1.35
	TRESPA	EN ISO 1183	Gr/cm ³	≥ 1.35	≥ 1.35
		ASTM D792.08	Gr/cm ³	≥ 1.35	≥ 1.35
Modulus of Elasticity – Panel Tendency to Deform Along Axis When Opposing Forces are Applied Along that Axis; Ratio of Tensile Stress to Tensile Strain					
	MEG	EN ISO 178	MPa	L ≥ 10,000	L ≥ 14,000
				T ≥ 9,000	T ≥ 10,000
	FUNDERMAX	EN ISO 178	MPa	T ≥ 9,000	T ≥ 9,000
	PARKLEX	EN ISO 178	MPa	T ≥ 9,000	T ≥ 9,000
	PRODEMA	EN ISO 178	MPa	T ≥ 9,000	T ≥ 9,000
	TRESPA	EN ISO 178	MPa	T ≥ 9,000	T ≥ 9,000
ASTM D638.08		PSI		T ≥ 1305000	
Tensile Strength – Panel Resistance to Rupture Under Tension					
	MEG	EN ISO 527.2	MPa	L ≥ 100	L ≥ 100
				T ≥ 70	T ≥ 70
	FUNDERMAX	N/A			
	PARKLEX	EN ISO 527.2	MPa	T ≥ 70	T ≥ 60
	PRODEMA	EN ISO 527.2	MPa	T ≥ 70	T ≥ 60
	TRESPA	EN ISO 527.2	MPa	T ≥ 70	T ≥ 70
ASTM D 638.08		PSI		T ≥ 10,150	



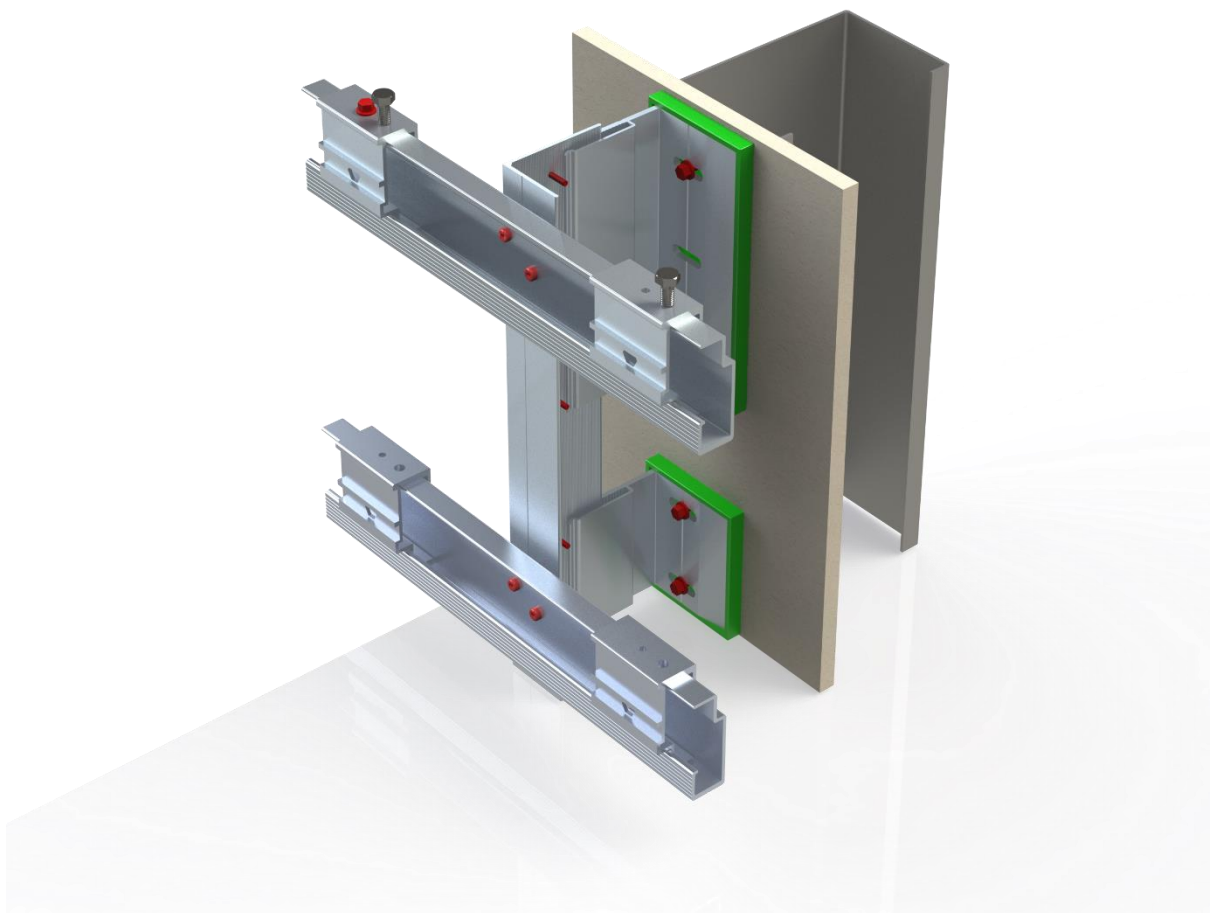
MATERIAL EXTERIOR GRADE

installation



MATERIAL EXTERIOR GRADE

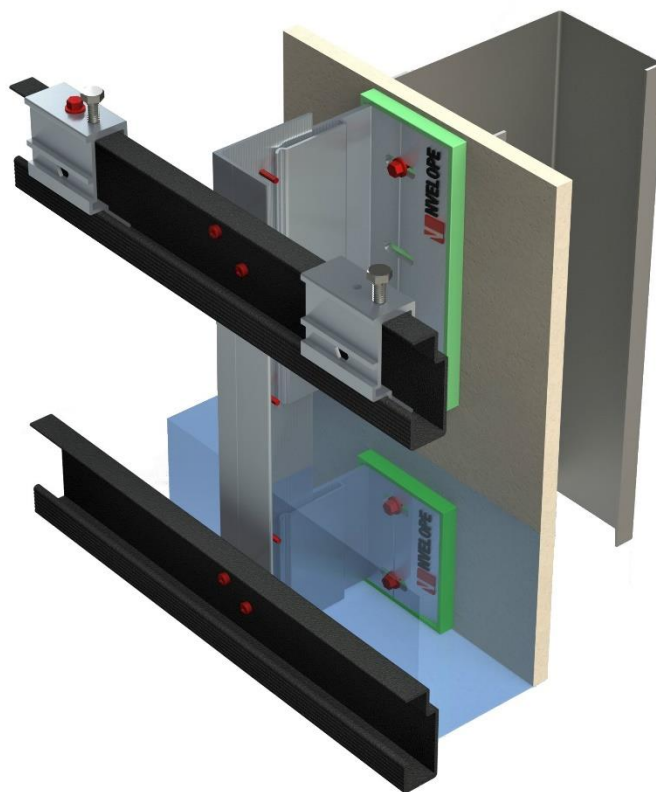
CONCEALED FIX





MATERIAL EXTERIOR GRADE

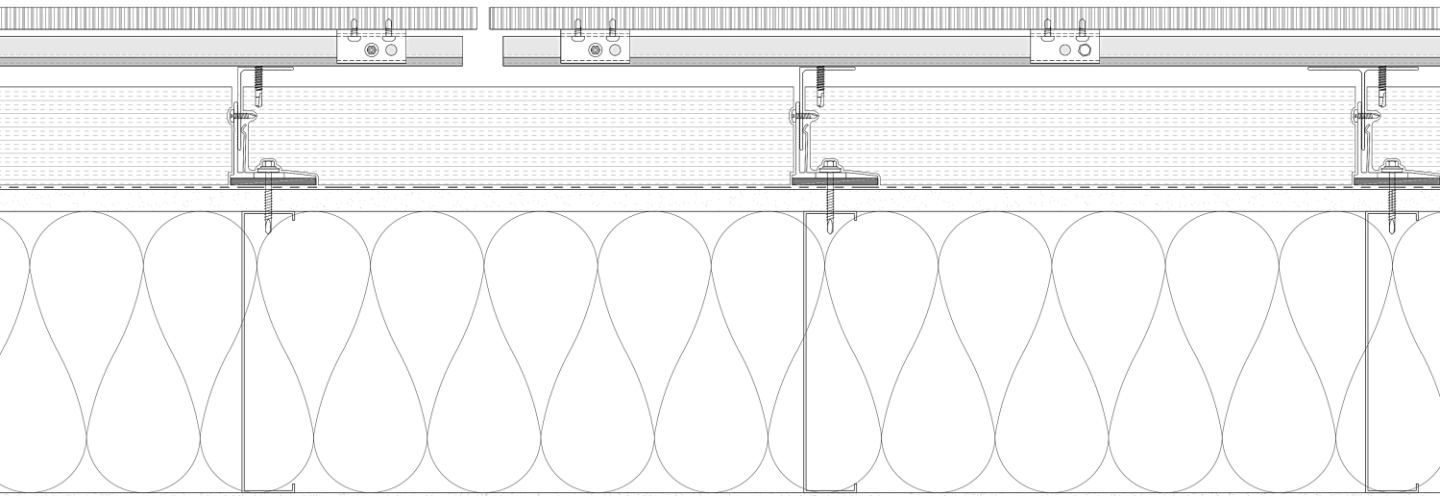
CONCEALED FIX (ANODIZED OR PAINTED RAILS)





MATERIAL EXTERIOR GRADE

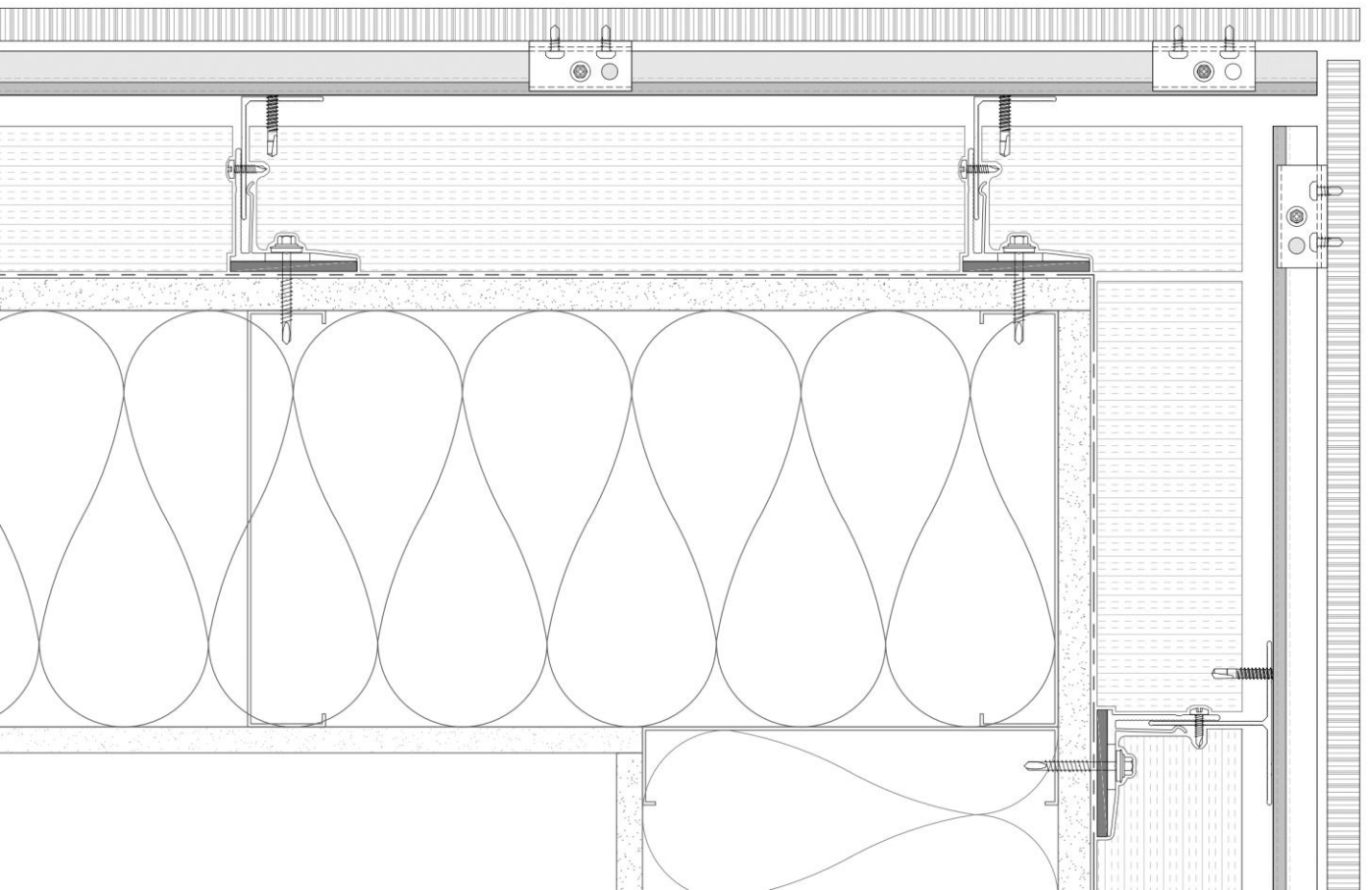
CONCEALED FIX





MATERIAL EXTERIOR GRADE

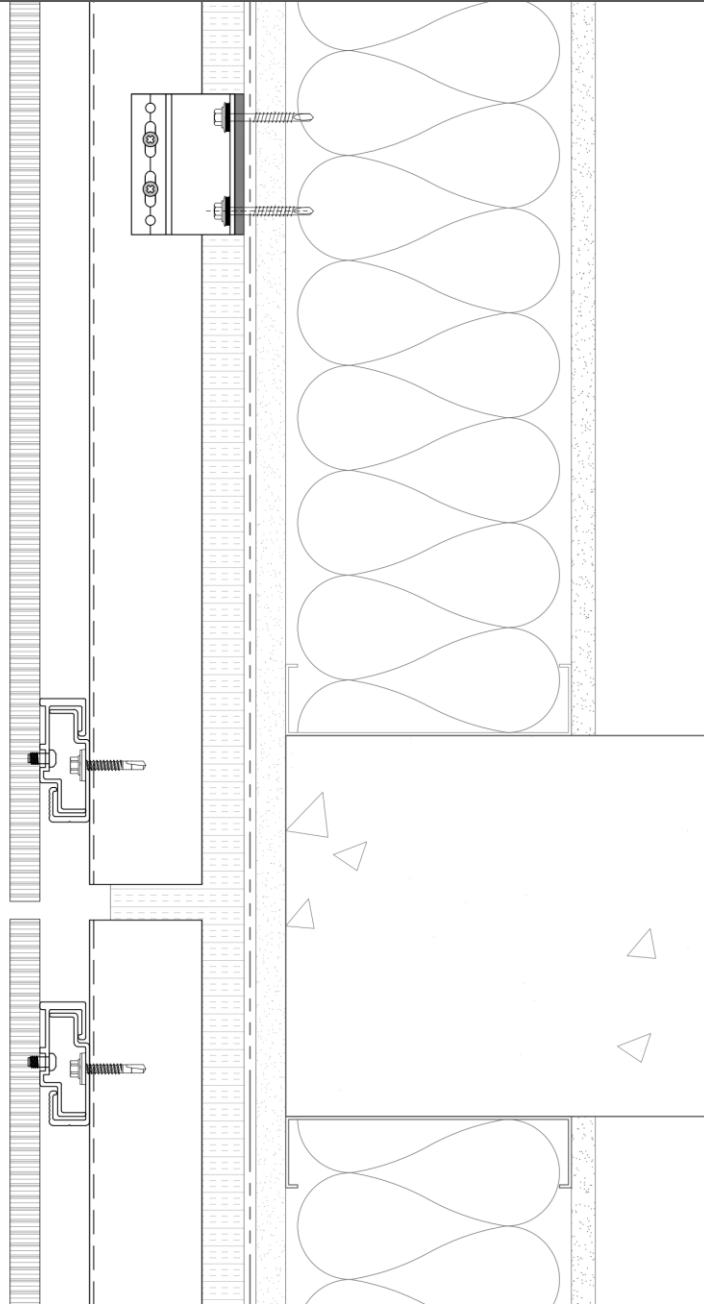
CONCEALED FIX





MATERIAL EXTERIOR GRADE

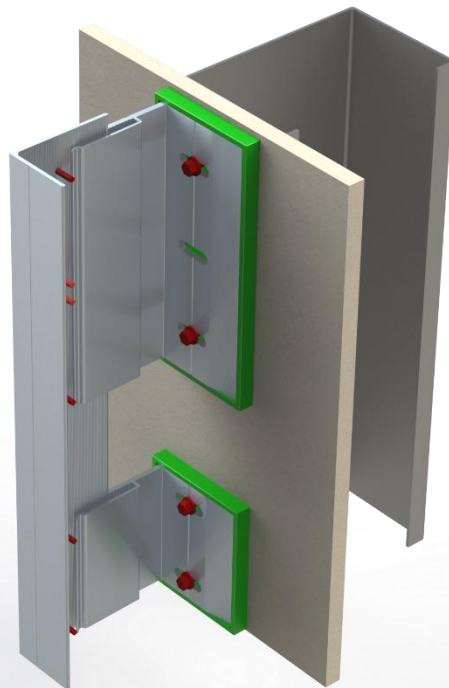
CONCEALED FIX





MATERIAL EXTERIOR GRADE

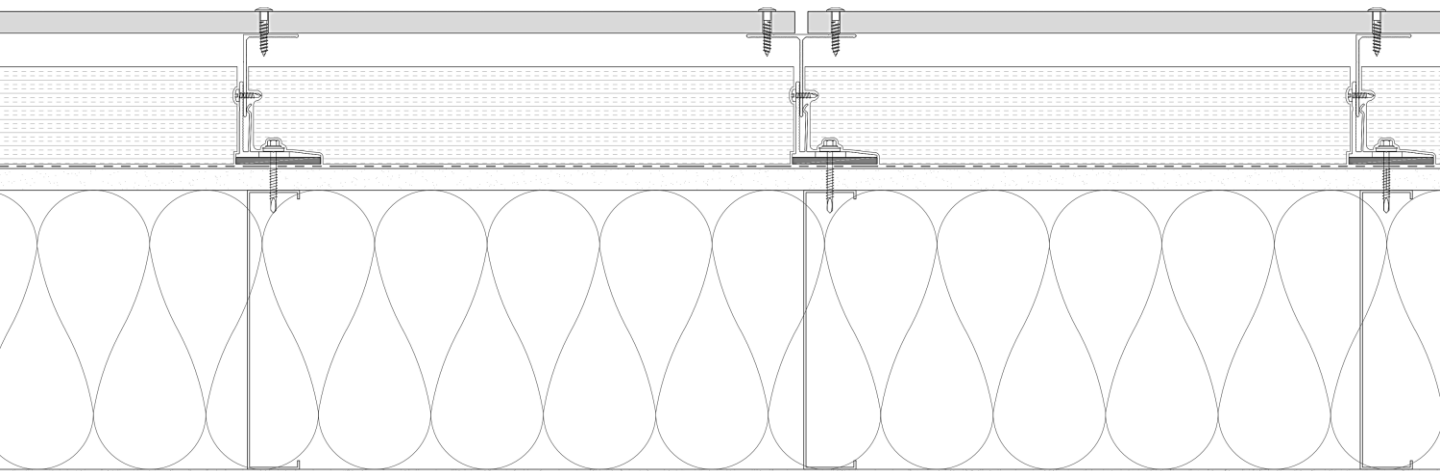
FACE FIX (VERTICAL)





MATERIAL EXTERIOR GRADE

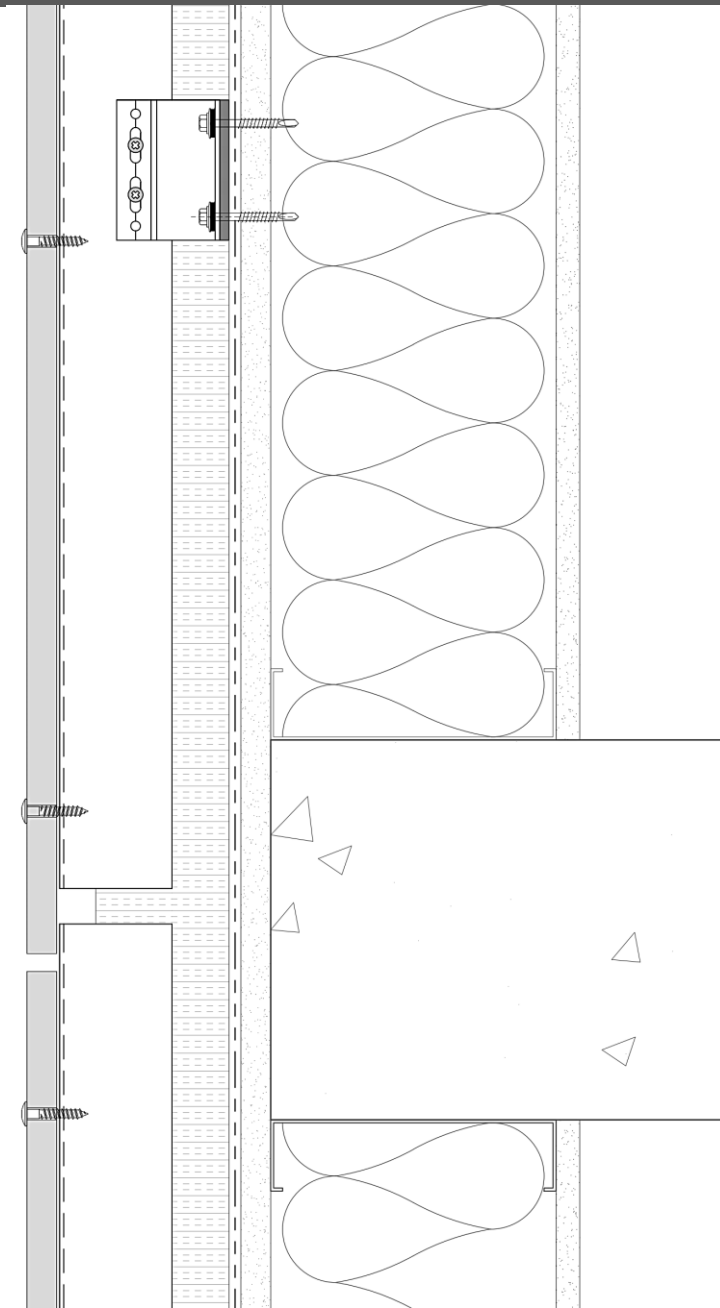
FACE FIX (VERTICAL)





MATERIAL EXTERIOR GRADE

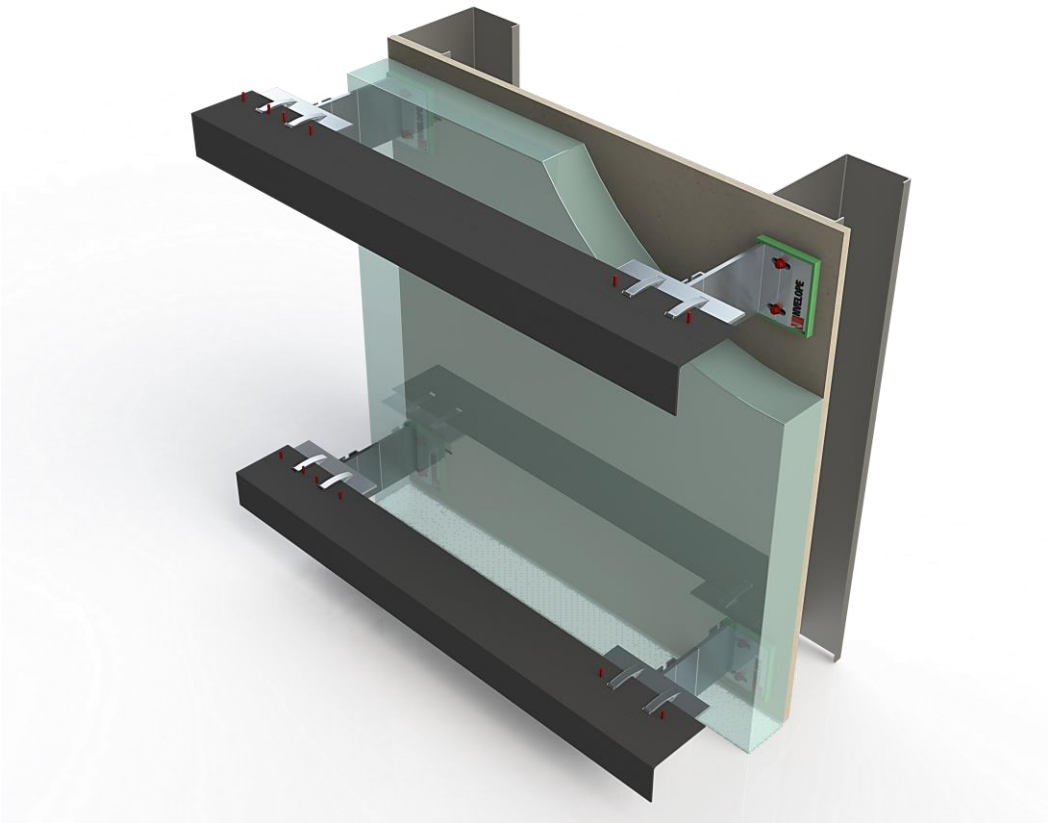
FACE FIX (VERTICAL)





MATERIAL EXTERIOR GRADE

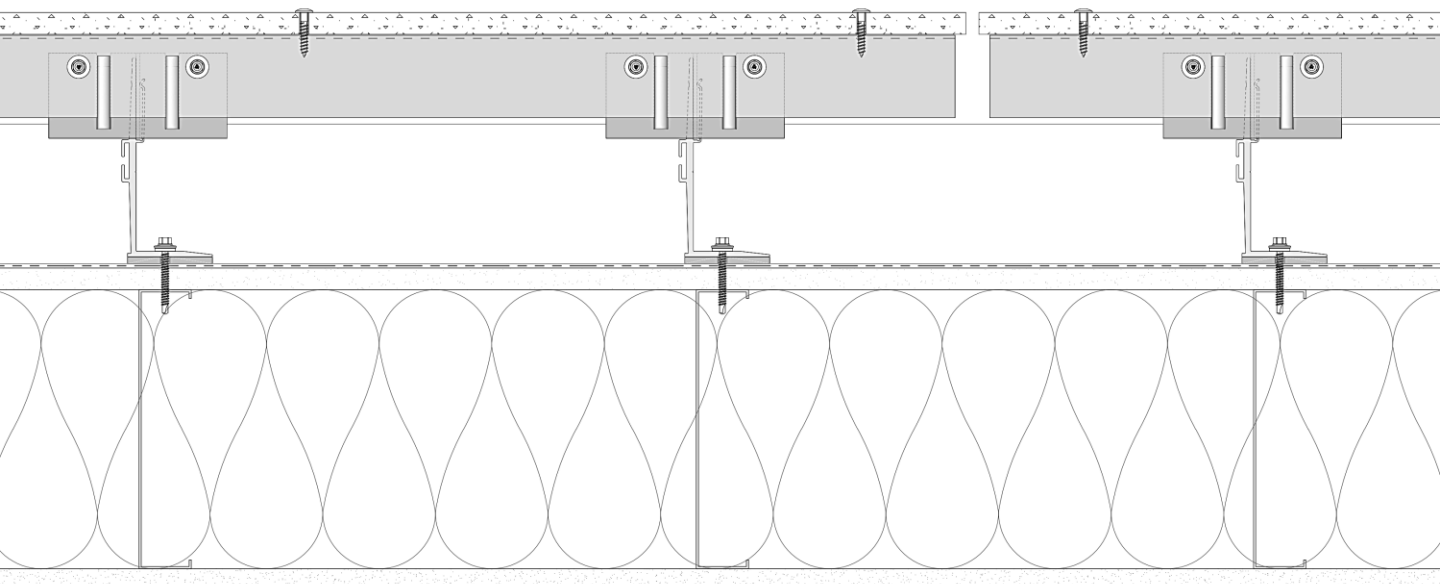
FACE FIX (HORIZONTAL)





MATERIAL EXTERIOR GRADE

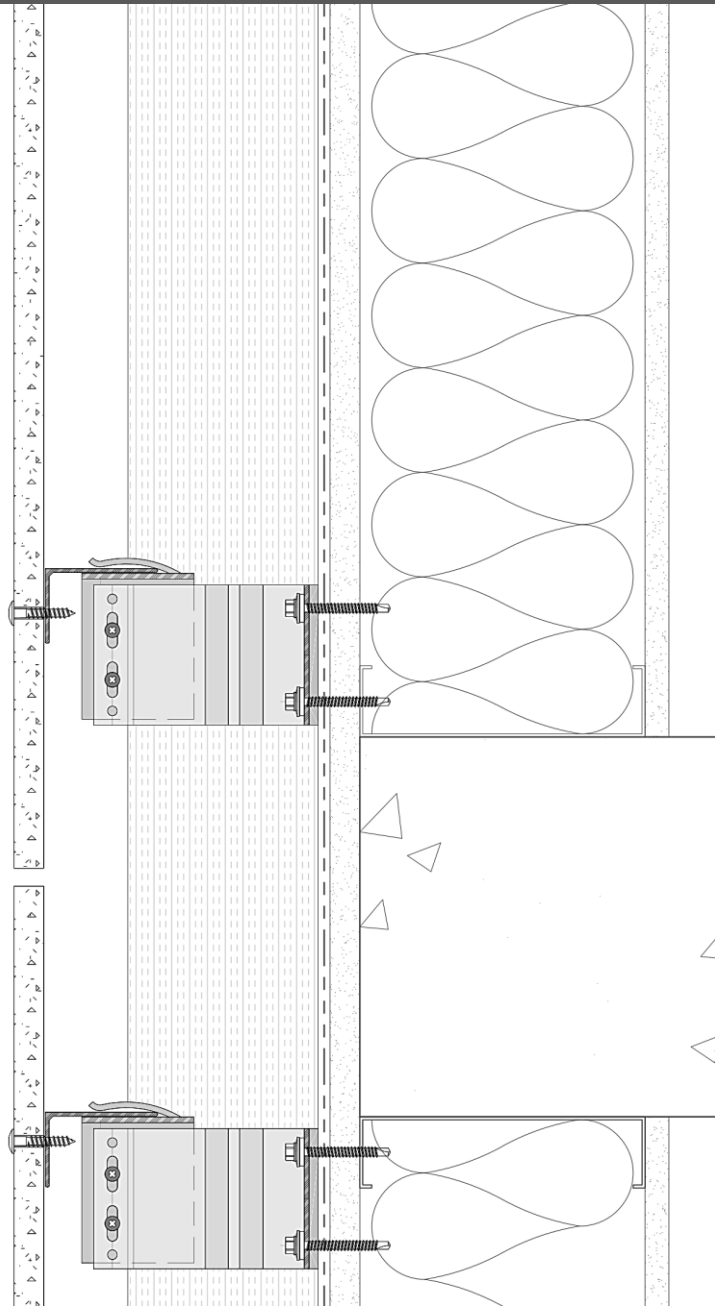
FACE FIX (HORIZONTAL)





MATERIAL EXTERIOR GRADE

FACE FIX (HORIZONTAL)





MATERIAL EXTERIOR GRADE

ABET LAMINATI



Unlimited selection

mödfacade

www.modfacade.com