

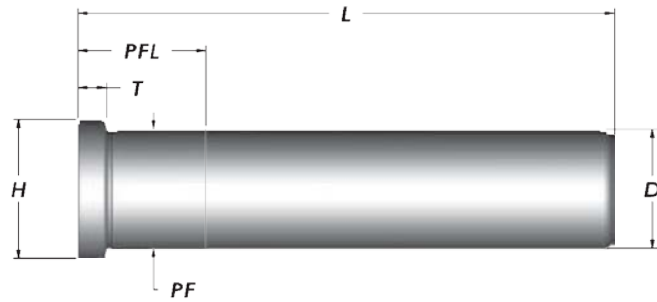


Leader Pins

Hardened and Precision
Ground 1-1/2" - 3"
Diameters

COMPONENT GUYS INC.

General Dimensions and Tolerances				
Nominal Diameter	D +0.000 -0.0005	PF +0.0005 -0.0000	H +0.000 -0.010	T +0.000 -0.005
1-1/2	1.499	1.501	1.740	5/16
2"	1.999	2.001	2.240	5/16
2-1/2	2.499	2.501	2.740	5/16
3"	2.999	3.001	3.365	1/2



L	D=1-1/2"		D=2"		D=2-1/2"		D=3"		L
	PFL	Cat. No.	PFL	Cat. No.	PFL	Cat. No.	PFL	Cat. No.	
3-3/4	1-3/8	5402-GL							3-3/4
4-1/4	1-3/8	5403-GL							4-1/4
4-3/4	1-3/8	5404-GL							4-3/4
5-1/4	1-3/8	5405-GL							5-1/4
5-3/4	1-3/8	5406-GL	1-7/8	5606-GL	2-3/8	5806-GL	2-7/8		5-3/4
6-1/4	1-3/8	5407-GL							6-1/4
6-3/4	1-3/8	5408-GL	1-7/8	5608-GL	2-3/8	5808-GL	2-7/8		6-3/4
7-1/4									7-1/4
7-3/4	1-7/8	5410-GL	1-7/8	5610-GL	2-3/8	5810-GL	2-7/8		7-3/4
8-1/4									8-1/4
8-3/4	1-7/8	5412-GL	1-7/8	5612-GL	2-3/8	5812-GL	2-7/8		8-3/4
9-1/4									9-1/4
9-3/4	1-7/8	5414-GL	1-7/8	5614-GL	2-3/8	5814-GL	2-7/8		9-3/4
10-1/4									10-1/4
10-3/4	1-7/8	5416-GL	1-7/8	5616-GL	2-3/8	5816-GL	2-7/8		10-3/4
11-1/4									11-1/4
11-3/4	1-7/8	5418-GL	1-7/8	5618-GL	2-3/8	5818-GL	2-7/8		11-3/4
12-1/4									12-1/4
12-3/4	1-7/8	5420-GL	1-7/8	5620-GL	2-3/8	5820-GL	2-7/8	6020-GL	12-3/4
13-3/4	1-7/8	5422-GL	1-7/8	5622-GL	2-3/8	5822-GL	2-7/8		13-3/4
14-3/4	1-7/8	5424-GL	1-7/8	5624-GL	2-3/8	5824-GL	2-7/8	6024-GL	14-3/4
15-3/4	1-7/8	5426-GL	1-7/8	5626-GL	2-3/8	5826-GL	2-7/8		15-3/4
16-3/4			2-3/8	5628-GL	2-3/8	5828-GL	2-7/8	6028-GL	16-3/4
18-3/4			2-3/8	5632-GL	2-3/8	5832-GL	2-7/8	6032-GL	18-3/4
36	2-3/8	5436-GL	2-3/8	5636-GL	2-3/8	5836-GL	2-7/8	6036-GL	36