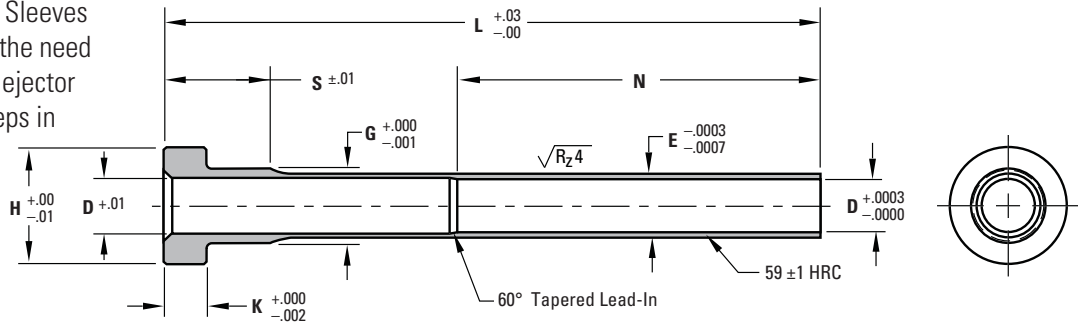


Thin Wall Ejector Sleeves and Sleeve Extensions

Thin Wall Sleeves

DME Standard Thin Wall Sleeves reduce cost by replacing the need to buy expensive custom ejector sleeves or to machine steps in standard sleeves.

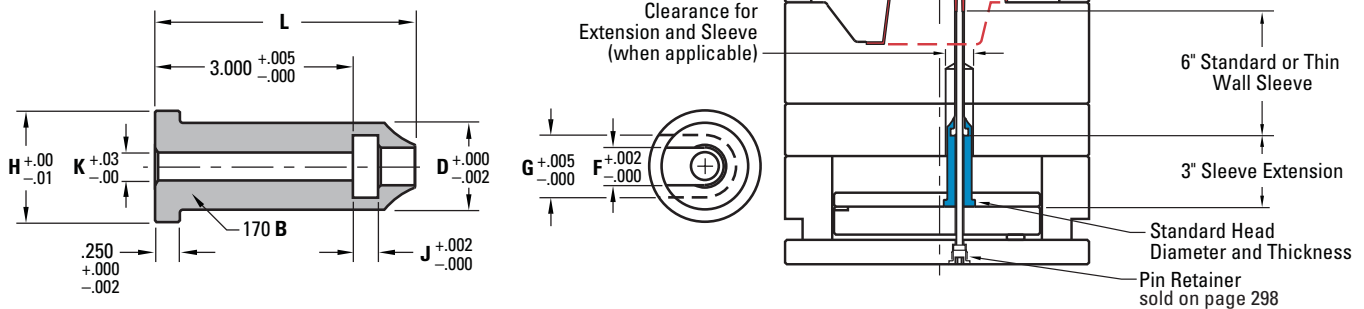


ITEM NUMBER		Ø D I.D.		E	G	S SHOULDER LENGTH	H HEAD DIA	K HEAD THICK.	N BEARING LENGTH
4"	6"								
TWS13M4	TWS13M6	3/32	(.0937)	.1563	.188	.500	.37	.187	1.75
TWS15M4	TWS15M6	1/8	(.1250)	.1875	.219		.40		
TWS17M4	TWS17M6	5/32	(.1562)	.2187	.250		.43		
TWS21M4	TWS21M6	3/16	(.1875)	.2500	.312	.625	.50	.250	2.50
TWS23M4	TWS23M6	7/32	(.2187)	.2813	.344		.56		
TWS25M4	TWS25M6	1/4	(.2500)	.3125	.375		.62		
TWS29M4	TWS29M6	5/16	(.3125)	.3750	.438		.68		
TWS33M4	TWS33M6	3/8	(.3750)	.4375	.500		.75		

Electroless nickel coated .00003"–.00007" thick A2 58-60 HRC.
To achieve longer lengths, use Sleeve Extensions.

Sleeve Extensions

Compatible with all industry-standard sleeves.
DME Sleeve Extensions.



ITEM NUMBER	NOMINAL SLEEVE I.D.	Ø D O.D.	Ø F	G	K	J	H HEAD DIA.	L REF	
SSE13M3	3/32	(.0937)	.625	.193	.385	.17	.188	.875	3.500
SSE15M3	1/8	(.1250)	.625	.224	.416	.17	.188	.875	3.500
SSE17M3	5/32	(.1562)	.625	.255	.448	.17	.188	.875	3.500
SSE21M3	3/16	(.1875)	.875	.318	.520	.28	.251	1.125	3.625
SSE23M3	7/32	(.2187)	.875	.349	.570	.28	.251	1.125	3.625
SSE25M3	1/4	(.2500)	.875	.380	.630	.28	.251	1.125	3.625
SSE29M3	5/16	(.3125)	1.000	.443	.698	.39	.251	1.250	3.625
SSE33M3	3/8	(.3750)	1.000	.505	.760	.39	.251	1.250	3.625

AISI 1215 (170 Brinell)
Black oxide

US Patent No. 6,872,069