

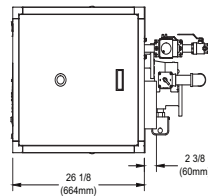
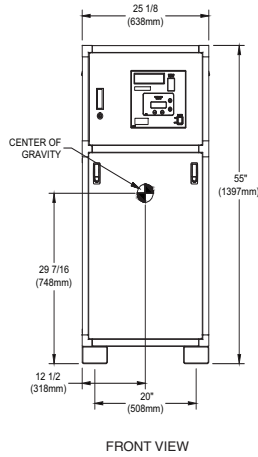
CODE OPTIONS

CSD-1	Manual Reset LWCO
Kentucky	200°F Maximum Operating Control and High Limit

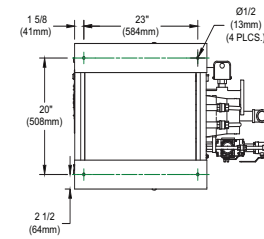
NOTE: Dimensions are approximate and should not be used to "rough-in" equipment.

- * Add circulator amps.
- ** For incoming gas pressures lower than 2" W.C. natural or propane, consult factory.

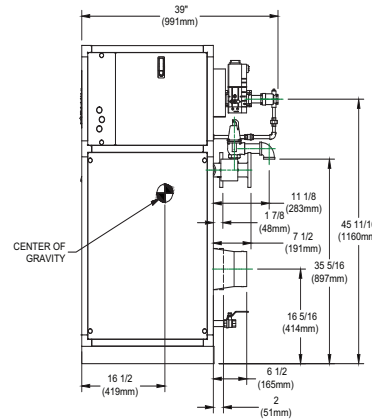
INDOOR UNIT



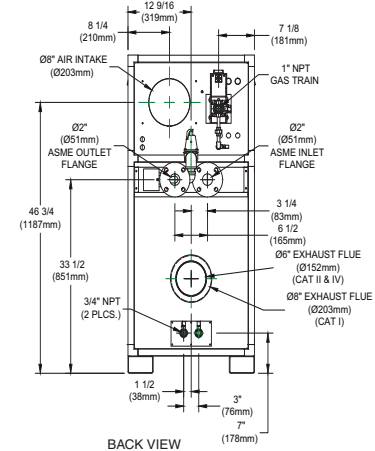
TOP VIEW



BOTTOM VIEW



SIDE VIEW



BACK VIEW

RSUB-56-K

A.G.A. CERTIFIED RATINGS & CAPACITIES

Fuel Type	Natural/Propane Gas	Boiler FLA	4.4*
Input BTU/hr.	750,000 / 220 kW	Min. Gas Pressure Required	2" W.C.**
Output BTU/hr.	640,500 / 188 kW	Max. Gas Pressure Allowed	14" W.C.
Electrical Requirements	(L1,NEU,GND) 120VAC/ 1 ph/ 60 hz	Operating Weight	585 lbs. / 266 kg.

TEMPERATURE RISE / PRESSURE DROP

20° F / 11.1° C		25° F / 13.9° C		30° F / 16.7° C		35° F / 19.4° C									
Flow Rate	Pressure Drop	Flow Rate	Pressure Drop	Flow Rate	Pressure Drop	Flow Rate	Pressure Drop								
GPM	L/s	Ft	kPa	GPM	L/s	Ft	kPa	GPM	L/s	Ft	kPa				
65.3	4.1	1.63	4.8	52.2	3.3	1.08	3.2	43.5	2.7	0.77	2.3	37.3	2.4	0.58	1.7

BOILER TRIM & CONTROLS

Main Gas Valve	Dungs MBC-SE	Air Switch	Cleveland NS2
Firing Valve	1"	Blower Motor	Fasco 1/2 hp - FLA 2.3
Ignition Control	Honeywell RM7895C	Relief Valve - MW	3/4" x 3/4" set @ 125 psi
Operating Control	HeatNet™	Relief Valve - MB	3/4" x 3/4" set @ 50 psi
High Limit	Jumo	Flow Switch	TACO
Main Ball Valve	1"	Solenoid Valve w/ Reg	CV100

RECOVERY CAPACITY

40°F	22° C	60°F	33° C	80°F	44° C	100°F	56° C	120°F	67° C	140°F	78° C
1922	7277	1282	4851	961	3638	769	2911	641	2426	549	2079

A.S.M.E.

ASME Sect IV Htg Surface	97.79 Sq. Ft. / 9.08 Sq. M.	Design Data	Max. 160 psig & 250° F
Water Volume	3.7 gal / 14.01 (liters)		

REP FIRM _____

SUBMITTED BY _____

JOB NAME _____

ARCHITECT _____

ENGINEER _____

CONTRACTOR _____

DATE _____

FUTERA III 750

Category I, II or IV Appliance

(see Installation and Operation Manual for venting information)

A Division of Mestek, Inc.
Westfield, MA 01085
(413) 568-9571