

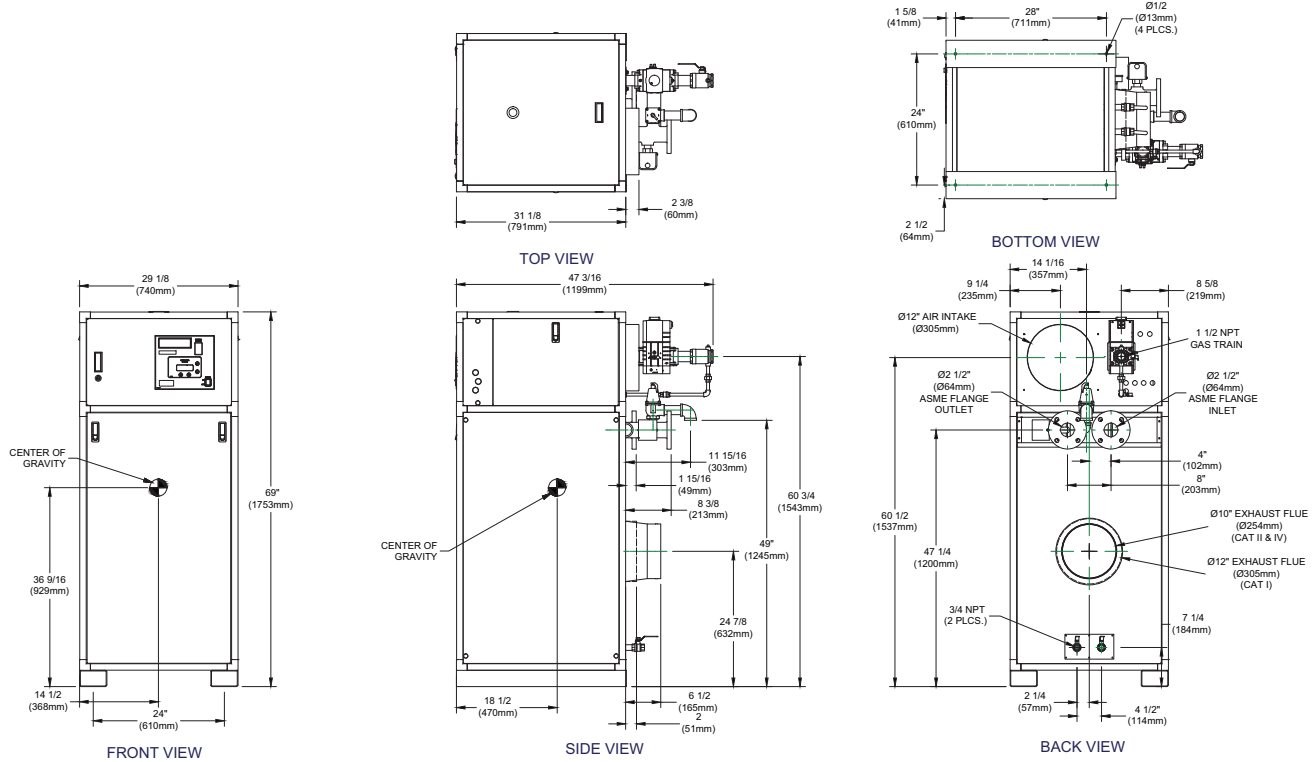
**CODE OPTIONS**

<b>CSD-1</b>	Manual Reset LWCO
<b>Kentucky</b>	200°F Maximum Operating Control and High Limit

**NOTE:** Dimensions are approximate and should not be used to "rough-in" equipment.

\* Add circulator amps.  
 \*\* For incoming gas pressures lower than 2" W.C. natural or propane, consult factory.

**INDOOR UNIT**



RSUB-61-K

**A.G.A. CERTIFIED RATINGS & CAPACITIES**

<b>Fuel Type</b>	Natural/Propane Gas	<b>Boiler FLA</b>	11.3*
<b>Input BTU/hr.</b>	1,999,000 / 586 kW	<b>Min. Gas Pressure Required</b>	2" W.C.**
<b>Output BTU/hr.</b>	1,704,000 / 499 kW	<b>Max. Gas Pressure Allowed</b>	14" W.C.
<b>Electrical Requirements</b>	(L1,NEU,GND) 120VAC/ 1 ph/ 60 hz	<b>Operating Weight</b>	1002 lbs. / 455 kg.

**TEMPERATURE RISE / PRESSURE DROP**

25° F / 13.9° C		30° F / 16.7° C		35° F / 19.4° C							
Flow Rate	Pressure Drop	Flow Rate	Pressure Drop	Flow Rate	Pressure Drop						
GPM	L/s	Ft	kPa	GPM	L/s	Ft	kPa	GPM	L/s	Ft	kPa
139.2	8.8	5.63	16.6	116.0	7.3	4.01	11.8	99.4	6.3	3.02	8.9

**BOILER TRIM & CONTROLS**

<b>Main Gas Valve</b>	Dungs MBC-SE	<b>Air Switch</b>	Cleveland NS2
<b>Firing Valve</b>	1 1/2"	<b>Blower Motor</b>	Fasco 1 hp - FLA 3.0
<b>Ignition Control</b>	Honeywell RM7895C	<b>Relief Valve - MW</b>	3/4" x 3/4" set @ 125 psi
<b>Operating Control</b>	HeatNet™	<b>Relief Valve - MB</b>	1" x 1 1/4" set @ 50 psi
<b>High Limit</b>	Jumo	<b>Flow Switch</b>	TACO
<b>Main Ball Valve</b>	1 1/2"	<b>Solenoid Valve w/ Reg</b>	CV100

**RECOVERY CAPACITY**

40°F	22° C	60°F	33° C	80°F	44° C	100°F	56° C	120°F	67° C	140°F	78° C
5114	19359	3409	12906	2557	9679	2046	7744	1705	6453	1461	5531

**A.S.M.E.**

<b>ASME Sect IV Htg Surface</b>	215.98 Sq. Ft. / 20.06 Sq. M.	<b>Design Data</b>	Max. 160 psig & 250° F
<b>Water Volume</b>	5.7 gal / 21.58 (liters)		

**REP FIRM** \_\_\_\_\_

**SUBMITTED BY** \_\_\_\_\_

**JOB NAME** \_\_\_\_\_

**ARCHITECT** \_\_\_\_\_

**ENGINEER** \_\_\_\_\_

**CONTRACTOR** \_\_\_\_\_

**DATE** \_\_\_\_\_

**FUTERA III 2000**

**Category I, II, or IV Appliance**

(see Installation and Operation Manual for venting information)

A Division of Mestek, Inc.  
Westfield, MA 01085  
(413) 568-9571