

3M Architectural Markets
3M™ DI-NOC™ Collection



3M™ DI-NOC™ Architectural Finishes

3M™ DI-NOC™ most trendy and popular
patterns directly from stock!

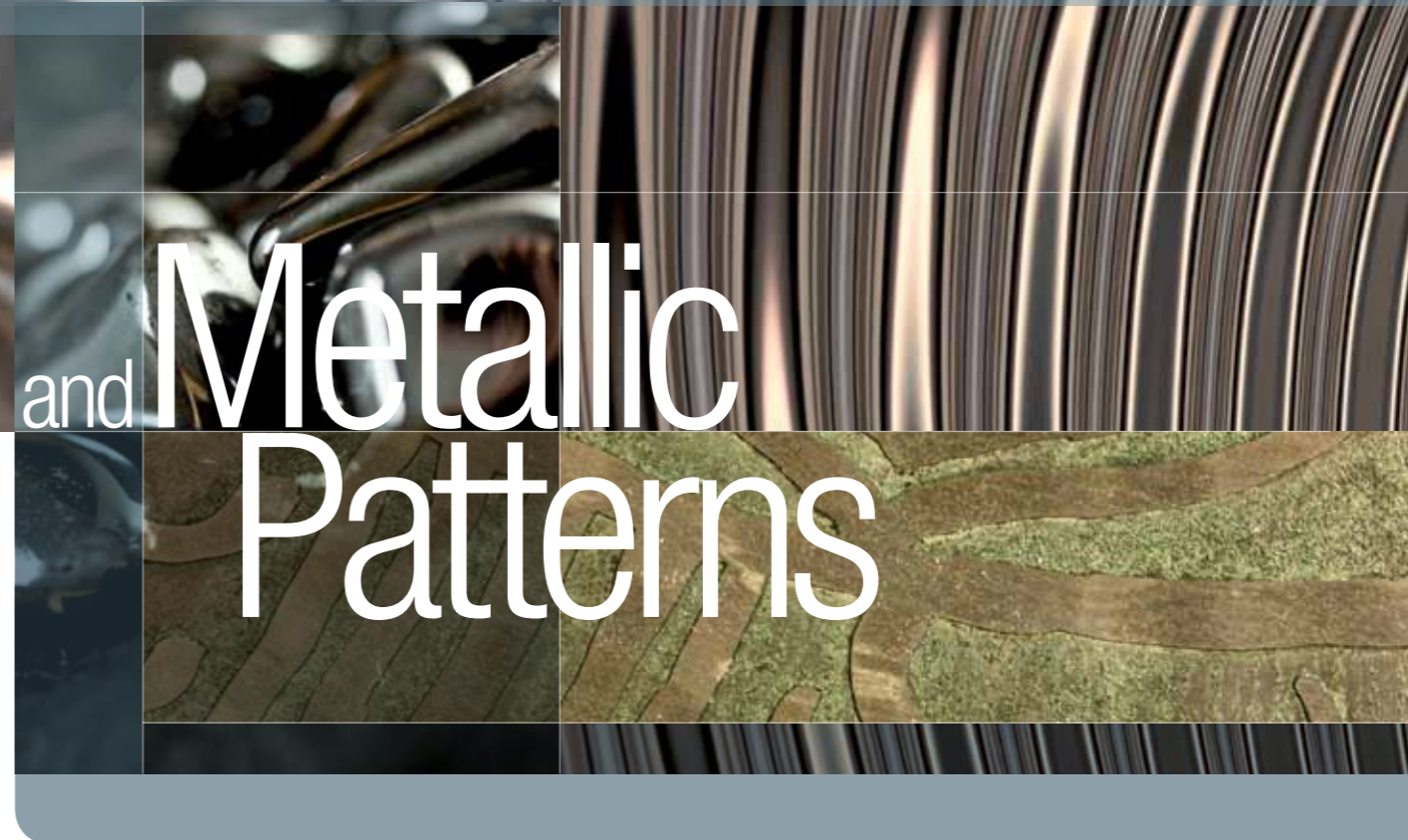


3M

- * Can be used outdoor. Can be applied on PVC coated substrates.
- ☀ Can be used outdoor. Can not be applied on PVC coated substrates.
- ☒ Not meant for 3D applications. Do not use on compound curved surfaces.
- ☒ Do not conduct butt joint applications. Apply with reveals or joint separations.

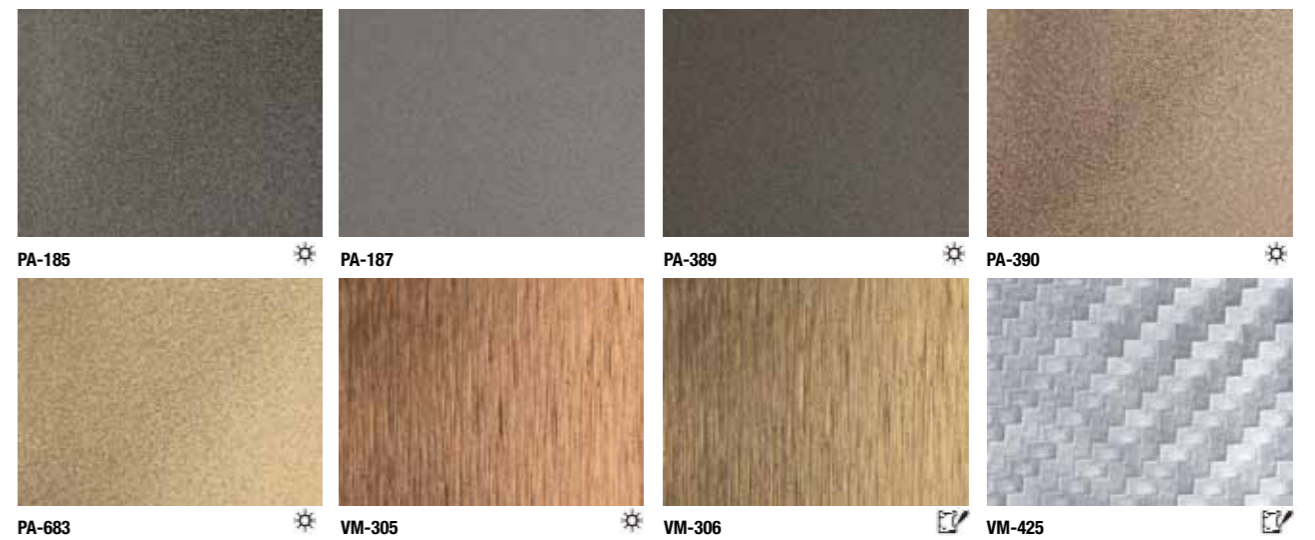


Carbon



and Metallic Patterns

Carbon + Metallic



- ✳ Can be used outdoor. Can be applied on PVC coated substrates.
- ⚙ Can be used outdoor. Can not be applied on PVC coated substrates.
- ☑ Not meant for 3D applications. Do not use on compound curved surfaces.
- 🔪 Do not conduct butt joint applications. Apply with reveals or joint separations.

Abstract, Little Wave and Rust

Weave, Leather and Sand

Abstract + Little Wave + Rust



FA-1099



LW-1081



LW-1084



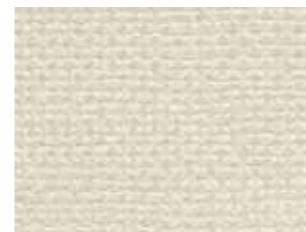
LW-1085



RT-1112



Weave + Leather + Sand



FE-813



LE-128



LE-517



LE-703



LE-783



LE-1106



LE-1108



LE-1109



LE-1110



PC-758

105 NEW PATTERNS

WOODS / ABSTRACT / NATURAL / METALLIC / SINGLE COLOUR



CA_1170



FA_1149



FA_1150



FA_1151



FA_1152



FA_1153



FA_1154



FA_1155



FA_1156



FA_1157



FA_1158



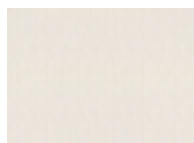
FA_1159



FA_1160



FA_1161



FA_1162



FA_1163



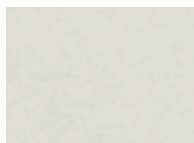
FA_1164



FA_1165



FA_1166



FA_1167



FA_1168



FA_1169



FA_1819



FA_1820



FA_1821



FA_1822



FW_1121H



FW_1122



FW_1123



FW_1124



FW_1125



FW_1126



FW_1127



FW_1128



FW_1129



FW_1130H



FW_1131



FW_1132



FW_1133



FW_1134



FW_1135



FW_1136H



FW_1137



FW_1138



FW_1139H



FW_1331



FW_1801



FW_1802



FW_1803



FW_1804



FW_1805



FW_1806



FW_1807



FW_1808



FW_1809



FW_1810



FW_1811



FW_1813



HG_1201



HG_1202



HG_1203



HG_1204



HG_1205



HG_1206



LE_1171



LE_1172



LE_1173



ME_1174



ME_1175



ME_1176



MW_1177



PC_1178

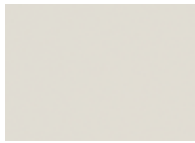


PC_1179





PC_1180



PC_1181



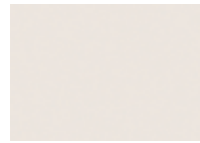
PG_1182



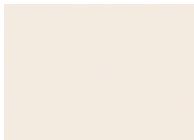
PS_1183MT



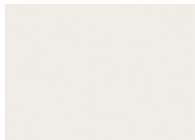
PS_1184



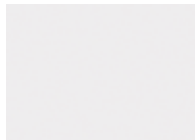
PS_1185



PS_1186



PS_1187



PS_1188



RS_1189



RS_1190



RS_1191



RS_1192



RS_1193



RS_1194



ST_1195



WG_1140



WG_1141



WG_1142



WG_1143



WG_1144



WG_1145H



WG_1146



WG_1147



WG_1148



WG_1196



WG_1812



WG_1814



WG_1815



WG_1816



WG_1817



WG_1818



- * Can be used outdoor. Can be applied on PVC coated substrates.
- * Can be used outdoor. Can not be applied on PVC coated substrates.
- ☒ Not meant for 3D applications. Do not use on compound curved surfaces.
- ☒ Do not conduct butt joint applications. Apply with reveals or joint separations.

Single Color

Single Color



- * Can be used outdoor. Can be applied on PVC coated substrates.
- * Can be used outdoor. Can not be applied on PVC coated substrates.
- ☒ Not meant for 3D applications. Do not use on compound curved surfaces.
- ☒ Do not conduct butt joint applications. Apply with reveals or joint separations.

Fine Wood



Fine Wood



- ✦ Can be used outdoor. Can be applied on PVC coated substrates.
- ✦ Can be used outdoor. Can not be applied on PVC coated substrates.
- ☑ Not meant for 3D applications. Do not use on compound curved surfaces.
- ☒ Do not conduct butt joint applications. Apply with reveals or joint separations.

Wood Grain

Wood Grain

