



TankConnection

Affiliate Group

Dry Bulk Storage Systems Project Capabilities

- Integrated Storage Systems
- Bolted RTP Storage Tanks
- Field-Weld Silos
- Shop-Weld Tanks
- Hybrid Tank Designs
- SIT (system installed tanks)
- Columns & Stacks
- ASME Pressure Vessels
- Field Construction Services
- Engineered Storage Solutions



Tank Connection

Get Connected...with the Industry Leader in Storage!

If your project involves a single silo or an integrated storage system, no one offers more services and creative solutions than Tank Connection. We are the domestic leader in storage tanks, silos and integrated storage systems. Our specialties include shop and field-welded and bolted storage tanks/silos, auxiliary fill and discharge equipment, truck and rail load/unload applications and mass flow discharge design.

Tank Connection will recommend the best solution for your application. Project service begins with your first contact. The most experienced professionals in the marketplace will answer your storage questions and follow with specification development tailored for your requirements. From the quote stage through installation, Tank Connection provides streamlined processing and *Golden Rule* customer service.

Our in-house Engineering Team includes experienced project managers and CAD layout operators that interface dry bulk storage applications everyday. We recognize the importance of maintaining project schedules. Tank Connection has developed procedures to expedite project changes virtually overnight. Storage tank designs and supporting calculations can be stamped with a Professional Engineer's stamp from any state.

Custom Storage

Service

Engineering

Shop-welded/hopper bottom tanks up to 14,000 cubic feet

Field-welded/hopper bottom silos up to 200,000 cubic feet

Bolted industrial process tanks up to 110,000 cubic feet

Hybrid Silos up to 150,000 cubic feet

Telephone Consultation

Specification Development

Product Testing

Customized Design

Material Supply

Field Installation Service

Professional Engineering Services

API 650, API 620, ASCE, AWWA D100, AWWA D103, AISC, IBC, NFPA, FM, RTP Smoothwall

Tank Calculations & PE Stamps

Detailed Design & CAD Layout

Dedicated Project Managers



Description
PRB coal storage, functional mass flow discharge system (42' diam. x 120' ht.)

Features
TC integrated system

Services
Total turnkey design, supply & field install

Description
Fly ash storage/dual rail loadout system (47' diam. x 130' ht.)

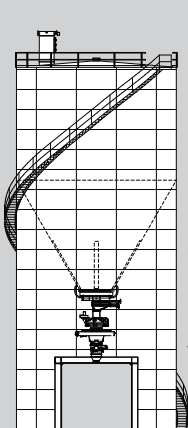
Features
Bolted RTP tank construction, rail loadout, concrete floor for fluidization system, mezzanine floor for pugmills, structural support steel

Services
Total turnkey - specification, design, fabricate & install

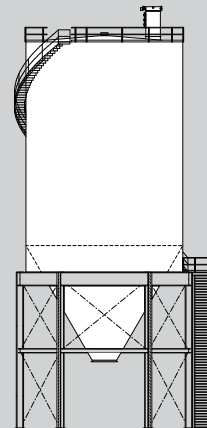
Description
Aggregate Storage (18', 21', 26' diam. bolted RTP silos)

Features
Functional mass flow discharge, lug support design on structural steel

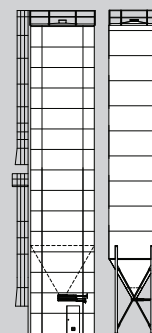
Services
Total turnkey design, fabricate & install



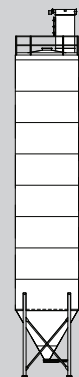
Cement Storage
Fly Ash Storage
Fluidized
Dustless Unloading
Truck & Rail Loadout



Mineral Storage
Field-Welded
6 & 8 Legs



Plastics
Gravity Blender
Skirted Bolted
Shop-Welded
Design Gravity Feed



Weighing on
Load Cells

Tank Connection is your most knowledgeable resource for the storage of minerals, aggregates, plastic resins, chemicals, food products, wood waste and other dry bulk materials. Customers and consultants recognize the Tank Connection team's expertise in providing innovative solutions. We understand the importance of the interface between the storage silo and its auxiliary equipment.

Integration

Functional Mass Flow-FIFO

Pneumatic Fill/Discharge Systems

Mechanical Fill/Discharge Equipment

Dustless Unloading

Weighing/Load Cell Applications

Active/Passive Discharge Systems

Tank Inventory Management



Description
Frac sand receiving/loadout terminal (26' diam. x 80' ht.)

Features
Premier RTP tank construction, complete integrated mechanical storage system

Services
Specification, design, fabrication, installation & start-up

Our in-house services enable us to perform rapid turnarounds on mass flow, funnel flow and expanded flow custom silos with appropriate discharge equipment. We can provide field installation of storage tanks, and systems, including foundations, auxiliary equipment, electrical and controls. Tank Connection also routinely conducts silo inspections, retrofits and repairs of existing tanks.

Field Installation



Description
Welded, bolted RTP tank construction & structural steel

Features
Functional mass flow & NFPA explosion requirements

Services
Turnkey design, fabrication & install

In storage silos and integrated storage systems, attention to detail is an essential part of our approach. We're willing to respond to non-standard requests because we have the capabilities to consider special applications and produce workable solutions. Every storage tank/system we provide is backed by a Tank Connection *Reliable Performance Guarantee*.

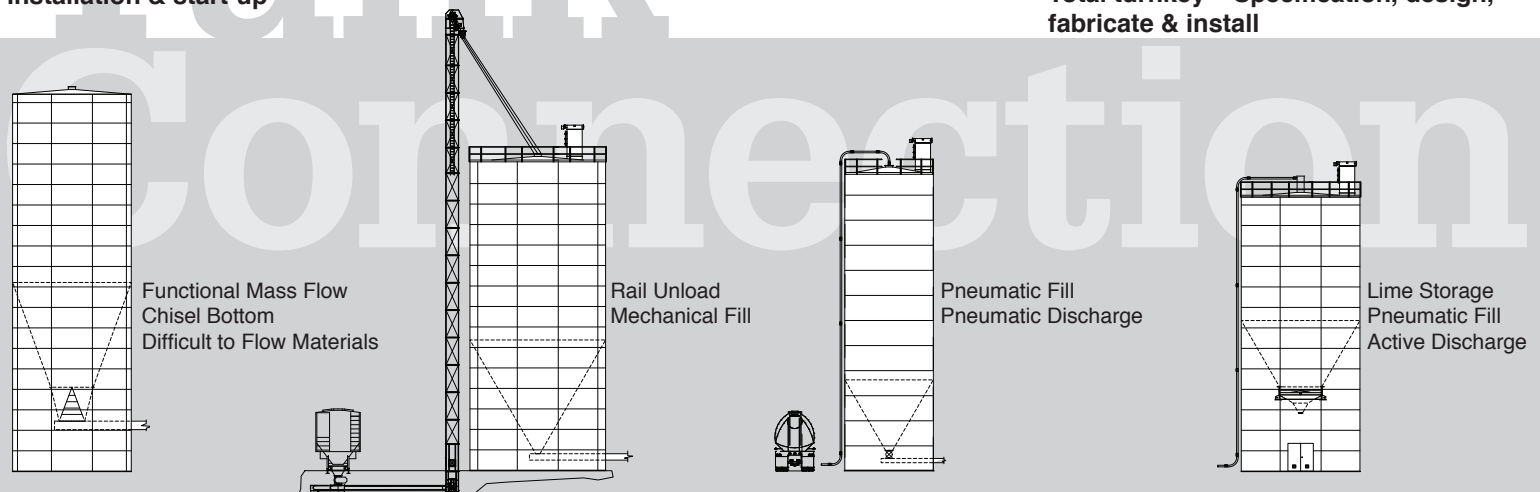
Commitment



Description
Power Utility: Limestone, fly ash & recycle ash storage systems (29', 38', 47' diam. tanks)

Features
Bolted RTP, field-weld & hybrid tank construction, mass flow hopper designs, structural steel

Services
Total turnkey – Specification, design, fabricate & install



The Leading Tank Manufacturing Facility for Bolted RTP Fabrication

With multiple facilities and over 300,000 sq. ft. of manufacturing space dedicated to storage tank fabrication, TC Affiliates has created the ultimate SINGLE SOURCE approach to dry bulk storage systems... and they back it with the largest support team of recognized industry experts in storage containment applications.



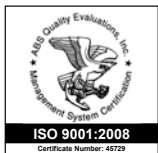
Tank Connection's 85,000 sq. ft., state-of-the-art manufacturing facility was brought on line in early 2009. The facility commands the top position in bolted tank manufacturing worldwide!

At Tank Connection, we build excellence in Storage Systems!

- Best Storage Tank Designs... Bolted RTP, Field-Weld, Shop-Weld & Hybrid Tank Construction
- Tank Connection's Precision RTP (rolled, tapered panel) Construction is the #1 Bolted Tank Design Selected Worldwide
- Best Powder Coat System - Fusion 5000 FBE™ & Fusion SDP™
- Top Rated Bolted Tank Erection Process... Worldwide
- #1 in Storage Applications... Over 2100 Years of Combined Storage Tank Experience!

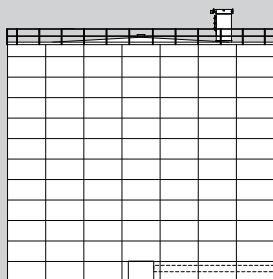


You can't procure or specify "BETTER THAN THE BEST"!

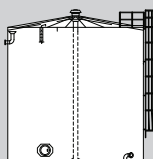


3609 North 16th • Parsons, KS 67357
Ph: 620.423.3010 • Fax: 620.423.3999

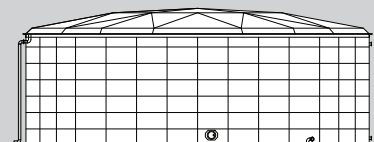
Website: www.tankconnection.com • Inquiry: sales@tankconnection.com



XL Storage
Flat Bottom
Bolted/Field-Welded
Mechanical Unloader or
Fluidized Discharge



Fire
Protection



Process
Liquids
Bolted