

*an ISO 9001
Company*

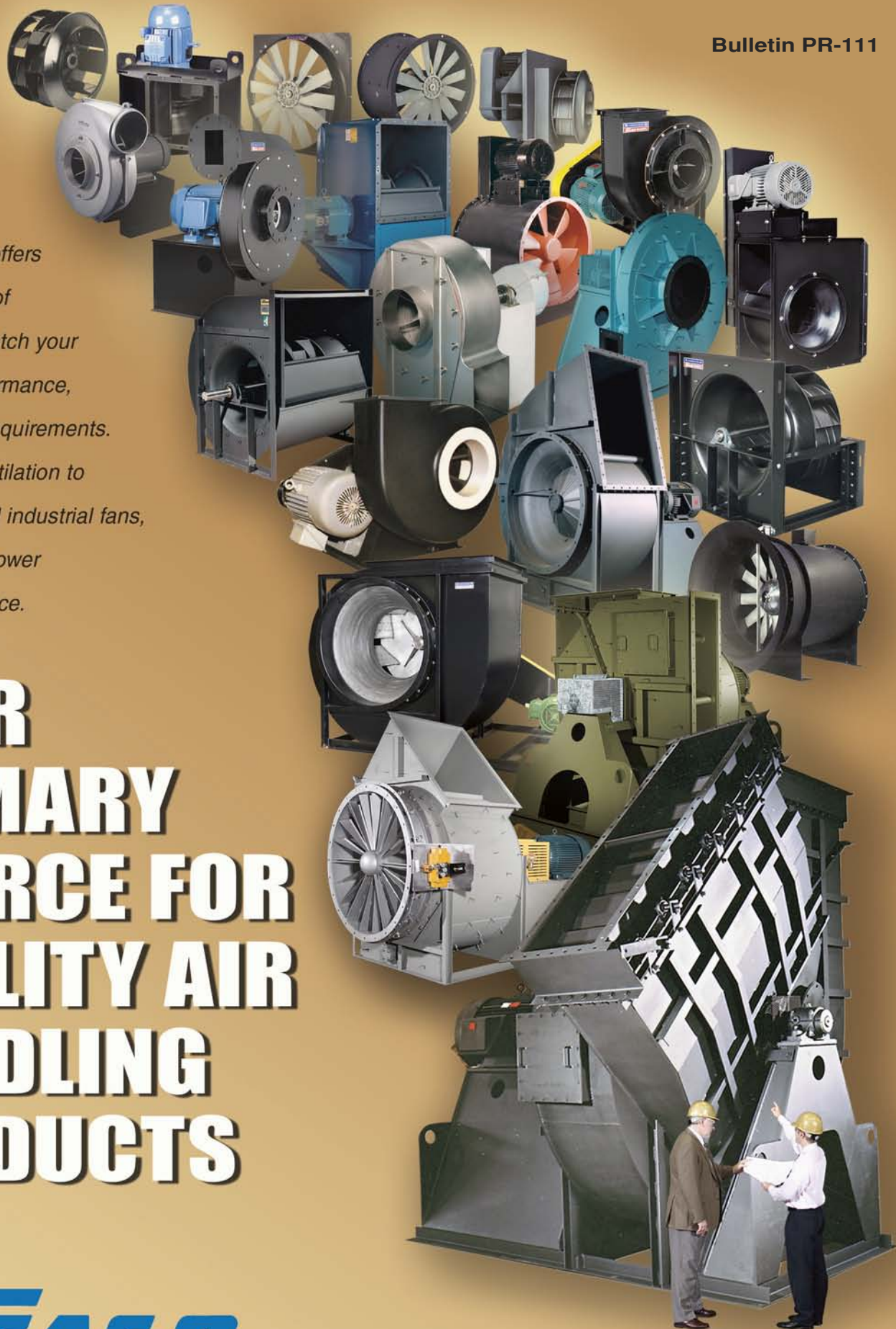
Bulletin PR-111

*Chicago Blower offers
a wide selection of
quality fans to match your
application, performance,
and installation requirements.
From general ventilation to
highly engineered industrial fans,
make Chicago Blower
your primary source.*

YOUR PRIMARY SOURCE FOR QUALITY AIR HANDLING PRODUCTS

The logo for Chicago Blower Corporation, featuring the word "CHICAGO" in a bold, blue, italicized sans-serif font. The letters are contained within a blue, stylized graphic element that resembles a horizontal bar with a slight curve and a shadow effect.

CHICAGO BLOWER CORPORATION • GLENDALE HEIGHTS, IL • USA



Airfoil Fans



SINGLE WIDTH

Known for high efficiency, low sound levels, and low horsepower, the Design 51 fan is used extensively in industrial supply and exhaust systems.

Sizes: 135 to 807
 Volumes to 240,000 CFM
 Pressures to 22" wg

[Request Bulletin DFOS](#)



DOUBLE WIDTH

Designed for greater volumes, the double width Design 51 is ideal for variable air volume systems and available with Chicago's exclusive Inlet Volume Control.

Sizes: 135 to 807
 Volumes to 425,000 CFM
 Pressures to 22" wg

[Request Bulletin DFO](#)



SQUARE SQA FANS

Versatile square fan housings are flanged on all sides for mounting in any of four discharge positions. Adjustable motor base mounts to all sides. Temperatures to 650°F.

Sizes: 8-3/4" to 44-1/2"
 Volumes to 70,000 CFM
 Pressures to 18" wg

[Request Bulletin SQA](#)



DIRECT DRIVE FANS

Compact direct connected fans are ideal for packaged supply, exhaust, combustion air applications. Includes options for partial width construction. Temperatures to 200°F.

Sizes: 8-3/4" to 30"
 Volumes to 27,386 CFM
 Pressures to 22" wg

[Request Bulletin SQAD](#)

IN STOCK

Many Chicago Blower fans are identified as Stock Fans available for quick delivery.

Most fans are offered with alternate wheel types and construction plus performance and convenience options.

Refer to Chicago's fan.net for performance, fan curves and sound data.

For software and assistance, contact your local Chicago Blower sales engineer.



Backward Inclined

Flat Bladed Wheels for Corrosive Air, Industrial Process Exhaust



SQB INDUSTRIAL FANS

Fans combine the "B" wheel with the capability of exhausting dirty industrial process air, and Chicago's versatile square housing. Temperatures to 650°F.

Sizes: 12-1/4" to 44-1/2"
 Volumes to 70,000 CFM
 Pressures to 17" wg

[Request Bulletin SQB](#)



BI INDUSTRIAL FANS

Heavy blades resist harsh corrosives and provide reliable operation in contaminated airstreams such as emission control systems. Temperatures to 800°F.

Sizes: 22-1/4 to 73
 Volumes to 125,000 CFM
 Pressures to 30" wg

[Request Bulletin BCF](#)



PBI PACKAGED FANS

Designed initially for dust collection applications, the Design 64 provides a choice of 12 fan sizes and comes with a 3-year warranty (an industry first). Temperatures to 200°F.

Sizes: 122 to 365
 Volumes to 46,100 CFM
 Pressures to 23" wg

[Request Bulletin PBI](#)

Efficient Choice for Clean Air, Fumes, Light Dust



HIGH VOLUME FANS

Design 10A fans are for high volume clean air and most light industrial applications. Single or double width, construction classes I-III. Temperatures to 800°F.

Sizes: 49 to 80-3/4
Volumes to 284,000 CFM
Pressures to 13" wg

[Request Bulletin ACF](#)



D/51 PLENUM FANS

Unhoused fans for easy installation directly into a plenum. Ideal for retro applications to expand system performance within the same space. Temperatures to 140°F.

Sizes: 135 to 807
Volumes to 230,000 CFM
Pressures to 17" wg

[Request Bulletin DFOP](#)



5120 PLENUM FANS

Design 5120 fans deliver increased volume at slower speeds and reduced sound levels. For new or retrofit HVAC systems, supply air, return air, exhaust applications. Temperatures to 140°F.

Sizes: 135 to 807
Volumes to 190,000 CFM
Pressures to 18" wg

[Request Bulletin 5120](#)



IN STOCK

PLUG FANS

Wheel is installed directly inside ovens and dryers with outside drive panel. Ideal for high temperature installation with insulated walls. Temperatures to 800°F.

Sizes: 12-1/4 to 44-1/2
Volumes to 55,000 CFM
Pressures 14" wg

[Request Bulletin SQPF](#)

Radial Bladed

Pre-Engineered Fans for Dirty Airstreams, Material Handling



IN STOCK

ICF INDUSTRIAL FANS

Industrial Centrifugal Fans with flat bladed wheel resist material buildup while maintaining balance. Heavy-duty shaft and bearings. Temperatures to 800°F.

Sizes: 7 to 41
Volumes to 120,000 CFM
Pressures to 40" wg

[Request Bulletin ICF](#)



IN STOCK

SQI INDUSTRIAL FANS

Heavy Duty "LS" wheel exhausts harsh corrosive airstreams. Compact industrial fan with gusset mounted bearings to provide a compact arrangement. Temperatures to 650°F.

Sizes: 5 to 17
Volumes to 17,000 CFM
Pressures to 19" wg

[Request Bulletin SQI](#)

Pressure Blowers

For Combustion Air, Process Applications, Pneumatic Conveying



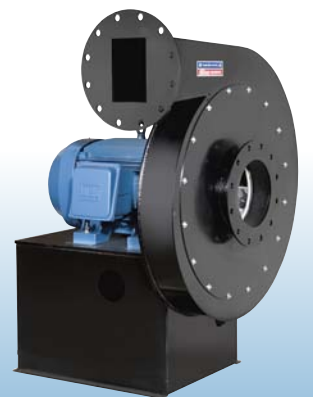
IN STOCK

CAST ALUMINUM

Design 38 blowers for fume/dust control, forced air drying and cooling. Match multiple wheels/inlets to eight housing sizes to meet required performance. Temperatures to 200°F.

Sizes: 800 to 1829
Volumes to 5000 CFM
Pressures to 20" wg

[Request Bulletin CAPB](#)



SINGLE STAGE

Design 53 blowers are suited for pneumatic conveying, combustion, and various other high pressure applications. Available in aluminum, and steel wheel styles up to 650°F.

Sizes: A to R
Volumes: 250 to 18,000 CFM
Pressures to 91" wg

[Request Bulletin CPB](#)

AXIAL FANS

For Ventilation, HVAC, Industrial Applications

CONTROLLABLE PITCH for Variable Air Volume Systems

Sensors compensate for changes in temperature, humidity, air flow, gas concentration or air quality by altering the blade pitch to increase or decrease air volume or pressure. Fan is ideal for VAV systems and for industrial applications requiring a constant environment regardless of air demand.

Sizes: 1650 to 8075
Volumes to 260,000 CFM
Pressures to 15" wg

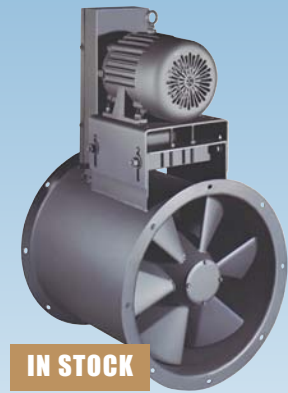
[Request Bulletin VAV](#)

ADJUSTABLE PITCH for System Balancing, Seasonal Changes

Adjustable pitch fans are recommended for installations where air demands may change but continuous automatic control is not needed. Blade pitch is set externally at the hub to alter air volume or pressure. Aluminum alloy airfoil blades and hub assure reliable performance. Direct drive and belt drive.

Sizes: 1650 to 8075
Volumes to 260,000 CFM
Pressures to 20" wg

[Request Bulletin VAV](#)



IN STOCK

FIXED PITCH

Compact Design 34 fans are designed for general industrial, non-VAV applications. Welded steel wheels, heavy gauge housings. Drive adjustment varies volume/pressure.

Sizes: 15" to 54-1/4"
Volumes to 108,000 CFM
Pressures to 5" wg

[Request Bulletin VA](#)

PANEL / TUBEAXIAL FANS for General, Industrial Ventilation

Direct drive adjustable pitch airfoil blades are precision molded from glass-reinforced resins. To achieve maximum performance and efficiencies to 70%. Propellers are furnished with three to twelve blades pre-set at the prescribed pitch, from 4° to 28°, and computer matched to available motors.

Panel Fans

Sizes: 14 to 48
Volumes to 64,000 CFM
Pressures to 2" wg

[Request Bulletin DCP](#)

Tube Axial

Sizes: 16 to 48
Volumes to 65,000 CFM
Pressures to 3" wg

[Request Bulletin DCT](#)

Adjustable Pitch Wheels

Blades adjustable to any pitch, providing the fine tuning to meet precise OEM requirements.

[Request Bulletin APW](#)



IN STOCK

IN STOCK



DD PLUG FANS

When Direct Drive plug fans are coupled with variable frequency drives, performance is not limited to synchronous motor speeds. Temperatures to 180°F.

Sizes: 12-1/4" to 30"
Volumes to 25,900 CFM
Pressures to 12" wg

[Request Bulletin SPFD](#)

Components

For OEM Requirements



SINGLE/DOUBLE WIDTH

Wheels, housings, inlet cones and inlet vane controls are available for packaged equipment. Select from airfoil or backward inclined blades.

Sizes: 100 to 490
Volumes to 158,000 CFM
Pressures to 20" wg

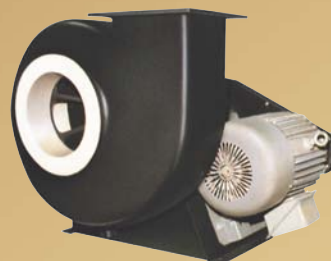
[Single Width Bulletin SAFK](#)
[Double Width Bulletin DAFK](#)

FRP FANS

For Corrosive Fumes, Gases, Adverse Environments

CENTRIFUGAL

Impeller designs to meet duty requirements. Inlet sizes to fit all common duct diameters. Temperatures to 200°F.



Backward Inclined

Sizes: 14" to 66"
Volumes to 120,000 CFM
Pressures to 16" wg

Radial Bladed

Sizes: 12" to 70"
Volumes to 110,000 CFM
Pressures to 33" wg

Radial Tip

Sizes: 9" to 66"
Volumes to 150,000 CFM
Pressures to 13" wg

[Request Bulletin FRP](#)

AXIAL

Direct Drive

Sizes: 10" to 18"
Volumes to 4700 CFM
Pressures to 1-1/2" wg

Belt Drive

Sizes: 18" to 60"
Volumes to 68,000 CFM
Pressures to 3" wg



Pre-Engineered Fans

PACKAGED FORCED DRAFT

Direct drive Arrangement 4 PFD packaged fans with reinforced airfoil wheels are designed for higher pressure supply air applications, such as packaged boilers.

Steep, stable pressure curve allows near constant air delivery. Three wheel designs for all standard motor speeds offer a broad performance range.

Sizes: 2000 to 4412
Volumes to 76,000 CFM
Pressures to 51" wg

[Request Bulletin PFD](#)



INDUSTRIAL AIRFOIL FANS

High efficiency airfoil wheel combined with belt drive flexibility ideal for combustion air, product cooling, high pressure drying and supply air, liquid agitation applications. Optional single surface backward curved wheel for light dust loads.

Fan features heavy duty roller bearings and shaft, rugged base mount. Available in Arrangements 1 and 9 belt drive; Arrangement 8 direct drive.

Sizes: 2700 to 6600
Volumes to 170,000 CFM
Pressures to 40" wg

[Request Bulletin IAF](#)



INDUSTRIAL RADIAL TIP

With rugged radial tipped wheels, the IRT is ideal for induced draft, industrial dust collection, and most harsh airstreams.

The fan is available in belt drive Arrangement 1 and 9 configurations plus direct drive Arrangement 8.

Sizes: 3000 to 6000
Volumes to 160,000 CFM
Pressures to 33" wg

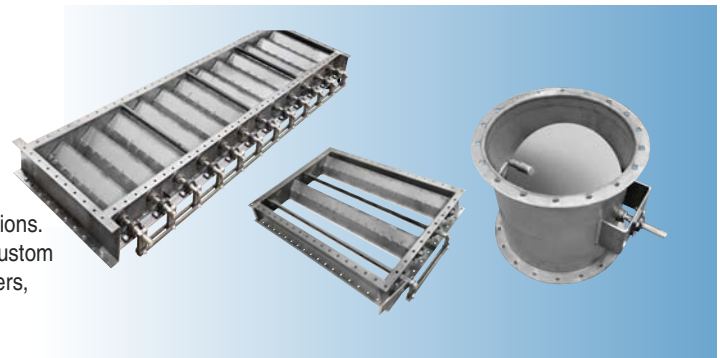
[Request Bulletin IRT](#)



INDUSTRIAL DAMPERS

Chicago manufactures stack and fan dampers for most applications. Included are pre-engineered Inlet Volume Controls (IVC), plus custom Outlet Dampers, Butterfly Dampers and Inlet Box Louvre Dampers, both the Pre-Spin and Opposed Blade types.

[Request Bulletin ID 100](#)



Custom Fans

MECHANICAL DRAFT FANS

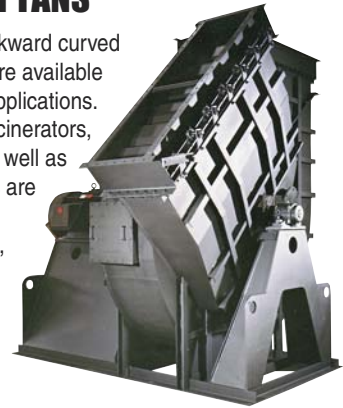
A wide selection of airfoil, backward curved and radial tip wheel designs are available for forced and induced draft applications.

Typical installations include incinerators, baghouses, kilns, furnaces as well as other custom processes. Fans are custom built in most arrangements, fully factory completed, and field erected fans.

Wheels to 108"
Volumes to 1,000,000 CFM
Pressures to 70" wg

[Request Bulletin AF/BC for Airfoil](#)

[Request Bulletin RT for Radial Tip](#)



PRESSURE AIR FANS

Heavy radial wheels are recommended for pollution control applications, such as continuous duty of primary air on burners, pulverizers, fluidizers and scrubbers. Options include abrasion and corrosion resistant construction materials. Variable widths and diameters provide exact performance with direct drive convenience.

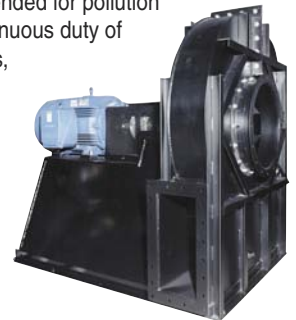
Wheels to 100"
Volumes to 440,000 CFM
Pressures to 108" wg

API FANS

All custom fans are available with API 673 and 560 construction features to meet the stringent demands of the petroleum industry. Although fans are built for a variety of refinery applications, each one is individually engineered using one of 15 distinct designs to fulfill performance specifications and the unique demands of the installation.

[Request Bulletin PA](#)

[Request Bulletin API](#)



Setting the Standard For Quality



*Innovative Engineering
Through Application Analysis*

Building the ideal fan for each application requires solid engineering experience and a sound understanding of the application. Whatever the challenge, Chicago's team is ready to assist.



*Global Service
a Click Away*

Chicago Blower representatives positioned strategically around the globe welcome the opportunity to discuss and evaluate your application. Put our fan building expertise to work for you. You'll enjoy working with Chicago Blower, an ISO 9001 Company.



*Quality Fans
Built With
Skill and Pride*

The art of fan building requires skilled craftsmen who take pride in their workmanship. Chicago Blower's on-going quality and testing programs assure reliable fans that exceed our customers' expectations.

**Sales Offices
Throughout
North America**

*Chicago Blower Fans
are also manufactured
worldwide:*

Argentina, Australia, Brazil,
Chile, China, Colombia,
Denmark, Germany, Greece,
Holland, Hong Kong, India,
Indonesia, Israel, Italy,
Japan, Korea, Malaysia,
New Zealand, Norway,
Philippines, Portugal,
Saudi Arabia, Singapore,
South Africa, Spain, Sweden,
Thailand, Taiwan, Turkey,
Venezuela.



1675 Glen Ellyn Road, Glendale Heights, Illinois 60139

Phone: 630-858-2600 • Fax: 630-858-7172

www.chicagoblower.com • e-mail: fans@chicagoblower.com