



Magnetic Grate Tubes

TRAMP MTL 2A (5/99)

ROUND GT - SQUARE GT

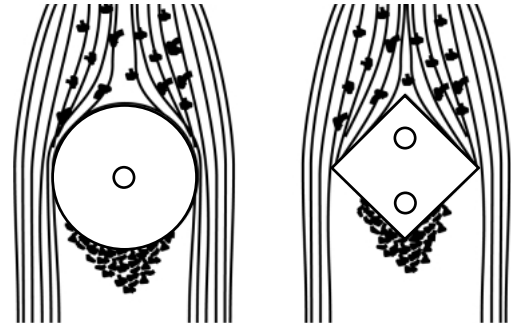
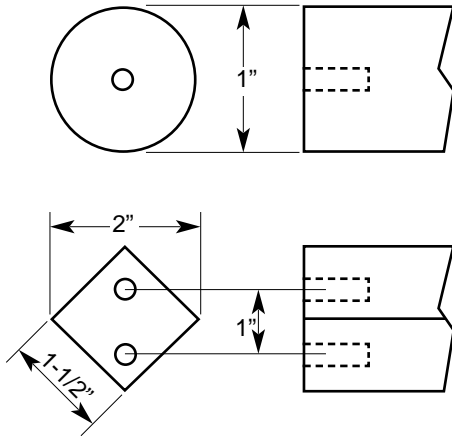
• CERAMIC

• RARE EARTH

• ALNICO

TUBE CONSTRUCTION:

IMI magnetic tubes feature rolled stainless steel construction with solid stainless steel end plugs that have 1/4-20 tapped mounting holes. This ensures the rugged performance and safe operation of IMI tubes.



1" Diameter Round Grate Tubes

Part Number	Tube Length	Tube Weight
GT0400	4"	0.6 Lbs.
GT0600	6"	0.9 Lbs.
GT0800	8"	1.2 Lbs.
GT1000	10"	1.5 Lbs.
GT1200	12"	1.8 Lbs.
GT1400	14"	2.1 Lbs.
GT1600	16"	2.4 Lbs.
GT1800	18"	2.7 Lbs.
GT2000	20"	3.0 Lbs.
GT2200	22"	3.3 Lbs.
GT2400	24"	3.6 Lbs.
GT2600	26"	3.9 Lbs.
GT2800	28"	4.2 Lbs.
GT3000	30"	4.5 Lbs.
GT3200	32"	4.8 Lbs.
GT3400	34"	5.1 Lbs.
GT3600	36"	5.4 Lbs.

1-1/2" Square Grate Tubes

Part Number	Tube Length	Tube Weight
ST0400	4"	1.6 Lbs.
ST0600	6"	2.5 Lbs.
ST0800	8"	3.3 Lbs.
ST1000	10"	4.0 Lbs.
ST1200	12"	4.9 Lbs.
ST1400	14"	5.7 Lbs.
ST1600	16"	6.5 Lbs.
ST1800	18"	7.3 Lbs.
ST2000	20"	8.1 Lbs.
ST2200	22"	8.9 Lbs.
ST2400	24"	9.8 Lbs.
ST2600	26"	10.6 Lbs.
ST2800	28"	11.4 Lbs.
ST3000	30"	12.2 Lbs.
ST3200	32"	13.0 Lbs.
ST3400	34"	13.8 Lbs.
ST3600	36"	14.6 Lbs.
ST3800	38"	15.4 Lbs.
ST4000	40"	16.3 Lbs.
ST4200	42"	17.0 Lbs.
ST4400	44"	17.9 Lbs.
ST4600	46"	18.7 Lbs.
ST4800	48"	19.5 Lbs.

*All dimensions are stated in inches

NOTES:

When ordering Grate Tubes add "C" (for Ceramic), "R" (for Rare Earth), or "A" (for Alnico) to the end of the part number to indicate the desired magnet material. Example: GT0400R is a Rare Earth Round Grate Tube.

©1999 Industrial Magnetics, Inc.

IMI Is Represented By Air Process Systems & Conveyors Co., Inc.

774 Burr Oak Drive • Westmont, Illinois 60559 • Phone: 630.887.0770 800.822.0771

Fax: 630.887.0771 • Email: Sales@AirProcessSystems.com

Web: www.AirProcessSystems.com