



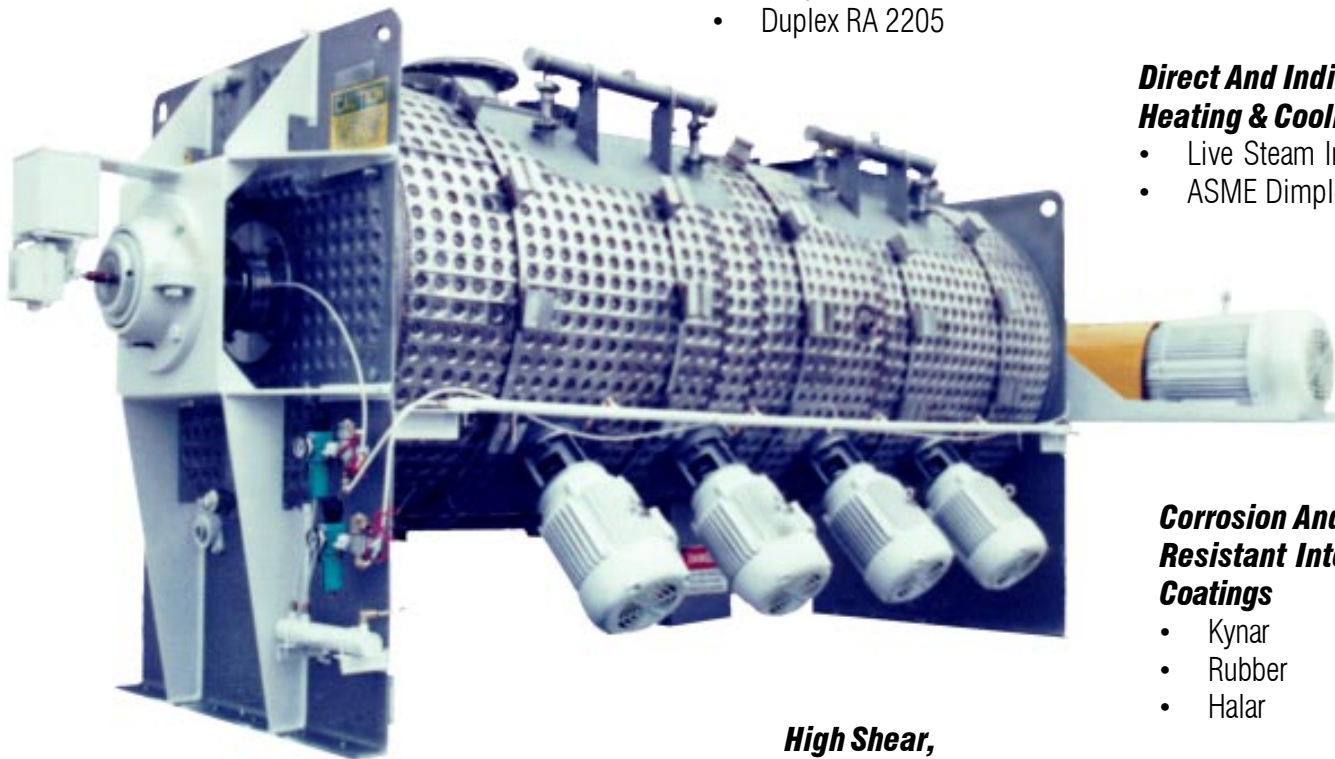
Plow Blenders Dryers & Reactors

High Speed Plow & Paddle Blenders

- Capacities From 2.5 ft³ To 1,200 ft³
- Batch Or Continuous Operation

Materials Of Construction

- Stainless Steel: 304, 304L, 316, 316L, 17-4
- Hastelloy C-240
- Alloy 20
- Duplex RA 2205



Direct And Indirect Heating & Cooling, via

- Live Steam Injection
- ASME Dimple Jackets

Corrosion And Erosion Resistant Internal Coatings

- Kynar
- Rubber
- Halar

High Shear, High Speed Choppers

Abrasion Resistant Construction

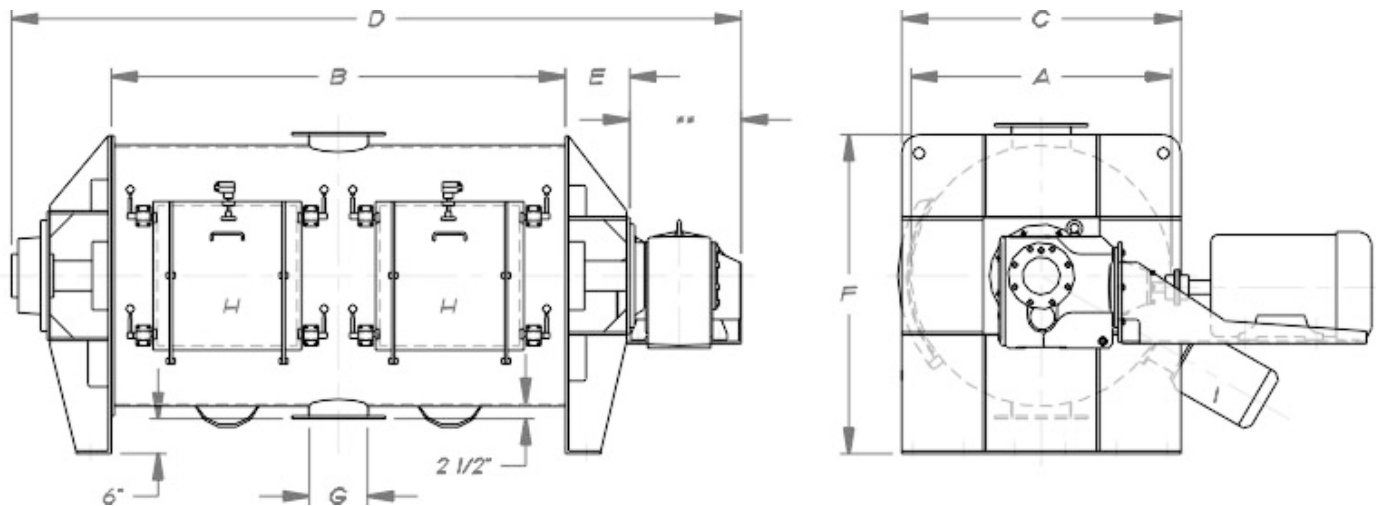
- AR 200 & AR 400
- Hardened 17-4 Stainless Steel
- Tungsten Carbide Wear Strips

Dryers & Reactors

- Full Vacuum
- Pressures To 700 PSI (48 bar)
- Temperatures To 700°F (370°C)



General Arrangement & Sizes



10/98 Printed in the U.S.A. Subject to changes

Model		CPB-6		CPB-12		CPB-18		CPB-30		CPB-45		CPB-60		CPB-90		CPB-135		CPB-175		CPB-350	
Tank Diameter (inches cm)	A	25	64	30	76	34	86	40	102	44	112	44	112	50	127	56	142	62	157	84	213
Tank Length (inches cm)	B	40	102	48	122	60	152	72	183	78	198	120	305	132	335	156	396	168	427	180	457
Working Capacity ¹ (ft ³ liters)		6	170	12	340	18	500	30	850	45	1,275	60	1,700	90	2,550	135	3,850	175	5,000	350	10,000
Holding Capacity (ft ³ liters)		10	300	20	600	30	850	50	1,400	70	2,000	100	3,000	150	4,200	220	6,000	290	8,000	570	16,000
HP ² (average range)		7.5-15		15-25		20-30		30-50		50-75		60-100		75-125		125-200		150-250		250-350	
Width (inches cm)	C	29	74	34	86	38	97	44	112	48	122	48	122	54	137	61	155	67	170	89	226
Overall Length excl. drive (inches cm)	D	75	191	84	213	97	246	113	287	121	307	163	414	178	452	187	475	199	505	211	536
	E	11	28	11	28	11	28	11	28	11	28	11	28	11	28	11	28	11	28	11	28
Height (inches cm)	F	45	114	52	132	56	142	64	163	70	178	70	178	79	201	67	170	73	185	95	241
Discharge Flange (dia. in inches cm)	G	6	15	6	15	8	20	10	25	12	30	12	30	12	30	12	30	12	30	12	30
Number of access doors	H	1		1		2		2		2		3		3		3		3		4	
Number of choppers	I	1		1		2		2		3		3		4		4		6		6	

Dimensions are approximate and vary with each application. ¹ Working capacity based on 60-70% of total capacity. ² Final HP determined by product/process requirements.

For More Information Contact:
Air Process Systems & Conveyors Co., Inc.
 774 Burr Oak Drive • Westmont, Illinois 60559
 Phone: 630.887.0770 • 800.822.0771 • Fax: 630.887.0771
 Website: www.AirProcessSystems.com • E-mail: Sales@AirProcessSystems.com



Member

**AMERICAN
 PROCESS
 SYSTEMS**
 Eirich Group