

INNOVATION IN AUTOMATION

IQC Filters

CUT SHEET

COMPONENTS



BULK



MINORS



LIQUIDS



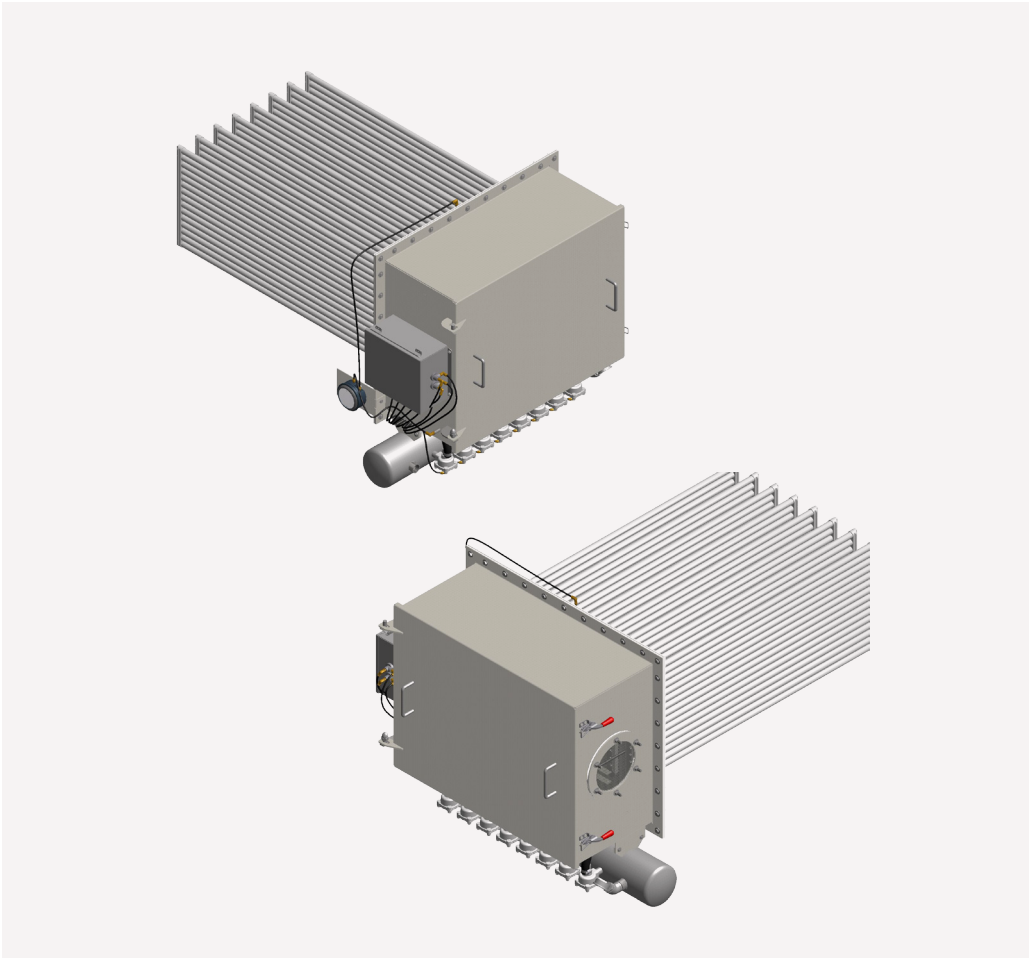
CONTROLS



SITE SERVICES



IQC Filters



INFORMATION

Shick's IQC (Insertable Quick Change) filter utilizes high-efficiency spun bond polyester filter elements with ePTFE membrane. The unit is ideal in areas with height restrictions and on top of use bins and silos to help keep your plant dust free. The unit's filter elements have a 99.9%+ efficiency rating. Its compact design makes it ideal for silos, receivers,

dust collectors and bin vents, a better alternative in comparison to traditional bag and cage filters. Change of filters occurs from the clean air plenum. This eliminates confined space permitting or entry procedures.

STANDARD FEATURES

EASILY ACCESSIBLE: Easy to access for use bin and silo top applications, thus reducing replacement labor and parts

HEIGHT REDUCTION: Maximum filter area in a limited amount of space by extending sidewalls of the bin on which it is mounted

QUICK CHANGE FILTER: Lock-in-place door makes filter elements easily accessible with no tools required to release the blow-down tube assemblies

CLEANABLE ELEMENTS: Easily cleaned, procedures upon request

FINISH: 304 S/S construction with 2B internal finish and glass bead blasted exterior; *Carbon steel available upon special request

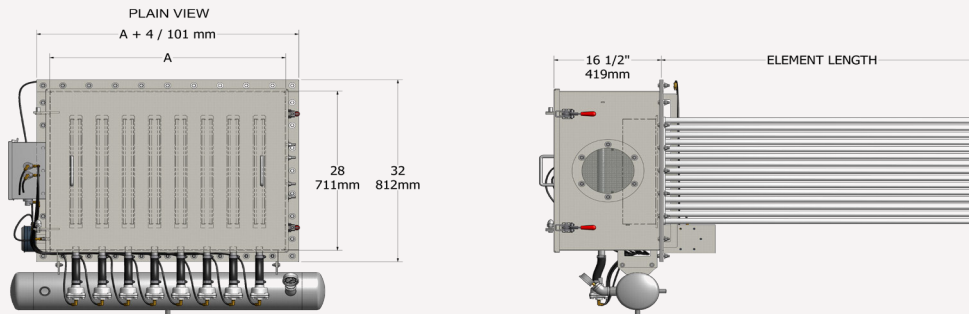
FILTER ELEMENTS: Spun bonded polyester with ePTFE membrane and a 99.9%+ efficiency rating

MODELS - IQC (HORIZONTAL STACKED DESIGN)

MODEL NO.	A DIMENSIONS (INCH/MM)	ELEMENT LENGTH (INCH/MM)	NO. OF ELEMENTS	FILTER AREA (SQ. FT.)	RECOMMENDED CFM RANGE	MAX CFM 10:1*	MINIMUM BIN DIAMETER (INCH/MM)
4-700	20 / 508	27.55/700	4	37.04	222/296	370	36/914
6-700	28 / 711	27.55/700	6	55.56	333/444	556	36/914
8-700	36 / 915	27.55/700	8	74.08	444/593	741	48/1219
4-1000	20 / 508	39.36/1000	4	52.96	318/424	530	48/1219
6-1000	28 / 711	39.36/1000	6	79.44	477/636	794	48/1219
8-1000	36 / 915	39.36/1000	8	105.92	636/847	1059	48/1219
12-1000	56 / 1,423	39.36/1000	12	158.88	953/1271	1589	60/1524
16-1000	72 / 1,829	39.36/1000	16	211.84	1271/1695	2118	84/2134
4-1250	20 / 508	49.2/1250	4	65.84	395/527	658	60/1524
6-1250	28 / 711	49.2/1250	6	98.76	593/790	988	60/1524
8-1250	36 / 915	49.2/1250	8	131.68	790/1053	1317	60/1524
12-1250	56 / 1,423	49.2/1250	12	197.52	1185/1580	1975	60/1524
16-1250	72 / 1,829	49.2/1250	16	263.36	1580/2107	2634	84/2134

* Special application approval range

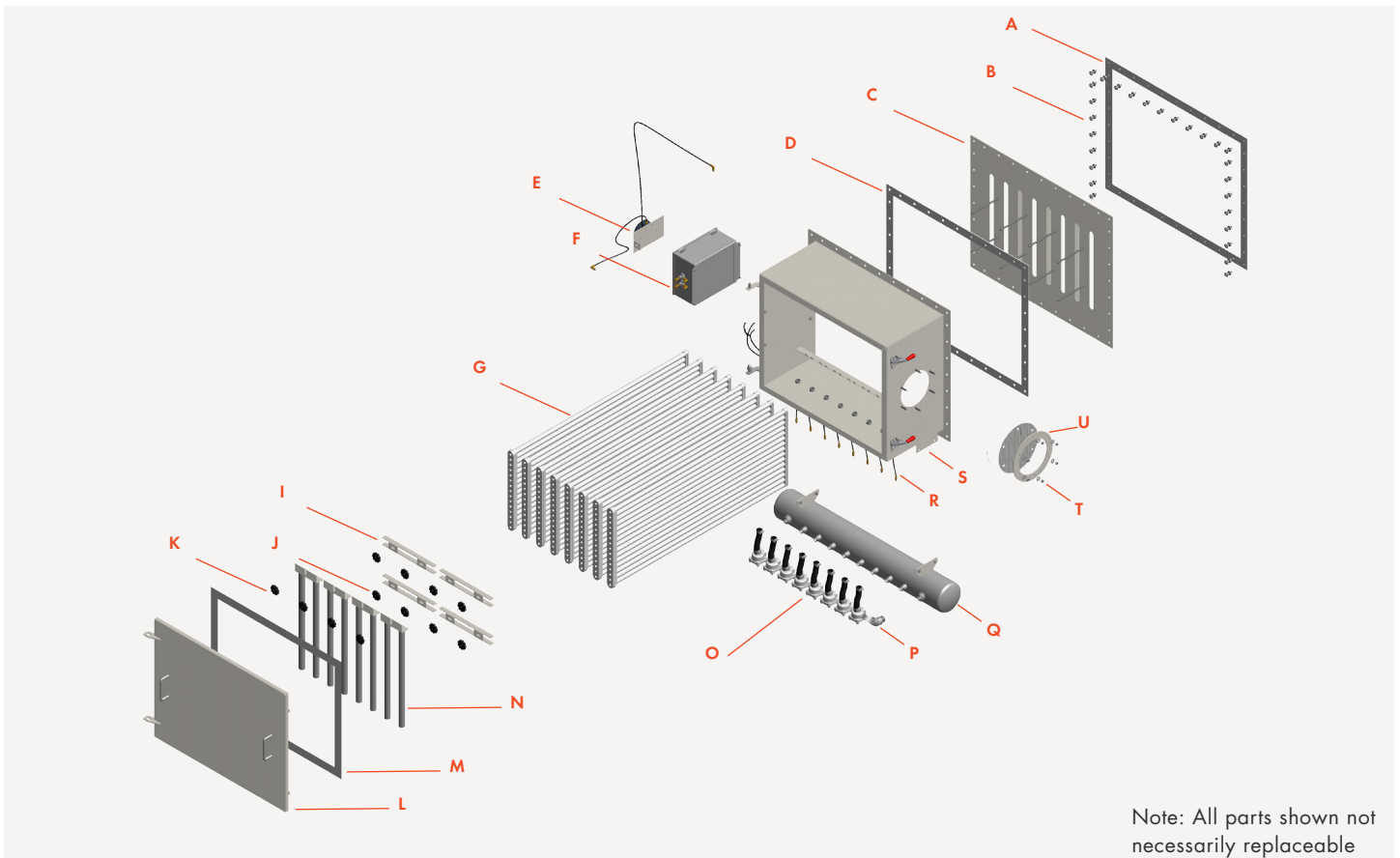
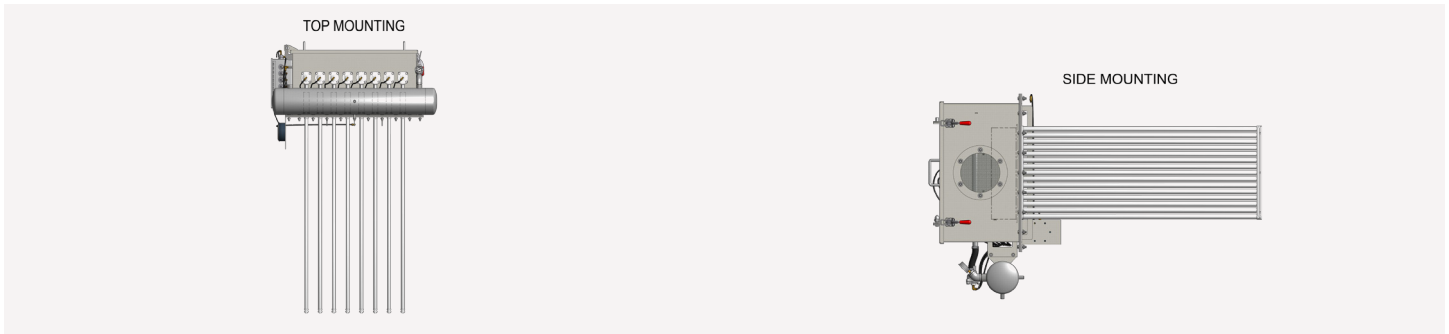
SCHEMATICS: IQC



MODELS - IQC (VERTICAL STACKED DESIGN)

MODEL NO.	B DIMENSIONS (INCH/MM)	ELEMENT LENGTH (INCH/MM)	NO. OF ELEMENTS	FILTER AREA (SQ. FT.)	RECOMMENDED CFM RANGE	MAX CFM 10:1*	MINIMUM BIN DIAMETER (INCH/MM)
12-1000	28/711	39.36/1000	12	158.88	953/1271	1589	48/1524
16-1000	36/915	39.36/1000	16	211.84	1271/1695	2118	48/2134
12-1250	28/711	49.2/1250	12	197.52	1185/1580	1975	60/1524
16-1250	36/915	49.2/1250	16	263.36	1580/2107	2634	60/1524





Note: All parts shown not necessarily replaceable

- | | | |
|-----------------------------|----------------------------|---|
| A: Tube sheet gasket | J: Venturi clamping knob | Q: Compressed air header assembly |
| B: Mounting hardware | K: Blow pipe clamping knob | R: Pulse valve air assembly |
| C: Tube sheet assembly | L: Filter access door | S: Clean air housing |
| D: Tube sheet gasket | M: Door gasket | T: Mounting hardware |
| E: Differential gauge kit | N: Blow pipe assembly | U: Retaining ring (Optional weather hood) |
| F: Timer/solenoid enclosure | O: Pulse valve assembly | V: Bird screen |
| G: Filter assembly | P: Pressure gauge kit | W: Exhaust port gasket |
| H: Venturi assembly | | |
| I: Venturi support bracket | | |