



PNEUMATIC CONVEYING SYSTEMS

BIN VENT / DUST COLLECTOR



OVERVIEW

Cyclonaire brand bin vents and dust collectors provide excellent filtration at destination points such as bins, hoppers and silos.

Installation is quick and easy with flanged outlet and dust discharge.

Automatic timers clean the filter media with pulse jet reverse flow air; dropping retained material back into the process.

Wide array of sizes available; custom sizes and features are also available.

Quality, custom built at competitive prices.

APPLICATIONS

- Air filtration and dust control at material destination

MATERIALS / CHARACTERISTICS

- Any dry bulk material conveyed pneumatically

CAPACITY

- Up to 549 ft² of filter area (standard)
- Pressure rated to 17" H₂O

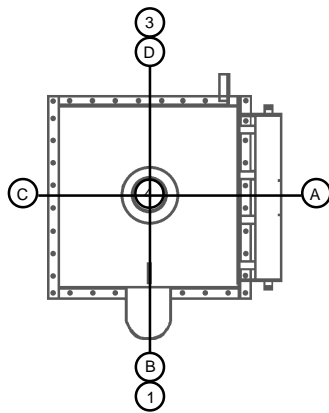
BENEFITS AND FEATURES

- Pulse jet cleaning to maintain media effectiveness
- Hinged door for easy bag access
- Differential pressure gauges for filter service indication
- Standard:
 - Carbon steel (10 gauge, welded)
 - NEMA 4 timer controls
 - 16 oz. polyester bags / bottom removable
 - Smooth wire cages and safety grid
 - Support legs and hopper (dust collector only)
- Specify:
 - Stainless steel
 - Timer controls in NEMA 4X, 7/9, 24V DC
 - Outlet size and style
 - Cartridge filter elements
 - Top removable design
 - Exhaust fan
 - High temperature design
 - Custom sizes and features

REQUIREMENTS

- 120 VAC, 50-60 Hz
- 90-100 PSIG; 3-10 SCFM air

BIN VENT / DUST COLLECTOR



ORIENTATION

LOCATIONS AVAILABLE					STD.
Access Door	A	B	C	D	A
Weather Hood	1	-	3	4	1
Level Sensor	A	B	C	D	B
Hand Hole	A	B	C	D	B

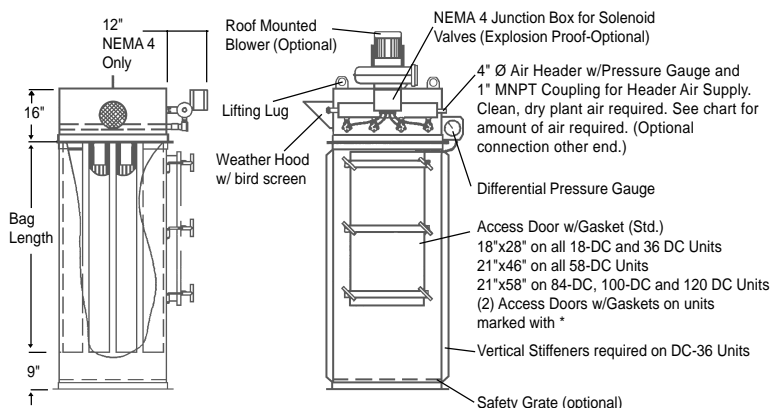
NOTE:

- 1, 3 & 4 are in Clean Air Plenum.
- A,B,C,D are in Dirty Air Plenum.
- 6" Material discharge is standard but not mandatory.
- Material inlet size is based on customer requirements.

DATA						DIMENSIONS			
MODEL NO.	ARRG.	FILTER AREA SQ. FT.	NO. OF BAGS	BAG LENGTH	AIR REQ'D SCFM@ PSIG	A	D	OUTLET VENT SIZE	WEIGHT
18-DC-9	II	17	9	18	4.0 @ 50-60	24	5	8	450
	III	17	9	18	4.0 @ 50-60	24	5	8	550
36-DC-9	II	39	9	36	4.2 @ 70-80	24	5	8	560
	III	39	9	36	4.2 @ 70-80	24	5	8	660
58-DC-9	II	65	9	58	4.5 @ 90-100	24	5	8	675
	III	65	9	58	4.5 @ 90-100	24	5	8	775
84-DC-9	II	95	9	84	5.0 @ 90-100	24	5	10	825
	III	95	9	84	5.0 @ 90-100	24	5	10	925
18-DC-16	II	30	16	18	5.2 @ 50-60	32	7	10	525
	III	30	16	18	5.2 @ 50-60	32	7	10	650
36-DC-16	II	69	16	36	5.5 @ 70-80	32	7	10	525
	III	69	16	36	5.5 @ 70-80	32	7	10	650
58-DC-16	II	115	16	58	5.8 @ 90-100	32	7	10	825
	III	115	16	58	5.8 @ 90-100	32	7	10	950
84-DC-16	II	170	16	84	6.2 @ 90-100	32	9	10	1000
	III	170	16	84	6.2 @ 90-100	32	9	10	1125
*18-DC-25	II	54	25	18	6.3 @ 50-60	40	9	10	500
	III	54	25	18	6.3 @ 50-60	40	9	10	675
*36-DC-25	II	108	25	36	6.5 @ 70-80	40	9	10	600
	III	108	25	36	6.5 @ 70 80	40	9	10	775
*58-DC-25	II	180	25	58	6.7 @ 90-100	40	9	12	1000
	III	180	25	58	6.7 @ 90-100	40	9	12	1175
*84-DC-25	II	265	25	84	7.0 @ 90-100	40	9	12	1225
	III	265	25	84	7.0 @ 90-100	40	9	12	1400
*100-DC-25	II	318	25	100	7.5 @ 90-100	40	9	12	1200
	III	318	25	100	7.5 @ 90-100	40	9	12	1375
*36-DC-36	II	156	36	36	7.5 @ 70-80	48	11	12	1450
	III	156	36	36	7.5 @ 70-80	48	11	12	1675
*58-DC-36	II	260	36	58	8.0 @ 90-100	48	11	12	1475
	III	260	36	58	8.0 @ 90-100	48	11	12	1700
*84-DC-36	II	382	36	84	8.5 @ 90-100	48	11	12	1700
	III	382	36	84	8.5 @ 90-100	48	11	12	1925
*100-DC-36	II	457	36	100	9.0 @ 90-100	48	11	12	1725
	III	457	36	100	9.0 @ 90-100	48	11	12	1950
*120-DC-36	II	549	36	120	10.5 @ 90-100	48	11	12	2025
	III	549	36	120	10.5 @ 90-100	48	11	12	2250

NOTE: Dimensional data for reference only. Subject to change without notice.
 All weights are in pounds, all dimensional units are in inches, unless noted.
 * (2) access doors with gaskets (optional)

ARRANGEMENT II



ARRANGEMENT III

