

Dense Phase Vacuum Loaded Conveyors

Nothing delivers greater flexibility than Cyclonaire's dense phase vacuum-loaded conveyors (DPV). These precisely-engineered pneumatic conveyors allow you to unload bulk bags, trucks and/or railcars with minimal product degradation.

It Takes Superior Equipment to Get Superior Results

Maintain Product Integrity—High material-to-air ratios and low line velocities minimize abrasion and degradation.

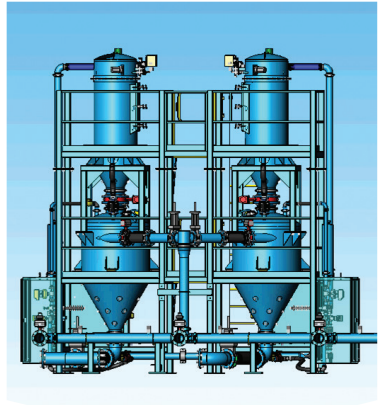
Unique Design and Functionality—Our patented DPV systems vacuum load products from silos, trucks and railcars and feature top or bottom discharge.





Integrate Greater Conveyance Simplicity into Your System

- Single unit can pull from multiple sources and convey to multiple destinations
- Prevents material cross-contamination via system purge or multiple convey lines
- Settings are variable based on product being conveyed and transport distance to provide maximum rate with minimum degradation
- Allows for an automated selection of the material destination to reduce the possibility of operator error



With vacuum load capability, Cyclonaire DPV conveyors require very low headroom for hopper sources (bulk bag unloaders) and save expenses by using shallow pits to pull from bulk trucks or railcars.

Talk to a product specialist about customizing your process with Cyclonaire solutions for greater productivity.

cyclonaire
pneumatic conveying solutions

(800) 445-0730 | cyclonaire.com