



**American Lead and Solder Supply Company  
Lead Products Catalog 2016**

**7056 Archibald St, # 102-434**

**Eastvale, CA 92880**

**Phone; 888-462-8258 toll-free 951-356-4180 local**

**Fax; 951-356-4179**

**Email; [sales.alassco@gmail.com](mailto:sales.alassco@gmail.com)**

**Website; [alassco.com](http://alassco.com)**



# American Lead and Solder Supply Co.

## Lead Products Table of Contents

[Lead Sheet & Strip](#)

[Lead Thickness Chart](#)

[Multi-Pitch & Fixed Pitch Flashing](#)

[Polymer Coated Flashings](#)

[Lead Lined Gypsum Board](#)

[Lead Lined Plywood](#)

[Leaded X-Ray Glass](#)

[X Ray Lead Shielding Size Thickness and Approximate Weight Chart](#)

[Lead: Ingot, Pigs, Wool, Bends, Extruded Bar, Shapes, Wire, Pipe, Tee's & Wedges.](#)

[Flat Lead Bricks & Interlocking Lead Bricks & Caves](#)

---

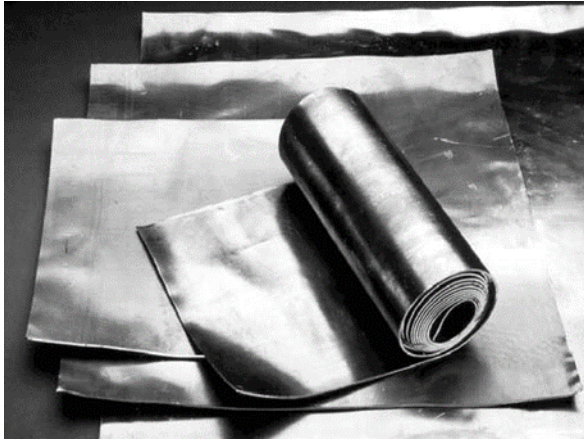
# American Lead and Solder Supply Co.

Lead, Solder, Soldering Supplies and Fasteners

7056 Archibald Ave. Ste. 102-434 - Eastvale, CA. 92880



## Lead Products



### Sheet Lead

2 lb, 2.5 lb, 3 lb, & 4 lb, 6 lb, & 8 lb

30"x30", 36"x36" 3'x20' 4'x20' up to 25' lengths.

Available Direct from the mill.

1 lb, 2 lb, 2.5 lb, 3 lb, 4 lb, 6 lb, 8 lb up to 120 lb per sqft.

24"x24", 30"x30", 36"x36", 48"x48", 48"x84" & 49"x84"

Special sizes are available on special request A \$200.00 minimum applies.



**Strip lead** is manufactured as a cast product instead of rolled on a mill like traditional sheet lead. Strip lead is ideal for waterproofing and flashing applications.

Mayco offers stock strip lead in easy to manage 50 lb. rolls, 2.5 lbs. per square foot (.042" thick), in the various widths.

Standard roll sizes are:

- 6" x 32'
- 8" X 30'
- 10" X 24'
- 12" X 20'
- 14" x 17'
- 16" X 15'
- 18" X 13.33'

As the manufacturer we can make other sizes upon request. Our strip caster is capable of thicknesses from .032" up to .065" thick. Also available in large coils.

## LEAD THICKNESS CHART

We Accept credit cards and open 30 day billing on approved credit.



Thickness	Decimal	mm	Pounds per
* Approximately			
1/64"	.0156"	0.3969mm	1#
1/32"	.0313"	0.795mm	2#
1/24"	.042"	1.067mm	2 1/2#
3/64"	.047"	1.193mm	3#
1/16"	.0625"	1.5875mm	4#
5/64"	.078"	1.9812mm	5#
3/32"	.094"	2.3876mm	6#
1/8"	.1250"	3.1750mm	8#
5/32"	.1562"	3.9675mm	10#
3/16"	.1875"	4.7625mm	12#
1/4"	.2500"	6.3500mm	16#
3/8"	.3750"	9.5250mm	24#
1/2"	.50"	12.7000mm	30#
3/4"	.75"	19.0500mm	46#
1"	1.00"	25.4000mm	60#
1-1/2"	1.50"	38.1000mm	90#
2"	2.00"	50.8000mm	120#

*All sheet lead is manufactured per ASTM and federal specifications. Cut sizes available. These products and materials are for medical, industrial, building, waterproofing and shielding applications. The weights listed are for common lead only.*

### American Lead and Solder Supply

**7056 Archibald Ave. # 102-434**

**Eastvale, CA. 92880**

**Toll Free: 888.462.8258**

**Local: 951.356.4180 Fax: 951.356.4179**

**Email [sales.lassco@gmail.com](mailto:sales.lassco@gmail.com)**



## Lead Vent Pipe Flashing

### Multi-Pitch Lead Roof Flashings

Are made from the highest quality and longest life materials and are ideal for all types of roofing materials. This lead flashing is manufactured to fit any roof pitch, from flat to 3/12 pitch. All sizes will fit any steel, standard or extra heavy soil pipe.

All flashings are made to meet any architectural or Government Specifications. To order Special Flashing's, specify weight of lead, size of flange or base, height of boot and pitch of roof.

All Flashings are available in standard weight Lead 2.5, 3 & 4 lb. per sq. ft. 6 lb. & up available on request.



### Flashing Pitch Conversion Chart

ROOF PITCH ANGLE ROOF PITCH DEGREE

1/12 = 4 1/2
2/12 = 9 1/2
3/12 = 14
4/12 = 18 1/2
5/12 = 22 1/2
6/12 = 26 1/2
7/12 = 30 1/4
8/12 = 33 1/2
9/12 = 36 1/2
10/12 = 39 1/2
11/12 = 42 1/2
12/12 = 45
13/12 = 47
14/12 = 49
15/12 = 51
16/12 = 53
17/12 = 54 1/2
18/12 = 56
12/17 = 35 1/4



## Polymer Coated Flashings

### MayCoat™ Protective Coating:

The unique chemical properties of the Maycoat™ polymer-based compound provide unsurpassed UV corrosion protection when installed outdoors or exposed to sunlight and other UV-producing environments. This means an extra layer of protection for long-term exposed installations.

Unlike traditional PVC-coated components and other coatings and paints, MayCoat™ utilizes proven state-of-the-art thermoplastic coating technologies.

- Highly Durable Coating
  - Flexible Without Cracking
  - Protection Against The Elements
- Field Tested In The Florida Sun

### MayCoat™ Environmental Footprint

- Bendable, long-lasting
  - No VOC's
  - No reactive ingredients
  - No phthalates, halogens or isocyanates
  - No chlorine components, therefore no hydrogen chloride gas emission resulting from burning
- No direct contact between lead and the environment

### Additional MayCoat™ Qualities

- Chemical and galvanic corrosion protection
- Low smoke and flame spread rating
- Superior flexibility, up to 800% elongation without cracking
- Superior mechanical, abrasive, and impact resistance
- Superior finish
- Reduced exposure to lead
- Will not chip or peel like paint
- No exposed lead for rodents to chew

***Currently available only in Black & Gray***



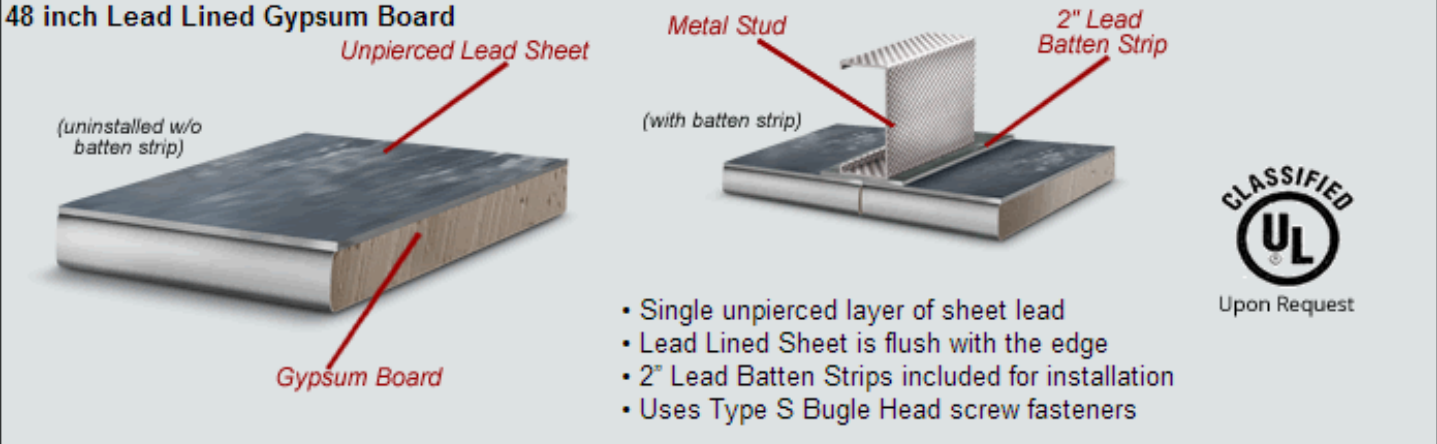
## Lead Lined Gypsum Board

Gypsum Board, also known as leaded drywall, is constructed of a single roll of our own lead sheet, meeting federal specification QQ-L-201 F or ASTM B 749-03 for lead that is laminated to fire code (Type X-Ray Shielded Gypsum) gypsum board meeting classification ASTM C 1396.

LGSCO supplies sheet lead in various thicknesses, depending on the levels of radiation shielding your construction calls for. Most of our lead lined board is shipped as 5/8 inch thick, although 1/2 inch Gypsum Board is available.

**Gypsum Board Sizes:** 4 ft X 8 ft, 4 ft X 9 ft, 4 ft x 10 ft, 4 ft x 12 ft

**48 inch Lead Lined Gypsum Board**



The diagram shows two views of the 48 inch lead lined gypsum board. On the left, the board is shown uninstalled without a batten strip, with labels for 'Unpierced Lead Sheet' and 'Gypsum Board'. On the right, the board is shown installed with a 'Metal Stud' and a '2" Lead Batten Strip'. A UL Classified logo is present on the right side.

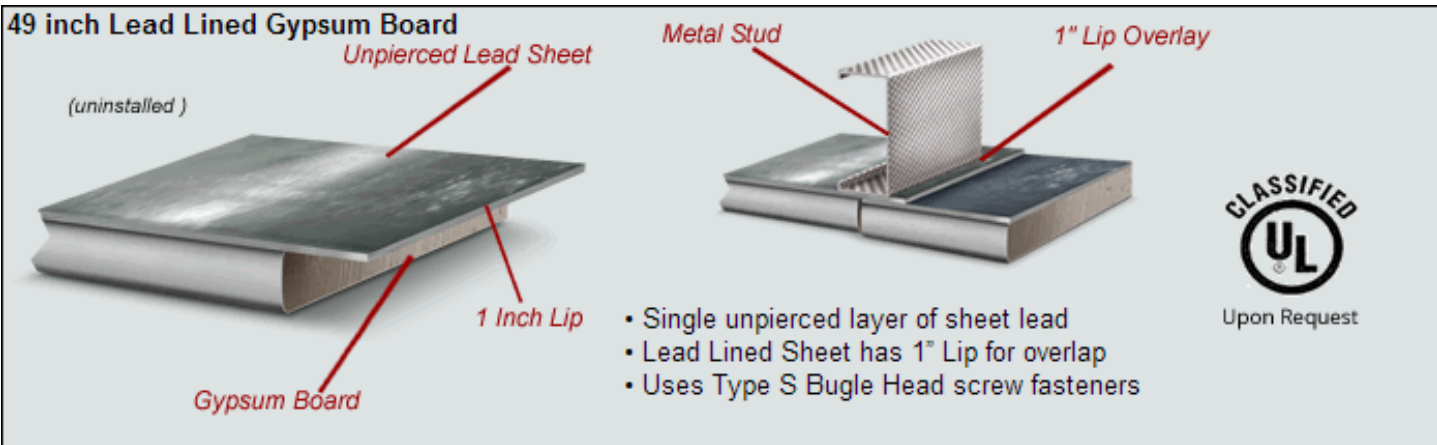
(uninstalled w/o batten strip)

(with batten strip)

- Single unpierced layer of sheet lead
- Lead Lined Sheet is flush with the edge
- 2" Lead Batten Strips included for installation
- Uses Type S Bugle Head screw fasteners

CLASSIFIED  
UL  
Upon Request

**49 inch Lead Lined Gypsum Board**



The diagram shows two views of the 49 inch lead lined gypsum board. On the left, the board is shown uninstalled, with labels for 'Unpierced Lead Sheet' and 'Gypsum Board' and a '1 Inch Lip'. On the right, the board is shown installed with a 'Metal Stud' and a '1" Lip Overlay'. A UL Classified logo is present on the right side.

(uninstalled)

(with batten strip)

- Single unpierced layer of sheet lead
- Lead Lined Sheet has 1" Lip for overlap
- Uses Type S Bugle Head screw fasteners

CLASSIFIED  
UL  
Upon Request

### [49" Submittal Package](#)

Please contact us directly for UL Certified Submittal Packages.

### [Installation Instructions](#)

Custom thicknesses and heights are available upon request.

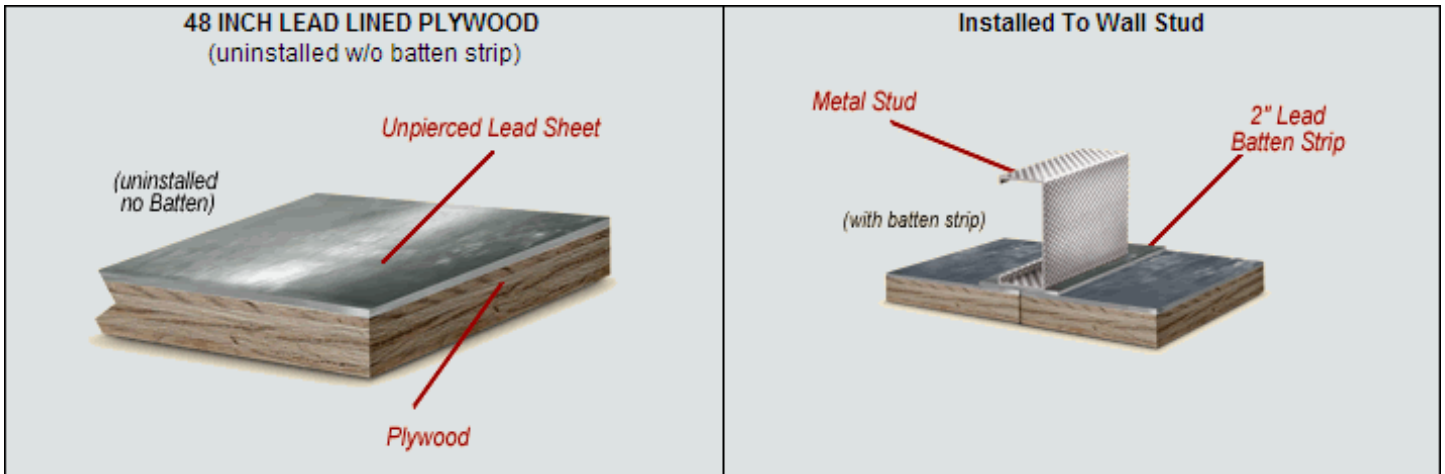
Lead thickness greater than 1/8" should be on [lead-lined plywood](#)



Call, fax or email for pricing and availability:

888-462-8258 toll free - 951-356-4179 fax - Email [sales.alassco@gmail.com](mailto:sales.alassco@gmail.com)

## Lead Lined Plywood



**Lead Lined Plywood** is constructed of a single roll of our own lead sheet, meeting federal specification QQ-L-201 F or ASTM B 749-03 for lead that is laminated to  $\frac{1}{2}$ ",  $\frac{5}{8}$ ",  $\frac{3}{4}$ " or 1" Fire Resistant plywood. The thickness of the plywood is determined by the lead thickness requirements for the level of radiation shielding your construction calls for. Leaded plywood is an excellent way to construct radiation shielded rooms.

Lead lined plywood is furnished in 4' x 8' sheets or can be configured to specifications required. All penetrations into the lead lined area should be lined with lead of the same thickness as the lead used to prevent radiation leakage. LGSCO recommends [Lead Angles](#) for the installation of Lead Lined Plywood.

Lead thickness greater than 1/8" should be on lead-lined plywood.

## X Ray Lead Shielding Size Thickness and Approximate Weight Chart

Thickness	Size	Approximate Weight
1/32	48 x 84	52.00
1/32	49 x 84	54.00
1/32	48 x 96	60.00
1/32	49 x 96	61.00
1/16	48 x 84	105.00
1/16	49 x 84	107.00
1/16	48 x 96	120.00
1/16	49 x 96	122.00
1/8	48 x 84	210.00
1/8	49 x 84	214.00
1/8	48 x 96	240.00
1/8	49 x 96	245.00





**Ingot Lead** is manufactured in 25 lb. strings, consisting of 5 lb. sections. Ingot lead is clean and easy to work with. Our standard ingot contains a minimum of 99.7% lead; 99.9% also available on special request. *Small quantities of standard ingot are available for same day shipping.*

**Pig Lead** is a larger “chunk” of lead typically purchased for re-melt or as ballast. Sold in 50-100 lb. bars, pig lead is available in various alloys. Like our lead ingots, pig lead is clean and easy to work with. We are able to provide pigs individually or in bundles, typically purchased for re-melt or ballast



**Lead Wool**, a form of caulking lead, is comprised of long fine strands of chemical grade lead which are twisted into 5/8” rope for use in various applications.

Available in 5 lb. waterproof bags or 50 lb. cartons. 2-½ ft. of lead wool weighs approximately one lb. (Min. 50 lbs)

Lead wool is certified to meet Federal Specification QQ-C-40. Call for information about Leaded T’s and Lead Wedges

**Lead Bends** are produced on a bend/trap press that allows bending of the lead pipe while extruding the lead. Lead Stub is the name given for short pieces of lead pipe. Stubs and bends are available in 3” or 4” diameters of lead pipe for your application



**Extruded Lead Bar and Lead Wire** are available in a variety of alloys for a variety of applications such as; bullet wire, burning bar, lead anodes, lead buoy weights and lead ballast. We offer many shapes and sizes in both cut lengths and spools.

We can provide lead wire from .093” – .750” diameters in cut lengths and up to approximately 10 ft. and on spools. Standard spools are 25lbs. or 50lbs. or they can be packaged in coils or drums



**Lead Pipe** is extruded to uniform wall thickness and quality. Lead Pipe Sizes from 2” thru 10” are shipped in lengths up to 10 ft.; packed in fiber tubes to ensure straightness.

Sizes 3/8” thru 1½” can be furnished in coils.

## Flat Lead Bricks



**Flat Lead Bricks** are most commonly used for various shielding requirements including x-ray radiation & nuclear shielding. Mayco flat bricks meet or exceed federal specifications for shielding requirements.

Our standard lead brick (2"x4"x8") weighs approx. 26.67 lbs. each. We most commonly offer them the following 3 ways:

1) un-coated, 2) epoxy coated and 3) powder coated.

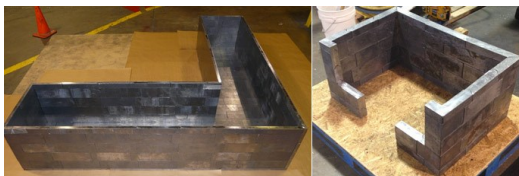
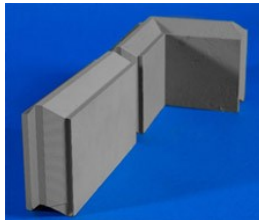
**Un-coated** lead bricks are just as they sound. There will be direct contact with lead and environmental exposure including lead dust and residue. Lead safety practices required with this product.

**Epoxy coating** is a light weight, 2 part paint that allows safe handling, by removing human contact with lead. It also reduces environmental exposure to lead. If bricks will be placed in a location never to be moved this is a sufficient coating.

**Powder coating** is more durable than the basic epoxy coating. It offers the same safe handling and reduced environmental exposure. The powder coating offers a level of durability as well; it will not chip with standard use dents and dings, and has stood up to higher impact testing. Mayco Industries recommends powder coating if bricks will be potentially be moved on a somewhat regular basis.

### Interlocking Lead Bricks & Caves

**Interlocking Lead Bricks** are designed specifically for radiation shielding. Interlocking bricks can be used in the form of walls or "Lead Caves". Our interlocking lead bricks are tongue and groove on four sides and feature a "shoulder edge" for stability.

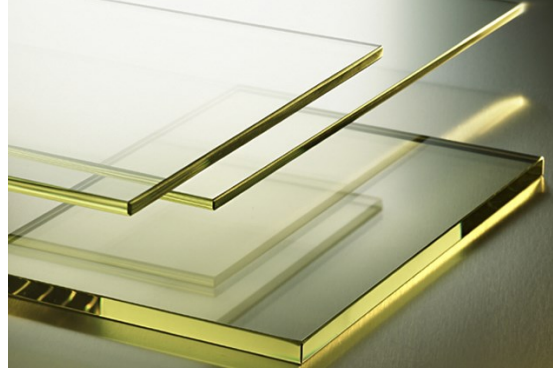


Mayco offers custom designed **Lead Caves**. Our **Machined Brick Lead Caves** feature interlock from every direction. All sides, rows and corners interlock; the bottom and top (if needed) can interlock as well.

Standard Stock Sizes	Approximate Weight
$\frac{3}{4}$ " x 4" x 12"	15 lbs. each
1" x 4" x 12"	20 lbs. each
1-1/2" x 4" x 12"	30 lbs. each
2" x 4" x 8" (most common)	27 lbs. each
2" x 4" x 12"	40 lbs. each
2-1/2" x 4" x 12"	50 lbs. each

### **SPECIFICATIONS FOR X-RAY SHIELDING LEAD GLASS LX- 57B**

X-ray shielding lead glass ( LX-57B ) is a lead-barium glass with more than 60% heavy metal oxide, including at least 55% lead oxide. Both glass surfaces are mirror polished. All edges are beveled. This high optical grade glass meets the standards of safety regulations established for the medical, scientific and nuclear fields. Manufactured by automatic continuous process, this glass is able to maintain a rigidly controlled level of physical properties. It offers high light transmission and does not discolor due to radiation. Its physical



#### **PHYSICAL PROPERTIES**

Minimum Density	4.36 gm/ cm <sup>3</sup>
Refractive Index ( Nd )	1.71
Light Transmission	87.3%
Moh's Hardness	6
Combustibility	None
Thermal Expansion Coefficient	$80 \times 10^{-7} / C^{\circ}$ ( 300 - 3800 )

Thickness	Min./ Max Pb Equiv.	X-ray Peak Voltage	Weight per sq. ft.
8.0	1.8/ 2.0    4.2/ 4.6	150	7.1
11.0	2.5/ 2.7    5.8/ 6.2	150	9.8
14.0	3.0/ 3.2    6.9/ 7.4	200	12.5

Glass is available any size up to and including 48" x 96". Standard stock sizes are offered as listed. Stock sizes listed in inches. Custom sizes cut from appropriate stock sizes.

8x10*	12x18	16x24*	24x30*	30x36	36x72	42x72	48x72*
10x10*	12x20	18x24*	24x36*	32x40	36x84	42x84	48x84*
10x12*	12x24	18x26*	24x48	36x36*	36x96	42x96	48x96*
12x12*	14x18*	20x24	30x30	36x48*	42x48	48x48*	
12x16*	16x20*	24x24*	32x40	36x60	42x60	48x60*	

Stock sizes shown are for 8.0mm glass. Sizes for 11.0mm and 14.0mm, marked with an asterisk (\*), are available in limited quantities. If out of stock, 10- 12 weeks may be required for delivery.