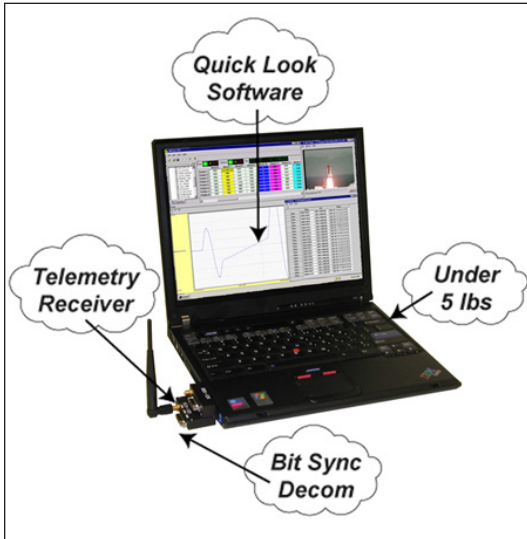


## PSU-2020RBD – Portable Support Unit



### Features

- Portable Telemetry Ground Support System for Data Acquisition Systems
  - End-to-End Testing and System Integration
  - Data Archiving and Quick Look Displays
  - Engineering Unit Conversion
  - Data Acquisition System Programming
- Windows XP Based Notebook Computer (Minimum Specifications)
  - Intel Pentium M Processor operating at 1.6 GHz
  - 256 Mbytes System RAM
  - Combo DVD-ROM/CD-RW
  - 40 GByte Hard Disk
  - 14.1" XGA Active Matrix LCD Display
  - Available Expansion: Two USB (2.0), Parallel, RJ-45 X-Base-T Ethernet, RJ-11 56K bps Modem, IRDA and Analog Monitor Ports
  - Two Type I/II CardBus 32 bit/PCMCIA 2.1 expansion slots used for the Telemetry components provided in the bundled system (RCVR-105 and DBS-120)
- Software Included with the system
  - Microsoft Office Professional
  - Teletronics TTCWare Data Acquisition System support software
  - Teletronics TTCVision Real Time Monitoring and Playback
- Accessories Included
  - USB to RS-232 adapter
  - RCVR-105 Antenna and interface cable
  - DBS-120 I/O cable set

## PHQC-2000 – Pocket-PC Quick-Look Unit with PCM Quick-Look™ Software



### Features

- Portable Quick-Look Unit for TTC's Data Acquisition Systems
  - Display Word, Frame and Data
  - Hex, Decimal, Binary or Octal
  - Display up to 16 words at a Time
- Pocket PC Platform
  - Windows CE Based
- Battery Powered

Revision 05/11/2015

### Ground Support Products Datasheet

©2015 Teletronics - A Curtiss-Wright Company  
Specifications subject to change without notice.

Approved for Public Release 16-S-0074

Teletronics - A Curtiss-Wright Company  
15 Terry Drive, Newtown, PA 18940  
phone: 267.352.2020 fax: 267.352.2021 Sales@ttcdas.com

**www.ttcdas.com**



**Management  
System  
AS9100C  
ISO 9001:2008**

## DBS-120PC – PCMCIA Card 20 Mbps PCM Bit Sync/Decom



### Features

- PCMCIA-based Bit Synchronizer/Data Decommutator
- Bit Sync:
  - Bit Rates up to 20 Mbps, NRZ Codes
  - Input Signal Amplitudes from 0.1 to 5.0 Volts p-p
  - Accepts all IRIG-106 PCM Inputs
  - Provides all IRIG-106 PCM Data Outputs with Coherent Clock
  - Onboard Bit Error Rate Detector and Test Data Simulator
  - Includes Clock Sync Indication
- Decom:
  - PCM Input Rate up to 20 Mbps
  - Accepts RS-422, or TTL Input Data and Clock
  - Onboard Minor Frame Time Tag
- Playback Mode
  - Regenerates Archived PCM at rates up to 20 Mbps
  - RS-422 and TTL Outputs
- Low Power 3.3 VDC Operation
- Windows Compatible Driver Software Included
- Supported by Third Party Data Analysis Software

## RCVR-105 – PCMCIA Card with PCM/FM Receiver/Bit Synchronizer



### Features

- PCMCIA-based PCM/FM Receiver/Bit Synchronizer
- Receiver:
  - L-Band or S-Band Input
  - 20kHz Tuning Resolution
  - Better than 12 dB Noise Figure
  - Greater than 70 dB Dynamic Range
  - Provides RSSI Output
- Bit Sync:
  - Bit Rates up to 5 Mbps, NRZ Codes
  - Accepts all IRIG-106 PCM Inputs
  - Provides all IRIG-106 PCM Data Outputs with Coherent Clock
  - Onboard Bit Error Rate Detector and Test Data Simulator
  - Includes Clock Sync Indication
- Low Power 3.3 VDC Operation
- Windows Compatible Setup Software Included
- Works with the DBS-120PC (Bit Sync/Decom), PSU-2020 (Portable Support Unit) and TTCWare/TTCVision

### Ground Support Products Datasheet

©2015 Teletronics - A Curtiss-Wright Company  
Specifications subject to change without notice.

Approved for Public Release 16-S-0074

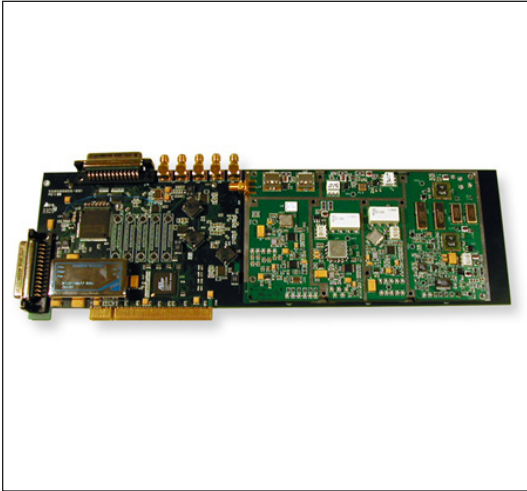
Teletronics - A Curtiss-Wright Company

15 Terry Drive, Newtown, PA 18940

phone: 267.352.2020 fax: 267.352.2021 Sales@ttcdas.com

[www.ttcdas.com](http://www.ttcdas.com)

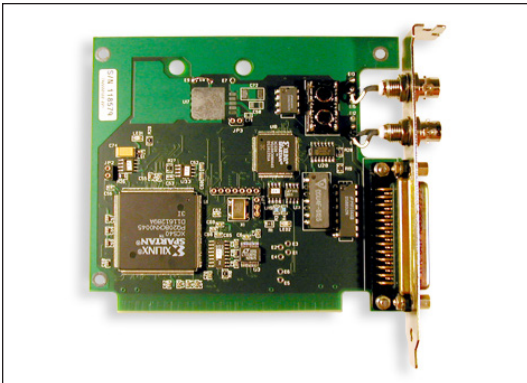
## RBDS-120 – PCI-Based Single Integrated Receiver/Decom/Bit-Sync/Simulator/Time Code Card



### Features

- PC card that plugs into PCI Card Slot with 64 bit/66Mhz operation
- Receiver Function:
  - Using optional Plug-In RF Receiver Modules for various RF bands
- Decom Function:
  - Selectable Decom Inputs: TTL, RS422 or BITSYNC
- Bit Sync Function:
  - Selectable Bitsync Inputs: Analog/TTL or internal RF Receiver
- Built-In IRIG time code reader with IRIG AC/DC inputs for Time Tagging acquired data
- Provides real time data archival of acquired data on local Hard Drive
- Allows frame correlator bypass for throughput mode
- Provides playback of stored data onto PCM output port at archived rate or user programmable rate
- Provides Parallel Output Port for optional DAC Card

## CPM-2000 – PC-Based CAIS Programming and Test Card



### Features

- CAIS Programming Card
- PC-Based ISA Slot Plug-in Card
- Functions as a CAIS “Master Controller for up to 5 Mbps PCM”
- Contains an EEPROM format memory using “true subcommutation”
- Provides the Fundamental System Sampling Rate
- RS232 Interface Port for Format Loading
- Programming Remotes and Data Monitoring
- CAIS Bus Interface/Repeater Port for Format Loading and Programming CAIS System Controller and Remotes
- System Audit and Configuration are Supported through this Card
- Windows XP/2000 Software Included

### Ground Support Products Datasheet

©2015 Teletronics - A Curtiss-Wright Company

*Specifications subject to change without notice.*

Approved for Public Release 16-S-0074

Teletronics - A Curtiss-Wright Company

15 Terry Drive, Newtown, PA 18940

phone: 267.352.2020 fax: 267.352.2021 Sales@ttcdas.com

**www.ttcdas.com**

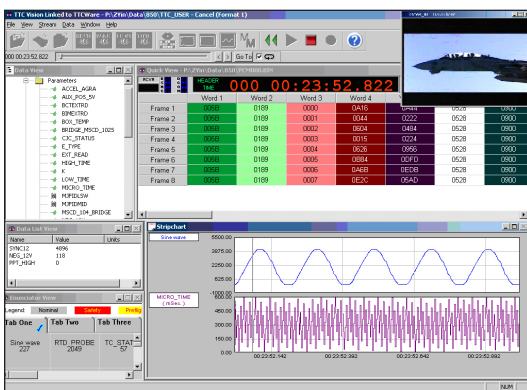
## RMOR-2000D – Rack-mounted Output Reproducer Unit



### Features

- Ground-station Demux/Playback Unit
- Support for TTC's Airborne Products
  - MARM-2000 Real Time Mux Unit
  - MCV-101 Video Input Module
  - CVC-101 Video Input Card
- Reproduce PCM Data Stream and Video
- Real-Time/Reproduce Operation
- DMX-100 PCM Input Card
  - 20 Mbps Aggregate Input Rate
  - Accepts PCM and Zero-Phase Clock
- BSC-200 Bit-Sync Card
- DRS-232 Dual Output Card
- SOC-102 Dual PCM Output Card
  - 2 Channel PCM Regenerator
  - 10 Mbps Output Rate per Channel
  - PCM and Zero-Phase Clock Outputs
- DVC-101D Output Card
  - 1 Channel Output Card
  - PCM or RS-170 Video Output
- REC-1XX Recorder Interface Card
  - Recording Format Not Dependent on the Type of Recorder
  - Operation to 20 Mbps
  - Incremental Recorder Support
- 19" Rack Mount Chassis
  - 1 Single Unit (Option D-1)
  - 1 Dual Unit (Option D-2)
  - 1110-220 VAC, 50-60 Hz Operation
- Windows 95/98/NT/2000 Software Included

## TTCvision – Software for PCM Data Analysis and Graphical Display



### Features

- Works with either Real-time or Archived Data
- Supports Integration, Validation and Maintenance of TTC's Data Acquisition Systems
- Engineering Units Processing allows Polynomial Transformations to be applied to each word in the PCM Format
- Drag and Drop Configuration of Strip Chart Data Display
- User configurable Alarm Ranges and Annunciator to display warnings when limits are violated
- Multimedial Routing of parameters to either Audio or Video playback
- Configures Decom and Bit Sync Devices for PCM data
- Creates Concatenations of 1 to 4 parameters, with the ability to apply Bit Masks to each parameter

### Ground Support Products Datasheet

©2015 Teletronics - A Curtiss-Wright Company  
Specifications subject to change without notice.

Approved for Public Release 16-S-0074

Teletronics - A Curtiss-Wright Company

15 Terry Drive, Newtown, PA 18940

phone: 267.352.2020 fax: 267.352.2021 Sales@ttcdas.com

[www.ttcdas.com](http://www.ttcdas.com)