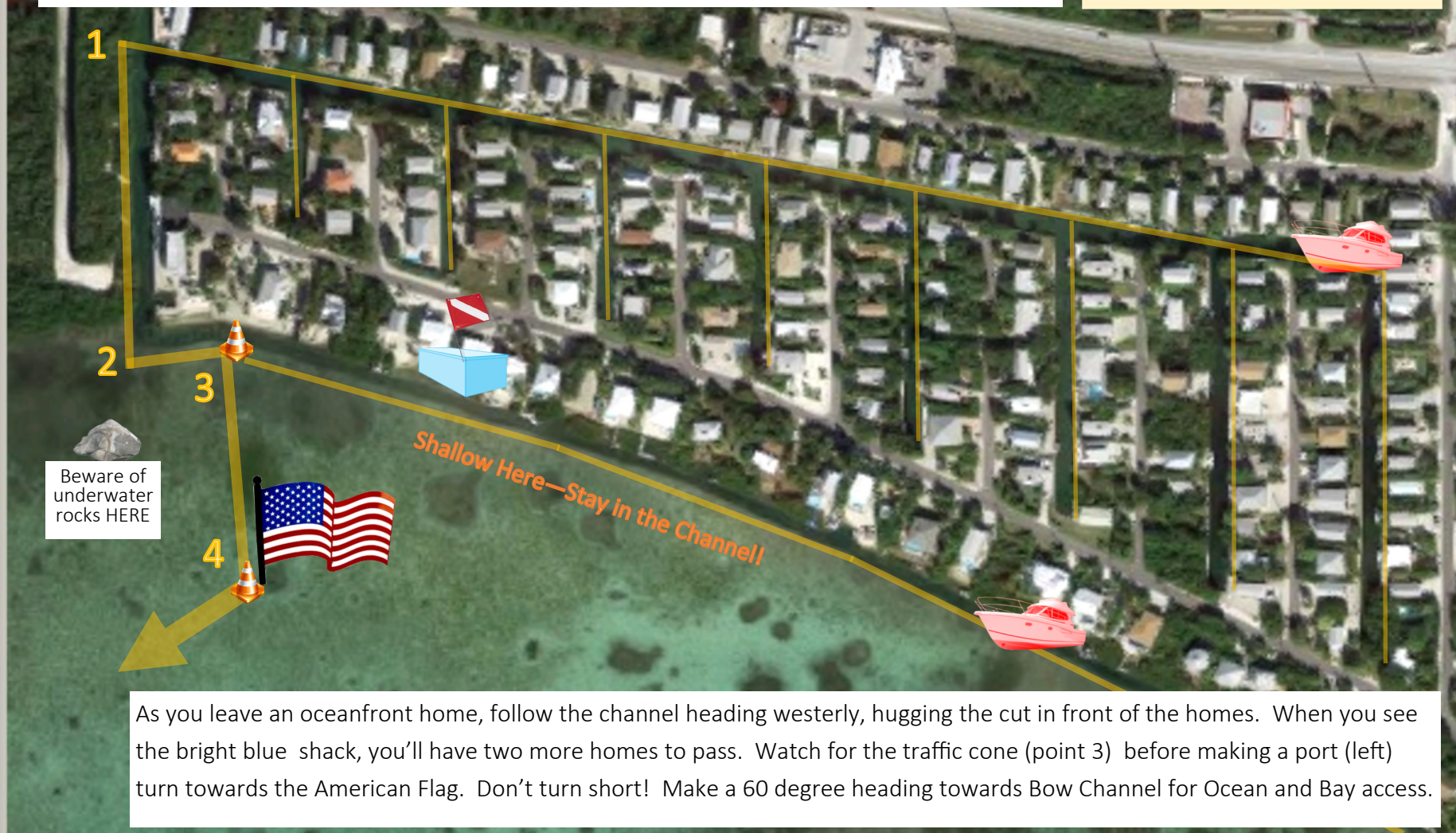


As you leave a canal front home, head westerly on the long canal parallel to US 1, or northerly on one of the connecting canals until you reach the long canal. Follow to the west junction (point 1). Head southerly to the canal opening (point 2). When you reach point 2, turn the boat to the port (left) and look for the orange traffic cone in front of the second house from end. When you reach point 3, turn the boat starboard (right) and head towards the American flag/traffic cone in the bay (point 4). Make a 60 degree heading towards Bow Channel for Ocean and Bay access.

Cutthroat Harbor Estates

Local Boating Knowledge
for the canals west of
Cutthroat Drive.

No Wake until past the Flag!



As you leave an oceanfront home, follow the channel heading westerly, hugging the cut in front of the homes. When you see the bright blue shack, you'll have two more homes to pass. Watch for the traffic cone (point 3) before making a port (left) turn towards the American Flag. Don't turn short! Make a 60 degree heading towards Bow Channel for Ocean and Bay access.