



Smart LED Streetlight



The images are merely illustrative, some technical features and accessories may be changed without notice.



December 2016

For additional information, please contact us
www.teslights.com - info@teslights.com



Lighting facts, DLC and ETL applies for Shoebox luminaire
 ETL applies for SLM and SLP luminaire



Product Description

Technological stability and economy of operation make Teslights' LED Streetlights the first choice of professional planners for delivering precise illumination over streets, highways, public buildings, and parking lots. Advanced integrations with Teslights sensor and controller technologies now allow for full participation in increasingly popular worldwide initiatives for developing "Smart" cities. While reducing maintenance costs and improving performance, the superior quality output of the Teslights LED Streetlights deliver immediate modernization in illumination.



Key Features

- **Anodized Aluminum heat sink**
- **Modular manufacturing process**
- **5 year factory warranty**
- **No rewiring of fixture, minimizing replacement and maintenance costs**



Product Specifications

Streetlight B

LED package:	SMD 3030
Power consumption:	30 - 150W $\pm 5\%$
Input voltage:	100~277V AC 50/60Hz
Efficacy:	Up to 110 lm/W
THD:	<18%
P.F.:	>0.95
CRI:	>72
Dimming:	0-10V
Material:	6030 aluminum alloy and pc cover
Beam angle:	120°
IP rating:	IP65
Fire rating:	94V0
Operating temperature:	-25°C ~ + 50°C
Lifespan:	Up to 50,000 hours

Streetlight P

LED package:	SMD 3030
Power consumption:	50 - 300W $\pm 5\%$
Input voltage:	100~277V AC 50/60Hz
Efficacy:	Up to 150 lm/W
THD:	<18%
P.F.:	>0.99
CRI:	>72
Dimming:	0-10V
Material:	6030 aluminum alloy and pc cover
Beam angle:	120°
IP rating:	IP65
Fire rating:	94V0
Operating temperature:	-25°C ~ + 50°C
Lifespan:	Up to 50,000 hours

Streetlight M

LED package:	SMD 3535
Power consumption:	30 - 90W $\pm 5\%$
Input voltage:	100~277V AC 50/60Hz
Efficacy:	Up to 100 lm/W
THD:	<20%
P.F.:	>0.95
CRI:	>70
Dimming:	0-10V
Material:	Stretching aluminium + PC + stainless steel fitting
Beam angle:	120°
IP rating:	IP65
Fire rating:	94V0
Operating temperature:	-25°C ~ + 50°C
Lifespan:	Up to 50,000 hours

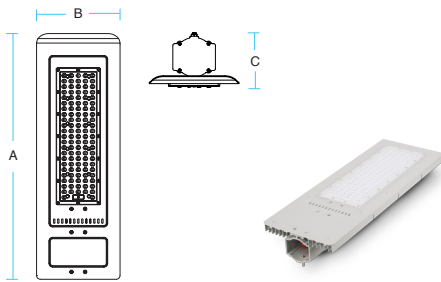
Shoobox

LED package:	Lumileds
Power consumption:	80 - 320W $\pm 5\%$
Input voltage:	100~277V AC 50/60Hz
Efficacy:	Up to 100 lm/W
THD:	<18%
P.F.:	>0.90
CRI:	>70
Dimming:	NO
Material:	Anodized Aluminum heat sink and polycarbonate cover
Beam angle:	100°
IP rating:	IP65
Fire rating:	94V0
Operating temperature:	-25°C ~ + 50°C
Lifespan:	Up to 50,000 hours



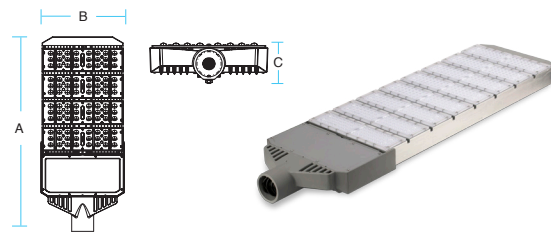
Product Measurement

Streetlight B



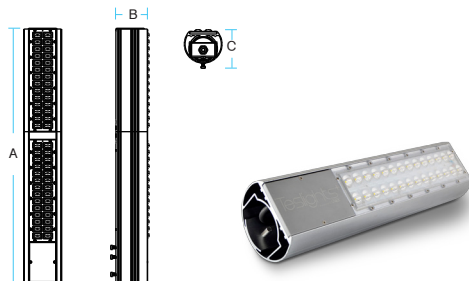
Model	Measures (AxBxC)	Pole diameter
SL-B 30W/40W	364.8 x 135.0 x 89.3 mm	40 or 60 mm
SL-B 60W/90W	431.3 x 160.0 x 89.3 mm	40 or 60 mm
SL-B 120W/150W	631.7 x 215.0 x 89.8 mm	40 or 60 mm

Streetlight P



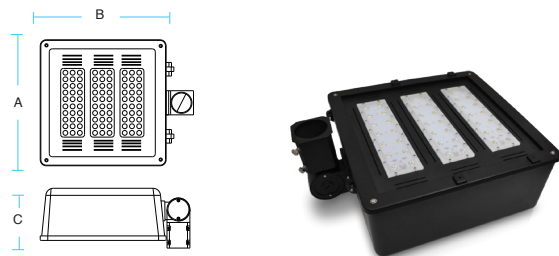
Model	Measures (AxBxC)
SL-P 30W to 50W	423 x 292 x 98 mm
SL-P 60W to 100W	495 x 292 x 98 mm
SL-P 90W to 150W	587 x 292 x 98 mm
SL-P 120W to 200W	679 x 292 x 98 mm
SL-P 180W to 300W	711 x 292 x 98 mm

Streetlight M



Model	Measures (AxBxC)
SLM - 30W	372 x 87 x 98 mm
SLM - 60W	658 x 87 x 98 mm
SLM - 90W	944 x 87 x 98 mm

Shoobox



Model	Measures (AxBxC)
SB 80 to 320 W	418 x 418 x 173 mm



Ordering Guide

Example: SLPP150M150C50

Type	Dim or Non-Dim		Watts		Driver/Power		Efficiency		Cover		CCT		Pole Size	
SLP	P		150		M		150		C		50			
SLB	S P	Non dimmable Dimmable	60 120 150	60 W 120 W 150 W	M	Internal 100-277 V 50/60 Hz	110 110 lm/W		C	Clear	50 5000		40 60	40 mm 60 mm
SLP	S P	Non dimmable Dimmable	100 150 200 250	100 W 150 W 200 W 250 W	M	Internal 100-277 V 50/60 Hz	100 150 100 lm/W 150 lm/W		C	Clear	50 5000		-	-

Note: We can also produce SLB and SLP in different Wattages, lumens variations and color temperatures.
For more information contact your account manager.

Example: SLMP100M100C50

Type	Dim or Non-Dim		Watts		Driver/Power		Efficiency		Cover		CCT	
SLM	P		100		M		100		C		50	
SLM	S P	Non dimmable Dimmable	30 60 90	30 W 60 W 90 W	M	Internal 100-277 V 50/60 Hz	100	100 lm/W	C	Clear	30 40 50	3000 4000 5000

Example: SBS100M160C50

Type	Dim or Non-Dim		Watts		Driver/Power		Efficiency		Cover		CCT	
SB	S		160		M		100		C		50	
SB	S	Non dimmable	80 120 160 240 320	80 W 120 W 160 W 240 W 320 W	M	Internal 100-277 V 50/60 Hz	100	100 lm/W	C	Clear	30 40 50	3000 4000 5000



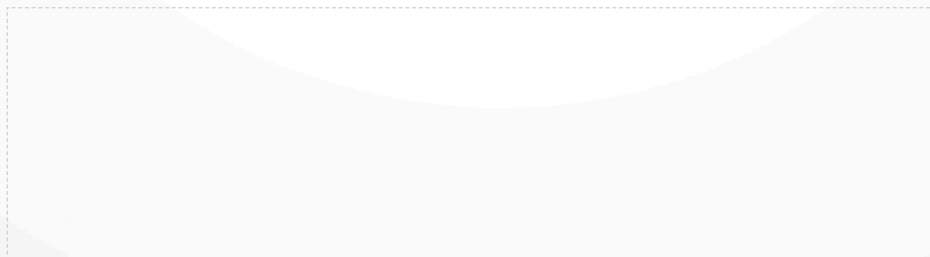
Installation

1. Turn off power to circuit.
2. Wire appropriate connectors and ensure no wire is exposed.
3. Loosen mounting screws and insert pole into fixture. Tighten mounting screws securely.
4. Turn on circuit and check that everything is functioning properly.

NOTE: Reference www.teslights.com/products for detailed installation instructions

Teslights⁺

by SCALAMAX



World Headquarters
1405 Corporate Center Pkwy.
Santa Rosa, CA 95407
USA
+1 844 TESLITE
www.teslights.com - info@teslights.com