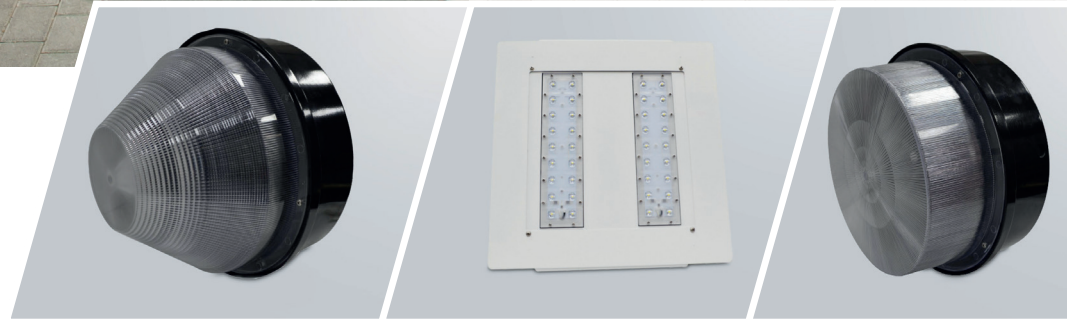


# Teslights+ by SCALAMAX



## Fuel Station Lighting LED CANOPY & LED GAS STATION



The images are merely illustrative, some technical features and accessories may be changed without notice.



December 2016

UL certification only apply for Canopy luminaire

For additional information, please contact us  
[www.teslights.com](http://www.teslights.com) - [info@teslights.com](mailto:info@teslights.com)



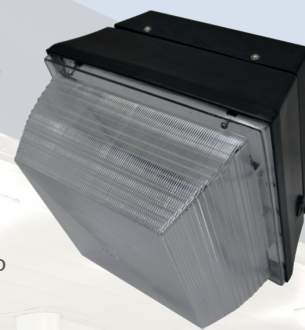




## Product Description

Teslights Gas Station and Canopy LED Lights are ideal for gas stations designed with high service ceilings for refueling both cars and long-haul trucks. Optimal for advantageously replacing metal halide and sodium vapor lamps (up to 400W) with a single 120W LED, Teslights ultra-efficient LED Lighting technologies are internationally certified to the industry's highest standards of quality, and factory guaranteed for five years.

The Gas Station and Canopy LED series are supremely attractive choices for welcoming commercial activity to fuel stations, and for illuminating any area requiring weather-resistant lighting that also helps to reduce the accumulation of insect pests.



## Key Features

- Excellent optical presentation for gas station lighting
- Anodized Aluminum heat sink
- Modular manufacturing process
- Driver with protection OVP, OCP, SCP and OTP
- 5 year factory warranty
- No rewiring of fixture, minimizing replacement and maintenance costs



## Product Specifications

### CANOPY

<b>LED package:</b>	CREE LED Chip
<b>Power consumption:</b>	40 - 100W ±5%
<b>Input voltage:</b>	100~277V AC 50/60Hz
<b>Efficacy:</b>	Up to 100 lm/W
<b>THD:</b>	<18%
<b>P.F.:</b>	>0.90
<b>CRI:</b>	>80
<b>Dimming:</b>	No
<b>Material:</b>	Die-casting aluminum housing with gasket
<b>Beam angle:</b>	120°
<b>IP rating:</b>	IP65
<b>Fire rating:</b>	94V0
<b>Operating temperature:</b>	-25°C ~ + 45°C
<b>Lifespan:</b>	Up to 50,000 hours

### GAS STATION

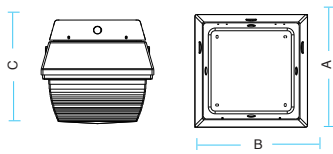
<b>LED package:</b>	Luxeon T-Chip
<b>Power consumption:</b>	80 - 120W ±5%
<b>Input voltage:</b>	100~277V AC 50/60Hz
<b>Efficacy:</b>	Up to 100 lm/W
<b>THD:</b>	<15%
<b>P.F.:</b>	>0.95
<b>CRI:</b>	>80
<b>Dimming:</b>	No
<b>Material:</b>	Anodized aluminum heat sink
<b>Beam angle:</b>	60°, 90°, 100°, 120°
<b>IP rating:</b>	IP65 and IP67
<b>Fire rating:</b>	UL 94V0
<b>Operating temperature:</b>	-40°C ~ + 50°C
<b>Lifespan:</b>	Up to 50,000 hours



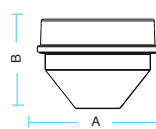
## Product Measurement

### CANOPY

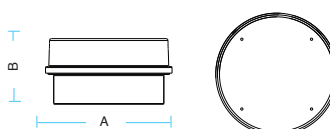
CNA



CNB

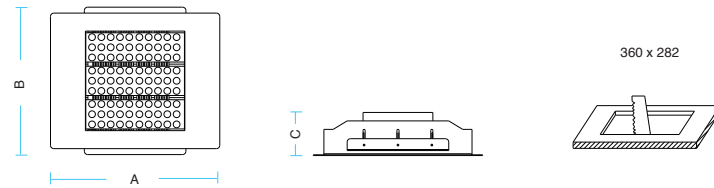


CNC



Model	Measures (AxBxC)
CNA	315 x 315 x 280 mm
CNB	Ø385 x 275 mm
CNC	Ø385 x 215 mm

### GAS STATION



Model	Measures (AxBxC)
GS	400 x 348 x 111.8 mm



## Ordering Guide

### CANOPY

Example: CNAS80M100C40

Type	Dimm or non-dimm	Watts	Driver/Power	Efficacy	Cover	CCT
<b>CNA</b>	<b>S</b>	<b>80</b>	<b>M</b>	<b>100</b>	<b>C</b>	<b>40</b>
CNA	S	Non-dimmable	M	100	C	40
CNB	S	Non-dimmable	M	100	C	40
CNC	S	Non-dimmable	M	100	C	40

### GAS STATION

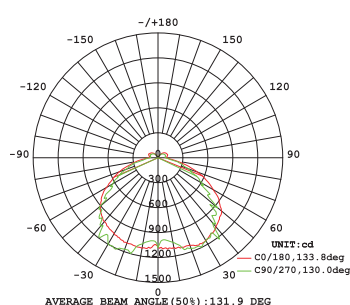
Example: GSS120M100C50

Tipo	Dimm or non-dimm	Watts	Driver/Power	Efficacy	Cover	CCT
<b>GS</b>	<b>S</b>	<b>120</b>	<b>M</b>	<b>100</b>	<b>C</b>	<b>50</b>
GS	S	Non-dimmable	M	100	C	50
		80W	Internal	100 lm/W		3000K
		120W	100-277V			4000K
			50/60Hz			5000K
						6000K

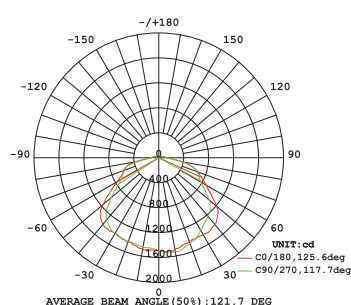


## Photometric Polar Diagram

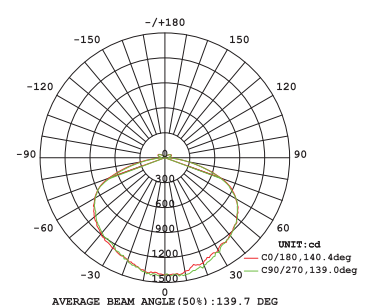
CNA



CNB



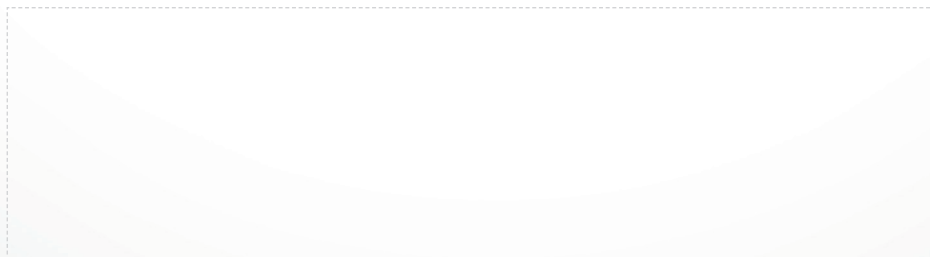
CNC



NOTE: If you need photometric information of this or another product, do not hesitate in contact us.

# Teslights<sup>+</sup>

by SCALAMAX



**World Headquarters**  
1405 Corporate Center Pkwy.  
Santa Rosa, CA 95407  
USA  
+1 844 TESLITE  
[www.teslights.com](http://www.teslights.com) - [info@teslights.com](mailto:info@teslights.com)