



Product Guide



All products are available through your local hospitality distributor.

If you would like information on finding a distributor in your area, please contact WestPoint Hospitality at (877) 699-0406.

martex


GRAND
PATRICIAN

 EcoPure™
EARTH FRIENDLY AND SUSTAINABLE

FIVE STAR

hotel
COLLECTION

Textile Solutions For A Better Guest Experience

Table of Contents

| | |
|--|-----------|
| Towels | 4 |
| Pool Towels | 5 |
| Sheets | 6 |
| Mattress Pads | 8 |
| Blankets/Duvet Inserts | 11 |
| Blankets | 12 |
| Top of Bed Accessories | 14 |
| Live Free Bed Bug Barrier Systems | 20 |

TOWELS



Martex® Brentwood Towels

Features:

- Combines luxury and affordability into a 100% cotton dobby ensemble
- Superior absorbency & natural hand
- Distinctive dobby border design
- Lock stitched, bar tacked hems for longer life and durability

Available to:



| Martex® Brentwood | Size | Weight (lb/dz) | SKU | Best Western® | Best Western Plus® | Best Western Premier® |
|------------------------|----------|----------------|---------|---------------|--------------------|-----------------------|
| T2450 WHITE Bath | 27 x 50" | 14 | 7089114 | | • | • |
| T3480 WHITE Bath Sheet | 30 x 60" | 20 | 7089126 | | | • |
| T3481 WHITE Hand | 16 x 30" | 4.5 | 7089139 | | • | • |
| T8324 WHITE Tubmat | 20 x 34" | 10 | 7089287 | | • | • |
| T9070 WHITE Bath | 27 x 54" | 15 | 7089376 | | • | • |
| T9110 WHITE Bath | 27 x 54" | 17 | 7089231 | | • | • |
| T9111 WHITE Hand | 16 x 30" | 5.75 | 7089235 | | • | • |
| T9912 WHITE Wash | 13 x 13" | 1.5 | 7103833 | | • | • |
| TA072 WHITE Wash | 13 x 13" | 1.75 | 7117703 | | • | • |

* Highlighted products are recommended



Martex® Cam Towels

Features:

- Blended base/100% ring spun cotton loops
- Single or double decorative border
- Intelliweave™ construction provides durability, dimensional stability, and fast-drying properties
- Lock-stitched, bar-tacked hems for great durability

Available to:



| Martex® Cam | Size | Weight (lb/dz) | SKU | Best Western® | Best Western Plus® | Best Western Premier® |
|--------------------|----------|----------------|---------|---------------|--------------------|-----------------------|
| T1361 WHITE Hand | 16 x 27" | 13 | 7088634 | • | | |
| T5404 WHITE Tubmat | 20 x 30" | 17 | 7088544 | • | | |
| T8400 WHITE Bath | 25 x 54" | 13.5 | 7088601 | • | | |
| T8401 WHITE Hand | 16 x 27" | 3.5 | 7088603 | • | | |
| T9160 WHITE Bath | 25 x 54" | 12.5 | 7088624 | • | | |
| TA092 WHITE Wash | 12 x 12" | 1 | 7117709 | • | | |

* Highlighted products are recommended

POOL TOWELS



Martex® Cabana Collection Pool Towels

Features:

- 100% Ring Spun, Cotton Loops
- Made with Intelliweave™ to provide dimensional stability, durability, and fast-drying properties
- Staybright® bleach-friendly and fade-resistant technology

Available to:



| Martex® Cabana Collection | Size | Weight (lb/dz) | SKU | Best Western® | Best Western Plus® | Best Western Premier® |
|-------------------------------|----------|----------------|---------|---------------|--------------------|-----------------------|
| TA027 DARK LINEN | 30 x 66" | 13 | 7105824 | | • | • |
| TA027 DEEP SEA | 30 x 66" | 13 | 7105825 | | • | • |
| TA027 WHITE | 30 x 66" | 13 | 7105826 | | • | • |
| TA037 Deep Sea/White Stripe | 30 x 66" | 13 | 7106294 | | • | • |
| TA037 Dark Linen/White Stripe | 30 x 66" | 13 | 7106293 | | • | • |

* Highlighted products are recommended



Martex® Pool Towels

Features:

- 100% Ring Spun, Cotton Loops
- Made with Intelliweave™ to provide dimensional stability, durability, and fast-drying properties
- Double Dobby Border is made with Staybright® Technology

Available to:



| Martex® | Size | Weight (lb/dz) | SKU | Best Western® | Best Western Plus® | Best Western Premier® |
|---|----------|----------------|---------|---------------|--------------------|-----------------------|
| TA04 Morning Glory Stripe w/Staybright® | 24 x 50" | 10.5 | 7109426 | | • | • |
| T3800 Pale Jade | 24 x 48" | 8 | 7089396 | • | | |

* Highlighted products are recommended

SHEETS



Martex® DryFast® Sheets



Features:

- 200 Thread Count Cotton Rich Blend
- Sewn-in colored hem threads help to easily indicate sheet size
- 60% Cotton/ 40% Polyester
- Energy/Labor savings from reduced drying and laundry cycle times
- Stain Product Recovery reduces the number of re-wash loads and replacement costs due to stains
- Reduced environmental impact from CO² emissions due to lower laundry drying times
- GSA Compliant

Available to:



| Martex® T200 DryFast® | Finished Sizes | Hem | SKU |
|-----------------------|----------------|--------------|---------|
| Pillow Case | 20 x 30" | 2" | 1A29682 |
| | 20 x 30" | 3" | 1A29681 |
| | 20 x 34" | 3" | 1A27385 |
| | 20 x 40" | 3" | 1A27879 |
| Flat Sheet | 66 x 104" | 2 x 2" | 1A29684 |
| | 81 x 104" | 2 x 2" | 1A29685 |
| | 81 x 114" | 2 x 2" | 1A29686 |
| | 90 x 104" | 2 x 2" | 1A29687 |
| | 90 x 114" | 2 x 2" | 1A29701 |
| | 108 x 104" | 2 x 2" | 1A29702 |
| | 108 x 114" | 2 x 2" | 1A29703 |
| | Fitted Sheet | 39 x 75 x 9" | |
| 39 x 80 x 9" | | | 1A29713 |
| 39 x 75 x 12" | | | 1A29705 |
| 39 x 80 x 12" | | | 1A29714 |
| 54 x 80 x 12" | | | 1A29711 |
| 60 x 80 x 12" | | | 1A29715 |
| 78 x 80 x 12" | | | 1A29716 |

| Martex® T250 DryFast® | Finished Sizes | Hem | SKU |
|-----------------------|----------------|-----|---------|
| Pillow Case | 20 x 30" | 4" | 1S12308 |
| | 20 x 34" | 4" | 1S12309 |
| | 20 x 40" | 4" | 1S10205 |

SHEETS



Martex® Millennium Sheets

Features:

- 60% Cotton/ 40% Polyester
- Balanced, percale weave construction for lasting durability
- Sewn-in colored hem threads help to easily indicate sheet size
- Lock-stitched hems to prevent unraveling and fraying
- GSA Compliant

Available to:



| Martex® T200 Millennium | Finished Sizes | Hem | SKU |
|-------------------------|----------------|------------|---------|
| Pillow Case | 20 x 30" | 2" | 1A30170 |
| | 20 x 30" | 3" | 1A30167 |
| | 20 x 34" | 3" | 1A30168 |
| | 20 x 40" | 3" | 1A30169 |
| Flat Sheet | 66 x 98" | 2 x 2" | 1A38665 |
| | 66 x 102" | 2 x 2" | 1A38666 |
| | 66 x 104" | 2 x 2" | 1A30171 |
| | 66 x 109" | 2 x 2" | 1A38664 |
| | 81 x 98" | 2 x 2" | 1A38667 |
| | 81 x 102" | 2 x 2" | 1A37130 |
| | 81 x 104" | 2 x 2" | 1A30172 |
| | 81 x 109" | 2 x 2" | 1A37131 |
| | 81 x 114" | 2 x 2" | 1A30173 |
| | 90 x 104" | 2 x 2" | 1A30174 |
| | 90 x 109" | 2 x 2" | 1A37132 |
| | 90 x 114" | 2 x 2" | 1A30175 |
| | 96 x 109" | 2 x 2" | 1A38669 |
| | 108 x 104" | 2 x 2" | 1A30176 |
| | 108 x 109" | 2 x 2" | 1A37133 |
| | Fitted sheet | 108 x 114" | 2 x 2" |
| 39 x 75 x 9" | | | 1A30178 |
| 39 x 80 x 9" | | | 1A30181 |
| 54 x 75 x 9" | | | 1A38691 |
| 54 x 80 x 9" | | | 1A38688 |
| 60 x 80 x 9" | | | 1A38689 |
| 78 x 80 x 9" | | | 1A38690 |
| 39 x 75 x 12" | | | 1A30179 |
| 39 x 80 x 12" | | | 1A30183 |
| 54 x 80 x 12" | | | 1A30180 |
| 60 x 80 x 12" | | | 1A30185 |
| 78 x 80 x 12" | | | 1A30186 |
| 72 x 84 x 12" | | | 1A38692 |
| 72 x 80 x 12" | | | 1A38671 |
| 54 x 80 x 15" | | 1A38670 | |
| 60 x 80 x 15" | | 1A38682 | |
| 78 x 80 x 15" | | 1A38683 | |

| Martex® T250 Millennium | Finished Sizes | Hem | SKU |
|---------------------------------|----------------|-----|---------|
| Pillow Case | 20 x 30" | 4" | 1A37109 |
| | 20 x 34" | 4" | 1A38073 |
| | 20 x 40" | 4" | 1A38072 |
| Martex® T250 Millennium- Stripe | Finished Sizes | Hem | SKU |
| Pillow Case | 20 x 30" | 4" | 1A86215 |
| | 20 x 34" | 4" | 1A86217 |
| | 20 x 40" | 4" | 1A86216 |

MATTRESS PADS



EcoPure™ Mattress Pad

Features:

- 240 Thread Count
- 100% Cotton Cover
- Filled with 6oz 100% Recycled Fiber
- Quilted 6" Channel Pattern
- Smooth Flex Skirt fits up to a 20" mattress depth
- Easy Care, Machine Wash and Dry

Available to:



| EcoPure™ | Size | SKU |
|-----------|----------|---------|
| Twin | 39 x 75" | 5010535 |
| Twin XL | 39 x 80" | 5007627 |
| Full | 54 x 75" | 5007626 |
| Queen | 60 x 80" | 5007629 |
| King | 78 x 80" | 5007630 |
| Cal. King | 72 x 84" | 5007628 |



Martex® Brentwood II Mattress Topper

Features:

- 200 Thread Count, 60% Cotton/ 40% Polyester Fabric
- EcoPure™ Polyester 20oz fiberfill
- Quilted Channel Pattern minimizes Fiberfill Migration
- 2" Anchor Bands on all four corners
- GSA Compliant

Available to:



| Martex® Brentwood II | Size | SKU |
|----------------------|----------|---------|
| Twin | 39 x 75" | 5012978 |
| Twin XL | 39 x 80" | 5012979 |
| Full | 54 x 75" | 5012980 |
| Full XL | 54 x 80" | 5012983 |
| Queen | 60 x 80" | 5012981 |
| King | 78 x 80" | 5012982 |

MATTRESS PADS



Martex® Basics Fitted Mattress Pads

Features:

- Woven blended fabric on face and back
- 130 Thread Count, 70% Polyester/ 30% Cotton Fabric
- EcoPure™ Polyester fiberfill available in 5oz and 3oz weights (4oz for Choice Woven)
- All around fitted skirt (15" fits up to 18" mattress, 12" fits up to 14" mattress)
- Ogee Quilt Pattern prevents Fiberfill Migration
- GSA Compliant

Available to:



| Martex® Basics (Fitted) | Size | Deluxe Woven 15" | Deluxe Woven 12" | Choice Woven |
|-------------------------|----------|------------------|------------------|--------------|
| Twin | 39 x 75" | 5012511 | 5012690 | |
| Twin Long | 39 x 80" | 5012996 | | 5012539 |
| Full | 54 x 75" | 5012512 | 5012693 | |
| Full Long | 54 x 80" | | | 5012540 |
| Queen | 60 x 80" | 5012513 | 5012691 | 5012541 |
| King | 78 x 80" | 5012514 | 5012692 | 5012542 |

Martex® Basics Anchor Band Mattress Pads

Available to:



Features:

- Non-Woven polyester fabric on face and back
- EcoPure™ Polyester 3oz fiberfill
- Quilted Channel Pattern minimizes Fiberfill Migration
- 1" Anchor Bands on all four corners can fit 8"-12" mattresses
- GSA Compliant

| Martex® Basics (Anchor Band) | Size | Choice Woven | Essential Non-Woven |
|------------------------------|----------|--------------|---------------------|
| Twin | 39 x 75" | | |
| Twin Long | 39 x 80" | 5012535 | 5012531 |
| Full | 54 x 75" | | |
| Full Long | 54 x 80" | 5012536 | 5012532 |
| Queen | 60 x 80" | 5012537 | 5012533 |
| King | 78 x 80" | 5012538 | 5012534 |

MATTRESS PADS



Silent Choice® Waterproof Mattress Pad

Features:

- Polyester Brushed Microfiber top for comfort
- Filled with 5.5oz Polyester fiberfill
- Soft and silent fabricated urethane moisture barrier
- Smooth Flex Skirt fits up to a 14" Mattress Depth

Available to:



| Silent Choice® Waterproof | Size | SKU |
|---------------------------|----------|---------|
| Twin | 39 x 75" | 5009088 |
| Full | 54 x 75" | 5009089 |
| Queen | 60 x 80" | 5009090 |
| King | 78 x 80" | 5009091 |

* Products are recommended for all BW properties



Tough One® Fiber Mattress Pad

Features:

- 100% Polyester
- 9.6oz weight per sq. yd
- Strong & Durable Woven Fiber
- Stitched around construction
- Colored Hem Threads
- Available in flat, fitted, and anchor band
- GSA Compliant

Available to:



| Tough One® Fiber | Size | Flat | Fitted | Anchor Band |
|------------------|----------|---------|---------|-------------|
| Twin | 39 x 75" | C116801 | C115801 | C116301 |
| Twin Long | 39 x 80" | C119101 | C175001 | C175601 |
| Twin XXL | 36 x 84" | | C119701 | |
| Full | 54 x 75" | C116901 | C115901 | C116401 |
| Full Long | 54 x 80" | C170201 | C119501 | C119401 |
| Queen | 60 x 80" | C118601 | C116001 | C116501 |
| King | 78 X 80" | C118701 | C116101 | C116601 |

BLANKETS/DUVET INSERTS



Martex® Basics Quilted Blanket

Features:

- 130 Thread Count Fabric
- 70% Polyester/30% Cotton
- EcoPure™ Polyester Fiberfill
- 6" Box Stitch with 1" Hem
- Easy Care, Machine Wash and Dry
- GSA Compliant

Available to:



| Martex® Basics Down Alternative | Size | Weight (oz) | SKU |
|---------------------------------|-----------|-------------|---------|
| Twin | 68 x 94" | 16 | 1B05910 |
| Full | 84 x 94" | 20 | 1B05909 |
| Queen | 92 x 94" | 22 | 1B05907 |
| King | 106 x 94" | 25 | 1B05908 |



EcoPure™ Quilted Blanket



Features:

- 240 Thread Count Fabric
- 100% Cotton Shell with EcoPure™ Fill
- 6" Sewn-Through Box Construction
- Filled with 100% Recycled Fiber
- Easy Care, Machine Wash and Dry
- Colored Hem Threads Indicate Size

Available to:



| EcoPure™ | Size | Weight (oz) | SKU |
|------------|-----------|-------------|---------|
| Twin | 66 x 90" | 14 | 5007633 |
| Full/Queen | 90 x 90" | 18 | 5007631 |
| King | 108 x 90" | 23 | 5007632 |

BLANKETS



Martex® Super Fleece Blanket

Features:

- Soft & Lofty Fleece Blanket
- 100% Polyester
- Single layer, 190gsm brushed fleece with anti-pill finish
- Self-hemmed with triple needle cover stitch four sides
- Colors: Ivory and Tan

Available to:



| Martex® Super Fleece | Size | Weight (oz) | Ivory | Tan |
|----------------------|-----------|-------------|---------|---------|
| Twin | 66 x 90" | 1.7 | 1B06138 | 1B06139 |
| Full | 80 x 90" | 2 | 1B06144 | 1B06145 |
| Queen | 90 x 90" | 2.2 | 1B06142 | 1B06143 |
| King | 108 x 90" | 2.7 | 1B06140 | 1B06141 |



Martex® Plush Blanket

Features:

- Soft & Lofty Plush Blanket
- 100% Microfiber polyester fibers for softness
- Single layer, 280gsm raschel knitted construction
- Self-hemmed on all four sides
- Colors: Ivory and Khaki

Available to:



| Martex® Plush | Size | Weight (oz) | Ivory | Khaki |
|---------------|-----------|-------------|---------|---------|
| Twin | 66 x 90" | 2.3 | 1B06279 | 1B06280 |
| Full | 80 x 90" | 2.9 | 1B06097 | 1B06098 |
| Queen | 90 x 90" | 3.2 | 1B06095 | 1B06096 |
| King | 108 x 90" | 4.1 | 1B06093 | 1B06094 |

* Products are recommended for BW and BW Plus

BLANKETS



Martex® Sovereign Cotton Blanket

Features:

- 100% Cotton Blanket
- Soft and breathable for year round comfort
- Distinctive Diagonal Weave
- Available in White and Natural

Available to:



| Martex® Sovereign | Size | Weight | White | Natural |
|-------------------|-----------|--------|---------|---------|
| Twin | 66 x 90" | 2.7 | 1B06159 | 1B06158 |
| Full | 80 x 90" | 3.2 | 1B06161 | 1B06160 |
| Queen | 90 x 90" | 3.6 | 1B06163 | 1B06162 |
| King | 108 x 90" | 4.4 | 1B06157 | 1B06156 |



Grand Patrician® Cotton Blanket

Features:

- 100% Cotton Blanket
- Soft and breathable for year round comfort
- Loom Woven Herringbone Weave
- Available in White and Natural

Available to:



| Grand Patrician® | Size | Weight (oz) | White | Natural |
|------------------|-----------|-------------|---------|---------|
| Twin | 66 x 90" | 2.8 | 1B06151 | 1B06148 |
| Full | 80 x 90" | 3.3 | 1B06152 | 1B06146 |
| Queen | 90 x 90" | 3.8 | 1B06153 | 1B06149 |
| King | 108 x 90" | 4.5 | 1B06150 | 1B06147 |

TOP OF BED ACCESSORIES



Martex® Suites Bedding Accessories

Features:

- 200 thread count dobby in a durable blend of 70% polyester and 30% cotton provides lasting comfort
- Elegant, Swiss Dot dobby pattern w/ Staybright® bleach-friendly, fade-resistant technology
- GSA Compliant

Available to:



| Martex® Suites | Size | | White | Desert Sage | Silver Mink |
|----------------|----------------|---------------|---------|-------------|-------------|
| Bedscarf | Queen Bedscarf | 74 x 24" | 1C88176 | 1C88836 | 1C97412 |
| | King Bedscarf | 92 x 24" | 1C88177 | 1C88838 | 1C88839 |
| Bedskirt | Queen Bedskirt | 60 x 80 x 15" | 1C97434 | 1C93755 | 1C93756 |
| | King Bedskirt | 78 x 80 x 15" | 1C97425 | 1C93746 | 1C93747 |
| Shams | Standard Sham | 20 x 26" | 1C97419 | 1C97420 | 1C97421 |
| | Queen Sham | 20 x 30" | 1C05354 | 1C05355 | 1C05356 |
| | King Sham | 20 x 36" | 1C88171 | 1C88817 | 1C88818 |
| | Euro Sham | 26 x 26" | 1C97416 | 1C88813 | 1C88814 |

TOP OF BED ACCESSORIES



Martex® T250 Millennium Duvets and Decorative Top Sheets

Features:

- 250 Thread Count sheet made with a Cotton Rich Blend
- 60% Cotton/ 40% Polyester
- Balanced, percale weave construction for lasting durability
- Duvets are constructed with hand guides for easy bedmaking
- Self-piping on three sides
- Lock-stitched hems to prevent unraveling and fraying
- Available in Solid and Stripe
- GSA Compliant

Available to:



| Martex® T250 Millennium | Size | | Solid | Stripe |
|-------------------------|-------------------|------------|---------|---------|
| Duvet Cover | Twin Duvet Cover | 70 x 94" | 1C13448 | 1C13456 |
| | Full Duvet Cover | 86 x 94" | 1C13449 | 1C13457 |
| | Queen Duvet Cover | 94 x 94" | 1C13450 | 1C13458 |
| | King Duvet Cover | 108 x 94" | 1C13447 | 1C13455 |
| Flat Top Sheet | Top Sheet | 66 x 109" | | 1A87845 |
| | Top Sheet | 84 x 109" | | 1A86494 |
| | Top Sheet | 84 x 119" | | 1A86495 |
| | Top Sheet | 92 x 109" | | 1A86500 |
| | Top Sheet | 92 x 119" | | 1A86501 |
| | Top Sheet | 110 x 109" | | 1A86891 |
| | Top Sheet | 110 x 119" | | 1A87319 |
| | Top Sheet | 98 x 114" | | 1A88328 |
| | Top Sheet | 118 x 114" | | 1A88331 |

TOP OF BED ACCESSORIES



Martex® Wovens Decorative Bedding

Features:

- 100% Polyester Fabric
- Heavyweight design-textured jacquard and matelasse fabrics are durable and have excellent pill-resistance
- Color coded labels to assist with size identification
- Available in Solid White with four different textures: Cityscape, Wavy Jac, and Basketweave

Available to:



Cityscape



Wavy Jac



Basketweave

| Martex® Wovens | | Size | Cityscape | Wavy Jac | Basketweave |
|--------------------|-------------------------------|------------|-----------|----------|-------------|
| Top Sheet | Full Top Sheet | 90 x 115" | 1A34046 | 1A34051 | 1A34058 |
| | Queen Top Sheet | 96 x 115" | 1A34048 | 1A34053 | 1A34060 |
| | King Top Sheet | 114 x 115" | 1A34047 | 1A34052 | 1A34059 |
| Shams | Queen Sham | 20 x 30" | 1C03847 | 1C03919 | 1C03939 |
| | King Sham | 20 x 36" | 1C03848 | 1C03920 | 1C03940 |
| Decorative Pillows | Square Pillow Cover w/ Insert | 18 x 18" | 1C03852 | 1C03924 | 1C03944 |
| | Square Pillow Cover w/ Insert | 12 x 24" | 1C03851 | 1C03923 | 1C03943 |

TOP OF BED ACCESSORIES



Martex® Prints Accessories

Features:

- 70% polyester and 30% cotton fabric blend
- Tailored, Center Pleat w/ Split Corners
- 15" drop
- Available patterns and colors in Jacobean Blue/Chocolate, Leaf Floral Wine/Gold, Leaf Floral Blue, Leaf Floral Green, Variegated Stripe Wine/Gold, and Variegated Stripe Lime
- GSA Compliant

Available to:



Jacobean Blue/
Chocolate



Leaf Floral Wine/
Gold



Leaf Floral Blue



Leaf Floral Green



Variegated Stripe
Wine/Gold



Variegated Stripe
Lime

| Martex® Prints Accessory Solutions | | | Jacobean | Leaf Floral | | | Variegated Stripe | |
|------------------------------------|-------------------------------|---------------|----------------|-------------|---------|---------|-------------------|---------|
| Product | Size | | Blue/Chocolate | Wine/Gold | Blue | Green | Wine/Spice | Lime |
| Shams | Queen Sham | 20 x 30" | 1C02125 | 1C02198 | 1C02196 | 1C02197 | 1C02060 | 1C02059 |
| Bedskirts | Full XL 15" Bedskirt | 60 x 80 x 15" | 1C02126 | 1C02201 | 1C02199 | 1C02200 | 1C02062 | 1C02061 |
| | Queen 15" Bedskirt | 78 x 80 x 15" | 1C02128 | 1C02207 | 1C02205 | 1C02206 | 1C02066 | 1C02065 |
| | King 15" Bedskirt | 54 x 80 x 15" | 1C02127 | 1C02204 | 1C02202 | 1C02203 | 1C02064 | 1C02063 |
| Bedscarfs | Full/Queen Bedscarf | 74 x 24" | 1C02123 | 1C02195 | 1C02190 | 1C02191 | 1C02056 | 1C02055 |
| | King 15" Bedskirt | 92 x 24" | 1C02124 | 1C02194 | 1C02192 | 1C02193 | 1C02058 | 1C02057 |
| Decorative Pillows | Square Pillow Cover w/ Insert | 18 x 18" | 1C02130 | 1C02213 | 1C02211 | 1C02212 | 1C02070 | 1C02069 |
| | Square Pillow Cover w/ Insert | 12 x 24" | 1C02129 | 1C02210 | 1C02208 | 1C02209 | 1C02068 | 1C02067 |

TOP OF BED ACCESSORIES



Martex®Rx Custom Design Bedding

Features:

- 70% Polyester, 30% Cotton
- Customize your Bed Component with 19 different fabric choices available in an assortment of fashion prints and solid colors
- Shams, bedskirts, bedscarves, boxspring wraps, decorative pillows
- GSA Compliant

Available to:



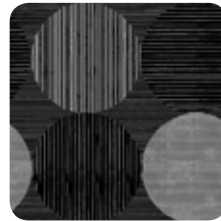
Bennet Green



Bennet Tan



Circles & Stripes Aqua



Circles & Stripes Black/Gray



Circles & Stripes Sapphire



Finley Blue



Finley Terra Cotta



Madeline Berry/Silver



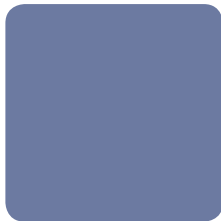
Madeline Gold



Oxidized Leaf Tan



Shells & Stripes Blue



Blue



Gold



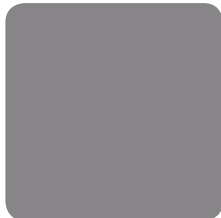
Green



Lime Green



Navy Blue



Silver



Tan



Chocolate

TOP OF BED ACCESSORIES

Martex®Rx Product Components and Sizes

| Martex®Rx | | |
|--------------------|----------------------------------|---------------|
| Product | Size | |
| BEDSKIRTS | Twin XL Bedskirt | 39 x 80 x 15" |
| | Full XL Bedskirt | 54 x 80 x 15" |
| | Queen Bedskirt | 60 x 80 x 15" |
| | King Bedskirt | 78 x 80 x 15" |
| BOX SPRING WRAPS | Twin XL Bedskirt | FITS 39 x 80" |
| | Full XL Bedskirt | FITS 54 x 80" |
| | Queen | FITS 60 x 80" |
| | King | FITS 78 x 80" |
| SHAMS | Standard Sham | 20 x 26" |
| | Queen Sham | 20 x 30" |
| | King Sham | 20 x 36" |
| BEDSCARF | Full/Queen Bedscarf | 74 x 24" |
| | King Bedscarf | 92 x 24" |
| DECORATIVE PILLOWS | Square Pillow Cover w/ Insert | 18 x 18" |
| | Breakfast Pillow Cover w/ Insert | 12 x 24" |

Scan the QR code to start custom designing your bed online!



martex | Rx

"Live Free"

BEDBUG BARRIER SYSTEMS

Prevention Prevent future bedbug outbreaks from occurring



Mattress Cover



Boxspring Wraps



Room Perimeter Kit



Furniture Kit

Emergency Immediately treat rooms to prevent further infestation



Emergency Response Kit

Accessories Add extra layers of protection to your system



KiltreX Powder



Kiltape



Cushion Liners



Dryer Sheets

- Effectively kills bedbugs
- Prevents new bedbugs from colonizing
- EPA exempt and GRAS certified

- Coverage is complete and discreet
- Organic and safe for human use
- Scalable to work on one room or your entire property

| Categories | Live Free Products | Size | SKU |
|--------------------|-------------------------|--------------|---------|
| Preventative | Standard Mattress Cover | 39 x 75" | 5012673 |
| | | 39 x 80" | 5012674 |
| | | 54 x 75" | 5012675 |
| | | 54 x 80" | 5012676 |
| | | 60 x 80" | 5012677 |
| | | 78 x 80" | 5012678 |
| | | 72 x 84" | 5012679 |
| | Deep Mattress Cover | 39 x 75" | 5012680 |
| | | 39 x 80" | 5012681 |
| | | 54 x 75" | 5012682 |
| | | 54 x 80" | 5012683 |
| | | 60 x 80" | 5012684 |
| | | 78 x 80" | 5012685 |
| | | 72 x 84" | 5012686 |
| | Boxspring Wraps | 39 x 75 x 9" | 5012666 |
| | | 39 x 80 x 9" | 5012667 |
| | | 54 x 75 x 9" | 5012668 |
| | | 54 x 80 x 9" | 5012669 |
| | | 60 x 80 x 9" | 5012670 |
| | | 78 x 80 x 9" | 5012671 |
| | | 72 x 84 x 9" | 5012672 |
| Room Perimeter Kit | | 5012688 | |
| Furniture Kit | | 5012689 | |

| Categories | Live Free Products | SKU |
|--------------------|------------------------|---------|
| Emergency Response | Emergency Response Kit | 5012687 |

| Categories | Live Free Products | Size | SKU |
|-------------|--------------------|----------|---------|
| Accessories | KiltreX Powder | | 5012656 |
| | Kiltape | | 5012658 |
| | | | 5012657 |
| | Cushion Liners | 18 x 18" | 5012660 |
| | | 22 x 22" | 5012664 |
| | Dryer Sheets | | 5012665 |

Visit WestPointHospitality.com for more information on Live Free and other innovative products.

