

NORTH FORK AT LAUGHLIN RANCH UNIT 1, TRACT 5151

Book 347
Map 32
4 OF 6

FINAL PLAT

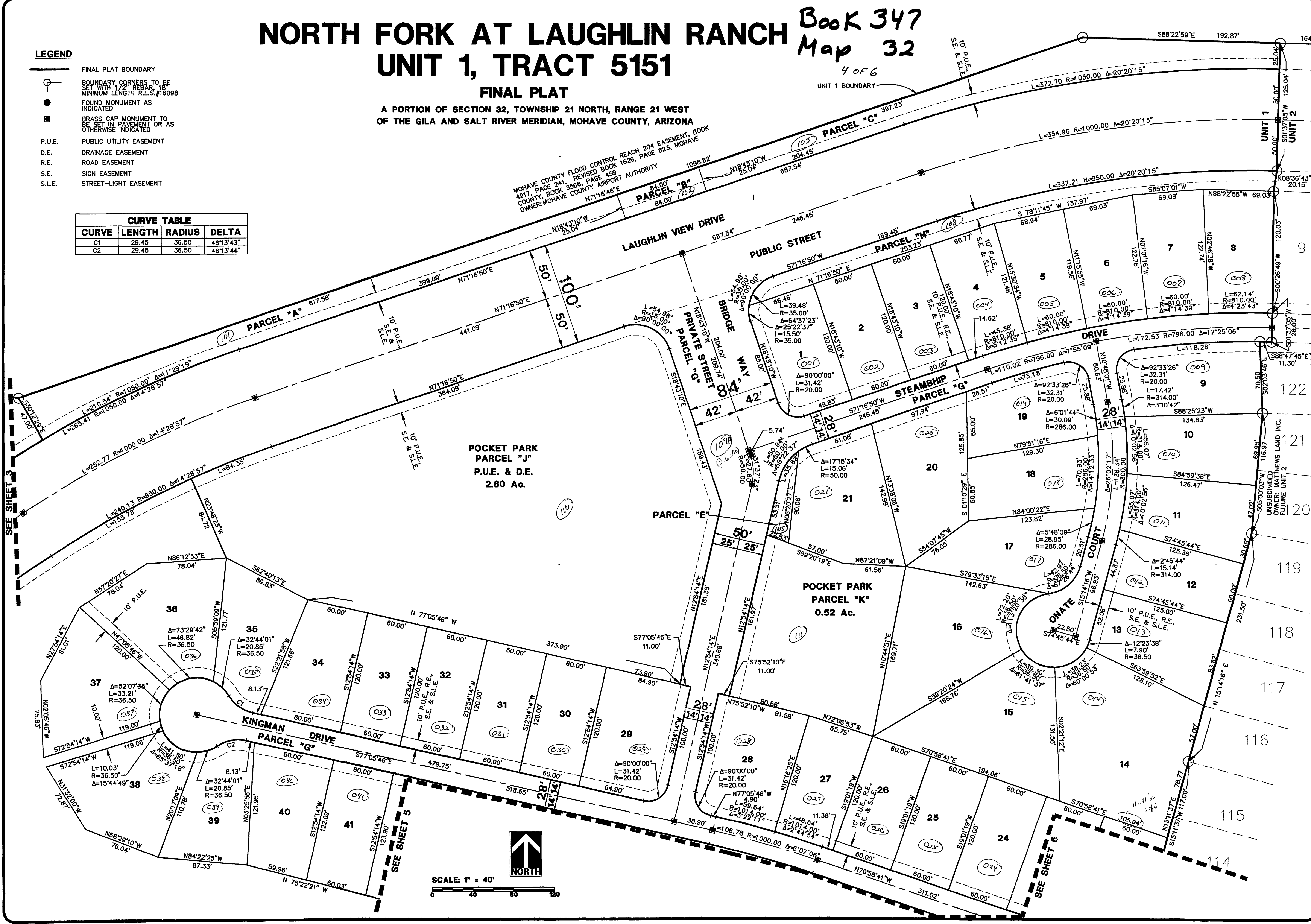
A PORTION OF SECTION 32, TOWNSHIP 21 NORTH, RANGE 21 WEST
OF THE GILA AND SALT RIVER MERIDIAN, MOHAVE COUNTY, ARIZONA

LEGEND

- FINAL PLAT BOUNDARY
- BOUNDARY CORNERS TO BE SET WITH 1/2" REBAR, 18" MINIMUM LENGTH R.L.S.#16098
- FOUND MONUMENT AS INDICATED
- BRASS CAP MONUMENT TO BE SET IN PAVEMENT OR AS OTHERWISE INDICATED
- P.U.E. PUBLIC UTILITY EASEMENT
- D.E. DRAINAGE EASEMENT
- R.E. ROAD EASEMENT
- S.E. SIGN EASEMENT
- S.L.E. STREET-LIGHT EASEMENT

CURVE TABLE			
CURVE	LENGTH	RADIUS	DELTA
C1	29.45	36.50	46°13'43"
C2	29.45	36.50	46°13'44"

MOHAVE COUNTY FLOOD CONTROL REACH 204 EASEMENT, BOOK 4917, PAGE 241, REVISED BOOK 1626, PAGE 823, MOHAVE COUNTY, BOOK 3566, PAGE 459
OWNER: MOHAVE COUNTY AIRPORT AUTHORITY



NORTH FORK AT LAUGHLIN RANCH UNIT 1, TRACT 5151

Anderson - Nelson, Inc.
Engineering - Surveying - Site Grading Plans - Subdivision Development - Hydrology
Construction Management - Computer Services

FINAL PLAT

DESIGNED	DRAWN	APPROVED	DATE
KAK	DNA		1-12-07



CALL TWO WORKING DAYS BEFORE YOU DO
1 800 STAKE-IT
1 800 782-5348
(OUTSIDE MARICOPA COUNTY)

4 SHEET OF 6
FILE BOX FF TUBE C9