

FINAL PLAT OF THE ENCLAVE AT DESERT FOOTHILLS ESTATES TRACT NO. 5136

A SUBDIVISION OF LOT 12 DESERT FOOTHILLS ESTATES TRACT 5011,
BEING A PART OF SECTION 5, TOWNSHIP 20 NORTH, RANGE 21 WEST,
OF THE GILA AND SALT RIVER BASE AND MERIDIAN,
MOHAVE COUNTY, ARIZONA

LEGEND

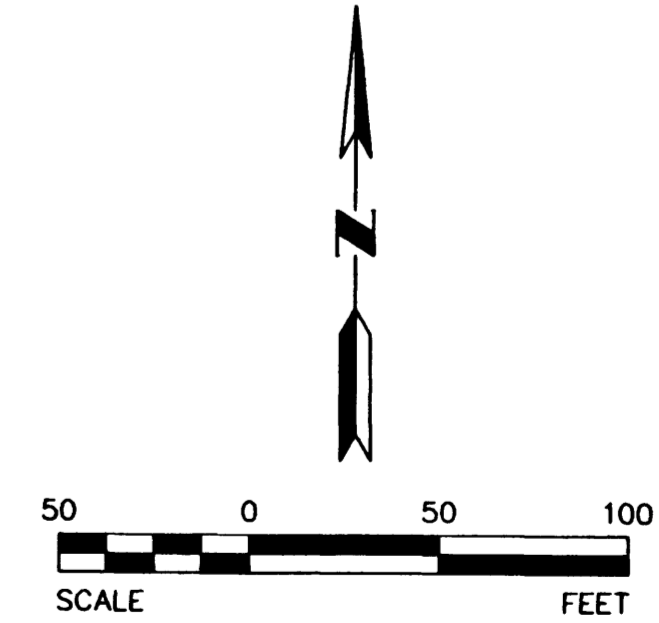
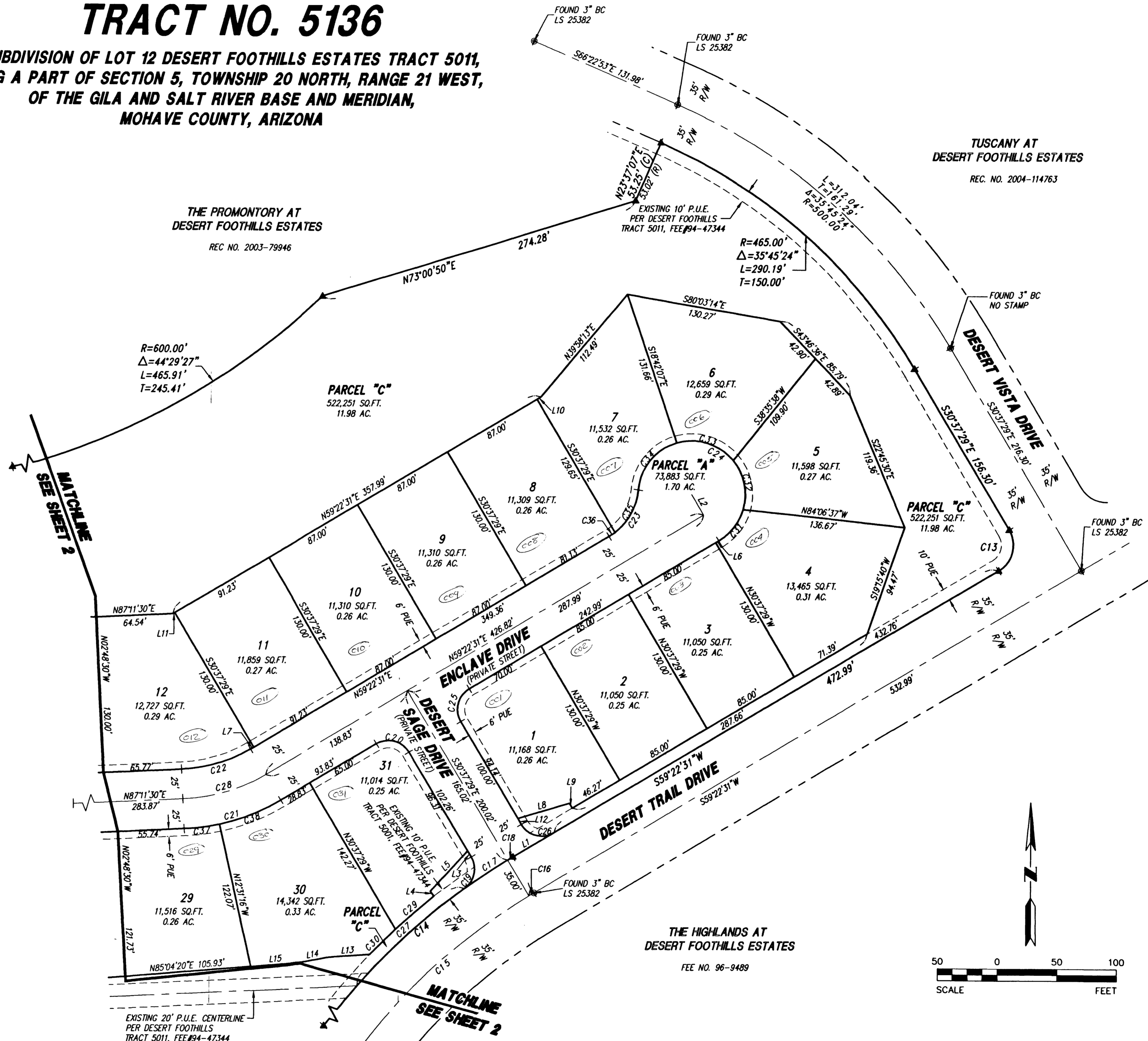
- SUBDIVISION BOUNDARY
- RIGHT OF WAY
- - - CENTERLINE
- - - EASEMENT LINE
- R/W RIGHT OF WAY
- PUE PUBLIC UTILITY EASEMENT
- WMAE VEHICULAR NON ACCESS EASEMENT
- ⊠ FOUND BRASS CAP IN HAND HOLE
- ⊙ FOUND BRASS CAP FLUSH
- ⊙ SET BRASS CAP (UPON COMPLETION OF PROJECT)
- | P.C., P.R.C., OR P.T.
- ▲ CORNER OF THIS SUBDIVISION, TO BE SET UPON COMPLETION OF CONSTRUCTION OR FOUND AS NOTED
- (R) RECORD INFORMATION PER FEE# 94-47344
- (C) CALCULATED INFORMATION
- (M) MEASURED INFORMATION

NOTE

ALL PROPERTY CORNERS WILL HAVE A 1/2" REBAR WITH CAP FROM A REGISTERED LAND SURVEYOR SET AT THE COMPLETION OF CONSTRUCTION

LINE	BEARING	DISTANCE
L1	S59°22'31"W	39.77'
L2	S30°37'29"E	20.00'
L3	S30°37'29"E	5.94'
L4	S37°48'30"E	4.88'
L5	S41°53'18"W	45.84'
L6	N59°22'31"E	2.99'
L7	S59°22'31"W	3.00'
L8	S73°51'03"W	45.16'
L9	N30°37'29"W	4.57'
L10	N59°22'31"E	4.00'
L11	N59°22'31"E	1.76'
L12	N30°37'29"W	5.86'
L13	S86°03'56"W	35.96'
L14	S79°08'19"W	22.60'
L15	S85°04'20"W	42.35'

CURVE	LENGTH	RADIUS	DELTA	TANGENT
C13	39.27'	25.00'	90°00'00"	25.00'
C14	316.96'	535.00'	33°56'40"	163.28'
C15	296.22'	500.00'	33°56'40"	163.28'
C16	5.00'	500.00'	0°34'23"	2.50'
C17	43.02'	535.00'	4°36'25"	21.52'
C18	5.00'	535.00'	0°32'08"	2.50'
C19	29.37'	20.00'	84°07'43"	18.05'
C20	31.42'	20.00'	90°00'00"	20.00'
C21	84.96'	175.00'	27°48'59"	43.33'
C22	60.69'	125.00'	27°48'59"	30.95'
C23	47.67'	50.00'	54°37'24"	25.82'
C24	184.27'	45.00'	234°37'24"	87.14'
C25	31.42'	20.00'	90°00'00"	20.00'
C26	31.19'	20.00'	89°20'44"	19.77'
C27	121.77'	535.00'	13°02'28"	61.15'
C28	72.82'	150.00'	27°48'59"	37.14'
C29	42.54'	545.00'	4°28'20"	21.28'
C30	30.46'	545.00'	31°27'07"	15.23'
C31	33.93'	45.00'	43°11'50"	17.82'
C32	43.66'	45.00'	55°35'34"	23.72'
C33	52.35'	45.00'	66°39'21"	29.59'
C34	54.33'	45.00'	69°10'40"	31.03'
C35	41.79'	50.00'	47°53'01"	22.20'
C36	5.88'	50.00'	6°44'23"	2.94'
C37	29.67'	175.00'	9°42'46"	14.87'
C38	55.29'	175.00'	18°06'13"	27.88'

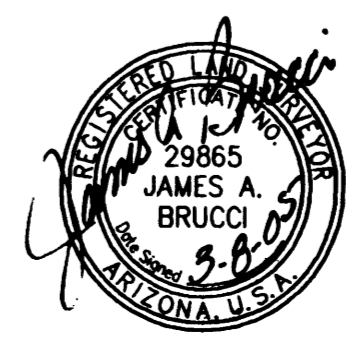


S.W. CORNER SEC. 5, T.20N., R.21W.
3 1/4" G.L.O. BRASS CAP

(BASIS OF BEARING) 1934.88(C)
N89°23'30"W 2644.39(R) 2644.33(M)

S. 1/4 CORNER SEC. 5, T.20N., R.21W.
3 1/4" G.L.O. BRASS CAP

709.45(C)



LANDMARK
ENGINEERING INC
3110 North 16th Street
Phoenix, Arizona 85020
Suite 285
602.861.2005

JOB NO. 04182
ACAD FILE 4182FP03
DATE 03/07/05
SHEET 3 OF 3