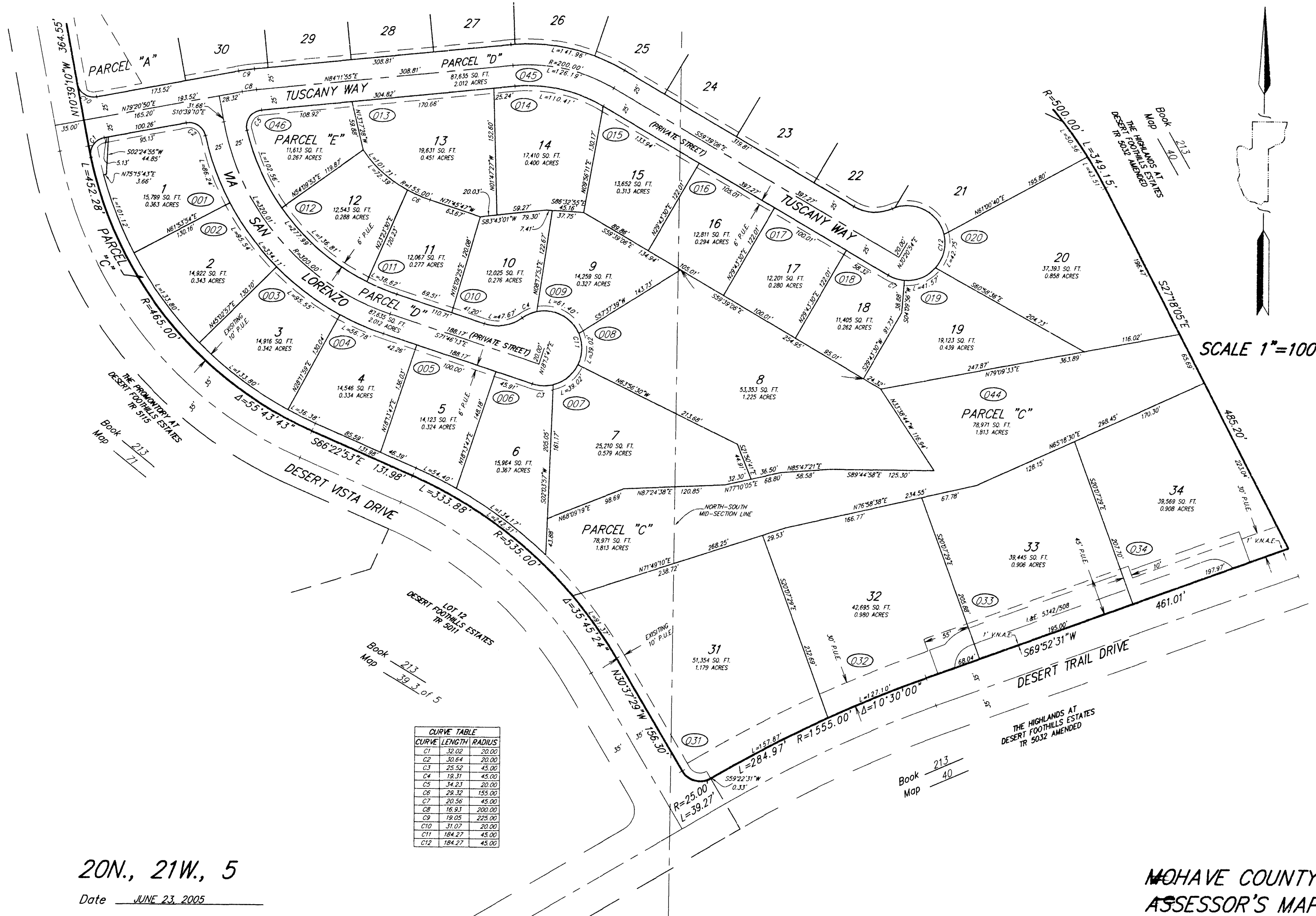


REC. DECEMBER 8, 2004

FEE NO. 2004-114763

Map 2 of 2



SCALE 1"=100'

CURVE	LENGTH	RADIUS
C1	32.02	20.00
C2	30.64	20.00
C3	25.52	45.00
C4	19.31	45.00
C5	34.23	20.00
C6	29.32	155.00
C7	20.56	45.00
C8	16.93	200.00
C9	19.05	225.00
C10	31.07	20.00
C11	184.27	45.00
C12	184.27	45.00

20N., 21W., 5

Date JUNE 23, 2005

MOHAVE COUNTY
ASSESSOR'S MAP

Book 213
Map 71

Book 213
Map 39_3 of 5

Book 213
Map 40

Book 213
Map 40

THE HIGHLANDS AT
DESERT FOOTHILLS ESTATES
TR 5032 AMENDED

THE HIGHLANDS AT
DESERT FOOTHILLS ESTATES
TR 5125

LOT 12
DESERT FOOTHILLS ESTATES
TR 5011