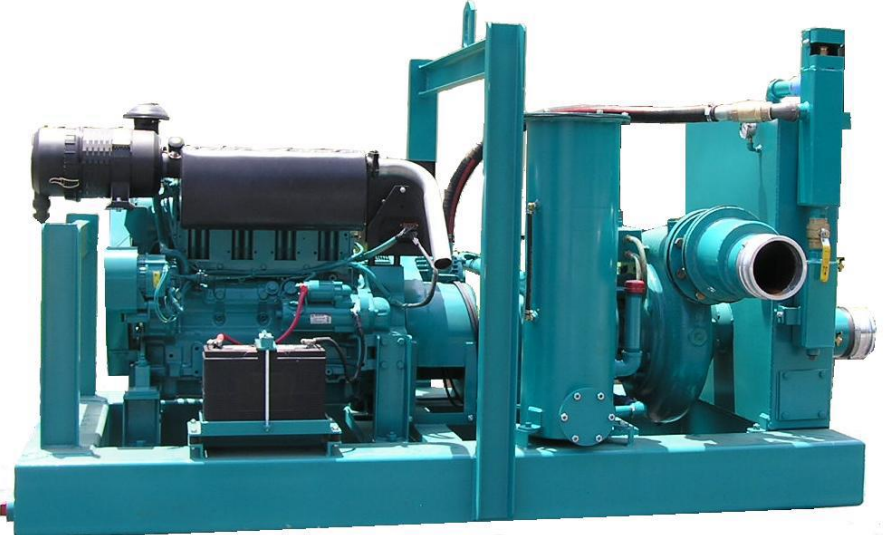
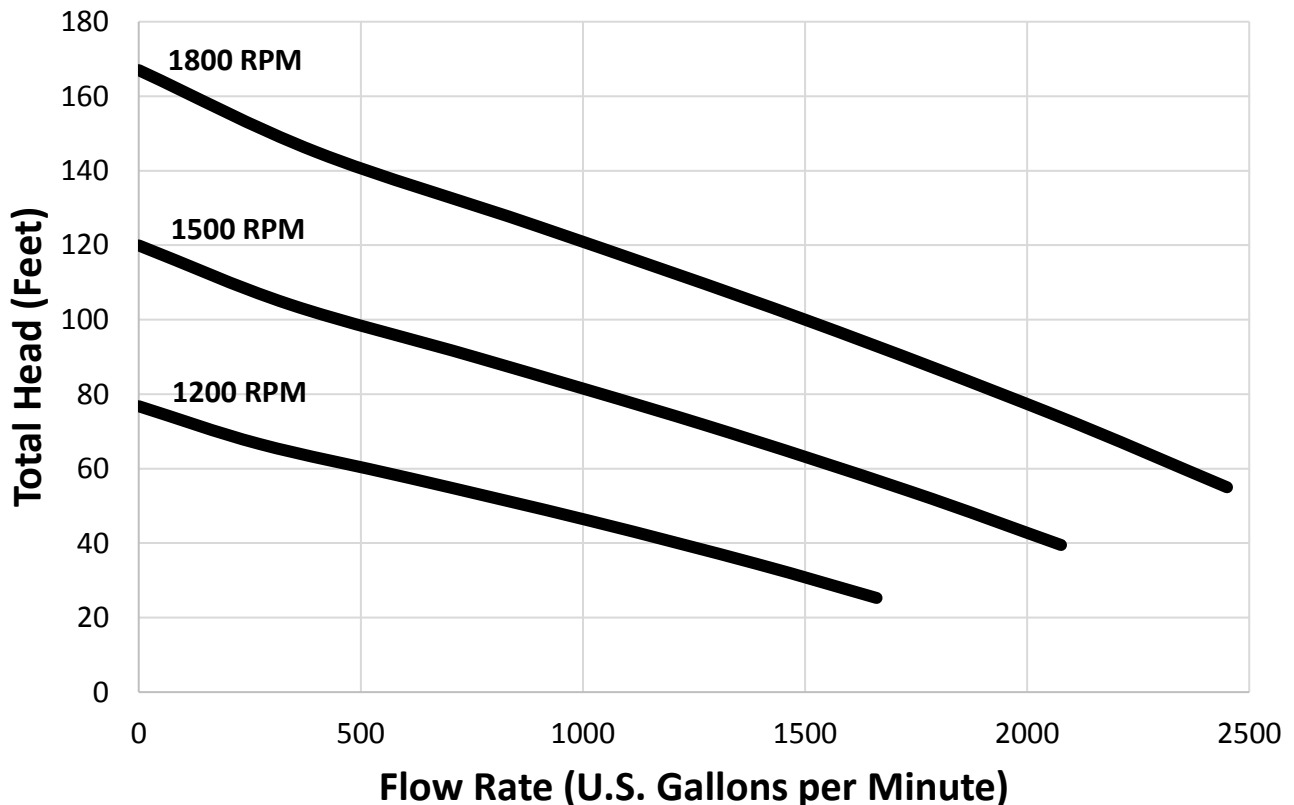


AutoPrime™ By-Pass Pump 6 inch discharge, 6 or 8 inch suction

The Complete Vacuum Assisted By-Pass Pump is our most versatile pump ever. The By-Pass pump is ideally suited for sewer bypass operations, open sumping of flood areas, basins, ponds, excavations, and wellpoint dewatering with its high capacity vacuum pump. Features include solids handling to 3", high suction lift capabilities, 24 hours operating time fuel cell, run-dry seal, and optional auto start/stop control panel. Specify 6" or 8" suction when ordering.



CDPW AutoPrime™ 6"x6" or 8"x6" Bypass Pump



“The finest dewatering pumps and wellpoint equipment since 1923”

Complete Dewatering 6VABP-Dz4-C3-F(W) 6" AutoPrime™ Vacuum Assisted By-Pass pump



SPECIFICATIONS

(All specifications subject to change without notice)

Pump Component

Make: Complete Dewatering
 Model: 6CBP, 6" end suction centrifugal,
 long coupled
 Casing: Cast Iron
 Impeller: Semi-open 12.0", 2-vane, CI
 Seal: Tungsten carbide / Viton
 Seal lubrication: Oil lubricated, run-dry
 Coupling: Long coupled, doughnut type
 elastomeric element
 Suction, Discharge: 6" x 6" or 8" x 6" nominal straight
 pipe, cam-lock or Bauer fittings optional

Performance:

Pumping Capacity: to 2400 gpm (9085 l/m)
 Head Capacity: to 167' (50.9 m)
 Suction Lift: to 24' (7.3 m)
 Solids Capacity: to 3" spherical (7.62 cm)

Diesel Engine

Make / Model: Deutz D914L04
 Type: 4-cylinder air cooled diesel,
 naturally aspirated
 Horsepower: 59 hp continuous at 1800 rpm
 Control Panel: Murphy control panel with engine
 temp, oil pressure, voltage, tachometer, hour
 meter gauges; safety shutdowns on critical engine
 conditions.
 Fuel Filters: Dual fuel filter system with
 fuel/water separator

Vacuum System

Vacuum Pump: Complete C3 rotary vane, air
 cooled, oil lubricated
 Air Handling: 68 cfm
 (alternate; C5 vacuum pump 130 cfm)
 Lubrication: Single point oiler w/ closed loop
 vacuum pump oil recovery system
 Cooling: Air and oil cooled; vacuum pump
 is air cooled, vacuum oil is also cooled via a closed
 loop oil recovery system w/ heat exchanger
 Oil capacity: 20 quarts, SAE 30 non-detergent
 Vacuum system: Suction priming constant vacuum
 system with a large steel air/water separation tank,
 stainless steel peeler valve float mechanism,
 manifold trap moisture capture system, vacuum oil
 recovery tank w/ stainless steel vacuum oil demist
 element.

Frame

Type: Integral fuel cell / frame,
 welded steel construction
 Material: 8" x ¼" steel box tube, welded
 and pressure tested
 Fuel Capacity: 62 gallons (235 liters);
 approx. 24 hours run time between refueling. Can
 also be used with an auxiliary fuel tank.
 Clean out ports: (4), one on each corner
 Fuel filler: 4" filler neck with lockable
 cap, sediment screen
 Battery hold-down: External, lockable bar
 Lifting bale: Single point, balanced
 Paint: All components are cleaned,
 then primed with an epoxy primer. Components are
 then painted with an industrial grade enamel.
 Custom colors are available.

Wheel Mount Option

Axle: Single axle, 6000# rated
 Torflex torsion axle.
 Tires: 225/75/R15, Highway rated,
 load range D
 Fenders: Steel diamond plate
 Tow Hitch: To match your towing vehicle
 (ball, pintel, lunette eye) with safety chains
 Leveling: Drop down posts on all
 corners of the pump, front wind-down jack stand
 Brakes (optional): Hydraulic surge or electric
 with battery backup and charger

Dimensions

Frame Mount: Length 8.3' (100", 254 cm)
 Width 4' (50", 127 cm)
 Height 5.5' (66", 168 cm)
 Weight 4000 lbs. (1820 kg)
 Wheel Mount: Length 13.0' (156", 396 cm)
 Width 7.5' (90", 225 cm)
 Height 6.5' (78", 195 cm)
 Weight 4500 lbs. (2050 kg)

Warranty

CDPW Inc. warranties the entire unit for one year parts and
 labor against defects in product or workmanship. Engine
 warranties are carried by the manufacturer and may exceed
 one year.