

**DOCKING CHURCH OF ENGLAND
PRIMARY SCHOOL
&
NURSERY**



**CHEQUERS STREET
DOCKING
KING'S LYNN
NORFOLK PE31 8LH**

**Tel: 01485 518344
Email: office@docking.norfolk.sch.uk**

PART OF THE ST MARY FEDERATION

ACTING HEADTEACHER:

Mrs Christine Holden

CHAIR OF GOVERNORS:

**Mr. John Ward
Wychwood
Heacham Road
Sedgeford
King's Lynn
Norfolk**

The information contained in this brochure is correct at the time of writing but subject to alterations as circumstances change.



TABLE OF CONTENTS

	<u>Page</u>
Table of Contents.....	2
Docking Primary School & Nursery	3
The School Premises.....	3
The School's Mission, Values and Aims.....	6
Admission to School.....	7
The School day.....	7
Absences from School.....	8
Pupils' Welfare.....	9
School Meals.....	11
The Curriculum.....	13
School Discipline.....	17
Complaints (Curriculum)	17
Charges for School Activities.....	17
The Home-School Relationship.....	19
Helping your child prepare for school.....	20
School Uniform.	22
Transfer to High School.....	23
Disability Equality Policy.....	24
Appendix A - The School Staff and Board of Governors.....	25
Appendix B - Governors' Approved Policies.....	26
Appendix C - The Governing Body.....	28
Appendix D - Term Dates.....	29
Appendix E - In-school testing information	30
Appendix F - National Curriculum Test Results	31

DOCKING PRIMARY SCHOOL & NURSERY



Docking School is a small rural primary with a Nursery. Visitors to the school often comment on the warm and welcoming reception they receive from children and staff. Prospective parents and children are encouraged to visit our school to experience this friendly atmosphere.

Docking is a co-educational Church of England Foundation means that the governors own part of the school and are fully responsible for all aspects of

running our school.

Being a Church of England School means also that some of the governing body are appointed by the local church or by the Norwich Diocese. There are close connections with Docking Church and the children take part in services usually at Christmas, Easter and Harvest Festival.

All policies formulated and approved by the Governing Body are available for inspection on request. A list of policies and governors is given in Appendix B and Appendix C. These policies are currently under review.

Docking Primary School and Nursery are federated with Brancaster Primary School and Sedgeford School.

THE SCHOOL PREMISES

The main school building dates back to 1861, with subsequent additions and modernisation. Apart from one double and two single classrooms, there is also an IT area and workroom which is used for teaching groups of children. The purpose built, well equipped nursery classroom provides the perfect introduction to school life. It is linked to the pre-school, Docking Daycare. The new Reception class is also linked to the Early Years area. It is self-contained yet integrated within the main school with its own playground and timetable to suit the younger child.



The school hall is used for PE, collective worship and lunch as well as providing out of school community activities. We also have a Reception Class, second floor library and quiet meeting room.

There is a large playground, a raised bed garden area and our wonderful "Field of Dreams" for outdoor learning experiences. The village playing field is used for sports activities.



Docking Community Sports Hall



The School Library.



Our Field of Dreams



The Big Friendly Giant's Chair - in memory of a former pupil

THE SCHOOL'S VISION, VALUES AND AIMS

"Aspire and Grow"

Within the Anglican ethos of the Church of England Foundation, our school aims to:

- Provide a broad, balanced, high quality education including a wide range of experiences and opportunities, enabling children to achieve their maximum potential in all areas of the curriculum, ensuring opportunities for all to succeed;
- Create a happy, healthy, secure and stimulating environment to help children develop their own personalities, confidence, independence and curiosity to learn;
- Promote high aspirations, nurture ambition and generate motivation for life-long learning, embracing the wider world;
- Cater for the needs of all pupils regardless of ability, race or culture and for everyone to share in the moral and spiritual life of the school;
- Encourage children to develop responsibility, independence, self-esteem, and a set of personal values to equip them for future challenges;
- Warmly welcome parents and treat them as partners;
- Value every member of the Community, showing mutual respect and tolerance of the needs and feelings of others.

September 2014

ADMISSION TO SCHOOL

Boys and girls will be admitted to the School Nursery at the age of 3+ without reference to ability or aptitude. Children will be admitted part time in the term before the one in which they reach the age of 4, reception age children are full time from September. (The dates of term for the coming year are given in Appendix D.)



THE SCHOOL DAY

8.45 a.m. - School opens	12.00 noon - Lunch
8.55 a.m. - School Day Starts	1.00 p.m. - Collective Worship
10.20-10.40am - Morning Break	3.15 p.m. - School day ends

Collective Worship

We recognise the need to help children develop qualities of understanding, tolerance, empathy and responsibility. Collective worship offers focused opportunities for such development while reinforcing a sense of belonging to the school and Christian family. In our school we are concerned in setting apart a time of each day when children may come together as a whole school and share a special experience which may be reflective, contemplative or spiritual in nature. We believe it is important that at these times children are entitled to a quiet, calm and reverent atmosphere.

The school's aims for Collective Worship are:

- To help children be aware of themselves and relationships with others.
- To encourage reflection on important issues or those issues which have particular relevance to the children.
- To familiarise the children with teaching of the Bible.
- To worship and praise God.
- To promote a sense of respect and reverence.

Parents do have a right to withdraw their children from Collective Worship.

On Fridays we celebrate the week's achievements. Individual team points and 'Golden Ticket' Certificates are presented and children are encouraged to share

good work. We have three teams, Red Foxes, Blue Bats and Green Hedgehogs, with democratically voted captains from Year 6. A cup is presented each week to the team who have gained the most points. Children are awarded points for academic and sporting achievements, good behaviour and for being kind.

At present there are five classes:-

- **Curlews - Nursery and Reception**
- **Kingfishers - Year 1 and Year 2**
- **Inca-Jays - Year 2 and Year 3**
- **Nightingales -Year 4 and Year 5**
- **Golden Eagles - Year 5 and Year 6**

ABSENCES FROM SCHOOL



Please inform the school with a note or telephone call if your child is absent. If your child will be absent due to a family holiday, please advise the school. It is cluster policy not to authorise school holidays unless there are exceptional circumstances. Unauthorised periods of 10 consecutive sessions may result in the issuing of a fixed penalty. Please see our Cluster Attendance Policy. Please do not take family holidays during exam (SATs) week - usually 2nd or 3rd week in ..

If your child is unable to partake in games, PE or swimming, a note is also required.

Unauthorised Absence

By law, the school must record as unauthorised any absence for which an explanation is not received. Children could be registered as an unauthorised absence if they are late for school without justification.

PUPILS' WELFARE

Safeguarding

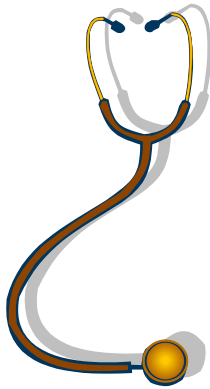
Safeguarding children means keeping them safe and protected from harm at all times. Docking Primary School and Nursery is committed to safeguarding and actively promoting the welfare of all children. All staff and volunteers share this commitment. We have established, and will maintain, an ethos whereby our pupils feel secure and able to talk freely to any member of staff or regular visitor about their concerns and worries.

The staff and regular visitors are able, through training and induction, to recognise when a disclosure requires action and know which authorities need to be informed. They will make sure the child knows that they may have to share what they have been told with other people who can help but confidentiality will be maintained.

Any concern for a child's safety or welfare will be recorded in writing and given to the Senior Designated Safeguarding Person, Mrs Holden or the Alternate, Sarah Di-Bella. It is our legal duty to assist colleagues in other agencies with child protection issues. If a referral is made, we will inform parents. A copy of the school's child protection/safeguarding policy is available on request from the school office.

Our Governing Body ensures our recruitment practices are safe and compliant with statutory requirements. All staff and regular volunteers and visitors are required to complete DBS checks and when appointing new members of staff, the application process, including interview and references will assess the suitability of the candidates to work with children along with their capacity to fulfil this core responsibility to safeguard children.

Health and safety of our pupils is a high priority at Docking School. We ensure that the children feel safe and secure on the school site and are encouraged to become involved in the day to day running of the school through circle time activities and the school council. The school nursing service is available to all children. All children have their eyesight and hearing tested in the first year of school. Health education is included in the curriculum as part of PSHE. We have a 4-day trained first aider and other staff are 1-day trained first aiders.



Illness in school

We do our best to make any child, who is unwell, comfortable in school. Where we think it necessary, parents will be contacted and asked to take the child home. Please supply us with an alternative daytime telephone number for emergency use. It is important to update mobile telephone numbers.

Medicines

Children in need of medication should generally not be in school. However, when recommended by their doctor, children may attend school. Any medication must be brought in by a parent and should be clearly marked with the child's name and contain the dosage for one day only. Responsibility for administering medication remains with the parents. If written instructions and a completed consent form accompany medicines, children's medicines may be administered during the school day (by a member of staff).



SCHOOL MEALS



School meals are provided by Norse Commercial Services working in partnership with the "5-a-day" Campaign and Assured Food Standards.

Money is collected on Monday mornings for meals during the week. Dinner money should be brought to school in a named purse. Cheques should be made payable to Docking Primary School.

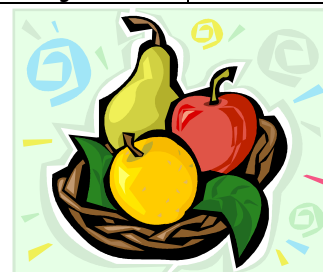
Any family in receipt of Family Income Support may apply for free school meals. Please ask in the school office for a form. Children may bring a healthy packed lunch if preferred. The school follows the 'Universal Meals' scheme whereby all children in reception, year 1 and year 2 are offered free hot school meals.

Below is a sample menu

	MONDAY	TUESDAY	WEDNESDAY	THURSDAY	FRIDAY
Week 1	Spaghetti Bolognese With Cheese Garlic & Parsley Slice Sweet corn Not Naughty but nice Muffin	Roast chicken, stuffing & gravy, Mashed Potatoes, carrots, peas Yoghurt	Spicy Sausage & Bean Casserole Savoury Rice Green Beans Mandarin & Peach Crunch with custard	Turkey Breast Steak, stuffing & gravy Roast Potatoes Carrot & Swede Shredded Cabbage Orangy'Tang Dream	Tuna & Haddock Fish Fingers Chipped Potatoes Peas Sachet of sauce Oat Cookie with Milk Drink
Week 2	Wholemeal Cheese & Tomato Pizza Pasta Salad Baked Beans Frozen Peach yoghurt	Cottage Pie & Gravy Mashed Potato Peas Carrots Fruit Cocktail with Fromage Frais	Baked sausages, Yorkshire Pudding & Gravy Diced Potatoes Broccoli Sweet corn Rice Pudding, Jam	Pork Loin Steak, Apple Sauce & Gravy Roast Potatoes, Green Beans, Cauliflower Fruit Chunk Muffin with Milk Drink	Salmon Fingers Chipped Potatoes Peas Sachet of Sauce Chocolate pudding with Chocolate Sauce
Week 3	Lasagne Garlic & Parsley Slice Peas Fruity Krackolet	Turkey Casserole Mashed Potato Sweet, Carrots, Green Beans Chocolate Semolina with Pears	Baked sausages Half Jacket Potato Sweet corn Baked Beans Steamed Blackcap Sponge with Custard	Roast beef, Yorkshire Pudding, & Gravy Roast Potatoes, Broccoli, Carrots Yoghurt	Fish Crunchy Chipped Potatoes Peas Sachet of Sauce Muesli Bar With Milk Drink

Children in the Curlews Class and Kingfishers Classes are eligible to receive free fruit and vegetables as part of the Governments 'School Fruit and Vegetable Scheme'.

Children may buy assorted fruit at break times. Chocolate and sweets are not allowed in school.







THE CURRICULUM

The education offered is within the framework of the New National Curriculum. The school has a thematic approach within the curriculum and details of the topics are shown on the school website.

Detailed records of each child's progress are kept within the school. In addition to this, all children are assessed on entry to the school. The school is also required to administer the phonics screening tests at the end of year 1 (age 6), the National Curriculum Tests (known as SATS) at Key Stage 1 (age 7) and Key Stage 2 (age 11). The comparative results of the last year's SATS are given in Appendix G. July 2015 will be the last time these tests will take place in their current format.

Each child's potential is carefully monitored and children's specific needs are provided for with a termly target sheet based on the criteria of the new curriculum. These criteria are based on the Assertive Mentoring scheme adopted by the school. Children at stages 3 of 4 of the special educational needs register will also have an Individual Education Plan (IEP). All children's progress is regularly monitored through Pupil Progress Meetings. Every effort is made to fulfil children's individual needs whether they are of above average ability, a slower learner or have behavioural problems.

Curriculum Delivery

The children will be split into 5 classes, Nursery and reception class (Curlews), Year 1/2 (Kingfishers), Year 2/3 (Inca-Jays), Year 4/5 (Nightingales) and Year 5/6 (Golden Eagles). It is common practice in small schools to have mixed aged classes and these work particularly well at Docking School. The curriculum for all subjects is delivered through class teaching, group teaching and on an individual basis. Provision is made for staff expertise in P. E., Art, French and Music to be used throughout the school.



Maths

Maths is taught daily throughout the school. Each lesson begins with a mental or oral starter followed by the main teaching activity and then independent group work. The children are grouped by ability.

English

The English curriculum is delivered in line with the requirements of the New National Curriculum. The daily English lesson has an emphasis on teaching phonics. A structured approach is used throughout the school to teach spelling, punctuation, handwriting and grammar. Wide selections of texts are used as a stimulus for different types of writing. The teaching of reading is supplemented by the use of various reading schemes and children are encouraged to take books home. During their time at school, there will be opportunities for all children to participate in poetry and drama activities. Reading is supported through a range of media including kindles.



Science

Science is taught in a structured sequential way so that scientific skills, knowledge and understanding can be developed through investigations from year group to year group.



Information Communications Technology (I.C.T.)

Pupils are taught how to store and retrieve information, access the Internet, use various software programs to access information and compose text on screen.

Every classroom has been installed with an Interactive Whiteboard.

Special Educational Needs (SEN)

The SEN policy is written in the light of new government legislation and based on the DfEE Code of Practice on the Identification and Assessment of Special Needs. The SEN co-ordinator is Mrs Golding. The full policy is available for inspection on request. The school is currently developing applications for the new Education, Health and Care Plans.

Religious Education

Although a Church of England Foundation, the school teaches religious education non-denominationally and using the Norfolk Agreed syllabus. Parents have a right to withdraw their children from this provision, if they so wish. The full RE policy is available for inspection on request.

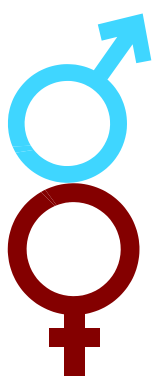


A Hindu Gujarati Gate (hand embroidered by the bride in preparation for her wedding)



Collective Worship

Collective Worship occurs each day in school, but may take different guises. Monday's collective worship is led by Reverend Peter Cook who will introduce the theme for the week that subsequent acts will support and reflect upon. This act is Christian based. Any parent has the right to withdraw their child.



Sex Education

As part of National Curriculum, the school teaches aspects of sex education at various stages throughout the school. Sex education, as a specific topic, is taught in the upper key stage 2 class. Parents have a right to withdraw their children from this provision, if they so wish

Sports

The children are encouraged to be outgoing and we regularly take part in inter-school events organised by the Smithdon Cluster School Sports Partnership. Sporting activities include football tournaments, netball matches, Kwik Cricket, hockey, golf, off-road cycling, cross-country events and swimming galas. The school sends a team to the annual North West Norfolk Area Sports event which is held at Smithdon High School.

On a regular basis there is a range of sports clubs available after school. Children in key stage 1 and 2 swim during the Autumn and Summer Terms at Smithdon High School Swimming Pool. Over the past few years every Year 6 child has left school being able to swim proficiently. We currently have a number of very successful sports performing competing at county and regional level.



Football Team



Netball Teams

The school attends the Primary Schools annual country dance party. There is currently an opportunity for children to learn the flute in year 4 with a tutor from the County Music Service although there is a charge for this.

SCHOOL DISCIPLINE

The school fosters the development of positive attitudes towards work and relationships between pupils. Discipline is administered within the framework of the governors' approved policy. The full policy is available on request.

COMPLAINTS (CURRICULUM)

The school operates a complaints procedure to deal with any matters relating to the curriculum taught in the school. In the first instance a formal complaint has to be made in writing to the Headteacher. The details of the complaints procedure will be provided to any parent on request. In the event of a complaint about the Headteacher, please write to the Chair of Governors.

CHARGES FOR SCHOOL ACTIVITIES

The policy of the governors is not to charge for any school activity that is part of the formal curriculum.

However, on suitable occasions, we do invite parents to make a voluntary contribution towards the cost of an activity which is additional to the formal curriculum but enriches the child's educational experience. The making of a contribution for such activities is not a condition of the child's taking part. Of

course, if unsufficient donations are received from parents the activity may not take place.

From time to time, there are also opportunities for children to participate in extra-curricular activities (e.g. music lessons) for which there may be a charge. Parents will be informed by letter of such opportunities and the costs involved, and can choose whether or not they wish their child to participate.

Certain school clubs will carry a charge to cover the costs of staffing and resources.



THE HOME-SCHOOL RELATIONSHIP

There is a warm and informal liaison between parents and staff at Docking School. We encourage and welcome parents into school to discuss openly any aspects of their children's education and welfare which may have a bearing on their school life. However, if any parent wishes to speak in confidence, a mutually convenient time can easily be arranged.

This school is committed to promoting the health and welfare of all pupils. We are required by law to follow procedures laid down by the Norfolk Area Child Protection Committee if we see signs which suggest that one of our pupils may have been a victim of abuse. Use of the procedures in this way is an obligation placed on the school by legislation and in no way infers that any parent/carer is being accused of wrong doing.

The Headteacher is available at any mutually convenient time to discuss problems relating to any individual in the school with the parent or carer.

Two 'parents' and carers" evenings are held every year at which parents may discuss their child's progress with their teacher and to see their child's work. A written report is issued in the Summer Term for Early Years, KS1 and KS2.



We welcome parents into our classrooms to help with reading activities, artwork, computer studies and games. Parents may require current DBS certificates.



HELPING YOUR CHILD PREPARE FOR SCHOOL

Sometimes it is thought that a child's education begins when it enters school, but this is not so, for education starts at birth. If we as parents can provide a variety of interests, stimulating materials and the opportunity to experiment, we can help sow the seeds for our children's future development.



- Talk to your child about the things they use and see and the people they see around them. Discuss arrangements for cooking, shopping and holiday trips.
- Encourage children to express themselves clearly and confidently.
- Read to your child frequently and encourage them to look at books.

It is important that they experiment and develop manual dexterity whilst playing. Encourage painting, drawing and cutting out pictures, as these are all activities which stimulate conversation and increase confidence. **Play is children's work!**

Listening is a skill which has to be acquired and greatly helps concentration which is essential to many forms of learning. Knowing colours also helps children before they start school.

By playing games, such as Ludo and Snakes and Ladders, you can introduce your child to counting. Don't force them to do sums, but by counting the stairs as you walk down them or by counting the number of spoons in the table, you can instil an awareness of numbers.



Above all, make each experience enjoyable and don't worry if your child doesn't respond as you had hoped. All children are individuals and develop at their own pace. *'If they enjoy it - do it!'* is a good policy and then school will be an exciting, stimulating experience for them when the time comes. Ensure your child meets and plays with other children so they develop social relationships and the ability to share things with others.

It is helpful if all children, coming new to school, can do the following things:

1. Remove outdoor clothing and hang them neatly on a peg,
2. Undress and dress themselves for PE,
3. Use the toilet properly,
4. Blow their noses properly,
5. Wash and dry their hands,
6. Tidy up after using toys, books or apparatus,
7. Use a knife and fork,
8. Tie their shoelaces.

Each year, a special meeting is held for parents of children starting school. The reception teacher, Headteacher and interested parties talk about the school and the class. Parents are welcome to ask questions. This is a good opportunity for everyone to get to know each other.

Prior to starting school, children come in on arranged days for a few hours. Their experiences include assembly, class room activities, the playground and dinner time. This is an invaluable introduction to starting school.

Playground fun



Living Willow



SCHOOL UNIFORM



It is expected that all children wear school uniform. Please ensure each item of clothing is clearly marked with the owner's full name. All school uniform is ordered direct from the school.

A School Uniform Order Form is available from the school office.

Uniform can also be purchased through the 'Tesco Uniform Service'. Further details can be obtained through the school office.

Book bags and PE kit bags are also available from the school office.



Boys:

Navy blue sweatshirt with the school logo purchased through school or Tesco

Pale blue polo shirt with optional school logo

Plain dark grey trousers,

Flat, dark coloured shoes, preferably black,

Sober coloured socks.

Girls:

Navy blue sweatshirt with the school logo purchased through school or Tesco

Pale blue polo shirt with optional school logo

A navy-blue flared or pleated skirt or navy-blue pinafore dress,

Navy-blue or white socks,

Flat, dark coloured shoes, preferably black,

Blue gingham dress (summer).



PE Kit

Navy blue shorts or Netball skirt and knickers
Plimsolls
Outdoor trainers
White tee-shirt
Football boots and shin pads
Swimming costumes (inc hat)
Navy blue tracksuit for outdoor wear

Haircuts should be sensible and styles that make a statement and stand out from the convention should be avoided during term time.

Long hair should be tied back as a health and safety precaution.

Jewellery is not acceptable, with the exception of those children with pierced ears, in which case studs only may be worn. For ear-rings that cannot be removed, the children are asked to provide tape and cover them. Staff will not accept responsibility for covering them for your child.

Any item of jewellery that is considered to be a risk (including watches) should be removed for PE because there is a risk of injury during play.

Children who do not meet these safety standards will have to miss PE so that we can ensure their safety for which we are responsible.

We work hard to value each child equally and treat them equally so we ask them to wear a uniform so they all feel like they belong equally.

TRANSFER TO HIGH SCHOOL

Children transfer to High School at the age of eleven. The catchment area for Docking School is Smithdon High School, Hunstanton. A full induction programme is in place at the end of the summer term in year 6 and both parents and children are encouraged to visit the school regularly.

DISABILITY EQUALITY SCHEME (DES)

The Disability Equality Scheme brings together the school's approach for promoting equality in our policies and procedures and, most importantly in our day-to-day practices and interactions with the whole School community.

Our scheme includes pupils, staff, governors, parents, carers and all those within our extended School community.

We acknowledge that it is very important for us all to work together in achieving our aim of being fully inclusive and accessible and ultimately in providing a quality learning experience for our children and young people.

It also addresses the Employment Equality Regulations relating to religion or belief, sexual orientation and age. Our Disability Equality Scheme enables us to achieve a framework for action which covers all equality strands and ensures that we meet our responsibilities of the public sector duties in an inclusive way.

We will continue to meet our statutory duties by reporting annually on the progress of the Disability Equality Scheme. This will be reviewed by the Governors and will cover activities undertaken in relation to the equality strands and promoting community cohesion.

APPENDIX A

THE SCHOOL STAFF

TEACHING

Acting Headteacher	Mrs. C. Holden
Teacher	Miss R. Chell
Teacher	Mrs. G. Jermy
Teacher	Miss S. Di-Bella
Teacher (part-time)	Miss L. Harris
Teacher	Mrs. L. Oldfield
Teacher	Mrs. C. Smith
Teacher	Mrs W. Poucher
SENCO (part-time)	Mrs C. Golding

ANCILLARY

Learning Support Assistant/MSA	Mrs. J. Easter
Learning Support Assistant/MSA	Mrs. K. Essex
Learning Support Assistant/MSA	Ms. B. Dack-Daniels
Learning Support Assistant/MSA	Mrs. L. Laing
Learning Support Assistant/MSA	Miss A Eckersley
Learning Support Assistant	Miss A. Todd
Learning Support Assistant	Miss K. Trett
Learning Support Assistant	Miss K. Crompton
Learning Apprentice	Miss M. Able
Learning Support Assistant	Mrs K Wright
School Secretary	Mrs. K. Nudds
Cleaner	Norse
Kitchen Assistant	Mrs. C. Beckham
MSA	Mrs. M. Leverett

BOARD OF GOVERNORS

Chairman	John Ward
Staff Governors	Peter Johnson (Sedgeford) Ruth Chell (Docking, Co-opted) Catherine Golding (Brancaster, Co-opted)
Headteacher	Sarah Bocking
LA Governor	Sally Beeston
Parents Governors	Jennie Brooks (Brancaster) Lucy Tagg (Docking) Claire Mears (Sedgeford)
Foundation Governors	Docking - Alastair Symington Patricia Lloyd Sedgeford - John Ward Melanie Hutchinson Peter Cook Brancaster - Susan Campbell James Fox Revd Susan Bowden-Pickstock
Associate Governors	Donald Morton & Andrew Morrison (Docking) Verily Borthwick & Richard Roberts (Brancaster) Mike Frost - (Sedgeford)
Clerk to the Governors	Mrs. J. Hill

APPENDIX B

A LIST OF GOVERNORS' APPROVED POLICIES

SCHOOL POLICY DOCUMENTS (currently under review)

Accessibility
Admissions
Assessment and Marking
Attendance
Behaviour
Charging
Child Protection
Collective Worship
Complaints Procedure
Disability Equality Scheme
Educational Visits
Emergency School Closure Policy
Exclusion
EYFS Policy
Finance
Fire Risk Assessment
Freedom of Information
Health and Safety
Homework
Lettings
Lone Working
Marking Policy
Medicines Policy
Pay Policy
Performance Management
Safeguarding Policy
Sex and Relationships Policy
Smoke Free
Special Educational Needs
Whistleblowing

APPENDIX B cont'd

A List of Governors' Approved Policies (continued)

CURRICULUM POLICY DOCUMENTS (currently under review)

Teaching and Learning

- Art
- Assessment, Marking and Reporting
- Design and Technology
- English
- Geography
- History
- Internet Acceptable Use
- Library
- Mathematics
- Music
- Physical Education
- Religious Education
- Science
- PSHE

All policies are available for inspection in the school office during school hours and copies can be made available on request.

APPENDIX E

IN-SCHOOL TESTING INFORMATION

In KS1 and KS2 the School has adopted **Assertive Mentoring** (known as "AiM") which enables staff to monitor the progress of the children through effective, regular assessments and target setting. This is ongoing and is rewarded half-termly.

Year		Test
R	-	Early Learning Goals
1	-	Phonics Screening Assessment
2	-	SATs - Test in Maths & English
3	-	Maths & English Optional SATs
4	-	Maths & English Optional SATs
5	-	Maths & English Optional SATs
6	-	SATs - Test in Mathematics and English

Reading is tested throughout the school

All assessments will change from September 2015, although all years except 2 and 6 are being assessed against the new curriculum from September 2014.

APPENDIX F

KS2 School Results 2014

	Percentage at each level					
	Below level 3	3	4	5	Pupils not entered	Pupils absent
English						
Reading	20	20	60	40	0	0
Writing	0	50	50	10	0	0
SPaG	10	10	80	40	0	0
Maths	0	40	60	50 (10% L6)	0	0
Reading, Writing & Maths			50	10	0	0

KS 1 Teacher Assessment Results 2014

	Below level 2b	2b+	Level 3	Pupils not entered	Pupils absent
English					
Reading	26	74	16	0	0
Writing	26	74	26	0	0
Maths	10	90	21	0	0

Year 1 Phonics Assessment

90% pass