

WILMINGTON JUNCTION

As viewed, in the fog, from the I-93 overpass.
The straight track ahead leads to Reading, Melrose and eventually to Boston. This is known as the Western Route. The track to the right is the "Wildcat" branch. The Wildcat is a 3.16 mile track connecting the Western Route and the Lowell Line. The Wildcat is the only remaining segment of the Andover and Wilmington Railroad. The A&W was abandoned in 1848 when the Western Route was built from Boston, Melrose, Reading, Andover, Lawrence, Haverhill and eventually to Portland Maine and beyond.



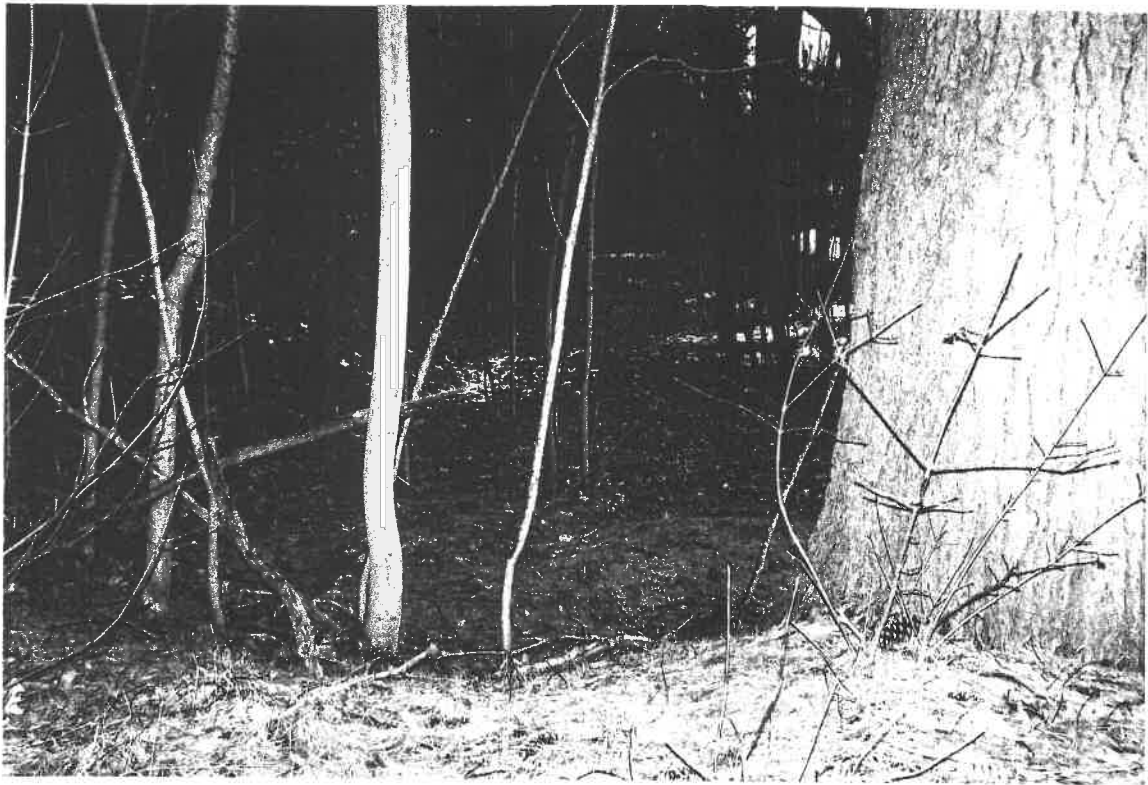
RIVER STREET BERM

This photo was taken off the bridge on River Street in Andover. The rise in the background was the grade for the right of way of the Andover & Wilmington Railroad. This used to be a good fishing spot but is overgrown with weeds now. Over the top of the grade can be seen water. The water is what we used to call the Shawsheen River Flats. It is closer to Lowell Junction than Ballardvale.



BALLARDVALE STATION

This private home located at 265 Andover Street was the Ballardvale station on the Andover and Wilmington Railroad. It is located on the south side of Andover Street about 100 -200 yards in from the intersection of Woburn Street. On the other side of the street, the right of way is fairly apparent and a stone with a bronze marker has been erected to memorialize the railroad.



PHILLIPS STREET RIGHT OF WAY

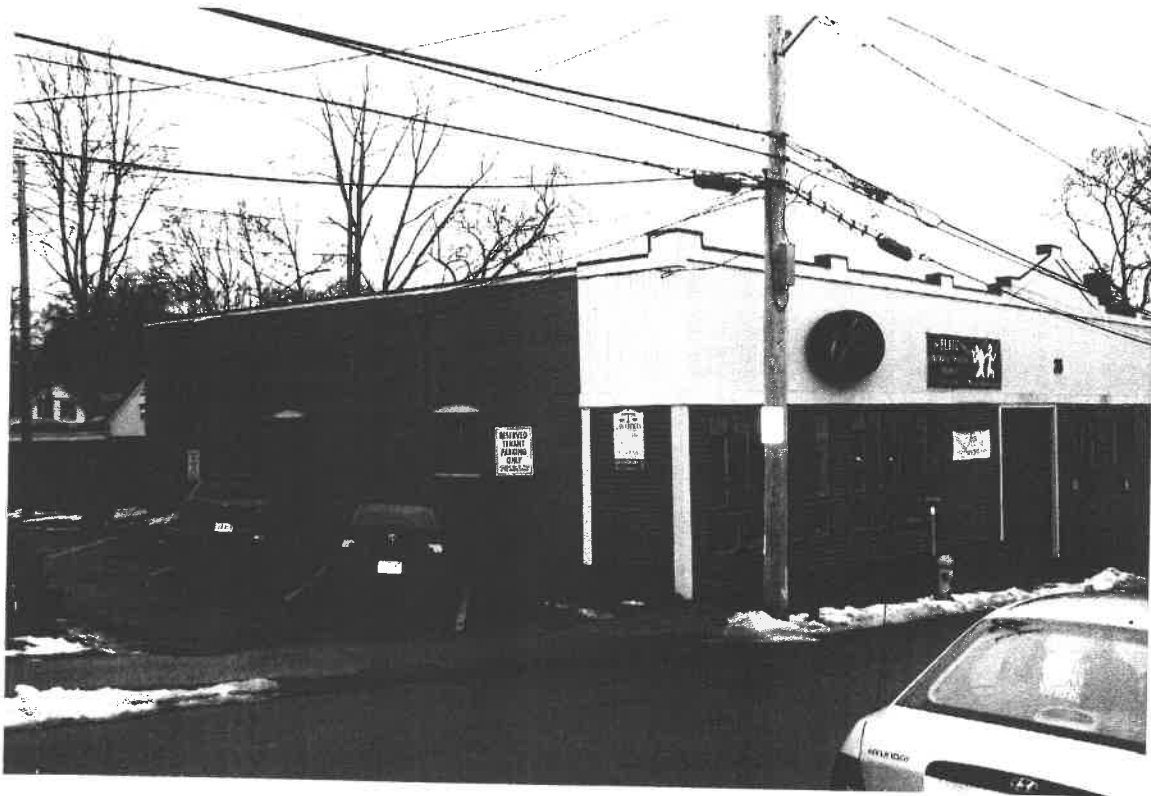
The former A & W right of way crosses Phillips St., Andover about 15 feet east off the SE corner of the intersection of Phillips and Abbott Street. It can be seen here through the overgrowth. The fact that the abandonment occurred in 1848, makes it very difficult in some instances to follow the route that the tracks took.

Satellite maps, on the internet were invaluable in my research, in areas where encroachment had not occurred.



ROSE COTTAGE

This is located at the corner of Central and Chestnut Streets in Andover. It is said that the wood burning locomotive of the Andover and Wilmington Railroad spewed ash and cinders onto the roof and yard as it passed by close to the house.



SITE OF ANDOVER FREIGHT HOUSE

The freight house stood on this spot. It is not known if the building is the original freight house, or not. The address is 26 Essex Street and its present tenant is a fitness establishment.



ESSEX STREET RIGHT OF WAY

The driveway shown leading to this house at 14 Essex Street, in Andover is believed to be the original A & W right of way. The house was built sometime following the abandonment of the railroad circa 1848. The building on the right of the photo is said to have been the freight house. At the photographer's back on the north side of Essex Street was the location of the Andover railroad station. On the site where the Andover Playhouse movie theatre stood. This building was razed for the library expansion and the addition of parking areas.



FREIGHT HOUSE, NORTH ANDOVER

This is located at the corner of Main and Sutton Streets in North Andover, set back on an angle. The side of the building was set parallel to the train tracks. I am supposing that this was the end of the line until the A & W was extended to Haverhill in 1837.

Andover & Wilmington Railroad

Timeline

1800 Middlesex Canal began operating
1833 Boston & Lowell Railroad Incorporated
1833 Andover & Wilmington Railroad Incorporated
1836 Andover & Wilmington completed
1837 Boston & Main Railroad established
1844 Boston & Maine intentions to build Western Route
1846 Intentions to relocate the B & M RR in Andover and discontinue a portion of the A&W
1848 A & W Abandoned
1850 Establish the Wilmington Branch (Wildcat)

A&W

- Began near Sutton's Corner North Andover. When extension to Haverhill made in 1837 it joined with present Haverhill line at curve at the end of Charles St.
- Ran South along which is now Waverly Road (formerly Railroad Avenue)
- South along what is now High St in Andover as far as the intersection of High, Harding and Walnut Ave.
- Diverted and ran on a portion of Hartigan's Court then curved slightly to follow the hill contour..
- Crossed present North Main Street at Lewis St. There was a maintenance facility for the RR in this area.
- Crossed Pearson St.
- Andover Station was where the former Andover Playhouse movie theatre was..
- Crossed Essex St R.O.W. is driveway for 14 Essex St.
- Freight house was 26 Essex St.
- Crossed Central St at intersection of Chestnut St. and continued through land now St. Augustine's School.
- Went under School St. at approximately 51-53 School St.
- Crossed Abbott Street just NE of intersection of Phillips St and then crossed Phillips St.
- Followed Abbott St on east side to Spring Grove Cemetery.
- Bisected Spring Grove Cemetery.(part of R.O.W. filled in for additional gravesites)
- Crossed Abbott St with overpass and R.O.W. is now road into Poms Pond.
- Crosses Andover St about 100-200 yards from Woburn St. intersection
- Bronze marker on North side of Andover St. can see R.O.W.
- Private house at 265 Andover St was A&W Ballardvale station.
- Crossed River St. See grade berm east of bridge across swamp.
- Crosses River St again, Lowell Jct Rd and shows up behind 330 Ballardvale St.
- Joined with present Wildcat Branch (original A&W) crossing Salem St, Glen Road, Clark St, Main St before joining with Lowell Line in Wilmington Center.



Map of:
[1-63] River St
Andover, MA 01810

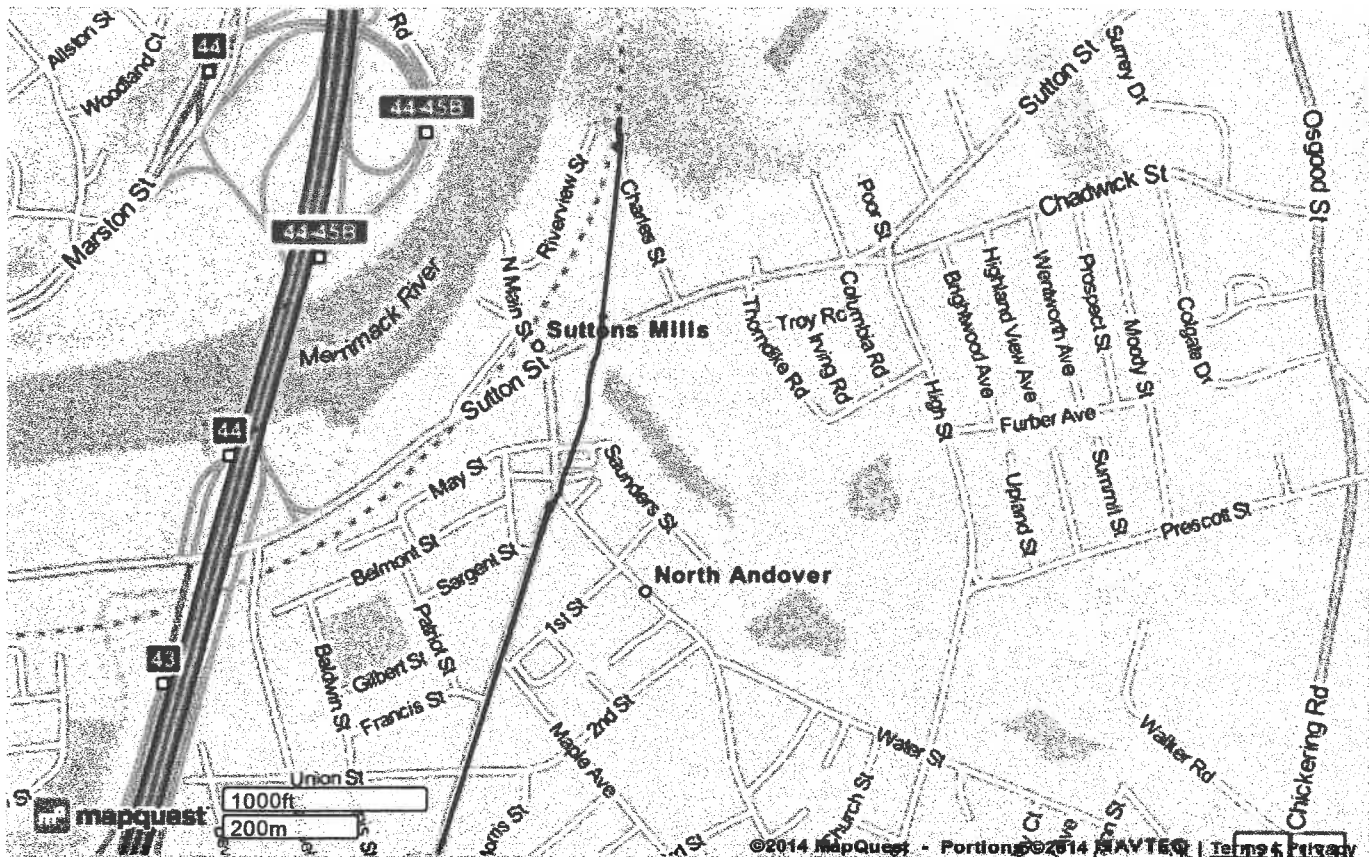
Notes

Andover & Wilmington Railroad Route

1 OF 9

FREE NAVIGATION APP
SELECT: ☐ IPHONE ☐ ANDROID

Enter your mobile number



©2014 MapQuest, Inc. Use of directions and maps is subject to the MapQuest Terms of Use. We make no guarantee of the accuracy of their content, road conditions or route usability. You assume all risk of use. [View Terms of Use](#)



mapquest

Notes

Andover & Wilmington Railroad Route

2 of 9

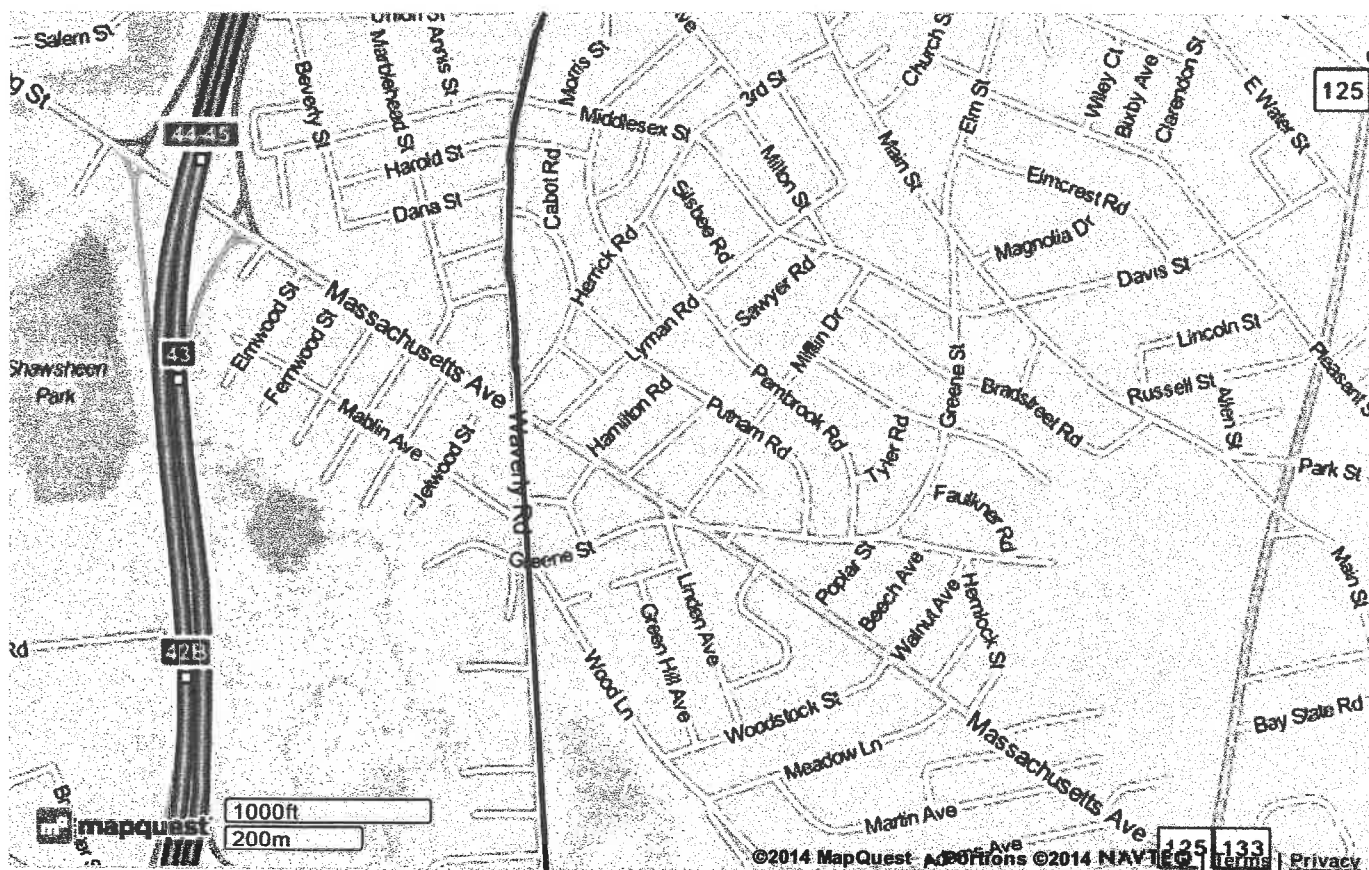
Map of:

[1-63] River St

Andover, MA 01810

FREE NAVIGATION APP
SELECT: ☐ IPHONE ☐ ANDROID

Enter your mobile number



©2014 MapQuest, Inc. Use of directions and maps is subject to the MapQuest Terms of Use. We make no guarantee of the accuracy of their content, road conditions or route usability. You assume all risk of use. [View Terms of Use](#)



mapquest®

Notes

Andover & Wilmington Railroad Route

3 OF 9

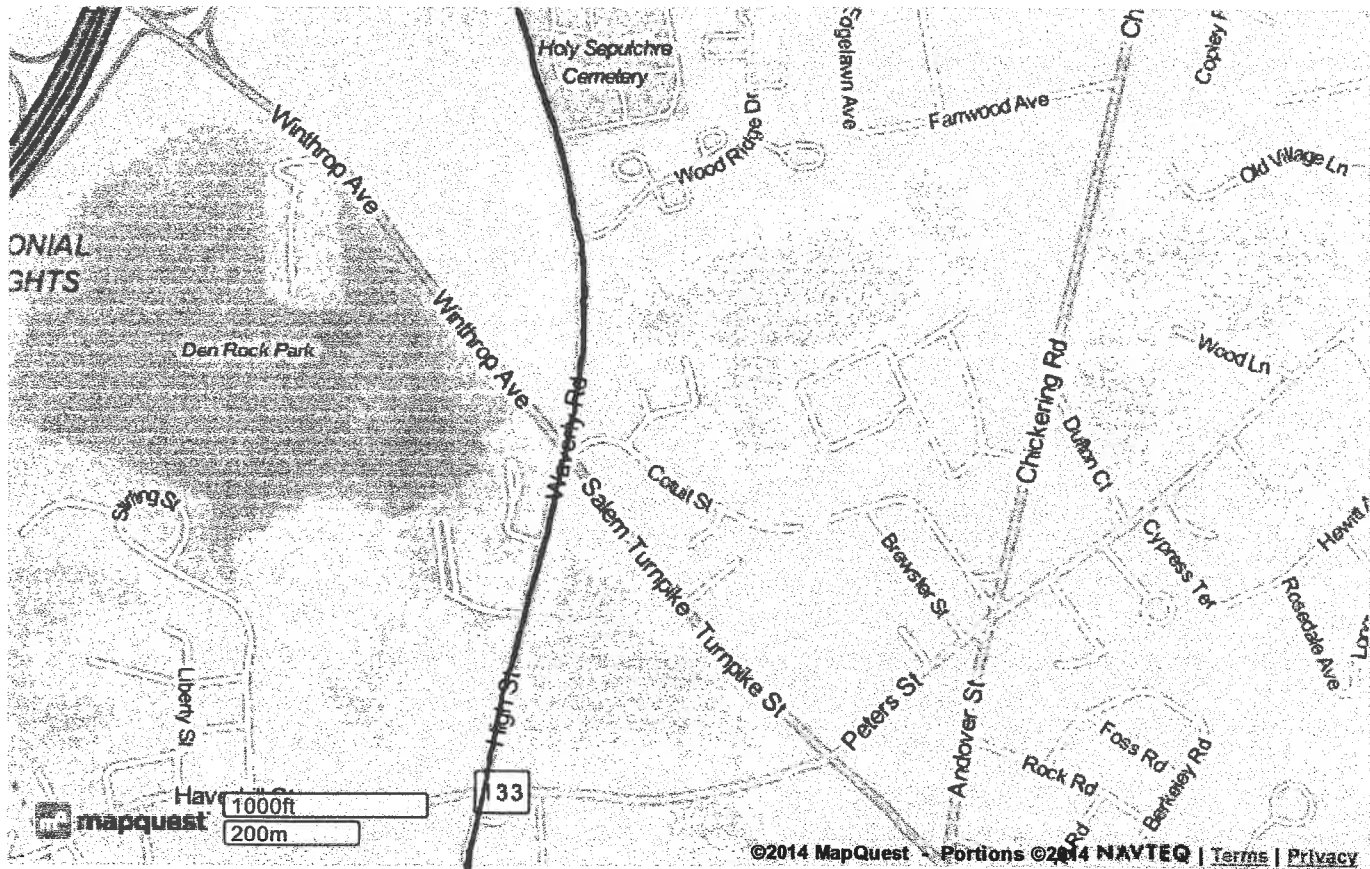
Map of:

[1-63] River St

Andover, MA 01810

FREE NAVIGATION APP
SELECT: ☐ IPHONE ☐ ANDROID

Enter your mobile number



©2014 MapQuest Portions ©2014 NAVTEQ | [Terms](#) | [Privacy](#)

©2014 MapQuest, Inc. Use of directions and maps is subject to the MapQuest Terms of Use. We make no guarantee of the accuracy of their content, road conditions or route usability. You assume all risk of use. [View Terms of Use](#)

Notes

Andover & Wilmington Railroad Route

4 of 9



mapquest

Map of:

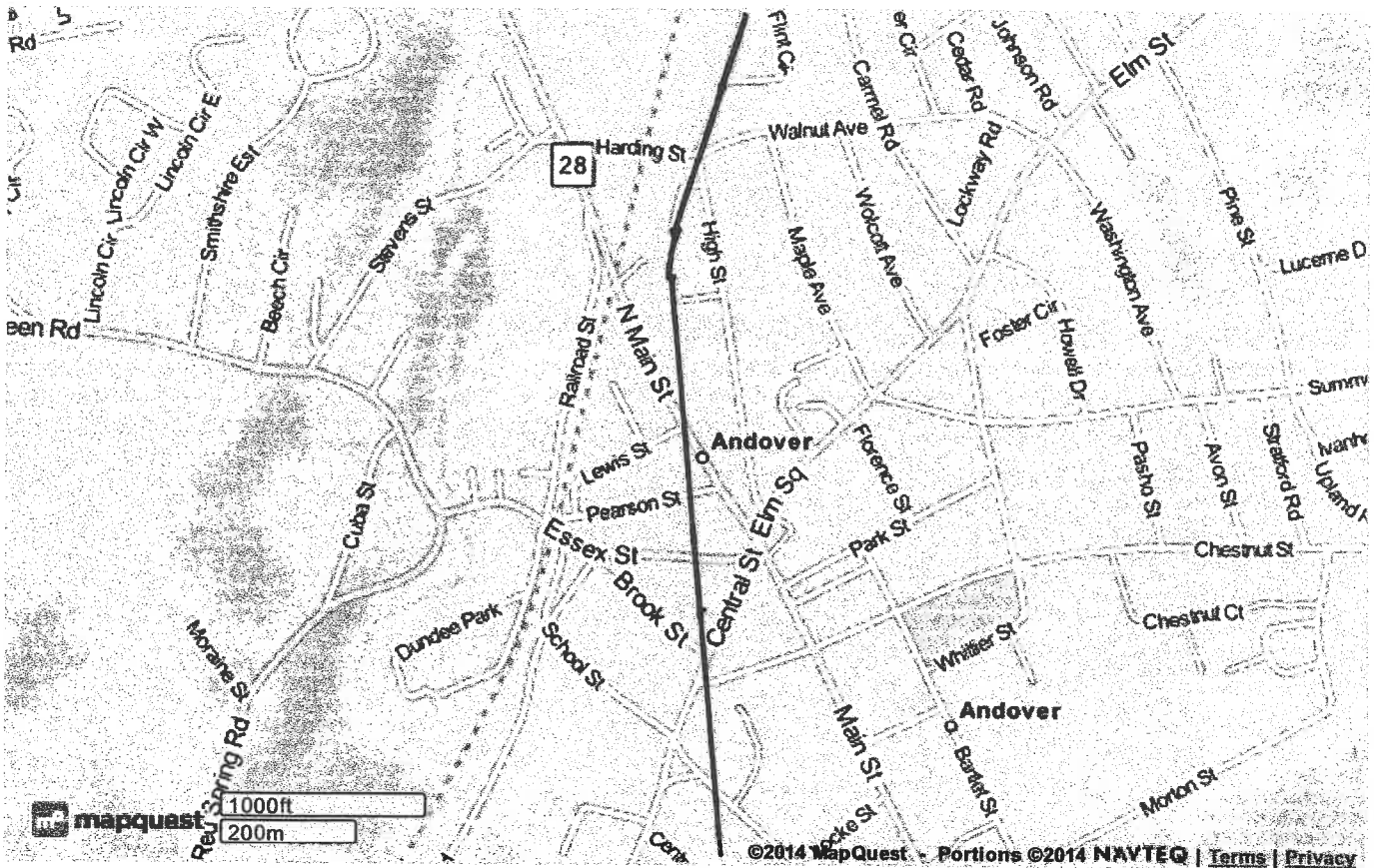
[1-63] River St

Andover, MA 01810

FREE NAVIGATION APP

SELECT: ☐ IPHONE ☐ ANDROID

Enter your mobile number



©2014 MapQuest, Inc. Use of directions and maps is subject to the MapQuest Terms of Use. We make no guarantee of the accuracy of their content, road conditions or route usability. You assume all risk of use. [View Terms of Use](#)

**mapquest****Notes**

Andover & Wilmington Railroad Route

5 of 9

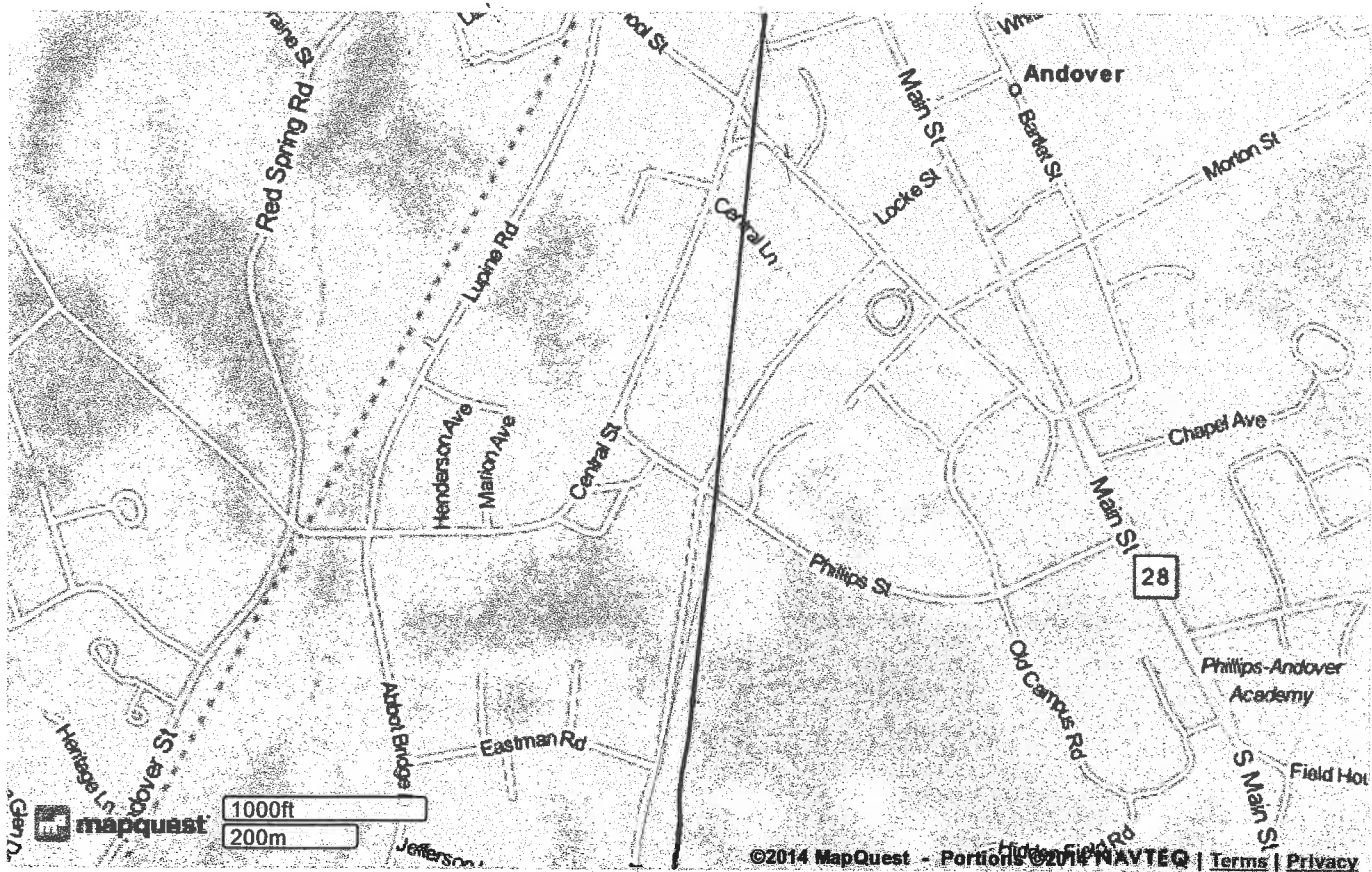
Map of:

[1-63] River St

Andover, MA 01810

FREE NAVIGATION APP
SELECT: ☐ IPHONE ☐ ANDROID

Enter your mobile number



©2014 MapQuest, Inc. Use of directions and maps is subject to the MapQuest Terms of Use. We make no guarantee of the accuracy of their content, road conditions or route usability. You assume all risk of use. [View Terms of Use](#)



Notes

Andover & Wilmington Railroad Route

6 of 9

Map of:

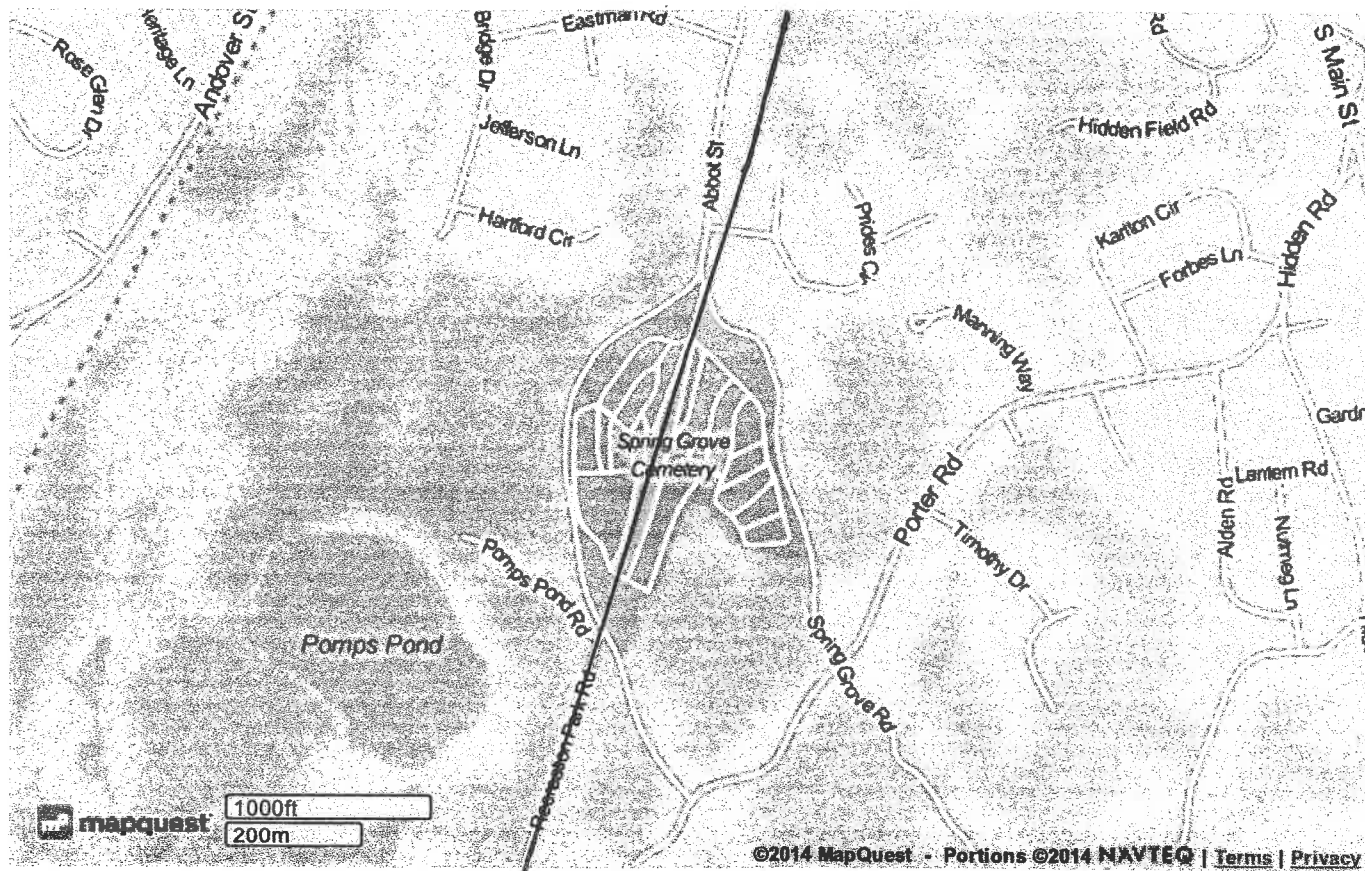
[1-63] River St

Andover, MA 01810

FREE NAVIGATION APP

SELECT: ☐ IPHONE ☐ ANDROID

Enter your mobile number

©2014 MapQuest - Portions ©2014 NAVTEQ | [Terms](#) | [Privacy](#)

©2014 MapQuest, Inc. Use of directions and maps is subject to the MapQuest Terms of Use. We make no guarantee of the accuracy of their content, road conditions or route usability. You assume all risk of use. [View Terms of Use](#)

**mapquest**

Notes

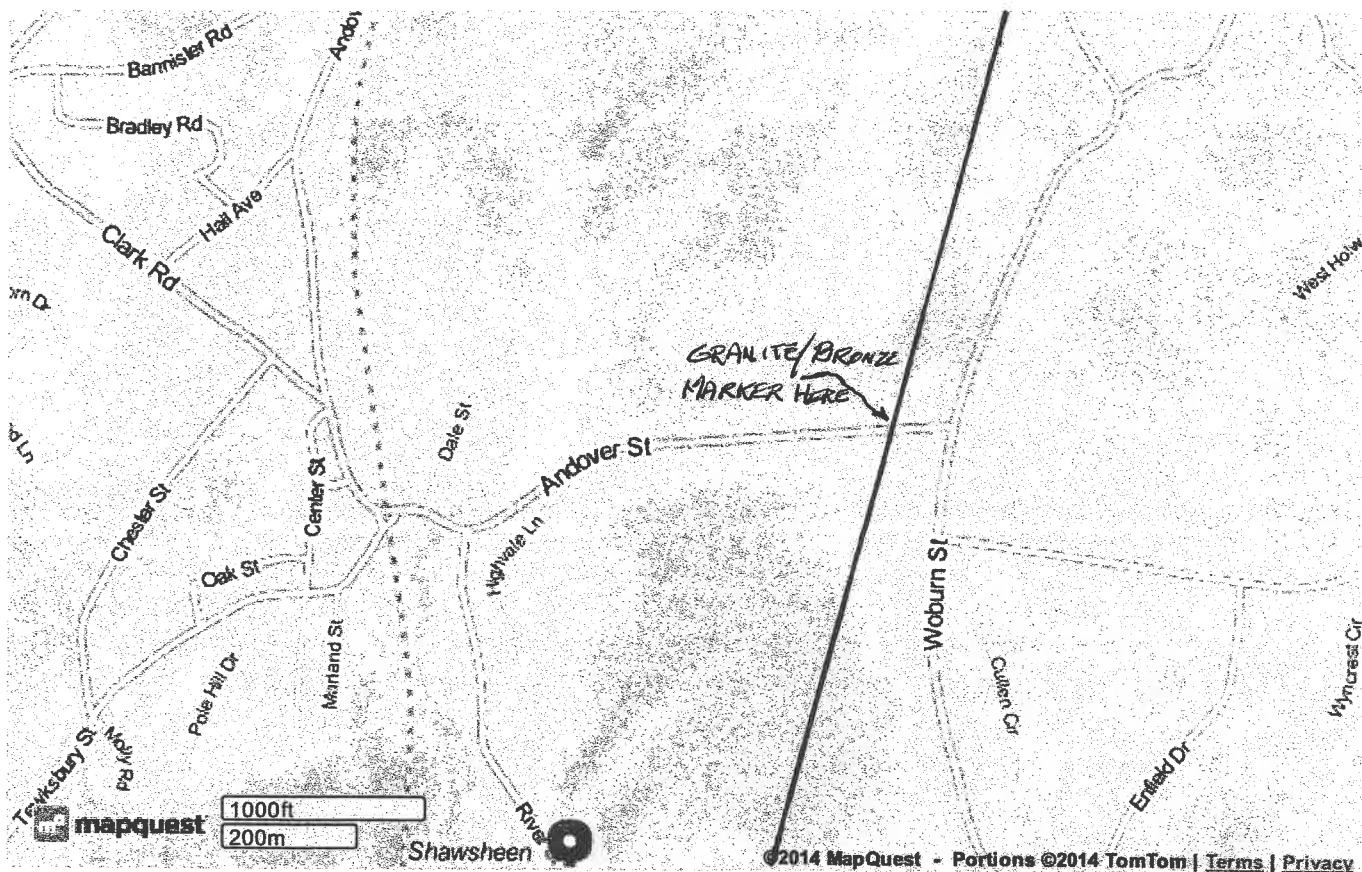
Andover & Wilmington Railroad Route

7 of 9

Map of:

[27 - 79] River St

Andover, MA 01810-5907



©2014 MapQuest, Inc. Use of directions and maps is subject to the MapQuest Terms of Use. We make no guarantee of the accuracy of their content, road conditions or route usability. You assume all risk of use. [View Terms of Use](#)

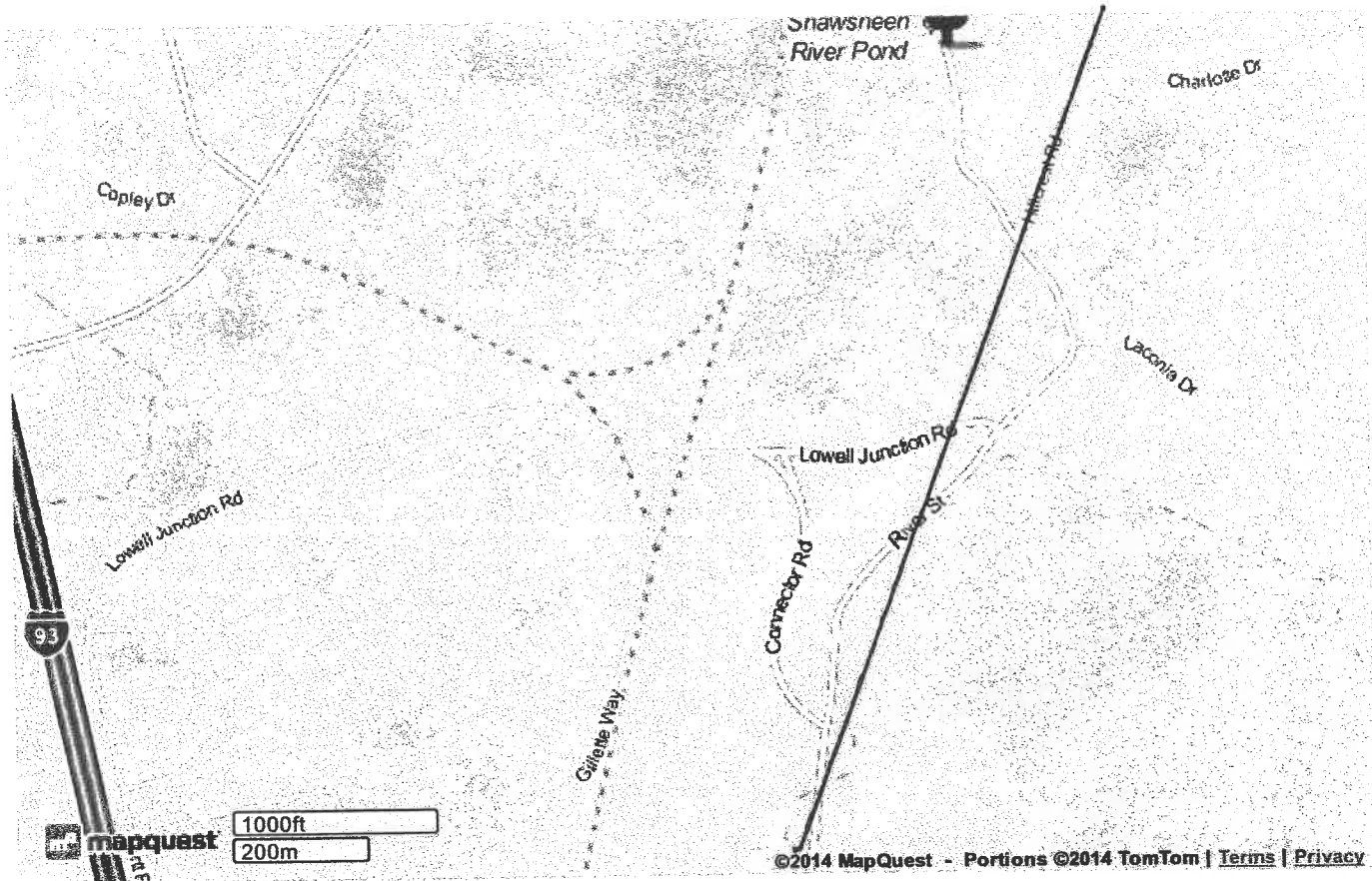


Notes

Andover & Wilmington Railroad Route

8 of 9

Map of:
[27 - 79] River St
Andover, MA 01810-5907



©2014 MapQuest, Inc. Use of directions and maps is subject to the MapQuest Terms of Use. We make no guarantee of the accuracy of their content, road conditions or route usability. You assume all risk of use. [View Terms of Use](#)

Notes

Andover & Wilmington Railroad Route

9 of 9



Map of:

[27 - 79] River St

Andover, MA 01810-5907



©2014 MapQuest, Inc. Use of directions and maps is subject to the MapQuest Terms of Use. We make no guarantee of the accuracy of their content, road conditions or route usability. You assume all risk of use. [View Terms of Use](#)