

**BRIGHTON**

**OFFICIAL  
PROGRAMME 6<sup>D</sup>.**

(COPYRIGHT. Regd. Stationers Hall.)

**SPEED TRIALS**

Organised by THE BRIGHTON & HOVE MOTOR CLUB LTD,  
MADEIRA DRIVE. 10.30 a.m. & 2 p.m.  
SATURDAY, SEPTEMBER 14, 1935.

THE FIRST FULL REPORT OF THIS EVENT WILL BE  
PUBLISHED IN NEXT TUESDAY'S (17th Sept.) ISSUE OF

**The Motor**  
*The National Motor Journal.*

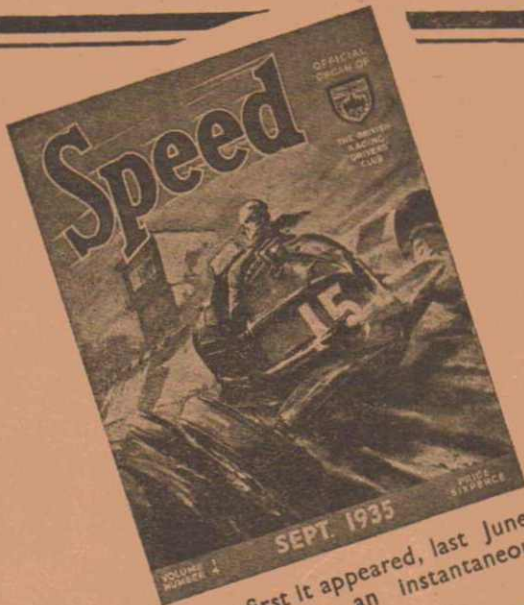
"THE MOTOR" is the first out with all the motoring news,  
whether reports of sporting events, or details of the  
latest developments in cars and accessories.

Those planning the purchase of a new car will find "The  
Motor" of valuable assistance. Authoritative road test  
reports of different models are a regular feature.

**EVERY TUESDAY - PRICE 4<sup>D</sup>.** Of all Bookstalls & Newsagents

PUBLISHED BY TEMPLE PRESS LIMITED, 5-17 ROSEBERY AVENUE, E.C. 1.

L. N. COLE  
1, INGRAM ROAD  
THORNTON HEATH  
SURREY CR7 8EE



The September issue is further distinguished by the new full-colour cover by H. J. Moser.

When first it appeared, last June, "SPEED" was an instantaneous success.

Letters have poured in on the Publishers from all parts of the World welcoming "Speed".

Month by month the circulation of "SPEED" breaks new records.

Splendidly produced, absolutely accurate in detail and packed with interesting matter, "SPEED" provides Sporting Motorists everywhere with ideal reading matter.

Lavishly illustrated with unique and exclusive photographs and drawings, every page of "SPEED" **LIVES.**

For all the up-to-the-minute news and gossip on Motor Racing matters, refer to "SPEED".

**Buy it - Read it - Order it !**

L. N. COLE  
1, INGRAM ROAD  
THORNTON HEATH  
SURREY CR7 8EE

Conducted by  
ALAN C. HESS.

**ON SALE**  
ON  
**MONDAY**  
(SEPTEMBER 16)

# PROGRAMME OF BRIGHTON SPEED TRIALS

(COPYRIGHT. Regd. Stationers Hall)

MADEIRA DRIVE

Saturday, September 14th 1935.

Organised by the Brighton & Hove Motor Club Ltd.

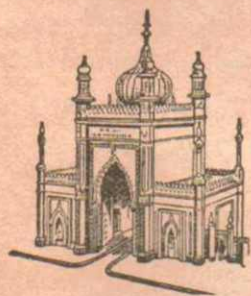
## WARNING to the Public.

**MOTOR RACING IS DANGEROUS** and Spectators attending this Track do so entirely at their own risk and it is a condition of admission that the promoters, owners of the Track, and the drivers and owners of Vehicles are absolved from all liability in respect of accidents causing damage or personal injury to spectators.

Published by the BRIGHTON & HOVE MOTOR CLUB LTD.

Hon. Sec. : S. W. Chandler, 24 Market Street, Brighton, I.

Printed by HORTON-STEPHENS, 26 Clifton Terrace, Brighton, I.



Opposite Royal Pavilion.

WITHIN A FEW MINUTES OF THE SEA FRONT.  
MOST CONVENIENT for ALL ENTERTAINMENTS.

R.A.C. APPOINTMENT.

## BLENHEIM HOTEL

FOOD OF THE BEST — COOKED AND  
SERVED TO PERFECTION. EVERY  
DESIRED ACCESSORY TO COMFORT

60 BEDROOMS WITH HOT AND COLD WATER.

Telephone : Brighton 3195.

For Illustrated Tariff write to Mrs. M. G. Penfold

*When in London  
visit*

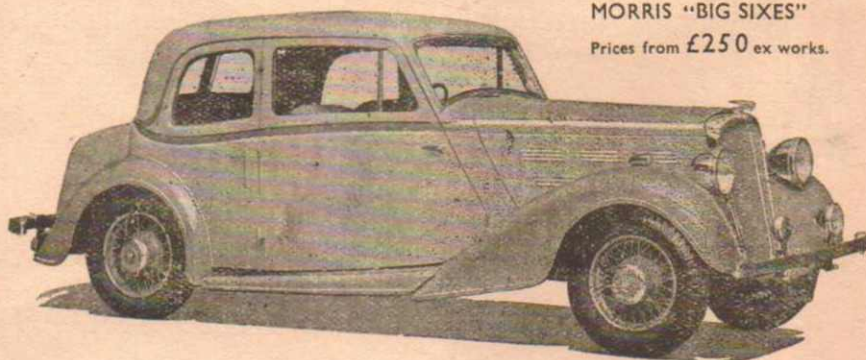


MORRIS HOUSE  
BERKELEY SQ., W.1.  
*and see the range of  
New Morris Models (Series II)*

Hire Purchase.  
Technical Instruction.

Part Exchange.  
Driving Tuition.

MORRIS "BIG SIXES"  
Prices from £250 ex works.



**STEWART & ARDERN LTD**

*Morris Distributors for the Metropolis & South East Essex*

**MORRIS HOUSE, BERKELEY SQ., W. I.**  
AND REGIONAL DEPOTS

GORDON STEWART, Governing Director.

GEORGE H. UPJOHN, Deputy Governing Director.

# BRIGHTON SPEED TRIALS.

Under Open Permit No. 121 granted by R.A.C. and Open Permit No. 0.63 granted by A.C.U.

The Event is held under the patronage of the Club President, The Earl Howe, C.B.E., V.D., P.C., and the Club Vice-Presidents, His Worship the Mayor of Brighton, Councillor S. G. Gibson, J.P. His Worship the Mayor of Hove Councillor C. S. Loadman, His Grace The Duke of Richmond & Gordon, Sir Algernon Guinness Bt. Sir Cooper Rawson, M.P., and W. Jermyn-Harrison, Esq. B.A.,

## LIST OF OFFICIALS.

### Stewards :

**Appointed by the R.A.C. :** Sir Algernon Guinness, Bart.

„ „ „ **A.C.U.:** Professor A. M. Low.

„ „ „ **A.C.U.** (South Eastern Centre) R. J. Holloway, Esq.

**Stewards Observer :** Neville Hodson, Esq.

**Stewards of the Promoting Club :** Leon Cushman, Esq. F. H. Nye, Esq.

**Timekeeper,** (Official Timekeeper to R.A.C., & A.C.U) A. Geo. Reynolds, Esq.

**Assistant Timekeeper :** G. Reynolds, Esq.

**Time Auditor :** H. P. Powell, Esq.

**Judge—Finishing Line :** H. Colbourne, Esq.

**Judges—Starting Line :** L. Watts, Esq. S. G. Bradshaw, Esq.

**Starter :** P. F. Croysdill, Esq.

**Starting Marshals :** E. Quero, Esq. K. F. Cable, Esq. H. C. Albino, Esq.  
C. S. Gazzard, Esq. H. D. Jones, Esq.

**Chief Competitors' Park Marshal :** J. Sayner, Esq.

**Competitors Park Marshals :** J. O. Roe, Esq. J. A. Driskell, Esq.  
C. A. Broomhall, Esq. G. Moxon Cook, Esq.

**Finishing Line—Chief Marshal :** E. Britten, Esq.

**Assistant Marshals & Flag Marshals :** J. Swan, Esq. Members of the Southern Observers Club.

# MOORE'S

MOORE of BRIGHTON (1924) Ltd.

67 - 68 PRESTON STREET, BRIGHTON.  
2nd AVENUE, HOVE & RUSSELL SQ., BRIGHTON

**Sole District Distributors and  
Service Agents for**

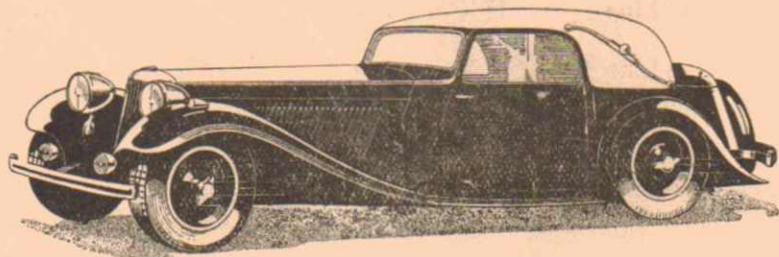
**CHRYSLER**

**STANDARD**

AGENTS  
**AUSTIN CARS**



AGENTS  
**MORRIS CARS**



The New S.S. Convertible Coupe £385.

## The 1936 "STANDARD" Prices.

NINE 2-door Saloon .....	£135.	TEN 4-door De Luxe .....	£189.
NINE 2-door De Luxe .....	£155.	LIGHT "12" Saloon de luxe	£195.
NINE 4-door De Luxe .....	£169.	TWELVE Saloon de luxe .....	£229.
SIXTEEN Saloon de luxe.....	£269.		
LIGHT TWENTY de luxe .....	£275.		

## OFFICIALS continued.

**Scrutineers :** H. R. Godfrey, Esq. E. C. Baragwanath, Esq.  
C. Volk, Esq. C. L. Clayton, Esq.

**Assistants :** S. R. Mahood, Esq. J. C. Woodfield, Esq.  
T. W. Fassett, Esq.

**Press Secretary & Results Marshal :** E. Andre Tebbs, Esq.

**Motor Cycle Liaison Marshals:** R. Brewin, Esq, S. Berrington Stoner, Esq  
E. G. Brewin, Esq.

**Public Address Marshal :** G. Denton, Esq.

**Assistant** D. Collins Esq.

**Clerk of the Course :** G. H. Drewitt, Esq.

**Club Hon. Medical Officer :** Dr. Kenneth Box, M.C., M.R.C.S., L.R.C.P.

**Hon. Organising Secretary & Deputy Clerk of the Course:** S. W. Chandler, Esq

The Club's Medical Officer and Members of the St. John's Ambulance Brigade will be in attendance

The Promoting Club wish to take this opportunity of thanking all those Honorary Officials who have so kindly undertaken to give assistance.

## SPEED TABLE.

Class	C.C.	HALF-MILE.		1933	
		Sec.	Road Dry m.p.h.	Sec.	Road Wet m.p.h
Standard Sports	1100	33 1/5	54.22	35 1/5	51.14
" "	1500	31 3/5	56.96	31 1/5	57.69
" "	3000	—	—	30 1/5	59.60
" "	Unlimited	27 4/5	64.75	30 0	60.00
Motorcycles with Sidecars or Three Wheelers.	Unlimited	—	—	28 3/5	62.94
Racing Cars	850	28 0	64.29	31 4/5	56.60
" "	1100	27 3/5	65.22	31 4/5	56.60
" "	1500	27 1/5	66.18	27 4/5	64.75
" "	3000	24 2/5	73.77	25 2/5	70.87
" "	Unlimited	23 4/5	75.63	24 1/5	74.38
Solo Motor Cycles	350	25 1/5	71.43	27 2/5	65.69
" "	600	23 1/5	77.59	24 2/5	73.77
" "	Unlimited	22 2/5	80.36	23 1/5	77.59

**G.A. Motors L<sup>TD.</sup>** 50 St. James's St.  
Tel. Brighton 4583  
**NEW & USED Light Car Specialists**

Any make of New  
Car supplied.

Cars bought for Cash.

Over 40 Used Cars  
always in stock.

OPEN SUNDAYS  
10.30 a.m. to 1 p.m.



Cars and Motor-  
Cycles taken in  
Part Exchange.

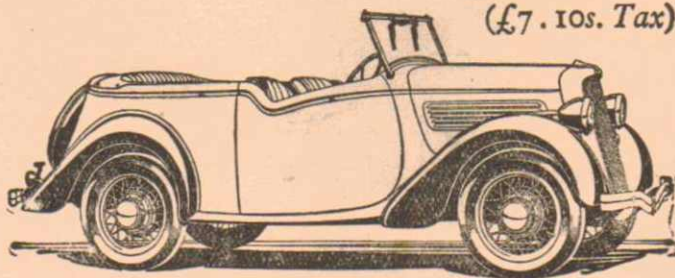
Hire Purchase and  
Insurances effected.

Trial Runs without  
obligation.

A CAR FOR EVERY POCKET

***NOW—the new De Luxe  
Ford Touring Car***

(£7.10s. Tax)



**£135** at Works, Dagenham

The new open Ford car is very smart in appearance. It gives a high-class, economical performance and seats four adults in comfort. All weather equipment is standard. The easily erected hood folds completely out of sight when not in use. The car is available in a variety of attractive colour-schemes. Get into touch with us at once for early delivery.

**Hartley & Midgley Ltd.**

74 Preston Rd. PHONE  
Kingsway, Hove B'TON 2212  
PORTBLADE 8231



## APPRECIATION.

The Organizers wish to express their sincere thanks to the following, for the several services or facilities.

The MAYOR and CORPORATION of BRIGHTON for allowing the Madeira Drive to be used.

The BOROUGH ENGINEER and his STAFF for the co-operation.

The CHIEF CONSTABLE of BRIGHTON for Police co-operation.

The O.C. 44th DIVISIONAL SIGNALS for telephone arrangements by kind permission of Captain(T) Kenneth J. Boag under the direction of C. S. M. WALES.

The ST. JOHN'S AMBULANCE BRIGADE.

The PYRENE CO., for Fire Fighting Apparatus.

H. P. POWNAL, Esq, for Timekeepers Buses.

The SWITCHIT RELAY Co, for the broadcasting arrangements.

Messrs CAFFYNS LTD. and

Messrs FIELDS GARAGE for Breakdown Appliances.

Messrs JOSEPH LUCAS Ltd. for Electric Siren in Paddock.

**The following PRIZE DONORS are also warmly thanked:—**

Messrs. HORTON-STEPHENS, Printers, Clifton Terrace, Brighton, for the "Ladies' Cup."

Messrs. NEWMANS, "The Motor People of Brighton," Old Steine, for cup for fastest time by B. & H.M.C. member on Solo motorcycle.

---

## WARNING to the Public.

The public are warned that on no account may they cross the Madeira Drive during the event or watch the proceedings from underneath the Collonade or from the South side of the Madeira Drive.

---

For Waterproofs, Rubber Boots, Luggage Covers, Ground Sheets, Motor Cushions and Accessories.

## **The London India Rubber Co.**

92 WESTERN ROAD, BRIGHTON (Between Preston Street, & Montpelier Road.)

Tel. Brighton 3681.

For Trusses, Surgical Belts, Elastic Stockings, Air Cushions, Air & Water Beds, Surgical Instruments and all classes of Surgical Goods.

# The Light Car

THE ONLY JOURNAL IN THE WORLD  
DEVOTED EXCLUSIVELY TO THE  
INTERESTS OF LIGHT CAR OWNERS

*Regular Features include :*

All the Latest Motoring News. Eve-of-the-Event Programmes of Sporting Events. Graphic illustrated descriptions of Motor Trials and Racing Events. Test Run Reports of Current Models telling prospective owners just what they want to know. Touring articles - breezily written and highly informative. Also RICH MIXTURE by "Focus," TECHNICAL ASPECTS by Louis Mantell, PRACTICAL ASPECTS by "Shacklepin," SPORTS JOTTINGS by "The Blower," and AFFAIRS OF THE MOMENT by The Editor.

**EVERY FRIDAY 3d.**

*Of all bookstalls and newsagents.*

**SEE NEXT FRIDAY'S ISSUE  
FOR REPORT OF THIS EVENT**



TEMPLE PRESS LIMITED,  
5-17 Rosebery Avenue, London, E.C.1

Motor Repair & Tuning Specialist.

**PACKHAMS**

**SOUTH ROAD, BRIGHTON, 6.**

PHONE PRESTON 2434.

**Engine Balancing, Modifying Cylinder  
Heads, Port Grinding, Special Crankshafts,  
Con. Rods, Pistons, etc. etc.**

## FASTEST TIME OF THE DAY.

A Special Cash Prize of £100 for the fastest time of the day by a Motor Car, has most generously been presented by the **Brighton Corporation** and the Club would like to take this opportunity of publicly expressing their sincere appreciation of this munificent gift.

This has permitted the Club to offer **£30 for the fastest time of the day by a Solo Motor Cycle.**

Both these prizes will be presented by the Mayor from the Dias at the Starting Line at the conclusion of the meeting.

## LIST OF ENTRIES.

Owing to insufficient entries in Classes 1 and 3, these classes are grouped with Class 2 to make one Scratch Class for members of the Brighton & Hove Motor Club only and for which there will be three awards.

NO.	NAME OF ENTRANT.	MAKE OF CAR.	C.C.	Time Taken
72	Rodney Gardner	... Frazer-Nash	1496	
126	A. S. Whiddington	... Frazer-Nash	1657	
135	G. Harrington	... M.G. Magnette	1287	
130	R. W. Collins	... M.G. Magnette	1287	
134	A. D. Langridge	... M.G. "P" type	847	
140	E. R. Stafford	... M.G. Magnette	1287	

1st..... Speed..... 2nd..... Speed..... 3rd..... Speed.....

Class 4. Standard Sports Cars up to 850 c.c. (unsupercharged )

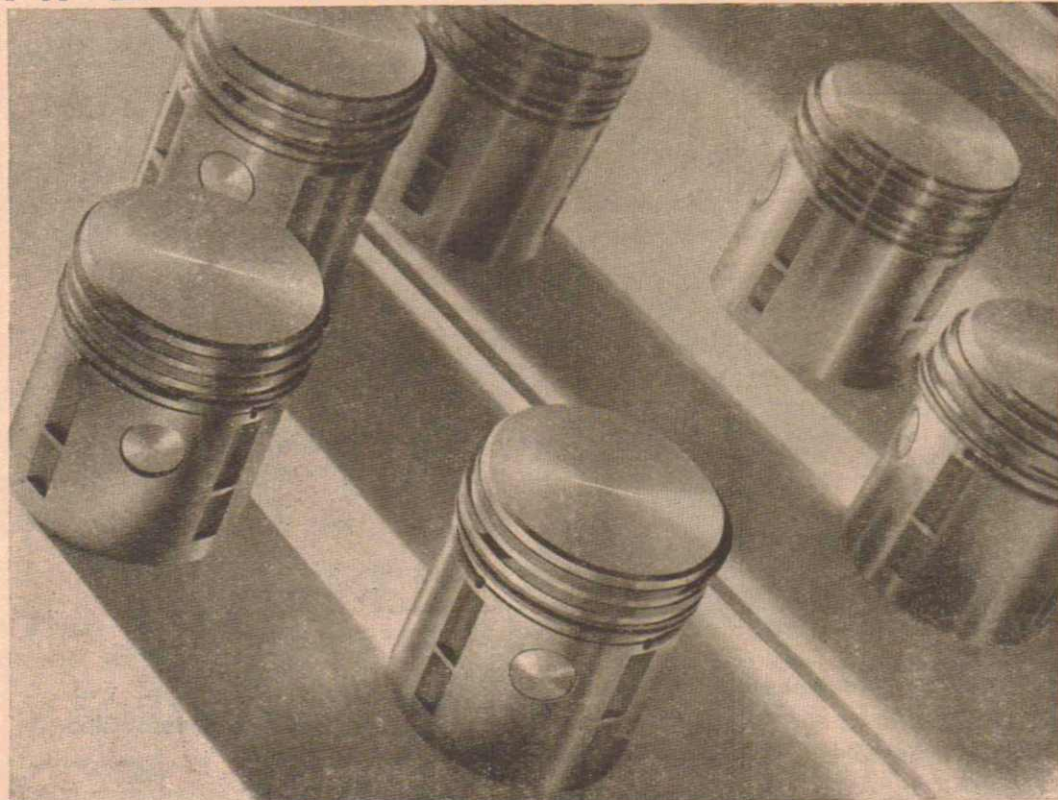
**Class Cancelled** owing to insufficient entries.

---

**NEWMANS** OLD STEINE BRIGHTON *are the* **LANCHESTER People.**

---

# H. L. HAMILTON & SON LTD.



Stockists  
of

## **AEROLITE** COMPENSATING PISTONS

Renowned for their long life and efficiency; giving silent, smooth running and reduced oil and petrol consumptions.

**LARGEST PISTON FACTORS IN SUSSEX**

**WHOLESALE ONLY**

Specialists in—

CYLINDER, CRANKSHAFT & SURFACE GRINDING AND PORT  
POLISHING TO THE TRADE

AXLE SHAFTS, GEARS, VALVES and BEARINGS, CROWN and  
BEVEL WHEELS FOR ALL MAKES

STARTER RING GEARS

**20-21A BEDFORD PLACE, BRIGHTON.**

Phone.: Hove 3113 and

Telegrams "Pistons, Brigh on"

3434

● YOUR LOCAL GARAGE WILL GIVE YOU EVERY INFORMATION.

**Class 5. Standard Sports Cars up to 1,100 c.c.  
Un-supercharged.**

NO.	NAME OF ENTRANT.	MAKE OF CAR	C.C.	Time Taken
127	M. P. Tenbosch	... F.I.A.T. Ballila	995	
134	A. D. Langridge	... M.G. "P" type	847	
131	D. A. Smith	... Amilcar	1078	
133	J. V. Hewes	.. Riley	1084	
132	C. E. Taylor	... Alta	1074	
112	A. Ashton Rigby			
	Driver Miss Jean Williams	M.G. Magna	1087	
94	W. P. U. Constable	.. Ulster Austin	747	

1st..... Speed..... 2nd..... Speed..... 3rd..... Speed.....

## PARKING?

FROM MADEIRA DRIVE TURN UP CHARLOTTE ST. or BEDFORD ST. to

### ST. JAMES & BEDFORD Garages LTD.

Opposite the best part of the Course to see both Start & Finish.

● Parking for 300 Cars under cover.

17, 18 and 19 UPPER ST. JAMES STREET,  
Brighton 7.

**ALWAYS a Large Stock of SECONDHAND CARS**

Open DAY & NIGHT. A.A. Appointed Garage & Official Repairer

BREAKDOWN SERVICE Phone B'ton. 3976.

Phone : Hove 5222-3

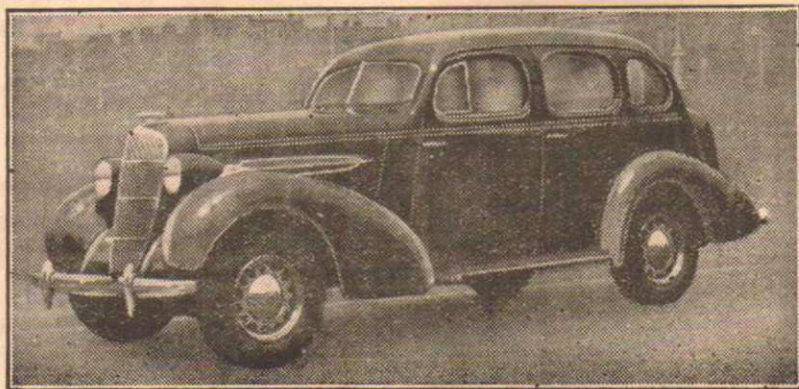
Telegrams : Eloc Hove.

# COLE & COLE L<sup>TD.</sup>



**SEAFIELD GARAGE, KINGSWAY, HOVE,  
and 83 WESTERN ROAD, HOVE.**

**DISTRIBUTORS FOR OLDSMOBILE CARS.**



**ALWAYS OPEN—GARAGE AND WORKSHOPS.**

**Capt. ERIC COLE and Mr. LESLIE COLE. Direct Personal Supervision.**

**Class 6. Standard Sports Cars up to 1,500 c.c.****Un-supercharged.**

NO.	NAME OF ENTRANT	MAKE OF CAR	C.C.	Time Taken
105	Miss Elizabeth Blathwayt ...	Aston Martin	1495	
72	Rodney T. Gardner ...	Frazer-Nash	1496	
106	C. J. Mann ...	Aston Martin	1495	
107	J. N. Innes ...	Frazer-Nash	1496	
74	J. O. C. Samuel ...	Frazer-Nash	1496	
128	G. Bagratouni ...	M.G. Magnette "N" typ.	1287	
127	M. P. Tenbosch ...	F.I.A.T. Ballila	995	
129	C. M. Seymour ...	Bugatti	1496	
116	G. Weldon ...	Frazer-Nash	1496	
119	J. F. May ...	M.G. Magnette	1287	
109	Miss Joan Richmond ...	Triumph	1232	
112	A. Ashton Rigby			
	Driver Miss Jean Williams ...	M.G. Magna	1087	
123	John Ogle ...	Bugatti	1496	
130	R. W. G. Collins ...	M.G. Magnette	1296	
140	E. R. Stafford ...	M.G. Magnette	1287	

1st..... Speed..... 2nd..... Speed..... 3rd..... Speed.....

**Class 7. Standard Sports Cars Unlimited.****Un-supercharged.**

NO.	NAME OF ENTRANT.	MAKE OF CAR	C.C.	Time Taken
101	R. M. Strang ...	Hudson Terraplane	4168	
42	Forrest Lycett ...	Bentley	7963	
115	E. Ainsworth ..	Ford V.8	3622	
123	John Ogle ...	Bugatti	1496	
118	A. E. Dobell ...	Lagonda	4467	
103	A. H. Beadle ....	Delage	4500	
122	E. R. Yates ...	Railton	4168	
120	Charles Follett ...	Alvis	2762	
121	Charles Follett			
	Driver			
125	E. M. Edlin ...	Alvis	2762	

Established 1902.

Buy your New Car from the oldest established Motor Dealer

**GEORGE HILL**

OF BRIGHTON.

**31 KING'S ROAD.**

Chevrolet

Standard

Singer

Chrysler

Morris

Daimler

Rover

Austin

Vauxhall

Armstrong-Siddley

Wolseley

Ford

Any Make of Car supplied.

Part Exchange.

Cars bought for Cash.

TELEPHONE 2061.

## The Philosophy of Life.

If you save money, you're a miser ;  
If you spend it you're a fool ;  
If you get it, you're a twister ;  
If you don't get it, you're no good ;  
So, what's the use of worrying ?  
Life is just one darned thing after another.

There is one bright spot in an otherwise gloomy world. COLLINS started making awards fifty years ago. To-day, competitors are trying still to win them. They know a good prize when they see one, so do we. That is why more and more CUPS, TROPHIES, MEDALS and BADGES pour out from—

**D. GEORGE COLLINS Ltd.**  
**118 Newgate Street, London, E.C.**

to the four points of the compass.

BIRMINGHAM

LONDON

SHEFFIELD



CLASS 7 continued.

124	A. Powys-Lybbe	...	Alvis	2511
112	A. Ashton Rigby	...	M.G. Magna	1087
116	G. Weldon	.	Frazer-Nash	1496
107	J. N. Innes	....	Frazer-Nash	1496
46	S. H. Allard	....	Ford V.8	3622
117	John Elliott	..	Ford V.8	3661
119	J. F. May	...	M.G. Magnette	1287
51	G. S. C. Matthews	...	Ford V.8	3621
126	A. S. Whiddington	...	Frazer-Nash	1657

1st..... Speed..... 2nd..... Speed..... 3rd..... Speed.....

**Class 8. Standard Sports Cars Ladies Only. Unlimited.**

105	Miss Elizabeth Blathwayt	...	Aston Martin	1495
111	Miss M. D. Patten	...	Alvis	2511
112	A Ashton Rigby			
	Driver Miss Jean Williams	...	M.G. Magna	1086
114	Miss Winifred Gazzard	...	S.S. "90"	2664
106	C. J. Mann			
	Driver Miss Joan Weekes	...	Aston Martin	1495
113	Mrs. Ashton Rigby	...	M.G. "P" type	747

1st..... Speed..... 2nd..... Speed..... 3rd..... Speed.....

**Class 9. Supercharged Standard Sports Cars up to 850 c.c.**

"s" DENOTES SUPERCHARGER

110	A. R. Kennedy	...	M.G., s	847
98	Miss Peggy Blathwayt	...	M.G. J.4, s	747
88	V. W. Derrington	...	Austin, s	747
91	J. C. Elwes	...	M.G. J.4, s	747

1st..... Speed..... 2nd..... Speed..... 3rd..... Speed.....

## Class 10. Supercharged Standard Sports Cars up to 1100 c.c.

"s" DENOTES SUPERCHARGER

108	R. R. Jackson	...	M.G. Magnette, s	1086
49	G. Taylor	..	Alta, s	1074
87	V. W. Derrington	...	Salmson, s	1098
110	A. R. Kennedy	...	M.G., s	847
98	Miss Peggy Blathwayt	...	M.G. J.4, s	747
91	J. C. Elwes	...	M.G. J.4, s	747

1st..... Speed..... 2nd..... Speed..... 3rd..... Speed.....

## Class 11. Supercharged Standard Sports Cars up to 1650 c.c.

"s" DENOTES SUPERCHARGER

107	J. N. Innes	...	Frazer-Nash	1496
104	H. Parkinson	...	M.G., s	1286
100	A. F. P. Fane	...	Frazer-Nash, s	1496
108	R. R. Jackson	...	M.G. Magnette, s	1086
49	G. Taylor	...	Alta, s	1074
109	Miss Joan Richmond	...	Triumph, s	1232
91	J. C. Elwes	...	M.G. J.4, s	747

1st..... Speed..... 2nd..... Speed..... 3rd..... Speed.....

## Class 12. Supercharged Standard Sports Cars Unlimited.

"s" DENOTES SUPERCHARGER

99	L. G. Bachelier	...	Bugatti, s	2270
101	R. M. Strang	...	Hudson Terraplane	4168
102	Major A. T. G. Gardner	...	Mercedes Benz, s	6800
42	Forrest Lycett	...	Bentley	7963
47	R. F. Oates	...	Maserati, s	2811

BE ADVISED

BY \_\_\_\_\_

Local Branches :

BRIGHTON.

Showrooms, Garage & Works, 141 Dyke Road.

Showrooms 123-4 Western Road.

Garages Sillwood Street.  
Dyke Road Drive.

HOVE, Kingsway.

*CAFFYNS LTD*

The Leading Sussex  
Automobile Engineers & Agents

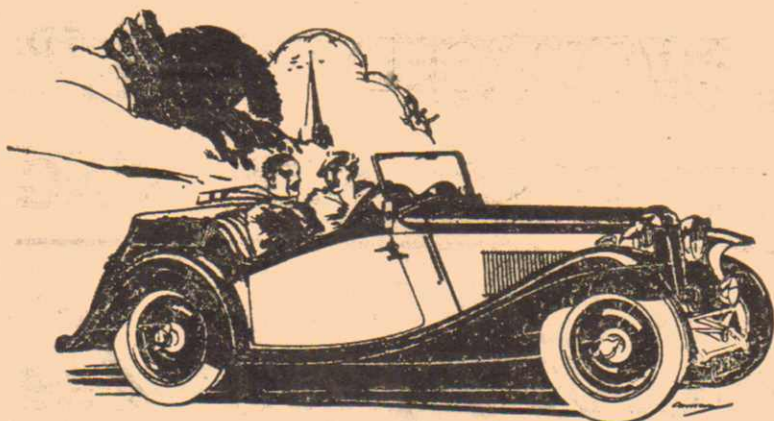
ON ALL MOTORING MATTERS

Agents for : --

ALVIS  
AUSTIN  
B.S.A.  
DAIMLER  
LANCHESTER  
MORRIS  
RILEY  
STUDEBAKER  
AND—  
WOLSELEY.

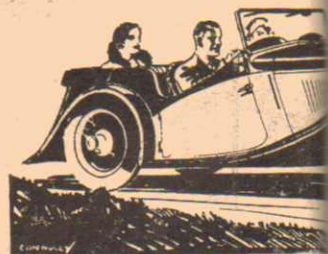
Branches at : --

BEXHILL  
BRIGHTON  
BURGESS HILL  
CHAILEY  
CUCKFIELD  
EASTBOURNE  
HASTINGS &  
ST. LEONARDS  
HAYWARDS HEATH  
HEATHFIELD  
HOVE  
LEWES  
UCKFIELD  
WORTHING  
&  
West WORTHING.



The M.G. Magnette (N Type) 2-seater £305

**SAFETY  
FAST!**



The M.G. Magnette (N Type)

WE have all models in stock  
and for demonstration, including the **Cresta Magnette**

● May we take you for a trial run?

Send us a Postcard or 'Phone . . . . .

**WORTHING 2585 for Service**



The M.G. Motorcycle

● ALL PRICES - EX

HIRE PURCHASE

::

SALES AND SERVICE

::

PART EX

**ESTA MOTOR CO. L<sup>TD.</sup>**

**ADWATER ROAD, WORTHING**

eat pleasure in announcing that they are now

**OFFICIAL DISTRIBUTORS**

**FOR**



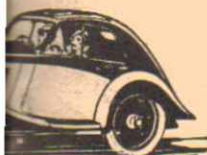
**CARS**

FOR—

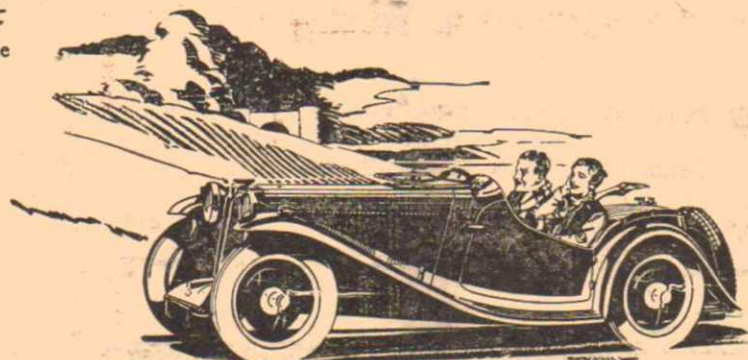
**WORTHING  
& BRIGHTON  
DISTRICT**



4-seater £335



(P Type) Airline Coupe  
290



The M.G. Midget (P Type) 2-Seater £222

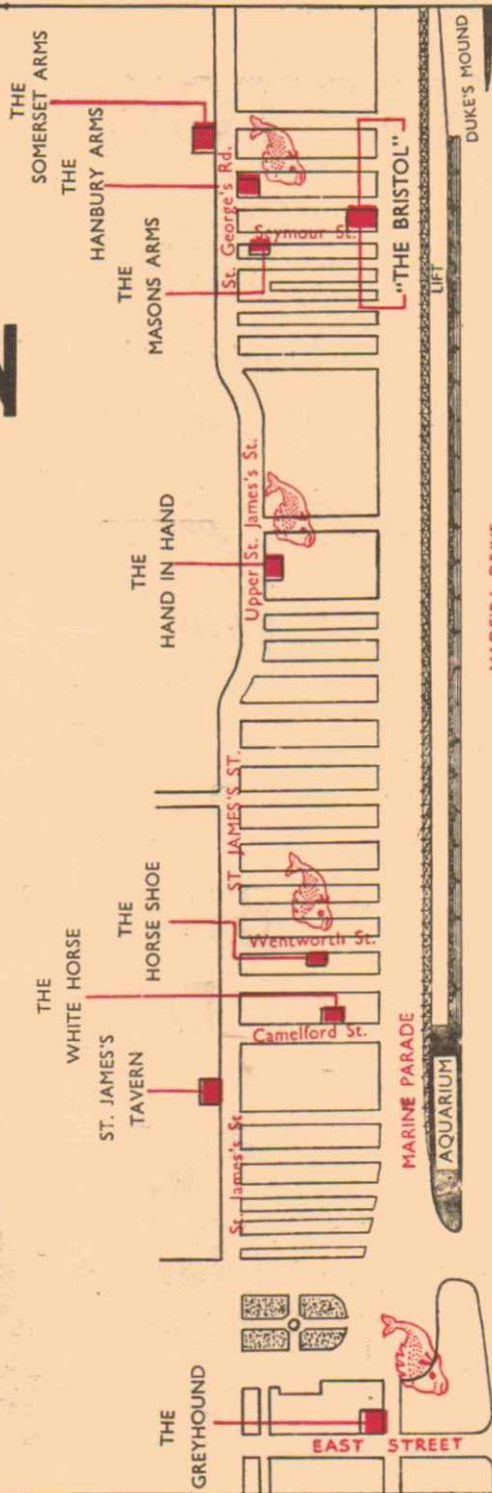
**CHANGES**

WHEN IN  
BRIGHTON  
TRY THE  
FAMOUS  
**KEMP TOWN  
BEERS**



Make "THE BRISTOL"  
your vantage point.  
The latest and best  
Saloon in Brighton.

**THE KEMP TOWN  
BREWERY  
BRIGHTON  
LIMITED**



MAP OF THE HOUSES BEHIND THE COURSE

CLASS 12 continued.

70	R. S. W. Wilkins	...	Alfa Romeo, s	2632
51	G. S. C. Matthews	...	Ford V.8	3621
97	Mrs. Hugh Jones	...	Alfa Romeo, s	1750
103	A. H. Beadle	...	Delage	4500
104	H. Parkinson	...	M.G., s	1286
100	A. F. P. Fane	...	Frazer-Nash, s	1496
91	J. C. Elwes	.	M.G. J.4, s	747
49	G. Taylor	..	Alta, s	1074
62	J. W. Whalley	...	Ford V.8	3622
143	Miss Joan Richmond	...	Auburn, s	4596

1st..... Speed..... 2nd..... Speed..... 3rd..... Speed.....

**Class 12a. Solo Motor Cycles up to 250 c.c.**

1	G. Tuffnell	...	O.K. Supreme	248
2	K. A. Frogley	...	B.S.A.	249
3	Eric Fernihough	...	Excelsior, J.A.P.	246
6	E. E. Garfield	...	O.K. J.A.P.	250

1st..... Speed..... 2nd..... Speed..... 3rd..... Speed.....

**INTERVAL.**

**Racing Resumed at 2 o'clock.**

---

**NEWMANS** OLD STEINE BRIGHTON *are the* **TERRAPLANE People.**

---

## AFTERNOON.

---

### Class 14. Ladies only. Unlimited c.c.

"s" DENOTES SUPERCHARGER

93	Miss D. M. B. Evans	...	M.G. "Q" type, s	746
45	J. Bolster			
	Driver Miss Barbara Skinner.		Bolster J.A.P.	1962
98	Miss Peggy Blathwayt	...	M.G. J.4, s	747
55	A. J. Cormack			
	Driver Miss M. Dickson	...	Alta, s	1496
68	R. Eccles			
	Driver Mrs. Roy Eccles	...	Eccles Special, s	1084
54	Mrs. Kay Petre	...	Riley, s	1496
87	V. W. Derrington			
	Driver Miss Joan Weekes	...	Salmson, s	1098
97	Mrs. Hugh Jones	...	Alfa Romeo, s	1750
63	A. C. Dobson			
	Driver, Miss D. Chaffin	...	Bugatti, s	2292
143	Miss Joan Richmond	...	Auburn, s	4596

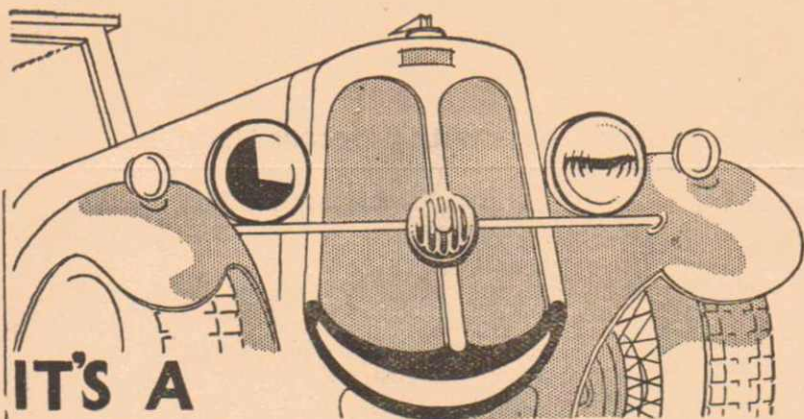
1st..... Speed.....      2nd..... Speed.....      3rd..... Speed.....

---

**NEWMANS** OLD STEINE  
BRIGHTON are the **DAIMLER** People.

---





**IT'S A  
WISE CAR THAT GETS ITS  
ACCESSORIES AT —**

<p><b>LICENCE HOLDERS</b> BRITISH MADE Screw Front N.P. 1/- Chromium - 2/9 Halford Bakelite 2/6</p> 	<p><b>ASH TRAYS</b></p>  <p>Halford N.P. - 9d. Chromium - 1/3 Bakelite - from 1/- BRITISH MADE</p>	<p><b>CAR POLISH</b> Halfords Highest Grade 2/9 per tin It Polishes and Preserves</p> 
<p><b>FOOT PUMP</b> Halford Junior 10/6 Halford Senior 15/- BRITISH MADE</p> 	<p><b>WINDSCREEN WIPERS</b></p>  <p>Stadium, Single - 4/- Lucas, Electric - 21/- Wiper Blades, from 9d.</p>	<p><b>LUGGAGE STRAPS</b></p>  <p>Large assortment at Halfords Leather - from 1/4 Cable Laid - 8d.</p>
<p><b>GREASE GUNS</b></p>  <p>British Made - from 4/- Nipples, assorted, from 2d.</p>	<p><b>FLOWER VASES</b></p>  <p>Bakelite, from 3/- E.P.N.S., from 3/3 BRITISH MADE</p>	<p><b>Fire Extinguishers</b></p>  <p>Halford C.T.C. 10/6 Halford Minor 15/- Halford Major 25/- GUARANTEED</p>

MAPS, MIRRORS, MASCOTS, CUSHIONS, SPARKING PLUGS

**HALFORDS**

**BEST CHOICE — BEST VALUE**

THE HALFORD CYCLE COMPANY LIMITED

**83 LONDON RD. and  
34/5 WESTERN RD.  
B R I G H T O N**

## Class 15. Motor Cycles with Sidecars Unlimited Capacity.

NO.	NAME OF ENTRANT.	MACHINE	C.C.	Time Taken
12	C. B. Bickell	... Ariel, s		499
4	Eric Fernihough	... Brough Superior J.A.P.		996
12a	Edd. Tiller	... A.J.S.		495
14	R. C. Rowland	.. Zenith		498
16	Kim Collett	.... Brough Superior		998
7	E. E. Garfield	... Brough Superior		996
15	W. E. Bury	.... Douglas		746

1st..... Speed..... 2nd..... Speed..... 3rd..... Speed.....

**Class 24** will now be run in order to permit Competitors to strip their machines for the Racing classes.

## JOIN the .. Brighton & Hove Motor Club

Ltd.

Associated with the R.A.C.

Affiliated to S.E. Centre A.C.U. and Sussex Motor Yacht Club.

Annual Subscriptions :

Car Member (covering motor cycle)	<b>£1 16 0</b>
Ditto for Cars 1,100 cc or under	<b>£1 12 0</b>
Lady Member ... ..	<b>£1 8 6</b>
Motor Cycle Member ... ..	<b>10 6</b>

● **The Subscription for Car Members includes Full Associate Membership of the Royal Automobile Club.**

Motorists already members of R.A.C.	<b>£0 15 0</b>
Ditto Ladies ... ..	<b>£0 7 6</b>

Application forms available from Hon. Secretary :

S. W. CHANDLER, 24 Market Street, Brighton, 1.



## AUTHORISED DISTRIBUTORS

SINGER

Armstrong Siddeley

ROVER

DODGE

TRIUMPH

RENAULT

Exchanges • H.P. Terms, including Tax and Insurance  
• Free Driving Tuition.

# **MOODY'S**

## **MOTORS LTD.**

SALES : 115 WESTERN ROAD, HOVE. Tel. Hove 2920.

GARAGE & SERVICE : DAVIDGOR ROAD, HOVE. Tel. Hove 2178.  
OPEN ALL NIGHT.

## Class 16. Racing Cars up to 850 c.c.

"s" DENOTES SUPERCHARGER

NO.	NAME OF ENTRANT.	MAKE OF CAR	C.C.	Time Taken
93	Miss D. B. M. Evans	... M.G. "Q" type, s	746	
86	A. N. L. Maclachlan	.... Austin, s	747	
85	Mrs. D. G. Evans	... M.G. Monthlery Midget, s	746	
94	W. P. U. Constable	... Ulster Austin	747	
44	Sir Herbert Austin Driver L. P. Driscoll	... Austin, s	747	
91	J. C. Elwes	... M.G. J.4, s	747	

1st..... Speed..... 2nd..... Speed..... 3rd..... Speed.....

## Class 17. Racing Cars up to 1100 c.c.

"s" DENOTES SUPERCHARGER

NO.	NAME OF ENTRANT.	MAKE OF CAR	C.C.	Time Taken
83	Scuderia Joysticks Driver J. E. Breyer	... Joystick Spec. (Salome)	980	
84	Scuderia Joysticks Driver H. G. Campbell	... Amilcar	1078	
40	F. R. G. Spikins	... Singer Special, s	972	
87	V. W. Derrington	... Salmson, s	1098	
75	K. D. Evans	... M.G. Q type, s	746	
86	A. N. L. Maclachlan	... Austin, s	747	
44	Sir Herbert Austin Driver L. P. Driscoll	... Austin, s	747	
90	W. E. Harker	... Harker Special, s	1096	
85	D. G. Evans	... M.G. Monthlery, s	746	
67	Andrew Leitch	... Poppet 2	986	
81	G. B. C. Sumner	... Delilah 2, s	998	
78	R. J. W. Appleton	... Appleton Special, s	1087	
66	A. Ashton Rigby	... M.G. Magnette, s	1087	
68	Roy Eccles	... Eccles Special, s	1084	

WHAT . . .  
SIR MALCOLM CAMPBELL  
SAYS . . . .

Writing in "The Field" May 15th, 1935, commenting on the  
**INDEPENDENT SPRINGING** on his new 14 h.p. light six

# Vauxhall

"It is largely my interest in the aspect of Motor Car design that has led me to acquire one of the new 14 h.p. Vauxhalls. The 1934 model of which I took delivery eighteen months ago is still in commission, and has given me every satisfaction, but I was anxious to try out the independent front wheel suspension now fitted to these cars."

"So far I have only driven my new purchase for a matter of 900 miles, but I am delighted with its general performance. One of the principal advantages the new car has over the old is the increased riding comfort now obtained, which is undoubtedly gained by the independent front wheel suspension."

• Due to its outstanding popularity, the present Vauxhall Light Six ("D" Series) will be continued in its present form during next season.

YOU CAN ORDER WITH CONFIDENCE NOW FROM . .

*Mansfields Ltd.*  
*Incorporating Tomlinson*

**KINGSWAY** CORNER OF **HOVE**  
ST. LEONARDS GARDENS

Phone 8686 2 lines Portslade.

And at LEWES and EASTBOURNE,

CLASS 17 continued.

77	G. Hartwell	...	M.G. K3. s	1087
80	H. T. H. Clayton	...	Clayton Amilcar, s	1093
92	Squ. Ldr. W. Bowen-Buscarlet		Riley	1809
91	J. C. Elwes	...	M.G. J4. s	747
89	F. W. Carr	...	Singer	972
139	D. J. Briault	...	Alta, s	1074

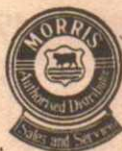
1st..... Speed..... 2nd..... Speed..... 3rd..... Speed.....

Class 18. Racing Cars up to 1500 c.c.

"S" DENOTES SUPERCHARGER

NO.	NAME OF ENTRANT		MAKE OF CAR	C.C.	Time Taken
72	Rodney T. Gardner	...	Frazer-Nash	1496	
65	G. H. Symonds	...	B.H.D. Special	1493	
73	J. C. Davis	...	Delage, s	1484	
66	A. Ashton Rigby	...	M.G. Magnette	1087	
74	J. O. C. Samuel	...	Frazer-Nash	1496	
79	H. L. Pownall	...	Bugatti	1496	
52	G. S. Griffiths	...	Anzani Nash, s	1496	
53	R. G. J. Nash	...	Union Special, s	1496	
54	Mrs. K. Petre	...	Riley, s	1496	
55	A. J. Cormack	....	Alta, s	1496	
82	W. G. Margetts	...	Terror I.S.M., s	1496	
59	N. S. Embiricos	.	E.R.A., s	1488	
80	H. T. H. Clayton	...	Clayton Amilcar, s	1093	
60	A. Baron	...	Bugatti, s	1496	
77	G. Hartwell	...	M.G. K.3, s	1087	
81	G. B. C. Sumner	...	Delilah 2, s	998	
68	Roy Eccles				
	Driver Mrs. Roy Eccles	....	Eccles Special, s	1084	
40	F. R. G. Spikins	...	Singer Special, s	972	
75	K. D. Evans	...	M.G. "Q" type. s	746	
76	G. Gaspar	...	Vale, s	1496	
69	R. R. Jackson	...	Alta, s	1500	
67	Andrew Leitch	...	Poppet 2	986	
78	R. J. W. Appleton	....	Appleton Special, s	1087	

1st..... Speed..... 2nd..... Speed..... 3rd..... Speed.....



**BRITAINS**  
GARAGE LTD.

**THE DISTRIBUTORS**

FOR

# MORRIS

## CARS

IN SOUTH CENTRAL SUSSEX

The New  
MORRIS 16  
and 18/6



£ 2 6 5  
Ex Works

INVITE YOU TO INSPECT THE

● FULL RANGE OF NEW MODELS ●

Prices from £118—£350. 8 h.p. to 25 h.p.

IN THEIR SHOWROOMS AT

**DAVIGDOR ROAD,  
HOVE.**

Phone Hove 4563

AND

**PRESTON ROAD,  
BRIGHTON.**

Phone Preston 3021

## Class 19. Racing Cars up to 3000 c.c.

"S" DENOTES SUPERCHARGER.

NO.	NAME OF ENTRANT	MAKE OF CAR	C.C.	Time Taken
38	G. P. Harvey Noble	... Bugatti, s	1990	
45	J. V. Bolster	... Bolster J.A.P.	1962	
47	R. F. Oates	... Maserati, s	2811	
58	N. S. Embiricos			
	Driver Capt. D. Taylor	... Bugatti, s	2261	
41	S. E. Cummings	... Vauxhall Villiers, s	2996	
64	R. O. Shuttleworth	.. Alfa Romeo, s	2904	
65	G. H. Symonds	... B.H.D. Special,	1493	
67	Andrew Leitch	... Poppet 2	986	
70	R. S. Wilkins	... Alfa Romeo, s	2632	
71	A. G. Bainton	... Bugatti, s	2261	
55	A. J. Cormack	... Alta, s	1496	
56	A. Esson-Scott	... Bugatti, s	1995	
52	G. S. Griffiths	... Anzani Nash, s	1496	
68	Roy Eccles	... Eccles Special, s	1084	
69	R. R. Jackson	... Alta, s	1500	
53	R. G. J. Nash	... Union Special, s	1496	
66	A. Ashton Rigby	... M.G. Magnette, s	1086	
63	A. C. Dobson	... Bugatti, s	2292	
79	H. P. Pownall	... Bugatti	1496	
142	Raymond Mays	... E.R.A., s	2000	

1st..... Speed..... 2nd..... Speed..... 3rd..... Speed.....

## Class 20. Racing Cars Unlimited capacity.

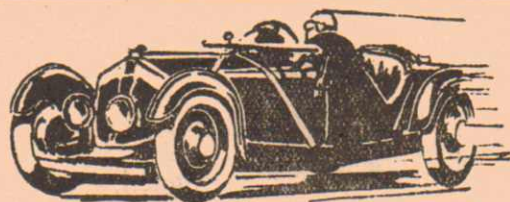
NO.	NAME OF ENTRANT	MAKE OF CAR	C.C.	Time Taken
43	C. E. C. Martin	... Bugatti, s	3275	
64	R. O. Shuttleworth	... Alfa Romeo, s	2904	
62	J. W. Whalley	.. Ford V.8	3622	
46	S. H. Allard	... Ford V.8	3622	

**NEWMANS**

OLD STEINE  
BRIGHTON

are the **BUICK** People.





SUPERTUNING

SUPERCHARGING

**VALE**

RE-BUILDING

REDESIGNING

We have always specialised in meeting the requirements of the enthusiast.

By reason of this specialisation, our mechanics, all of whom have considerable racing experience, are accustomed to precision work of the highest order.

**BE YOUR OWN DESIGNER ! SEND US YOUR SPECIFICATION, LET US QUOTE YOU.**

Abercorn 4141/2

**VALE ENGINEERING CO. LTD.**  
PORTSDOWN ROAD, MAIDA VALE.

Abercorn 4141/2

# REDHILL

# MOTOR & Cycle WORKS LTD.

The best selection of late used models in the district

**Part Exchanges.**

**Specially Easy Deferred Payments.**

**Exceptional Insurance Rates.**

**Brighton Road, Redhill. SURREY**  
Redhill 327

DISTRIBUTORS FOR—

**Norton - B.S.A. - Ariel - Triumph  
Sunbeam - Rudge - Excelsior  
O.K. Supreme - James - Matchless**

**B.S.A. 3-Wheelers and Scout Cars.**

**Appointed B.S.A. Spares & Service Depot**

Complete stock : Piston Rings - Brake Linings - Valves  
Guides - Sprockets - Etc. All makes. Sent C.O.D. anywhere

**Gloucester Place, Brighton.**  
B'ton. 5281. SUSSEX.

CLASS 20 continued.

44	Sir Herbert Austin Driver L. P. Driscoll	.. Austin, s	747
50	A. H. L. Eccles	... Bugatti, s	3300
41	S. E. Cummings	... Vauxhall Villiers, s	2996
53	R. G. J. Nash	... Union Special, s	1496
39	F. R. G. Spikins	... Hudson Terraplane spl.	4168
42	Forrest Lycett	... Bentley	7963
59	N. S. Embiricos	... E.R.A., s	1488
61	Oliver H. Bertram	... Delage	10688
47	R. F. Oates	... Maserati, s	2811
58	N. S. Embiricos Driver Capt. D. Taylor	... Bugatti, s	2261
45	J. V. Bolster	... Bolster J.A.P.	1962
51	G. S. C. Matthews	... Ford V.8	3621
48	G. Taylor	... Alta, s	1485
54	Mrs. Kay Petre	... Riley, s	1496
55	A. J. Cormack	... Alta, s	1496
56	A. Esson-Scott	.. Bugatti, s.	1995
57	T. B. O'Reilly	... G.N. Special	1112
60	A. Baron	... Bugatti, s	1496
38	G. P. Harvey Noble	.. Bugatti, s	1990
52	G. S. Griffiths	... Anzani Nash, s	1496
63	A. C. Dobson	... Bugatti, s	2292
141	John Cobb	... Napier Railton, s	23680
142	Raymond Mays	... E.R.A., s	2000

1st..... Speed..... 2nd..... Speed..... 3rd..... Speed.....

**Class 21. Solo Motor Cycles up to 350 c.c.**

NO.	NAME OF ENTRANT.	MACHINE	C.C. Time Taken
8	B. Keys	... Velocette	348
5	Eric Fernihough	... Excelsior J.A.P.	344
9	O. S. Scott	... A.J.S.	346
10	L. Jones	... Royal Enfield	344
11	J. L. Dimmock	... Cotton Blackburne	348

1st 5 Speed 77.59 2nd..... Speed..... 3rd..... Speed.....

**NEWMANS**

OLD STEINE  
BRIGHTON

are the **RILEY** People.

# SEYMOUR'S GARAGE

Proprietor—  
C. M. SEYMOUR, M.I.M.T

193 PRESTON ROAD,  
BRIGHTON.

ANY MAKE OF CAR SUPPLIED.

- SPECIALISTS in  
REPAIRS & TUNING  

---
- DRIVING TUITION.  
BREAKDOWN SERVICE.
- Phone: Preston 2530

## Class 22. Solo Motor Cycles up to 600 c.c.

NO.	NAME OF ENTRANT.	MACHINE	C.C.	Time Taken		
12	C. B. Bickell	... Ariel, s	499			
28	L. E. Good	... Rudge	600			
17	E. S. Oliver	... Excelsior	498			
18	G. Tuffnell	... Rudge	499			
19	R. G. Borradaile	... Rudge	499			
20	A. H. Mansfield	... Ariel	497			
21	G. W. D. Drew	... Douglas	494			
22	Wilhelm Roeder	... Ulster Rudge	500			
23	Edd. Tiller					
	Rider R. N. Persson	... Douglas	494			
24	F. J. Williams	... Cotton Blackburne	496			
25	O. S. Doulton	... Norton	490			
9	O. S. Scott	... A.J.S.	346			
26	K. B. Parrack	... Norton	490			
11	J. L. Dimmock	... Cotton Blackburne	348			
10	L. Jones	... Royal Enfield	344			
27	W. J. Pugh	... Excelsior J.A.P.	498			
29	S. Stubbings	... Ariel	497			
30	S. Stubbings					
	Rider E. R. Jay	... Scott Special	596			
31	Myles Rothwell					
	Rider V. Stafford	... Grindlay Peerless	498			
32	A. J. Rawlence	... Norton	490			
1st	12	Speed 76.92	2nd	Speed	3rd	Speed

## Class 23. Solo Motor Cycles Unlimited capacity.

"s" DENOTES SUPERCHARGER.

NO.	NAME OF ENTRANT.	MACHINE	C.C.	Time Taken
33	J. Bailey	... J.B.	994	
35	C. Neve	... Coventry Eagle	998	
22	Wilhelm Roeder	... Ulster Rudge	500	
31	Myles Rothwell			
	Rider V. Stafford	... Grindlay Peerless	498	
34	N. B. Pope	... Brough Superior, s	996	
36	G. Brough			
	Rider R. W. Storey	... Brough Superior	986	

**NEWMANS** OLD STEINE BRIGHTON are the **LAGONDA** People.

# MOTOR CYCLING

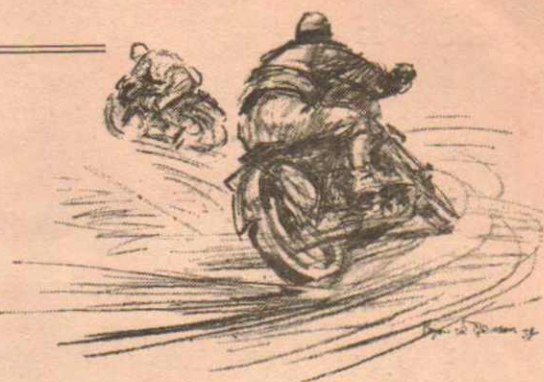
The Journal with the Pictorial Cover.

Every issue of "Motor Cycling" contains articles of interest to both touring and sporting riders, and the regular features are generally popular. Practical help to motorcyclists is given by frequent articles written by men who are themselves practical motorcyclists.

Owners of three-wheelers and side-car machines are catered for in "Motor Cycling" more fully than in any other journal.

Its road test reports are recognised as being authoritative and completely unbiased, and its descriptions of new models are full and accurate.

**EVERY WEDNESDAY - 3d.**  
of all bookstalls and newsagents.



**FIRST OUT  
WITH REPORTS  
OF ALL  
IMPORTANT EVENTS**

Published by Temple Press Ltd.  
5-17 Rosebery Avenue,  
London, E.C.1.

## YOUNG ACCUMULATORS

**Quicker starting—Longer life**

Used by  
Sir Malcolm Campbell, Earl Howe.  
and principal Racing Motorists.

Fitted on winning LAGONDA at LE MANS  
Grand Prix D'Endurance.

**THE YOUNG ACCUMULATOR CO.**

(1929) Limited

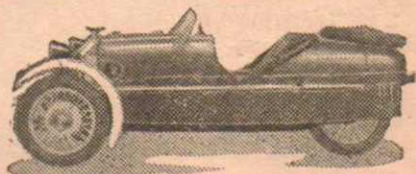
**NEW MALDEN, SURREY.**

Local Trade Distributors:

**B. M. A.**

37 CENTURION ROAD, BRIGHTON.

Tel, Brighton 4853.



Distributor for

## MORGAN CARS

Agent for **AUSTIN  
MORRIS  
STANDARD  
CARS**

## TURPINS

27 & 29 PRESTON ROAD,  
(London Road)  
BRIGHTON.

**CLASS 23 continued.**

4	Eric Fernihough	....	Brough Superior J.A.P.	996
12	C. B. Bickell	...	Ariel, s	499
17	E. S. Oliver	...	Excelsior	498
19	R. G. Borradaile	...	Rudge	499
23	Edd. Tiller			
	Rider Arne N. Persson	...	Douglas	494
25	O. S. Doulton			
	Rider L. N. Cole	..	Norton	490
15	W. E. Bury	...	Douglas	746
7	J. Garfield	...	Brough Superior	996
10	L. Jones	...	Royal Enfield	344
32	A. J. Rawlence	...	Norton	490
37	N. B. Pope			
	Rider F. Baker	...	British Anzani	750

1st.....4..... Speed.....87.38..... 2nd..... Speed..... 3rd..... Speed.....

**Class 24. Solo Motor Cycles Unlimited capacity. Members of the Brighton & Hove Motor Club.**

**This Class will be run immediately after Class 15.**

17	E. S. Oliver	...	Excelsior	498
24	F. J. Williams	...	Cotton Blackburne	496
9	O. S. Scott	...	A.J.S.	346
29	S. Stubbings	...	Ariel	497

1st..... Speed..... 2nd..... Speed..... 3rd..... Speed.....

At the conclusion of this class the

**SIX FASTEST MOTORCARS**

will be run singly to compete for the cash prize of £100, presented by the BRIGHTON CORPORATION for the fastest time of the day.

**SPECIAL CLASS for Fastest Time of the Day.**

NO. NAME OF ENTRANT MAKE OF CAR C.C. Time Taken

1st..... Speed..... 2nd..... Speed..... 3rd..... Speed.....

# Why not have a NEW Car ?

NO WORRIES. NO REPAIRS. NO DELAYS. TWO YEARS' TROUBLE-FREE MOTORING

## A New 1935 TAXED and INSURED

MORRIS 8, AUSTIN 7, STANDARD 9 from £10

MORRIS 10, AUSTIN 10, WOLSELEY 10 from £20

DOWN, Balance by 12, 18 or 24 MONTHLY PAYMENTS.

Immediate deliveries from Stock.

Any Car accepted in part payment

"USED" CARS SUPPLIED from £5 DOWN. 20 CARS from £5 to £20.

EXCHANGE YOUR CAR FOR A BETTER ONE !!

Any car accepted in part payment. Easy Deferred Terms arranged for Balance.

## EPSOM MOTORS Ltd

MORRIS, AUSTIN, STANDARD, FORD, WOLSELEY, CROSSLEY AGENTS

14, CHURCH STREET, (PHONE 6010) BRIGHTON, 1.

*Church Street runs parallel with North Street, connecting Queen's Road and New Road*

# 1905

The year of the first Speed Trials on Madeira Drive. Maximum Speed by a Motor Car 97.20 m.p.h. by Mr. Clifford Earp (90 h.p. 6-cylinder Napier). By Motorcycle 85.98 m.p.h. by M. Henri Cissac (12 h.p. Peugeot).

# 4868

The 'Phone Number of the Printers of this Programme

# HORTON-STEPHENS

● **PRINTING** of Every Description.

26 CLIFTON TERRACE, BRIGHTON 1

# The Autocar

**The Leading  
Motoring Journal**

Motorists interested in racing on road and track and in other forms of motoring sport will find the week's events vividly described and illustrated in the pages of "THE AUTOCAR."

Other road enthusiasts will appreciate the general motoring news of the week, road tests of all types of cars, articles on touring at Home and on the Continent, hints on care and maintenance, and authentic information on manufacturers' new models.

A fully illustrated account of the Brighton Speed Trials will appear in next week's issue of "THE AUTOCAR."

**EVERY FRIDAY - 4d.**

From all Newsagents and Bookstalls.

Subscription: Home ... £1 6 0; Canada ... £1 8 10  
Other Countries ... £1 15 6, Per Annum, Post Free

ILIFFE & SONS LTD., DORSET HOUSE, STAMFORD STREET, LONDON, S.E.1.

## THE MOTOR CYCLE

*The  
Motor Cyclist's  
Newspaper*

**EVERY  
THURSDAY**

**3d.**

Subscription:

Home and Canada ... 19/6  
Other Countries... ... 23/10  
Per annum. Post Free.

Keen riders read "The Motor Cycle" because of the completeness with which it deals with their favourite pastime. They value it especially for its vividly illustrated reports of all the leading sporting events at Home and on the Continent; its bright articles on touring; its reliable information on the latest models and accessories; and its valuable hints and tips on maintenance.

"The Motor Cycle" has the largest circulation of any journal of its kind and has readers all over the world.

ILIFFE & SONS LTD., DORSET HOUSE, STAMFORD STREET, LONDON, S.E.1.