



PREMIER SERIES

REDMAN  HOMES®



ABOUT US

Redman Homes is one of the oldest and most respected homebuilders in America. Founded in 1937, Redman pioneered factory-built home construction and continues to lead advances in quality control, design and home value today. Through experience and innovation we've harnessed production line efficiency and, paired with our high-quality craftsmanship, created a process that delivers homes that meet our superior standards.

A place to call your own

Beyond just building you a house, we're committed to providing you and your family with a home to make memories in that will last a lifetime. Somewhere you can feel secure. A place you can call your own. A home that fits your lifestyle and has your own personal touch. Whether you're an active young family constantly on the go or empty nesters ready to simplify, just relax – we have a home that's right for you.

More choice, more freedom

Our vast selection of floor plans, color choices and options give you the design choices you want to create a home you'll truly enjoy. Using our online Kitchen Designer, it's easy to create the kitchen of your dreams.

Building the best

We build each and every home to meet or exceed a strict national or state building code, and we set even higher standards for ourselves. Focusing on the things you don't see as well as the things you do, we monitor and inspect our homes at every stage of construction. From the plumbing system to the electrical wiring, from the kitchen cabinets to the closets in the bedrooms – every home we build undergoes rigorous quality inspections to ensure we're providing you with nothing but our best.

The quality you expect

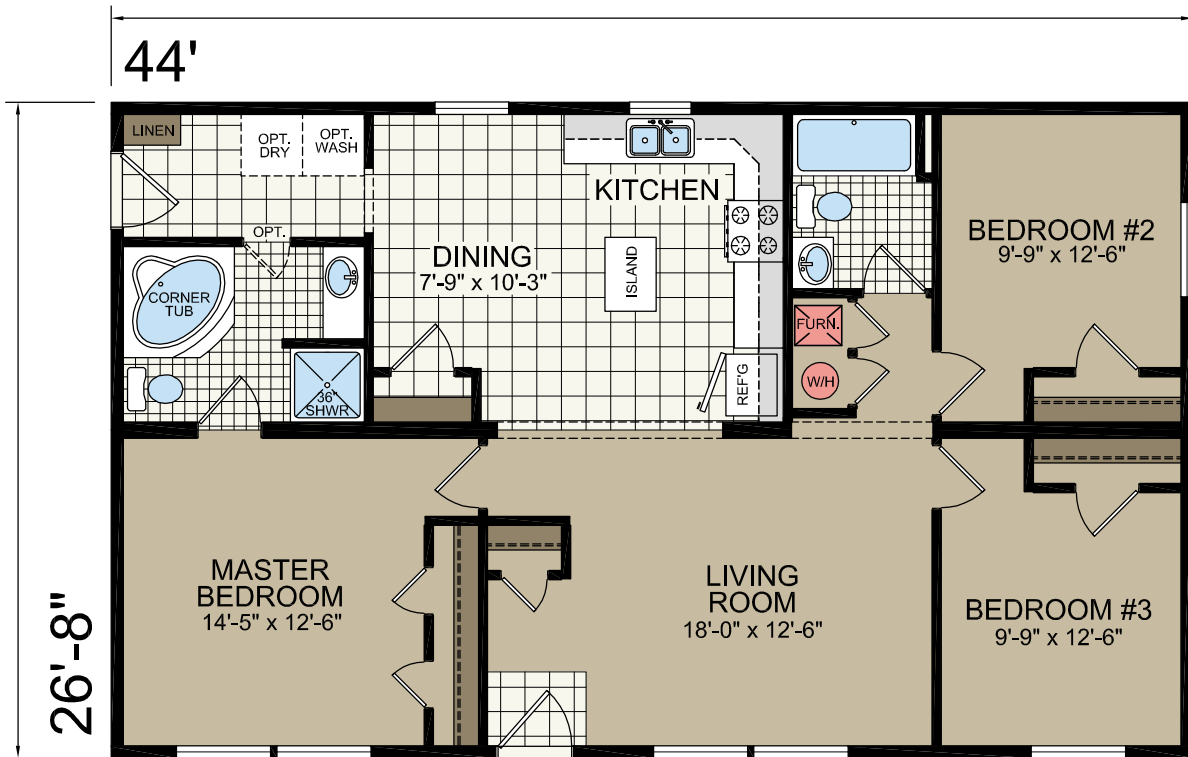
To build the best, we use the best. To meet your expectations of quality - and ours - we use only the highest-quality building materials and trusted national brand names. From insulation and fixtures to flooring and appliances, we only buy components from suppliers who share our commitment to quality. By using the best, we're confident we can build you a home with the lasting value you'll appreciate for years to come. Your housing consultant can tell you more about the specific brands used in our homes.

OAKMONT

MODEL 255
26'-8" x 44'
3 bed-2 bath
1173 sq.ft.



Shown with Optional Exterior

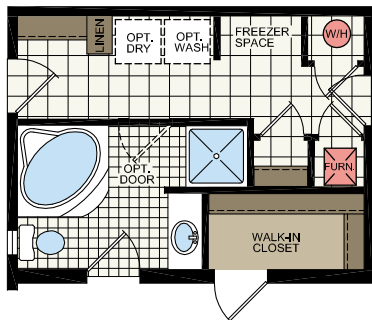


BRIARWOOD

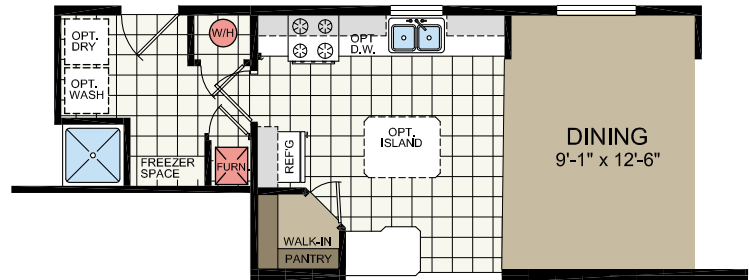
MODEL 256
26'-8" x 56'
3 bed-2 bath
1493 sq.ft.



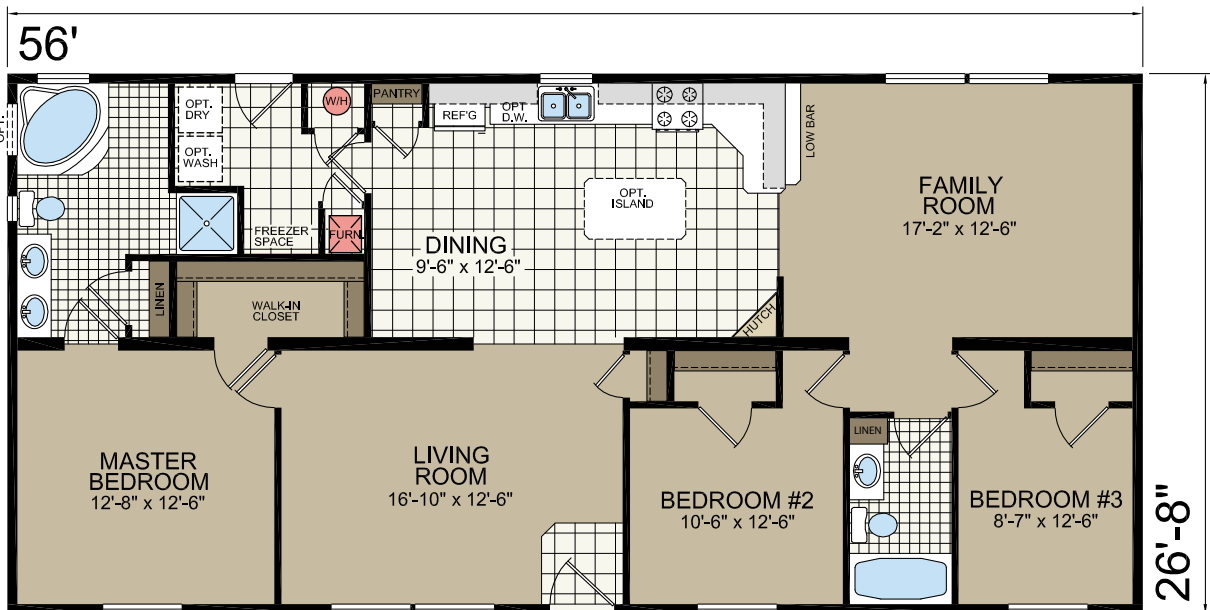
Shown with Optional Exterior



OPTIONAL MASTER BATH WITH REAR ENTRY



OPTIONAL KITCHEN AND DINING AREA

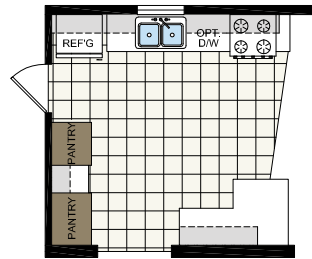


AVALON

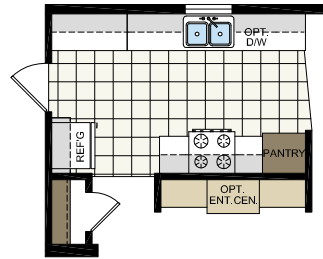
MODEL 856
26'-8" x 56'
3 bed-2 bath
1493 sq.ft.



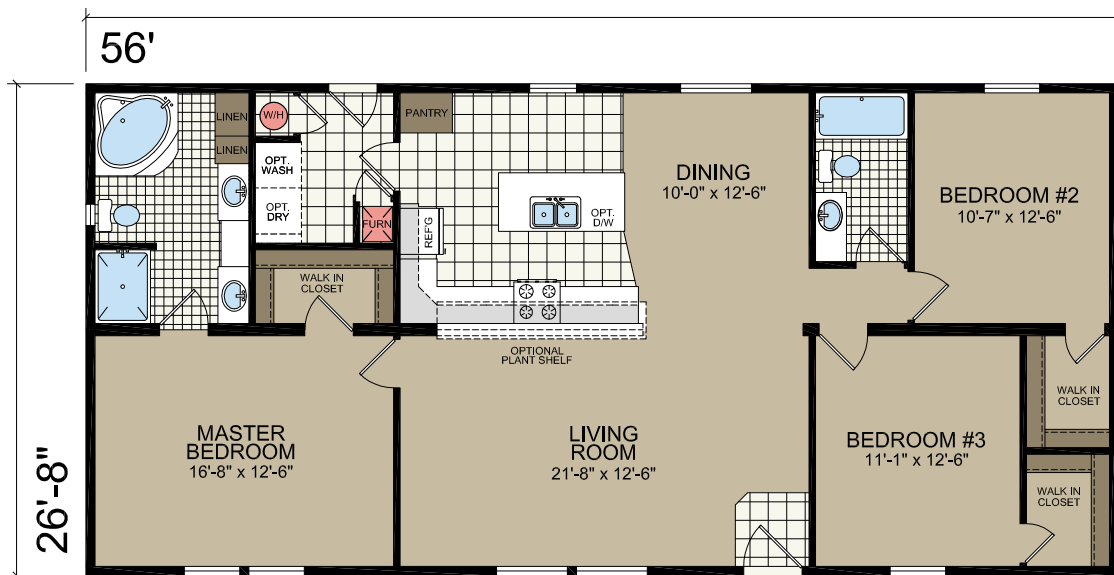
Shown with Optional Exterior



OPTIONAL KITCHEN #1



OPTIONAL KITCHEN #2

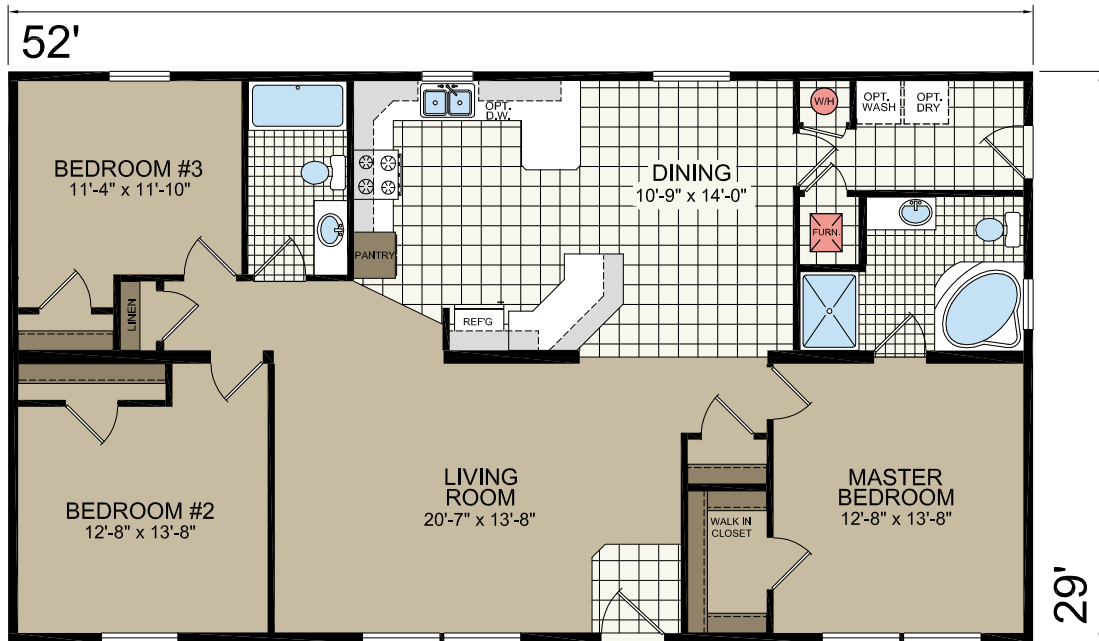


PARKVIEW

MODEL 840
29' x 52'
3 bed-2 bath
1508 sq.ft.



Shown with Optional Exterior

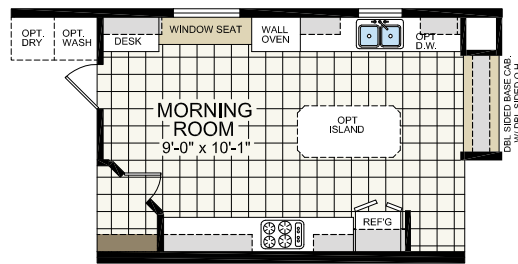


OAKDALE

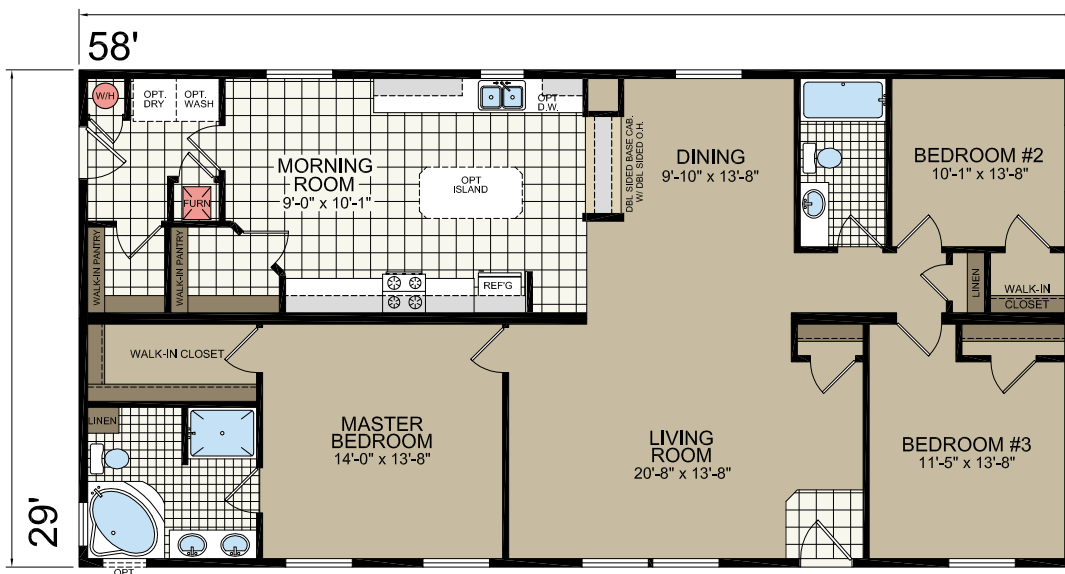
MODEL 140
29' x 58'
3 bed-2 bath
1682 sq.ft.



Shown with Optional Exterior



OPT. ULTIMATE KITCHEN

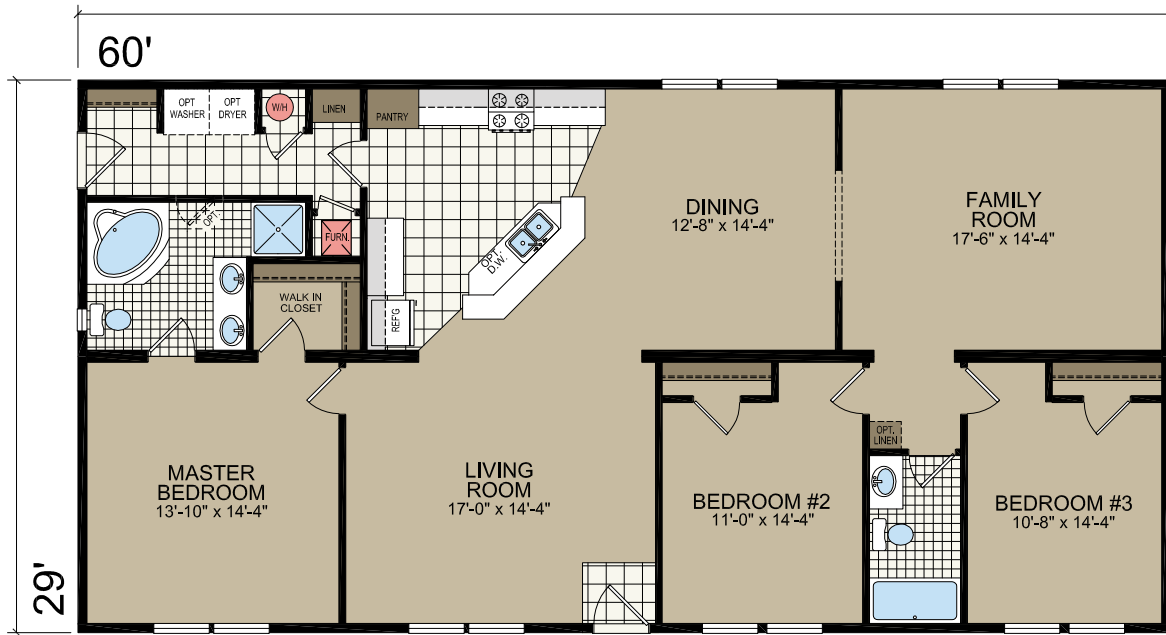


GLENWOOD

MODEL 884
29' x 60'
3 bed-2 bath
1740 sq. ft.



Shown with Optional Exterior

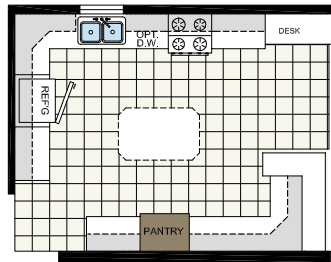


AUBURN

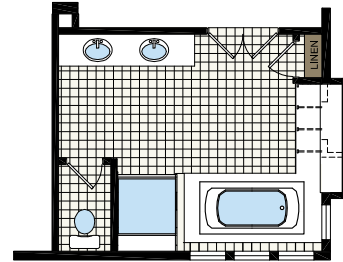
MODEL 870
29' x 64'
3 bed-2 bath
1856 sq.ft.



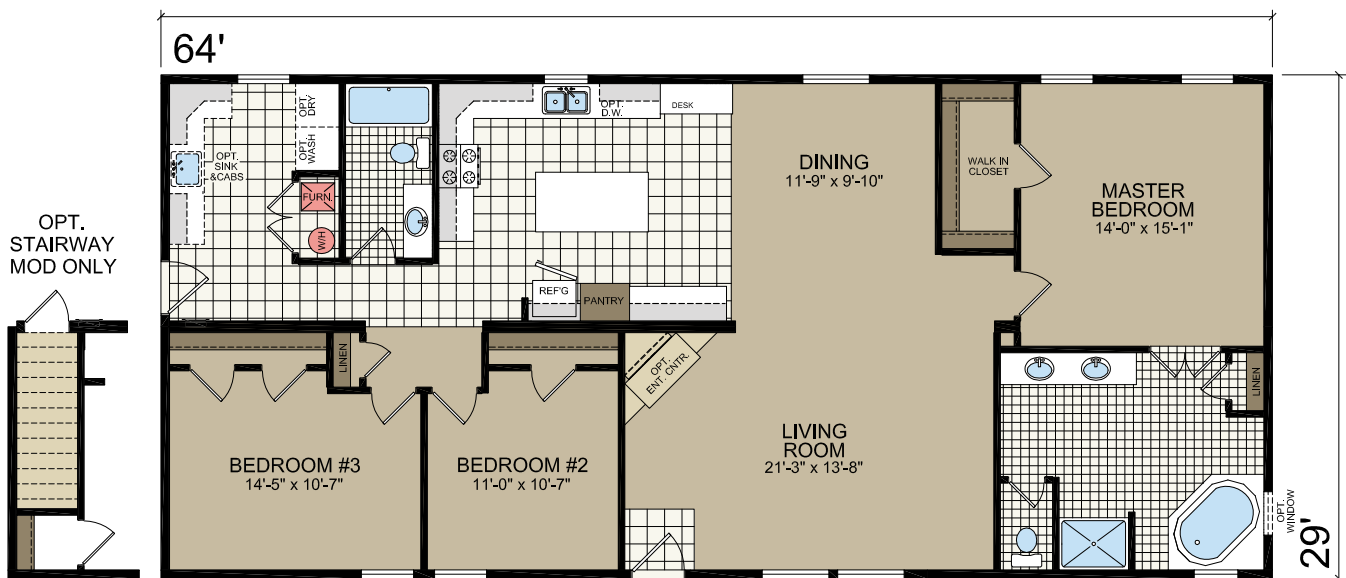
Shown with Optional Exterior



OPT. KITCHEN



OPT. SUITE RETREAT

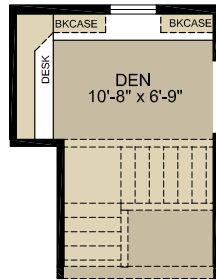


PONDEROSA

MODEL 877
29' x 64'
3 bed-2 bath
1856 sq.ft.

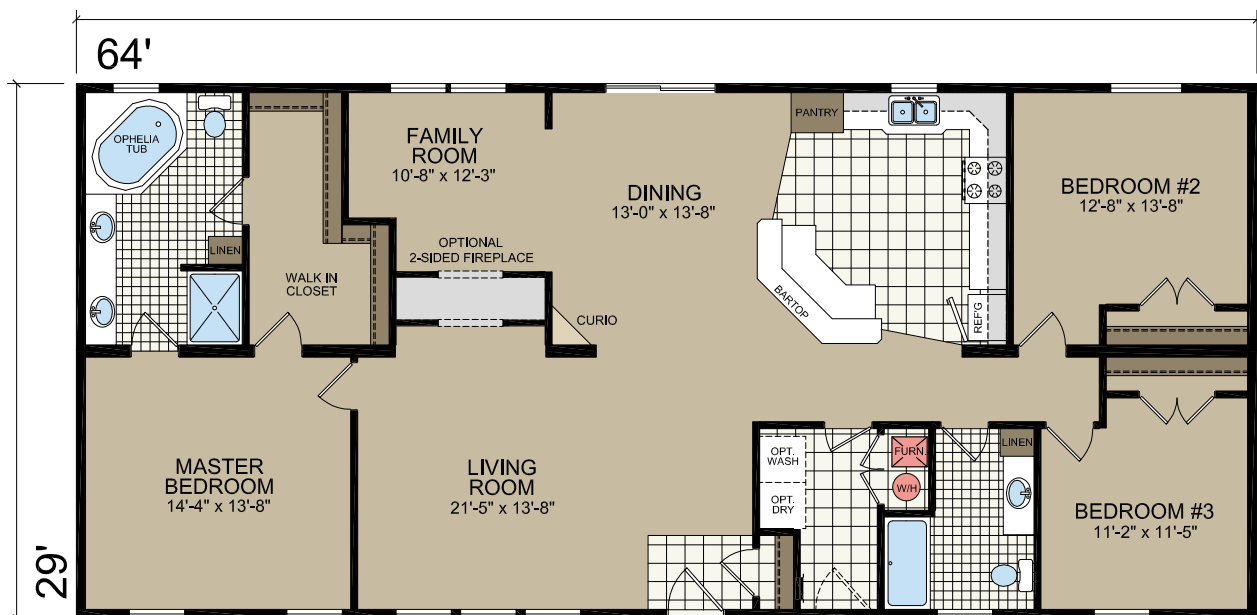


Shown with Optional Exterior
 Garage Built On-site by Others



OPTIONAL DEN WITH
 BOOKCASES AND DESK

OPTIONAL STAIRWAY
 MOD ONLY

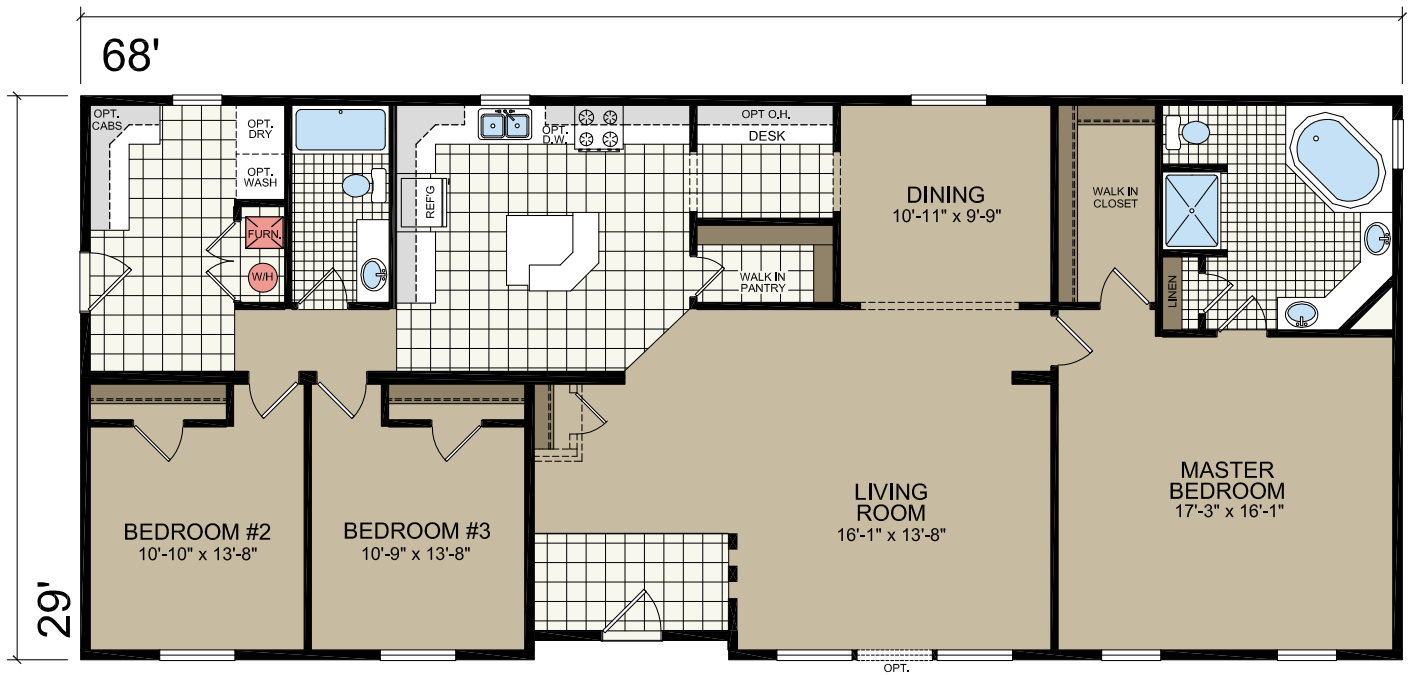


HUNTINGTON

MODEL 887
29' x 68'
3 bed-2 bath
1962 sq.ft.



Shown with Optional Exterior

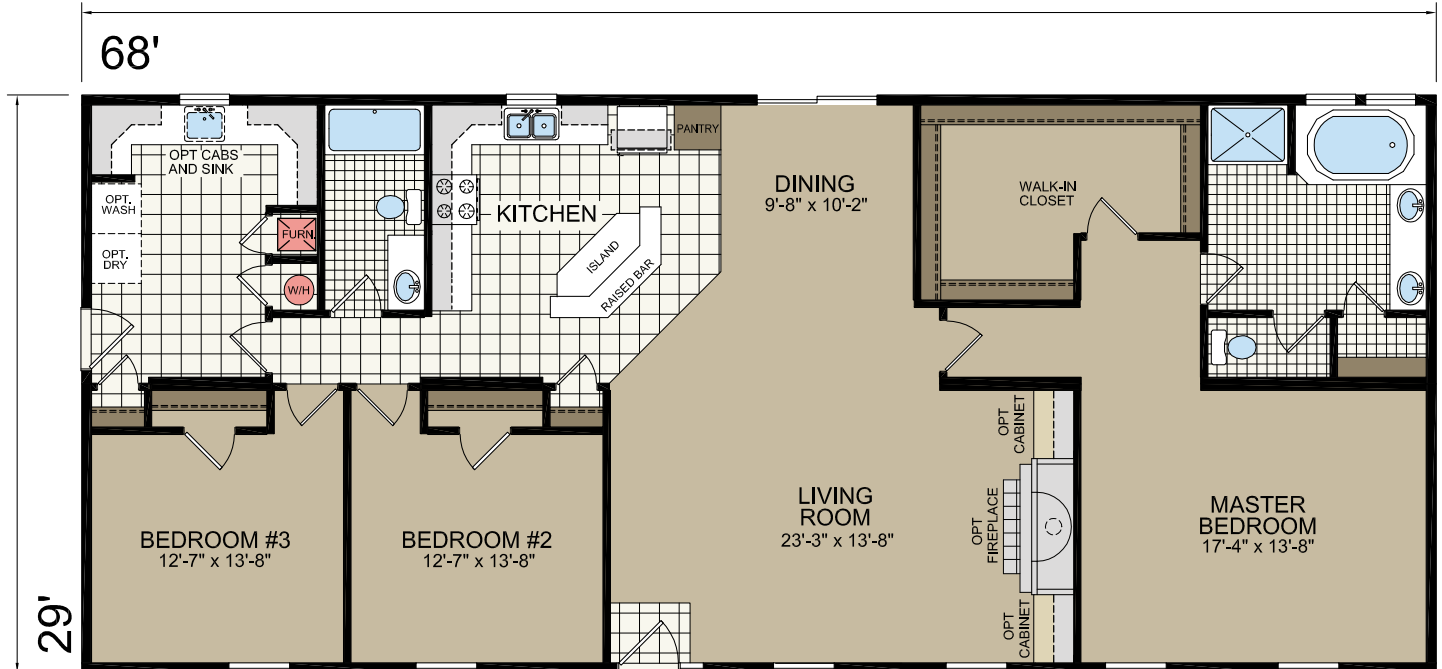


RIDGELINE

MODEL 869
29' x 68'
3 bed-2 bath
1972 sq.ft.



Shown with Optional Exterior

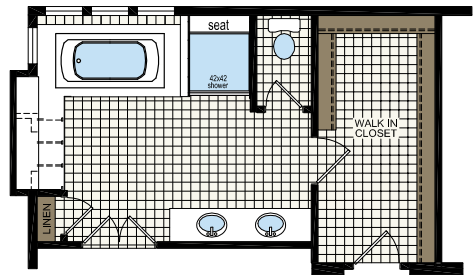


ALPINE

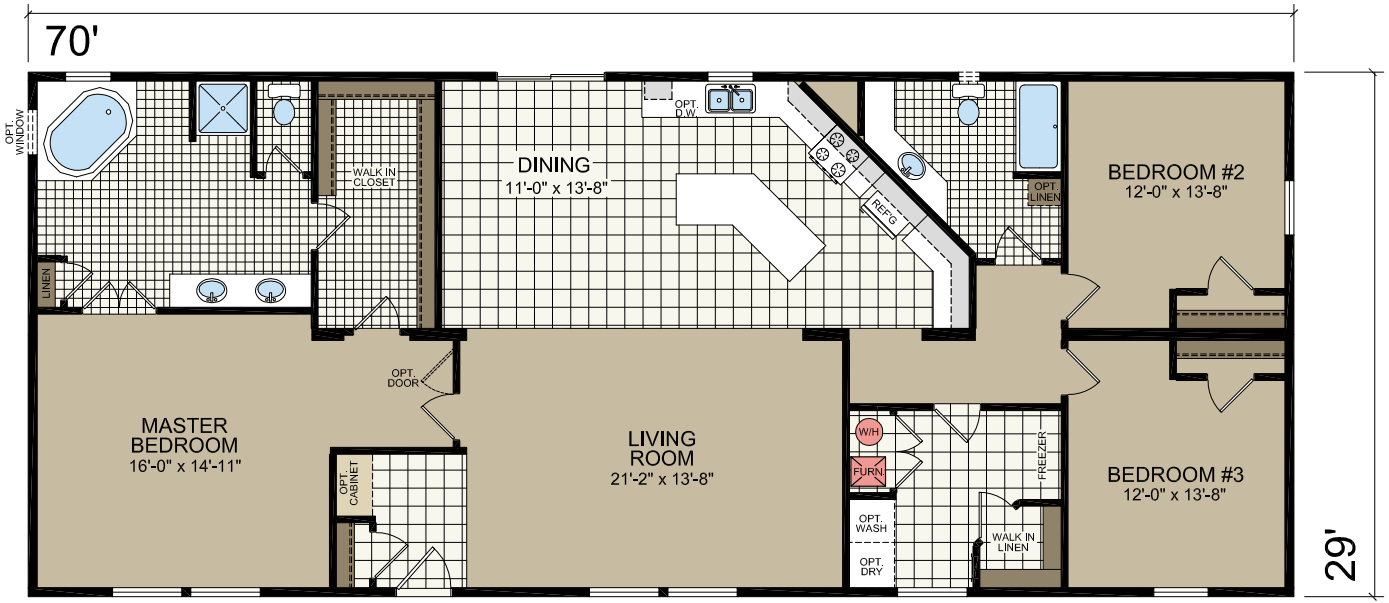
MODEL 853
29' x 70'
3 bed-2 bath
2030 sq.ft.



Shown with Optional Exterior



OPT. SUITE RETREAT

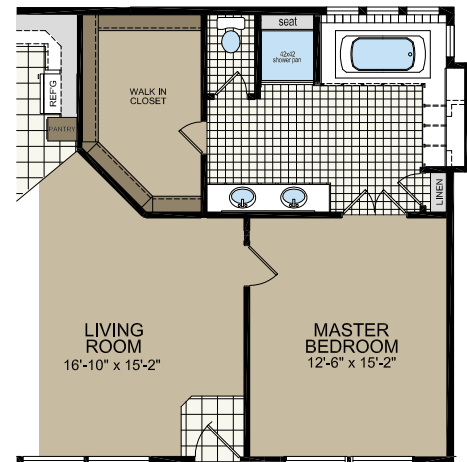
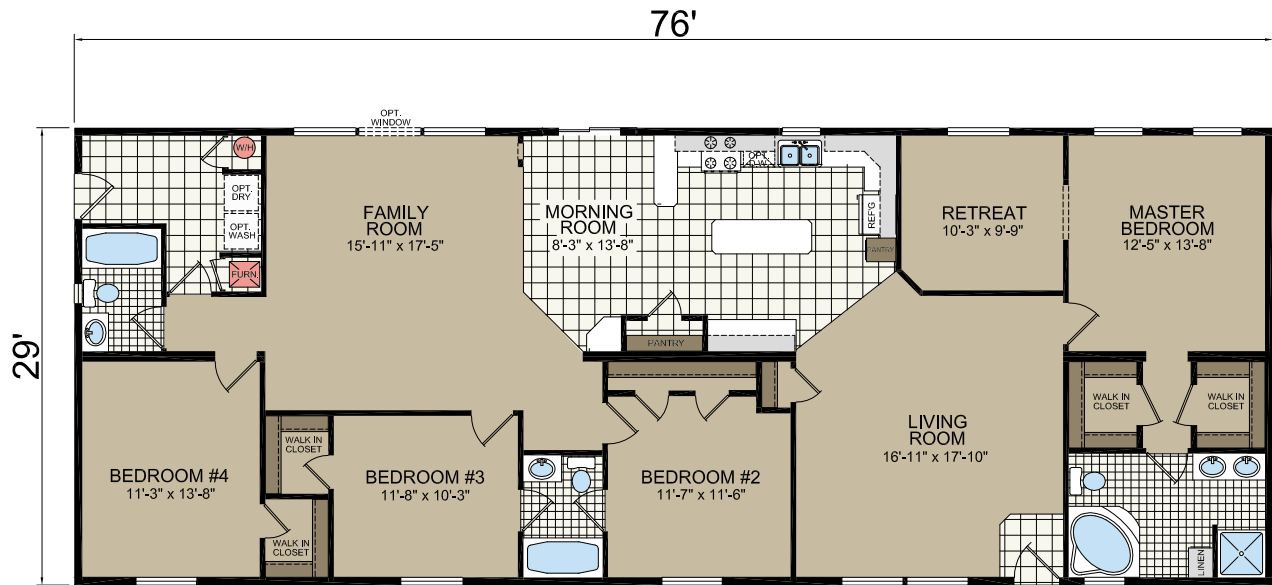


REGENCY

MODEL 834
 29' x 76'
 4 bed-3 bath
 2204 sq.ft.



Shown with Optional Exterior



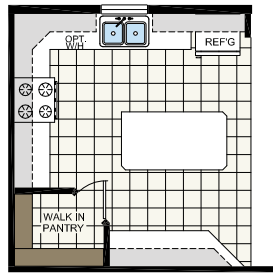
OPT. SUITE RETREAT

ABERDEEN

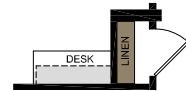
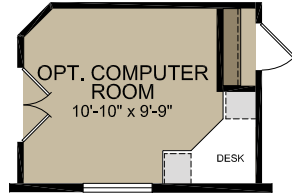
MODEL 846
29' x 76'
4 bed-2 bath
2204 sq.ft.



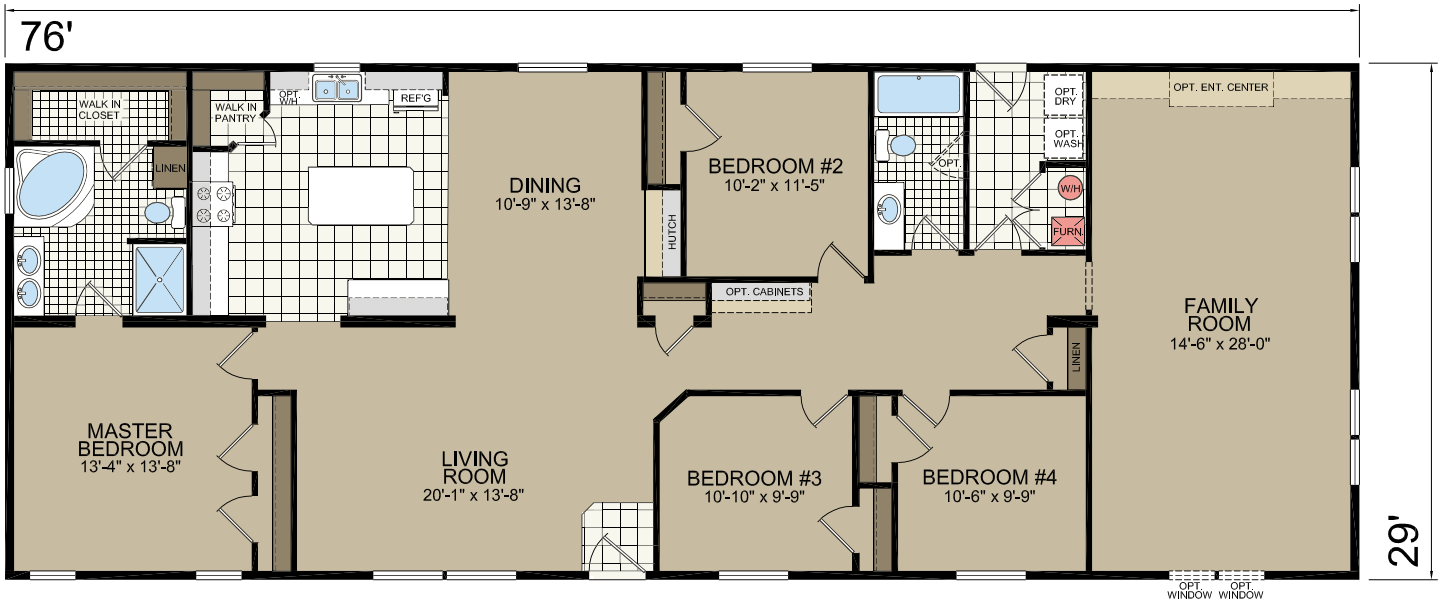
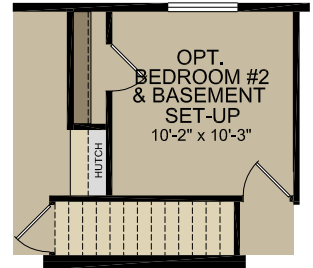
Shown with Optional Exterior



OPT. KITCHEN



OPT. HALL DESK

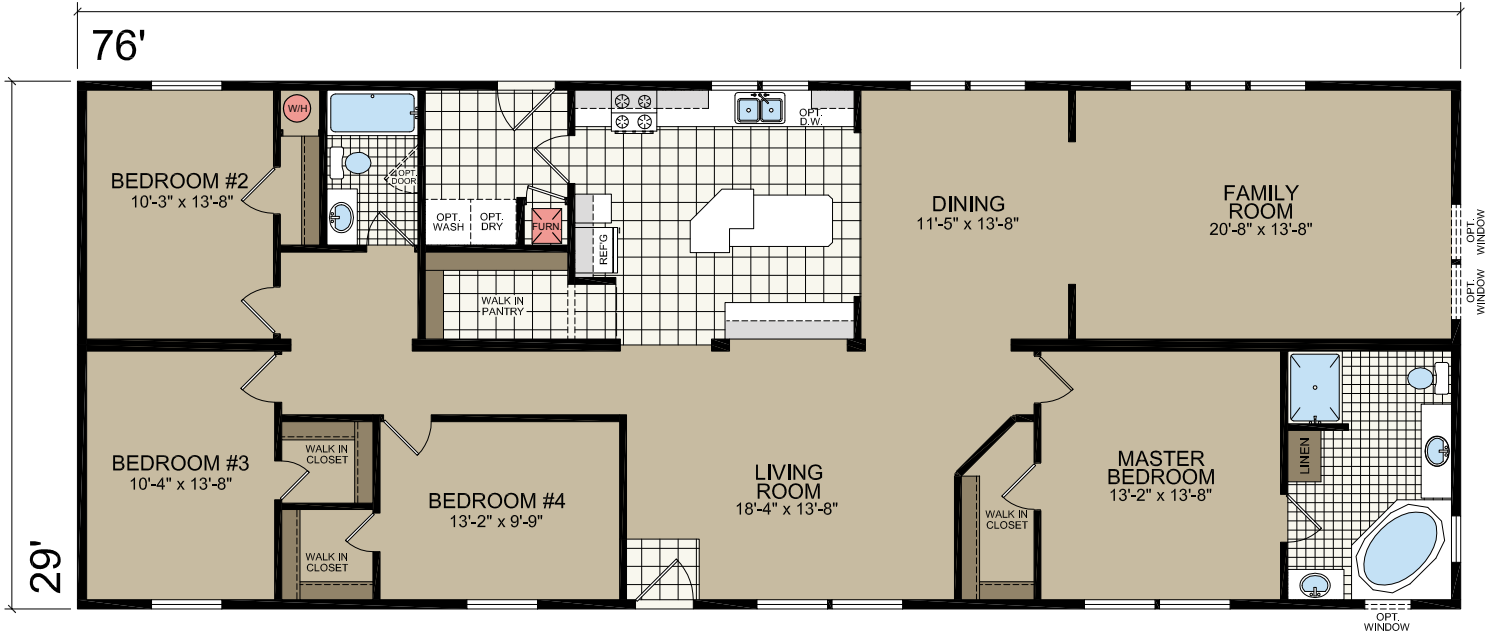


CAMELOT

MODEL 882
29' x 76'
4 bed-2 bath
2204 sq.ft.



Shown with Optional Exterior



PREMIER MULTI-SECTION HUD STANDARDS

GENERAL CONSTRUCTION

- * 16" Overhang
- * Vinyl Siding with 7/16" OSB
- * Vinyl Shutters (front & hitch end)
- * 40 lb. Rood Load
- * Asphalt Shingled Roof
- * Dual Pane Vinyl Windows
- * LP® SmartSide Trim, Fascia & Soffit
- * 36"x 80" Steel Front Door
- * 36"x 80" Steel Rear Door
- * Light at All Exterior Doors
- * Dormer (varies per plan)
- * 8' Flat Ceiling Throughout
- * R30 Ceiling Insulation
- * R21 Exterior Wall Insulation
- * R22 Floor Insulation
- * 2x4 - 24" O.C. Interior Walls
- * 1 - Exterior GFI Receptacle
- * 2x6 Floor Joists 16" O.C. (26'8" wides)
- * 2x8 Floor Joists 16" O.C. (29' wides)
- * Perimeter Floor Mounted Heat Registers
- * In-floor Heat Duct Crossovers

INTERIOR

- * 16" x 16" Hand Laid Linoleum (Entry, Kitchen, Utility & Baths)
- * Simply Stated Carpet with Rebond Pad
- * Residential Trim Throughout
- * 80" Flat Interior Passage Doors
- * Decorative Glass Cabinet Doors (per print)
- * Mortised Interior Door Hinges
- * Floor Mounted Door Stops
- * 1/2" Drywall on Walls with Orange Peel Finish
- * 5/8" Ceiling Drywall with Orange Peel Finish
- * Chandelier in Dining Room
- * Breakfast Nook/Morning Room Fixture (per print)
- * Switched Light in Walk-In Closets
- * Smoke Detector(s) (per print)
- * Carbon Monoxide Detector (per state code)
- * Water Shut-Off Valves Throughout
- * Wire Shelving in Guest Closets & Pantries
- * Single Wire Shelf & Rod in Bedroom Closets
- * Drapery & Valance on Living & Dining Room Windows
- * Valances on All Bedroom Windows
- * Mini-Blinds on All Windows Except Bathrooms

KITCHEN

- * 17 Cubic Foot Frost-Free Refrigerator
- * 30" Gas Range
- * 30" Power Range Hood with Light
- * Stainless Steel Double-Bowl Sink
- * MDF Windsor Oak Cabinet Doors & Stiles
- * Center Shelf in Base Cabinets
- * Lined Overhead & Base Cabinets
- * Laminate Backsplash & Oak Edge
- * 30" Overhead Cabinets
- * Drawer Over Door Cabinet Design
- * Brushed Nickel Cabinet Hardware
- * Metal Drawer Guides
- * Brushed Nickel Cabinet Door Hinges
- * Lazy Susan (per print)
- * Receptacles Above Counters are GFI Protected

UTILITY

- * 100 Amp Electric Panel
- * 12-2 Wiring
- * Plumb for Washer & Wire for Dryer
- * 40-Gallon Electric Water Heater
- * 3/4" Main Water Shut-Off Valve
- * Gas Furnace with Auto Ignition

BATHROOM

- * 60" Tub with 1-Piece Liner (per print)
- * 1-Piece Fiberglass Shower Sized (per print)
- * Oversized Tub in Master Bath (per print)
- * Laminate Backsplash & Oak Edge
- * Shower Curtain & Decorative Valance with Rod
- * Light Over Vanity Mirror in Master & Guest Bath
- * Bath Vent Fan with Light
- * Towel & Tissue Holder
- * Dual Knob Faucets
- * Tub Overflow
- * Acrylic Sink(s)

Due to continuous product development and improvement, prices, specifications, and materials are subject to change without notice or obligation. Square footage and other dimensions are approximate. Exterior images may be artist renderings and are not intended to be an accurate representation of the home. Renderings, photos and floor plans may be shown with optional features or third-party additions.

PREMIER IRC MODULAR STANDARDS

GENERAL CONSTRUCTION

- * 16" Overhang
- * Vinyl Siding with 7/16" OSB
- * Vinyl Shutters (front & hitch end)
- * House Wrap
- * 40 lb. Roof Load with 5/12 Pitch
- * Architectural Shingles
- * Dual Pane Vinyl Windows
- * LP® SmartSide Fascia, Trim & Soffit
- * 36"x 80" Steel Front Door
- * 36"x 80" Steel Rear Door
- * Light at All Exterior Doors
- * Dormer (varies per plan)
- * 8' Flat Ceiling Throughout
- * R38 Ceiling Insulation
- * R21 Exterior Wall Insulation
- * R21 Perimeter Floor Insulation
- * 2x10 Floor Joists - 16" O.C.
- * 2x10 Double Perimeter Rim Joist
- * Double 2x6 Top Plate & Single 2x6 Bottom Plate
- * Triple 2x6 Window & Door Headers with Jack Studs
- * 2x4 - 16" O.C. Interior Walls
- * 2 - Exterior GFI Receptacles
- * 1 - Exterior Frost-Free Faucet
- * Perimeter Floor Mounted Heat Registers
- * In-floor Heat Duct Crossovers

INTERIOR

- * 16" x 16" Hand Laid Linoleum (Entry, Kitchen, Utility & Baths)
- * Simply Stated Carpet with Rebond Pad
- * Residential Trim Throughout
- * 80" Flat Interior Passage Doors
- * Decorative Glass Cabinet Doors (per print)
- * Mortised Interior Door Hinges
- * Floor Mounted Door Stops
- * 1/2" Drywall on Walls with Orange Peel Finish
- * 5/8" Drywall on Ceiling with Orange Peel Finish
- * Chandelier in Dining Room
- * Breakfast Nook/ Morning Room Fixture (per print)
- * Switched Light in Walk-In Closets
- * Smoke Detector(s) (per print)
- * Carbon Monoxide Detector (per state code)
- * Water Shut-Off Valves Throughout
- * Wire Shelving in Guest Closets & Pantries
- * Single Wire Shelf & Rod in Bedroom Closets
- * Drapery & Valance on Living & Dining Room Windows
- * Valances on All Bedroom Windows
- * Mini-Blinds on All Windows Except Bathrooms

KITCHEN

- * 17 Cubic Foot Frost-Free Refrigerator
- * 30" Gas Range
- * 30" Power Range Hood with Light
- * Stainless Steel Double-Bowl Sink
- * MDF Windsor Oak Cabinet Doors & Stiles
- * Center Shelf in Base Cabinets
- * Lined Overhead & Base Cabinets
- * Laminate Backsplash & Oak Edge
- * 30" Overhead Cabinets
- * Drawer Over Door Cabinet Design
- * Brushed Nickel Cabinet Hardware
- * Metal Drawer Guides
- * Brushed Nickel Cabinet Door Hinges
- * Lazy Susan (per print)
- * Receptacles Above Counters are GFI Protected

UTILITY

- * 200 (40/40) Amp Long Box Electric Panel
- * 12-2 Wiring
- * Plumb for Washer & Wire for Dryer
- * 40-Gallon Electric Water Heater
- * 3/4" Main Water Shut-Off Valve
- * Gas Furnace with Auto Ignition
- * Digital Thermostat

BATHROOM

- * 60" Tub with 1-Piece Liner (per print)
- * 1-Piece Fiberglass Shower Sized (per print)
- * Oversized Tub in Master Bath (per print)
- * Laminate Backsplash & Oak Edge
- * Shower Curtain & Decorative Valance with Rod
- * Light Over Vanity Mirror in Master & Guest Bath
- * Bath Vent Fan with Light
- * Towel & Tissue Holder
- * Dual Knob Faucets
- * Tub Overflow
- * Acrylic Sink(s)
- * Anti-Scald Faucets on All Tubs & Showers

MAKE YOURSELF AT HOME WITH REDMAN HOMES

Redman tradition, Redman value

It's finding a home you can feel proud to call your own. It's design choices that perfectly match your need for space and comfort and frees you to express them in your own way. It's award-winning design and craftsmanship with impeccable attention to detail. It's a commitment to providing you with the style and features you'll enjoy for years to come. It's combining everything you would want in a home with surprising affordability.

And it's all yours from Redman Homes.





3200 Enterprise Avenue
York, NE 68467

www.redmanhomesyork.com

CHAMPION®

MANUFACTURED BEAUTIFULLY™