

FAT CANARY JOURNAL

August 2019

ALIX MOREL
www.AlixMorel.com



On the Edge #7, oil on canvas, 2019, 51x 31cm

In her book *Seeing Ourselves: Women's Self-Portraits*, Frances Borzello examines women's use of self-portraiture as a way and means to legitimize their work and establish their place in the creative community. In fact, there is a long history to draw from: Sofonisba Anguissola's *Self-portrait at the Easel*, Alice Neel's rare, nude *Self Portrait* at eighty years old, and Frida Kahlo's

surrealistic use of her own image to depict an inner dreamscape are just a few. We can see this path taken by contemporary artists as well.

This August, the Fat Canary Journal celebrates the work of French artist Alix Morel and her large-scale, monochromatic, psychological paintings. Pensive and delicately done, Morel continues this tradition using her own image to convey and understand her own universal emotions and sensations.

STATEMENT

As an artist, I feel I belong to a world of emotions and aesthetics.

After having graduated from Amiens University Of Fine-Arts, I studied in L'Aquila Academy of Fine-Arts, Italy.



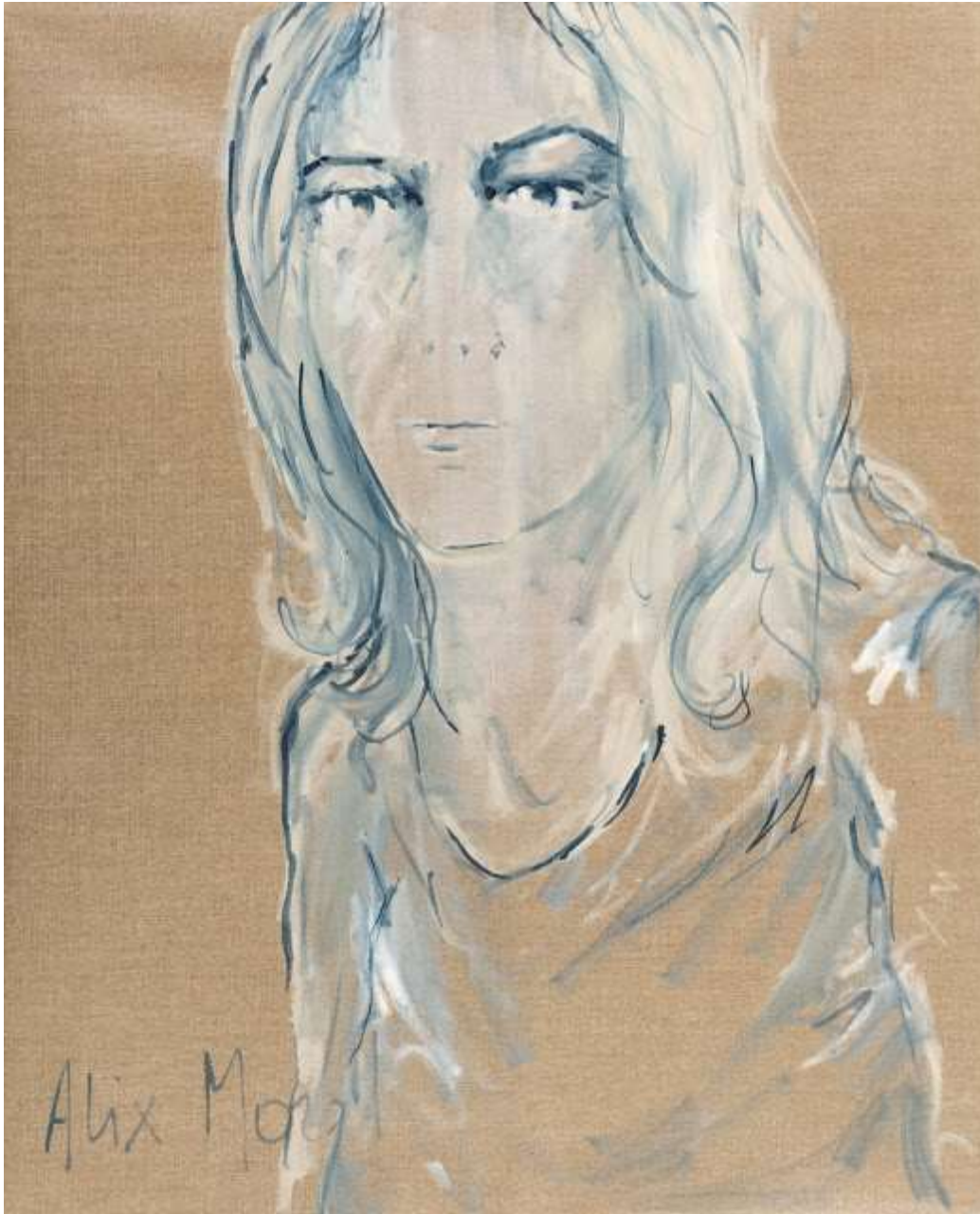
Making Sense #4, oil on canvas, 2019, 81 x 54 cm

Ever since I was a child, Italian Renaissance and Baroque artists have fascinated me. Later, during my travels to Italy, I had the privilege to study fifteenth through seventeenth century artists.



On the Edge #12, oil on canvas, 2019, 81 x 65 cm

This rich and fascinating period in history is a constant reference in my work as well as in my research about colors, compositions and design.



On the Edge #9, oil on canvas, 2019, 81 x 65 cm

As a female and as an artist, I am deeply connected to those who surround me, especially to those who feel sympathy and concern for the human race. In this respect, and as a matter of consequence, my paintings deal with my own introspection, compassion and humanity as it echoes through my life.

The “Making Sense” series concerns the development of feelings and emotions we all experience. As a creative person, I am particularly sensitive to this sensation.



On the Edge #10, oil on canvas, 2019, 81 x 65 cm

The “On The Edge” addresses those fleeting and ephemeral moments. These are inspired by those times when we are perched on the edge, determining the tipping point of our life.

EXHIBITIONS & RESIDENCIES

2019 - Société des Artistes Indépendants, 피카딜리 Museum, Seoul, South Koréa.

2019 - Salon ART CAPITAL, Grand Palais, Paris.

2019 - Personal exhibition, Château de Chassagne-Montrachet, Bourgogne, France.

2018 - Collective exhibition and residency at the Arte Studio Ginestrelle, Galleria delle Logge, Assisi, Italy



Making Sense #8 (above) #9 (below), oil on canvas, 2019 130 x 81cm



2018 - In the Cradle of Impressionism painting Festival, collective exhibition, Normandy, France.

2018 - [Scrutinising-Contemplating], personal exhibition, Belval Abbaye, Troisvaux, France

2018 - BERGAM Galerie, collective exhibition, Amiens, France

2017 - Cross culture festival, collective exhibition under the patronage of UNESCO, Normandy, France.



On the Edge #11, oil on canvas, 2019, 81 x 65 cm

2017 - Before summer..., collective exhibition, BERGAM Galerie, Amiens, France

2017 - Utopias, personal exhibition. Residency at Fienile Fluò, collaboration with Crexida, theatre company, Bologna, Italy.

2016 - BERGAM Galerie, Amiens, France.

2016 - Intersecting views, personal exhibition 3EBC, Le-Touquet-Paris-Plage, France.

2016 - Galerie Claude Jacques, Amiens, France.

2015 - The studio of the artist, personal exhibition, Centre d'art Léo Lagrange, Amiens, France



On the Edge #13, oil on canvas, 2019, 81x 65cm

- 2015 - The colours of our souls, collective exhibition, 3EBC, Le-Touquet-Paris-Plage, France.
- 2013 - Views from Rome, personal exhibition, Palazzo San Luigi dei francesi, Rome, Italy
- 2009 -Art and events, collective exhibition, Camille Claudel Exhibition space, Amiens, France
- 2006 - Movements, collective exhibition, San Francesco exhibition space, L'Aquila, Italy.



On the Edge #14, oil on canvas, 2019, 130 x 81 cm