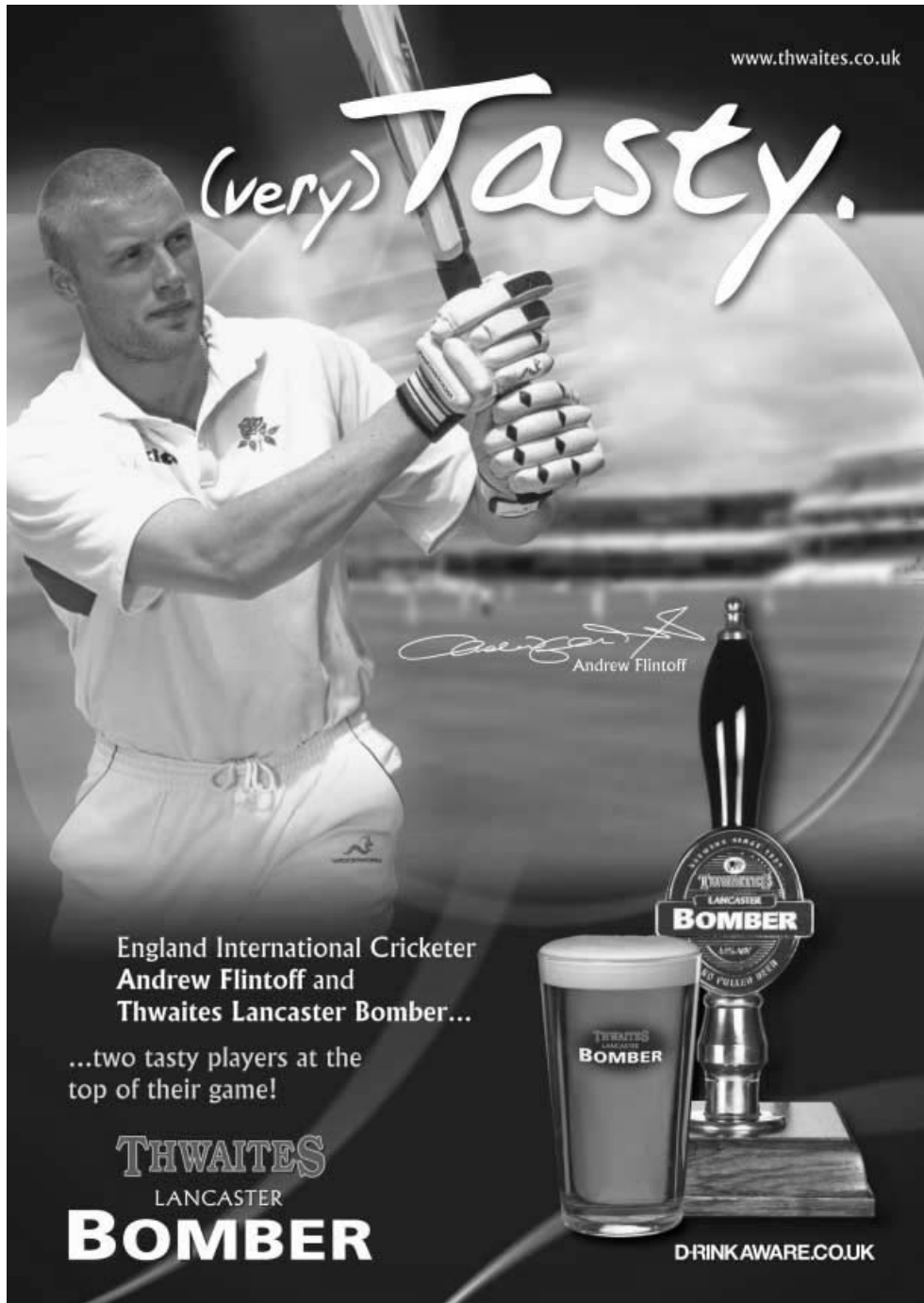


www.thwaites.co.uk

(very) Tasty.



Andrew Flintoff
Andrew Flintoff

England International Cricketer
Andrew Flintoff and
Thwaites Lancaster Bomber...

...two tasty players at the
top of their game!

THWAITES
LANCASTER
BOMBER

DRINKAWARE.CO.UK

Newsletter From The Barnsley Branch Of The Campaign For Real Ale.



CAMPAIGN
FOR
REAL ALE

THE BAR FREE

Barnsley Ale Report

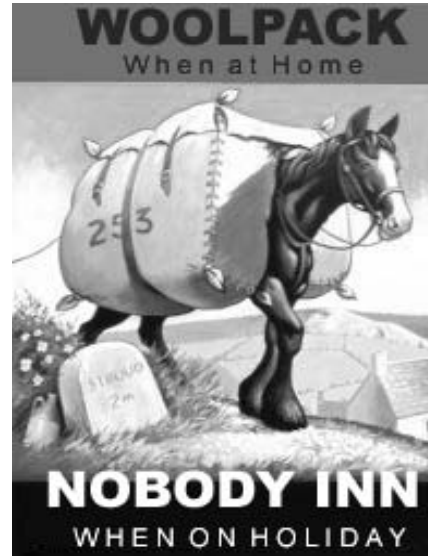
April May 2006

www.yourpint.com

2000 copies circulated to over 120 outlets



Pubs are being forced to close their doors when over-zealous police and council officials discover there is no qualified licensee on the premises, it was reported in the Morning Advertiser.



A pub in Barnsley closed because no personal licence holder was on site. Phil and Tracy Elrington were away in Spain when told their pub the Mount, Barnsley had been closed. An experienced relief manager was left in charge but police told him he was not qualified and ordered the pub to close immediately. The police insisted a personal licence holder had to be present. This must fly in the face of Licensing Act guidance issued by the Department for Culture, Media & Sport? Officers told licensees they were carrying out South Yorkshire Police policy. Dennis Griffiths, at Miners Rest, Old Town, was told by police to cancel his holiday if he did not put a personal licence holder in charge. Federation of Licensed Victuallers Association's chief executive Tony Payne said "My advice to any licensee leaving his pub for a holiday or for any length of time is to leave written delegated authority naming all persons who will be selling alcohol,"

INSIDE THIS ISSUE OF THE BAR

Spring Pub of the Season	3	CAMRA Charity - Pathways Centre	13
Pub and Club News	5	Brewery News	15
Have a Mild This May	7	Great British Beer Festival	15
Away Ales - April May	9	Award Winning Ales	20
Lyn in the Kitch' In	11	Social Events Calendar	27

Travellers Rest - Intake Lane - Pogmoor : Morning Star - Dobie Street - Barnsley

Terry Welcomes You To...

The Travellers Rest



A Traditional Pub
Welcoming all generations... young and old to a warm and inviting atmosphere with friendly bar staff and a warm friendly environment for all

Intake Lane, Pogmoor, Barnsley

Two Real Ales

Thwaites Lancaster Bomber plus a changing seasonal beer

Fully Refurbished No Smoking Dining Area and Function Room

Disabled Access and Facilities

New Home Cooked Menu

Food served all day

Open 12 noon to 11pm Daily

Tel. 01226 281440

THE ROYAL ALBERT

Tel. 01226 742193

Blacker Hill, Barnsley



**Open Mon to Thurs 3pm to 11.30pm;
Fri & Sat 3pm to 1pm; Sun 12 till 11pm**

John, Angie and Simon welcome you all to this excellent example of a popular village local, offering up to three changing beers, two Wentworth beers and a guest beer from another micro-brewery.

Featuring a cosy wood panelled snug, popular tap and games room. A meeting room is also available.



SOCIAL EVENTS CALENDAR

Contact details on page 26

Sunday 2nd April

The ever popular trip to Hull but this time we are off out on a Sunday, Departing the George and Dragon, Summer Lane at 12noon. We plan to leave Hull at 6.30pm with a halfway home stop. Back in Barnsley for 9pm ish. Book Now.

Saturday 8th Sunday 9th April

CAMRA AGM and members weekend at Blackpool, Winter Gardens. Starts 9am each day.

Wednesday 12th April

Survey social of Carlton and Monk Bretton, Starting at the Wharnclyff Arms, Carlton at 7.45pm. Catch the 7.30pm number 59 bus from Barnsley.

Saturday 22nd April

Brewery visit to E&S Elland Brewery. Elland. Meeting at Barnsley rail station at 9.50am for the 10.01am train to Huddersfield.

Tuesday 25th April

Branch meeting and social at Norman Inn, Monk Bretton. Starting at 8pm, catch the 7.30pm number 59 bus from Barnsley.

Wednesday 3rd May

Pub of Season presentation to Darfield Cricket Club. (Full details on page 3)

Saturday 6th May

National Mild Day. We are looking at visiting pubs around Barnsley looking to drink Mild. Meeting up at the Gatehouse, Eldon Street, Barnsley at 12noon. Then just making it up from there.

Tuesday 23rd May

The BAR distribution social, pick up your copies from the Gatehouse, Barnsley at 8pm. Please note new venue.

Saturday 27th May

Our first fund raising event for Pathways. BBQ, and Fun Quiz at the Moulders Arms, Summer Street, Barnsley. BBQ light up around 5.30pm. Remember this won't be mastermind, the whole quiz and evening will be fun. Bring all your loose change...

Tuesday 30th May

Branch meeting and social at the Royal Albert, Blacker Hill. You can catch the 6.45pm number 39 bus direct, this gets you to the pub at 7.25 for the meeting at 8pm.

The new Interchange is now well into phase two, they have demolished the bus stations and now have people getting off buses in the mud at the interim station where most buses will leave from until mid 2007. Times were correct when going to print but no doubt will change within a few weeks of the BAR going to print, as usual...

Call Traveline on 01709 515151 before heading out.
Margaret Craft

The Bar is produced by the Barnsley Branch of the Campaign for Real Ale. The views expressed are those of the individual authors and may not be those of the editor or those of CAMRA either locally or nationally. The editor acknowledges material supplied by other CAMRA publications and welcomes comments or articles for inclusion and these should be sent to the address on the previous page. For advertising and distribution information please contact Margaret via contact information on previous page.

The BAR is printed in English only, PDF format is available and is now the large print version at www.yourpint.com this can be translated into other languages. Software to make the translation is not provided by CAMRA Ltd or the editor.

© The contents of this newsletter are copyright CAMRA Ltd, 230 Hatfield Road St Albans, Herts, AL1 4LW. Reproduction of articles is permitted as long as the source is clearly acknowledged. Printed by SPC Ltd, Caxton House, Sheffield S4 8LU Tel. 0114 242 5530



THE HILLSBOROUGH HOTEL

54-58 LANGSETT ROAD,
SHEFFIELD S6 2UB

Visit us and sample a wide range of hand-crafted and rare beers from our own and other guest micro-breweries
Our strong beers are available by the bottle

OPEN: 6 - 11pm Tuesday and Wednesday

4.30 - 11pm Thursday - Saturday

And 6 - 10.30pm Sunday

Largely non-smoking - designated smoking area
Tram stop close by is Langsett / Primrose View on the Blue or Yellow route for Hillsborough

Visit our website: www.edalebrewery.co.uk

Tel: 0114 232 2100 Fax: 0114 220 0500 E-mail: info@edalebrewery.co.uk

BRANCH OFFICERS

Chair and Acom Brewery
Liaison Officer
Eric Gilbert
(O2 mobile) 07742 169917

Secretary, BAR Editor and Webmaster
Nigel Croft
(O2 mobile) 07736 288072
01226 207858
camra@yourpint.com
24 Cope Street, Barnsley S70 4HX

Treasurer
Laurence Mace
(O2 mobile) 07752 399182
4 Darley Cliff Cottages, Worsbrough,
Barnsley S70 4AJ

Membership, Social Secretary and
BAR Advertising
Margaret Croft
(O2 mobile) 07734 155792
01226 714492
Margaret@yourpint.com
8 Newtown Ave, Cudworth, Barnsley
S72 8DZ

Pubs Preservation Officer
John Bell
(T-mobile) 07930 505220
johnbell24@blueyonder.co.uk

Festival Co-ordinator and
Oakwell Brewery Liaison Officer
Jeremy Sykes
(Vodafone) 07776 453811
01226 243876
C/O camra@yourpint.com

COPY DEADLINE

The deadline for news, articles and
adverts to be considered for
publication is **Friday 5th May 2006**.
These should be sent to Nigel Croft at
the above address.

Is your pint short? Then ask for a top up. Still short? See page 22 - Page 26

Problems Getting The BAR? Get a Postal Subscription.

Send us 6 (1 year) Stamped Addressed C6
sized Envelopes and as each issue is
published we will send your copy straight to
your door. No need to miss any socials,
recipes, pub and brewery news or pub
awards. Send your SAE's (we recommend
35p) to "BAR Subscription" 8 Newtown Ave,
Cudworth, Barnsley S72 8DZ. Alternatively
Send your address with a cheque for £3
payable to "Barnsley CAMRA" to cover Post
& Packing. (UK postage) . Posting to other
countries is available on request.

THE BAR LARGE PRINT EDITION

**Copies at Barnsley and
Cudworth Libraries.**

**Also by post - Please
send an A4 SAE (64p)
to: The BAR Large
Print, 24 Cope Street,
Barnsley, S70 4HX**



**CAMPAIGN
FOR
REAL ALE**

Campaign for Real Ale Ltd
230 Hatfield Road
St Albans
Herts
AL1 4LW
01727 867201
camra@camra.org.uk
www.camra.org.uk

PUB OF THE SEASON SPRING 2006 DARFIELD CRICKET CLUB SCHOOL STREET, DARFIELD

What a wonderful past twelve months for the Darfield Cricket Club. Last year Frank Hoyland was delighted to pick up the Club of the Year Award on behalf of the Club from the branch of Barnsley CAMRA. Later in the year it was announced that the Cricket Club was voted the Regional Club of the Year. The cask ales offered to the members have doubled. And Barnsley CAMRA managed to scrape some members together to play cricket which made for good entertainment...

But what has the Club done now to keep the flow of achievements coming in, well how about Spring Pub of the Season winner? Yes Pub...

Barnsley CAMRA make four season awards each year and we call them the Pub of the Season Awards, now just because a Club goes and beats all the other entries (which was very close) in this season's competition does not mean we are changing the award name. Frank and Sharon Hoyland have now been offering a choice of rotating cask ales to its members for nearly two years, Frank said "I wanted to offer more to the club members and asked the committee if I could put on a guest beer, and since being given the backing of the committee the members have been drinking bigger and better choices of real ales. And "bigger" is quite right, because we decided to put our real ales in oversized lined glasses."

As a visitor to the club you notice that it is not like most others, great food is served on Saturday and Sunday lunchtimes, real ales are being drank by many of the members and the whole place has just a great atmosphere.



I would like to congratulate Frank, Sharon, their staff, and the committee of Darfield Cricket Club for their well deserved award of Pub of the Season Spring 2006. I would also like to say how envious I am at not being a regular member of this wonderful and well-run club.

The presentation evening will be on **Wednesday 3rd May** and will kick start Mild Month and the very popular Sarah Hughes Dark Ruby 6% abv is hoped to be available alongside three other beers. The award will be presented at around **9.30pm** and will be followed by the Club Quiz, so please make a date and come and show your support to what is still the current Yorkshire's Club of the Year and now Pub of the Season for Spring 2006.

May I mention the runners up in this season's awards, the judges reported that all the pubs/club that where entered were of high standard. So well done to (in no particular order) the Travellers, Pogmoor; The Engineers Arms, Higham; Ring O'Bells, Silkstone; The Edmunds Arms, Worsbrough and The Huntsman, Thurlstone.

The Darfield Cricket Club will be holding a summer beer festival from Thursday 17th to Sunday 20th August this will feature around 20 real ales and the CAMRA charity Cricket match on the Sunday lunch. More news will follow in the next edition or contact Frank at the Club.

Nigel Croft



The Commercial dates back to 1890 and the present licensees Paul & Kate have been in the pub for over 10 years. The central bar serves a no smoking snug, a games room/public bar and a comfortable lounge. The pub offers Wentworth Brewery beers and a further 4 guest beers. Food is available (lunch and evenings) from the menu or the day's specials board. Two popular beer festivals are held in the pub each year, May/June and November. Buses from Barnsley are the 265 and 72X and the train station is only a 5 minute walk away.

Open Times Are:-
 Mon - Thurs 12 - 3,
 5.30 to 11; Fri to
 Sun All Day.
 Tel. 0114 246 9066



107 Station Rd, Chapeltown

KEEL INN FREEHOUSE

Canal Street, Barnsley
2006 Good Beer Guide Entry



Mon - Sat 7pm to 11pm; Sun 12noon - 4pm & 7pm - 10.30pm

Hidden just off the busy Old Mill Lane next to ASDA, we offer two changing guest beers from local micro breweries in top quality condition. The nautical theme of the pub reminds visitors of its location next to the now hidden remnants of the Aire and Calder Navigation canal which closed in the 1950's. Within the pub are drinking areas of various sizes, from the lounge to the small conservatory snug. Our function room is available for parties and meetings, and has a large screen TV.

Tel. 01226 284512

GEORGE & DRAGON

SUMMER LANE - BARNSELY

Just on the edge of town, the George and Dragon offers 3 traditional handpulled beers:
 <<< John Smiths Cask plus two changing guests >>>
 And always served with a warm welcome from Keith, Noreen and the staff in oversized lined glasses.

Monday Night is Pool - Tuesday Night is Darts
 Wednesday is General Knowledge with Picture Quiz
 *** Free Sarnies ***

PUB OF THE YEAR 2005 WE ARE IN THE 2006 GOOD BEER GUIDE



Telephone
(01226) 205609

New Patio Seating Area
With Off-Road Parking

Open Every Day
12noon to 11pm (13.50 Sun)

KELHAM ISLAND TAVERN

68 RUSSELL ST
SHEFFIELD
S3 8RW
12-11 TUES - SAT
12-3, 7-10:30 SUN

8 REAL ALES
Lined Glasses
Traditional Cider
Cask Marque Accredited
New Large Non-Smoking Room
with Disabled Facilities
Beer Garden
Food Served
Tues - Sun 12 - 3pm

Folk Night Every Sunday Evening

SHEFFIELD CAMRA
PUB OF THE YEAR 2004 & 2005
And REGIONAL PUB OF
THE YEAR 2004

It takes all sorts to campaign for real ale



Join CAMRA Today...

Just fill in the form below and send, with a cheque (payable to CAMRA Ltd) or for Three Months Free membership (for those renewing or joining by Direct Debit) complete the Direct Debit Form. All forms should be addressed to membership secretary, CAMRA, 230 Hatfield Road, St Albans, Herts, AL1 4LW. Alternatively you can join online at www.camra.org.uk. Rates for single membership are £18 and joint £21. Concession rates are available on request.

.....
 Title Surname Forename(s) Date of Birth
 P'tner Surname Forename(s) Date of Birth
 Address Postcode
 Tel. no.(s)

I wish to join the Campaign for Real Ale, and agree to abide by the Memorandum and Articles of Association.

I enclose a cheque for..... Signed..... Date.....
 Applications will be processed within 21 days The BAR - Barnsley

Instruction to your Bank or Building Society to pay by Direct Debit <small>Please fill in the form and send to: Campaign for Real Ale Ltd, 230 Hatfield Road, St. Albans, Herts. AL1 4LW Name and full postal address of your Bank or Building Society</small>		DIRECT Debit <small>This Guarantee should be detached and retained by the payer.</small> The Direct Debit Guarantee <ul style="list-style-type: none"> This Guarantee is offered by all Banks and Building Societies that take part in the Direct Debit Scheme. The efficiency and security of the Scheme is monitored and protected by your own Bank or Building Society. If the amounts to be paid or the payment dates change CAMRA will notify you 10 working days in advance of your account being debited or as otherwise agreed. If an error is made by CAMRA or your Bank or Building Society, you are guaranteed a full and immediate refund from your branch of the amount paid. You can cancel a Direct Debit at any time by writing to your Bank or Building Society. Please also send a copy of your letter to us.
<small>To The Manager Bank or Building Society</small> Address Postcode Name (s) of Account Holder (s) Bank or Building Society account number Branch Sort Code Reference Number	<small>Originator's Identification Number</small> 9 2 6 1 2 9 <small>FOR CAMRA OFFICIAL USE ONLY This is not part of the instruction to your Bank or Building Society</small> Membership Number Name Postcode Instruction to your Bank or Building Society <small>Please pay CAMRA Direct Debits from the account detailed on this instruction subject to the safeguards assured by the Direct Debit Guarantee. I understand that this instruction may remain with CAMRA and, if so, will be passed electronically to my Bank/Building Society</small> Signature(s) Date	

Banks and Building Societies may not accept Direct Debit Instructions for some types of account

CAMRA Membership makes a Wonderful Gift to any Beer Drinker

BARNSELY CAMRA?

CAMRA was formed in the early 1970's to campaign and fight for real ale and drinkers rights. The nature of the campaign has changed and diversified over the years but there are still battles to fight. CAMRA isn't a small group of enthusiasts but a nationwide army numbering 80,000 and growing – a bigger membership than most political parties, trades unions etc. We're big enough and active enough to be heard. Why not join us in the fight for a better deal for drinkers.

WHAT IS REAL ALE?

It's a name for draught (or bottled) beer brewed from traditional ingredients, matured by secondary fermentation in the container from which it is dispensed, and served without the use of extraneous carbon dioxide; also called 'cask-conditioned'.
So nah yer no.

Join CAMRA Today
Application form
on page 25.



Do you think it's right that...

26 pubs are closing every month?
8 out of 10 pints served contain less than 100% liquid?

Of course you don't and neither do we. If you want to find out more about your favourite real ales, campaign for greater consumer choice as well as helping to safeguard the future of British beer and pubs, then look no further - join CAMRA, the campaign for real ale today.

It takes all sorts to campaign for real ale. In March 2006 we had almost 80,000 members, 230 in the Barnsley area – but we still need your help. Our members are of all ages and interests who, above all, enjoy celebrating their favourite product – real ale.

As a member you will enjoy:

- Membership of your local CAMRA group.
- Subscription to our hard hitting Monthly Newspaper, What's Brewing, with news about beer and brewing as well as information about the 140 + festivals we run a year.
- Free or reduced entry to all CAMRA beer festivals.
- Discounts on many CAMRA products including the best selling Good Beer Guide. Access to the members only section of the website. Which includes "special offers" exclusive to CAMRA members.

Great Minds Think Alike



CAMPAIGN
FOR
REAL ALE

Is your pint short? Then ask for a top up. Still short? See page 22 - Page 24

Pub & Club News

Pubs in **Bold** Serve/Served Real Ale

New managers at the **Norman Inn**, Monk Bretton Rachel and Jason Jennings have put three real ales on the bar, Shepherd Neame Spitfire, Jennings Cumberland and Marstons Pedigree. They are also offering all card carrying CAMRA member a 20% discount on food orders (see ad on page 6).

At the **Horseshoe**, Wombwell the choice of beers has increased with five handpumps being put into action making a possible 10 ales available. The pub will be holding a beer festival from 10th to 21st May. The pub chain announced in 2005 it would ban smoking in all its pubs by May this year. JD Wetherspoon has now said it will delay making its pubs smoke-free until the smoking ban comes into force next year.

A slight error from the last edition, The **Crown and Anchor**, Barugh Green does not serve Tetley cask, it's John Smiths cask, Old Speckled Hen and now another two guest beers. For those wanting the Tetley cask, a great pint can be found at the **Royal Hotel** just down the road. The **Hermit** at Higham also offers Tetley cask as well as John Smiths cask, and the **Engineers** a wonderful pint of Samuel Smiths Old Brewery Bitter.

The new Wetherspoons in Barnsley on Market Hill will be called the **Joseph Bramah**, opening in June. Named after local engineer and inventor, Mr Bramah was born in Stainborough in 1748. Amongst some of his inventions were a beer pump, a water closet and a Bank of England fast, accurate bank note numbering machine.

The **Courthouse Station** which was once a Wetherspoons pub is now up for sale from Greene King Brewery its present owner. The pub still offers a rotating choice of beers from Greene King brewery and its portfolio list. It's hoped the sale will not see the closure of the pub as offices or other use.

The **Milton Arms** at Elsecar has added another beer alongside the cask Stones which is brewed by Everards brewery, famous for Tiger. The guest beer as we went to print was the Wentworth Breweries W.P.A.

Stuart Wood and his family maybe moving from the **Fitzwilliam Arms**, Elsecar, but not to panic, it's hoped they are only going as far as the **Market Hotel**. As for Dave and Susan at the

Market Hotel, well they are having a break from pub running. Barnsley CAMRA wish them the very best for the future and hope to see them in a pub, this side of the bar very soon.

The **Sir George's Arms** at Wombwell has new management but no longer any real ales. Anita and Andy had been keen supporters of cask ale and we also wish them the very best for the future.

The **Rose and Crown** at Hoylandswain now has three real ales on offer.

The **Fountain Inn** at Ingbirchworth is now owned by Enterprise Inns and is undergoing a refurbishment. Local MP Mick Clapham is backing the Campaign to keep open the **Rose and Crown** also in the village which is threatened with demolition for housing. Mr Clapham also complained about the amount of pubs being lost to this trend which seems to be easy for the builders and a quick profit for the pub companies.

The **Travellers Inn** at Dodworth has received a Shine award from Punch Taverns. The award in customer experience category was presented to licensees Sharon and Tony Goodwin.

The **Spencer Arms**, Cawthorne has just finished a weekend of guest ales from local breweries. Four pumps were changing beers over the four days and the ales proved popular with both the locals and visitors. A guest beer will be chosen by the locals to be a more permanent choice for the coming season.

The **Boatman's Rest** at Worsbrough Dale removed Tetley cask from the bar a few months ago and now it is reported the pub is on the market.

It has been reported that The Sportsman on Wakefield Rd, Barnsley was for sale by auction. This makes it a strong candidate for being bought by builders and the pub company making another quick profit for its share holds.

As we go to print it's reported that half the pubs in Barnsley are failing to serve a full pint of draught beers, lagers and stouts. Trading standards found some pubs serving 10% short (about 25p). CAMRA suggest you ask for your glass topping up, use a pub/club that uses lined glasses and if this is still a problem then contact trading standards on 01226 772532.

Nigel Craft

THE NORMAN INN

Tel. 01226 281068



Burton Road, Monk Bretton, Barnsley

Rachel and Jason are the New Managers at the newly refurbished Norman Inn. They have introduced cask ales onto the bar and these are becoming popular with three always available.

Our quiz night is on Wednesdays and starts at 9.15pm

Open 11 - 11pm Sunday to Thursday and 11 - 1am Friday and Saturday

We Offer an Excellent Two for One Menu with an Additional Fantastic Home Made Two for One Choice of Specials.

The Full Menu is Served Daily 12 - 10pm.

20% discount on food orders for all card carrying CAMRA members Mon to Fri excluding bank holidays

Golden Years three course menu available for only £4.95 Mon to Fri, 11am - 4pm

GOOD ALES GOOD FOOD GOOD TIMES

CHAMPIONS TABLE

BARNSELY CAMRA

AWARD WINNERS

Darfield Cricket Club

Darfield

Spring 2006 Pub of the Season

The Dog & Partridge

Hazlehead - Flouch

Winter 2005/06 Pub of the Season

The Cock Inn

Birdwell

Autumn 2005 Pub of the Season

The Ring O' Bells

Silkstone

Summer 2005 Pub of the Season

Darfield Cricket Club

Darfield

Club of the Year 2005

The George & Dragon

Barnsley

Pub of the Year 2005

p	n	b	l	n	v	i	s	c
n	c	s	u	i	d	a	v	t
l	a	i	c	s	b	i	n	u
l	i	c	s	b	f	s	n	v
b	v	n	i	c	i	n	s	t
u	n	i	c	l	n	c	s	t
i	n	v	a	b	c	l	a	n
i	n	v	a	b	c	l	a	n
l	b	c	a	n	i	a	n	s

< page 19
< on puzzle
< Solution to

Our Advertisers at a Glance

- The Moulders Arms - Barnsley - Page 10
- Kelham Island Tavern - Sheffield - Page 4
- Acorn Brewery - Wombwell - Page 8
- The Travellers Rest - Pogmoor - Page 2
- The Commercial - Chapelton - Page 4
- The Furnace Inn - Hoyland - Page 18
- Tom Treddlehoyle - Pogmoor - Page 8
- The Keel Inn - Barnsley - Page 4
- The Royal Albert - Blacker Hill - Page 2
- H.B.Clarks Brewery - Wakefield - Page 18
- The Horseshoe - Wombwell - Page 14
- Thwaites Lancaster Bomber - Back Cover
- The Gatehouse - Barnsley - Page 18
- The Cock Inn - Birdwell - Page 12
- The Norman Inn - Monk Bretton - Page 6
- The Hillsborough Hotel - Sheffield - Page 6
- The George & Dragon - Barnsley - Page 4
- The Devonshire Cat - Sheffield - Page 16
- The Huntsman - Thurstone - Page 12

Thanks to our advertisers the BAR is FREE. Mention you've seen their advert in The BAR



Fund Raising Total Update
Money Raised for the Riding School for the Disabled up to February;
£1563.40 to date Thank You

Britain's Number One Beer and Pubs Guide

Good Beer Guide 2006

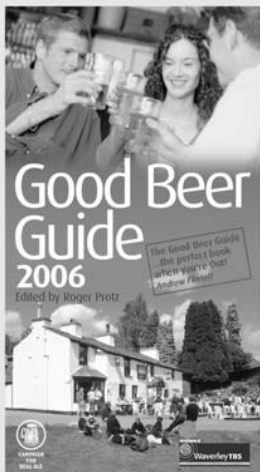
"The Good Beer Guide... the perfect book when you're Out"
Andrew Flintoff
England Cricket All-Rounder

This best-selling guide provides details on 4,500 of the best real ale pubs in Britain today. All pubs listed within the guide serve good-quality real ale and are inspected throughout the year to ensure a consistently high standard.

Every entry contains contact details for each pub as well as descriptions and information on the choice of real ales, food and suitability for families. This beer lovers' bible also contains information on all Britain's breweries with tasting notes for real ales brewed in the UK.

Edited by Roger Protz, the Good Beer Guide 2006 is available direct from the Campaign for Real Ale, RRP £13.99 but just £10 plus £1 p&p (in the UK) for CAMRA members. Call 01727 867201 to order or buy online at www.camra.org.uk/shop

Published in September 2005



01727 867201

www.camra.org.uk/shop

Barnsley Trading Standards.

Not satisfied with the amount of beer in your glass?
Ask for it topping up.
Still not satisfied?
Contact Barnsley Trading Standards on 772532
And write to your MP.

www.barnsley.gov.uk

YOUR ADVERT IN THE BAR

Advertise your Pub, Club or Service here in the pages of THE BAR.

With a circulation of 2000 copies bimonthly, the BAR is an ideal and affordable publication to promote your business. Only £18.34 for a 1/4 page when you take out an advert for a year, 6 issues. (£110)

For more information contact

Margaret Croft
01226 714492
Margaret@yourpint.com

Licensed Taxis and Private Hire Cars

Barnsley Area	Map Cabs	388888
A1	Roy's	381868
Anne's	Monk Bretton Area	
Bobs	Brian's	218742
Blue Line	KG	285583
Direct	Penistone Area	
Elite	Greys	767608
Link	June's	764939
Regency	Macca's	764919
Barugh Green Area	P&A	767936
Allways	Royston Area	
Birdwell Area	Arran's	700776
Marion's	Phoenix	722200
Carlton Area	Royston	722277
A Plus	Shafton Area	
Cudworth Area	Beebee	716586
Clarkey's	Silkstone Area	
Darton Area	A-Line	790207
KS	Wombwell Area	
Darfield Area	Bella Cabs	213137
P&J	Clover	214040
Grimethorpe Area	Merlin	757000
Andy's	OY	759000
Heva's	Worsbrough Area	
Hoyland Area	Daley's	292769
Croft	J&M	751414
HPH	WPH	749555
Mapplewell Area	DON'T DRINK AND	
Al's	DRIVE - EVER!	

Have A Mild This May

CAMRA will be again celebrating Mild month of May with the help of a few pubs and Clubs around the Barnsley area. To mention those who have offered this style of beer in the past will help you choose where to go. **The Moulders Arms, George and Dragon, Keel Inn, Shaw Lane Sports Club, Shaw Inn, Morning Star, Courthouse Station**, all in Barnsley have had at least one mild on during May in the past. And this year the **Gatehouse** will be adding to the list. Outside the town centre is the **Huntsman** at Thurlstone, The **Travellers Rest** at Pogmoor, **Darfield Cricket Club** Darfield, **Spencer Arms** at Cawthorne, **Market Hotel** and **Fitzwilliam Arms** at Elsecar, The **Dog and Partridge** at Hazlehead, **Ring O'Bells** at Silkstone and The **Rose and Crown** and **Wentworth Arms** at Penistone as well as the **Horseshoe** in Wombwell. This year other pubs may choose to try out a mild and we would love to hear from any who are going to offer this to their customers either during May or any other time of year.

One of the milds which proved popular last year was Darkness from Acorn brewery in

Wombwell, Steve Bunting created the beer and I asked him for a few words about it.

"Darkness was Acorn Brewery's first brew of a Mild, originally brewed in April 2005 in support of CAMRA's Mild May promotion. We wanted a traditional dark Mild, very typical of the style but with a slightly higher ABV of 4.2% (Yorkshire has a custom of brewing "Pennine Milds" which are actually pale in colour, Timothy Taylors Golden Best and E&S First Light are good examples.) It is brewed using finest Maris Otter Pale Malt, Crystal and a touch of Black malt which gives the ale its dark ruby appearance. The hops are the English Fuggle which are used throughout, to impart a slight hint of bitterness and aroma."

One other mild is brewed in the area and this is Old Tom from Oakwell. At the time of going to print we talking with the brewery and a pub in town to see if it would be available for May 6th. An update will be put on the Barnsley CAMRA website (www.yourpint.com) of all the pubs that will be offering a mild and the dates this will be available.

Remember - Mild is not Weak, it's just not Bitter...

*Steve Bunting
& Nigel Croft*

Silver Hop

Visitors to last year's Barnsley Beer Festival may have tried a unique one-off beer, Silver Hop. Brewed by the Acorn Brewery of Barnsley, it used local wild hops.

Deep in a secret forest location grows a plantation of wild hops. The variety is unknown. The alpha acids – anybody's guess. They don't grow in sufficient quantity for a full commercial brew to boot. There could be enough to brew on a small 'home' brew plant, if someone wanted to experiment.

Acorn's beer experts were up for the challenge. They made hop brews in a teapot. They made a disastrous test brew. With sufficient 'green' hops to dry hop a beer, Silver Hop was born.

They started with Summer Pale, a light refreshing straw coloured wheat beer, made with Maris Otter Pale Malt and a third of wheat. Mount Hood hops provide a zesty aroma and Challenger hops the bitterness. A subtle blend of just enough Barnsley IPA added the citrus fruit nose from its Styrian hops and lifted the final ABV to 4.3%.

The key to using fresh hops is to use them immediately after harvesting. So the Silver Hop was dry hopped in the casks with the freshly harvested hops. The outcome was a flavour vibrant and alive with resiny oils.

Did you try it? What did you think? Let the Editor know, email camra@yourpint.com

Jeremy Sykes

REAL ALE TALES

Sobering Stories for
Dedicated Drinkers

- by Chris Francis -

Nine Tales of Murder, Mystery and
the Supernatural
based on English Pub Names

£3.50 INCLUDING P & P

Order yours now from
realaletales@yahoo.com

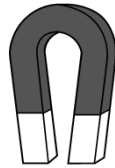
Or Tel: Crusader Books 01377 270999

TOM
TREDDLEHOYLE

Tel. (01226) 290621

POGMOOR ROAD, POGMOOR, BARNSELY

JOHN SMITH'S



CASK BEERS

Monday to Thursday - 3pm to Midnight

Friday - 3pm to 1am

Saturday - 11am to 1am

Sunday - 11am to Midnight

BREWED IN BARNSELY ... WHERE ELSE!



ACORN BREWERY OF BARNSELY

BREWERY TOURS BY ARRANGEMENT

**CONTACT THE BREWERY FOR OUR RANGE OF
SEASONAL BEERS AND MERCHANDISE**

TEL: 01226 270734; FAX: 01226 270759



Paul Senion (left) and Phil Owen (right) proudly displaying their Silver Award for Classic Blonde. The presentation was made by Barnsley CAMRA members and members of Wakefield CAMRA at the brewery on January 25th 2006

Charity Presentation

On the same evening of the presentations for the beers of the festival, Barnsley CAMRA also made its charity donation. The Keel Inn also sold the winning beers (see left) for £1 a pint with ALL the money being donated to the charity. Thank you Dave and Lisa.



The cheque in the safe hands of just some team members from the riding school.

The charity for last year was the Riding School for the Disabled, based just outside Barnsley. Barnsley CAMRA events helped raise £1553 during the year. We ran raffles, walked miles and miles had fun party BBQ's and games evenings.

The money raised will help the school which is self funding provide a much needed service to the 100 to 150 riders each week. It will also help shelter over a dozen horses. The last few years haven't been the best for the school, their premises often being burgled and vandalised but despite these setbacks the team battle on and continue to provide pleasure to some very deserving kids.

Thanks go to everyone who walked the walk or placed a few pence or pounds in the boxes at the festival or bought raffle tickets in the pubs.

Nigel Croft

Award Winning Ales



Jeremy (left) presenting Dave (right) his Gold Award

The Mallard

Worksop Train Station, Worksop, Notts

St Georges Beer Festival 2006
Friday 21st & Saturday 22nd April
Open daily from 12 noon - 11pm

- Approx 18 cask ales, including some festival beers and brand new beers
- Selection of fruit wines, ciders, lagers and bottled continental beers
- Free Admission
- Food available at all sessions
- Winner of North Nottinghamshire Camra Pub of the Year 2003 & 2004
- Be early to avoid disappointment!

(For further information, please contact Sarah on 07789 778857 or e-mail themallard@supanet.com)

On a cold evening in January down at the Keel Inn, Canal Street, Barnsley, Barnsley CAMRA made their presentations for the winning beers at the blind tasting competition (Champion Beer of Barnsley 2005) which was held at Barnsley Beer Festival in October 2005.

The blind tasting is just one of the steppingstones for beers to be entered into CAMRA's Champion Beer Of Britain (CBOB) Competition which is held at the Great British Beer Festival, this year at Earls Court, London 1st - 5th August.

So what were the beers that won the competition?

The Gold Award beer was from our very own Acorn Brewery of Barnsley, with Old Moor Porter.

Dave Hughes is seen pictured (top left) being presented with the award from festival coordinator Jeremy Sykes.

The Silver Award was presented to H.B.Clarks Classic Blonde. Paul Senior and Phil Owen (top right) are pictured receiving the award. This was made a few days after the Gold award at the Clarks Brewery.

The Bronze Award was made to Acorn Brewery of Barnsley again, this time for Regal.

Congratulations to everyone and best of luck in getting through to CBOB later in the year.

Nigel Craft

Is your pint short? Then ask for a top up. Still short? See page 22 - Page 20

AWAY ALES APRIL - MAY

By Laurence Mace

Still in touch for a play-off place and with any luck Barnsley could be enjoying a completely new set of Away Ale destinations... If we can gain promotion of course! However the final four away games need to be completed first so as always we'll delve into our faithful companion for best beers - CAMRA's 2006 Good Beer Guide:-

Saturday 1st April - Huddersfield

Seven entries in Huddersfield's section of the Good Beer Guide can be explored. However as most are on the outskirts of the town centre we'll choose one at Lockwood. I suggest you don't use Lockwood Station but Huddersfield station if using the train; it's much less of a walk. The Star Inn at 7 Albert Street, Lockwood is a back street local enjoying deserved success since opening a few years ago. Emphasis is on quality ale, conversation and a friendly atmosphere, without jukeboxes or games machines. Three drinking areas surround the bar and cosy, real fire. A phenomenal range of beers has been served here resulting in numerous awards - it was CAMRA's Yorkshire Pub of the Year 2003, and runner-up in 2004. Always serving E&S Elland Best bitter, Timothy Taylor Best Bitter and Landlord, guest beers make up the other handpumps. Regular beer festivals (two or more yearly) are staged in the garden marquee.

Open 12 to 11 Saturdays. Tel. (01484) 545443. www.thestarinno.com

Saturday 15th April - Oldham

Having personally checked out all three 2005's Guide entries for Oldham last season I felt I could write with some authority on this year's entries. But there's an extra pub this year so we'll have a "Stab in the dark" and visit Bank Top Tavern, Kings Square, Kings Street (near the Mecca Bingo). This town centre pub has a restaurant and function room and caters for students from the nearby college at lunchtime and more mature customers in the evening and at the weekend. The interior is open-plan with a raised area for dining. A flagged floor by the

bar, together with wrought iron and spindles, enhance the mill theme apparently inspired by the former Bank Top Mill. Ales from Lees Brewery are served here, including GB Mild, Bitter and seasonal beers. A huge car park adjoins the pub.

Open 11 to 11 Saturdays. Tel. (0161) 624 8603

Saturday 22nd April - Blackpool

Back to Lancashire again for some more away ales. This time Blackpool gives six recommended pubs in the Guide. The New Road Inn, 244 Talbot Road, is conveniently adjacent to the North Station, serving Jennings Mild, Cumberland Ale, Sneak Lifter and guest beers. In the early 1840's Talbot Road was the new road into Blackpool and the first railway followed nearby in 1846. This friendly 1930's local has not only consistently good real ale but also as impressive Art Deco interior, retaining many original features. The single, central bar serves the main lounge, a games room and comfortable no-smoking room. A local CAMRA Pub of the Year, it was a silver award-winner in 2005.

Open 11 to 11 Saturday. Tel. (01253) 628872

Saturday 6th May - Walsall


The last game of hopefully a successful season for Barnsley F.C. sees us visiting the Black Country. Four pubs feature in this year's Good Beer Guide for our delectation but as always we'll concentrate on one; the White Lion, 150 Sandwell Street. This imposing Victorian backstreet local holds a Cask Marque accreditation for the quality of its real ales: Adnams Bitter, Fullers London Pride, Greene King IPA and Old Speckled Hen, Highgate Dark and a guest beer. The classic and lively L-shaped bar is probably the best in town. The plush, comfortable lounge caters for the drinker who wants to languish, while the poolroom has two tables. This pub is a great community melting-pot and caught at the right moment can be an instant party - Who knows?! Real cider is also available from Westons, Old Rosie.

Open 12 to 11 on Saturdays. Tel (01922) 628542.

Page 9 Visit our Website for up-to-date News at www.yourpint.com

THE MOULDERS ARMS
 Open Mon - Thurs 4.30 - 11pm; Fri 2.30 - 11pm
 Sat 12noon - 11pm; Sun 12noon - 10.30pm
 49 Summer Street - Barnsley
 A Warm Welcome From Kevin & Irene

GOOD BEER GUIDE 2006 WE ARE IN IT!
JOHN SMITH'S CASK
 PLUS A WEEKLY CHANGING GUEST BEER
 Special Occasions Catered For



Winter Pub of the Season Winner

Stephen and Audrey Marsh at the Dog and Partridge, Hazlehead were presented with their Winter Pub of the Season Award on Saturday 18th March. A great afternoon was had by everyone both CAMRA members, regulars and visitors who just called in on the day.

Winter Pub of the Season 2005/2006



Ads & Publicans

M I L D M D E V O N S H I R E C A T O N T H I
 R E B M O B R E T S A C N A L S E T I A W H T
 S I N M A Y D R Y R E W E R B S K R A L C B H
 I T N K A K E L H A M I S L A N D T A V E R N
 N H P I N T O F M I L D L R E M E M B E R M I
 N E T L D I S N O T W A E A K I T S J T U S T
 I K S H N O T B I T I T E R Y C Z F H K L K T
 N E E N E M W X V C X X C D H T T E G N C N R
 A E R K P F G Z R L J T L Z L V H L K D N T E
 M L S M H F U E P K L Y H J P O M X C I C M B
 R I R U K W M R H V K T N E R H Y W K G P B L
 O N E L O M L X N P Y T T S H B H C Z L V P A
 N N L Z O H S M R A S R E D L U O M E H T K L
 E Y L C K N E N W B C S E T L C N M J Y R V A
 H R E K J K R T B M H E R W E R N T G C Y K Y
 T H V M L N T N A O N M I H E H J Z S W K N O
 T P A L Q T K M E G Z R T N T R D R F M Z L R
 T G R N Q G P D P G E W Z W N K B M M R A T E
 R N T B T K R M B L N H M F T Q K N G K J N H
 K M Q M C G V F L W N Y T R K H N Q R Q J N T
 N O G A R D & E G R O E G K R N H M T O H N T
 N T O M T R E D D L E H O Y L E M F M Q C Q N
 L Y L E T O H H G U O R O B S L L I H Q N A T

PRIZE WORDSEARCH.
 Another chance to win 4 pints of Real Ale from your choice of one of the advertised pubs.

Just find all our advertisers in the grid. They can go horizontally, vertically and diagonally in all eight directions. When you have them all find the hidden message by using the un-used letters.

Look for the advertisers within the pages, a full list is on page 23.

Send the hidden message along with your name, address and which pub you would like your real ale from the advertisers list to Nigel Croft either by email, post or text - also state you are 18 years of age or older. (Address and number on page 26). Closing date is **Friday 5th May 2006.**

The winner will be the first correct answer drawn from the entries. Draw to be made 6th May 2006. One entry per person only. Good Luck!

S				A				C
	C				P	A	N	
	I		L	B				
	B					U		
P		S				N		B
		U					I	
				S	B		L	
	A	B	P				C	
C				N				P

PUBLICANS
 SUDOKU - Number 2
 Sudoku's rules are extremely easy: Fill all empty squares so that the letters from the word PUBLICANS appear once in each row, column and 3x3 box. Solution is on page 23
Play these On-Line at www.yourpint.com

H.B. CLARKS

The Core Range



H B CLARK FIRST BEGAN BREWING IN 1906, AND IS STILL VERY MUCH IN PRODUCTION TODAY. HENRY BOON CLARK WAS OUR FIRST MASTER BREWER, AND HE COULD NEVER HAVE IMAGINED THE STRENGTH, GROWTH AND SUCCESS OF THE BREWERY.



ONE OF THE HIGHLIGHTS WAS IN FULL VIEW, AND PROVED THE QUALITY AND SUCCESSES THAT HENRY BOON CLARK FOUNDED WHEN, WITH HIS ORIGINAL RECIPE, CLARK'S TRADITIONAL WON FIRST PRIZE IN THE 1983 GREAT BRITISH BEER FESTIVAL, IN THE BEST BITTER CATEGORY.



RECENT ACCOLADES ALSO INCLUDE 'CLASSIC BLONDE' AND 'GOLDEN HORNET'



STILL AN INDEPENDENT, FAMILY OWNED BUSINESS, CLARK'S CONTINUE TO BREW EXCITING AND INNOVATIVE ALES. OUR WEBSITE HAS ALL OUR FORTHCOMING BEERS WITH TASTING NOTES AND CAN BE FOUND AT:



WWW.HBCLARK.CO.UK

Contact Phil Owen - 07801 922473 or your local depot for more details

The Furnace Inn

Milton Pond, Milton Road, Hoyland
Tel. (01226) 742000



Quality Beers - Two Real Ales
Quiz Night Tuesdays, 9.30pm
Function Room Available
Buffet on request

Opening Hours:

Monday - Thursday 3pm - Midnight
Friday 3pm - 1am
Saturday 12noon - 1am
Sunday 12noon - Midnight

Lyn In The Kitch' in

BY
Lyn Liversidge

Beer and Onion Soup

As the weather has turned extremely cold I thought that a great soup recipe would be just the thing. This soup has a robust beer and onion flavour that can serve as a meal or a wonderful starter. If serving as a meal, add cheese over the croutons to melt.



You need:

- 3 tbsp olive oil – more if needed
- 3 large onions, thinly sliced
- 1 pinch salt
- 1 pinch pepper
- Approximately 2 pints of beef, chicken or vegetable stock
- 2 bottles of beer
- 2 bay leaves
- ½ tsp dried thyme
- 1 pinch Allspice
- 1 bag of croutons.

Then you:

Heat the oil in a large pan over a medium high heat then put in the onions. Sprinkle them lightly with Salt and pepper and cover the pan.

Stirring from time to time, cook the onions until light brown, approx 30 minutes.

Add all the remaining ingredients except for the croutons.

Bring to the boil and then reduce to a simmer. Cook for approx 30 minutes or Until the onions are quite soft and the soup has a nice onion flavour.

Season to taste with salt and pepper.

Serve garnished with croutons.

For this recipe I used Thwaites Premium Thoroughbred (4.0% abv).

If you prefer you could use a brown ale. It is not a thick soup, more of a broth really, but really tasty just the same.



The **Gatehouse** Open Monday to Saturday 11 - 11
Six Cask Beers Eldon Street
Barnsley
Tel. 01226 282394

Five Draught Lagers
Plus Continental Beers
Live Music every 2nd Thursday of the Month
Every 1st - 3rd - 4th Over 25s Disco - 60s - 70s - 80s
FREE FOOD - Raffle with proceeds to PDSA



www.pubpeople.com

Tea & Coffee
Served All Day

LARGE
NO SMOKING
AREA

FOOD SERVED Mon - Fri 12 - 2.30 & 5 - 7
Saturday 12 - 4

Forthcoming Beer Events

April 21st and 22nd - St Georges Beer Festival weekend at the Mallard, Worksop Train Station. 18+ Beers. (See page 20)

April 28th and 29th - Philadelphia Festival 2006. (See page 14).

April 29th to May 1st - Yorkshire Dales Real Ale Festival, Leyburn. Featuring 20 Breweries.

May 10th to 21st - Wetherspoons Beer Festival at the Horseshoe, Wombwell and other Wetherspoons pubs across the UK.

May 25th to 27th - Lincoln Beer Festival, The Drill Hall, Free School Lane, Lincoln.

August 1st to 5th - Great British Beer Festival at

Earls Court, London. Over 450 real ales and real lagers from UK and around the world. (page 15)

August 17th to 20th - Darfield Cricket Beer and Music Festival. 20 Beers and Bands.

August 20th - CAMRA Charity Cricket Match at the Darfield Cricket Club Festival.

August 26th (TBC) - CAMRA Sponsored Walk in aid of Pathways, Thurlstone to Dodworth.

October 26th to 28th - Barnsley Beer Festival at the Keel Inn, Canal Street, Barnsley. 30 Beers.

November 11th and 12th - The Third South Yorkshire Wetherspoons Crawl - Now the Wetherspoons Weekend.

D & G ENTERTAINMENTS PROUDLY PRESENT THEIR LATEST REINVENTION...

"AHH...THE HUNTSMAN! WE ARE IN AWE OF THEIR SPECTACULAR SUCCESS!" AS NOTED BY CAMRA.

the HUNTSMAN
Pub of the Year 2004!

BARNSELY'S PREMIER REAL ALE HOUSE - WITH CLEAN TOILETS!

"AHH...THE HUNTSMAN! I AM A WATERPROOF HIPPOPOTAMUS!" AS NOTED BY A SILLY PERSON.

Smell!
THE SWEET, FRESH SCENT OF ABSOLUTELY NOTHING FOR AN UNHINDERED RESPIRATORY EXPERIENCE IN THE NO SMOKING AREA!

Taste!
AN IMPRESSIVE ARRAY OF TRADITIONAL CASK ALES & BEERS, ELEGANT LAGERS AND WINES AS WOULD TEMPER THE REALITIES OF A DRAB, WRETCHED LIFE!

THE EXPERIENCE BEGINS
MONDAY - SATURDAY
6PM TO 11PM
SUNDAY
12.00PM TO 10.30PM

Stimulate Your Senses!

Hear!
LIVE MUSICAL ENTERTAINMENT ON WEDNESDAY NIGHTS, ALLEGEDLY DESCRIBED AS "THE MOST INTOXICATING MUSICAL EXPERIENCE OF MY CAREER" BY ERIC CLAPTON.

See!
AN EXTRAORDINARY DISPLAY OF CREATURES, SOME OF WHOM EXHIBIT INTERESTING YET HARMLESS ECCENTRICITIES... BUT SHOULD NOT BE FED!

Touch!
THE LIMITS OF HUMAN SYNAPTIC ACTIVITY DURING OUR TUESDAY NIGHT THEMED QUIZ GUARANTEED TO STIMULATE & PERPLEX!

136 MANCHESTER ROAD, THURLSTONE, SHEFFIELD, S36 9QW;
TELEPHONE: 01226 764892;
EMAIL: DBFIELDS@YAHOO.COM



The Cock Inn

UNDER NEW OWNERSHIP

Quiz Night
Thursday & Sunday From 9pm
Selection of 4 hand pulled cask ales

Large Beer Garden & Summerhouse
Children's Play Area
A Warm Welcome With Comfortable Surroundings & Real Open Fire Awaits You!

3 Course Sunday Lunch £10
Any 2 Courses for £7.50
(Booking Only Please)

Friday Fresh Cod Loin
Thursday Steak Night (10oz Rump) £5.50
New Menu Available
Pre-Order Welcome

MEALS SERVED - MONDAY TO SATURDAY 12 - 2pm & 5.30 - 8pm - SUNDAY 12 - 3pm

Pilley Hill • Off The Walk • Birdwell • Tel: 01226 742155
OPEN MONDAY TO FRIDAY 12 - 3pm and 5.30pm - 11pm - SATURDAY 12 - 11pm - SUNDAY 12 - 10.30pm
Barnsley CAMRA Pub of the Season - Autumn 2005

Great British Beer Festival Competition

(Continued from page 15)

Win a pair of Great British Beer Festival tickets!

CAMRA is offering 25 lucky winners a pair of Great British Beer Festival tickets. All you need to do to enter this competition is email or post your answer to this simple question by Friday 7th July.

Where is the Great British Beer Festival moving to in August 2006?

Please email your answers to: tony.jerome@camra.org.uk or post to Tony Jerome, Marketing Manager, CAMRA, 230 Hatfield Rd, St Albans, Herts, AL1 4LW. Winners will be notified and sent their tickets before Friday 14th July. If you are not a CAMRA member and would like to be sent some more information on our organisation then please let us know on your email or posted entry.

Opening Times & Prices

Tue 1st August 5pm – 10.30pm
Members £5 Non-Members £7
Wed 2nd August 12 noon – 10.30pm
Members £5 Non-Members £7
Thurs 3rd August 12 noon – 10.30pm
Members £5 Non-Members £7
Fri 4th August 12 noon – 10.30pm
Members £5 Non-Members £7
Sat 5th August 11am – 7pm
Members £4 Non-Members £6

A further discount of £1 on any single session ticket ordered before 21st July 2006
Season tickets valid for duration of the festival
Members £15 Non-Members £17.50 (there is no advance booking discount for season ticket holders)

For more up to date information on the Great British Beer Festival please visit - www.gbbf.org

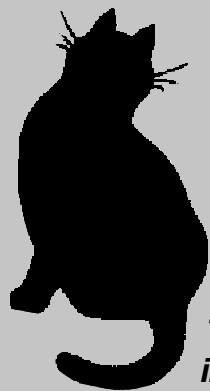
Drinking beer from strength to strength makes you feel much better

If you go out and drink beers with different alcohol by volume (abv), you will have a much better time of it if you drink, as it were, from strength to strength. The cause is probably to be found in the reaction of the taste buds, and in the electrical signals that they send to the brain. Incoming signals from beer with greater alcohol volume will, naturally, have greater impact. The brain constantly records and compares. It will measure the incoming signal against what it has previously had to contend with. If the comparison is unfavourable - for example, if the received signal is weaker due to a lower-than-expected alcohol volume - the brain will not be overly impressed. Positive comparison demands a higher alcohol volume. Which

accounts for the fact that sinking a Caledonian IPA 3.8% abv after savouring a full-bodied Phoenix Wobbly Bob 6% will give less pleasure than the other way around. "Suck it and see".



DON'T JUST THINK IT... JOIN US TODAY... PAGE 24



The Devonshire Cat

*Devonshire Green
Sheffield*

The Devonshire Cat is a completely independent pub offering an enormous range of interesting beers; we hope you will experiment with many different styles and flavours available. Some you will love, others you may not, but finding those you love is part of the fun



12 Real Ales on at All Times:

- 7 Guest Ales
- 5 Permanent - The Devonshire Cat Best Bitter, Caledonian Deuchars IPA, 2 Abbeydale beers and Theakston Old Peculier.



12 Continental Draught Beers:

- Including Erdinger, Liefmans Frambozen, Fruli, Leffe, San Miguel, Amstel and Warsteiner and a guest Belgian Beer. We are now the only pub in Sheffield to sell Paulaner Wheat Beer on Draught!



100+ Bottled Beers from Around the World:

- Belgium, Germany, Czech Republic, Britain, USA, Austria, Australia, Corsica, China, Indonesia, Italy, Kenya, Mexico, Sri Lanka and Thailand.



Traditional Cider Straight from the Barrel:

- We sell 2 guest Saxon Ciders. They are similar to Scrumpy cider with something extra as they are brewed by an Italian who has added his own style to the ciders.



Homemade Food Served Until 8pm Everyday:

- We take as much pride in our food as we do in our beer. All our food is prepared on the premises, not pre-packaged like all the pub chains. Here at The Devonshire Cat we believe that the best thing to accompany a great meal is a great beer, so each item on the menu has a recommended beer.

The Devonshire Cat - 49 Wellington Street, Sheffield S1 4HG



www.devonshirecat.co.uk ☎ 0114 279 6700

The Pathways Centre Barnsley CAMRA's Charity for 2006 / 2007

Foreword from Pathways Patron - Ian McMillan

I'm proud to be the Patron of the Barnsley Domestic Violence Group (BDVG) or the Pathways Centre; it's a place that's sadly needed more and more and a centre that is vital to the emotional, physical, mental and spiritual health of the people of Barnsley.

I'm often asked to be a patron or a supporter of organisations locally and nationally, and to be honest a lot of them are to do with writing and literacy. Pathways is different and yet a lot of the work here is to do with words and the way that abusers and the abused can use (and abuse) words.

Hit. Slap. Smack. Taunt. Torment. Bully. Kick. Cry. Scream. Push. Trip. Stare. Point. Small words, short words that are easy to say but which mean so much in so many different and terrible ways.

Here are a few more short words: Help. Cash. Dosh. Coin. Note. Cheque. Time. That's what we need here at Pathways. Small words with big meanings. Let's face it, Domestic Violence isn't a headline-grabber. It's not a natural disaster, it's not a famine or an earthquake. And yet, in some ways, it is. It's an unnatural disaster. It's a famine of feeling, where people are hungry for love or a kind word, and it's an earthquake of terror in a house down your street, across your road.

So we need your help. We need your money, and your support, and we need you to know that places like Pathways are, as I said at the start, vital. And, not counting these words that I'm writing now, I've just written 251 words. And I wish that each of these words could get the

Pathways Centre a thousand pounds. Then I'd be happy. Because no matter how important or pretty or powerful these words are, they aren't enough. Pathways needs the money, or it won't exist. And you know what happens without a

“And of course as CAMRA members you'll remember when real beer was almost a lost cause and we were almost condemned to drinking Watney's Red Barrel!”

pathway. You get lost. Really lost. As patron of Pathways I'd just like to say many, many thanks to the Barnsley branch of CAMRA for adopting Pathways as their charity. There are so many demands on peoples' time and money, and it's great to have you supporting a cause that's often forgotten. And of course as CAMRA members you'll remember when real beer was almost a lost cause and we were almost condemned to drinking Watney's Red Barrel! So, many thanks for helping a cause that can sometimes feel like it's not fashionable and not at the front of peoples' agendas. Very best wishes,

Ian McMillan

Please contact BDVG or pass the knowledge of its existence of the group to someone that you know is suffering.
DO NOT SUFFER IN SILENCE

Tricia (Mrs PM Roberts) - Chair of BDVG at The Pathways Centre, 01226 731812
admin@barnsleydv.fsnet.co.uk

Excellent Range of Real Ales
All Day Menu
Fine Selection of Wine
Children Welcome
IN THE 2006 GOOD BEER GUIDE

THE HORSESHOE

Sun - Thu 9am - midnight; Fri/Sat 9am - 1am

Food Served Daily 9am to 11pm

BEER FESTIVAL

Wed 10th to Sun 21st May

Wheelchair Access - Large Screen TV's
Designated Non-Smoking Area

30 High Street, Wombwell

Tel. 01226 273820

Philadelphia Festival

The Philadelphia Festival is Sheffield's annual Spring event for blues fans to enjoy a weekend of live music - washed down with a selection of the finest real ales, taking place around the Philadelphia area of Sheffield, on the 28th and 29th April 2006.

Various real ale pubs & bars are taking part, so you can do a crawl of them and enjoy a different band and a different beer in each.

Some of the local breweries will be brewing special festival beers named on a blues theme, which will be found on the bars at the venues taking part in the festival.

On the 29th there will be the main festival event at the Burton Street Project, with an all day program of live music from midday to 11pm, and a CAMRA operated beer festival bar, with a choice of around 20 cask ales, traditional Cider, red & white house wine and soft drinks.

Finally, running alongside the Philadelphia Festival will be the University of Sheffield Students Union Beer Festival, offering a massive range of beers and live music.

For more details visit the official Philadelphia festival website at www.hummingbirdsbluesband.co.uk

Is your pint short? Then ask for a top up. Still short? See page 22 - Page 14

Brewery News

Acorn Brewery

A new beer called Pioneer 4.6% abv will be out as the Bar goes to print, this beer uses 100% Pioneer hops with a small amount of black malt for colour. The production of Summer Pale had to stop due to a people wanting Winter Ale. Dave Hughes is confident that the brewery will be running at a new 20 barrel capacity by the end of the year. Good news for the drinkers of Mild, Darkness will be out again for May and will be available in bimonthly intervals throughout the coming year.

H.B.Clarks

Steel Cities Best 4.2% abv is due out into the pubs in April, this is a pale golden beer with a distinctive aroma. The Bramling Cross and Challenger hops combine well to produce a spicy blackcurrant flavour. In May we see the return of Black Gold 4% abv, this is a rich dark mild like bitter with roast flavours and coffee overtones. Full bodied and not at all bitter. A great mild for Mild month.

Ossett Brewery

At the SIBA (The Society of Independent Brewers) National Brewing Awards held in Bristol in March, Excelsior won the Gold in the Strong Ales. The competition for this award is fearsome with entries from all over the UK going into Regional finals and then only the top beers going forward to the National final. It is the second time that Excelsior has picked up this national award following their win in 2003.

Nigel Craft



Great British Beer Festival 2006

The Great British Beer Festival will be hosted this year at Earls Court between 1st - 5th August, following 14 successful years at London Olympia.

Over 47,000 people attended last year's festival. The move to Earls Court will allow us to offer more choice, variety and beer than ever before!

Tony Jerome, CAMRA Marketing Manager said, "We are all looking forward to moving the Great British Beer Festival to Earls Court. We have had some very successful festivals at Olympia over the recent years and following last year's record attendance we felt this was the ideal time to move to a bigger venue. This success is a testament to how hard the 1000 volunteers work at the Great British Beer Festival." (A good handful of these are from the Barnsley Branch, Ed)

Over 700 tasty tipples from the smallest microbreweries and large regional brewers have been handpicked for visitors to try. More than ever before! These include wheat beers, ciders, golden ales, stouts, porters, bitters, milds, bottle-conditioned beers, perries and real lagers from all over the world.

The festival is not only about the ale! You will also be able to enjoy food, live music, entertainment, games, tombolas, and quizzes in the comfort of a family friendly atmosphere. Why not catch up and socialise with friends or just soak up the festival atmosphere!

Other Festival Highlights

- Family Room - all those under the age of 18 must remain in the Family Room throughout the festival and must be supervised by a family member
- Tutored Beer Tastings - why not learn to appreciate the different tastes and flavours by attending one of our tutored beer tastings - But be warned - places sell out fast! (BOOK NOW)
- Corporate Hospitality - For work colleagues or clients, we are able to offer a variety of packages to suit most tastes and budgets. Please contact georgina.rudman@camra.org.uk

(Continues on page 17)

Page 15 Visit our Website for up-to-date News at www.yourpint.com