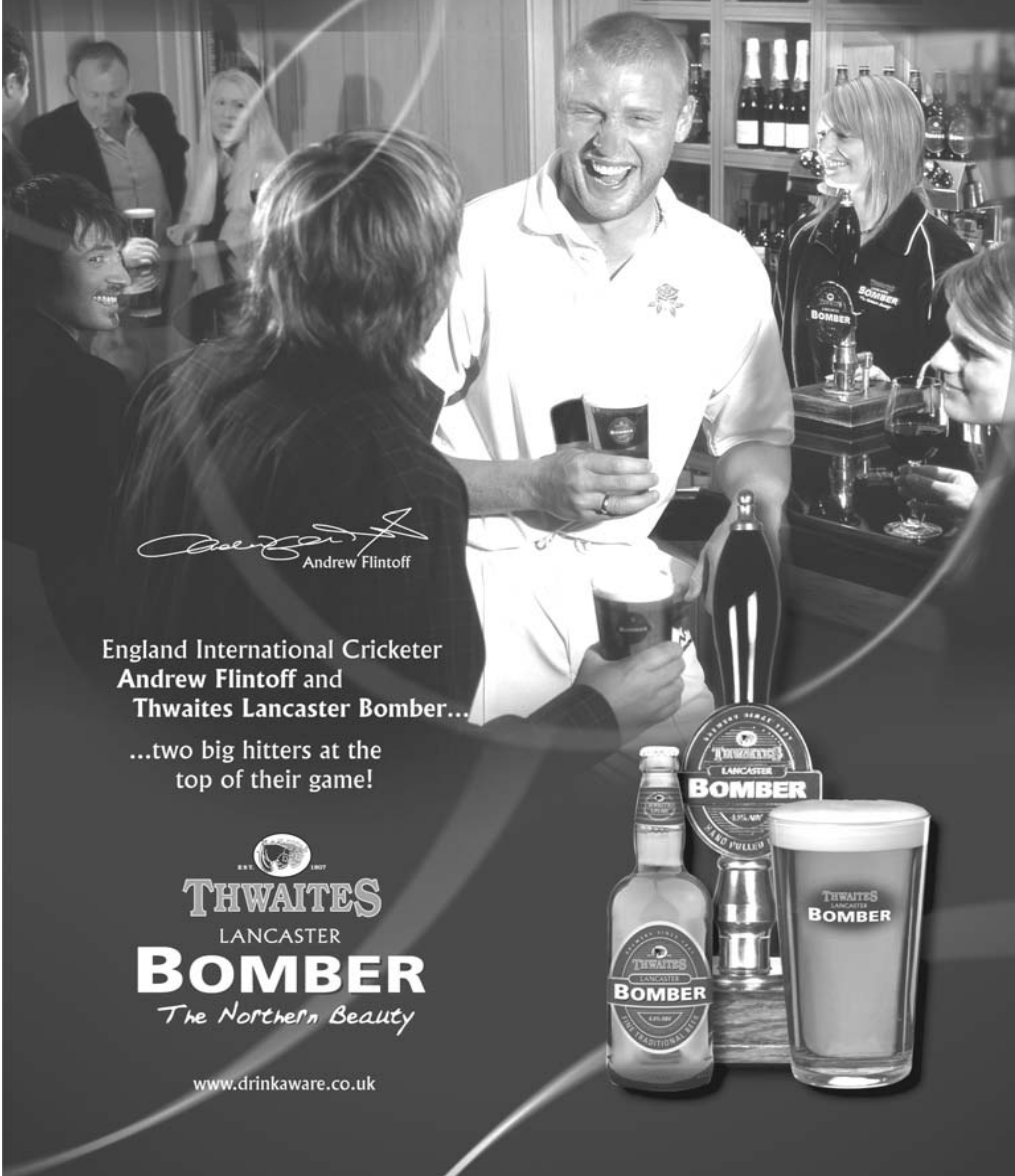


Out.

www.thwaites.co.uk



Andrew Flintoff
Andrew Flintoff

England International Cricketer
Andrew Flintoff and
Thwaites Lancaster Bomber...

...two big hitters at the
top of their game!

THWAITES
LANCASTER
BOMBER
The Northern Beauty

www.drinkaware.co.uk



Travellers Rest - Intake Lane - Pogmoor : Morning Star - Dobie Street - Barnsley

Newsletter From The Barnsley Branch Of The Campaign For Real Ale.



**CAMPAIGN
FOR
REAL ALE**

THE BAR **FREE**

Barnsley Ale Report

February March 2006

www.yourpint.com

2000 copies circulated to over 120 outlets



National Pubs Week

Pubs - Past, Present and Future
18th - 25th February

**NATIONAL
PUBS WEEK**

What's Happening in Our Local?
(details on page 14)

**NATIONAL
PUBS WEEK**

Gatehouse Beer Festival

A National Pubs Week Event
21st - 25th February

20 Real Ales - Cider - Food
(details on page 12)

INSIDE THIS ISSUE OF THE BAR

Winter Pub of the Season	3	National Pubs Week Events	14
Pub, Club & Brewery News	5	Binge-Drinking. An Age-Old Problem	17
Champion Beer of Barnsley 2005	7	Prize Word Search	19
Away Ales - February March	9	Are You A Beer Geek?	21
Lyn in the Kitch' In	11	Social Events Calendar	27

The Furnace Inn

Milton Pond, Milton Road, Hoyland
Tel. (01226) 742000



Quality Beers - Two Real Ales
Quiz Night Tuesdays, 9.30pm
Function Room Available
Buffet on request

Opening Hours:

Monday - Thursday 3pm - Midnight
Friday 3pm - 1am
Saturday 12noon - 1am
Sunday 12noon - Midnight

"No-one ever gets struck by lightning...

...do they?"

Have you arranged your will yet?

Call us free and see how we can help

0800 328 2364

Or visit www.nationallegalservices.co.uk
quote ref: 9320



Because you don't *always* need a solicitor to put your affairs in order

Mention you are a Barnsley CAMRA Member for a 10% discount.



SOCIAL EVENTS CALENDAR

Contact details on page 26

Members Notes.

Please fill in your Good Beer Guide Voting Forms and return them before the 6th February.

Monday 6th February

Good Beer Guide voting meeting at the Travellers Rest, Pogmoor at 8pm. Catch the 7:35pm number 14 bus from town. Please have your voting forms completed and ready to hand in on your arrival. Postal and Internet voting must be received before 4pm on this date.

Wed 15th to Sat 18th February

Rotherham - Oakwood Real Ale and Music Festival. Volunteers are required at ALL sessions, please consider helping for an hour or two. See Page 13 for full details.

Sat 18th to Sat 25th February

National Pubs Week. See page 14 for list of submitted events.

Tuesday 28th February

AGM at the Shaw Lane Sports Club.

Start 8pm. Please arrive a little early for a prompt start. Followed by the branch meeting at approximately 9:15pm

Saturday 4th March

Regional meeting at Huddersfield, Cowcliffe & Netheroyd Liberal Club. Catch the 10:12am train from Barnsley to Huddersfield then the 11:35 381 bus to Cowcliffe.

Saturday 18th March

Winter Pub of the Season Presentation to the Dog and Partridge, Hazlehead, Flouch. The presentation will be an afternoon event and is planned to take place around 2:30pm. See page 3 for bus times.

Tuesday 21st March

The BAR distribution social, pick up your copies of the newsletter for distributing to our pubs. 8pm from the Keel Inn, Canal Street, Barnsley

Tuesday 28th March

Branch meeting and social. 8pm start at Sir Georges Arms, Wombwell. Catch the 7.26pm train from Barnsley for a short 2 minute walk to the pub.

The new Interchange is now in phase 2, they have demolished the East bus station to put in a temporary bus station? This is the interim station where most buses will leave from until mid 2007. Times were correct when going to print but no doubt will change within a few weeks of the BAR going to print, as usual...
Call Traveline on 01709 515151 before heading out.

Margaret Croft

The Bar is produced by the Barnsley Branch of the Campaign for Real Ale. The views expressed are those of the individual authors and may not be those of the editor or those of CAMRA either locally or nationally. The editor acknowledges material supplied by other CAMRA publications and welcomes comments or articles for inclusion and these should be sent to the address on the previous page. For advertising and distribution information please contact Margaret via contact information on previous page.

The BAR is printed in English only. PDF format is available at www.yourpint.com and can be translated into other languages. Software to make the translation is not provided by CAMRA Ltd or the editor. Large print is available see page 26.

© The contents of this newsletter are copyright CAMRA Ltd, 230 Hatfield Road St Albans, Herts, AL1 4LW. Reproduction of articles is permitted as long as the source is clearly acknowledged. Printed by SPC Ltd, Caxton House, Sheffield S4 8LU Tel. 0114 242 5530

D & G ENTERTAINMENTS PROUDLY PRESENT THEIR LATEST REINVENTION...

"AHH...THE HUNTSMAN! WE ARE IN AWE OF THEIR SPECTACULAR SUCCESS!" AS NOTED BY CAMRA.

the HUNTSMAN

Pub of the Year 2004!

BARNSELY'S PREMIER REAL ALE HOUSE - WITH CLEAN TOILETS!

"AHH...THE HUNTSMAN! I AM A WATERPROOF HIPPOPOTAMUS!" AS NOTED BY A SILLY PERSON.

Smell!

THE SWEET, FRESH SCENT OF ABSOLUTELY NOTHING FOR AN UNHINDERED RESPIRATORY EXPERIENCE IN THE NO SMOKING AREA!

See!

AN EXTRAORDINARY DISPLAY OF CREATURES, SOME OF WHOM EXHIBIT INTERESTING YET HARMLESS ECCENTRICITIES... BUT SHOULD NOT BE FED!

Stimulate Your Senses!

Taste!

AN IMPRESSIVE ARRAY OF TRADITIONAL CASK ALES & BEERS, ELEGANT LAGERS AND WINES AS WOULD TEMPER THE REALITIES OF A DRAB, WRETCHED LIFE!

THE EXPERIENCE BEGINS MONDAY - SATURDAY 6PM TO 11PM
SUNDAY 12.00PM TO 10.30PM

Hear!

LIVE MUSICAL ENTERTAINMENT ON WEDNESDAY NIGHTS, ALLEGEDLY DESCRIBED AS "THE MOST INTOXICATING MUSICAL EXPERIENCE OF MY CAREER" BY ERIC CLAPTON.

Touch!

THE LIMITS OF HUMAN SYNAPTIC ACTIVITY DURING OUR TUESDAY NIGHT THEMED QUIZ GUARANTEED TO STIMULATE & PERPLEX!

136 MANCHESTER ROAD, THURLSTONE, SHEFFIELD, S36 9WQ.
TELEPHONE: 01226 764892; EMAIL: DBFIELDS@YAHOO.COM

BRANCH OFFICERS

Chair and Acorn Brewery
Liaison Officer
Eric Gilbert
(O2 mobile) 07742 169917

Secretary, BAR Editor and Webmaster
Nigel Croft
(O2 mobile) 07736 288072
01226 207858
camra@yourpint.com
24 Cope Street, Barnsley S70 4HX

Treasurer
Laurence Mace
(O2 mobile) 07752 399182
4 Darley Cliff Cottages, Worsbrough,
Barnsley S70 4AJ

Membership, Social Secretary and
BAR Advertising
Margaret Croft
(O2 mobile) 07734 155792
01226 714492
Margaret@yourpint.com
8 Newtown Ave, Cudworth, Barnsley
S72 8DZ

Pubs Preservation Officer
John Bell
(T-mobile) 07930 505220
johnbell24@blueyonder.co.uk

Festival Co-ordinator and
Oakwell Brewery Liaison Officer
Jeremy Sykes
(Vodafone) 07776 453811
01226 243876
C/O camra@yourpint.com

COPY DEADLINE

The deadline for news, articles and
adverts to be considered for
publication is **Friday 3rd March 2006**.
These should be sent to Nigel Croft at
the above address.

Problems Getting The BAR? Get a Postal Subscription.

Send us 6 (1 year) Stamped Addressed C6
sized Envelopes and as each issue is
published we will send your copy straight to
your door. No need to miss any socials,
recipes, pub and brewery news or pub
awards. Send your SAE's (we recommend
35p) to "BAR Subscription" 8 Newtown Ave,
Cudworth, Barnsley S72 8DZ. Alternatively
Send your address with a cheque for £3
payable to "Barnsley CAMRA" to cover Post
& Packing. (UK postage) . Posting to other
countries is available on request.

THE BAR LARGE PRINT EDITION

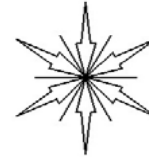
**Copies at Barnsley and
Cudworth Libraries.**

**Also by post - Please
send an A4 SAE (64p)
to: The BAR Large
Print, 24 Cope Street,
Barnsley, S70 4HX**

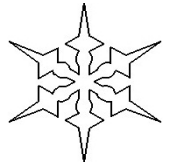


**CAMPAIGN
FOR
REAL ALE**

Campaign for Real Ale Ltd
230 Hatfield Road
St Albans
Herts
AL1 4LW
01727 867201
camra@camra.org.uk
www.camra.org.uk



PUB OF THE SEASON WINTER 2005-2006 The Dog & Partridge Hazlehead - Flouch



On the far western outskirts of Barnsley – just inside the Peak District National Park - lies an old coaching inn, this inn has been licensed since about 1742. Continuing this pub tradition into the present and serving some top-notch real ales are owners Stephen and Audrey Marsh, who have built up (literally) their pub, hotel and restaurant business over the last five and a half years.

Mainly due to the quality and variety of their hand pulled beers, Barnsley CAMRA are delighted to name the Dog and Partridge, Winter Pub of the Season for 2005/2006. The four cask beers usually consist of our local Acorn Barnsley Bitter with three rotating guest ales from other local independent breweries – recently Bradfield beers from just down the road.

In addition to the quality of the real beers, the cosy real open-fire atmosphere provides a proper country inn feel to the place, having accommodation available you'll probably want to stay over especially if the weather closes in! On certain weekends helicopter flights can even be booked from here as well.

Because the nearest bus stop (Flouch roundabout) is nearly two miles away we've arranged with Stephen and Audrey to make our presentation on the afternoon of **Saturday 18th March 2006, meeting up from 1pm onwards with the award being presented at around 2.30pm**. Please join us for this lunchtime social and congratulate everyone. (See below for a no walking plan.)

Buses from Barnsley are currently the 23 at 10:30am and 12:30pm, or 24 at 11:30am and 1:30pm, or from Penistone the 20 at 11:30am or 1:30pm. [The last bus back from the Flouch to Barnsley is as late as 10:39pm but remember the 30 minute walk first!]

On behalf of Barnsley CAMRA - Congratulations to all the team at the Dog and Partridge for their hard work towards winning the Winter Pub of the Season Award.



Well done to the other nominees who just missed out this time. In no particular order the Edmunds Arms, Worsbrough; the Huntsman, Thurlstone; the Royal Albert, Blacker Hill and the Thornley Arms, Dodworth.

For those who do not want to walk the 2 miles from Flouch roundabout, we will be arranging for transport to pick up from the Waggon and Horses, Langsett at 1.15pm. The connecting bus for this is the 11:30am number 24. (that's the bus I will be on then. Ed)

Phone: (01226) 763173 Website: www.dogandpartridgeinn.co.uk

Laurence Mace



The Commercial dates back to 1890 and the present licensees Paul & Kate have been in the pub for over 10 years. The central bar serves a no smoking snug, a games room/public bar and a comfortable lounge. The pub offers Wentworth Brewery beers and a further 4 guest beers. Food is available (lunch and evenings) from the menu or the day's specials board. Two popular beer festivals are held in the pub each year, May/June and November. Buses from Barnsley are the 265 and 72X and the train station is only a 5 minute walk away.

Open Times Are:-
Mon - Thurs 12 - 3,
5.30 to 11; Fri to
Sun All Day.
Tel. 0114 246 9066



107 Station Rd, Chapeltown

KEEL INN FREEHOUSE

Canal Street, Barnsley

2006 Good Beer Guide Entry



Mon - Sat 7pm to 11pm; Sun 12noon - 4pm & 7pm - 10.30pm

Hidden just off the busy Old Mill Lane next to ASDA, we offer two changing guest beers from local micro breweries in top quality condition. The nautical theme of the pub reminds visitors of its location next to the now hidden remnants of the Aire and Calder Navigation canal which closed in the 1950's.

Within the pub are drinking areas of various sizes, from the lounge to the small conservatory snug. Our function room is available for parties and meetings, and has a large screen TV.

Tel. 01226 284512

GEORGE & DRAGON

SUMMER LANE - BARNSELY

Just on the edge of town, the George and Dragon offers 3 traditional handpulled beers:

<<< John Smiths Cask plus two changing guests >>>
And always served with a warm welcome from Keith, Noreen and the staff in oversized lined glasses.

Monday Night is Pool - Tuesday Night is Darts
Wednesday is General Knowledge with Picture Quiz
*** Free Sarnies ***

PUB OF THE YEAR 2005
WE ARE IN THE 2006
GOOD BEER GUIDE



Telephone
(01226) 205609

New Patio Seating Area
With Off-Road Parking

Open Every Day
12noon to 11pm (10.30 Sun)

It takes all sorts to campaign for real ale



Join CAMRA Today...

Just fill in the form below and send, with a cheque (payable to CAMRA Ltd) or for Three Months Free membership (for those renewing or joining by Direct Debit) complete the Direct Debit Form. All forms should be addressed to membership secretary, CAMRA, 230 Hatfield Road, St Albans, Herts, AL1 4LW. Alternatively you can join online at www.camra.org.uk. Rates for single membership are £18 and joint £21. Concession rates are available on request.

.....
Title Surname Forename(s) Date of Birth
.....
P'tner Surname Forename(s) Date of Birth
.....
Address Postcode
.....
Tel. no.(s)

I wish to join the Campaign for Real Ale, and agree to abide by the Memorandum and Articles of Association.

I enclose a cheque for..... Signed..... Date.....
Applications will be processed within 21 days The BAR - Barnsley

		Instruction to your Bank or Building Society to pay by Direct Debit			
<small>Please fill in the form and send to: Campaign for Real Ale Ltd, 230 Hatfield Road, St. Albans, Herts. AL1 4LW Name and full postal address of your Bank or Building Society</small>		<small>Originator's Identification Number</small>		<small>This Guarantee should be detached and retained by the payer.</small>	
<small>To The Manager Bank or Building Society</small>		<input type="text" value="9 2 6 1 2 9"/>		The Direct Debit Guarantee	
<small>Address</small>		<small>FOR CAMRA OFFICIAL USE ONLY This is not part of the instruction to your Bank or Building Society</small>		<ul style="list-style-type: none"> ■ This Guarantee is offered by all Banks and Building Societies that take part in the Direct Debit Scheme. The efficiency and security of the Scheme is monitored and protected by your own Bank or Building Society. ■ If the amounts to be paid or the payment dates change CAMRA will notify you 10 working days in advance of your account being debited or as otherwise agreed. ■ If an error is made by CAMRA or your Bank or Building Society, you are guaranteed a full and immediate refund from your branch of the amount paid. ■ You can cancel a Direct Debit at any time by writing to your Bank or Building Society. Please also send a copy of your letter to us. 	
<small>Postcode</small>		<small>Membership Number</small>		<small>detached and retained this section</small>	
<small>Name (s) of Account Holder (s)</small>		<small>Name</small>			
<small>Bank or Building Society account number</small>		<small>Postcode</small>			
<small>Branch Sort Code</small>		<small>Instruction to your Bank or Building Society Please pay CAMRA Direct Debits from the account detailed on this instruction subject to the safeguards assured by the Direct Debit Guarantee. I understand that this instruction may remain with CAMRA and, if so, will be passed electronically to my Bank/Building Society</small>			
<small>Reference Number</small>		<small>Signature(s)</small>			
		<small>Date</small>			
<small>Banks and Building Societies may not accept Direct Debit Instructions for some types of account</small>					

KELHAM ISLAND TAVERN

68 RUSSELL ST SHEFFIELD S3 8RW
12-11 TUES - SAT
12-3, 7-10:30 SUN

8 REAL ALES
Lined Glasses
Traditional Cider
Cask Marque Accredited
New Large Non-Smoking Room
with Disabled Facilities
Beer Garden
Food Served
Tues - Sun 12 - 3pm
Folk Night Every Sunday Evening
SHEFFIELD CAMRA
PUB OF THE YEAR 2004 & 2005
And REGIONAL PUB OF THE YEAR 2004

CAMRA Membership makes a Wonderful Gift to any Beer Drinker

BARNSELEY CAMRA?

CAMRA was formed in the early 1970's to campaign and fight for real ale and drinkers rights. The nature of the campaign has changed and diversified over the years but there are still battles to fight. CAMRA isn't a small group of enthusiasts but a nationwide army numbering 79,000 and growing – a bigger membership than most political parties, trades unions etc. We're big enough and active enough to be heard. Why not join us in the fight for a better deal for drinkers.

WHAT IS REAL ALE?

It's a name for draught (or bottled) beer brewed from traditional ingredients, matured by secondary fermentation in the container from which it is dispensed, and served without the use of extraneous carbon dioxide; also called 'cask-conditioned'.
So nah yer no.

Join CAMRA Today
Application form
on page 25.



Do you think it's right that...

26 pubs are closing every month?
8 out of 10 pints served contain less than 100% liquid?

Of course you don't and neither do we. If you want to find out more about your favourite real ales, campaign for greater consumer choice as well as helping to safeguard the future of British beer and pubs, then look no further - join CAMRA, the campaign for real ale today.

It takes all sorts to campaign for real ale. In September 2005 we had around 79,000 members, 230 in the Barnsley area – but we still need your help. Our members are of all ages and interests who, above all, enjoy celebrating their favourite product – real ale.

As a member you will enjoy:

- Membership of your local CAMRA group.
- Subscription to our hard hitting Monthly Newspaper, What's Brewing, with news about beer and brewing as well as information about the 140 + festivals we run a year.
- Free or reduced entry to all CAMRA beer festivals.
- Discounts on many CAMRA products including the best selling Good Beer Guide. Access to the members only section of the website. Which includes "special offers" exclusive to CAMRA members.

Great Minds Think Alike



CAMPAIGN
FOR
REAL ALE

Pub & Club News

Pubs in **Bold** Serve/Served Real Ale

So we have managed to get through December as well as Christmas and New Year without any instances of Armageddon such as were predicted by the media hype in the run up to 24hr licensing in November.

So where can you go for a 24hr booze up? Well not really anywhere... We have about 200,000 pubs, clubs and hotels with a licence to serve alcohol in England and Wales. Only 40% (80,000) sought an extension of any kind; of these half (40,000) had their licence altered slightly without new conditions being imposed on them.

About 165 pubs, 75 clubs and 110 hotels have sought and won the theoretical right to serve drink around the clock – and even then almost every one of them intends to do so only infrequently. This means that less than 0.002% of the entire assembly of pubs, clubs and hotels available can open and create the medias dire predictions of doom.

Barnsley pubs and clubs hours have changed only a little with the majority of the pubs and clubs in the country, offering an extra hour or

two at weekends. Only the 24 hour supermarkets, a garage and a on-line beer sales have 24 hour opening in Barnsley. The **Gatehouse** will be running a Beer Festival from 21st - 25th Feb (see page 12).

The **Crown and Anchor**, Barugh has a new licensee who will be offering a changing guest beer alongside the Tetley Cask.

The former Hewer & Brewer (Jolly's), Darfield has had a complete refurbishment and opened as the Queen Victoria but with no real ales.

The **Milton Arms** in Elsecar is now offering a real ale. Now all the pubs from the Station to the Heritage centre serve cask beers.

Planning notice has been submitted for demolition to build for dwellings to the **Rose and Crown** at Ingbirchworth and the **Woodmoor**, Carlton.

The **Fountain Inn** at Ingbirchworth has been sold and is now closed for refurbishment. The Low Valley Arms was sold for more than 1/4 million pounds £60,000 more than its estimate. However nothing much will change as the tenant has a 10 year lease.

Nigel Croft

Brewery News

Acorn Brewery

The results for Acorn beers at the Northern SIBA championships saw Barnsley Gold receiving third place in the Best Bitter class and I.P.A. getting fourth in the Strong Ales class. Alas Old Moor Porter did not wow the judges this year.

H.B. Clarks Brewery

Still available is Wakey! Wakey! At 4.6%, this is a pale fruity beer created from its Northdown hops. This straw coloured beer has a rounded bitter taste, but no harshness is found on the palate.

Westgate at 3.8% abv is the beer for February, this cooper coloured smooth beer has a malty and hoppy aroma, this leads to a fruit and hoppy taste and a good clean strong malt flavour.

And for March it's the return of Two Jags at 4% abv. A pale coloured beer which has a moderate bitterness, and a fruit aroma created

from its Styrian Goldings. This beer has hints of fruit continuing well into its finish.

Kelham Island

In January the brewery welcomed Garrett Oliver, the internationally known Brewmaster from The Brooklyn Brewery in New York. He has brewed a unique beer at the brewery. The beer is a smoked porter and should be available at the Fat Cat in Sheffield.

Still available is Bete Noire Stout at 5.5% abv but not for long... A dark winter beer. Malt, Caramel and Chocolate predominate in this beer leading to a dry yet sweet aftertaste that leaves you wanting more!

I.P.A 5.5% abv is brand new ale for January. This Indian Pale Ale is a bitter hoppy strong pale ale.

Cupids Delight 4.5% is a romantic ale for lovers out there. Stuck what to get for you partner. Why not buy them a pint of Cupids Delight. Kelham Islands February special for Valentines.

Nigel Croft



THE HILLSBOROUGH HOTEL

54-58 LANGSETT ROAD,
SHEFFIELD S6 2UB

OPEN: 6 – 11pm Tuesdays – Wednesdays

4.30 – 11pm Thursdays – Saturdays and 6 – 10:30pm Sundays

Largely non-smoking

Designated smoking area

Tram stop close by

Our stronger beers are available by the bottle

Visit our website: www.edalebrewery.co.uk

Tel: 0114 232 2100 Fax: 0114 220 0500 E-mail: info@edalebrewery.co.uk

Pub of the Season - Autumn 2005



Branch Chair Eric Gilbert (left) presents the Autumn Pub of the Season Award to Glyn (middle) and Phil (right). Well Done...

The Cock Inn offers a friendly atmosphere, real fire, a tasty bite to eat and of course a first class pint of real ale. The Cock Inn is a pub worth a visit and has been winner of Pub of the Season before. Now run by Glyn and Phil who have now settled in so well they seem to have been in residence longer than a year. Service is friendly and the pub is comfortable, a great place for an Autumn (and Winter) drink.

Real ale choice is John Smiths Cask, Stones Cask and up to two changing guest beers. A wide range of beers has already been offered with lots to tempt the real ale fans. We congratulate Glyn, Phil and all their team for the excellent job they are doing to make the pub such a welcoming place.

CHAMPIONS TABLE

BARNSELY CAMRA AWARD WINNERS

The Dog & Partridge

Hazlehead - Flouch
Winter 2005/06 Pub of the Season

The Cock Inn

Birdwell
Autumn 2005 Pub of the Season

The Ring O' Bells

Silkstone
Summer 2005 Pub of the Season

Darfield Cricket Club

Darfield
Club of the Year 2005

The George & Dragon

Barnsley
Pub of the Year 2005

The Huntsman

Thurlstone
Spring 2005 Pub of the Season

L	C	I	B	S	N	V	F	
P	V	N	I	T	C	B	S	N
U	S	B	N	V	I	C	L	C
V	N	P	T	C	I	S	B	S
S	B	L	V	N	I	C	L	C
C	I	L	T	S	B	S	N	N
L	I	C	L	I	C	L	I	C
B	U	S	L	I	C	B	S	N

< page 19
< on puzzle
< Solution to

Our Advertisers at a Glance

- Thwaites Lancaster Bomber - Back Cover
 - Sir Georges Arms - Wombwell - Page 20
 - The Gatehouse - Barnsley - Page 16
 - The Cock Inn - Birdwell - Page 12
 - The Hillsborough Hotel - Sheffield - Page 6
 - The George & Dragon - Barnsley - Page 4
 - The Devonshire Cat - Sheffield - Page 18
 - The Huntsman - Thurlstone - Page 2
 - The Moulders Arms - Barnsley - Page 10
 - Kelham Island Tavern - Sheffield - Page 4
 - Acorn Brewery - Wombwell - Page 8
 - The Commercial - Chapeltown - Page 4
 - The Furnace Inn - Hoyland - Page 2
 - Tom Treddlehoyle - Pogmoor - Page 20
 - The Keel Inn - Barnsley - Page 4
 - H.B.Clarks Brewery - Wakefield - Page 16
 - The Horseshoe - Wombwell - Page 20
 - National Legal Services - Barnsley - Page 2
 - The Fitzwilliam Arms - Elsecar - Page 16
- Thanks to our advertisers the BAR is FREE.
Mention you've seen their advert in The BAR



Fund Raising Total Update
Money Raised for the Riding School
for the Disabled up to January;
£1563.40 to date Thank You

Britain's Number One Beer and Pubs Guide

Good Beer Guide 2006

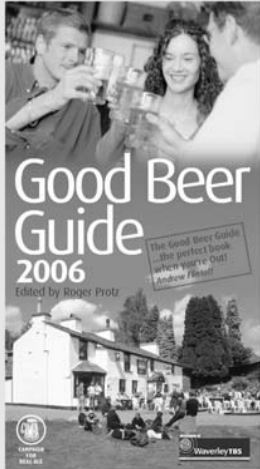
"The Good Beer Guide... the perfect book when you're Out"
Andrew Flintoff
England Cricket All-Rounder

This best-selling guide provides details on 4,500 of the best real ale pubs in Britain today. All pubs listed within the guide serve good-quality real ale and are inspected throughout the year to ensure a consistently high standard.

Every entry contains contact details for each pub as well as descriptions and information on the choice of real ales, food and suitability for families. This beer lovers' bible also contains information on all Britain's breweries with tasting notes for real ales brewed in the UK.

Edited by Roger Protz, the Good Beer Guide 2006 is available direct from the Campaign for Real Ale, RRP £13.99 but just £10 plus £1 p&p (in the UK) for CAMRA members. Call 01727 867201 to order or buy online at www.camra.org.uk/shop

Published in September 2005



01727 867201 www.camra.org.uk/shop

Barnsley Trading Standards.

Not satisfied with the amount of beer in your glass?
Ask for it topping up.
Still not satisfied?
Contact Barnsley Trading Standards on 772532
And write to your MP.

www.barnsley.gov.uk

YOUR ADVERT IN THE BAR

Advertise your Pub, Club or Service here in the pages of **THE BAR.**

With a circulation of 2000 copies bimonthly, the BAR is an ideal and affordable publication to promote your business. Only £18.34 for a 1/4 page when you take out an advert for a year, 6 issues . (£110)

For more information contact

Margaret Croft
01226 714492
Margaret@yourpint.com

Licensed Taxis and Private Hire Cars

Barnsley Area	Map Cabs	388888
A1	Roy's	381868
Anne's	Monk Bretton Area	
Bobs	Brian's	218742
Blue Line	KG	285583
Direct	Penistone Area	
Elite	Greys	767608
Link	June's	764939
Regency	Macca's	764919
Barugh Green Area	P&A	767936
Allways	Royston Area	
Birdwell Area	Arran's	700776
Marion's	Phoenix	722200
Carlton Area	Royston	722277
A Plus	Shafton Area	
Cudworth Area	Beebee	716586
Clarkey's	Silkstone Area	
Darton Area	A-Line	790207
KS	Wombwell Area	
Darfield Area	Bella Cabs	213137
P&J	Clover	214040
Grimethorpe Area	Merlin	757000
Andy's	OY	759000
Heva's	Worsbrough Area	
Hoyland Area	Daley's	292769
Croft	J&M	751414
HPH	WPH	749555
Mapplewell Area	DON'T DRINK AND	
Al's	DRIVE - EVER!	

Champion Beer of Barnsley 2005

Acorn Brewery of Barnsley's Old Moor Porter

The multi award winning Old Moor Porter is based on an 1890s Victorian porter. Dave Hughes and his brewing consultant Dave Smith developed the recipe in 2003. They wanted to produce a quality dark beer they could brew and sell all year round.

Crystal and Black malt, and Chocolate malt in abundance combine to produce a luscious dark chocolate porter. The Crystal and Black malts produce masses of caramel in the boil, which comes through in the porter as treacle, coffee and rich fruitcake flavours that also reduce the sweetness of the chocolate.

With an original gravity of 1045 it's brewed at a present gravity of 1010.5, which holds in more of the rich dark chocolate flavour and makes the porter silkier.

Challenger hops are added to the kettle to balance the sweetness.

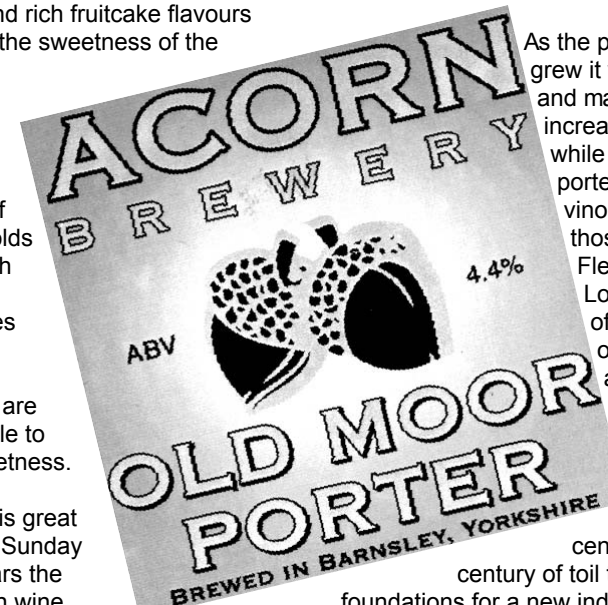
Old Moor Porter is great for drinking after Sunday dinner, as it clears the palate better than wine.

Brewed continually since September 2003, it is named after the Old Moor Wetlands, which are close to the Acorn Brewery.

In 2004 Old Moor Porter won the Society of Independent Brewers Associations (SIBA) National Champion Porter, Old Ales and Stout. More recently it won the Beer of the Festival at the Barnsley beer festival and

was Festival-goers' Choice at Wakefield's Merrie City festival.

Romantic folk tales mystifies the origins of porter, which dates from the late 17th Century. Porter takes its name from the many porters who carried goods of all kinds around the docks and streets of London. Porters drank the beer to give them strength and nourishment as they laboured with their heavy loads. The strength of Georgian porters was around 7% ABV.



As the popularity of porter grew it was fermented and matured in increasingly large vats, while ageing Georgian porters acquired tart vinous flavours like those found in Flemish Oud Bruins. Long-aged porters often formed a skin on top, which allowed the beer to age gracefully like a maturing sherry.

The eighteenth century was the century of toil that laid the foundations for a new industrial world. Porter was the beer of that century. It was the food and fuel of the industrial revolution, but when the new world was built there was no place for Porter; Pale Ale, which was cheaper to produce, became the drink of the masses.

35 years ago when CAMRA started, porter was the beer that time forgot, Old Moor Porter is unforgettable. *Jeremy Sykes*

REAL ALE TALES

**Sobering Stories for
Dedicated Drinkers**

- by Chris Francis -

*Nine Tales of Murder, Mystery and
the Supernatural
based on English Pub Names*

£3.50 INCLUDING P & P

Order yours now from
realaletales@yahoo.com

Or Tel: Crusader Books 01377 270999

Beer Is Just Clean Fun

A German priest has developed a novel way to brew beer -- in a washing machine. Michael Fey, 45, a Catholic priest from the western city of Duisburg, came up with the idea of converting his 35-year-old top-loader to provide beer more cheaply for events he organises.

"All I needed was something that could be used to heat and stir the mix... so why not a washing machine?" said Fey, who now uses another machine for his clothes. His machine brews 40 pints of beer in 10 hours.

Fey said his unorthodox brewing method has made him consider experimenting with new flavours: "I recently read about some beer made with chillies. Now that could be interesting."

Are You A Beer Geek?

What exactly is a beer geek? We all know what "beer" primarily is: water, malt, hops and yeast. www.dictionary.com defines Geek as;

- 1, A person regarded as foolish, inept, or clumsy.
- 2, A person who is single-minded, one who might have a strong talent or capacity towards a specific interest or technical pursuits but is felt to be socially inept.
- 3, A carnival performer whose show consists of bizarre acts, such as biting the head off a live chicken.

The second, as applied to the term in question, refers to one who might have a strong inclination, talent or capacity toward a specific interest. So with this, and pulling from my experience, the true meaning of a beer geek is one who is absolutely infatuated with beer and the pursuit of knowledge pertaining to all things beer.

So are you a beer geek? If at least three of the following statements describe you, chances are ... you're a beer geek.

You spend up to 30 minutes in an Off License - the same one you were in just last week, for 30 minutes. You've spent up to £30, or even more, and even £10 on one single bottle of beer, so you can cellar it and drink it at some unknown but special occasion.

You have a second fridge dedicated solely to beer. You plan your holidays around where you can find good beer, and attempt to visit every pub in the Good Beer Guide within a 20 mile radius and visit any Beer Festival on route there and/or back. You're also close to being single again, or already are, because of it.

People at work refer to you as "the beer guy." You like it and feel warm every time you hear the words. But you're still shy, socialising with other beer geeks, but only after you've gotten to know them. Everyone else seems like they're from a different world.

You collect one or more of the following: beer labels, beer trays, beer mats, beer caps, beer T-shirts ... you get the point. Oh, and you know what "breweriana" means, and that it's not a small brewing town near Burton On Trent inhabited by brewing hippies.

When out to lunch, you order a beer and explain to the soft drinks drinkers before you the relaxing, social and nutritional benefits of a beer at lunch. You are also known to walk out of pub/bar that don't serve real ale, and refuse to eat at those that don't even serve a good bottled beer.

You own one or more books by Michael Jackson, or at least you know that we're not referring to the king of pop. Also, you read publications dedicated to beer or go to sites like www.beeradocate.com and www.ratebeer.com for hours on end.

You've gotten into arguments over beer, because you knew that everyone else was wrong, and you were right. And you were. Of course you were.

You can drink more than all of your friends without making a complete ass of yourself.

You send back an improperly served beer at the bar; i.e. served in a warm glass, short measure, stale beer. And you get annoyed if you have to wait too long at the bar for a drink.

You always have at least 1 beer related birthday card and Christmas card.

So how did you do? Is it "Welcome to beer geekdom" for you? If so, don't be ashamed.

Embrace your inner beer geek and have fun with it.

Respect beer.

BREWED IN BARNSELEY ... WHERE ELSE!



ACORN BREWERY OF BARNSELEY

BREWERY TOURS BY ARRANGEMENT

**CONTACT THE BREWERY FOR OUR RANGE OF
SEASONAL BEERS AND MERCHANDISE**

TEL: 01226 270734; FAX: 01226 270759

Sir Georges Arms



Hough Lane
Wombwell
Tel. 01226 753092
(2 mins from station)

Andrew and Anita Binns
offer a warm and friendly
welcome to all.

Traditional Pub Atmosphere
Beer Garden

Three Cask Ales including Magnet and Two
Rotating Guest Beers from Local Breweries.

Free Pool Tuesday and Thursday
Sunday Evening Quiz
Live Entertainment

Free Function Room Available
Monthly Entertainment and Theme Nights

Open Monday to Thursday 6 - 11pm
Friday 3 - 11pm; Saturday 12 - 11pm
Sunday 12 - 10:30pm

Only 3 mins walk from Wombwell
train station



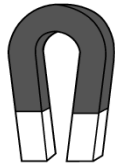
AREAS

TOM TREDDLEHOYLE

Tel. (01226) 290621

POGMOOR ROAD, POGMOOR, BARNSELY

JOHN SMITH'S



CASK BEERS

Monday to Thursday - 3pm to Midnight
Friday - 3pm to 1am
Saturday - 11am to 1am
Sunday - 11am to Midnight

AWAY ALES February March

By *Laurence Mace*

Barnsley have reached the heady heights of fourth place in the division as I write! After the heavy winter run of matches, we now face a set of four away games for February and March where we'll need to pick up as many points as possible to keep our promotion challenge going. Using CAMRA's 2006 Good Beer Guide we'll at least head the right way for a great pint.

Saturday 11th February: Doncaster

This year's Good Beer Guide offers five real ale pubs to pick over for Doncaster. Last season we explored the Salutation so today we'll visit the Plough on West Laith Gate. A recent addition to the CAMRA's National Inventory of historic pub interiors, the Plough was altered in 1934 and remains much the same today. A drinkers' pub near the Frenchgate Centre, it attracts mature discerning clients. Longstanding hosts promote a comfortable, friendly atmosphere making it an ideal break from shopping. Choose between the light informal bar or the relaxing, comfy lounge. On warmer days sit in the tiny covered courtyard and admire the stained glass windows. The handpulled ales are usually Draught Bass and Acorn Barnsley Bitter. Open 11am to 11pm Saturdays. Tel: (01302) 738310

Saturday 18th February: Tranmere

Only the one entry in this year's Good Beer Guide for Birkenhead, the main town nearest Tranmere's ground and we haven't featured it before in 'Away Ales' even though it's a regular Guide entry. The Old Colonial at 167 Bridge Street is a friendly town pub, attracting office and factory workers at lunchtime and loyal regulars at night. Tastefully restored by its present owners Cain's brewery, entertainment is provided most evenings including a jazz band on Thursdays. Beware heritage trams crossing the car park entrance; the first street tramway in Europe

was introduced in Birkenhead in 1860. The pub is only a ten minute walk from both the Merseyrail network and the bus station. Permanent beers include Cains's Mild, IPA, Bitter and FA, whilst guest ales are also available. Open 11am to 11pm Saturdays. Tel: (0151) 647 1560

Saturday 11th March: Brentford

Having previously featured all three entries for Brentford from the Good Beer Guide over previous seasons of 'Away Ales', the South Ealing entry just up the road from Griffin Park affords a convenient alternative. The Ealing Park Tavern at 222 South Ealing Road is only ½ mile north of the ground, just the other side of the M4 motorway. This is a large 18th century pub, rescued from mediocrity by its recent conversion into a gastro-pub which also saw a reversion to its original name. Five hand pumps in the spacious front bar serve an ever-changing variety of beers, often from unusual breweries. The restaurant serves excellent contemporary English/European dishes and unusual bar snacks are available in the other areas. Open 11am to 11pm Saturdays. Tel: (020) 87581879

Saturday 18th March: Hartlepool

The 2006 Good Beer Guide gives three choices for Hartlepool and we'll choose one near the railway station. Jackson's Arms on Tower Street, south of Church Square, is an excellent street corner pub marked by a hanging sign depicting Ralph Ward Jackson, founder of West Hartlepool. The bustling bars have leather wall seating, one catering for pool and darts players. Four handpulls dispense an ever changing choice of guest ales often from small or micro breweries. The pub has a strong sense of local identity but provides a warm and friendly welcome to regulars and strangers alike. Open 12 noon to 11pm Saturdays. Tel: (01429) 862413

Excellent Range of Real Ales
All Day Menu
Fine Selection of Wine
Children Welcome
IN THE 2006 GOOD BEER GUIDE

THE HORSESHOE

Sun - Thu 9am - midnight; Fri/Sat 9am - 1am

Food Served Daily 9am to 11pm

Wheelchair Access - Large Screen TV's


Designated Non-Smoking Area

30 High Street, Wombwell

Tel. 01226 273820

THE MOULDERS ARMS
 Open Mon - Thurs 4.30 - 11pm; Fri 2.30 - 11pm
 Sat 12noon - 11pm; Sun 12noon - 10.30pm
 49 Summer Street - Barnsley
 A Warm Welcome From Kevin & Irene

GOOD BEER GUIDE 2006 WE ARE IN IT!
JOHN SMITHS THE CASK
 PLUS A WEEKLY CHANGING GUEST BEER
 Nostalgic Disco Music & General Knowledge Quiz Wed Buskers Night Fri
 Special Occasions Catered For



Pub of the Season Winter 2002/03
 01226 215767

The Perfect Pint... Glass

Historically, drinking vessels were made from wood, leather, stoneware, or whatever else may have been handy. The historical replica Fraoch Heather Ale uses a traditional stoneware glass, and many Franconian lagers never stopped. The Belgians believe that each beer should have a custom-made glass, while other countries such as Britain tend to use



generic styles affixed with the brand's logo, such as Guinness, Fosters and John Smiths. As beers of different styles have distinctive characteristics, the appropriate glasses for each style will be the ones that

accentuate those characteristics. As a rule, the more distinctive the beer, the more distinctive the glass should be. This is why you find mainstream lagers served in stock glasses or without bothering with a glass at all. (Well that explains the Fosters and Smiths branded glasses then, ED). But a unique product such as Berliner Weisse demands an equally unique glass. Indeed, using the wrong type of glass for some products will reduce the quality of the experience due to inappropriate head formation, poor aroma release, or by failing to accentuate a particular beer's sparkling/cloudy nature.



Ads & Publicans

N T H E K E E L I N N A T I O N A L S H Y P
 G U F I T Z W I L L I A M A R M S B E I E S
 E T O M T R E D D L E H O Y L E W E C L L E
 O K K N N I E C A N R U F E H T T H I L S E
 R R E E T H W A I T E S B O M B E R V S N S
 G A P L U T H E H U N T S M A N B F R B R O
 E R Y O H U Q D K T P R J L K N X W E O A T
 A H S M R A S R E D L U O M E H T K S R B H
 N Z S T E R M Q M G B Y J K N H T L L O F E
 D K Y I N S Y I P V X R T G K L A P A U O D
 D L H M R Q U N S F M H H K R I N B G G Y E
 R N F T X G L O S L E K B D C F M X E H R V
 A K F K M C E K H H A W G R V T Q W L H E O
 G P B R N W R O O E B N E J H V K T L O W N
 O J P V F A J R R B T M D E F R Q L A T E S
 N F M L L L S M L G M A C T G D N R N E R H
 M M M C B E J T N O E O G V A K L M O L B I
 X R B R S T X Y C M C S Z E K V N F I X N R
 T H L H G R N E T K T Y A P H Y E M T M R E
 M M O L X D H Z I P W T M R B T K R A J O C
 P E T K C T T N H K Z J F N M K J R N C C A
 W R R Y T V N V F F G Y B M H S T M R L A T

PRIZE WORDSEARCH.

Another chance to win 4 pints of Real Ale from your choice of one of the advertised pubs.

Congratulations to Les Key from Barnsley who was the first correct entry drawn from our entries in January. Les says he will be enjoying his free beer in the Horseshoe, Wombwell.

Just find all our advertisers in the grid. They can go horizontally, vertically and diagonally in all eight directions. When you have them all find the hidden message by using the un-used letters.

Look for the advertisers within the pages, a full list is on page 23.

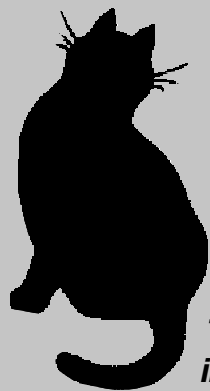
Send the hidden message along with your name, address and which pub you would like your real ale from the advertisers list to Nigel Croft either by email, post or text - also state you are 18 years of age or older. (Address and number on page 26). Closing date is **Friday 3rd March 2006**.

The winner will be the first correct answer drawn from the entries. Draw to be made 4th March 2006. One entry per person only. Good Luck!

PUBLICANS
 The puzzle on the left is just a SUDOKU - honest... THIS Sudoku's rules are extremely easy: Fill all empty squares so that the letters from the word PUBLICANS appear once in each row, column and 3x3 box. Solution is on page 23

Play these On-Line at www.yourpint.com

	U	S		I		A		
	L				A	S		B
N				U			L	
	N				S	U		C
C		L	N				B	
			U		C		P	A
			I		P		B	
U				C				A
	A		S		B			L



The Devonshire Cat

*Devonshire Green
Sheffield*

The Devonshire Cat is a completely independent pub offering an enormous range of interesting beers; we hope you will experiment with many different styles and flavours available. Some you will love, others you may not, but finding those you love is part of the fun



12 Real Ales on at All Times:

- 7 Guest Ales
- 5 Permanent - The Devonshire Cat Best Bitter, Caledonian Deuchars IPA, 2 Abbeydale beers and Theakston Old Peculier.



12 Continental Draught Beers:

- Including Erdinger, Liefmans Frambozen, Fruli, Leffe, San Miguel, Amstel and Warsteiner and a guest Belgian Beer. We are now the only pub in Sheffield to sell Paulaner Wheat Beer on Draught!



100+ Bottled Beers from Around the World:

- Belgium, Germany, Czech Republic, Britain, USA, Austria, Australia, Corsica, China, Indonesia, Italy, Kenya, Mexico, Sri Lanka and Thailand.



Traditional Cider Straight from the Barrel:

- We sell 2 guest Saxon Ciders. They are similar to Scrumpy cider with something extra as they are brewed by an Italian who has added his own style to the ciders.



Homemade Food Served Until 8pm Everyday:

- We take as much pride in our food as we do in our beer. All our food is prepared on the premises, not pre-packaged like all the pub chains. Here at The Devonshire Cat we believe that the best thing to accompany a great meal is a great beer, so each item on the menu has a recommended beer.

The Devonshire Cat - 49 Wellington Street, Sheffield S1 4HG



www.devonshirecat.co.uk ☎ 0114 279 6700

Lyn In The Kitch' in BY Lyn Liversidge

Tewahdiddle

From Chaucer to Shakespeare to the present time, writers and poets have sung the praises of beer. We have inherited a superb array of beer based drinks whose names are both fascinating and, in some cases, incomprehensible. This is just one of many. Some of these drinks were drunk for medicinal purposes as well as pleasure and this one tasted great! It also gave Dave a good 12 hour kip! Perhaps we should market it as a cure for insomnia?



You need:

- ½ pint of Pale Ale (I used Vale Pale Ale, 4.5%, Brewster's Brewery)
- 2 tsp Brandy
- ½ tsp brown sugar
- 1 slice lemon
- ¼ of a nutmeg (grated)

Forthcoming Beer Events

- February 3rd and 4th** - Chesterfield Beer Festival, the Winding Wheel, Holywell Street, Chesterfield. 80+ Beers.
- February 15th to 18th** - Rotherham Oakwood Real Ale and Music Festival. 225 Beers, full details on page 13.
- February 21st to 25th** - National Pubs week Beer Festival at the Gatehouse, Barnsley. 20 beers (see page 12).

Then you:

Stir the beer, brandy and sugar together until the sugar is dissolved. Pour into a glass and add a slice of lemon. Grate the nutmeg over the top. This can be served hot or cold. Dave warmed his through in the microwave, I had mine cold and both were just as good.



Brewster is the old English name for a female brewer, Sara Barton is the master brewer at Brewster's brewery.

The brewery is located in the Vale of Belvoir , Melton Mowbray, Leicestershire.

The beers from the brewery range from Hophead at 3.6% abv which is a session beer to Belly Dancer at 5% abv ruby-red warming beer.

Beers like these can be offered in some outlets in Barnsley, but you need to convince your landlord/landlady that you just don't want the usual common beers as the guest beer.

- February 23rd to 25th** - Bradford Beer Festival, Victoria Hall, Saltaire. 100+ Beers.
- March 16th to 18th** - (TBC) Leeds Beer Festival, Pudsey Civic Hall, Dawson's Corner, Pudsey
- April 21st and 22nd** - St Georges Beer Festival weekend at the Mallard, Worksop Train Station. 18+ Beers.
- October 26th to 28th** - (TBC) Barnsley Beer Festival at the Keel Inn, Canal Street, Barnsley. 30 Beers.

Yorkshire Traction
Day Tripper £3.50 — All The Way — South & West Yorkshire



The Cock Inn

UNDER NEW OWNERSHIP

Quiz Night
Thursday & Sunday From 9pm
Selection of 4 hand pulled cask ales

3 Course Sunday Lunch £10
Any 2 Courses for £7.50
(Booking Only Please)
Friday Fresh Cod Loin
Thursday Steak Night (10oz Rump) £5.50
New Menu Available
Pre-Order Welcome

Large Beer Garden & Summerhouse
Children's Play Area
**A Warm Welcome With
Comfortable Surroundings
& Real Open Fire Awaits You!**

MEALS SERVED - MONDAY TO SATURDAY 12 - 2pm & 5.30 - 8pm - SUNDAY 12 - 3pm

Pilley Hill • Off The Walk • Birdwell • Tel: 01226 742155
Barnsley CAMRA Pub of the Season - Autumn 2005

The Gatehouse February Beer Festival 21st to 25th

The Gatehouse on Eldon Street, Barnsley will be celebrating National Pubs Week (18th to 25th February) with a Beer Festival.

The festival will feature over a dozen breweries both local and from further afield. Breweries earmarked are Roosters, Acorn, Copper Dragon, Wentworth, Springhead and Kelham Island. Also beers from Black Sheep and Greene King plus many more.

Robert Rudge the landlord of the Gatehouse has been eager to put on such an event since opening the pub back in July last year. He said "National Pubs Week seems like the perfect opportunity to showcase a wonderful choice of Real Ales, I know CAMRA members in the area will appreciate the event, but I think this is also a chance for beer and lager drinkers who only drink smooth or keg products to give real ale a try."

This is the first Beer Festival in the Gatehouse and it runs from Tuesday 21st to Saturday 25th February. There will be around 20 Beers and Cider as well as Continental Bottled Beers. The Festival opens 11am -11pm each day and admission is completely FREE. A raffle with the proceeds going to the PDSA will be running throughout the event and drawn on Saturday evening.

Food is also available 12 till 2.30 and 5 till 7 Tuesday to Friday and 12 till 4 on Saturday. Further details about the festival can be found at the Gatehouse.

Binge-Drinking An Age-Old Problem

A culture of 24-hour drinking and bingeing on alcohol may not be unique to modern society, say historians.

Experts have uncovered evidence that 12th century Britons drank ale by the gallon, starting at breakfast time, due to poor quality drinking water.

The Cities many drinking dens entertained 'immoderate quaffing by fools', according to a writer of the time. (No change there then, ED)

Looking back only 700 years, London alone had over 1,300 alehouses - one for every 50 people living in the city.

John Clark, curator of the Medieval London gallery, said: "Most people, including children drank ale made from malted barley but without hops. They even drank ale for breakfast, and got through up to a gallon, or four-and-a-half litres, eight pints, a day each. At a price of a penny per gallon, only the poorest people had to make do with the water."

However, he pointed out that this ale was much weaker than the beers people drink today. Food was sometimes available in the

Alehouses, this would have been bread and cheese, but was often only available for travellers to the pub.

Dave Hughes, head brewer of Acorn Brewery which produces the modern version of medieval beers - Real Ale said: "The water was often contaminated, tea and coffee were not even known in England so Ale was the preferred drink at the time. Ale was safe to drink because of the boiling of the beer in the process and the production of alcohol during fermentation destroyed most of the bacteria,"

During the 1400s, beer brewed with hops, became increasingly popular throughout Briton and quickly started replacing traditional ale.

Imported wine was also popular at the time for those who could afford it, according to experts.

But Mr Clark said drinkers in the medieval Cities would not have gone on pub crawls for their ale because there were strict curfews to stop people wandering the streets of the cities at night.

"Instead, the regulars would stay in one pub drinking in the back room - a bit like a lock-in."

Want to Know More

The Museum of London at the Barbican is currently exhibiting medieval London, these including a selection of old Toby jugs, which depict tubby men with beer bellies. So take a cheap Midland Mainline Train to London (you can get singles from £6 at the moment) have an hour or two at the Museum and then have a nostalgic tour of some of London's wonderful real ale houses.

Nigel Croft



H.B. CLARK'S

The Core Range



H B CLARK FIRST BEGAN BREWING IN 1906, AND IS STILL VERY MUCH IN PRODUCTION TODAY. HENRY BOON CLARK WAS OUR FIRST MASTER BREWER, AND HE COULD NEVER HAVE IMAGINED THE STRENGTH, GROWTH AND SUCCESS OF THE BREWERY.



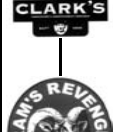
ONE OF THE HIGHLIGHTS WAS IN FULL VIEW, AND PROVED THE QUALITY AND SUCCESS THAT HENRY BOON CLARK FOUNDED WHEN, WITH HIS ORIGINAL RECIPE, CLARK'S TRADITIONAL WON FIRST PRIZE IN THE 1983 GREAT BRITISH BEER FESTIVAL, IN THE BEST BITTER CATEGORY.



RECENT ACCOLADES ALSO INCLUDE 'CLASSIC BLONDE' AND 'GOLDEN HORNET'



STILL AN INDEPENDENT, FAMILY OWNED BUSINESS, CLARK'S CONTINUE TO BREW EXCITING AND INNOVATIVE ALES.



OUR WEBSITE HAS ALL OUR FORTHCOMING BEERS WITH TASTING NOTES AND CAN BE FOUND AT:



WWW.HBCLARK.CO.UK
Contact Phil Owen - 01801 922473 or
your local depot for more details

FITZWILLIAM ARMS

42 HILL ST • ELSECAR

Tetleys Cask Bitter + 2 guest beers each week

The Fitzwilliam Arms is a popular and well-known pub situated close to Elsecar railway station. We offer comfortable surroundings with a warm and friendly atmosphere.

Lunch served 12-2 Tues to Sat

Open: 12-3, 5.30-11; 12-4, 7-10.30 Sun

Tel: 01226 742461

**We are in the 2006
Good Beer Guide**



Opening Times

Wednesday 15th February (CAMRA Members Only) 6pm to 11pm

Thursday 16th February (CAMRA Members Only) 6pm to 11pm

Friday 17th February 6pm to 11pm

Saturday 18th February 12 noon to 11pm

The bars will close for an hour on Saturday at 5pm. Soft drinks and food will be served during this interval.

Tickets for the public sessions (Friday and Saturday) are available in advance, priced £6. A festival ticket includes entry into the festival, plus a (non-returnable) festival glass to fill up with the beers of your choice. If you don't get a ticket before the festival and the festival is not full, the on-the-door price is £8.

Tickets will be available from several pubs and other outlets in Rotherham and Sheffield. You can also send for your tickets using this FREEPOST address - you don't need a stamp:

Oakwood Technology College

FREEPOST SF10424

Rotherham

S60 2UH

Why not join CAMRA before the festival and enjoy not only the benefits of CAMRA membership but also get into the festival on the CAMRA and Sponsor nights (Wednesday and Thursday) for only £1.50 or £3 on Saturday saving up to £5.

HELP IS REQUIRED AT ALL SESSIONS PLUS SET UP AND TAKE DOWN. WANT TO SERVE BEER THEN PLEASE VOLUNTEER NOW ON 07736288072



The Gatehouse BEER FESTIVAL

Open Monday to Saturday 11 - 11

**Eldon Street
Barnsley**

Tel. 01226 282394

21st to 25th February

Live Music every 2nd Thursday of the Month
Every 1st - 3rd - 4th Over 25s Disco - 60s - 70s - 80s
FREE FOOD - Raffle with proceeds to PDSA



www.pubpeople.com

**Six Cask Beers
Five Draught Lagers
Plus Continental Beers**

**Tea
&
Coffee
Served
All Day**

**LARGE
NO SMOKING
AREA**

FOOD SERVED

Mon - Fri 12 - 2.30 & 5 - 7
Saturday 12 - 4

National Pubs Week

Pubs - Past, Present and Future

EVENTS

There's A Pub For You

Sunday 19th February

Quiz Night at the Cock Inn, Birdwell and Sir Georges Arms, Wombwell

Monday 20th February

Buskers night at the Morning Star, Barnsley

Tuesday 21st February

Quiz Night at The Furnace Inn, Hoyland and The Huntsman, Thurlstone
Free Pool Night at the Sir Georges Arms, Wombwell
Beer Festival at the Gatehouse, Barnsley

Wednesday 22nd February

Live Music at the Huntsman, Thurlstone

Quiz Night at the George and Dragon and The Moulders Arms, Barnsley
Charity Quiz Night at the Miners Rest, Old Town
Beer Festival at the Gatehouse, Barnsley

Thursday 23rd February

Quiz Night at the Cock Inn, Birdwell
Free Pool at the Morning Star, Barnsley and the Sir Georges Arms, Wombwell
Beer Festival at the Gatehouse, Barnsley

Friday 24th February

Buskers Night at the Moulders Arms, Barnsley
Beer Festival at the Gatehouse, Barnsley

Saturday 25th February

Beer Festival at the Gatehouse, Barnsley

**NATIONAL
PUBS
WEEK**

18th-25th February 2006

Organised By



www.pubsweek.org