

# duo mix PLUS

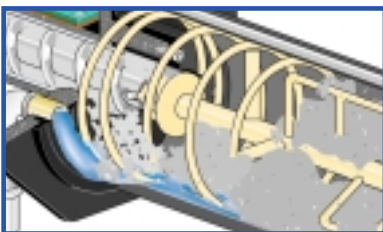
The mixing pump with the „PLUS“  
– for best mixing results.

The mixing pump with a „plus“

The **dual mixing system with two way mixing plus** the patented **sump principle**.

The **two separate wet mixing chambers** of the duo-mix plus guarantee **top quality mortar**, an even mix that is productive and free of cracks. All the **usual trade renders such as cementitious floor screeds can be processed**. We can offer relevant rebuild kits for special cases.

The machine is suitable for **bagged material, bulk material** (e.g. together with an m-tec silo and blowing system F100/140 or hurrican 100/140) as well as for **material in tubs**.



Sump area – here the material is sprinkled into the water.

#### Delivery Includes

- Mixing pump and compressor which switches off automatically
- Built in water pump
- Pump end pieces F35
- Reducing pieces M35/M25
- 1 maintenance free m-tec star model Stator including appropriate Rotor
- 1 mortar hose NW 25, 10m long
- 1 air hose, 11m long
- 1 spray gun
- 1 piece of equipment for blending
- 1 hose pressure manometer
- Various tools

Convincing advantages are:

- **Dual mixing system with two way mixing gives top quality mortar**
- **the latest mixing technology guarantees an absolutely regular material consistency, gone are the days of the infamous “Thick–thin–problem”**
- **Three pieces of equipment in one machine: mixing pump, mortar pump and continuous mixer.**
- **A wet mortar probe monitors the level of material in the second mixing chamber.**
- **Removable flange for applying various screw jackets according to customer requirement.**



**m-tec**<sup>®</sup>

m-tec mathis technik gmbh

Otto-Hahn-Strasse 6 Phone +49 7631 709-0  
D-79395 Neuenburg Fax +49 7631 709120  
www.m-tec-gmbh.de sales-tfs@m-tec-gmbh.de

# duo mix PLUS

## Technical Data

Conveying output	Between 5 and 60 l/min according to worm pump
Conveying width	Up to 60 m
Conveying height	Up to 30 m
Conveying pressure	Up to 30 bar
	The performance is dependent on both the material used, as well as the state of wear of the stator and rotor.
Drive motors	
Mixing area	3 kW, 230/400 V, 50 Hz, 260 Upm
Pump area	5.5 kW, 230/400 V, 50 Hz, 400 Upm
Air pressure current	0.9 kW, approx. 250 l/min, max. 4 bar
Water pump	0.75 kW, approx. 40 l/min, max. 6 bar
Electro connection	400 V, 50 Hz - current, Safeguard: 25 A, Connection value 23 A Supply 5 x 4.0 mm <sup>2</sup> , Pin device 32 A, 5 P, 6 h
Water connection	3/4" water hose with GEKA coupling, minimum 2.5 bar water pressure is required to run the machine
Dimensions (l x w x h)	Approx. 1350 x 640 x 1390 mm
Filling height for bagged material	1020 mm
Weight	Approx. 250 kg (with accessories)

### The new, patented sump mixing principle:

The mixing pump processes all popular dry mortar products with a grain size of up to three millimetres. The technical feature is the material opening from the dosing into the mixing areas. Water is no longer sprayed onto the material, instead material is dosed and sprinkled into a water channel and mixed, according to the sump principle.



**m-tec**<sup>®</sup>

m-tec mathis technik gmbh

Otto-Hahn-Strasse 6 Phone +49 7631 709-0  
D-79395 Neuenburg Fax +49 7631 709120  
www.m-tec-gmbh.de sales-tfs@m-tec-gmbh.de