



— MODEL — **136-01/636-01**
Solenoid Control Valve

INTRODUCTION

The Cla-Val Model 136-01/636-01 Solenoid Control Valve is an automatic valve designed to either close drip tight or open fully by means of a three-way solenoid control. It is a hydraulically operated, solenoid controlled, diaphragm type globe or angle valve.

INSTALLATION

1. Allow sufficient room around the valve assembly to make adjustments and for maintenance.

Note: Before the valve is installed, the pipeline should be flushed to remove all chips, scale and foreign matter.

2. It is recommended that gate or line block valves be installed upstream and downstream of the Model 136-01/636-01 to facilitate isolating the valve for maintenance.

3. Place the valve in the line with flow in the direction of flow arrows or by the inlet nameplate. Check all fittings and hardware for proper makeup and that no apparent damage is evident. Be sure main valve cover nuts/bolts are tight. Pressure in some applications can be very high so be thorough in checking and inspecting for proper installation and makeup.

4. Cla-Val Valves operate with maximum efficiency when mounted in horizontal piping with the cover UP; however, other positions are acceptable. Due to size and weight of cover and internal components of six inch valves and larger, installation with the cover up is advisable. This makes periodic inspection of internal parts readily accessible.

5. Comply with local and national electrical codes when wiring the Solenoid Control.

OPERATION AND START-UP

1. Prior to pressurizing the valve assembly make sure the necessary gauges to measure pressure in the system are installed as required by the system engineer. A Cla-Val Model X101 Valve Position Indicator can be installed in the center cover port to provide visual indication of the valve diaphragm assembly position during start-up.

CAUTION: During start-up and test procedures a large volume of water may be discharged downstream. Check that the downstream venting is adequate to prevent damage to personnel and equipment. If the main valve closes too fast it may cause surging in upstream piping.

2. If isolation valves (B) are installed in pilot system these open valves. (see schematic).

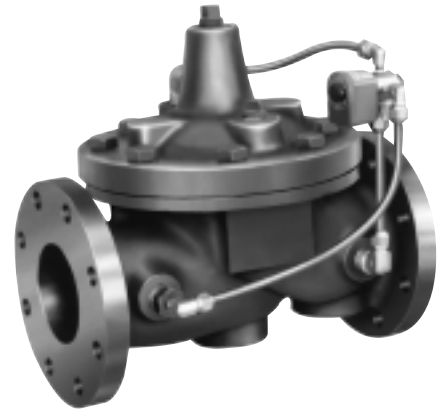
3. The 3-way Solenoid Control (2) applies or relieves pressure in the main valve cover chamber and provides the following action:

SOLENOID CONTROL (2)		ENERGIZED TO OPEN	DE-ENERGIZED TO OPEN
POSITION	PORT FLOW	136-01 SERIES	136-01 SERIES
		MAIN VALVE (1)	MAIN VALVE (1)
ENERGIZED	1 TO 2	OPEN	CLOSED
DE-ENERGIZED	3 TO 1	CLOSED	OPEN

Note: Solenoid are not reversible because of different internal construction between Energize to open and De-energize to open solenoids.

4. Slowly open the gate or block valves at the inlet of the main valve.

5. Carefully loosen tube fittings at highest points and bleed air from system. Carefully loosen the plug at top of main valve cover. If X101 Valve Position Indicator is installed, carefully open the bleed valve at to Indicator. Bleed air from cover and tighten plug or bleed valve. Tighten tube fittings.



6. Slowly open downstream gate or block valve. Check the operation of the valve by energizing and de-energizing the solenoid. The valve should open fully and close drip tight.

MAINTENANCE

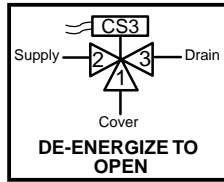
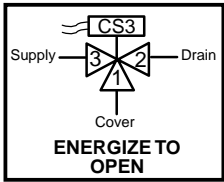
1. Cla-Val Valves and Controls require no lubrication or packing and a minimum of maintenance. However, a periodic inspection schedule should be established to determine how the fluid handled is affecting the efficiency of the valve assembly. Minimum of once per year.

2. Repair and adjustment procedures of the Cla-Val Hytrol main valve and control components are included in a more detailed IOM manual. It can be downloaded from our web site (www.cla-val.com) or by contacting a Cla-Val Regional Sales Office.

3. When ordering parts always refer to the catalog number and stock number on the valve nameplate.

SYMPTOM	PROBABLE CAUSE	REMEDY
Main valve Fails to Close	To low pressure differential across valve (Need 5 psi d Min under flowing conditions)	Restrict valve opening with Cla-Val X102A flow limiting assembly. (Contact Cla-Val)
	Closed isolation valves in pilot system, or in main line	Open valves
	Lack of cover chamber pressure	Check upstream pressure, tubing, needle valves for restriction
	Diaphragm damaged	Replace diaphragm
	Mechanical obstruction	Remove obstruction
	Object lodged in valve	Replace disc
Main valve Fails to Open	Worn disc	Replace seat
	Badly scored seat	Open this speed control to allow pressure to cover
	CNA needle valve closed	
Main valve Vibrates when closing	Closed isolation valves in pilot system, or in main line	Open valves
	Insufficient line pressure	Check pressure
	Diaphragm assembly inoperative	Clean & polish stem
		Replace any defective or damaged parts
	Air in cover	Bleed all air from valve

136-01/636-01 SCHEMATIC



BASIC COMPONENTS

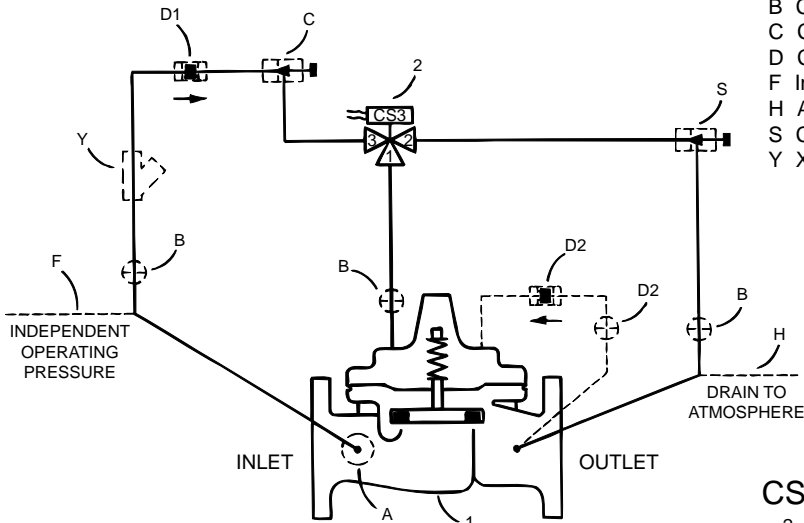
- 1 100-01 Hytrol (Main Valve)
- 100-20 600 Series Hytrol (Main Valve)
- 2 CS3 Solenoid Control

OPTIONAL FEATURES

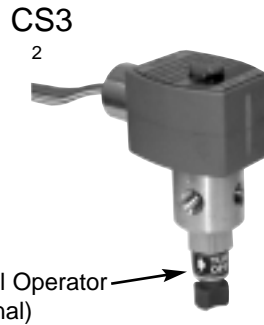
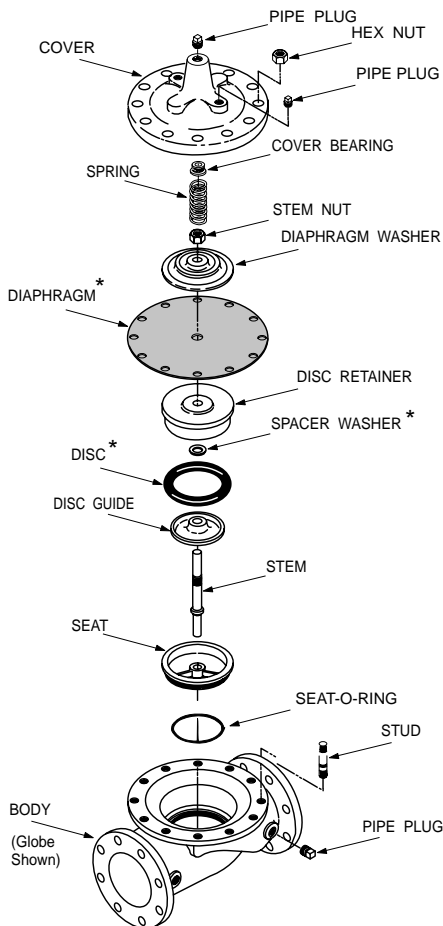
- A X46A Flow Clean Strainer
- B CK2 (Isolation Valves)
- C CNA Needle Valve (Closing)
- D Check Valves with Isolation Valve
- F Independent Operating Pressure
- H Atmospheric Drain
- S CNA Needle Valve (Opening)
- Y X43 "Y" Strainer

SOLENOID WIRING

Wiring must comply with local and National Electrical Codes. For valves equipped with an explosion-proof, watertight solenoid enclosure, the electrical fittings must be approved for use in the approved hazardous locations. Housings for all solenoids have connections for 1/2 inch conduit. The enclosure may be rotated to facilitate wiring.



1 HYTROL MAIN VALVE



X46A
A



Manual Operator
(Optional)

CK2
B



CNA
C



CDC-1
D



X43
Y



*SUGGESTED REPAIR PARTS

For a more detailed IOM Manual go to www.cla-val.com or contact a Cla-Val Regional Sales Office.