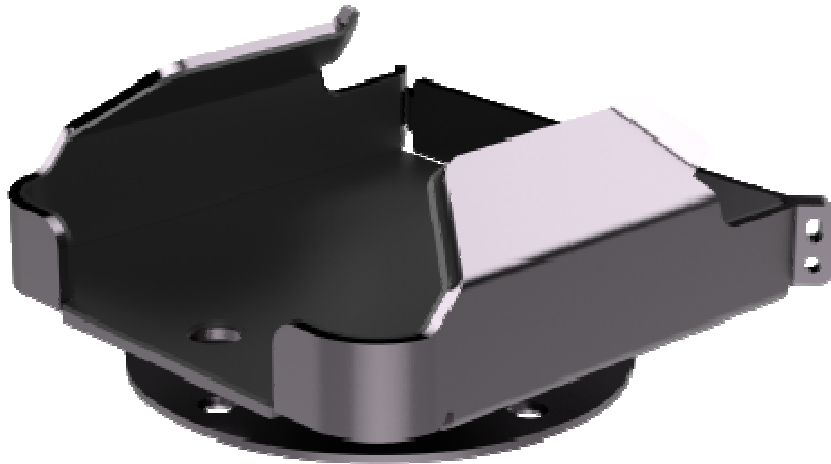


HoverCam Solo Mount



The HoverCam Solo Mount is used to securely mount Solo series document cameras to a lectern, table or AV cart. The camera may be rotated while bolted to the mount. The mount is made of metal and is durable, secure and stylish. The mount is easily bolted by using predrilled holes. All mounting hardware is included. Once fastened, the Solo mount can rotate a full 360 degrees. The Solo document camera securely slides into the base. You have the option to lock the document camera in the mount or to unlock and remove the unit. The inside of the mount is padded so it will not damage the base of the document camera.

HC-SM £53.99

HoverCam Ultra Mount



The HoverCam Ultra Mount (HCUM) is used to securely mount the Ultra document camera to a podium, lectern, cart or other surface so it cannot be moved and as a deterrent to theft.

HC-UM £44.99