

# Rivervale Primary Newsletter

ISSUE 5 Term 2 June 2019



It is hard to believe that we are already past the half way mark of term 2. NAPLAN went off without a hitch which was terrific as many schools faced issues. Teachers right now are completing final assessments to provide you with some useful information related to your child's learning/progress. This will be in the form of the semester report. Most teachers will check the "parent meeting required" box. This does not always indicate that there are issues. Sometimes teachers may want to explain your child's progress or classroom programs in more detail.

## Investigation area outside room 9

The children of room 9 have created a terrific little investigation area outside the classroom. Children are allowed to add items to the area. It was fantastic seeing the children add their little piece and discuss if it was man made or natural.

## SCHOOL HOURS

8:45am – 11:00am

11:00am – 11:20am—Recess

11:20am – 1:00pm

1:00pm – 1:30pm—Lunch

1:30pm – 2:50pm

**Early Close—Thursday  
2:30pm**

Classrooms open at 8:30am. There will be supervision available from 8:15am in the undercover area for children who arrive earlier than 8:30am.

Please phone or email us at the school if your child is going to be absent from school.

PH: 9277 1642

Rivervale.ps@education.wa.edu.au

# Next Assembly Room 7- Friday 28th June @ 2:00pm

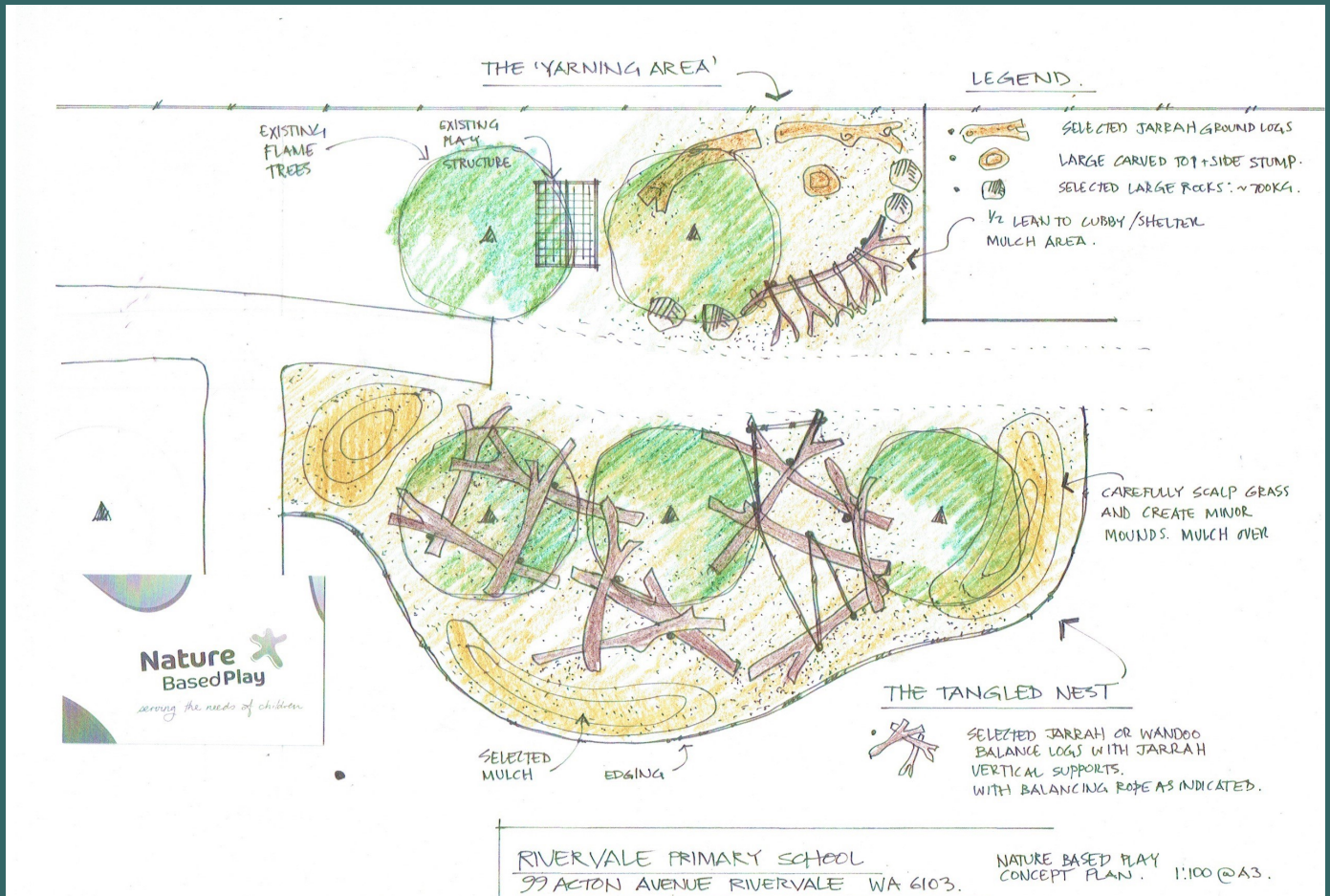
## Early years make a splash

Our TLC staff have implemented a great play idea for 2019. The children in TLC 1,2 and 3 are allowed to don raincoats and rubber boots and still enjoy outside play even if it is raining. The staff in the TLC are really invested in providing programs that connect inside and outside learning. The Walker Pedagogy being implemented in our early year's classrooms encourages all types of play and investigation. If your child is in kindy or pre-primary and you want them to be involved, you will need to ensure that they have a raincoat and boots. If you want to know more, call in and chat with the staff.



## Play Ground Upgrades.

As a school community we have spent a great deal of time and financial resources ensuring that we provide a school that is not only a great place to learn but also just a great place to be. This relates directly to our grounds and our playgrounds. A good deal of our play areas link directly with our PLAY PLAN which in turn links directly to our TOD values and Attitude, Behaviour and Effort. The idea behind this link is that we as staff can use the many teachable moments from breaks to reinforce great behaviour, great attitude and even some guided learning. The group in the school that has not been as well catered for in this regard are our year 4-6 students. Our observations of the trial PLAY PLAN have indicated that this group of children still need and want challenging and exciting play areas. The Rivervale Primary finance committee and Playground committee are





currently reviewing some playground plans. The idea of a Nature Play style area is being considered for the area next to room 1 and the workshop.

Recently we have some work completed in the lunch eating/passive area outside room 6. We think the results are great. We have increased the seating capacity and created a far more pleasant area for eating and sitting.

### **ROLA**

For the 5<sup>th</sup> year running, Rivervale PS will be competing in the Read Out Loud Awards. This is a terrific initiative run by the Belmont City Council/Library. The event will take place at Redcliffe Primary on Monday September 9. Ms Cooper is coordinating our team. 2 students from each year level (1-6) are chosen to compete. This year we are encouraging as many children as possible to have a go as we want to give lots of students a chance to read in front of an audience and to feel

confident when speaking out loud. All children that nominate will receive faction tickets (5). Those that make the team will receive 20 points for their faction and then of course have a chance to earn a first, second or third place medallion. If your child makes the team, then a note will be sent home with more information. Parents are most welcome to attend the event

### **Choir**

Ms Wiltshire and Ms Kibbler have been holding choir auditions over the past few weeks. We love having the Rivervale Choir and appreciate the efforts of our musically gifted staff. As the choir gains skill and confidence they will begin performing at assemblies.

### **Outdoor library**

Last week we opened our newest PLAY PLAN addition- the Outdoor Library. Part of the coordination of the Play Plan has involved asking the children what they would like to do during breaks. Quite a few children responded that sometimes they like an area where they can just sit and read or chat with their friends. The library was set up by Ms

Duffy our wonderful library officer and Ms Hodge our inspirational Manager



## of Corporate Services.**Shop a docket**

We have had quite a few enquiries regarding the collection of shop a docket. We're very fortunate at Rivervale to receive regular donations from Tony and his staff at the IGA on Kooyong Rd. We like to support local business as much as possible- especially those that support the school. Over the years the funds from IGA donations have been used to purchase reading resources, numeracy resources and sport equipment. For these reasons we do not get involved in the numerous programs run by the big shopping chains. If you are collecting the docket, then I would suggest giving them to a family friend or place them in the box of one of our neighbouring schools.

## **Non Binary Staff Professional Learning**

Recently all staff at the school were provided with some information on how to engage and understand children who may be "gender neutral" or "gender fluid" (non binary). In lay terms this relates to students that may not identify as a boy or a girl or a student whose sex at birth is not the one that they now identify with. This is an area in which schools (both primary and secondary), need to be more aware in. At the next School Council meeting we will discuss possible amendments to our school "Rights and Responsibilities of Students". After the meeting, any changes to the policy will be reported to parents.

## SCIENTISTS

You can almost hear the minds ticking as you pass by the science room. All year levels have been having great fun and learning experiences inside and outside with science. Not only are we providing exciting investigations in the classroom, Science has been linked to our PLAY PLAN. So far the children have been bug collecting with magnifying bug catchers and playing the chemist by mixing ingredients to form a variety of potions



## DATES TO PUT IN THE CALENDAR

Friday July 25 is a PUPIL FREE DAY – no school for students but still a work day for staff

Friday June 21- Winter Sport Carnival for years 3-6 at Redcliffe PS

### BCC SPECIALIST DRAMA PROGRAM 2020

In term 1 our year 5 /6 class worked with Brittany Lomax the Drama Coordinator from Belmont City College. Ms Lomax has been very impressed by the enthusiasm and ability of the group. 12 students have been offered a place in the BCC Specialist Contemporary Drama Program for 2020, if they choose to attend the College. The students selected are: Damon Bin Saad, Tansy Boyce, Paora Cross, Finn Egan, Alyssa Faneva , Tyzack Ireland, Princess Kumah, Amber Lafu, Rhian Mendoza, Shellbee Pickett, Darcy Samuel and Millie Yarran.

We appreciate the efforts of the College in providing the program and congratulate the students who excelled.

# HONOUR AWARDS



	Pre Primary	<i>Jade Cedillo, Cooper Egerton-Warburton, Ebad Rehman Abraham Ridsdale</i>
	Year One/ Pre Primary	<i>Kylan Gilkinson, Thu Uyen Vu</i>
	Year One/Two	<i>Yazhini Nagarajan, Zane Petterson, Dominic Roebuck-McCumstie, Kapish Kumar Thanikachalam</i>
	Year Two	<i>Abdi Khaliq Abdullahi Ahmed, Wilson Dring, Masumeh Ghulamnabi, Elham Ghullami, Abdial Hakim Sampi</i>
	Year Three/Four	<i>Cleveland Albert, Julia Chuwah, Xzavier Djiagween-Luke Dodd, Hritika Pun, Scarlett Ward</i>
	Year Four/Five	<i>Eva Dodd, Te-Tautahi Simon</i>
	Year Five/Six	<i>Krystalea Cross, Finnian Egan, Uni Heard, Amber Lafu, Dekozah O'Brien</i>



# KINDERGARTEN ENROLMENTS 2020

Kindy enrolments for 2020 are now open until 26th July 2019.

You can enrol your child in Kindy if they are 4 years old by 30 June 2020.

Please provide original birth certificate, immunisation history statement (from MyGov website) and proof of residency (eg electricity bill, rates notice) when handing in the application form. Application forms are available from the office or downloaded off our website; [www.rivervaleps.wa.edu.au](http://www.rivervaleps.wa.edu.au)



Once accepted, you will be required to complete enrolment procedures at the school. Parents should bring evidence of the child's legal name, immunisation records, immigration records (if applicable) and medical information. Any Family Court Orders or parenting plans registered with the Family Court should also be made available at the time of enrolment.

## A NOTE FROM OUR SCHOOL NURSE

### Influenza

Influenza, or the 'flu' is caused by an influenza virus. It is spread through the air when someone coughs, sneezes or talks. It is also spread by touching something that has the virus on it and then touching your nose, eyes or mouth. Common symptoms include sore throat, cough, fever, headache, chills, tiredness and muscle aches.

People with the flu should rest and drink plenty of fluid. Use paracetamol in recommended doses if necessary - but do not give children any medication containing aspirin.

Be sure to keep your child home from school while he or she is sick.

The best way to prevent flu from spreading is by washing your hands regularly and after coughing, sneezing or blowing your nose.

Flu vaccines are available prior to winter starting. For more information, contact your GP or local Immunisation Clinic.

### Why should I consider having my child vaccinated against the flu?

The National Health and Medical Research Council, Australia's peak body for health advice, recommends annual vaccination for anyone six months of age or older who wants to reduce their chances of becoming ill with the flu.

Annual flu vaccination is strongly recommended for anyone six months of age or older with a medical condition that places them at higher risk of severe illness from flu. Children and adults with heart, lung or kidney disease or a weakened immune system, are eligible for free flu vaccine through the National Immunisation Program. Children without underlying medical conditions who become infected with flu can also develop serious illnesses. Flu can cause high fever and pneumonia, and make existing medical conditions worse. Influenza viruses are always changing. Each year scientists try to match the strains of influenza viruses in the vaccine to those most likely to cause flu illnesses that year. It takes up to two weeks for protection to develop after vaccination against flu and protection lasts about a year.

The seasonal flu vaccine is available on prescription or via GP and immunisation clinics and is provided free for certain groups. Flu vaccines are available prior to winter starting.

For more information visit [healthywa.wa.gov.au/immunisation](http://healthywa.wa.gov.au/immunisation) or contact your GP or Immunisation Clinic.

We have close to 40% of our students whose Immunisation History statement has not been provided to the school. If there is an outbreak of a communicable diseases eg measles, whooping cough, influenza, these students will need to be excluded from school. Please ensure that your child has updated information given to the office as soon as possible. Immunisation History statement can be downloaded from the MyGov website.