



Annual Report 2018

Rivervale Primary School

"Making a Difference"



Educate Nurture Inspire

OVERVIEW

Rivervale Primary School is located in the inner city suburb of Rivervale, within the City of Belmont. It is in a quiet residential area which has a mixture of older houses and new townhouse developments. The school has a student population of around 200. Such small numbers at this boutique school have allowed us to build a strong relationship between students, staff, parents and the wider community. The Rivervale staff is a highly skilled, enthusiastic and motivated team who places a high emphasis upon *Making a Difference* through developing student academic and social skills, a sense of self-worth and ownership and pride in our school.

In 2018 the structure of the school centered around nine classes, with an on-site Pre-Primary and Kindergarten. The Kindergarten included an Early Start program for Aboriginal students (Kindilink).

Rivervale is a multi-cultural school with a reputation for being very inclusive. The school is home to an ethnically diverse student population. There has traditionally been a high rate of student mobility at Rivervale Primary School, due to many complex social issues, including housing, immigration and family circumstances. We have noticed a decrease in this mobility rate over the past 3 years, as more families buy houses in the suburb. Rivervale is now a suburb experiencing great renewal.

In 2018 the TLC (Tranby Learning Centre) continued to be the focal point for our early targetted intervention program. Early Intervention is a priority at the school. Early Intervention has become a vital part of our vision for Rivervale. Through our partnership with Edith Cowan University, we continue to implement Speech Therapy and Occupational Therapy programs. We also run a playgroup.

2018 saw the introduction of a Play linked Learning Pedagogy into our Kindergarten program.

Explicit teaching is an entrenched strategy, particularly in literacy and numeracy. All children are engaged in phonics, Letters and Sounds, Soundwaves and number facts programs. The Envision Math program was introduced in 2018. All teaching staff implement teaching strategies linked directly to student improvement targets. All teaching staff follow the WA Curriculum.

2018 saw us continue with major assessment of our Early Intervention and Literacy strategies. This meant a continuation of our SIP (School Improvement Program) which was first implemented in 2015. We initiated the improvement plan for our outdoor play and highlighted our desire to meet as many quality areas as possible on the National Quality Standards. The staff also embarked on a Play Program linked directly to the Treat Others Decently program. This is now called our Play Plan.

In term 4 of 2017 the SIP evolved into the Curriculum Support Program.

School Priorities

The School Priorities for 2018 were;

Literacy – Phonics and Writing

Numeracy

Early Intervention and

Social and Emotional Wellbeing – Play Plan

The strong focus on Literacy continued, but with a greater emphasis on explicit teaching, particularly in the phonics area of spelling with particular foci on phonological awareness and processing. All teachers use the Letters and Sounds program. We continued with our very dynamic, whole school writing program called Talk 4 Writing (T4W). This program had immediate impact on student writing and oral language,

We are proud of the safe and inclusive atmosphere here and have achieved this through many varied and exciting programs that reward attendance, respect and academic excellence. Many of our programs teach the students skills that enable them to become resilient, caring and productive members of the community. Rivervale students strive to be included in the “good standing fiesta” at the end of each semester. Our school values link directly to the attitudes, behaviours and efforts in the reporting to parents semester report.

STAFF

In 2018 we had a 95% staff retention rate. For the previous 9 years we have boasted a 95-100% staff retention rate each year.

Staff Profile

All teaching staff meet the professional requirements to teach in Western Australian public schools and can be found on the public register of teachers of the Western Australian College of Teaching. All teaching staff are performance appraised using the AITSL standards. Non-Teaching staff have performance management linked to the Competency Framework for Education assistants. You can read more about our staff and their philosophy on education on our website at www.rivervaleps.wa.edu.au

Teacher Qualifications

The qualifications of our talented staff include:

- Bachelor of English
- Bachelor of Education - Primary
- Bachelor of Education - Early Childhood Education
- Bachelor of Education - Special Needs
- Bachelor of Education - Education
- Bachelor of Arts - Psychology Major
- Bachelor of Communications
- Graduate Certificate in Early Childhood
- Diploma of Education
- Diploma of Education - Training and Development
- CSTD Teacher of Dance Theatrical
- Certificate of Teaching



Expenditure and Teacher Participation in Professional Learning

All staff have engaged in numerous professional development activities throughout the year, in their own time and during school hours.

Staff participated in the following Professional Learning during 2018:

- Professional Learning Graduate Module
- Literacy - Explicit Teaching (ECU)
- School Improvement and Accountability
- Classroom Management for New Educators
- Co-operative learning
- PATHS
- NQS/Framework
- Letters and Sounds
- PM Benchmarks
- Autism awareness training
- Talk 4 Writing
- Team Teach
- Speech and Language Professional Learning - ECU
- Kindilink
- Future Planning - Staff Professional for Admin Team
- Language Development Centre - Literacy Intervention
- Record keeping and accountability
- Aboriginal Cultural appreciation
- Ethical decision making
- Child protection and abuse prevention
- Excursion policy
- Students online policy
- Protective Behaviours
- Kath Walker Pedagogy

Student Attendance

One of our priorities over the past 5 years has been to increase whole school attendance to about 90% or over. We are now regularly reaching that target. We know that consistent student attendance at 90% or over is imperative to help bring about educational improvement.

Alongside this; we have invested a great deal of time into lowering the rate of unauthorised absence. The results have been remarkable. We have achieved nearly a 70% turnaround in this area over the past 7 years.

Absence Types Composition by Collection Period for RIVERVALE PRIMARY SCHOOL

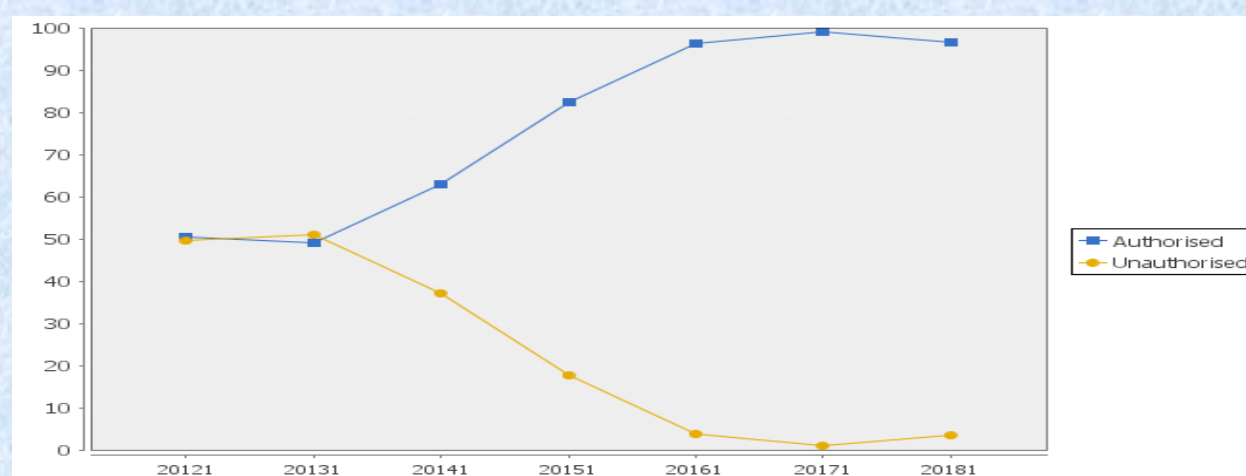
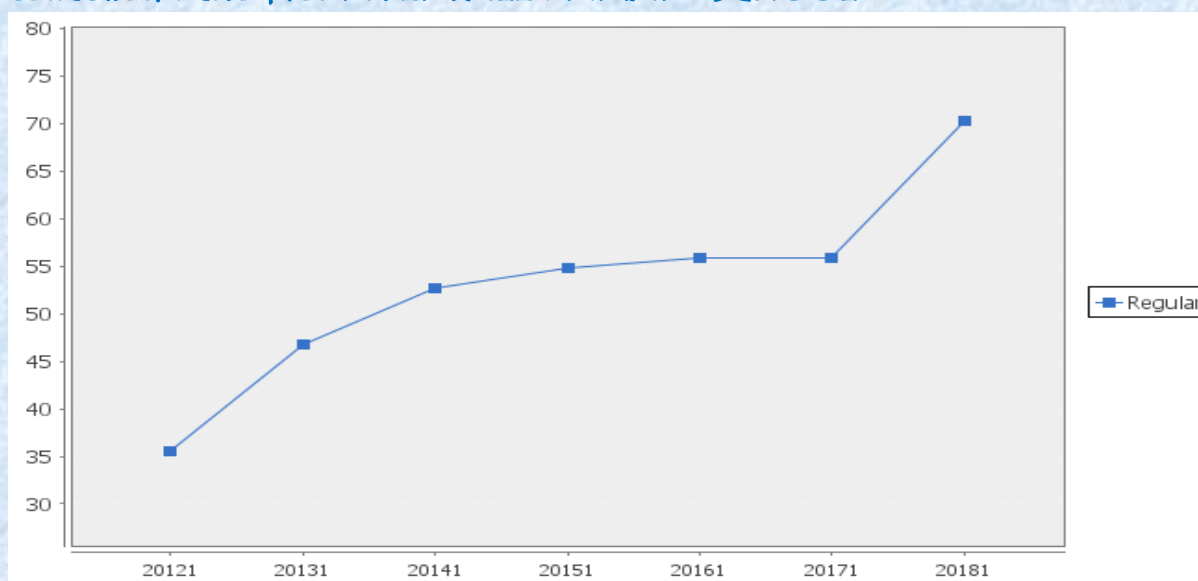


Table 3: Attendance Risk Category Analysis by Collection Period for RIVERVALE PRIMARY SCHOOL

Collection Period	2013 Sem 1	2014 Sem 1	2015 Sem 1	2016 Sem 1	2017 Sem 1	2018 Sem 1
% in Category:						
Regular Attendance	46.7%	52.7%	54.8%	55.9%	55.8%	70.2%
Indicated Risk	30.9%	18.2%	22.3%	24.2%	26.9%	22.0%
Moderate Risk	20.0%	20.2%	17.5%	12.4%	11.5%	6.5%
Severe Risk	2.4%	8.9%	5.4%	7.5%	5.8%	1.2%
No in Category:						
Regular Attendance	77	107	91	90	87	118
Indicated Risk	51	37	37	39	42	37
Moderate Risk	33	41	29	20	18	11
Severe Risk	4	18	9	12	9	2

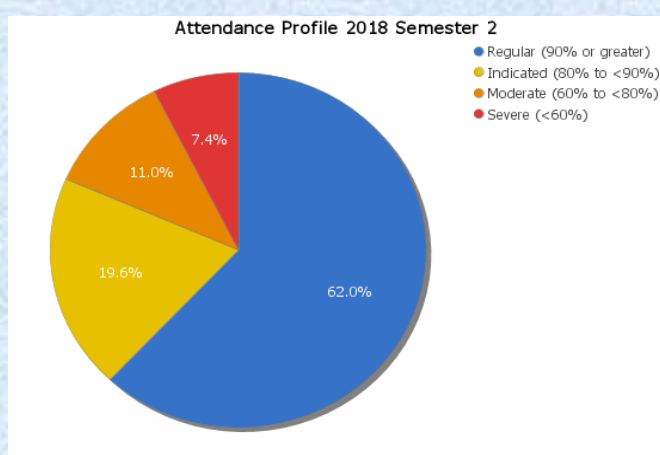
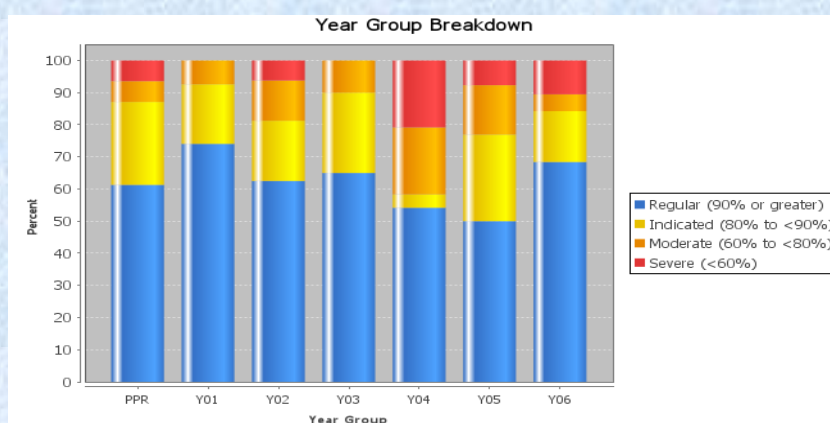
Table 4: Proportion of Students in Regular Attendance Category by collection Period for RIVERVALE PRIMARY SCHOOL



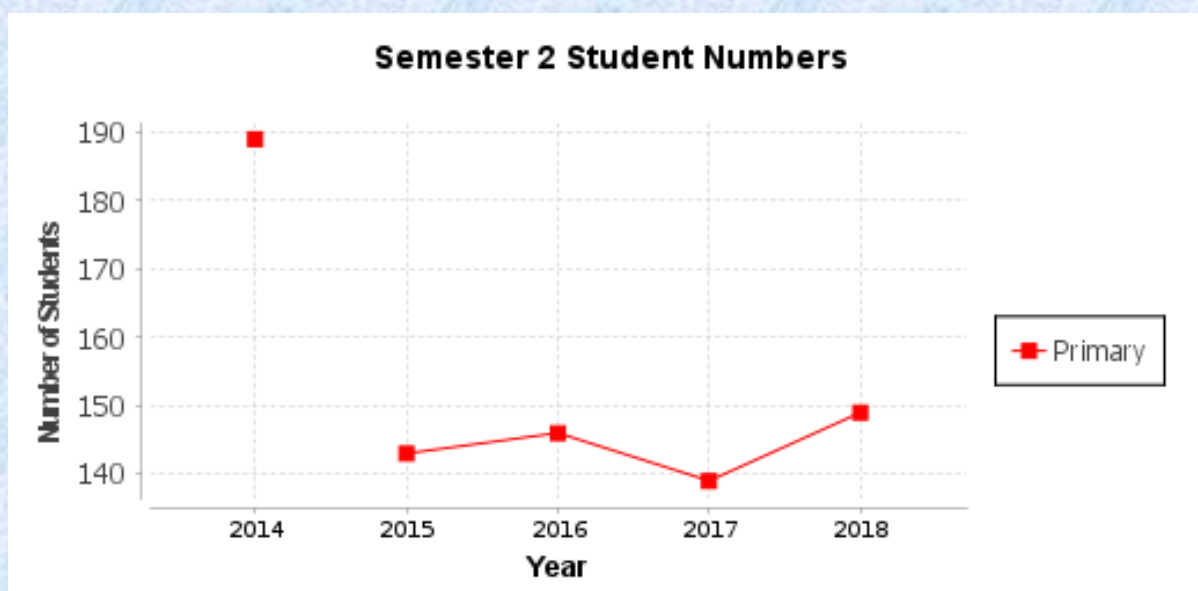
Attendance Rates

Enrolments	Available HD	Total HD Ab	Attend Rate	Auth HD Ab	Unauth HD Ab
Current	28722	3121	89.1%	2875 (92%)	246 (8%)
Former	666	162	75.7%	154 (95%)	8 (5%)
All	29388	3283	88.8%	3029 (92%)	254 (8%)

* HD = Half days



Student Enrolment Trends 2018



	2014	2015	2016	2017	2018
Primary (Excluding Kin)	189	143	146	139	149
Total	189	143	146	139	149

Destination High Schools for Rivervale Year 6 Students 2018

Destination Schools	Male	Female	Total
4005 Belmont City College	10	7	17
1100 Aranmore Catholic College		1	1
1045 Clontarf Aboriginal College		1	1
4196 John Tonkin College		1	1

NAPLAN COMPARATIVE PERFORMANCE DATA ANALYSIS

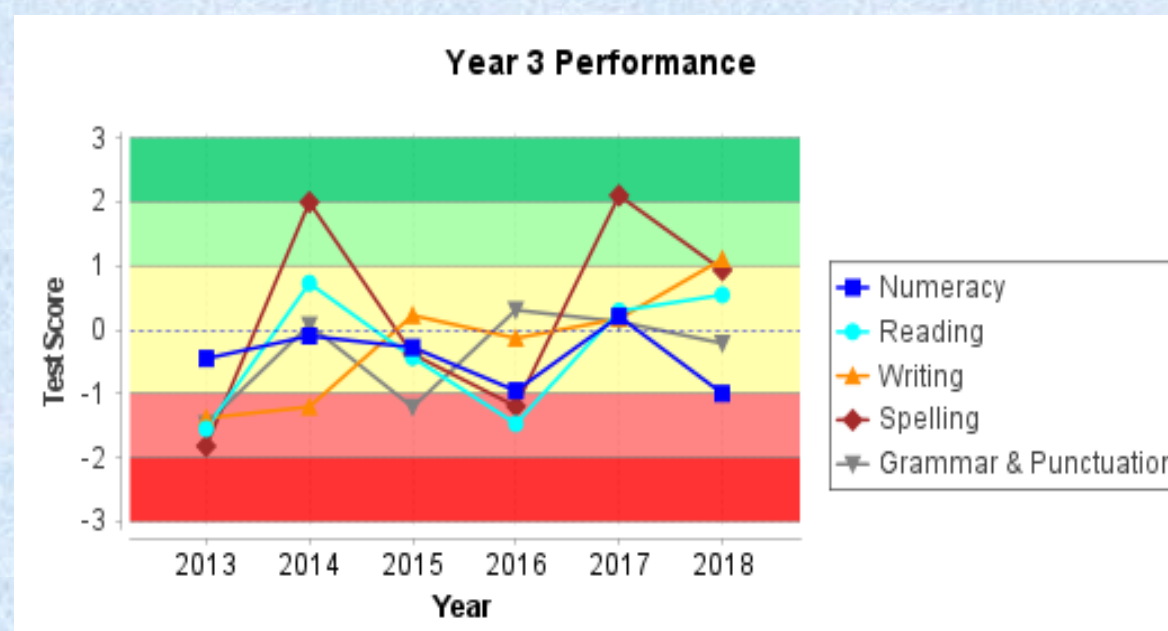
We are very happy with the improvement showing in both Writing and Spelling for our Year 3s in 2018. This would be as a direct result of our Talk For Writing and Letters and Sounds spelling program.

For our Year 5's in 2018, a great improvement was achieved in reading and spelling. Grammar and Punctuation is an area of concern for Year 5s (2018) This has become a priority area for 2019. WE have introduced standardised testing in this area and have examined our Sound Waves program to ensure that the grammar and punctuation teaching objectives are being set and met.

YEAR 3 COMPARATIVE PERFORMANCE

Year 3	Performance						Students					
	2013	2014	2015	2016	2017	2018	2013	2014	2015	2016	2017	2018
Numeracy	-0.4	-0.1	-0.3	-1.0	0.2	-1.0	13	16	26	15	19	18
Reading	-1.5	0.7	-0.4	-1.5	0.3	0.5	13	16	26	17	20	18
Writing	-1.4	-1.2	0.2	-0.1	0.2	1.1	13	18	26	15	20	18
Spelling	-1.8	2.0	-0.4	-1.2	2.1	0.9	13	18	26	15	20	18
Grammar & Punctuation	-1.5	0.1	-1.2	0.3	0.1	-0.2	13	18	26	15	20	18

1	Above Expected - more than one standard deviation above the predicted school
2	Expected - within one standard deviation of the predicted school mean
3	Below Expected - more than one standard deviation below the predicted school mean
	If blank, then no data available or number of students is less than 6



YEAR 5 COMPARATIVE PERFORMANCE

Year 5	Performance						Students					
	2013	2014	2015	2016	2017	2018	2013	2014	2015	2016	2017	2018
Numeracy	0.1	0.0	-1.6	-0.5	-0.3	-0.2	12	18	13	23	15	21
Reading	-0.2	1.0	0.1	-0.1	-0.3	1.0	13	18	13	23	15	21
Writing	-1.5	-0.4	0.1	0.5	1.7	-0.1	11	18	12	23	15	21
Spelling	1.1	1.5	1.0	-0.2	1.5	1.5	11	18	12	23	15	21
Grammar & Punctuation	-1.9	1.4	1.3	-1.8	-0.2	-1.5	11	18	12	23	15	21

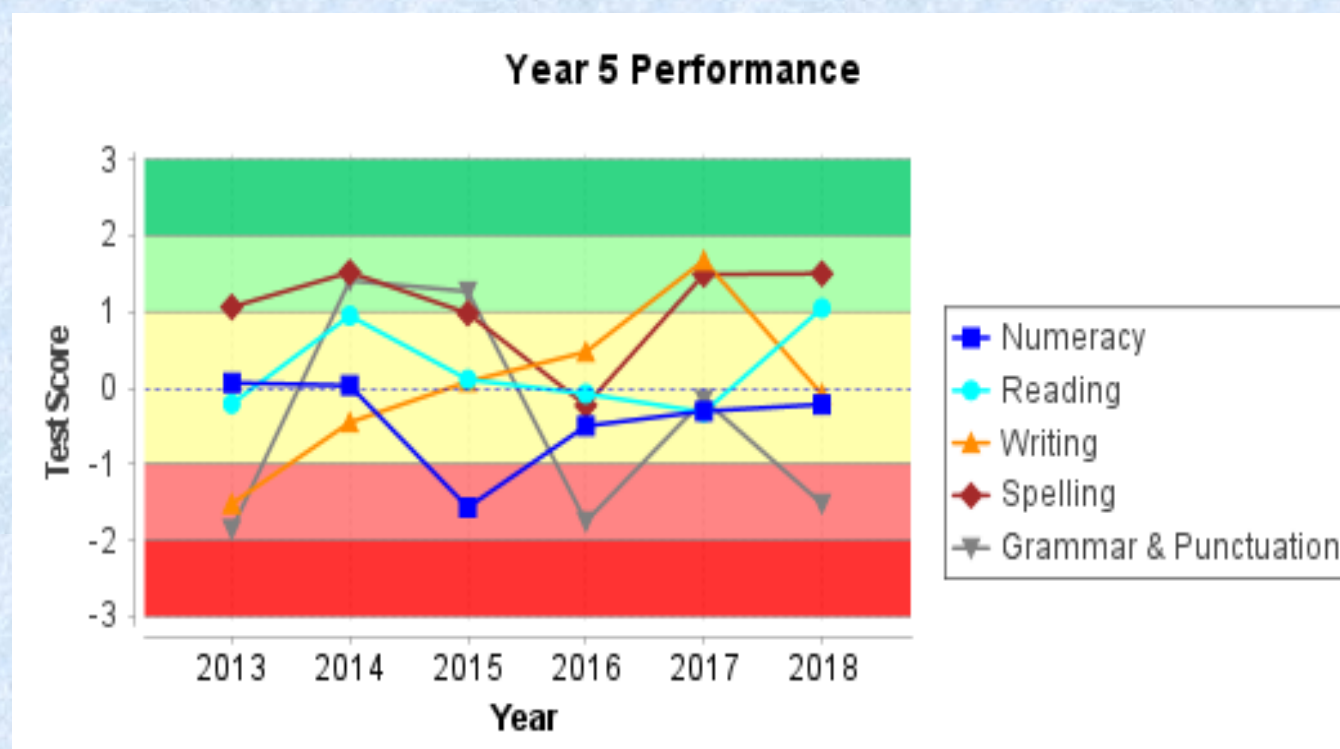
1
2
3

Above Expected -

Expected - within one standard deviation of the predicted school mean

Below Expected -

If blank, then no data available or number of students is less than 6



Highlights of 2018

All staff at Rivervale work with enthusiasm, dedication and a high level of energy to help bring about some wonderful achievements from the children.

Some highlights of the year include:

- Continuation of the School Improvement Plan and linking to the new Curriculum Support program
- Our Terrific Family Fun Day Sports Carnival.
- Year 6 End of Year Activities
- Positive behaviour rewards - Pizza lunches, bronze, silver and gold awards special recess activities, and movie sessions - Fiesta
- TOD (Treat Each Other Decently) the bear
- Year 6 Farewell and Awards Ceremony
- A "tweak" of our Values program – linking it to the ABE on reports.
- The introduction of our play Plan
- Competing the Read Our Loud Awards
- Sporting schools Rugby and Cricket Programs
- Competing in the interschool Winter Sport Carnival with a first place achieved by Soccer



SPECIAL PROGRAMS 2018

- Intentional / guided play program – Play Plan
- Local projects Local jobs project – a new playground
- Kindilink Early Intervention Kindy Program
- Rugby Program
- Cricket Program
- Playgroup and parent workshops
- Speech, Occupational therapy provided at school
- Chaplaincy Program - Drumbeat
- Dental Hygiene Program
- Aboriginal and Islander Education Officer support for staff, students and parents.
- Whole School Behaviour Program—Positive Focus: Special award events, Bronze, Silver and Gold Awards, excursions and incursions.
- Attendance and Uniform Reward Program
- ICT, IPADS and laptops
- Social and Emotional Wellbeing—PATHS, TOD the BEAR, Rainbows, Orientation Enrolment System
- Science Program
- Art Program
- Technology Program
- Rivervale Community Jupp Lane Festival
- Choir



Rivervale Finances

Student-Centred Funding - 2018

Per Student Funding:	\$1,281,916.00
Student and School Characteristics:	\$883,717.15
Disability Adjustments:	\$25,896.92
Targeted Initiatives:	\$122,817.94
Operational Response Allocation:	\$9,505.15
Regional Allocation:	\$0.00
Total Dec 2018:	\$2,323,853.16
Transition Adjustment:	\$0.00
Total After Transition Adjustment:	\$2,323,853.16

Per Student Funding - At Census

Kindergarten	33	\$156,585.00
Pre-Primary	26	\$211,510.00
Year 1	23	\$187,105.00
Year 2	15	\$122,025.00
Year 3	21	\$170,835.00
Year 4	24	\$162,696.00
Year 5	23	\$155,917.00
Year 6	17	\$115,243.00
Total	182	\$1,281,916.00
Funded Student FTE		

Student Characteristics

Aboriginality	45.00	\$90,872.95
Disability	57.72	\$225,556.35
English as an Additional Language	17.00	\$49,466.65
Social Disadvantage	92.03	\$93,555.20
Sub Total		\$459,451.15

School Characteristics

Enrolment-Linked Base		\$424,266.00
Locality		\$0.00
Sub Total		\$424,266.00

Total \$883,717.15

Targeted Initiatives (Detail)

Graduate Teacher Induction Program		\$9,137.92
and Graduate Curriculum Materials		
In School State Funded Chaplaincy Program		-\$20,000.00
KindiLink Pilot		\$49,353.40
National Quality Standard Implementation		\$1,109.62
National School Chaplaincy Programme		\$20,000.00
Science programs: Grants for science resources		
to support the Western Australian Curriculum: Science		\$25,000.00
Sporting Schools Programme		\$6,900.00
Total		\$91,500.94

National Partnership on Universal Access to		
Early Childhood Education	33.00	\$31,317.00
Total		\$31,317.00

Operational Response Allocation (Detail)

2018 School Device Program		\$8,672.93
Keeping Our Workplace Safe professional learning		\$277.41
Teacher Relief - Examinations, Certification and Testing		\$554.81
Total		\$9,505.15

CASH BALANCES INCOME

School Transfers - Cash	\$271,012.50
Department Adjustments	\$.00
Locally Raised Funds (Revenue)	\$138,403.31
Voluntary Contributions	\$4,625.00
Charges and Fees	\$25,728.00
Fees from Facilities Hire	\$2,546.00
Fundraising/Donations/Sponsorships	\$3,087.00
Commonwealth Govt Revenues	\$979.00
Other State Govt/Local Govt Revenues	\$6,180.00
Revenue from CO, Regional Office and Other schools	\$.00
Other Revenues	\$31,023.31
Transfer from Reserve or DGR	\$64,235.00
Residential Accommodation	\$.00
Farm Revenue (Ag and Farm Schools only)	\$.00
Camp School Fees (Camp Schools only)	\$.00

Total \$2,604,172.73

Expenditure

Salaries	\$1,980,540.31
Appointed Staff	\$1,980,540.31
New Appointments	\$.00
Casual Payments	\$.00
Other Salary Expenditure	\$.00
Goods and Services (Cash Expenditure)	\$537,436.50
Administration	\$22,057.00
Lease Payments	\$.00
Utilities, Facilities and Maintenance	\$114,180.00
Buildings, Property and Equipment	\$190,810.00
Curriculum and Student Services	\$130,460.50
Professional Development	\$5,000.00
Transfer to Reserve	\$61,000.00
Other Expenditure	\$13,929.00
Payment to CO, Regional Office and Other schools	\$.00
Residential Operations	\$.00
Residential Boarding Fees to CO (Ag Colleges only)	\$.00
Farm Operations (Ag and Farm Schools only)	\$.00
Farm Revenue to CO (Ag and Farm Schools only)	\$.00
Camp School Fees to CO (Camp Schools only)	\$.00

Total \$2,517,976.81

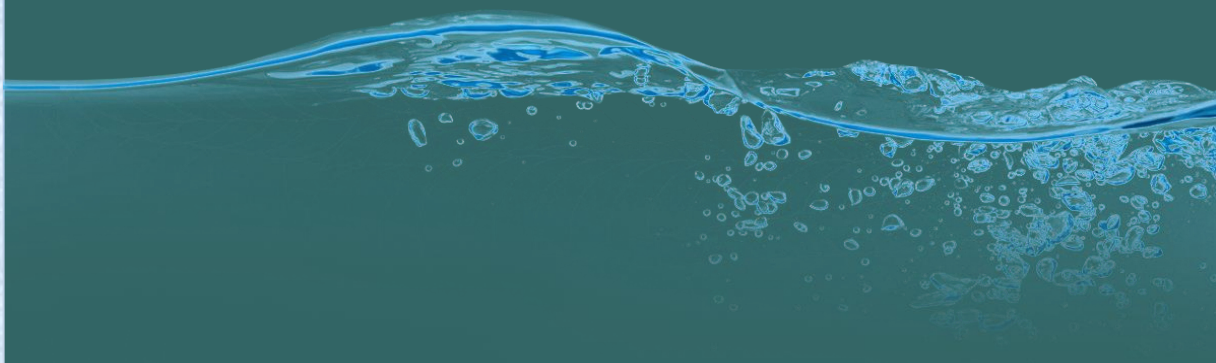


At Rivervale Primary
we aim to

E D U C A T E

N U R T U R E

I N S P I R E



Mentally Healthy Schools