

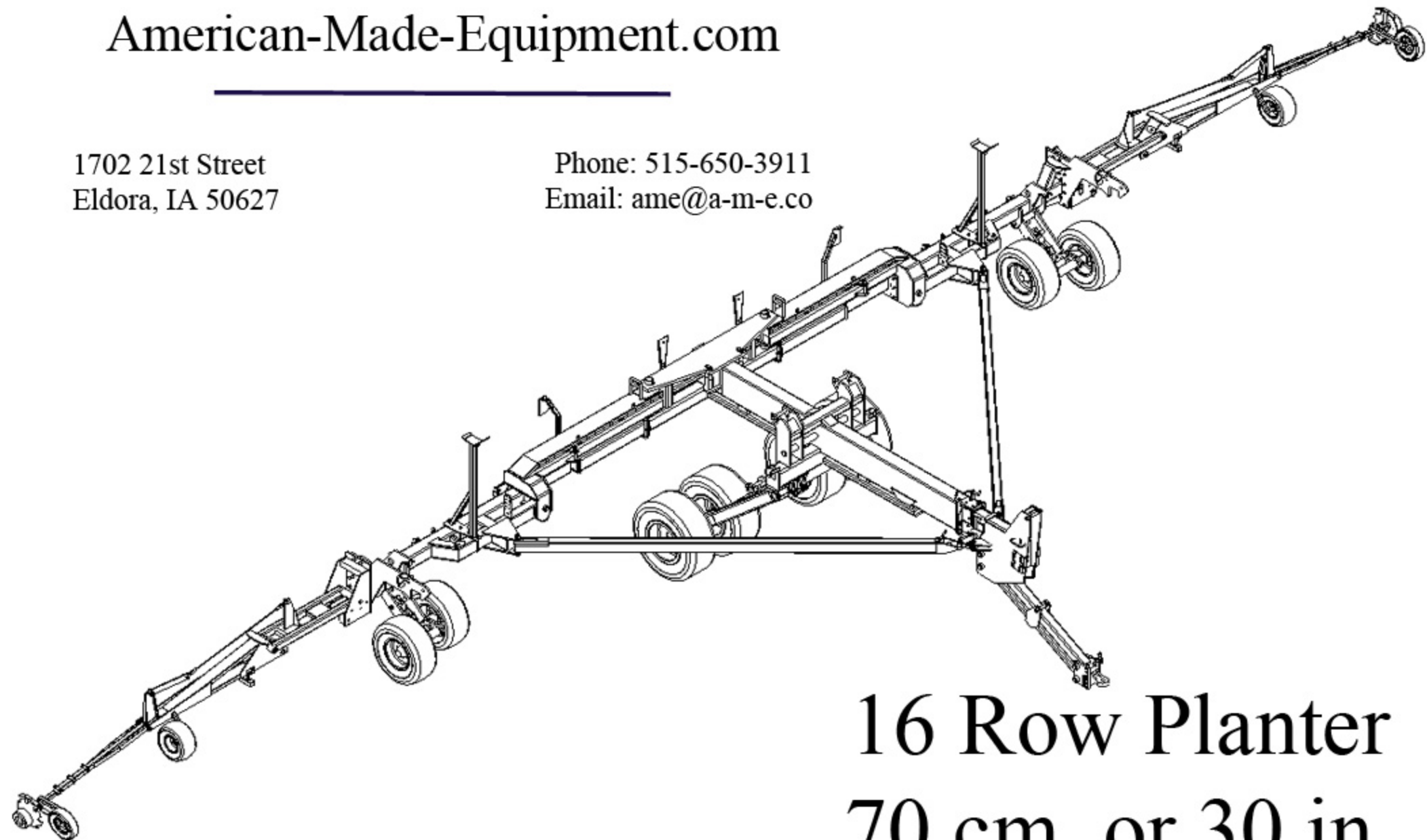
# A-M-E.co

American-Made-Equipment.com

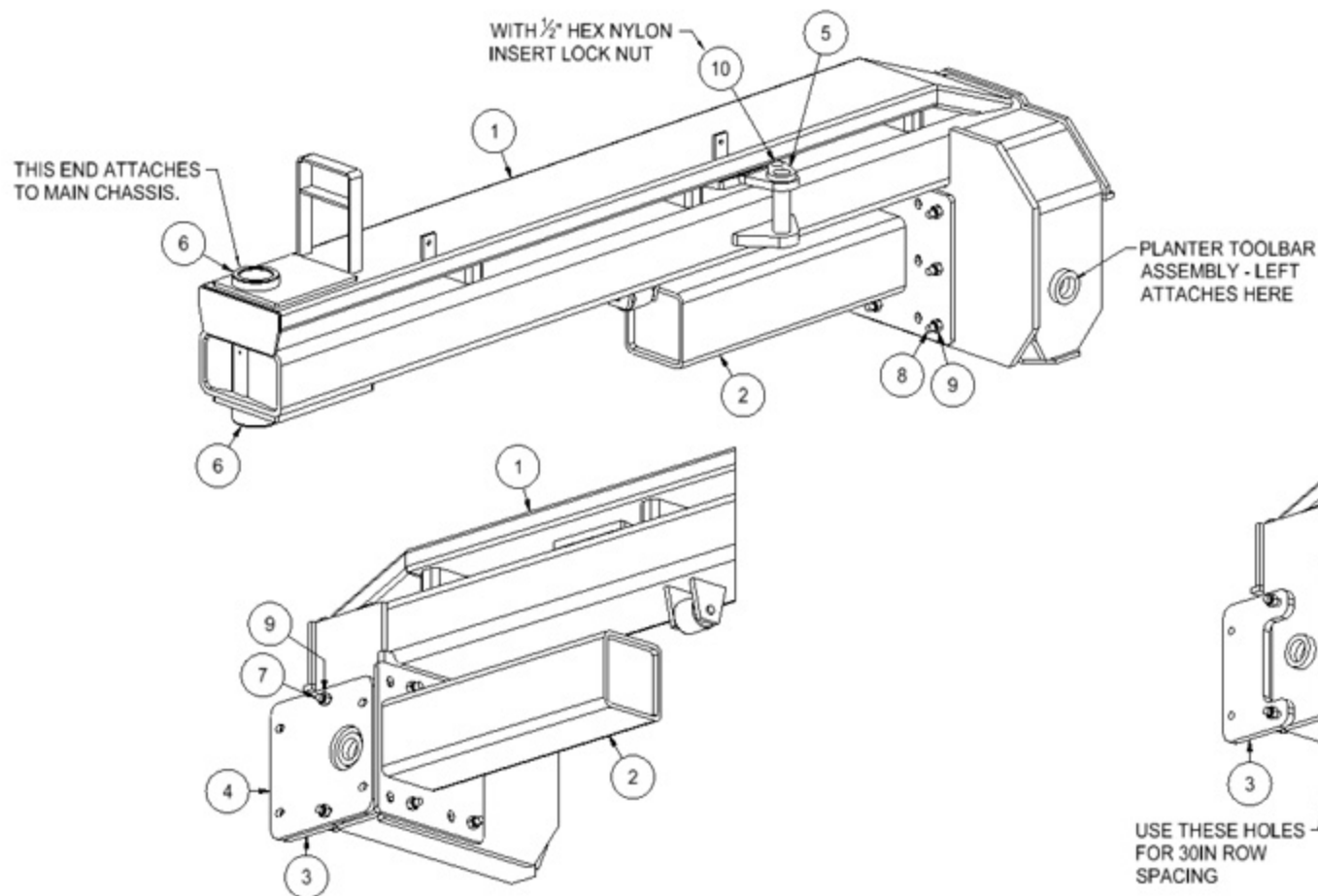
---

1702 21st Street  
Eldora, IA 50627

Phone: 515-650-3911  
Email: [ame@a-m-e.co](mailto:ame@a-m-e.co)



16 Row Planter  
70 cm. or 30 in.



P1-0160 AND P1-0205 ARE  
REQUIRED ONLY WHEN  
PLANTER IS BEING SET UP  
FOR 70CM ROWS.

# A-M-E.co

American-Made-Equipment.com

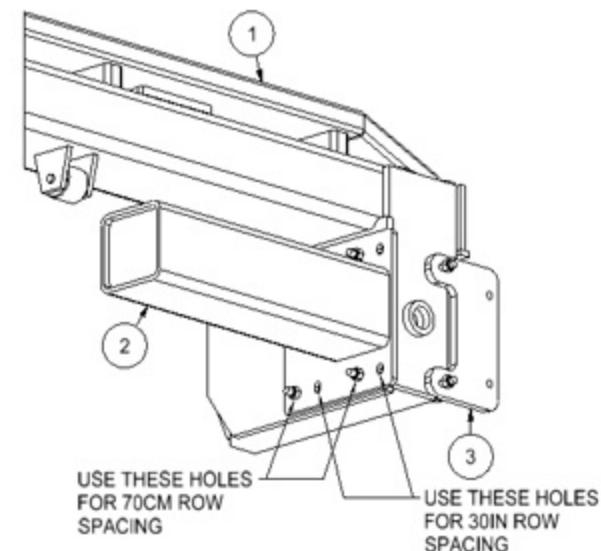
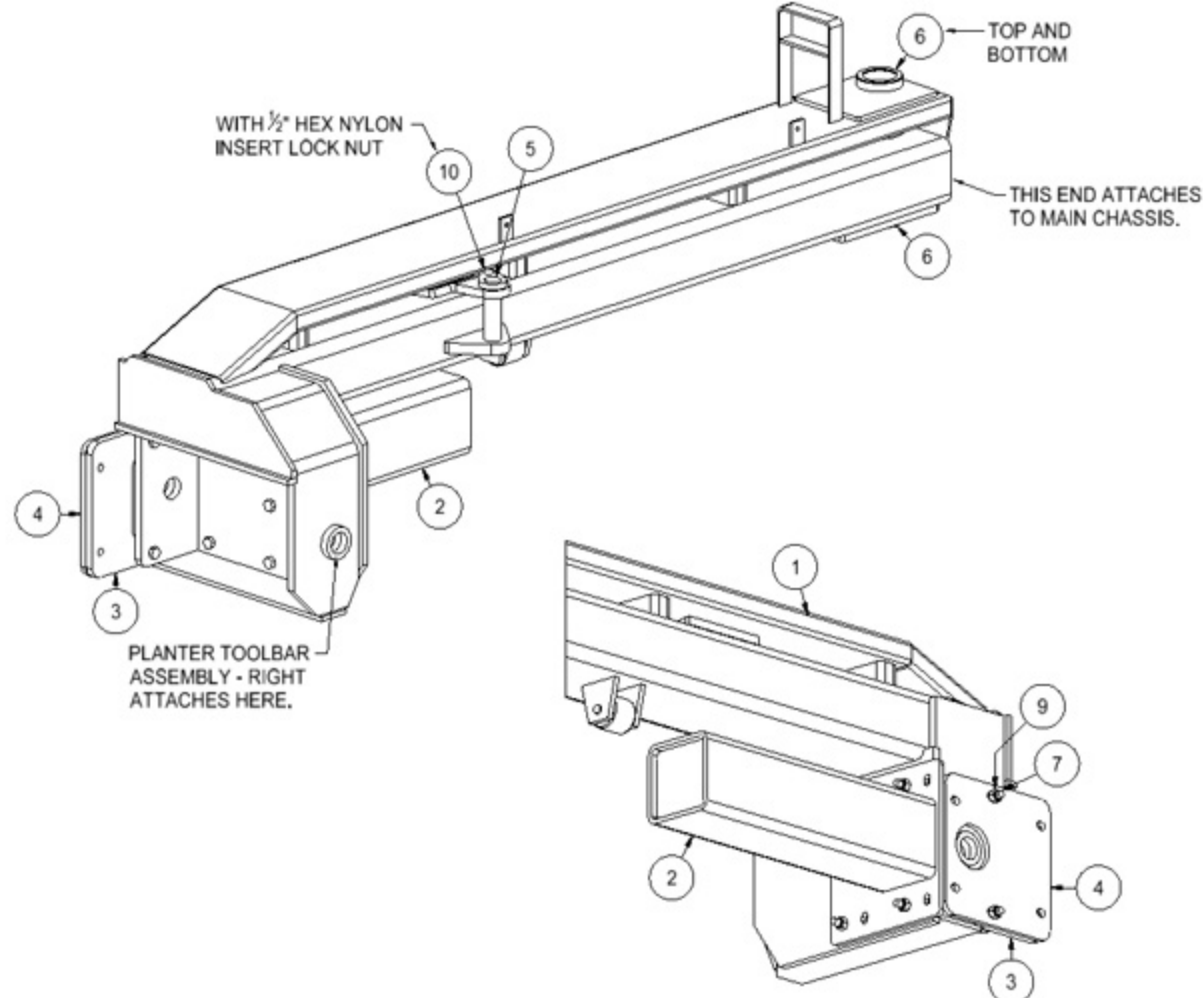
1702 21st Street  
Eldora, IA 50627

Phone: 515-650-3911  
Email: ame@a-m-e.co

USE THESE HOLES  
FOR 30IN ROW  
SPACING

USE THESE HOLES  
FOR 70CM ROW  
SPACING

Item #	PART #	DESCRIPTION	QTY	LBS/ EA
1	PA-0021-L	7'-8" LEFT UPPER ARM ASSY	1	768.88
2	PM-0021	UPPER ARM TOOL BAR EXTENSION	1	102.06
3	P1-0160	3/4" X 8" X 12 9/16" PLATE	1	16.03
4	P1-0205	1/2" X 12 1/2" X 1'-0 1/2" PLATE - SLOTS	1	19.73
5	PM-0016	1 1/2" DIA. X 0'-6 3/8" PIN W/TAB	1	3.95
6	P9-0055	3" ID X 4" OD X 1/8" THK SHIM	2	.17
7	990959	5/8" X 3" HEX BOLT - GRADE 8	2	.90
8	990953	5/8" X 2 1/2" HEX BOLT - GRADE 8	5	.90
9	990956	5/8" HEX NYLON INSERT LOCK NUT - GRADE A	7	.08
10	990918	1/2" X 2 1/4" CARRIAGE BOLT - GRADE 5	1	.90
11	990916	1/2" HEX NYLON INSERT LOCK NUT - GRADE A	1	.04



P1-0160 AND P1-0205 ARE  
REQUIRED ONLY WHEN  
PLANTER IS BEING SET UP FOR  
70CM ROWS.

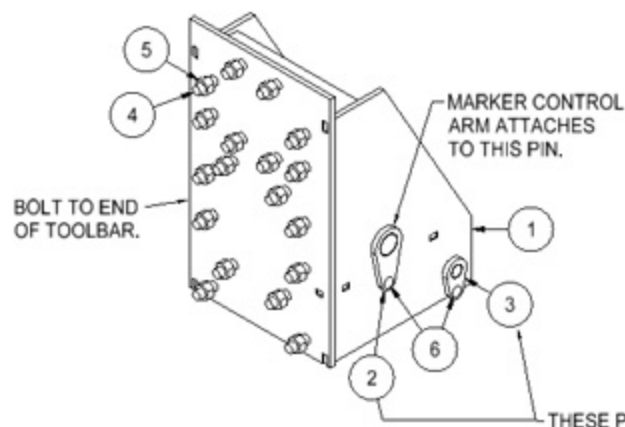
# A-M-E.co

American-Made-Equipment.com

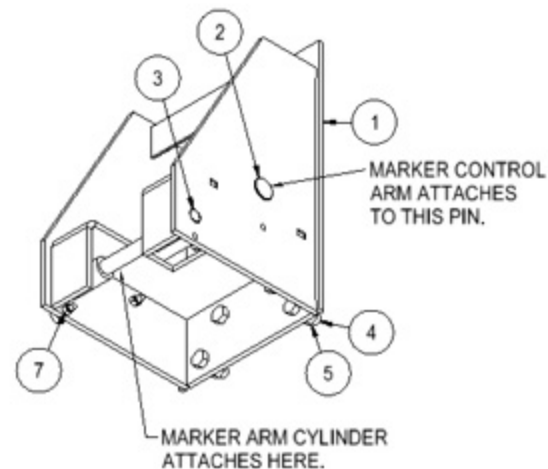
1702 21st Street  
Eldora, IA 50627

Phone: 515-650-3911  
Email: ame@a-m-e.co

Item #	PART #	DESCRIPTION	QTY	LBS/ EA
1	PA-0021-R	7'-8" RIGHT UPPER ARM ASSY	1	768.20
2	PM-0021	UPPER ARM TOOL BAR EXTENSION	1	102.06
3	P1-0160	3/4" X 8" X 12 9/16" PLATE	1	16.03
4	P1-0205	1/2" X 12 1/2" X 1'-0 1/2" PLATE - SLOTS	1	19.73
5	PM-0016	1 1/2" DIA. X 0'-6 3/8" PIN W/TAB	1	3.95
6	P9-0055	3" ID X 4" OD X 1/8" THK SHIM	2	.17
7	990959	5/8" X 3" HEX BOLT - GRADE 8	2	.90
8	990953	5/8" X 2 1/2" HEX BOLT - GRADE 8	5	.90
9	990956	5/8" HEX NYLON INSERT LOCK NUT - GRADE A	7	.08
10	990918	1/2" X 2 1/4" CARRIAGE BOLT - GRADE 5	1	.90
11	990916	1/2" HEX NYLON INSERT LOCK NUT - GRADE A	1	.04



THESE PINS INSTALLED FROM THE BACK SIDE OF THE PLANTER. THIS DETAIL SHOWS THE ASSEMBLY FOR THE RIGHT HAND SIDE WHEN STANDING BEHIND THE PLANTER.



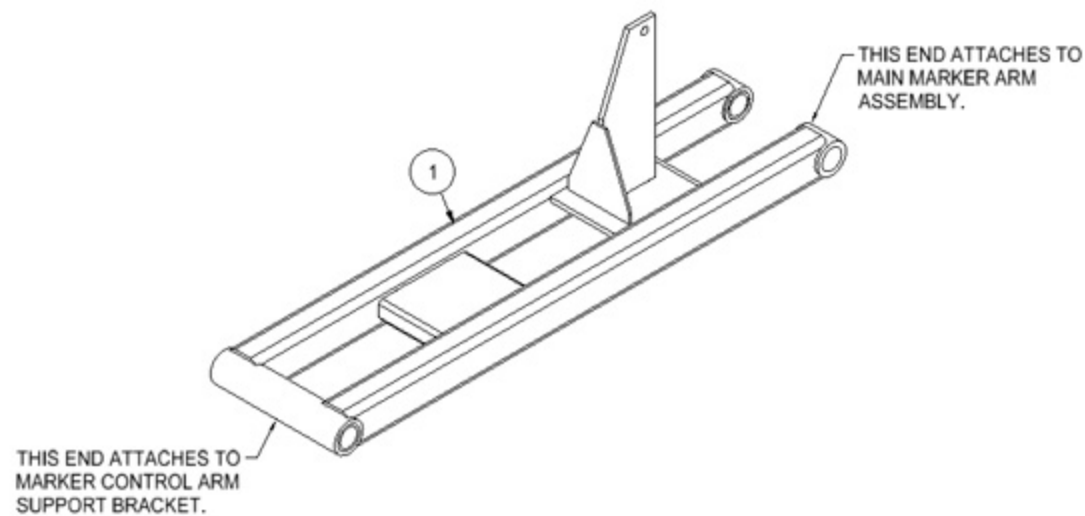
# A-M-E.co

American-Made-Equipment.com

1702 21st Street  
Eldora, IA 50627

Phone: 515-650-3911  
Email: ame@a-m-e.co

Item #	PART #	DESCRIPTION	QTY	LBS/ EA
1	PA-0006	MARKER ARM ATTACHMENT BRACKET	1	185.10
2	PA-0025	2" DIA. X 1'-3 7/8" PIN W/TAB	1	15.50
3	PA-0026	1 1/4 DIA. X 1'-3 3/4" PIN W/TAB	1	6.21
4	990952	7/8" X 2 1/2" HEX BOLT - GRADE 8	18	.90
5	990915	7/8" HEX NUT - GRADE 8	18	.19
6	990917	1/2" X 2" CARRIAGE BOLT - GRADE 5	2	.90
7	990916	1/2" HEX NYLON INSERT LOCK NUT - GRADE A	2	.04



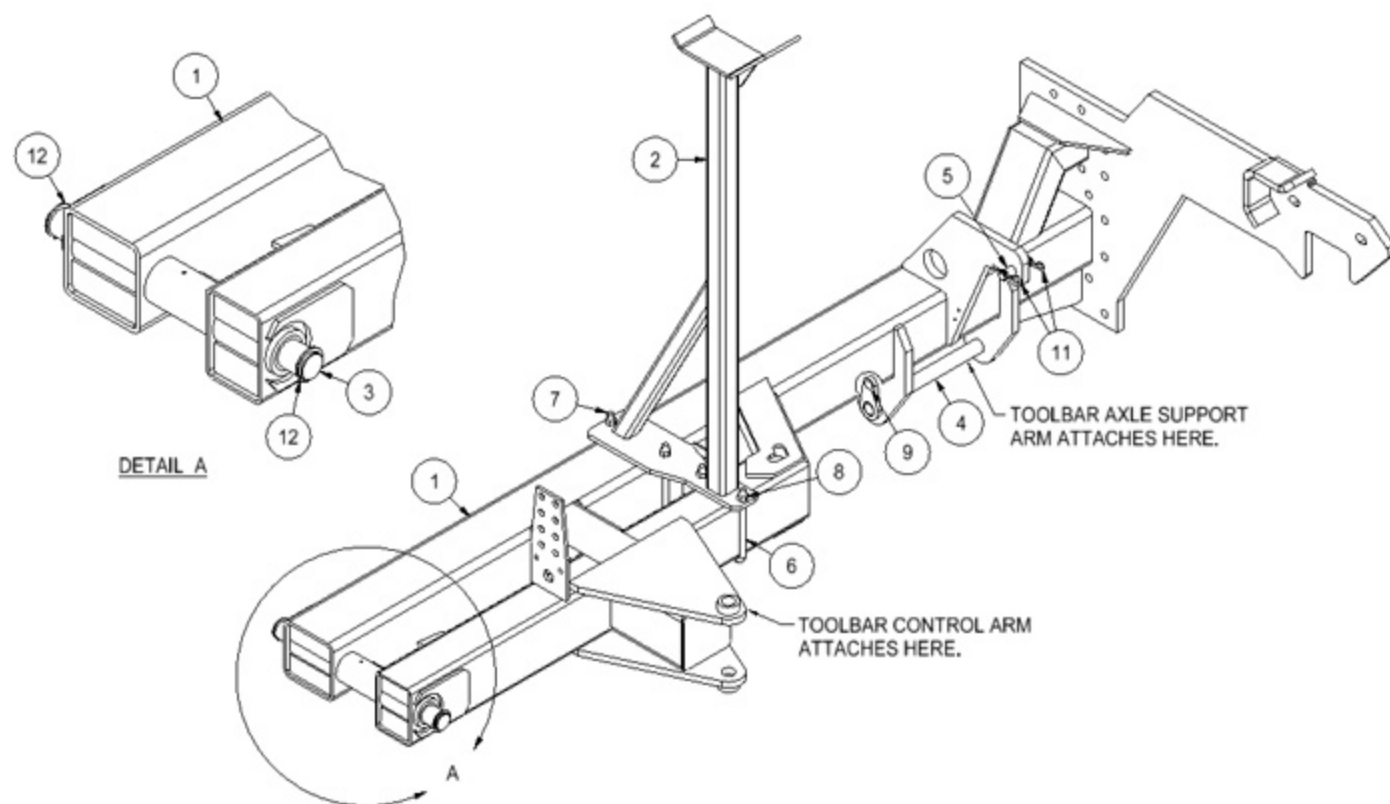
# A-M-E.co

American-Made-Equipment.com

1702 21st Street  
Eldora, IA 50627

Phone: 515-650-3911  
Email: ame@a-m-e.co

Assembly Drawing			Galvanized add 6% to weight	
Item #	Part #	Description	Qty	Lbs/Unit
1	PA-0007	MARKER CONTROL ARM	1	177.5



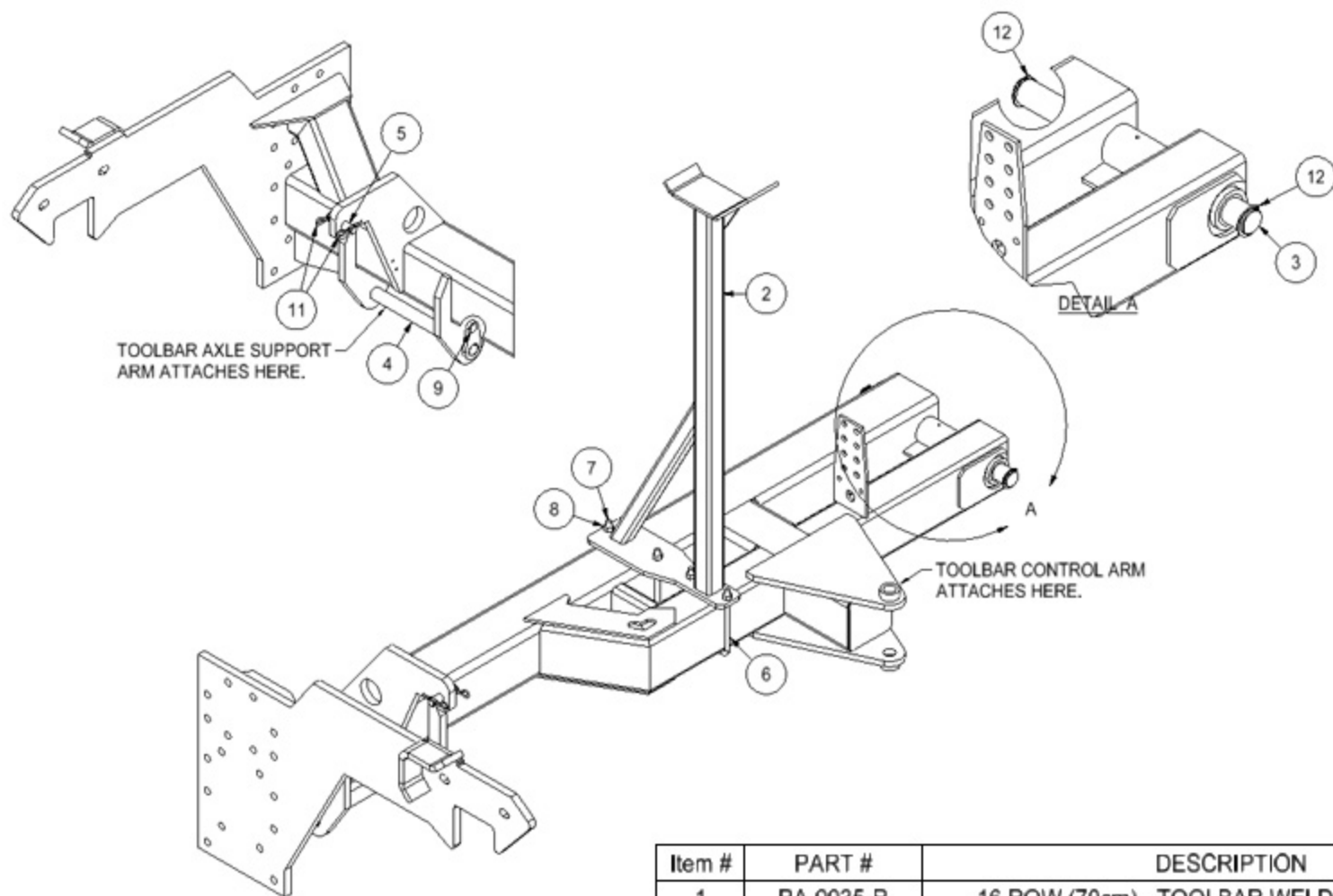
# A-M-E.co

American-Made-Equipment.com

1702 21st Street  
Eldora, IA 50627

Phone: 515-650-3911  
Email: ame@a-m-e.co

Item #	PART #	DESCRIPTION	QTY	LBS/ EA
1	PA-0035-L	16 ROW (70cm) - TOOLBAR WELDMENT - LEFT	1	871.09
2	PA-0039	MARKER ARM SUPPORT STAND	1	57.87
3	P9-0050	2" OD (+0.0 -0.03) X 23 3/8" PIN	1	20.81
4	PA-0024	1 1/2" DIA. X 1'-4 5/8" PIN W/TAB	1	9.37
5	P9-0060	1" OD (+0.0 -0.03) X 4" PIN	1	.85
6	990180	5/8" x 5 1/8" x 8 11/16" U-Bolt (Plated)	1	2.20
7	990183	5/8" x 7 1/8" x 8 11/16" U-Bolt (Plated)	1	2.20
8	990951	5/8" HEX NUT - GRADE 8	4	.08
9	990919	1/2" X 2 1/2" CARRIAGE BOLT - GRADE 5	1	.90
10	990916	1/2" HEX NYLON INSERT LOCK NUT - GRADE A	1	.04
11	P9-0064	.177 X 3 1/2" HAIRPIN COTTER PIN	2	.07
12	P9-0005	1/8" X 2" DIA SNAP RING	2	.06



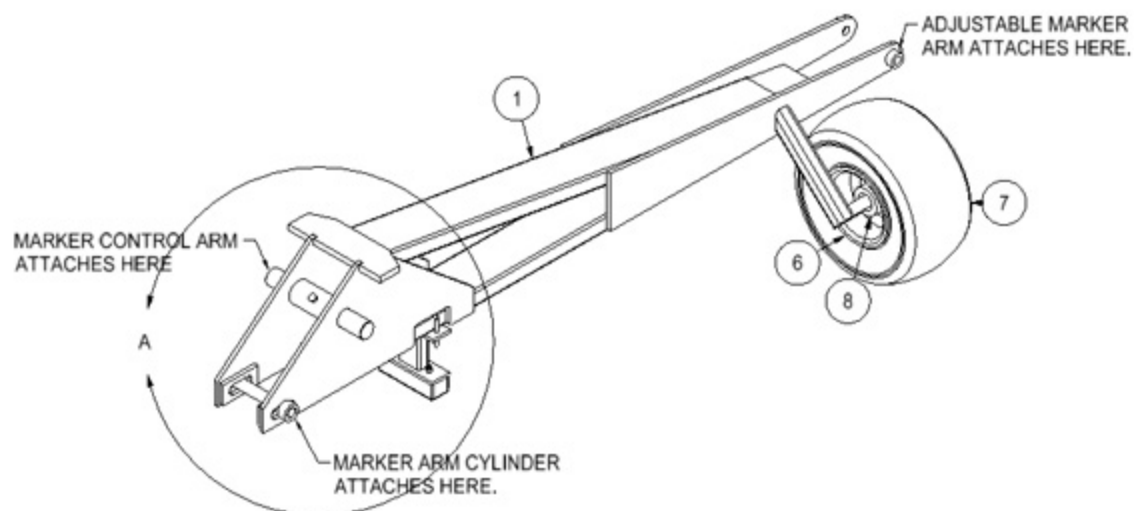
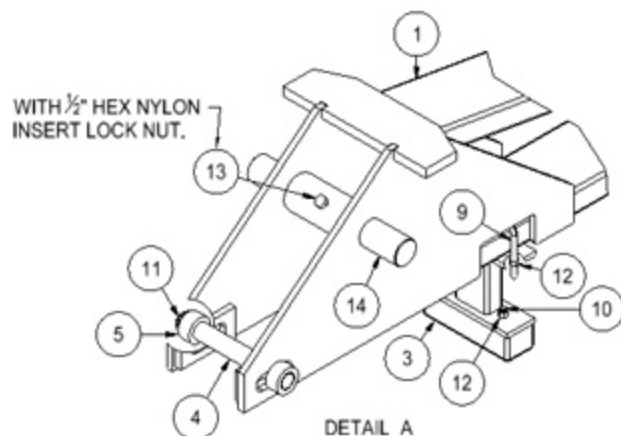
# A-M-E.co

American-Made-Equipment.com

1702 21st Street  
Eldora, IA 50627

Phone: 515-650-3911  
Email: ame@a-m-e.co

Item #	PART #	DESCRIPTION	QTY	LBS/ EA
1	PA-0035-R	16 ROW (70cm) - TOOLBAR WELDMENT - RIGHT	1	861.98
2	PA-0039	MARKER ARM SUPPORT STAND	1	57.87
3	P9-0050	2" OD (+0.0 -0.03) X 23 3/8" PIN	1	20.81
4	PA-0024	1 1/2" DIA. X 1'-4 5/8" PIN W/TAB	1	9.37
5	P9-0060	1" OD (+0.0 -0.03) X 4" PIN	1	.85
6	990180	5/8" x 5 1/8" x 8 11/16" U-Bolt (Plated)	1	2.20
7	990183	5/8" x 7 1/8" x 8 11/16" U-Bolt (Plated)	1	2.20
8	990951	5/8" HEX NUT - GRADE 8	4	.08
9	990919	1/2" X 2 1/2" CARRIAGE BOLT - GRADE 5	1	.90
10	990916	1/2" HEX NYLON INSERT LOCK NUT - GRADE A	1	.04
11	P9-0064	.177 X 3 1/2" HAIRPIN COTTER PIN	2	.07
12	P9-0005	1/8" X 2" DIA SNAP RING	2	.06



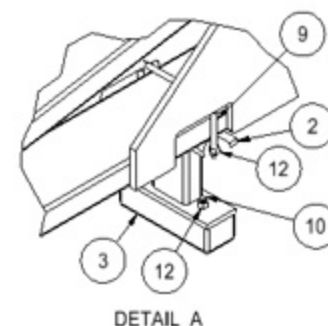
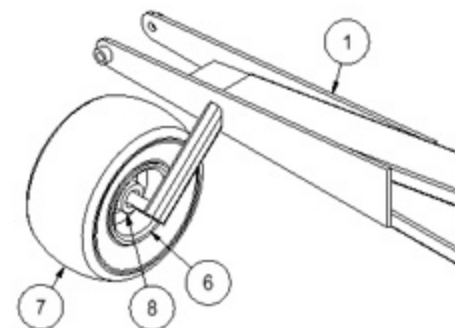
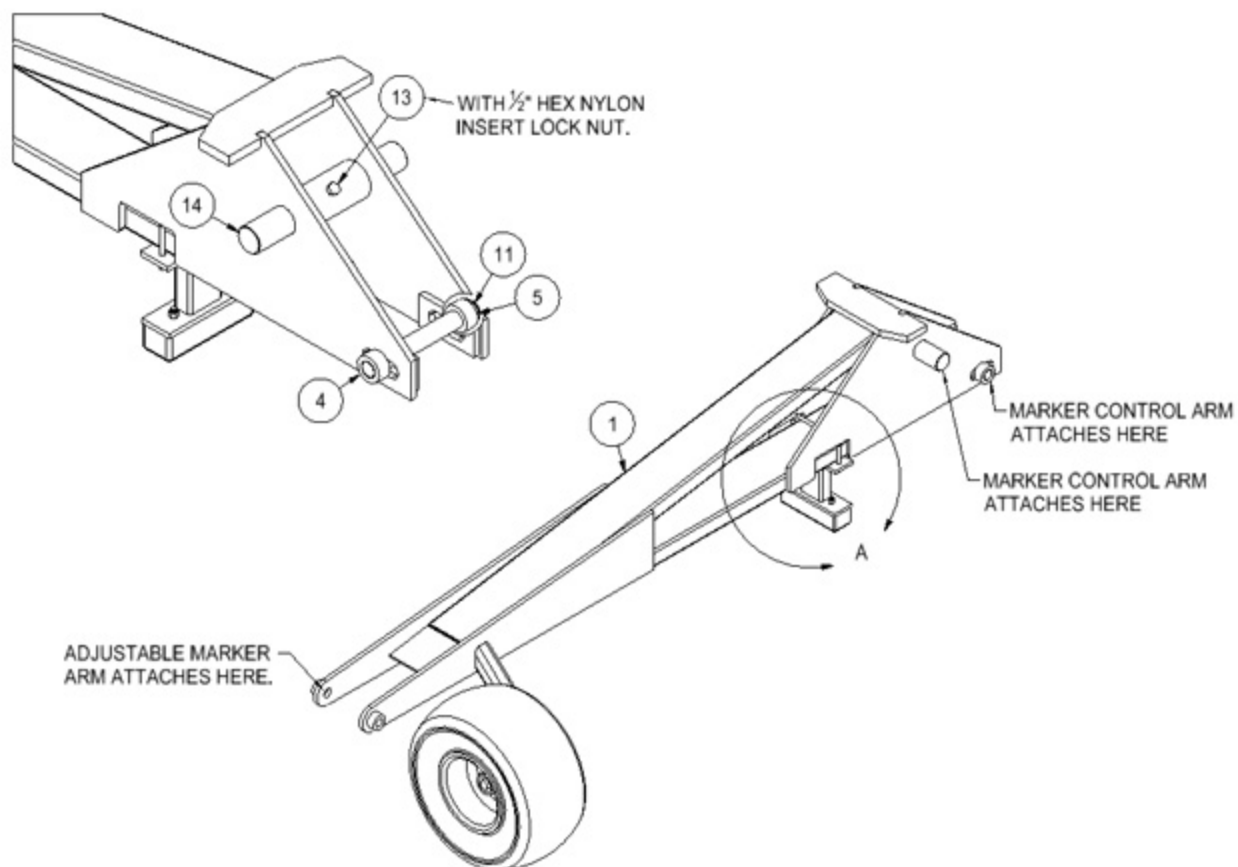
# A-M-E.co

American-Made-Equipment.com

1702 21st Street  
Eldora, IA 50627

Phone: 515-650-3911  
Email: ame@a-m-e.co

Item #	PART #	DESCRIPTION	QTY	LBS/ EA
1	PA-0036-L	16 ROW (70cm) - MARKER ARM - LEFT	1	222.71
2	PA-0014	ADJUSTABLE MARKER ARM SUPPORT STAND	1	5.58
3	P9-0061	2" X 7 3/4" X 2" H - DOCK BUMPER	1	1.18
4	PA-0027	1 1/4" DIA. X 9 5/8" PIN W/BUSHING	1	3.88
5	P5-0034	2" OD X .375" WT X 0'-1" BUSHING	1	.54
6	P9-0021	8" Rim	1	11.78
7	P9-0022	18x8.5-8 DELI TIRE	1	20.75
8	P9-0046	5 1/4" X 7 1/4" DIA HUB	1	6.62
9	990181	3/8" x 6 1/8" x 3 13/16" U-Bolt (Plated)	1	2.20
10	990146	3/8" X 1 1/2" GRADE 5 BOLT W-NUT (PLATED)	2	.07
11	P9-0037	1/16" X 1 1/4" DIA SNAP RING	1	.02
12	990937	3/8" HEX NYLON INSERT LOCK NUT - GRADE A	4	.02
13	990930	1/2" X 3 1/2" HEX BOLT - GRADE 8	1	.00
14	P9-0053	2" OD (+0.0 -0.03) X 13 1/2" PIN	1	11.90
15	990916	1/2" HEX NYLON INSERT LOCK NUT - GRADE A	1	.04



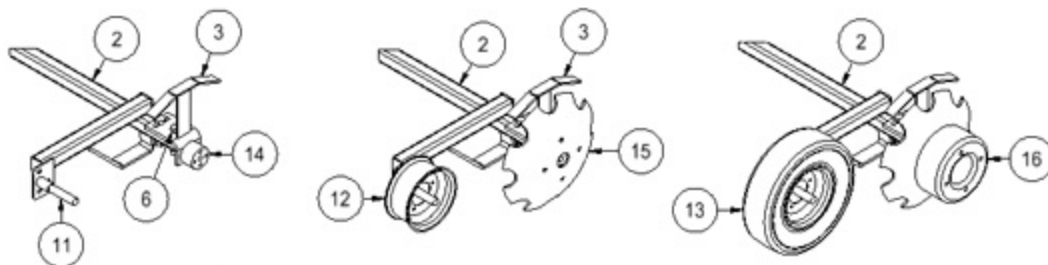
# A-M-E.co

American-Made-Equipment.com

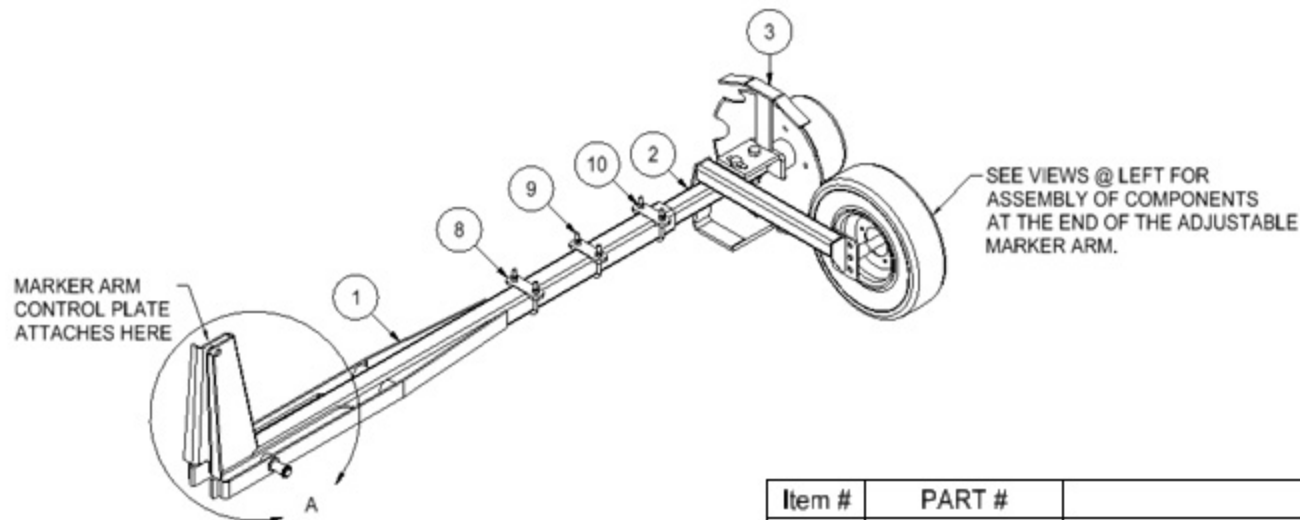
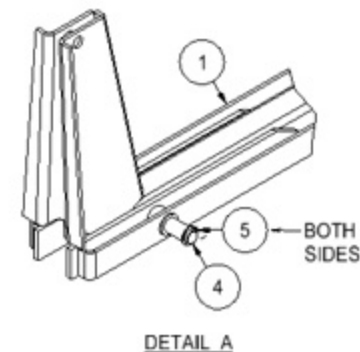
1702 21st Street  
Eldora, IA 50627

Phone: 515-650-3911  
Email: ame@a-m-e.co

Item #	PART #	DESCRIPTION	QTY	LBS/ EA
1	PA-0036-R	16 ROW (70cm) - MARKER ARM - RIGHT	1	222.71
2	PA-0014	ADJUSTABLE MARKER ARM SUPPORT STAND	1	5.58
3	P9-0061	2" X 7 3/4" X 2" H - DOCK BUMPER	1	1.18
4	PA-0027	1 1/4" DIA. X 9 5/8" PIN W/BUSHING	1	3.88
5	P5-0034	2" OD X .375" WT X 0'-1" BUSHING	1	.54
6	P9-0021	8" Rim	1	11.78
7	P9-0022	18x8.5-8 DELI TIRE	1	20.75
8	P9-0046	5 1/4" X 7 1/4" DIA HUB	1	6.62
9	990181	3/8" x 6 1/8" x 3 13/16" U-Bolt (Plated)	1	2.20
10	990146	3/8" X 1 1/2" GRADE 5 BOLT W-NUT (PLATED)	2	.07
11	P9-0037	1/16" X 1 1/4" DIA SNAP RING	1	.02
12	990937	3/8" HEX NYLON INSERT LOCK NUT - GRADE A	4	.02
13	990930	1/2" X 3 1/2" HEX BOLT - GRADE 8	1	.00
14	P9-0053	2" OD (+0.0 -0.03) X 13 1/2" PIN	1	11.90
15	990916	1/2" HEX NYLON INSERT LOCK NUT - GRADE A	1	.04



NOTE:  
AT THIS TIME, THERE ARE NO BOLTS AND OTHER  
HARDWARE TO ASSEMBLE THE MARKER SUPPORT  
WHEEL AND THE MARKER DISK ASSEMBLY. EXACT  
PARTS BEING USED ARE NOT KNOWN AT THIS TIME.



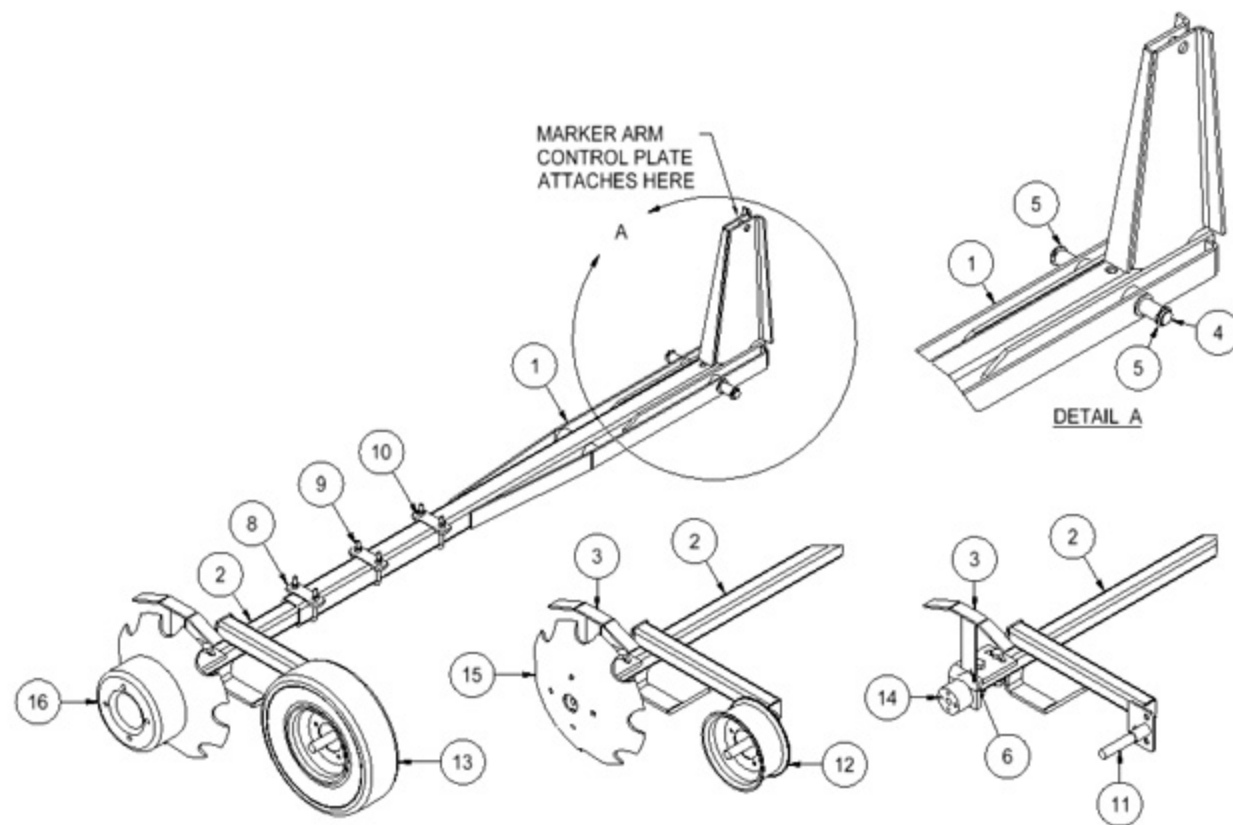
# A-M-E.co

American-Made-Equipment.com

1702 21st Street  
Eldora, IA 50627

Phone: 515-650-3911  
Email: ame@a-m-e.co

Item #	PART #	DESCRIPTION	QTY	LBS/ EA
1	PA-0037	16 ROW - ADJUSTABLE MARKER ARM	1	65.62
2	PA-0038-L	16 ROW - MARKER ARM EXTENSION - LEFT	1	37.36
3	PA-0013	MARKER WHEEL ATTACHMENT BRACKET	1	6.56
4	P9-0054	1" OD (+0.0 -0.03) X 9 3/4" PIN	1	2.15
5	P9-0062	1/16" X 1" DIA SNAP RING	2	.01
6	990075	5/8" X 3 1/2" GRADE 5 BOLT W-NUT (PLATED)	2	.31
7	990008	5/8" GALV HEAVY WASHER	2	.04
8	P1-0114	3/8" X 1 1/2" X 4 1/2" PLATE - 1/2H	3	.65
9	990182	3/8" x 2 5/8" x 3 13/16" U-Bolt (Plated)	3	2.20
10	990937	3/8" HEX NYLON INSERT LOCK NUT - GRADE A	6	.02
11	P6-0018	1 1/4" X 61/4" Spindle	1	1.55
12	P9-0024	8" Rim	1	6.97
13	P9-0025	4.8x4.00-8 LOAD STAR TIRE	1	5.09
14	P9-0065	Marker Disk Bearing	1	3.42
15	P9-0028	16" Dia. Marker Blade	1	13.04
16	P9-0029	Marker Weight 10 lbs	1	57.05



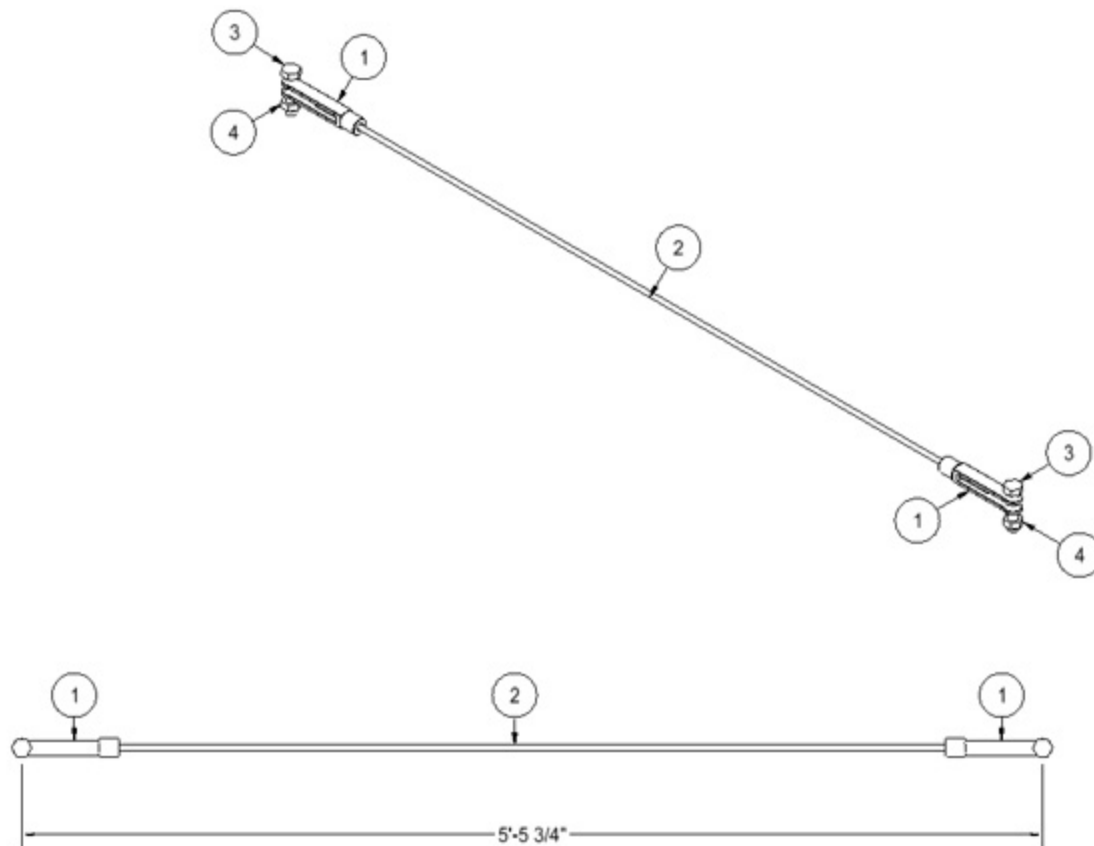
# A-M-E.co

American-Made-Equipment.com

1702 21st Street  
Eldora, IA 50627

Phone: 515-650-3911  
Email: ame@a-m-e.co

Item #	PART #	DESCRIPTION	QTY	LBS/ EA
1	PA-0037	16 ROW - ADJUSTABLE MARKER ARM	1	65.62
2	PA-0038-R	16 ROW - MARKER ARM EXTENSION - RIGHT	1	37.36
3	PA-0013	MARKER WHEEL ATTACHMENT BRACKET	1	6.56
4	P9-0054	1" OD (+0.0 -0.03) X 9 3/4" PIN	1	2.15
5	P9-0062	1/16" X 1" DIA SNAP RING	2	.01
6	990075	5/8" X 3 1/2" GRADE 5 BOLT W-NUT (PLATED)	2	.31
7	990008	5/8" GALV HEAVY WASHER	2	.04
8	P1-0114	3/8" X 1 1/2" X 4 1/2" PLATE - 1/2H	3	.65
9	990182	3/8" x 2 5/8" x 3 13/16" U-Bolt (Plated)	3	2.20
10	990937	3/8" HEX NYLON INSERT LOCK NUT - GRADE A	6	.02
11	P6-0018	1 1/4" X 61/4" Spindle	1	1.55
12	P9-0024	8" Rim	1	6.97
13	P9-0025	4.8x4.00-8 LOAD STAR TIRE	1	5.09
14	P9-0065	Marker Disk Bearing	1	3.42
15	P9-0028	16" Dia. Marker Blade	1	13.04
16	P9-0029	Marker Weight 10 lbs	1	57.05



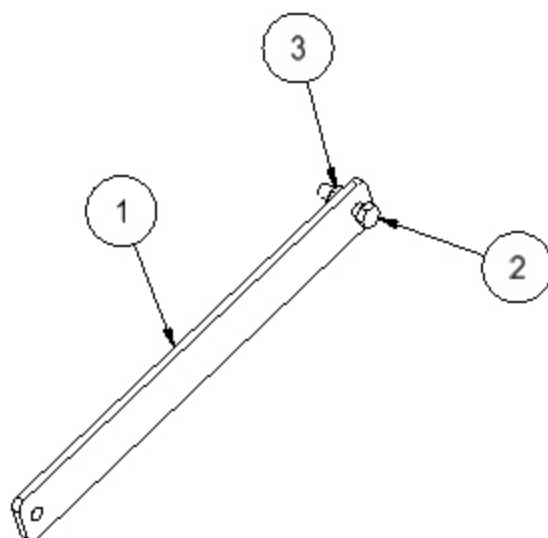
# A-M-E.co

American-Made-Equipment.com

1702 21st Street  
Eldora, IA 50627

Phone: 515-650-3911  
Email: ame@a-m-e.co

Item #	PART #	DESCRIPTION	QTY	LBS/ EA
1	P9-0031	Turn Buckle	2	1.08
2	P9-0082	3/8" PLASTIC COATED CABLE X 4'-8 3/4"	1	1.78
3	990945	3/4" X 3" HEX BOLT - GRADE 8	2	.90
4	990950	3/4" HEX NYLON INSERT LOCK NUT - GRADE A	2	.10



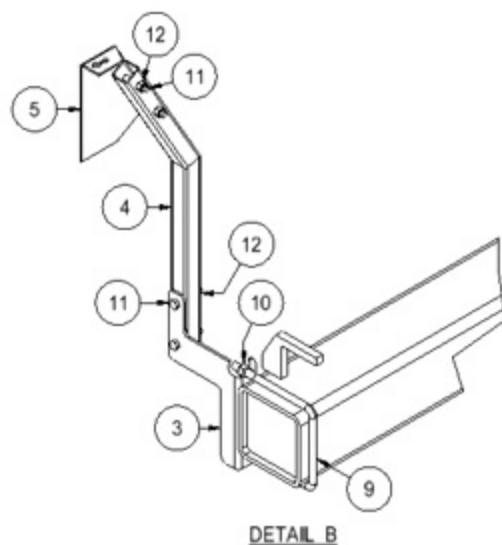
# A-M-E.co

American-Made-Equipment.com

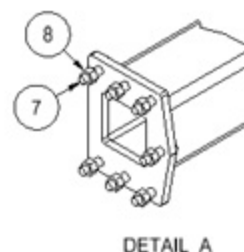
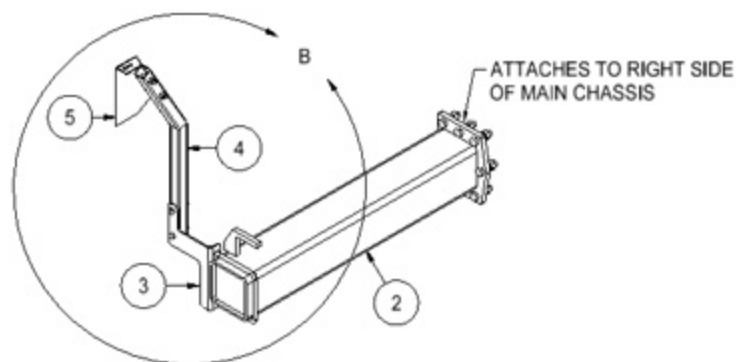
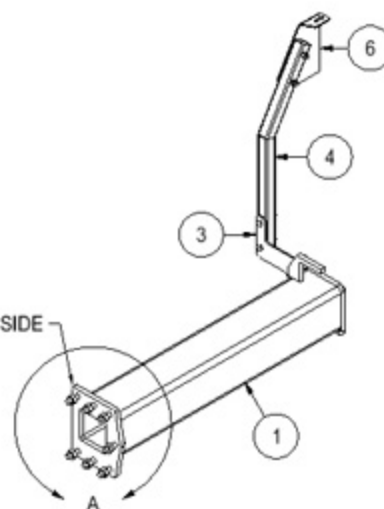
1702 21st Street  
Eldora, IA 50627

Phone: 515-650-3911  
Email: ame@a-m-e.co

Item #	PART #	DESCRIPTION	QTY	LBS/ EA
1	P1-0195	1/2" X 3" X 2'-2 1/4" PLATE - 13/16H	1	11.00
2	990945	3/4" X 3" HEX BOLT - GRADE 8	1	.90
3	990950	3/4" HEX NYLON INSERT LOCK NUT - GRADE A	1	.10



ATTACHES TO LEFT SIDE  
OF MAIN CHASSIS



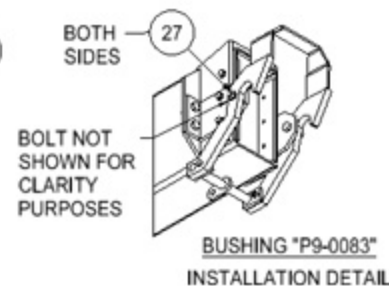
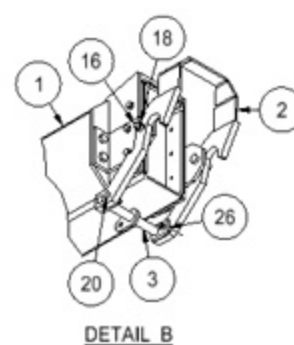
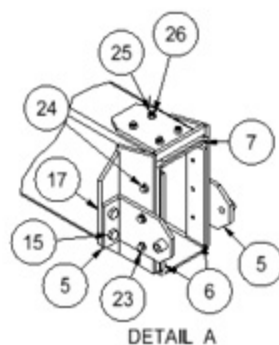
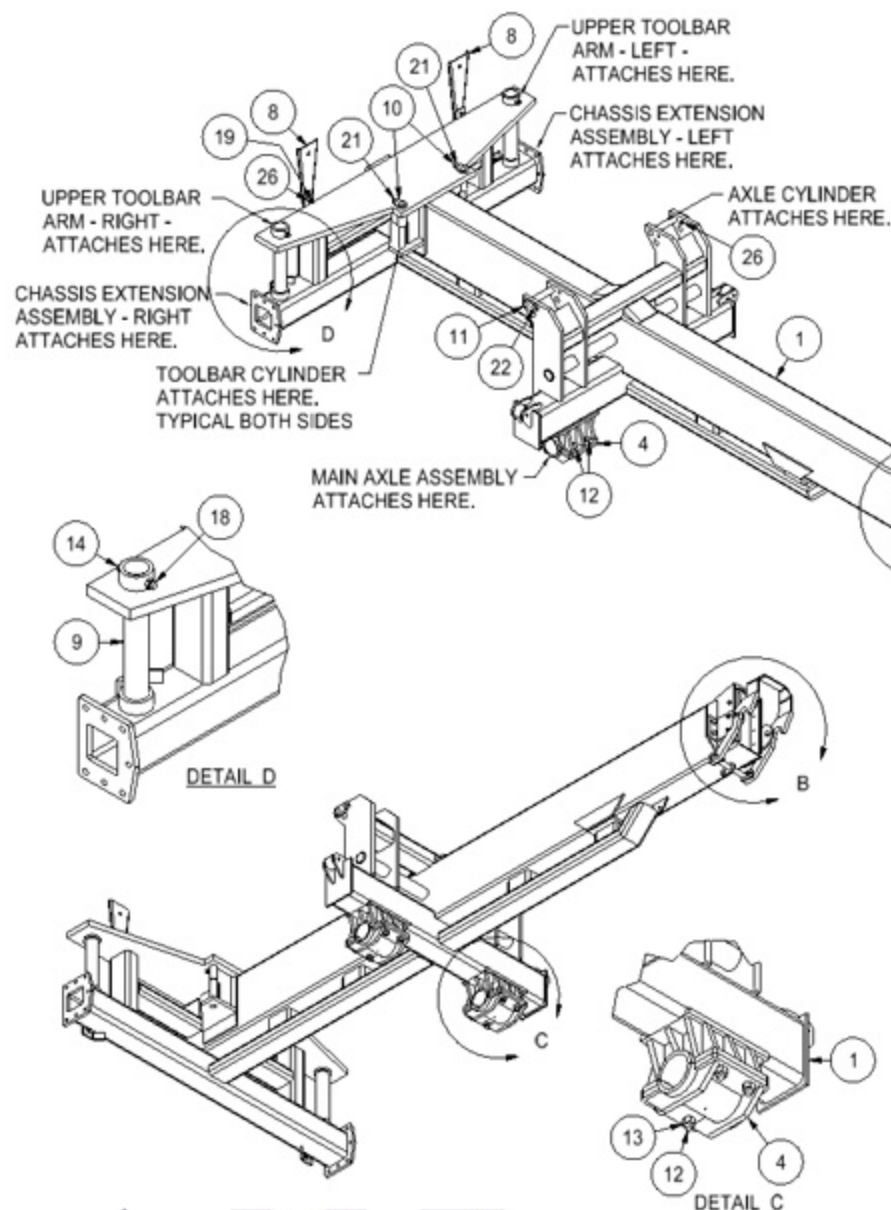
# A-M-E.co

American-Made-Equipment.com

1702 21st Street  
Eldora, IA 50627

Phone: 515-650-3911  
Email: ame@a-m-e.co

Item #	PART #	DESCRIPTION	QTY	LBS/ EA
1	PM-0005-L	LEFT TOOL BAR EXTENSION	1	137.63
2	PM-0005-R	RIGHT TOOL BAR EXTENSION	1	137.63
3	P1-0207	1/4" X 9 1/2" X 1'-2" REFLECTOR BRACKET	2	4.17
4	PM-0022	REFLECTOR POLE	2	7.18
5	P1-0139	3/16" X 8" X 11 1/2" PLATE	1	3.29
6	P1-0139-L	3/16" X 8" X 11 1/2" PLATE	1	3.29
7	990944	3/4" X 2 3/4" HEX BOLT - GRADE 8	14	.90
8	990938	3/4" HEX NUT - GRADE 8	14	.12
9	990179	5/8" X 7 1/8" X 8 11/16" U-BOLT (PLATED)	2	2.20
10	990956	5/8" HEX NYLON INSERT LOCK NUT - GRADE A	4	.08
11	990927	1/2" X 2 3/4" HEX BOLT - GRADE 8	8	.00
12	990916	1/2" HEX NYLON INSERT LOCK NUT - GRADE A	8	.04



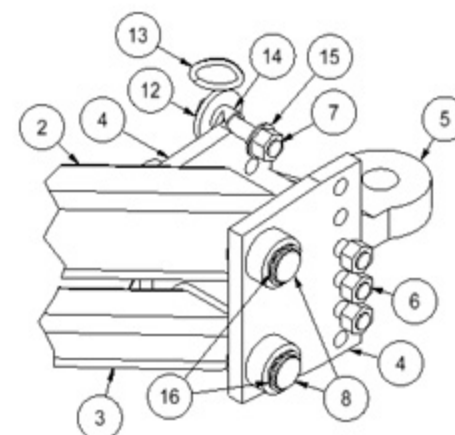
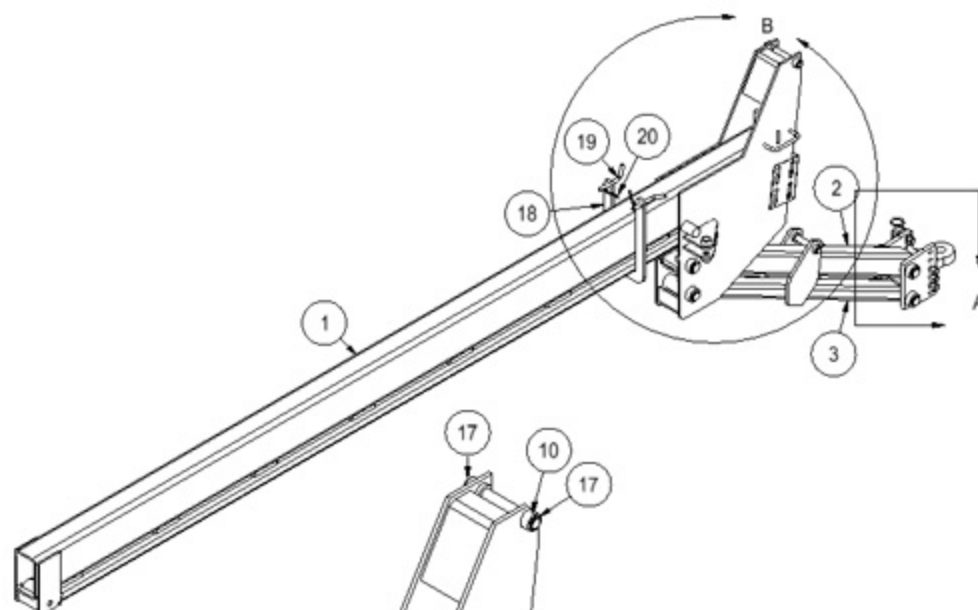
Item #	PART #	DESCRIPTION	QTY	LBS/ EA
1	AM-0028	16 ROW - MAIN REAR ASSY	1	2884.81
2	PM-0007	HOOK WELDMENT	1	31.77
3	PM-0011	TELESCOPING HYDRAULIC MOUNT	1	5.49
4	PM-0010	BOTTOM AXLE SUPPORT	2	30.17
5	PM-0008	3" x 8 7/8" x 6" CLIP	2	8.90
6	P1-0035	1/2" X 2 3/4" X 13 1/2" PLATE - TAPPED HOLES	2	5.18
7	P1-0127	1/2" X 6 3/4" X 9 1/8" UMW	1	1.15
8	P1-0142	3/16" X 7" X 20" PLATE	2	5.03
9	P6-0013	3" X 1'-8" PIN	2	39.71
10	PM-0017	1 1/2" DIA. X 1'-1" PIN W/TAB	2	7.28
11	PM-0013	1 1/2" DIA. X 0'-9 3/8" PIN W/TAB	2	5.77
12	990958	7/8" X 2 3/4" HEX BOLT - GRADE 8	8	.90
13	990915	7/8" HEX NUT - GRADE 8	8	.19
14	990957	3/4" X 5" HEX BOLT - GRADE 8	2	.90
15	990941	3/4" X 2" HEX BOLT - GRADE 8	4	.90
16	990943	3/4" X 2 1/2" HEX BOLT - GRADE 8	2	.90
17	990938	3/4" HEX NUT - GRADE 8	4	.12
18	990950	3/4" HEX NYLON INSERT LOCK NUT - GRADE A	4	.10
19	990922	1/2" X 1 1/2" HEX BOLT - GRADE 8	4	.00
20	990925	1/2" X 2 1/4" HEX BOLT - GRADE 8	2	.00
21	990920	1/2" X 2 3/4" CARRIAGE BOLT - GRADE 5	2	.90
22	990918	1/2" X 2 1/4" CARRIAGE BOLT - GRADE 5	2	.90
23	990966	1/2" X 1 3/4" HEX FLANGE SCREW - GRADE 8	4	.00
24	990970	1/2" X 1 1/4" HEX FLANGE SCREW - GRADE 8	2	.00
25	990962	1/2-13 X 2" PLOW BOLT, #3 FLAT HEAD, GRADE 8	4	.14
26	990916	1/2" HEX NYLON INSERT LOCK NUT - GRADE A	14	.04
27	P9-0083	1 1/4" OD X .25" WT X 0'-1 1/16" BUSHING	2	.24

# A-M-E.co

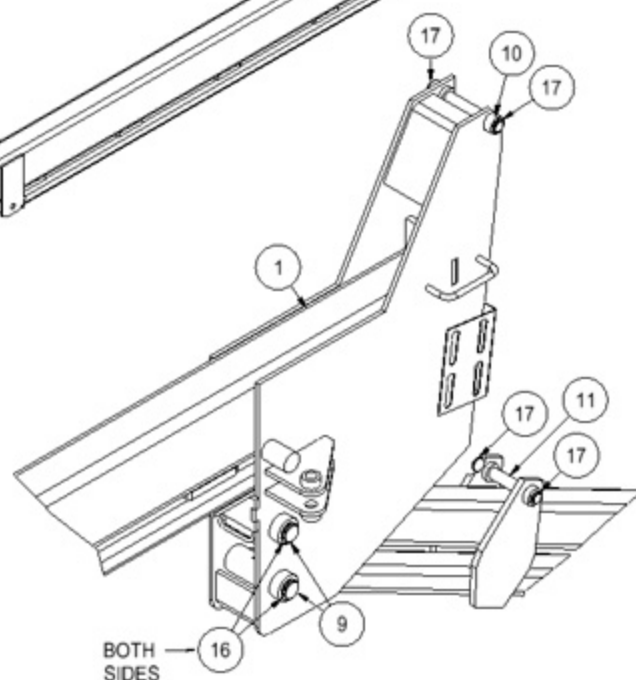
American-Made-Equipment.com

1702 21st Street  
Eldora, IA 50627

Phone: 515-650-3911  
Email: ame@a-m-e.co



DETAIL A



DETAIL B

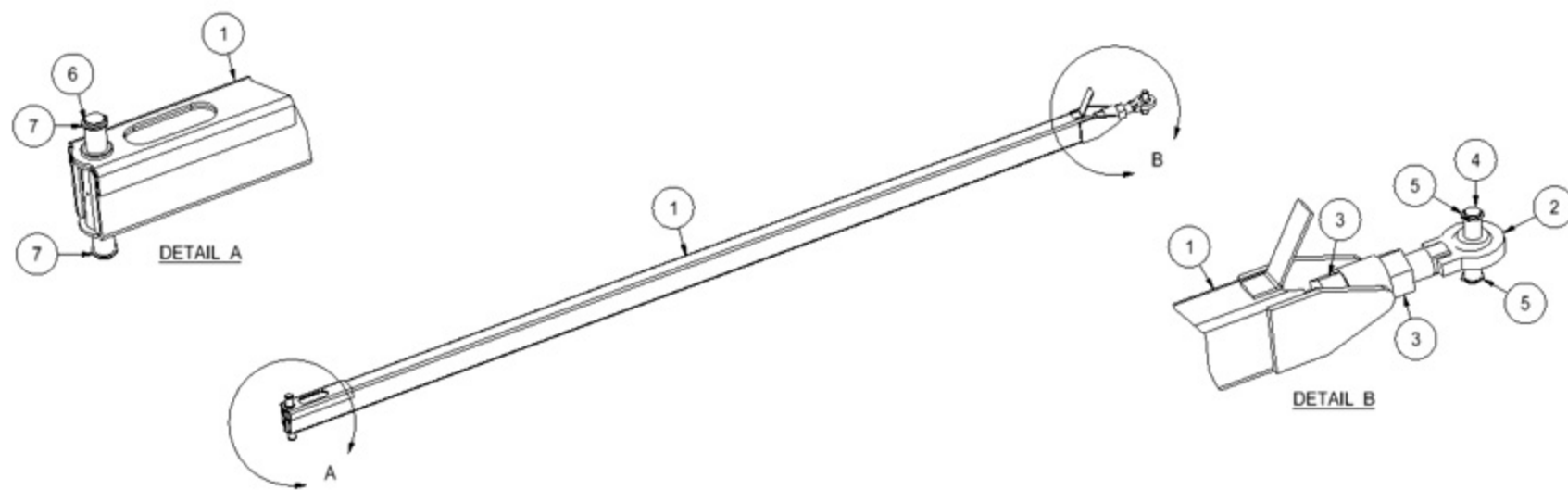
# A-M-E.co

American-Made-Equipment.com

1702 21st Street  
Eldora, IA 50627

Phone: 515-650-3911  
Email: ame@a-m-e.co

Item #	PART #	DESCRIPTION	QTY	LBS/ EA
1	PM-0019	16 ROW - NECK WELDMENT	1	1702.13
2	PA-0002	TOP DRAW BAR ARM	1	186.85
3	PA-0003	BOTTOM DRAW BAR ARM	1	109.92
4	PA-0029	BOTTOM DRAW BAR ARM PLATE	2	29.43
5		HITCH	1	49.05
6	990177	1" X 9 1/2" GRADE 8 BOLT W-LOCKNUT (PLATED)	3	2.63
7	990178	1" X 4 1/2" GRADE 8 BOLT W-LOCKNUT (PLATED)	1	1.42
8	P9-0036	2" +0.0 -0.03 OD X 11 1/4" PIN	2	9.99
9	P9-0004	2" +0.0 -0.03 OD X 10 1/2" PIN	2	9.32
10	P9-0038	1 1/4" +0.0 -0.03 OD X 9 3/4" PIN	1	3.38
11	P9-0039	1 1/4" +0.0 -0.03 OD X 8 3/4" PIN	1	3.03
12	P1-0045	3/8" X 3 1/4" X 1 1/16" ID WASHER	2	.79
13		1/2" TOW CHAIN LINK	1	.22
14	P5-0039	1 1/2" OD X .140 WT X 1" BUSHING	1	.18
15	990005	1" GALV HEAVY WASHER	1	.09
16	P9-0005	1/8" X 2" DIA SNAP RING	8	.06
17	P9-0037	1/16" X 1 1/4" DIA SNAP RING	4	.02
18	P1-0135	3/4" X 11 1/4" X 20 5/8" CONNECTION PLATE	1	21.63
19	P9-0063	3/4" X 6" PIN	2	1.07
20	P9-0064	.177 X 3 1/2" HAIRPIN COTTER PIN	2	.07



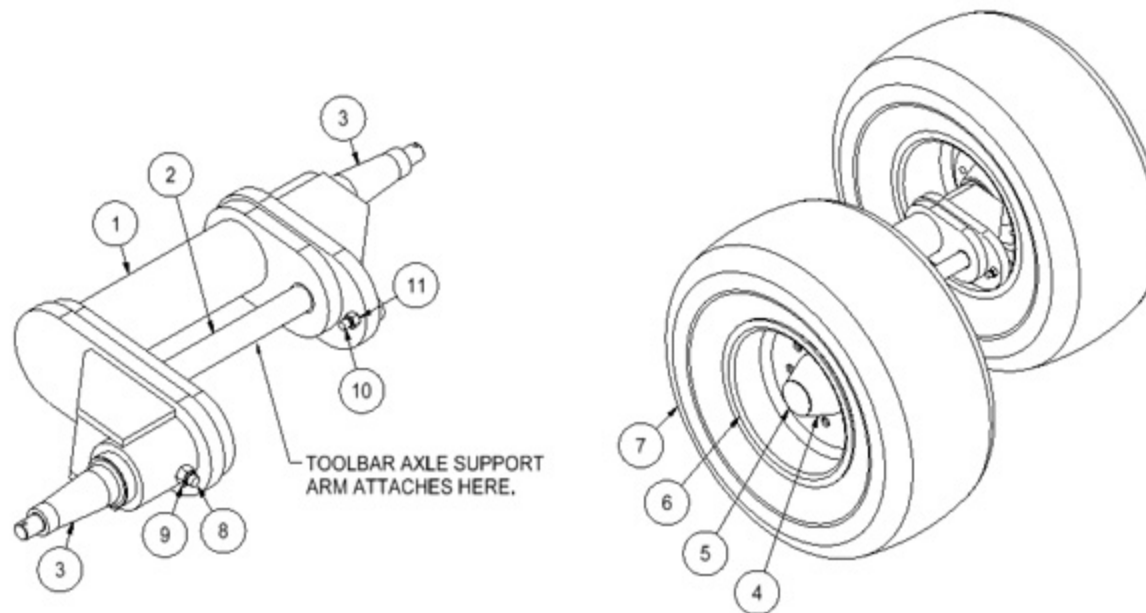
# A-M-E.co

American-Made-Equipment.com

1702 21st Street  
Eldora, IA 50627

Phone: 515-650-3911  
Email: ame@a-m-e.co

Item #	PART #	DESCRIPTION	QTY	LBS/ EA
1	PA-0040	16 ROW - CONTROL ARM	1	283.14
2	P9-0041	BALL JOINT ROD END (MALE)	1	8.53
3	990175	2" GRADE 5 HEX NUT (PLATED)	2	2.39
4	P9-0040	1 1/4" +0.0 -0.03 OD X 5 3/4" PIN	1	1.99
5	P9-0037	1/16" X 1 1/4" DIA SNAP RING	2	.02
6	P9-0043	1 1/2" +0.0 -0.03 OD X 11 1/2" PIN	1	5.74
7	P9-0044	1/8" X 1 1/2" DIA SNAP RING	2	.04



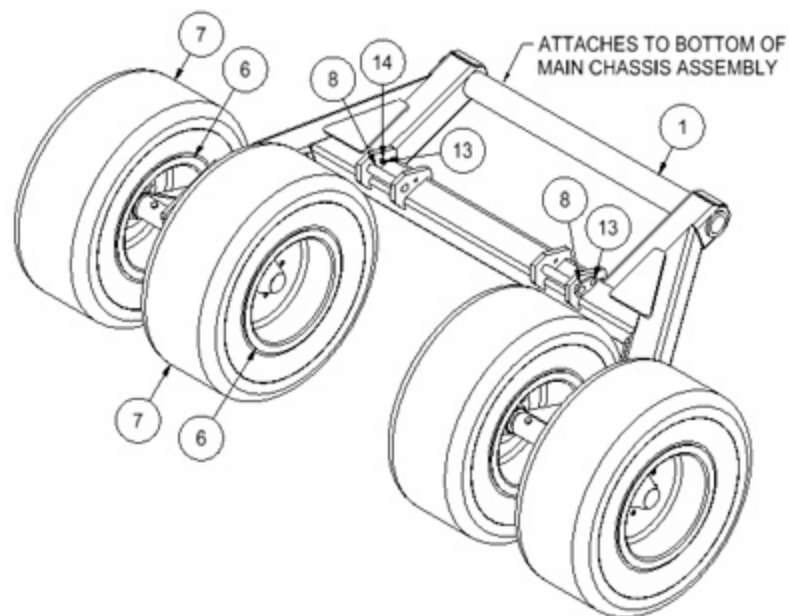
# A-M-E.co

American-Made-Equipment.com

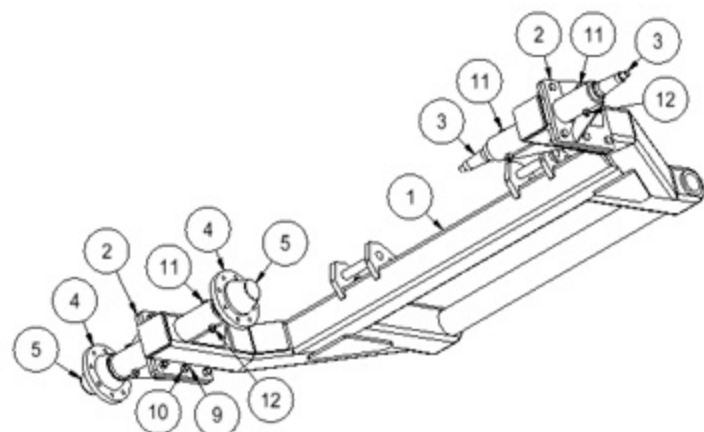
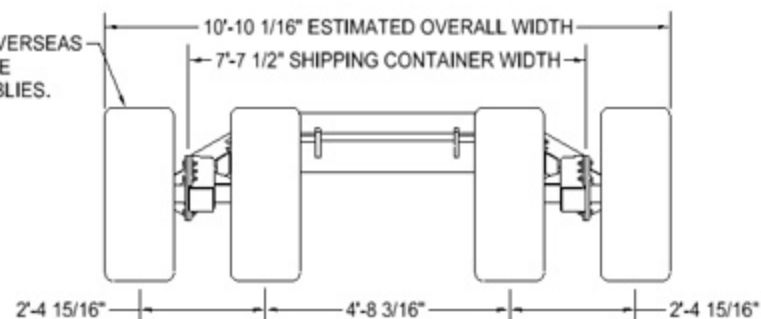
1702 21st Street  
Eldora, IA 50627

Phone: 515-650-3911  
Email: ame@a-m-e.co

Item #	PART #	DESCRIPTION	QTY	LBS/ EA
1	PX-0006	WALKING AXLE ASSEMBLY	1	105.95
2	PA-0024	1 1/2" DIA. X 1'-4 5/8" PIN W/TAB	1	9.37
3	P9-0069	3" OD X 1'-2 1/8" SPINDLE	2	19.59
4	P9-0070	8-BOLT, 8.00" CIRCLE, 6.00" PILOT HUB WITH BEARINGS, SEALS, & STUDS	2	43.39
5	P9-0075	CAP FOR WHEEL HUB	2	.30
6	P9-0073	15 1/2" X 10" RIM, 5 1/2" OFFSET, 8 BOLT, 8" CIRCLE	2	73.19
7	P9-0074	31X13.5-15 TITAN TIRE	2	64.77
8	990955	5/8" X 5" HEX BOLT - GRADE 8	2	.90
9	990956	5/8" HEX NYLON INSERT LOCK NUT - GRADE A	2	.08
10	990919	1/2" X 2 1/2" CARRIAGE BOLT - GRADE 5	1	.90
11	990916	1/2" HEX NYLON INSERT LOCK NUT - GRADE A	1	.04



WHEN SHIPPING IN AN OVERSEAS CONTAINER, REMOVE THE OUTSIDE WHEEL ASSEMBLIES.



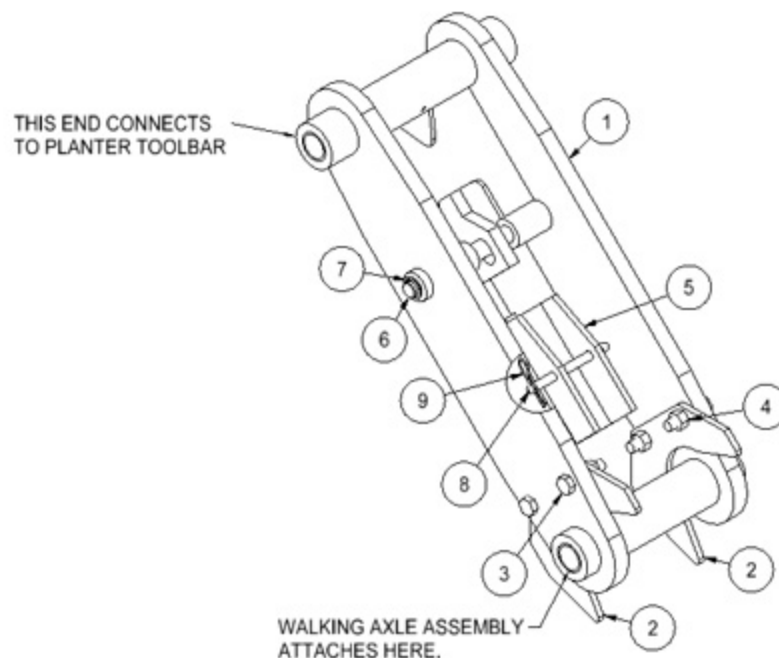
# A-M-E.co

American-Made-Equipment.com

1702 21st Street  
Eldora, IA 50627

Phone: 515-650-3911  
Email: ame@a-m-e.co

Assembly Drawing		Galvanized add 6% to weight		
Item #	Part #	Description	Qty	Lbs/Unit
1	PX-0002	REAR AXLE WELDMENT	1	762.0
2	PX-0004	REAR AXLE EXTENSION	2	51.7
3	P9-0069	3" OD X 1'-2 1/8" SPINDLE	4	19.6
4	P9-0070	8-BOLT, 8.00" CIRCLE, 6.00" PILOT HUB WITH BEARINGS, SEALS, & STUDS	4	43.4
5	P9-0075	CAP FOR WHEEL HUB	4	.3
6	P9-0077	22 1/2" X 14" RIM, 8 1/4" OFFSET, 8 BOLT, 8" CIRCLE	4	115.0
7	P9-0016	445/50 R22.5 MICHILEN TIRE	4	31.7
8	PM-0013	1 1/2" DIA. X 0'-9 3/8" PIN W/TAB	2	5.8
9	990944	3/4" X 2 3/4" HEX BOLT - GRADE 8	12	.9
10	990938	3/4" HEX NUT - GRADE 8	12	.1
11	990955	5/8" X 5" HEX BOLT - GRADE 8	4	.9
12	990956	5/8" HEX NYLON INSERT LOCK NUT - GRADE A	4	.1
13	990918	1/2" X 2 1/4" CARRIAGE BOLT - GRADE 5	2	.9
14	990916	1/2" HEX NYLON INSERT LOCK NUT - GRADE A	2	.0



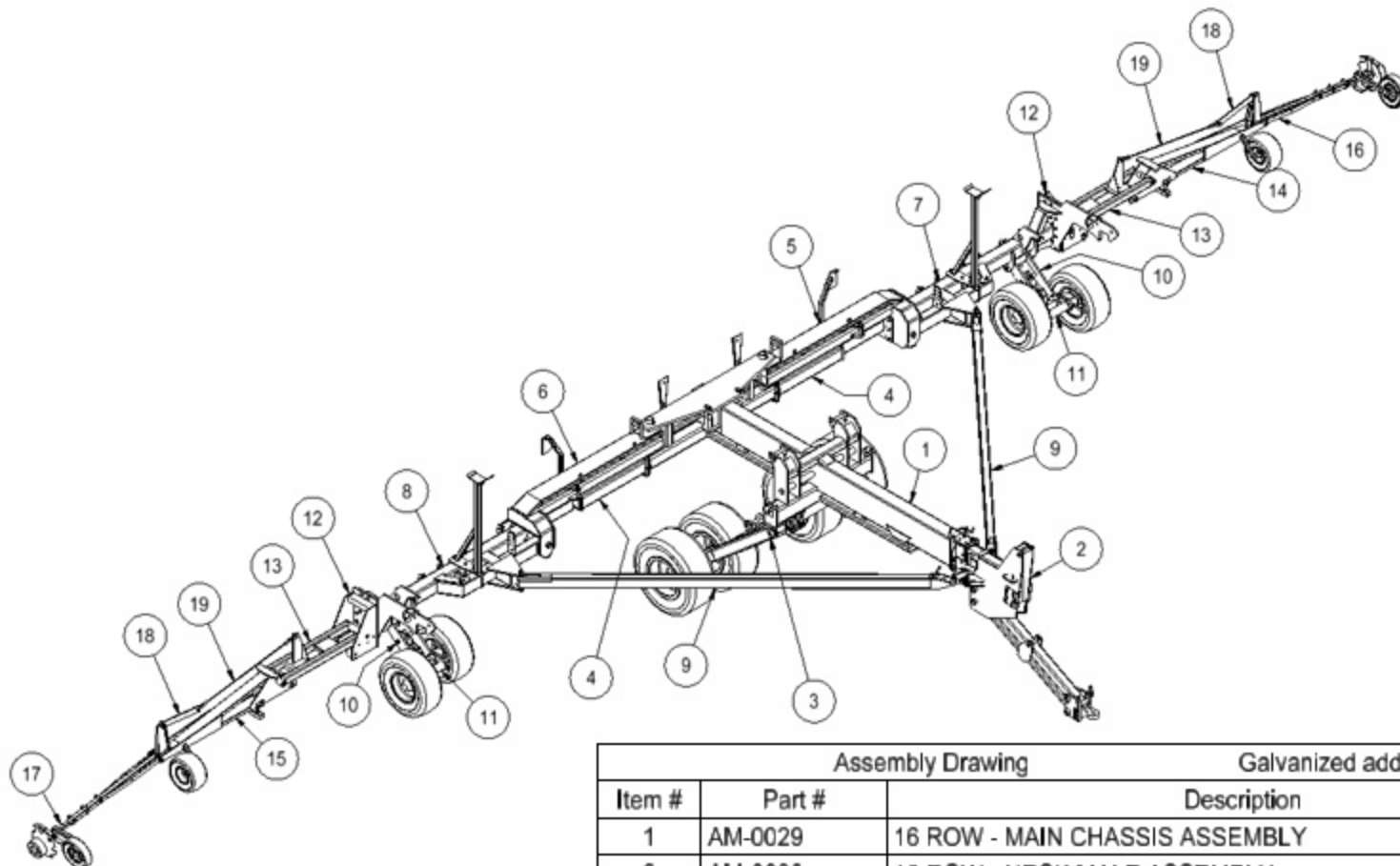
# A-M-E.co

American-Made-Equipment.com

1702 21st Street  
Eldora, IA 50627

Phone: 515-650-3911  
Email: ame@a-m-e.co

Item #	PART #	DESCRIPTION	QTY	LBS/ EA
1	PX-0003	TOOLBAR WHEEL SUPPORT	1	123.55
2	P1-0131	1/2" X 8" X 10" PLATE	2	3.42
3	990953	5/8" X 2 1/2" HEX BOLT - GRADE 8	4	.90
4	990951	5/8" HEX NUT - GRADE 8	4	.08
5	PA-0016	CYLINDER STOP - TOOLBAR WHEELS	1	11.28
6	P9-0049	1" OD (+0.0 -0.03) X 12" PIN	1	2.66
7	P9-0062	1/16" X 1" DIA SNAP RING	2	.01
8	P9-0078	1/2" X 6" PIN	1	.47
9	P9-0079	.093 X 2 1/2" HAIRPIN COTTER PIN	1	.01



# A-M-E.co

American-Made-Equipment.com

1702 21st Street  
Eldora, IA 50627

Phone: 515-650-3911  
Email: ame@a-m-e.co

Assembly Drawing			Galvanized add 6% to weight	
Item #	Part #	Description	Qty	Lbs/Unit
1	AM-0029	16 ROW - MAIN CHASSIS ASSEMBLY	1	3148.9
2	AM-0030	16 ROW - NECK MALE ASSEMBLY	1	2187.6
3	AX-0007	MAIN AXLE ASSEMBLY	1	1735.0
4	AM-0021	CHASSIS TOOLBAR EXTENSIONS - LEFT & RIGHT	1	323.9
5	AA-0008-L	UPPER TOOLBAR ASSEMBLY - LEFT	1	918.8
6	AA-0008-R	UPPER TOOLBAR ASSEMBLY - RIGHT	1	918.1
7	AA-0020-L-16	16 ROW (70cm) - PLANTER TOOLBAR - LEFT	1	965.9
8	AA-0020-R-16	16 ROW (70cm) - PLANTER TOOLBAR - RIGHT	1	956.8
9	AM-0031	16 ROW - TOOLBAR CONTROL ARM	2	304.3
10	AX-0010	TOOLBAR AXLE SUPPORT ARM	2	148.8
11	AX-0006	WALKING AXLE ASSEMBLY	2	520.7
12	AA-0010	MARKER CONTROL ARM SUPPORT BRACKET ASSEMBLY	2	228.4
13	AA-0011	MARKER CONTROL ARM	2	177.5
14	AA-0021-L-16	16 ROW - MAIN MARKER ARM ASSEMBLY - LEFT	1	287.4
15	AA-0021-R-16	16 ROW - MAIN MARKER ARM ASSEMBLY - RIGHT	1	287.4
16	AA-0022-L-16	16 ROW - ADJUSTABLE MARKER ARM ASSEMBLY - LEFT	1	208.2
17	AA-0022-R-16	16 ROW - ADJUSTABLE MARKER ARM ASSEMBLY - RIGHT	1	208.2
18	AA-0024	MARKER ARM CONTROL PLATE	2	12.0
19	AA-0023	16 ROW - MARKER ARM CONTROL CABLE	2	5.9